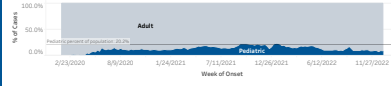


Related monthly data summaries of 2021 and 1/15/2022, includes cases with onset dates through 1/15/2022

Pediatric COVID-19 Cases: Demographics
For this report, pediatric refers to people under age 18, and adult refers to people age 18 and older or where age is unknown. Case data include both confirmed and presumptive cases.

Table with 2 columns: Category, Value. Total Pediatric Cases: 154,670 (16.4%), Confirmed: 139,665 (90.3%), Presumptive: 15,015 (9.7%)

The proportion of COVID-19 cases among people under age 18 has decreased since January 2022. The chart below shows the proportion of cases that are pediatric or adult by week of onset.



After a dramatic peak in January 2022, pediatric COVID-19 case counts increased from March through May. The chart below shows the number of pediatric cases by week of onset.



Peak pediatric COVID-19 case rates in January 2022 were highest among people age 12 to 17. The chart below shows the rate of pediatric cases per 100,000 by week of onset and age group, in years.

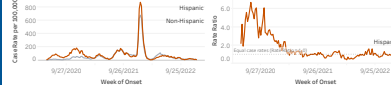


The proportion of pediatric COVID-19 cases is split between females and males. The chart below shows the percent of pediatric cases by sex.

Female (47.2%), Male (48.6%)

Health inequities are unfair and avoidable differences in health status due to race or ethnicity. For weeks with case counts of 10 or greater, we can compare the case rate by ethnicity to measure the health inequity experienced by youth who identify as Hispanic.

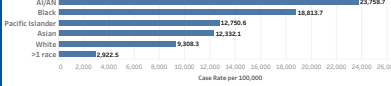
The pediatric case rate is higher among people who identify as Hispanic. The chart below shows the pediatric case rate per 100,000 by ethnicity.



Health inequities are unfair and avoidable differences in health status due to race or ethnicity. For weeks with case counts of 10 or greater, we can compare the case rate by race to the case rate among people who identify as White, to measure the health inequity experienced by youth in communities of color and Tribal communities.

Dividing the weekly case rate for communities of color and Tribal communities by the case rate among people who identify as White gives us the rate ratio. A rate ratio of 1.0 means the case rate is equal between the community of color or Tribal community and among people who identify as White.

Pediatric case rates are higher among people who identify as American Indian or Alaska Native, Black, Pacific Islander and Asian. The chart below shows the pediatric case rate per 100,000 by race.



Weekly pediatric case rates remain higher among people who identify as American Indian or Alaska Native (A/AN). Weekly pediatric case rates among people who identify as A/AN have been 0.8 to 2.3 times higher than for people who identify as White.



Weekly pediatric case rates remain higher among people who identify as Black. Weekly pediatric case rates among people who identify as Black have been 1.0 to 2.3 times higher than for people who identify as White.



Weekly pediatric case rates remain higher among people who identify as Pacific Islander. Weekly pediatric case rates among people who identify as Pacific Islander have been 0.4 to 0.2 times higher than for people who identify as White.



Weekly pediatric case rates have been higher in 2022 among people who identify as Asian. Weekly pediatric case rates among people who identify as Asian have been 0.3 to 6.0 times higher than for people who identify as White.



Weekly pediatric case rates are similar among people who identify as more than 1 race and people who identify as White. Weekly pediatric case rates among people who identify as more than 1 race have been 0.2 to 0.5 times higher than for people who identify as White.



COVID-19 data are provisional and subject to change. Cases are classified by onset date (the date the person started feeling symptoms). When a person with symptoms did not report their onset date or when a person without symptoms is tested, their onset date is considered to be the date their first symptoms were collected for testing. Rates shown in this dashboard are calculated using population estimates from the 2021 Annual Population Report from Portland State University's College of Urban & Public Health's Population Research Center. Data are available for the following populations: pediatric age group, all ages, and all ages by sex. The data are not available for the following populations: data is a combination of the 2020 Public Use Microdata Sample (PUMS) from the American Community Survey and the 2021 PHSU Population Research Center's population estimates. Data and ethnicity percentages estimates were developed with the PUMS. The ethnicity percentages were reported in the 2021 PHSU population estimates.

Updated monthly. Data current as of 12:01am 1/11/2023. Include cases with onset dates through 1/7/2023

Demographics

Disease Severity

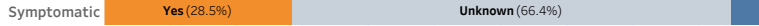
County-level

## Pediatric COVID-19 Cases: Disease Severity

Disease severity for this report is assessed by **symptom** status, **hospitalization** rates, reported **deaths**, and the COVID-19 associated Multisystem Inflammatory Syndrome in Children (**MIS-C**).

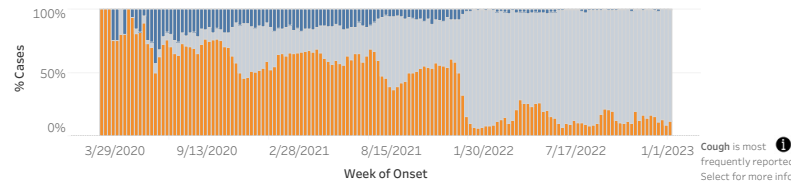
### Symptom status is not known for most pediatric cases of COVID-19

The chart below shows the percent of pediatric cases by symptom status. Because people without symptoms are less likely to be tested, there are likely more asymptomatic people than shown below.



### Less is known about the symptom status of recent pediatric cases

The chart below shows the percent of pediatric cases each week by symptom status. The "unknown" portions in the most recent weeks may decrease as additional interviews are conducted and data are recorded. Public health resources are limited in times of surge.



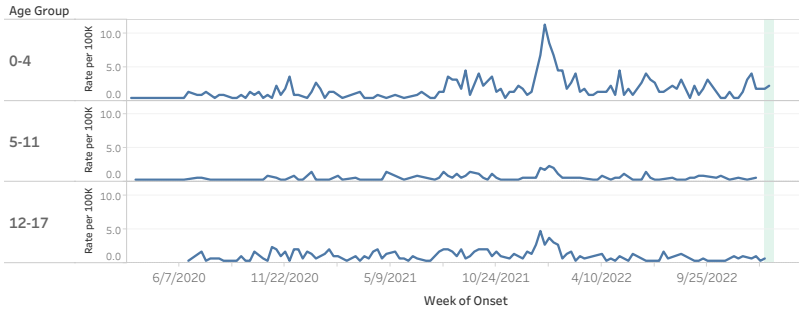
### Hospitalizations of pediatric COVID-19 cases during their illness remain rare

The chart below shows the percent of pediatric cases ever admitted to the hospital. [More on OHA's hospitalization data source, Opera](#)



### Hospitalized pediatric case rates peaked in January 2022 for people ages 0 to 4 years

The chart below shows the rate of pediatric cases per 100,000 ever admitted to the hospital by week of onset and age group. Illnesses that began in the last two weeks may not yet be reported.



There have been **14** pediatric deaths reported with COVID-19

### Multisystem Inflammatory Syndrome in Children (MIS-C)

Cases of a COVID-19-associated "multisystem inflammatory syndrome in children" (MIS-C), which may resemble Kawasaki Disease, have been reported in people under the age of 21. In addition to a positive COVID-19 test, the syndrome includes fever, multisystem involvement (cardiac, renal, respiratory, hematologic, gastrointestinal, dermatologic or neurologic), and laboratory evidence of inflammation.

**71 cases of MIS-C**

COVID-19 data are provisional and subject to change.

Cases are displayed by onset date (the date the person started having symptoms). When a person with symptoms did not report their onset date or when a person without symptoms is tested, their onset date is calculated as 2 days before the specimen was collected for testing.

Rates shown on this dashboard are calculated using population estimates from the 2021 Annual Population Report from Portland State University's College of Urban & Public Affairs: Population Research Center. For analysis purposes, pediatric age groups were adjusted assuming an even distribution

Updated monthly. Data current as of 12:01am 1/11/2023, include cases with onset dates through 1/7/2023

Demographics

Disease Severity

County-level

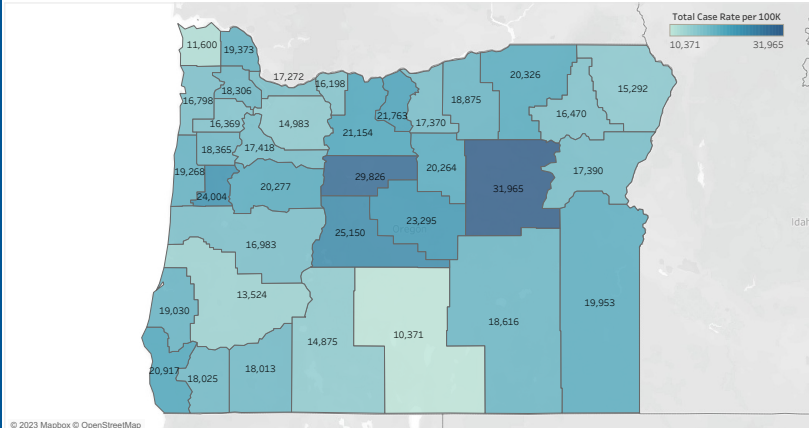
## Pediatric COVID-19 Case Rates: County-level

The number of cases in a community depends, in part, on the number of people who live there. Looking at the rate of COVID-19 cases per 100,000 people allows for comparison of counties of different sizes more evenly than total case counts alone.

The **total** rate of cases per 100,000 people under 18 is shown using color; the darker the color, the higher the total rate of pediatric cases in that county. The **weekly** rate of cases per 100,000 people under 18 by county is shown using size; the taller the bar, the higher the weekly pediatric case rate.

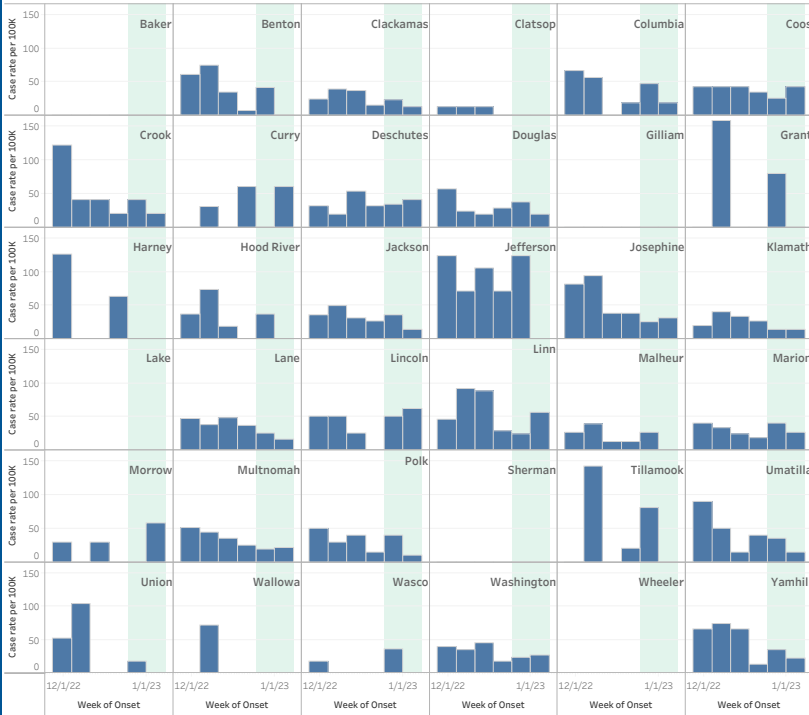
### Total pediatric COVID-19 case rates are highest in Grant and Jefferson counties

The chart below shows the total rate of pediatric cases per 100,000 by county.



### Weekly pediatric COVID-19 case rates were highest in Grant and Tillamook counties in the past 6 weeks

The chart below shows the rate of pediatric cases per 100,000 by county in the previous six full weeks by date of onset. Illnesses that began in the last two weeks may not yet be reported.



COVID-19 data are provisional and subject to change.

Cases are displayed by onset date (the date the person started having symptoms). When a person with symptoms did not report their onset date or when a person without symptoms is tested, their onset date is calculated as 2 days before the specimen was collected for testing.

Rates shown on this dashboard are calculated using population estimates from the 2021 Annual Population Report from Portland State University's College of Urban & Public Affairs: Population Research Center.

Week of Onset	Age Group			
	Adult		Pediatric	
	Cases	(%)	Cases	(%)
<b>Grand Total</b>	<b>789,844</b>	<b>83.6%</b>		<b>16.4%</b>
1/1/2023	1,915	91.1%		8.9%
12/25/2022	2,312	90.5%		9.5%
12/18/2022	2,487	92.8%		7.2%
12/11/2022	3,030	90.4%		9.6%
12/4/2022	3,474	90.4%		9.6%
11/27/2022	4,026	91.4%		8.6%
11/20/2022	4,013	91.7%		8.3%
11/13/2022	3,017	89.3%		10.7%
11/6/2022	2,957	89.1%		10.9%
10/30/2022	2,615	90.1%		9.9%
10/23/2022	2,372	89.4%		10.6%
10/16/2022	2,309	90.7%		9.3%
10/9/2022	2,726	90.5%		9.5%
10/2/2022	3,176	90.7%		9.3%
9/25/2022	3,513	90.3%		9.7%
9/18/2022	3,900	86.0%		14.0%
9/11/2022	3,635	82.7%		17.3%
9/4/2022	3,507	86.3%		13.7%
8/28/2022	3,187	87.8%		12.2%
8/21/2022	3,843	90.3%		9.7%
8/14/2022	4,412	90.1%		9.9%
8/7/2022	5,204	90.4%		9.6%
7/31/2022	5,702	88.9%		11.1%
7/24/2022	6,931	89.1%		10.9%
7/17/2022	7,937	89.6%		10.4%
7/10/2022	8,192	90.1%		9.9%
7/3/2022	9,524	90.0%		10.0%
6/26/2022	8,908	90.1%		9.9%
6/19/2022	9,885	89.7%		10.3%
6/12/2022	9,239	87.7%		12.3%
6/5/2022	8,477	86.5%		13.5%
5/29/2022	9,034	84.8%		15.2%
5/22/2022	8,478	84.3%		15.7%
5/15/2022	9,594	81.6%		18.4%
5/8/2022	8,628	81.5%		18.5%
5/1/2022	7,497	82.2%		17.8%
4/24/2022	6,603	82.3%		17.7%
4/17/2022	5,155	82.0%		18.0%

# 1. Proportion of cases that are pediatric or adult, by week of onset

Week of Onset	Age Group			
	Adult		Pediatric	
	Cases	(%)	Cases	(%)
4/10/2022	3,657	82.6%	769	17.4%
4/3/2022	2,274	81.8%	507	18.2%
3/27/2022	1,632	83.0%	334	17.0%
3/20/2022	1,348	85.6%	226	14.4%
3/13/2022	1,259	85.1%	220	14.9%
3/6/2022	1,692	85.6%	284	14.4%
2/27/2022	2,307	84.0%	440	16.0%
2/20/2022	3,695	82.6%	780	17.4%
2/13/2022	5,947	83.6%	1,169	16.4%
2/6/2022	10,618	80.3%	2,606	19.7%
1/30/2022	18,129	80.8%	4,303	19.2%
1/23/2022	28,464	78.5%	7,782	21.5%
1/16/2022	40,753	76.8%	12,285	23.2%
1/9/2022	43,037	76.7%	13,061	23.3%
1/2/2022	42,815	78.6%	11,634	21.4%
12/26/2021	24,348	83.5%	4,802	16.5%
12/19/2021	9,578	87.2%	1,401	12.8%
12/12/2021	4,636	82.6%	977	17.4%
12/5/2021	3,848	79.2%	1,011	20.8%
11/28/2021	4,587	79.9%	1,155	20.1%
11/21/2021	4,123	80.8%	981	19.2%
11/14/2021	4,043	78.9%	1,078	21.1%
11/7/2021	4,583	78.5%	1,254	21.5%
10/31/2021	5,065	80.5%	1,230	19.5%
10/24/2021	5,607	78.7%	1,514	21.3%
10/17/2021	6,319	79.2%	1,663	20.8%
10/10/2021	6,390	78.5%	1,746	21.5%
10/3/2021	6,535	77.7%	1,873	22.3%
9/26/2021	7,551	77.2%	2,227	22.8%
9/19/2021	8,588	77.7%	2,466	22.3%
9/12/2021	8,858	77.8%	2,524	22.2%
9/5/2021	10,987	80.9%	2,589	19.1%
8/29/2021	10,637	82.9%	2,192	17.1%
8/22/2021	12,660	84.5%	2,317	15.5%
8/15/2021	13,357	85.0%	2,354	15.0%
8/8/2021	11,706	86.3%	1,857	13.7%
8/1/2021	9,380	86.3%	1,491	13.7%
7/25/2021	6,527	85.4%	1,116	14.6%
7/18/2021	3,616	85.2%	628	14.8%

# 1. Proportion of cases that are pediatric or adult, by week of onset

Week of Onset	Age Group			
	Adult		Pediatric	
	Cases	(%)	Cases	(%)
7/11/2021	2,240	86.4%	353	13.6%
7/4/2021	1,342	84.6%	244	15.4%
6/27/2021	1,046	84.2%	196	15.8%
6/20/2021	1,023	83.4%	204	16.6%
6/13/2021	1,293	82.8%	268	17.2%
6/6/2021	1,360	83.6%	267	16.4%
5/30/2021	1,531	82.8%	318	17.2%
5/23/2021	1,762	81.4%	403	18.6%
5/16/2021	2,288	80.8%	543	19.2%
5/9/2021	3,067	82.0%	674	18.0%
5/2/2021	3,686	82.4%	788	17.6%
4/25/2021	4,351	82.1%	948	17.9%
4/18/2021	4,822	84.1%	912	15.9%
4/11/2021	4,261	84.5%	780	15.5%
4/4/2021	3,559	85.6%	600	14.4%
3/28/2021	2,781	86.2%	445	13.8%
3/21/2021	2,231	88.1%	301	11.9%
3/14/2021	1,839	85.6%	310	14.4%
3/7/2021	1,690	85.1%	296	14.9%
2/28/2021	1,647	87.1%	245	12.9%
2/21/2021	1,920	86.9%	290	13.1%
2/14/2021	2,282	86.2%	364	13.8%
2/7/2021	2,391	87.0%	357	13.0%
1/31/2021	3,024	88.1%	410	11.9%
1/24/2021	3,605	89.3%	431	10.7%
1/17/2021	4,125	88.8%	521	11.2%
1/10/2021	4,861	89.0%	601	11.0%
1/3/2021	7,091	88.2%	948	11.8%
12/27/2020	7,602	89.0%	938	11.0%
12/20/2020	6,138	90.1%	671	9.9%
12/13/2020	7,189	89.6%	838	10.4%
12/6/2020	7,706	88.9%	961	11.1%
11/29/2020	8,575	88.6%	1,098	11.4%
11/22/2020	8,001	89.4%	950	10.6%
11/15/2020	8,724	89.5%	1,023	10.5%
11/8/2020	6,979	88.4%	917	11.6%
11/1/2020	5,865	88.1%	789	11.9%
10/25/2020	3,795	88.1%	511	11.9%
10/18/2020	2,667	86.8%	407	13.2%

# 1. Proportion of cases that are pediatric or adult, by week of onset

Week of Onset	Age Group			
	Adult		Pediatric	
	Cases	(%)	Cases	(%)
10/11/2020	2,098	88.3%	278	11.7%
10/4/2020	2,145	88.1%	291	11.9%
9/27/2020	2,110	88.5%	273	11.5%
9/20/2020	1,756	88.8%	221	11.2%
9/13/2020	1,602	87.6%	227	12.4%
9/6/2020	1,286	89.9%	144	10.1%
8/30/2020	1,244	89.2%	151	10.8%
8/23/2020	1,255	88.6%	161	11.4%
8/16/2020	1,460	88.7%	186	11.3%
8/9/2020	1,520	86.2%	243	13.8%
8/2/2020	1,706	88.3%	226	11.7%
7/26/2020	1,850	87.4%	267	12.6%
7/19/2020	1,824	85.1%	320	14.9%
7/12/2020	1,960	87.5%	281	12.5%
7/5/2020	2,205	88.8%	279	11.2%
6/28/2020	1,787	87.5%	255	12.5%
6/21/2020	1,639	89.1%	200	10.9%
6/14/2020	1,204	87.5%	172	12.5%
6/7/2020	1,074	85.1%	188	14.9%
5/31/2020	731	91.7%	66	8.3%
5/24/2020	363	89.2%	44	10.8%
5/17/2020	281	93.7%	19	6.3%
5/10/2020	327	92.1%	28	7.9%
5/3/2020	395	93.8%	26	6.2%
4/26/2020	397	96.1%	16	3.9%
4/19/2020	360	94.7%	20	5.3%
4/12/2020	351	98.6%	5	1.4%
4/5/2020	336	98.5%	5	1.5%
3/29/2020	429	98.2%	8	1.8%
3/22/2020	452	99.1%	4	0.9%
3/15/2020	432	99.5%	2	0.5%
3/8/2020	217	97.7%	5	2.3%
3/1/2020	81	97.6%	2	2.4%
2/23/2020	26	100.0%		
2/16/2020	7	100.0%		
2/9/2020	3	100.0%		
1/26/2020	2	100.0%		

## 2. Weekly pediatric cases, by age group

Week of Onset	Age Group	Case Count	Case Rate ..
1/1/2023	0-4	97	43.7
	5-11	50	14.6
	12-17	40	13.5
12/25/2022	0-4	155	69.8
	5-11	38	11.1
	12-17	51	17.2
12/18/2022	0-4	120	54.0
	5-11	34	9.9
	12-17	39	13.2
12/11/2022	0-4	140	63.0
	5-11	103	30.0
	12-17	79	26.7
12/4/2022	0-4	168	75.6
	5-11	104	30.3
	12-17	98	33.1
11/27/2022	0-4	173	77.9
	5-11	119	34.7
	12-17	85	28.7
11/20/2022	0-4	168	75.6
	5-11	96	28.0
	12-17	101	34.1
11/13/2022	0-4	137	61.7
	5-11	127	37.0
	12-17	97	32.8
11/6/2022	0-4	121	54.5
	5-11	108	31.5
	12-17	131	44.2
10/30/2022	0-4	114	51.3
	5-11	99	28.9
	12-17	75	25.3
10/23/2022	0-4	96	43.2
	5-11	101	29.5
	12-17	84	28.4
10/16/2022	0-4	79	35.6
	5-11	88	25.7
	12-17	70	23.6
10/9/2022	0-4	111	50.0
	5-11	85	24.8
	12-17	91	30.7
10/2/2022	0-4	121	54.5
	5-11	94	27.4
	12-17	111	37.5
9/25/2022	0-4	126	56.7



## 2. Weekly pediatric cases, by age group

Week of Onset	Age Group	Case Count	Case Rate ..
9/25/2022	5-11	107	31.2
	12-17	145	49.0
9/18/2022	0-4	145	65.3
	5-11	213	62.1
	12-17	279	94.2
9/11/2022	0-4	184	82.8
	5-11	275	80.2
	12-17	302	102.0
9/4/2022	0-4	159	71.6
	5-11	189	55.1
	12-17	210	70.9
8/28/2022	0-4	156	70.2
	5-11	138	40.3
	12-17	149	50.3
8/21/2022	0-4	183	82.4
	5-11	121	35.3
	12-17	110	37.2
8/14/2022	0-4	212	95.4
	5-11	145	42.3
	12-17	130	43.9
8/7/2022	0-4	278	125.1
	5-11	144	42.0
	12-17	132	44.6
7/31/2022	0-4	306	137.7
	5-11	204	59.5
	12-17	205	69.2
7/24/2022	0-4	391	176.0
	5-11	232	67.7
	12-17	223	75.3
7/17/2022	0-4	396	178.2
	5-11	277	80.8
	12-17	248	83.8
7/10/2022	0-4	398	179.1
	5-11	268	78.2
	12-17	234	79.0
7/3/2022	0-4	511	230.0
	5-11	296	86.4
	12-17	257	86.8
6/26/2022	0-4	472	212.5
	5-11	240	70.0
	12-17	262	88.5
6/19/2022	0-4	504	226.9
	5-11	317	92.5

## 2. Weekly pediatric cases, by age group

Week of Onset	Age Group	Case Count	Case Rate ..
6/19/2022	12-17	308	104.0
6/12/2022	0-4	486	218.8
	5-11	418	121.9
	12-17	394	133.1
6/5/2022	0-4	413	185.9
	5-11	511	149.1
	12-17	404	136.4
5/29/2022	0-4	432	194.5
	5-11	711	207.4
	12-17	473	159.8
5/22/2022	0-4	413	185.9
	5-11	691	201.6
	12-17	479	161.8
5/15/2022	0-4	487	219.2
	5-11	991	289.1
	12-17	680	229.7
5/8/2022	0-4	441	198.5
	5-11	913	266.4
	12-17	608	205.3
5/1/2022	0-4	354	159.3
	5-11	713	208.0
	12-17	554	187.1
4/24/2022	0-4	295	132.8
	5-11	675	196.9
	12-17	448	151.3
4/17/2022	0-4	258	116.1
	5-11	532	155.2
	12-17	338	114.2
4/10/2022	0-4	191	86.0
	5-11	354	103.3
	12-17	224	75.7
4/3/2022	0-4	113	50.9
	5-11	247	72.1
	12-17	147	49.6
3/27/2022	0-4	83	37.4
	5-11	136	39.7
	12-17	115	38.8
3/20/2022	0-4	72	32.4
	5-11	73	21.3
	12-17	81	27.4
3/13/2022	0-4	62	27.9
	5-11	99	28.9
	12-17	59	19.9

## 2. Weekly pediatric cases, by age group

Week of Onset	Age Group	Case Count	Case Rate ..
3/6/2022	0-4	74	33.3
	5-11	122	35.6
	12-17	88	29.7
2/27/2022	0-4	143	64.4
	5-11	155	45.2
	12-17	142	48.0
2/20/2022	0-4	215	96.8
	5-11	298	86.9
	12-17	267	90.2
2/13/2022	0-4	302	135.9
	5-11	466	135.9
	12-17	401	135.4
2/6/2022	0-4	605	272.3
	5-11	1,112	324.4
	12-17	889	300.3
1/30/2022	0-4	974	438.4
	5-11	1,817	530.1
	12-17	1,512	510.7
1/23/2022	0-4	1,555	699.9
	5-11	3,444	1,004.7
	12-17	2,783	939.9
1/16/2022	0-4	2,227	1,002.4
	5-11	5,144	1,500.7
	12-17	4,914	1,659.7
1/9/2022	0-4	2,293	1,032.1
	5-11	5,181	1,511.5
	12-17	5,587	1,887.0
1/2/2022	0-4	1,912	860.6
	5-11	4,583	1,337.0
	12-17	5,139	1,735.7
12/26/2021	0-4	958	431.2
	5-11	1,784	520.4
	12-17	2,060	695.8
12/19/2021	0-4	328	147.6
	5-11	436	127.2
	12-17	637	215.1
12/12/2021	0-4	204	91.8
	5-11	375	109.4
	12-17	398	134.4
12/5/2021	0-4	206	92.7
	5-11	407	118.7
	12-17	398	134.4
11/28/2021	0-4	257	115.7

## 2. Weekly pediatric cases, by age group

Week of Onset	Age Group	Case Count	Case Rate ..
11/28/2021	5-11	534	155.8
	12-17	364	122.9
11/21/2021	0-4	207	93.2
	5-11	453	132.2
	12-17	321	108.4
11/14/2021	0-4	213	95.9
	5-11	499	145.6
	12-17	366	123.6
11/7/2021	0-4	246	110.7
	5-11	603	175.9
	12-17	405	136.8
10/31/2021	0-4	223	100.4
	5-11	555	161.9
	12-17	452	152.7
10/24/2021	0-4	297	133.7
	5-11	705	205.7
	12-17	512	172.9
10/17/2021	0-4	314	141.3
	5-11	731	213.3
	12-17	618	208.7
10/10/2021	0-4	304	136.8
	5-11	745	217.3
	12-17	697	235.4
10/3/2021	0-4	298	134.1
	5-11	802	234.0
	12-17	773	261.1
9/26/2021	0-4	363	163.4
	5-11	928	270.7
	12-17	936	316.1
9/19/2021	0-4	408	183.6
	5-11	1,053	307.2
	12-17	1,005	339.4
9/12/2021	0-4	442	199.0
	5-11	1,050	306.3
	12-17	1,032	348.6
9/5/2021	0-4	501	225.5
	5-11	1,075	313.6
	12-17	1,013	342.1
8/29/2021	0-4	436	196.3
	5-11	864	252.1
	12-17	892	301.3
8/22/2021	0-4	482	217.0
	5-11	877	255.8

## 2. Weekly pediatric cases, by age group

Week of Onset	Age Group	Case Count	Case Rate ..
8/22/2021	12-17	958	323.6
8/15/2021	0-4	481	216.5
	5-11	899	262.3
	12-17	974	329.0
8/8/2021	0-4	380	171.0
	5-11	693	202.2
	12-17	784	264.8
8/1/2021	0-4	283	127.4
	5-11	538	157.0
	12-17	670	226.3
7/25/2021	0-4	202	90.9
	5-11	432	126.0
	12-17	482	162.8
7/18/2021	0-4	107	48.2
	5-11	218	63.6
	12-17	303	102.3
7/11/2021	0-4	63	28.4
	5-11	122	35.6
	12-17	168	56.7
7/4/2021	0-4	37	16.7
	5-11	87	25.4
	12-17	120	40.5
6/27/2021	0-4	45	20.3
	5-11	58	16.9
	12-17	93	31.4
6/20/2021	0-4	36	16.2
	5-11	63	18.4
	12-17	105	35.5
6/13/2021	0-4	41	18.5
	5-11	87	25.4
	12-17	140	47.3
6/6/2021	0-4	46	20.7
	5-11	85	24.8
	12-17	136	45.9
5/30/2021	0-4	51	23.0
	5-11	94	27.4
	12-17	173	58.4
5/23/2021	0-4	58	26.1
	5-11	137	40.0
	12-17	208	70.3
5/16/2021	0-4	85	38.3
	5-11	177	51.6
	12-17	281	94.9

## 2. Weekly pediatric cases, by age group

Week of Onset	Age Group	Case Count	Case Rate ..
5/9/2021	0-4	106	47.7
	5-11	223	65.1
	12-17	345	116.5
5/2/2021	0-4	121	54.5
	5-11	253	73.8
	12-17	414	139.8
4/25/2021	0-4	131	59.0
	5-11	318	92.8
	12-17	499	168.5
4/18/2021	0-4	156	70.2
	5-11	313	91.3
	12-17	443	149.6
4/11/2021	0-4	113	50.9
	5-11	276	80.5
	12-17	391	132.1
4/4/2021	0-4	100	45.0
	5-11	176	51.3
	12-17	324	109.4
3/28/2021	0-4	66	29.7
	5-11	140	40.8
	12-17	239	80.7
3/21/2021	0-4	36	16.2
	5-11	110	32.1
	12-17	155	52.4
3/14/2021	0-4	38	17.1
	5-11	94	27.4
	12-17	178	60.1
3/7/2021	0-4	56	25.2
	5-11	94	27.4
	12-17	146	49.3
2/28/2021	0-4	41	18.5
	5-11	82	23.9
	12-17	122	41.2
2/21/2021	0-4	48	21.6
	5-11	96	28.0
	12-17	146	49.3
2/14/2021	0-4	61	27.5
	5-11	132	38.5
	12-17	171	57.8
2/7/2021	0-4	67	30.2
	5-11	111	32.4
	12-17	179	60.5
1/31/2021	0-4	73	32.9

## 2. Weekly pediatric cases, by age group

Week of Onset	Age Group	Case Count	Case Rate ..
1/31/2021	5-11	116	33.8
	12-17	221	74.6
1/24/2021	0-4	69	31.1
	5-11	141	41.1
	12-17	221	74.6
1/17/2021	0-4	97	43.7
	5-11	168	49.0
	12-17	256	86.5
1/10/2021	0-4	116	52.2
	5-11	194	56.6
	12-17	291	98.3
1/3/2021	0-4	183	82.4
	5-11	304	88.7
	12-17	461	155.7
12/27/2020	0-4	147	66.2
	5-11	291	84.9
	12-17	500	168.9
12/20/2020	0-4	138	62.1
	5-11	187	54.6
	12-17	346	116.9
12/13/2020	0-4	156	70.2
	5-11	234	68.3
	12-17	448	151.3
12/6/2020	0-4	171	77.0
	5-11	325	94.8
	12-17	465	157.1
11/29/2020	0-4	218	98.1
	5-11	317	92.5
	12-17	563	190.2
11/22/2020	0-4	195	87.8
	5-11	304	88.7
	12-17	451	152.3
11/15/2020	0-4	186	83.7
	5-11	325	94.8
	12-17	512	172.9
11/8/2020	0-4	217	97.7
	5-11	281	82.0
	12-17	419	141.5
11/1/2020	0-4	161	72.5
	5-11	262	76.4
	12-17	366	123.6
10/25/2020	0-4	96	43.2
	5-11	175	51.1

## 2. Weekly pediatric cases, by age group

Week of Onset	Age Group	Case Count	Case Rate ..
10/25/2020	12-17	240	81.1
10/18/2020	0-4	87	39.2
	5-11	123	35.9
	12-17	197	66.5
10/11/2020	0-4	58	26.1
	5-11	90	26.3
	12-17	130	43.9
10/4/2020	0-4	58	26.1
	5-11	95	27.7
	12-17	138	46.6
9/27/2020	0-4	61	27.5
	5-11	81	23.6
	12-17	131	44.2
9/20/2020	0-4	45	20.3
	5-11	72	21.0
	12-17	104	35.1
9/13/2020	0-4	44	19.8
	5-11	59	17.2
	12-17	124	41.9
9/6/2020	0-4	34	15.3
	5-11	49	14.3
	12-17	61	20.6
8/30/2020	0-4	27	12.2
	5-11	50	14.6
	12-17	74	25.0
8/23/2020	0-4	29	13.1
	5-11	60	17.5
	12-17	72	24.3
8/16/2020	0-4	45	20.3
	5-11	56	16.3
	12-17	85	28.7
8/9/2020	0-4	53	23.9
	5-11	90	26.3
	12-17	100	33.8
8/2/2020	0-4	35	15.8
	5-11	84	24.5
	12-17	107	36.1
7/26/2020	0-4	46	20.7
	5-11	98	28.6
	12-17	123	41.5
7/19/2020	0-4	71	32.0
	5-11	93	27.1
	12-17	156	52.7



## 2. Weekly pediatric cases, by age group

Week of Onset	Age Group	Case Count	Case Rate ..
7/12/2020	0-4	53	23.9
	5-11	86	25.1
	12-17	142	48.0
7/5/2020	0-4	51	23.0
	5-11	80	23.3
	12-17	148	50.0
6/28/2020	0-4	55	24.8
	5-11	79	23.0
	12-17	121	40.9
6/21/2020	0-4	43	19.4
	5-11	60	17.5
	12-17	97	32.8
6/14/2020	0-4	44	19.8
	5-11	64	18.7
	12-17	64	21.6
6/7/2020	0-4	43	19.4
	5-11	60	17.5
	12-17	85	28.7
5/31/2020	0-4	17	7.7
	5-11	19	5.5
	12-17	30	10.1
5/24/2020	0-4	14	6.3
	5-11	12	3.5
	12-17	18	6.1
5/17/2020	0-4	6	2.7
	5-11	4	1.2
	12-17	9	3.0
5/10/2020	0-4	1	0.5
	5-11	12	3.5
	12-17	15	5.1
5/3/2020	0-4	9	4.1
	5-11	7	2.0
	12-17	10	3.4
4/26/2020	0-4	2	0.9
	5-11	3	0.9
	12-17	11	3.7
4/19/2020	0-4	4	1.8
	5-11	6	1.8
	12-17	10	3.4
4/12/2020	0-4	1	0.5
	5-11	1	0.3
	12-17	3	1.0
4/5/2020	5-11	2	0.6

## 2. Weekly pediatric cases, by age group

Week of Onset	Age Group	Case Count	Case Rate ..
4/5/2020	12-17	3	1.0
3/29/2020	0-4	2	0.9
	5-11	3	0.9
	12-17	3	1.0
3/22/2020	0-4	2	0.9
	12-17	2	0.7
3/15/2020	12-17	2	0.7
3/8/2020	0-4	1	0.5
	5-11	1	0.3
	12-17	3	1.0
3/1/2020	12-17	2	0.7

### 3. Pediatric cases, by sex

Sex	% of Cases	Case Count
Female	47.2%	73,068
Male	48.6%	75,105
Non-Binary	0.0%	34
Not Available	4.2%	6,463

## 4. Pediatric cases, by race

Race	Case Count	Case Rate Pe..
Other	18,553	41,867.1
American Indian/Alaska Native	2,469	23,758.7
Black	3,727	18,813.7
Pacific Islander	477	12,750.6
Asian	4,241	12,332.1
White	61,005	9,308.3
>1 race	2,718	2,922.5
Not Available	61,480	

## 5. Pediatric cases, by ethnicity

Ethnicity	Case Count	Case Rate pe..
Hispanic	22,841	11,865.9
Non-Hispanic	60,841	9,100.6
Unknown	70,988	

## 6. Weekly pediatric case rates, by race

For weeks with case counts of 10 or greater, we can compare case rates by race to **measure the health inequity** experienced by youth in communities of color and Tribal communities. The rate ratio is the the weekly case rate for communities of color and Tribal communities divided by the case rate among people who identify as White.

Week of Onset	Race	Case Count	Rate per 100K	Rate Ratio
1/1/2023	Pacific Is..	<10		
	AI/AN	<10		
	Black	<10		
	>1 race	<10		
	White	85	13.0	1.0
	Asian	<10		
12/25/2022	Pacific Is..	<10		
	AI/AN	<10		
	Black	<10		
	>1 race	<10		
	White	103	15.7	1.0
	Asian	<10		
12/18/2022	AI/AN	<10		
	Black	<10		
	>1 race	<10		
	White	78	11.9	1.0
	Asian	<10		
12/11/2022	Pacific Is..	<10		
	AI/AN	<10		
	Black	<10		
	>1 race	<10		
	White	112	17.1	1.0
	Asian	15	43.6	2.5
12/4/2022	AI/AN	13	125.1	6.1
	Black	<10		
	>1 race	<10		
	White	134	20.4	1.0
	Asian	13	37.8	1.9
11/27/2022	AI/AN	<10		
	Black	15	75.7	3.7
	>1 race	<10		
	White	133	20.3	1.0
	Asian	17	49.4	2.4
11/20/2022	Pacific Is..	<10		
	AI/AN	10	96.2	4.4

## 6. Weekly pediatric case rates, by race

For weeks with case counts of 10 or greater, we can compare case rates by race to **measure the health inequity** experienced by youth in communities of color and Tribal communities. The rate ratio is the the weekly case rate for communities of color and Tribal communities divided by the case rate among people who identify as White.

Week of Onset	Race	Case Count	Rate per 100K	Rate Ratio
11/20/2022	Black	18	90.9	4.2
	>1 race	<10		
	White	143	21.8	1.0
	Asian	<10		
11/13/2022	Pacific Is..	<10		
	AI/AN	<10		
	Black	13	65.6	3.0
	White	144	22.0	1.0
	Asian	<10		
11/6/2022	Pacific Is..	<10		
	AI/AN	<10		
	Black	<10		
	>1 race	<10		
	White	160	24.4	1.0
	Asian	11	32.0	1.3
10/30/2022	Pacific Is..	<10		
	AI/AN	<10		
	Black	<10		
	>1 race	<10		
	White	121	18.5	1.0
	Asian	<10		
10/23/2022	AI/AN	<10		
	Black	<10		
	>1 race	<10		
	White	123	18.8	1.0
	Asian	17	49.4	2.6
10/16/2022	Pacific Is..	<10		
	AI/AN	<10		
	Black	<10		
	>1 race	<10		
	White	105	16.0	1.0
	Asian	12	34.9	2.2
10/9/2022	AI/AN	<10		
	Black	<10		
	>1 race	<10		

## 6. Weekly pediatric case rates, by race

For weeks with case counts of 10 or greater, we can compare case rates by race to **measure the health inequity** experienced by youth in communities of color and Tribal communities. The rate ratio is the the weekly case rate for communities of color and Tribal communities divided by the case rate among people who identify as White.

Week of Onset	Race	Case Count	Rate per 100K	Rate Ratio
10/9/2022	White	106	16.2	1.0
	Asian	15	43.6	2.7
10/2/2022	Pacific Is..	<10		
	AI/AN	<10		
	Black	12	60.6	3.3
	>1 race	<10		
	White	122	18.6	1.0
	Asian	11	32.0	1.7
9/25/2022	AI/AN	<10		
	Black	12	60.6	2.8
	>1 race	<10		
	White	144	22.0	1.0
	Asian	10	29.1	1.3
9/18/2022	Pacific Is..	<10		
	AI/AN	13	125.1	3.3
	Black	<10		
	>1 race	<10		
	White	250	38.1	1.0
	Asian	22	64.0	1.7
9/11/2022	Pacific Is..	<10		
	AI/AN	18	173.2	3.8
	Black	20	101.0	2.2
	>1 race	<10		
	White	301	45.9	1.0
	Asian	16	46.5	1.0
9/4/2022	AI/AN	14	134.7	4.5
	Black	<10		
	>1 race	<10		
	White	197	30.1	1.0
	Asian	20	58.2	1.9
8/28/2022	AI/AN	<10		
	Black	<10		
	>1 race	<10		
	White	168	25.6	1.0
	Asian	22	64.0	2.5



## 6. Weekly pediatric case rates, by race

For weeks with case counts of 10 or greater, we can compare case rates by race to **measure the health inequity** experienced by youth in communities of color and Tribal communities. The rate ratio is the the weekly case rate for communities of color and Tribal communities divided by the case rate among people who identify as White.

Week of Onset	Race	Case Count	Rate per 100K	Rate Ratio
8/21/2022	Pacific Is..	<10		
	AI/AN	<10		
	Black	10	50.5	1.9
	>1 race	11	11.8	0.4
	White	174	26.5	1.0
	Asian	17	49.4	1.9
8/14/2022	AI/AN	16	154.0	5.0
	Black	<10		
	>1 race	<10		
	White	200	30.5	1.0
	Asian	18	52.3	1.7
8/7/2022	Pacific Is..	<10		
	AI/AN	<10		
	Black	14	70.7	2.1
	>1 race	<10		
	White	219	33.4	1.0
	Asian	26	75.6	2.3
7/31/2022	AI/AN	12	115.5	2.8
	Black	16	80.8	2.0
	>1 race	11	11.8	0.3
	White	269	41.0	1.0
	Asian	44	127.9	3.1
7/24/2022	AI/AN	13	125.1	2.6
	Black	19	95.9	2.0
	>1 race	21	22.6	0.5
	White	313	47.8	1.0
	Asian	35	101.8	2.1
7/17/2022	Pacific Is..	<10		
	AI/AN	12	115.5	2.1
	Black	24	121.2	2.2
	>1 race	<10		
	White	357	54.5	1.0
	Asian	41	119.2	2.2
7/10/2022	AI/AN	<10		
	Black	30	151.4	2.9

## 6. Weekly pediatric case rates, by race

For weeks with case counts of 10 or greater, we can compare case rates by race to **measure the health inequity** experienced by youth in communities of color and Tribal communities. The rate ratio is the the weekly case rate for communities of color and Tribal communities divided by the case rate among people who identify as White.

Week of Onset	Race	Case Count	Rate per 100K	Rate Ratio
7/10/2022	>1 race	16	17.2	0.3
	White	342	52.2	1.0
	Asian	61	177.4	3.4
7/3/2022	Pacific Is..	<10		
	AI/AN	12	115.5	1.6
	Black	24	121.2	1.7
	>1 race	14	15.1	0.2
	White	461	70.3	1.0
	Asian	38	110.5	1.6
6/26/2022	Pacific Is..	<10		
	AI/AN	<10		
	Black	30	151.4	2.4
	>1 race	14	15.1	0.2
	White	406	61.9	1.0
	Asian	47	136.7	2.2
6/19/2022	AI/AN	<10		
	Black	32	161.5	2.2
	>1 race	<10		
	White	491	74.9	1.0
	Asian	63	183.2	2.4
6/12/2022	Pacific Is..	<10		
	AI/AN	15	144.3	1.8
	Black	34	171.6	2.1
	>1 race	14	15.1	0.2
	White	537	81.9	1.0
	Asian	70	203.5	2.5
6/5/2022	AI/AN	19	182.8	2.5
	Black	22	111.1	1.5
	>1 race	22	23.7	0.3
	White	470	71.7	1.0
	Asian	49	142.5	2.0
5/29/2022	Pacific Is..	<10		
	AI/AN	<10		
	Black	27	136.3	1.6
	>1 race	19	20.4	0.2

## 6. Weekly pediatric case rates, by race

For weeks with case counts of 10 or greater, we can compare case rates by race to **measure the health inequity** experienced by youth in communities of color and Tribal communities. The rate ratio is the the weekly case rate for communities of color and Tribal communities divided by the case rate among people who identify as White.

Week of Onset	Race	Case Count	Rate per 100K	Rate Ratio
5/29/2022	White	556	84.8	1.0
	Asian	71	206.5	2.4
5/22/2022	Pacific Is..	<10		
	AI/AN	<10		
	Black	30	151.4	1.9
	>1 race	11	11.8	0.1
	White	535	81.6	1.0
	Asian	74	215.2	2.6
5/15/2022	Pacific Is..	<10		
	AI/AN	10	96.2	0.9
	Black	43	217.1	2.1
	>1 race	25	26.9	0.3
	White	685	104.5	1.0
	Asian	101	293.7	2.8
5/8/2022	Pacific Is..	<10		
	AI/AN	11	105.9	1.2
	Black	26	131.2	1.5
	>1 race	84	90.3	1.0
	White	573	87.4	1.0
	Asian	77	223.9	2.6
5/1/2022	AI/AN	20	192.5	2.7
	Black	20	101.0	1.4
	>1 race	86	92.5	1.3
	White	462	70.5	1.0
	Asian	82	238.4	3.4
4/24/2022	AI/AN	20	192.5	3.3
	Black	30	151.4	2.6
	>1 race	74	79.6	1.4
	White	381	58.1	1.0
	Asian	58	168.7	2.9
4/17/2022	Pacific Is..	<10		
	AI/AN	15	144.3	2.9
	Black	27	136.3	2.8
	>1 race	62	66.7	1.4
	White	324	49.4	1.0

## 6. Weekly pediatric case rates, by race

For weeks with case counts of 10 or greater, we can compare case rates by race to **measure the health inequity** experienced by youth in communities of color and Tribal communities. The rate ratio is the the weekly case rate for communities of color and Tribal communities divided by the case rate among people who identify as White.

Week of Onset	Race	Case Count	Rate per 100K	Rate Ratio
4/17/2022	Asian	37	107.6	2.2
4/10/2022	AI/AN	<10		
	Black	12	60.6	1.9
	>1 race	53	57.0	1.8
	White	204	31.1	1.0
	Asian	26	75.6	2.4
4/3/2022	Pacific Is..	<10		
	AI/AN	10	96.2	4.9
	Black	<10		
	>1 race	23	24.7	1.3
	White	129	19.7	1.0
	Asian	18	52.3	2.7
3/27/2022	AI/AN	<10		
	Black	<10		
	>1 race	27	29.0	1.8
	White	103	15.7	1.0
	Asian	18	52.3	3.3
3/20/2022	Pacific Is..	<10		
	AI/AN	<10		
	Black	<10		
	>1 race	15	16.1	1.4
	White	74	11.3	1.0
	Asian	<10		
3/13/2022	AI/AN	<10		
	Black	<10		
	>1 race	12	12.9	1.0
	White	83	12.7	1.0
	Asian	<10		
3/6/2022	AI/AN	<10		
	Black	<10		
	>1 race	<10		
	White	87	13.3	1.0
	Asian	<10		
2/27/2022	Pacific Is..	<10		
	AI/AN	<10		

## 6. Weekly pediatric case rates, by race

For weeks with case counts of 10 or greater, we can compare case rates by race to **measure the health inequity** experienced by youth in communities of color and Tribal communities. The rate ratio is the the weekly case rate for communities of color and Tribal communities divided by the case rate among people who identify as White.

Week of Onset	Race	Case Count	Rate per 100K	Rate Ratio
2/27/2022	Black	<10		
	>1 race	12	12.9	0.5
	White	168	25.6	1.0
	Asian	<10		
2/20/2022	Pacific Is..	<10		
	AI/AN	14	134.7	3.1
	Black	16	80.8	1.8
	>1 race	10	10.8	0.2
	White	288	43.9	1.0
	Asian	15	43.6	1.0
2/13/2022	Pacific Is..	<10		
	AI/AN	<10		
	Black	18	90.9	1.4
	>1 race	<10		
	White	434	66.2	1.0
	Asian	32	93.1	1.4
2/6/2022	Pacific Is..	<10		
	AI/AN	34	327.2	2.7
	Black	41	207.0	1.7
	>1 race	15	16.1	0.1
	White	787	120.1	1.0
	Asian	59	171.6	1.4
1/30/2022	Pacific Is..	<10		
	AI/AN	77	741.0	3.2
	Black	82	413.9	1.8
	>1 race	22	23.7	0.1
	White	1507	229.9	1.0
	Asian	100	290.8	1.3
1/23/2022	Pacific Is..	11	294.0	0.7
	AI/AN	110	1,058.5	2.6
	Black	123	620.9	1.5
	>1 race	59	63.4	0.2
	White	2645	403.6	1.0
	Asian	164	476.9	1.2
1/16/2022	Pacific Is..	<10		

## 6. Weekly pediatric case rates, by race

For weeks with case counts of 10 or greater, we can compare case rates by race to **measure the health inequity** experienced by youth in communities of color and Tribal communities. The rate ratio is the the weekly case rate for communities of color and Tribal communities divided by the case rate among people who identify as White.

Week of Onset	Race	Case Count	Rate per 100K	Rate Ratio
1/16/2022	AI/AN	163	1,568.5	2.4
	Black	240	1,211.5	1.9
	>1 race	73	78.5	0.1
	White	4210	642.4	1.0
	Asian	300	872.3	1.4
1/9/2022	Pacific Is..	10	267.3	0.4
	AI/AN	147	1,414.5	2.0
	Black	324	1,635.5	2.3
	>1 race	86	92.5	0.1
	White	4574	697.9	1.0
	Asian	360	1,046.8	1.5
1/2/2022	Pacific Is..	<10		
	AI/AN	148	1,424.2	2.3
	Black	327	1,650.7	2.6
	>1 race	84	90.3	0.1
	White	4090	624.1	1.0
	Asian	389	1,131.1	1.8
12/26/2021	Pacific Is..	<10		
	AI/AN	57	548.5	1.8
	Black	186	938.9	3.1
	>1 race	49	52.7	0.2
	White	1958	298.8	1.0
	Asian	202	587.4	2.0
12/19/2021	Pacific Is..	<10		
	AI/AN	31	298.3	3.2
	Black	57	287.7	3.1
	>1 race	25	26.9	0.3
	White	618	94.3	1.0
	Asian	40	116.3	1.2
12/12/2021	Pacific Is..	<10		
	AI/AN	10	96.2	1.3
	Black	20	101.0	1.4
	>1 race	17	18.3	0.3
	White	467	71.3	1.0
	Asian	24	69.8	1.0

## 6. Weekly pediatric case rates, by race

For weeks with case counts of 10 or greater, we can compare case rates by race to **measure the health inequity** experienced by youth in communities of color and Tribal communities. The rate ratio is the the weekly case rate for communities of color and Tribal communities divided by the case rate among people who identify as White.

Week of Onset	Race	Case Count	Rate per 100K	Rate Ratio
12/5/2021	Pacific Is..	<10		
	AI/AN	15	144.3	2.0
	Black	27	136.3	1.9
	>1 race	19	20.4	0.3
	White	474	72.3	1.0
	Asian	20	58.2	0.8
11/28/2021	Pacific Is..	<10		
	AI/AN	24	230.9	2.9
	Black	24	121.2	1.5
	>1 race	16	17.2	0.2
	White	530	80.9	1.0
	Asian	28	81.4	1.0
11/21/2021	Pacific Is..	<10		
	AI/AN	30	288.7	4.2
	Black	16	80.8	1.2
	>1 race	22	23.7	0.3
	White	454	69.3	1.0
	Asian	17	49.4	0.7
11/14/2021	Pacific Is..	<10		
	AI/AN	24	230.9	2.9
	Black	25	126.2	1.6
	>1 race	22	23.7	0.3
	White	523	79.8	1.0
	Asian	22	64.0	0.8
11/7/2021	Pacific Is..	<10		
	AI/AN	32	307.9	3.5
	Black	18	90.9	1.0
	>1 race	30	32.3	0.4
	White	570	87.0	1.0
	Asian	26	75.6	0.9
10/31/2021	Pacific Is..	<10		
	AI/AN	15	144.3	1.7
	Black	17	85.8	1.0
	>1 race	31	33.3	0.4
	White	563	85.9	1.0

## 6. Weekly pediatric case rates, by race

For weeks with case counts of 10 or greater, we can compare case rates by race to **measure the health inequity** experienced by youth in communities of color and Tribal communities. The rate ratio is the the weekly case rate for communities of color and Tribal communities divided by the case rate among people who identify as White.

Week of Onset	Race	Case Count	Rate per 100K	Rate Ratio
10/31/2021	Asian	23	66.9	0.8
10/24/2021	Pacific Is..	<10		
	AI/AN	26	250.2	2.2
	Black	27	136.3	1.2
	>1 race	31	33.3	0.3
	White	753	114.9	1.0
	Asian	22	64.0	0.6
10/17/2021	Pacific Is..	<10		
	AI/AN	45	433.0	3.4
	Black	52	262.5	2.1
	>1 race	25	26.9	0.2
	White	832	126.9	1.0
	Asian	26	75.6	0.6
10/10/2021	Pacific Is..	<10		
	AI/AN	25	240.6	1.9
	Black	28	141.3	1.1
	>1 race	34	36.6	0.3
	White	831	126.8	1.0
	Asian	29	84.3	0.7
10/3/2021	Pacific Is..	<10		
	AI/AN	29	279.1	2.2
	Black	35	176.7	1.4
	>1 race	19	20.4	0.2
	White	820	125.1	1.0
	Asian	31	90.1	0.7
9/26/2021	Pacific Is..	<10		
	AI/AN	36	346.4	2.4
	Black	35	176.7	1.2
	>1 race	24	25.8	0.2
	White	959	146.3	1.0
	Asian	39	113.4	0.8
9/19/2021	Pacific Is..	<10		
	AI/AN	46	442.6	2.6
	Black	65	328.1	1.9
	>1 race	44	47.3	0.3



## 6. Weekly pediatric case rates, by race

For weeks with case counts of 10 or greater, we can compare case rates by race to **measure the health inequity** experienced by youth in communities of color and Tribal communities. The rate ratio is the the weekly case rate for communities of color and Tribal communities divided by the case rate among people who identify as White.

Week of Onset	Race	Case Count	Rate per 100K	Rate Ratio
9/19/2021	White	1122	171.2	1.0
	Asian	38	110.5	0.6
9/12/2021	Pacific Is..	13	347.5	2.0
	AI/AN	29	279.1	1.6
	Black	58	292.8	1.7
	>1 race	53	57.0	0.3
	White	1125	171.7	1.0
	Asian	50	145.4	0.8
	9/5/2021	Pacific Is..	18	481.2
	AI/AN	37	356.0	1.9
	Black	45	227.2	1.2
	>1 race	52	55.9	0.3
	White	1221	186.3	1.0
	Asian	41	119.2	0.6
8/29/2021	Pacific Is..	11	294.0	1.8
	AI/AN	28	269.4	1.7
	Black	36	181.7	1.1
	>1 race	45	48.4	0.3
	White	1052	160.5	1.0
	Asian	29	84.3	0.5
8/22/2021	Pacific Is..	<10		
	AI/AN	43	413.8	2.5
	Black	53	267.5	1.6
	>1 race	52	55.9	0.3
	White	1070	163.3	1.0
	Asian	16	46.5	0.3
8/15/2021	Pacific Is..	12	320.8	1.9
	AI/AN	26	250.2	1.5
	Black	34	171.6	1.0
	>1 race	55	59.1	0.3
	White	1127	172.0	1.0
	Asian	39	113.4	0.7
8/8/2021	Pacific Is..	11	294.0	2.2
	AI/AN	31	298.3	2.2
	Black	42	212.0	1.6

## 6. Weekly pediatric case rates, by race

For weeks with case counts of 10 or greater, we can compare case rates by race to **measure the health inequity** experienced by youth in communities of color and Tribal communities. The rate ratio is the the weekly case rate for communities of color and Tribal communities divided by the case rate among people who identify as White.

Week of Onset	Race	Case Count	Rate per 100K	Rate Ratio
8/8/2021	>1 race	58	62.4	0.5
	White	881	134.4	1.0
	Asian	20	58.2	0.4
8/1/2021	Pacific Is..	<10		
	AI/AN	22	211.7	1.9
	Black	40	201.9	1.8
	>1 race	45	48.4	0.4
	White	737	112.5	1.0
	Asian	16	46.5	0.4
7/25/2021	Pacific Is..	<10		
	AI/AN	18	173.2	1.9
	Black	30	151.4	1.7
	>1 race	30	32.3	0.4
	White	600	91.5	1.0
	Asian	19	55.2	0.6
7/18/2021	Pacific Is..	<10		
	AI/AN	11	105.9	1.8
	Black	21	106.0	1.8
	>1 race	24	25.8	0.4
	White	378	57.7	1.0
	Asian	<10		
7/11/2021	Pacific Is..	<10		
	AI/AN	<10		
	Black	14	70.7	2.4
	>1 race	13	14.0	0.5
	White	190	29.0	1.0
	Asian	<10		
7/4/2021	Pacific Is..	<10		
	AI/AN	<10		
	Black	<10		
	>1 race	<10		
	White	154	23.5	1.0
	Asian	<10		
6/27/2021	Pacific Is..	<10		
	AI/AN	<10		

## 6. Weekly pediatric case rates, by race

For weeks with case counts of 10 or greater, we can compare case rates by race to **measure the health inequity** experienced by youth in communities of color and Tribal communities. The rate ratio is the the weekly case rate for communities of color and Tribal communities divided by the case rate among people who identify as White.

Week of Onset	Race	Case Count	Rate per 100K	Rate Ratio
6/27/2021	Black	<10		
	>1 race	<10		
	White	116	17.7	1.0
	Asian	<10		
6/20/2021	AI/AN	<10		
	Black	15	75.7	4.2
	>1 race	<10		
	White	119	18.2	1.0
6/13/2021	Asian	<10		
	Pacific Is..	<10		
	AI/AN	<10		
	Black	13	65.6	3.0
	>1 race	<10		
	White	145	22.1	1.0
6/6/2021	Asian	<10		
	Pacific Is..	<10		
	AI/AN	<10		
	Black	13	65.6	2.8
	>1 race	<10		
	White	156	23.8	1.0
5/30/2021	Asian	<10		
	Pacific Is..	<10		
	AI/AN	<10		
	Black	<10		
	>1 race	13	14.0	0.5
	White	185	28.2	1.0
5/23/2021	Asian	<10		
	Pacific Is..	<10		
	AI/AN	12	115.5	3.4
	Black	11	55.5	1.6
	>1 race	15	16.1	0.5
	White	222	33.9	1.0
5/16/2021	Asian	<10		
	Pacific Is..	<10		
5/16/2021	AI/AN	13	125.1	3.0
	Black	<10		

## 6. Weekly pediatric case rates, by race

For weeks with case counts of 10 or greater, we can compare case rates by race to **measure the health inequity** experienced by youth in communities of color and Tribal communities. The rate ratio is the the weekly case rate for communities of color and Tribal communities divided by the case rate among people who identify as White.

Week of Onset	Race	Case Count	Rate per 100K	Rate Ratio
5/16/2021	Black	28	141.3	3.4
	>1 race	18	19.4	0.5
	White	271	41.4	1.0
	Asian	18	52.3	1.3
5/9/2021	Pacific Is..	<10		
	AI/AN	13	125.1	2.4
	Black	26	131.2	2.5
	>1 race	26	28.0	0.5
	White	340	51.9	1.0
	Asian	19	55.2	1.1
5/2/2021	Pacific Is..	<10		
	AI/AN	14	134.7	2.2
	Black	24	121.2	1.9
	>1 race	31	33.3	0.5
	White	409	62.4	1.0
	Asian	22	64.0	1.0
4/25/2021	Pacific Is..	<10		
	AI/AN	22	211.7	2.8
	Black	40	201.9	2.7
	>1 race	29	31.2	0.4
	White	495	75.5	1.0
	Asian	31	90.1	1.2
4/18/2021	Pacific Is..	12	320.8	4.8
	AI/AN	10	96.2	1.4
	Black	42	212.0	3.2
	>1 race	32	34.4	0.5
	White	441	67.3	1.0
	Asian	22	64.0	1.0
4/11/2021	Pacific Is..	<10		
	AI/AN	15	144.3	2.2
	Black	27	136.3	2.1
	>1 race	45	48.4	0.8
	White	422	64.4	1.0
	Asian	21	61.1	0.9
4/4/2021	Pacific Is..	<10		

## 6. Weekly pediatric case rates, by race

For weeks with case counts of 10 or greater, we can compare case rates by race to **measure the health inequity** experienced by youth in communities of color and Tribal communities. The rate ratio is the the weekly case rate for communities of color and Tribal communities divided by the case rate among people who identify as White.

Week of Onset	Race	Case Count	Rate per 100K	Rate Ratio
4/4/2021	AI/AN	20	192.5	4.0
	Black	23	116.1	2.4
	>1 race	33	35.5	0.7
	White	317	48.4	1.0
	Asian	17	49.4	1.0
3/28/2021	Pacific Is..	<10		
	AI/AN	<10		
	Black	24	121.2	3.1
	>1 race	17	18.3	0.5
	White	260	39.7	1.0
	Asian	17	49.4	1.2
3/21/2021	AI/AN	<10		
	Black	11	55.5	2.1
	>1 race	14	15.1	0.6
	White	170	25.9	1.0
	Asian	<10		
3/14/2021	Pacific Is..	<10		
	AI/AN	<10		
	Black	13	65.6	2.5
	>1 race	<10		
	White	173	26.4	1.0
	Asian	<10		
3/7/2021	Pacific Is..	<10		
	AI/AN	<10		
	Black	17	85.8	3.8
	>1 race	15	16.1	0.7
	White	149	22.7	1.0
	Asian	<10		
2/28/2021	AI/AN	<10		
	Black	<10		
	>1 race	<10		
	White	127	19.4	1.0
	Asian	<10		
2/21/2021	Pacific Is..	<10		
	AI/AN	<10		

## 6. Weekly pediatric case rates, by race

For weeks with case counts of 10 or greater, we can compare case rates by race to **measure the health inequity** experienced by youth in communities of color and Tribal communities. The rate ratio is the the weekly case rate for communities of color and Tribal communities divided by the case rate among people who identify as White.

Week of Onset	Race	Case Count	Rate per 100K	Rate Ratio
2/21/2021	Black	<10		
	>1 race	14	15.1	0.7
	White	141	21.5	1.0
	Asian	<10		
2/14/2021	Pacific Is..	<10		
	AI/AN	12	115.5	4.2
	Black	15	75.7	2.7
	>1 race	<10		
	White	182	27.8	1.0
	Asian	<10		
2/7/2021	Pacific Is..	<10		
	AI/AN	10	96.2	3.3
	Black	11	55.5	1.9
	>1 race	10	10.8	0.4
	White	191	29.1	1.0
	Asian	<10		
1/31/2021	Pacific Is..	10	267.3	8.4
	AI/AN	11	105.9	3.3
	Black	<10		
	>1 race	11	11.8	0.4
	White	209	31.9	1.0
	Asian	<10		
1/24/2021	Pacific Is..	<10		
	AI/AN	<10		
	Black	15	75.7	2.4
	>1 race	17	18.3	0.6
	White	211	32.2	1.0
	Asian	<10		
1/17/2021	Pacific Is..	<10		
	AI/AN	14	134.7	3.6
	Black	<10		
	>1 race	13	14.0	0.4
	White	248	37.8	1.0
	Asian	<10		
1/10/2021	Pacific Is..	<10		

## 6. Weekly pediatric case rates, by race

For weeks with case counts of 10 or greater, we can compare case rates by race to **measure the health inequity** experienced by youth in communities of color and Tribal communities. The rate ratio is the the weekly case rate for communities of color and Tribal communities divided by the case rate among people who identify as White.

Week of Onset	Race	Case Count	Rate per 100K	Rate Ratio
1/10/2021	AI/AN	15	144.3	3.7
	Black	14	70.7	1.8
	>1 race	18	19.4	0.5
	White	255	38.9	1.0
	Asian	<10		
1/3/2021	Pacific Is..	<10		
	AI/AN	19	182.8	2.9
	Black	32	161.5	2.5
	>1 race	21	22.6	0.4
	White	416	63.5	1.0
	Asian	23	66.9	1.1
12/27/2020	Pacific Is..	<10		
	AI/AN	16	154.0	2.5
	Black	23	116.1	1.9
	>1 race	23	24.7	0.4
	White	396	60.4	1.0
	Asian	15	43.6	0.7
12/20/2020	Pacific Is..	<10		
	AI/AN	19	182.8	4.8
	Black	18	90.9	2.4
	>1 race	13	14.0	0.4
	White	251	38.3	1.0
	Asian	18	52.3	1.4
12/13/2020	Pacific Is..	<10		
	AI/AN	24	230.9	4.5
	Black	14	70.7	1.4
	>1 race	13	14.0	0.3
	White	339	51.7	1.0
	Asian	28	81.4	1.6
12/6/2020	Pacific Is..	<10		
	AI/AN	29	279.1	4.9
	Black	24	121.2	2.1
	>1 race	27	29.0	0.5
	White	373	56.9	1.0
	Asian	21	61.1	1.1

## 6. Weekly pediatric case rates, by race

For weeks with case counts of 10 or greater, we can compare case rates by race to **measure the health inequity** experienced by youth in communities of color and Tribal communities. The rate ratio is the the weekly case rate for communities of color and Tribal communities divided by the case rate among people who identify as White.

Week of Onset	Race	Case Count	Rate per 100K	Rate Ratio
11/29/2020	Pacific Is..	12	320.8	5.5
	AI/AN	39	375.3	6.5
	Black	31	156.5	2.7
	>1 race	26	28.0	0.5
	White	380	58.0	1.0
	Asian	46	133.8	2.3
11/22/2020	Pacific Is..	<10		
	AI/AN	21	202.1	4.1
	Black	21	106.0	2.2
	>1 race	18	19.4	0.4
	White	323	49.3	1.0
	Asian	26	75.6	1.5
11/15/2020	Pacific Is..	<10		
	AI/AN	28	269.4	4.9
	Black	17	85.8	1.6
	>1 race	23	24.7	0.4
	White	360	54.9	1.0
	Asian	29	84.3	1.5
11/8/2020	Pacific Is..	15	401.0	8.2
	AI/AN	31	298.3	6.1
	Black	31	156.5	3.2
	>1 race	20	21.5	0.4
	White	320	48.8	1.0
	Asian	26	75.6	1.5
11/1/2020	Pacific Is..	<10		
	AI/AN	11	105.9	2.3
	Black	20	101.0	2.2
	>1 race	25	26.9	0.6
	White	304	46.4	1.0
	Asian	25	72.7	1.6
10/25/2020	Pacific Is..	<10		
	AI/AN	<10		
	Black	11	55.5	2.0
	>1 race	10	10.8	0.4
	White	180	27.5	1.0



## 6. Weekly pediatric case rates, by race

For weeks with case counts of 10 or greater, we can compare case rates by race to **measure the health inequity** experienced by youth in communities of color and Tribal communities. The rate ratio is the the weekly case rate for communities of color and Tribal communities divided by the case rate among people who identify as White.

Week of Onset	Race	Case Count	Rate per 100K	Rate Ratio
10/25/2020	Asian	10	29.1	1.1
10/18/2020	AI/AN	16	154.0	7.5
	Black	<10		
	>1 race	17	18.3	0.9
	White	134	20.4	1.0
	Asian	<10		
10/11/2020	Pacific Is..	<10		
	AI/AN	<10		
	Black	<10		
	>1 race	<10		
	White	87	13.3	1.0
	Asian	<10		
10/4/2020	Pacific Is..	<10		
	AI/AN	<10		
	Black	10	50.5	3.3
	>1 race	<10		
	White	99	15.1	1.0
	Asian	<10		
9/27/2020	AI/AN	<10		
	Black	11	55.5	3.1
	>1 race	<10		
	White	118	18.0	1.0
	Asian	<10		
9/20/2020	Pacific Is..	<10		
	AI/AN	<10		
	Black	<10		
	>1 race	<10		
	White	87	13.3	1.0
	Asian	<10		
9/13/2020	Pacific Is..	<10		
	AI/AN	15	144.3	9.4
	Black	<10		
	>1 race	<10		
	White	100	15.3	1.0
	Asian	<10		

## 6. Weekly pediatric case rates, by race

For weeks with case counts of 10 or greater, we can compare case rates by race to **measure the health inequity** experienced by youth in communities of color and Tribal communities. The rate ratio is the the weekly case rate for communities of color and Tribal communities divided by the case rate among people who identify as White.

Week of Onset	Race	Case Count	Rate per 100K	Rate Ratio
9/6/2020	AI/AN	<10		
	Black	<10		
	>1 race	<10		
	White	49	7.5	1.0
	Asian	<10		
8/30/2020	Pacific Is..	<10		
	AI/AN	<10		
	Black	<10		
	>1 race	<10		
	White	49	7.5	1.0
	Asian	<10		
8/23/2020	AI/AN	<10		
	Black	<10		
	White	40	6.1	1.0
	Asian	<10		
8/16/2020	Pacific Is..	<10		
	AI/AN	<10		
	Black	11	55.5	6.2
	>1 race	<10		
	White	59	9.0	1.0
	Asian	<10		
8/9/2020	Pacific Is..	<10		
	AI/AN	<10		
	Black	15	75.7	7.6
	>1 race	<10		
	White	65	9.9	1.0
	Asian	<10		
8/2/2020	Pacific Is..	<10		
	AI/AN	<10		
	Black	<10		
	>1 race	<10		
	White	61	9.3	1.0
	Asian	<10		
7/26/2020	Pacific Is..	<10		
	AI/AN	12	115.5	11.8

## 6. Weekly pediatric case rates, by race

For weeks with case counts of 10 or greater, we can compare case rates by race to **measure the health inequity** experienced by youth in communities of color and Tribal communities. The rate ratio is the the weekly case rate for communities of color and Tribal communities divided by the case rate among people who identify as White.

Week of Onset	Race	Case Count	Rate per 100K	Rate Ratio
7/26/2020	Black	<10		
	>1 race	<10		
	White	64	9.8	1.0
	Asian	<10		
7/19/2020	Pacific Is..	<10		
	AI/AN	14	134.7	10.1
	Black	11	55.5	4.1
	>1 race	<10		
	White	88	13.4	1.0
	Asian	<10		
7/12/2020	Pacific Is..	<10		
	AI/AN	18	173.2	12.5
	Black	<10		
	>1 race	<10		
	White	91	13.9	1.0
	Asian	<10		
7/5/2020	Pacific Is..	<10		
	AI/AN	<10		
	Black	11	55.5	4.1
	>1 race	<10		
	White	89	13.6	1.0
	Asian	<10		
6/28/2020	Pacific Is..	<10		
	AI/AN	<10		
	Black	13	65.6	5.9
	>1 race	<10		
	White	73	11.1	1.0
	Asian	<10		
6/21/2020	Pacific Is..	<10		
	AI/AN	14	134.7	19.5
	Black	11	55.5	8.0
	>1 race	<10		
	White	45	6.9	1.0
	Asian	<10		
6/14/2020	Pacific Is..	<10		

## 6. Weekly pediatric case rates, by race

For weeks with case counts of 10 or greater, we can compare case rates by race to **measure the health inequity** experienced by youth in communities of color and Tribal communities. The rate ratio is the the weekly case rate for communities of color and Tribal communities divided by the case rate among people who identify as White.

Week of Onset	Race	Case Count	Rate per 100K	Rate Ratio
6/14/2020	AI/AN	<10		
	Black	27	136.3	18.7
	>1 race	<10		
	White	48	7.3	1.0
	Asian	15	43.6	6.0
6/7/2020	Pacific Is..	17	454.4	82.6
	AI/AN	<10		
	Black	21	106.0	19.3
	>1 race	30	32.3	5.9
	White	36	5.5	1.0
	Asian	11	32.0	5.8
5/31/2020	Pacific Is..	<10		
	AI/AN	<10		
	Black	<10		
	>1 race	<10		
	White	11	1.7	1.0
	Asian	<10		
5/24/2020	Pacific Is..	<10		
	AI/AN	15	144.3	
	Black	<10		
	White	<10		
	Asian	<10		

## 7. Weekly pediatric case rates, by ethnicity

For weeks with case counts of 10 or greater, we can compare case rates by ethnicity to **measure the health inequity** experienced by youth who identify as Hispanic. The rate ratio is the weekly Hispanic case rate divided by the non-Hispanic case rate.

Week of Onset	Ethnicity	Case Count	Rate per 100K	Rate Ratio
1/1/2023	Hispanic	19	9.9	0.9
	Non-Hispanic	76	11.4	1.0
12/25/2022	Hispanic	27	14.0	1.0
	Non-Hispanic	94	14.1	1.0
12/18/2022	Hispanic	21	10.9	0.9
	Non-Hispanic	79	11.8	1.0
12/11/2022	Hispanic	32	16.6	0.9
	Non-Hispanic	120	17.9	1.0
12/4/2022	Hispanic	38	19.7	1.0
	Non-Hispanic	132	19.7	1.0
11/27/2022	Hispanic	40	20.8	1.0
	Non-Hispanic	133	19.9	1.0
11/20/2022	Hispanic	52	27.0	1.3
	Non-Hispanic	142	21.2	1.0
11/13/2022	Hispanic	42	21.8	1.0
	Non-Hispanic	143	21.4	1.0
11/6/2022	Hispanic	31	16.1	0.8
	Non-Hispanic	129	19.3	1.0
10/30/2022	Hispanic	25	13.0	0.8
	Non-Hispanic	102	15.3	1.0
10/23/2022	Hispanic	23	11.9	0.7
	Non-Hispanic	109	16.3	1.0
10/16/2022	Hispanic	18	9.4	0.7
	Non-Hispanic	96	14.4	1.0
10/9/2022	Hispanic	28	14.5	0.9
	Non-Hispanic	103	15.4	1.0
10/2/2022	Hispanic	29	15.1	0.9
	Non-Hispanic	117	17.5	1.0
9/25/2022	Hispanic	43	22.3	1.1
	Non-Hispanic	136	20.3	1.0
9/18/2022	Hispanic	75	39.0	1.1
	Non-Hispanic	239	35.7	1.0
9/11/2022	Hispanic	78	40.5	0.9
	Non-Hispanic	297	44.4	1.0
9/4/2022	Hispanic	81	42.1	1.6
	Non-Hispanic	179	26.8	1.0

## 7. Weekly pediatric case rates, by ethnicity

For weeks with case counts of 10 or greater, we can compare case rates by ethnicity to **measure the health inequity** experienced by youth who identify as Hispanic. The rate ratio is the weekly Hispanic case rate divided by the non-Hispanic case rate.

Week of Onset	Ethnicity	Case Count	Rate per 100K	Rate Ratio
8/28/2022	Hispanic	54	28.1	1.0
	Non-Hispanic	179	26.8	1.0
8/21/2022	Hispanic	48	24.9	1.0
	Non-Hispanic	172	25.7	1.0
8/14/2022	Hispanic	94	48.8	1.6
	Non-Hispanic	199	29.8	1.0
8/7/2022	Hispanic	85	44.2	1.4
	Non-Hispanic	205	30.7	1.0
7/31/2022	Hispanic	80	41.6	1.0
	Non-Hispanic	285	42.6	1.0
7/24/2022	Hispanic	114	59.2	1.3
	Non-Hispanic	300	44.9	1.0
7/17/2022	Hispanic	92	47.8	0.9
	Non-Hispanic	354	53.0	1.0
7/10/2022	Hispanic	95	49.4	0.9
	Non-Hispanic	364	54.4	1.0
7/3/2022	Hispanic	135	70.1	1.0
	Non-Hispanic	449	67.2	1.0
6/26/2022	Hispanic	108	56.1	0.9
	Non-Hispanic	402	60.1	1.0
6/19/2022	Hispanic	132	68.6	1.0
	Non-Hispanic	483	72.2	1.0
6/12/2022	Hispanic	128	66.5	0.8
	Non-Hispanic	545	81.5	1.0
6/5/2022	Hispanic	124	64.4	0.9
	Non-Hispanic	481	71.9	1.0
5/29/2022	Hispanic	141	73.2	0.8
	Non-Hispanic	583	87.2	1.0
5/22/2022	Hispanic	113	58.7	0.7
	Non-Hispanic	560	83.8	1.0
5/15/2022	Hispanic	120	62.3	0.6
	Non-Hispanic	749	112.0	1.0
5/8/2022	Hispanic	98	50.9	0.5
	Non-Hispanic	652	97.5	1.0
5/1/2022	Hispanic	83	43.1	0.5
	Non-Hispanic	583	87.2	1.0

## 7. Weekly pediatric case rates, by ethnicity

For weeks with case counts of 10 or greater, we can compare case rates by ethnicity to **measure the health inequity** experienced by youth who identify as Hispanic. The rate ratio is the weekly Hispanic case rate divided by the non-Hispanic case rate.

Week of Onset	Ethnicity	Case Count	Rate per 100K	Rate Ratio
4/24/2022	Hispanic	83	43.1	0.6
	Non-Hispanic	497	74.3	1.0
4/17/2022	Hispanic	63	32.7	0.5
	Non-Hispanic	416	62.2	1.0
4/10/2022	Hispanic	39	20.3	0.5
	Non-Hispanic	298	44.6	1.0
4/3/2022	Hispanic	33	17.1	0.7
	Non-Hispanic	174	26.0	1.0
3/27/2022	Hispanic	17	8.8	0.4
	Non-Hispanic	159	23.8	1.0
3/20/2022	Hispanic	15	7.8	0.5
	Non-Hispanic	98	14.7	1.0
3/13/2022	Hispanic	13	6.8	0.5
	Non-Hispanic	93	13.9	1.0
3/6/2022	Hispanic	27	14.0	0.9
	Non-Hispanic	104	15.6	1.0
2/27/2022	Hispanic	41	21.3	0.9
	Non-Hispanic	166	24.8	1.0
2/20/2022	Hispanic	55	28.6	0.6
	Non-Hispanic	300	44.9	1.0
2/13/2022	Hispanic	127	66.0	1.0
	Non-Hispanic	434	64.9	1.0
2/6/2022	Hispanic	318	165.2	1.4
	Non-Hispanic	812	121.5	1.0
1/30/2022	Hispanic	503	261.3	1.2
	Non-Hispanic	1503	224.8	1.0
1/23/2022	Hispanic	904	469.6	1.2
	Non-Hispanic	2692	402.7	1.0
1/16/2022	Hispanic	1573	817.2	1.3
	Non-Hispanic	4224	631.8	1.0
1/9/2022	Hispanic	1684	874.8	1.3
	Non-Hispanic	4545	679.8	1.0
1/2/2022	Hispanic	1496	777.2	1.2
	Non-Hispanic	4219	631.1	1.0
12/26/2021	Hispanic	599	311.2	1.0
	Non-Hispanic	2109	315.5	1.0

## 7. Weekly pediatric case rates, by ethnicity

For weeks with case counts of 10 or greater, we can compare case rates by ethnicity to **measure the health inequity** experienced by youth who identify as Hispanic. The rate ratio is the weekly Hispanic case rate divided by the non-Hispanic case rate.

Week of Onset	Ethnicity	Case Count	Rate per 100K	Rate Ratio
12/19/2021	Hispanic	157	81.6	0.8
	Non-Hispanic	651	97.4	1.0
12/12/2021	Hispanic	112	58.2	0.8
	Non-Hispanic	487	72.8	1.0
12/5/2021	Hispanic	108	56.1	0.8
	Non-Hispanic	489	73.1	1.0
11/28/2021	Hispanic	138	71.7	0.9
	Non-Hispanic	550	82.3	1.0
11/21/2021	Hispanic	110	57.1	0.8
	Non-Hispanic	484	72.4	1.0
11/14/2021	Hispanic	100	51.9	0.6
	Non-Hispanic	542	81.1	1.0
11/7/2021	Hispanic	105	54.5	0.6
	Non-Hispanic	564	84.4	1.0
10/31/2021	Hispanic	129	67.0	0.8
	Non-Hispanic	575	86.0	1.0
10/24/2021	Hispanic	178	92.5	1.0
	Non-Hispanic	631	94.4	1.0
10/17/2021	Hispanic	201	104.4	1.0
	Non-Hispanic	723	108.1	1.0
10/10/2021	Hispanic	221	114.8	1.2
	Non-Hispanic	661	98.9	1.0
10/3/2021	Hispanic	162	84.2	1.0
	Non-Hispanic	574	85.9	1.0
9/26/2021	Hispanic	217	112.7	1.2
	Non-Hispanic	624	93.3	1.0
9/19/2021	Hispanic	256	133.0	0.9
	Non-Hispanic	990	148.1	1.0
9/12/2021	Hispanic	310	161.0	1.0
	Non-Hispanic	1065	159.3	1.0
9/5/2021	Hispanic	344	178.7	1.1
	Non-Hispanic	1047	156.6	1.0
8/29/2021	Hispanic	266	138.2	1.0
	Non-Hispanic	901	134.8	1.0
8/22/2021	Hispanic	271	140.8	1.0
	Non-Hispanic	983	147.0	1.0



## 7. Weekly pediatric case rates, by ethnicity

For weeks with case counts of 10 or greater, we can compare case rates by ethnicity to **measure the health inequity** experienced by youth who identify as Hispanic. The rate ratio is the weekly Hispanic case rate divided by the non-Hispanic case rate.

Week of Onset	Ethnicity	Case Count	Rate per 100K	Rate Ratio
8/15/2021	Hispanic	296	153.8	1.0
	Non-Hispanic	1021	152.7	1.0
8/8/2021	Hispanic	236	122.6	1.0
	Non-Hispanic	830	124.2	1.0
8/1/2021	Hispanic	193	100.3	0.9
	Non-Hispanic	717	107.2	1.0
7/25/2021	Hispanic	152	79.0	0.9
	Non-Hispanic	570	85.3	1.0
7/18/2021	Hispanic	88	45.7	0.8
	Non-Hispanic	368	55.0	1.0
7/11/2021	Hispanic	64	33.2	1.1
	Non-Hispanic	204	30.5	1.0
7/4/2021	Hispanic	47	24.4	1.1
	Non-Hispanic	151	22.6	1.0
6/27/2021	Hispanic	27	14.0	0.8
	Non-Hispanic	120	17.9	1.0
6/20/2021	Hispanic	27	14.0	0.7
	Non-Hispanic	134	20.0	1.0
6/13/2021	Hispanic	62	32.2	1.4
	Non-Hispanic	150	22.4	1.0
6/6/2021	Hispanic	46	23.9	1.0
	Non-Hispanic	160	23.9	1.0
5/30/2021	Hispanic	67	34.8	1.2
	Non-Hispanic	189	28.3	1.0
5/23/2021	Hispanic	90	46.8	1.4
	Non-Hispanic	226	33.8	1.0
5/16/2021	Hispanic	110	57.1	1.3
	Non-Hispanic	290	43.4	1.0
5/9/2021	Hispanic	135	70.1	1.3
	Non-Hispanic	360	53.8	1.0
5/2/2021	Hispanic	125	64.9	1.0
	Non-Hispanic	427	63.9	1.0
4/25/2021	Hispanic	185	96.1	1.3
	Non-Hispanic	488	73.0	1.0
4/18/2021	Hispanic	176	91.4	1.3
	Non-Hispanic	462	69.1	1.0

## 7. Weekly pediatric case rates, by ethnicity

For weeks with case counts of 10 or greater, we can compare case rates by ethnicity to **measure the health inequity** experienced by youth who identify as Hispanic. The rate ratio is the weekly Hispanic case rate divided by the non-Hispanic case rate.

Week of Onset	Ethnicity	Case Count	Rate per 100K	Rate Ratio
4/11/2021	Hispanic	138	71.7	1.1
	Non-Hispanic	429	64.2	1.0
4/4/2021	Hispanic	139	72.2	1.5
	Non-Hispanic	328	49.1	1.0
3/28/2021	Hispanic	74	38.4	0.9
	Non-Hispanic	271	40.5	1.0
3/21/2021	Hispanic	61	31.7	1.2
	Non-Hispanic	181	27.1	1.0
3/14/2021	Hispanic	59	30.7	1.1
	Non-Hispanic	183	27.4	1.0
3/7/2021	Hispanic	71	36.9	1.5
	Non-Hispanic	167	25.0	1.0
2/28/2021	Hispanic	79	41.0	2.4
	Non-Hispanic	116	17.4	1.0
2/21/2021	Hispanic	102	53.0	2.4
	Non-Hispanic	145	21.7	1.0
2/14/2021	Hispanic	96	49.9	1.8
	Non-Hispanic	190	28.4	1.0
2/7/2021	Hispanic	80	41.6	1.4
	Non-Hispanic	198	29.6	1.0
1/31/2021	Hispanic	123	63.9	2.1
	Non-Hispanic	204	30.5	1.0
1/24/2021	Hispanic	109	56.6	1.7
	Non-Hispanic	227	34.0	1.0
1/17/2021	Hispanic	164	85.2	2.5
	Non-Hispanic	230	34.4	1.0
1/10/2021	Hispanic	169	87.8	2.2
	Non-Hispanic	269	40.2	1.0
1/3/2021	Hispanic	279	144.9	2.5
	Non-Hispanic	381	57.0	1.0
12/27/2020	Hispanic	272	141.3	2.4
	Non-Hispanic	390	58.3	1.0
12/20/2020	Hispanic	199	103.4	2.6
	Non-Hispanic	269	40.2	1.0
12/13/2020	Hispanic	273	141.8	3.2
	Non-Hispanic	298	44.6	1.0

## 7. Weekly pediatric case rates, by ethnicity

For weeks with case counts of 10 or greater, we can compare case rates by ethnicity to **measure the health inequity** experienced by youth who identify as Hispanic. The rate ratio is the weekly Hispanic case rate divided by the non-Hispanic case rate.

Week of Onset	Ethnicity	Case Count	Rate per 100K	Rate Ratio
12/6/2020	Hispanic	311	161.6	3.1
	Non-Hispanic	352	52.7	1.0
11/29/2020	Hispanic	355	184.4	3.2
	Non-Hispanic	380	56.8	1.0
11/22/2020	Hispanic	306	159.0	3.7
	Non-Hispanic	291	43.5	1.0
11/15/2020	Hispanic	337	175.1	3.6
	Non-Hispanic	326	48.8	1.0
11/8/2020	Hispanic	316	164.2	3.1
	Non-Hispanic	349	52.2	1.0
11/1/2020	Hispanic	293	152.2	3.3
	Non-Hispanic	305	45.6	1.0
10/25/2020	Hispanic	200	103.9	3.4
	Non-Hispanic	206	30.8	1.0
10/18/2020	Hispanic	226	117.4	6.1
	Non-Hispanic	128	19.1	1.0
10/11/2020	Hispanic	145	75.3	4.9
	Non-Hispanic	102	15.3	1.0
10/4/2020	Hispanic	137	71.2	4.0
	Non-Hispanic	119	17.8	1.0
9/27/2020	Hispanic	108	56.1	3.1
	Non-Hispanic	122	18.2	1.0
9/20/2020	Hispanic	107	55.6	4.0
	Non-Hispanic	93	13.9	1.0
9/13/2020	Hispanic	89	46.2	2.8
	Non-Hispanic	111	16.6	1.0
9/6/2020	Hispanic	71	36.9	4.2
	Non-Hispanic	58	8.7	1.0
8/30/2020	Hispanic	84	43.6	6.1
	Non-Hispanic	48	7.2	1.0
8/23/2020	Hispanic	93	48.3	5.9
	Non-Hispanic	55	8.2	1.0
8/16/2020	Hispanic	96	49.9	4.9
	Non-Hispanic	68	10.2	1.0
8/9/2020	Hispanic	127	66.0	5.5
	Non-Hispanic	80	12.0	1.0

## 7. Weekly pediatric case rates, by ethnicity

For weeks with case counts of 10 or greater, we can compare case rates by ethnicity to **measure the health inequity** experienced by youth who identify as Hispanic. The rate ratio is the weekly Hispanic case rate divided by the non-Hispanic case rate.

Week of Onset	Ethnicity	Case Count	Rate per 100K	Rate Ratio
8/2/2020	Hispanic	131	68.1	5.8
	Non-Hispanic	79	11.8	1.0
7/26/2020	Hispanic	163	84.7	6.7
	Non-Hispanic	84	12.6	1.0
7/19/2020	Hispanic	183	95.1	5.9
	Non-Hispanic	108	16.2	1.0
7/12/2020	Hispanic	151	78.4	5.1
	Non-Hispanic	103	15.4	1.0
7/5/2020	Hispanic	148	76.9	4.6
	Non-Hispanic	111	16.6	1.0
6/28/2020	Hispanic	143	74.3	5.6
	Non-Hispanic	88	13.2	1.0
6/21/2020	Hispanic	107	55.6	4.8
	Non-Hispanic	77	11.5	1.0
6/14/2020	Hispanic	75	39.0	3.0
	Non-Hispanic	87	13.0	1.0
6/7/2020	Hispanic	62	32.2	1.9
	Non-Hispanic	113	16.9	1.0
5/31/2020	Hispanic	35	18.2	4.3
	Non-Hispanic	28	4.2	1.0
5/24/2020	Hispanic	17	8.8	2.2
	Non-Hispanic	27	4.0	1.0

Updated monthly. Data current as of  
12:01am 2023-01-11

**Datestamp**

- Data current as of 12:01am 2023-01..

# 1. Weekly pediatric cases by symptom status

Week of On..	Symptoms	Response	(%)	Count
1/1/2023	Symptomatic	N	0.5%	1
		U	87.7%	164
		Y	11.8%	22
12/25/2022	Symptomatic	U	91.8%	224
		Y	8.2%	20
12/18/2022	Symptomatic	U	87.0%	168
		Y	13.0%	25
12/11/2022	Symptomatic	N	1.6%	5
		U	87.3%	281
		Y	11.2%	36
12/4/2022	Symptomatic	N	1.4%	5
		U	83.5%	309
		Y	15.1%	56
11/27/2022	Symptomatic	N	0.3%	1
		U	83.3%	314
		Y	16.4%	62
11/20/2022	Symptomatic	N	0.5%	2
		U	85.5%	312
		Y	14.0%	51
11/13/2022	Symptomatic	N	1.1%	4
		U	82.3%	297
		Y	16.6%	60
11/6/2022	Symptomatic	N	0.6%	2
		U	87.5%	315
		Y	11.9%	43
10/30/2022	Symptomatic	N	0.3%	1
		U	80.2%	231
		Y	19.4%	56
10/23/2022	Symptomatic	N	1.4%	4
		U	89.0%	250
		Y	9.6%	27
10/16/2022	Symptomatic	U	88.6%	210
		Y	11.4%	27
10/9/2022	Symptomatic	N	0.7%	2
		U	89.9%	258
		Y	9.4%	27
10/2/2022	Symptomatic	N	0.6%	2
		U	89.3%	291
		Y	10.1%	33
9/25/2022	Symptomatic	N	0.8%	3
		U	86.8%	328
		Y	12.4%	47
9/18/2022	Symptomatic	N	1.3%	8

# 1. Weekly pediatric cases by symptom status

Week of On..	Symptoms	Response	(%)	Count
9/18/2022	Symptomatic	U	79.6%	507
		Y	19.2%	122
9/11/2022	Symptomatic	N	0.8%	6
		U	78.3%	596
		Y	20.9%	159
9/4/2022	Symptomatic	N	0.7%	4
		U	78.3%	437
		Y	21.0%	117
8/28/2022	Symptomatic	N	0.9%	4
		U	82.4%	365
		Y	16.7%	74
8/21/2022	Symptomatic	N	1.0%	4
		U	89.1%	369
		Y	9.9%	41
8/14/2022	Symptomatic	N	1.0%	5
		U	90.8%	442
		Y	8.2%	40
8/7/2022	Symptomatic	N	1.3%	7
		U	91.0%	504
		Y	7.8%	43
7/31/2022	Symptomatic	N	2.7%	19
		U	88.5%	633
		Y	8.8%	63
7/24/2022	Symptomatic	N	1.8%	15
		U	88.2%	746
		Y	10.0%	85
7/17/2022	Symptomatic	N	0.5%	5
		U	89.0%	820
		Y	10.4%	96
7/10/2022	Symptomatic	N	0.2%	2
		U	87.9%	791
		Y	11.9%	107
7/3/2022	Symptomatic	N	0.8%	8
		U	89.9%	957
		Y	9.3%	99
6/26/2022	Symptomatic	N	0.7%	7
		U	89.8%	875
		Y	9.4%	92
6/19/2022	Symptomatic	N	1.2%	13
		U	92.4%	1,043
		Y	6.5%	73
6/12/2022	Symptomatic	N	1.0%	13
		U	89.1%	1,157

# 1. Weekly pediatric cases by symptom status

Week of On..	Symptoms	Response	(%)	Count
6/12/2022	Symptomatic	Y	9.9%	128
6/5/2022	Symptomatic	N	2.3%	30
		U	84.0%	1,115
		Y	13.8%	183
5/29/2022	Symptomatic	N	2.2%	36
		U	82.3%	1,330
		Y	15.5%	250
5/22/2022	Symptomatic	N	3.5%	56
		U	76.4%	1,210
		Y	20.0%	317
5/15/2022	Symptomatic	N	2.7%	59
		U	77.8%	1,678
		Y	19.5%	421
5/8/2022	Symptomatic	N	3.0%	58
		U	70.7%	1,388
		Y	26.3%	516
5/1/2022	Symptomatic	N	2.2%	36
		U	72.0%	1,167
		Y	25.8%	418
4/24/2022	Symptomatic	N	2.9%	41
		U	73.9%	1,048
		Y	23.2%	329
4/17/2022	Symptomatic	N	3.4%	38
		U	70.9%	800
		Y	25.7%	290
4/10/2022	Symptomatic	N	2.5%	19
		U	71.9%	553
		Y	25.6%	197
4/3/2022	Symptomatic	N	2.6%	13
		U	69.0%	350
		Y	28.4%	144
3/27/2022	Symptomatic	N	2.7%	9
		U	76.9%	257
		Y	20.4%	68
3/20/2022	Symptomatic	N	0.9%	2
		U	87.2%	197
		Y	11.9%	27
3/13/2022	Symptomatic	N	3.6%	8
		U	86.4%	190
		Y	10.0%	22
3/6/2022	Symptomatic	N	2.1%	6
		U	83.5%	237
		Y	14.4%	41



# 1. Weekly pediatric cases by symptom status

Week of On..	Symptoms	Response	(%)	Count
2/27/2022	Symptomatic	N	1.8%	8
		U	85.7%	377
		Y	12.5%	55
2/20/2022	Symptomatic	N	2.3%	18
		U	85.9%	670
		Y	11.8%	92
2/13/2022	Symptomatic	N	0.8%	9
		U	90.8%	1,062
		Y	8.4%	98
2/6/2022	Symptomatic	N	0.6%	16
		U	91.5%	2,385
		Y	7.9%	205
1/30/2022	Symptomatic	N	0.9%	40
		U	91.3%	3,929
		Y	7.8%	334
1/23/2022	Symptomatic	N	0.7%	53
		U	92.9%	7,233
		Y	6.4%	496
1/16/2022	Symptomatic	N	0.8%	100
		U	93.1%	11,440
		Y	6.1%	745
1/9/2022	Symptomatic	N	0.8%	100
		U	92.6%	12,092
		Y	6.7%	869
1/2/2022	Symptomatic	N	1.5%	175
		U	89.0%	10,355
		Y	9.5%	1,104
12/26/2021	Symptomatic	N	2.0%	94
		U	83.2%	3,993
		Y	14.9%	715
12/19/2021	Symptomatic	N	4.4%	61
		U	63.7%	892
		Y	32.0%	448
12/12/2021	Symptomatic	N	8.5%	83
		U	41.8%	408
		Y	49.7%	486
12/5/2021	Symptomatic	N	8.2%	83
		U	33.4%	338
		Y	58.4%	590
11/28/2021	Symptomatic	N	8.1%	94
		U	31.3%	362
		Y	60.5%	699
11/21/2021	Symptomatic	N	6.6%	65

# 1. Weekly pediatric cases by symptom status

Week of On..	Symptoms	Response	(%)	Count
11/21/2021	Symptomatic	U	39.2%	385
		Y	54.1%	531
11/14/2021	Symptomatic	N	9.7%	105
		U	35.2%	379
		Y	55.1%	594
11/7/2021	Symptomatic	N	9.1%	114
		U	35.2%	441
		Y	55.7%	699
10/31/2021	Symptomatic	N	8.4%	103
		U	34.1%	420
		Y	57.5%	707
10/24/2021	Symptomatic	N	12.0%	182
		U	34.8%	527
		Y	53.2%	805
10/17/2021	Symptomatic	N	7.5%	124
		U	38.2%	636
		Y	54.3%	903
10/10/2021	Symptomatic	N	9.5%	166
		U	35.3%	616
		Y	55.2%	964
10/3/2021	Symptomatic	N	8.0%	150
		U	38.4%	719
		Y	53.6%	1,004
9/26/2021	Symptomatic	N	8.1%	181
		U	41.2%	917
		Y	50.7%	1,129
9/19/2021	Symptomatic	N	7.4%	182
		U	43.1%	1,064
		Y	49.5%	1,220
9/12/2021	Symptomatic	N	6.7%	168
		U	43.3%	1,093
		Y	50.0%	1,263
9/5/2021	Symptomatic	N	7.6%	198
		U	49.2%	1,274
		Y	43.1%	1,117
8/29/2021	Symptomatic	N	5.7%	124
		U	52.5%	1,150
		Y	41.9%	918
8/22/2021	Symptomatic	N	5.1%	118
		U	55.8%	1,293
		Y	39.1%	906
8/15/2021	Symptomatic	N	5.9%	140
		U	57.6%	1,356

# 1. Weekly pediatric cases by symptom status

Week of On..	Symptoms	Response	(%)	Count
8/15/2021	Symptomatic	Y	36.4%	858
8/8/2021	Symptomatic	N	5.9%	110
		U	55.4%	1,029
		Y	38.7%	718
8/1/2021	Symptomatic	N	4.8%	72
		U	49.4%	736
		Y	45.8%	683
7/25/2021	Symptomatic	N	6.4%	71
		U	46.1%	514
		Y	47.6%	531
7/18/2021	Symptomatic	N	8.0%	50
		U	32.8%	206
		Y	59.2%	372
7/11/2021	Symptomatic	N	10.2%	36
		U	23.2%	82
		Y	66.6%	235
7/4/2021	Symptomatic	N	12.7%	31
		U	18.4%	45
		Y	68.9%	168
6/27/2021	Symptomatic	N	14.3%	28
		U	22.4%	44
		Y	63.3%	124
6/20/2021	Symptomatic	N	13.2%	27
		U	28.4%	58
		Y	58.3%	119
6/13/2021	Symptomatic	N	10.1%	27
		U	25.0%	67
		Y	64.9%	174
6/6/2021	Symptomatic	N	14.2%	38
		U	20.6%	55
		Y	65.2%	174
5/30/2021	Symptomatic	N	14.2%	45
		U	25.8%	82
		Y	60.1%	191
5/23/2021	Symptomatic	N	15.9%	64
		U	20.8%	84
		Y	63.3%	255
5/16/2021	Symptomatic	N	16.2%	88
		U	28.0%	152
		Y	55.8%	303
5/9/2021	Symptomatic	N	12.9%	87
		U	30.0%	202
		Y	57.1%	385

# 1. Weekly pediatric cases by symptom status

Week of On..	Symptoms	Response	(%)	Count
5/2/2021	Symptomatic	N	12.2%	96
		U	28.2%	222
		Y	59.6%	470
4/25/2021	Symptomatic	N	13.9%	132
		U	29.5%	280
		Y	56.5%	536
4/18/2021	Symptomatic	N	14.0%	128
		U	27.2%	248
		Y	58.8%	536
4/11/2021	Symptomatic	N	13.1%	102
		U	25.8%	201
		Y	61.2%	477
4/4/2021	Symptomatic	N	13.5%	81
		U	20.8%	125
		Y	65.7%	394
3/28/2021	Symptomatic	N	14.6%	65
		U	17.1%	76
		Y	68.3%	304
3/21/2021	Symptomatic	N	15.9%	48
		U	17.6%	53
		Y	66.4%	200
3/14/2021	Symptomatic	N	15.5%	48
		U	17.1%	53
		Y	67.4%	209
3/7/2021	Symptomatic	N	15.9%	47
		U	17.6%	52
		Y	66.6%	197
2/28/2021	Symptomatic	N	17.6%	43
		U	16.3%	40
		Y	66.1%	162
2/21/2021	Symptomatic	N	15.2%	44
		U	19.3%	56
		Y	65.5%	190
2/14/2021	Symptomatic	N	17.0%	62
		U	17.9%	65
		Y	65.1%	237
2/7/2021	Symptomatic	N	12.6%	45
		U	21.8%	78
		Y	65.5%	234
1/31/2021	Symptomatic	N	14.4%	59
		U	22.4%	92
		Y	63.2%	259
1/24/2021	Symptomatic	N	15.8%	68

# 1. Weekly pediatric cases by symptom status

Week of On..	Symptoms	Response	(%)	Count
1/24/2021	Symptomatic	U	19.5%	84
		Y	64.7%	279
1/17/2021	Symptomatic	N	15.0%	78
		U	20.9%	109
		Y	64.1%	334
1/10/2021	Symptomatic	N	17.6%	106
		U	27.6%	166
		Y	54.7%	329
1/3/2021	Symptomatic	N	14.7%	139
		U	33.2%	315
		Y	52.1%	494
12/27/2020	Symptomatic	N	10.8%	101
		U	30.1%	282
		Y	59.2%	555
12/20/2020	Symptomatic	N	14.0%	94
		U	32.5%	218
		Y	53.5%	359
12/13/2020	Symptomatic	N	13.0%	109
		U	35.7%	299
		Y	51.3%	430
12/6/2020	Symptomatic	N	14.9%	143
		U	34.7%	333
		Y	50.5%	485
11/29/2020	Symptomatic	N	13.7%	150
		U	35.4%	389
		Y	50.9%	559
11/22/2020	Symptomatic	N	11.3%	107
		U	42.5%	404
		Y	46.2%	439
11/15/2020	Symptomatic	N	11.6%	119
		U	43.0%	440
		Y	45.4%	464
11/8/2020	Symptomatic	N	12.9%	118
		U	37.3%	342
		Y	49.8%	457
11/1/2020	Symptomatic	N	10.8%	85
		U	31.6%	249
		Y	57.7%	455
10/25/2020	Symptomatic	N	14.5%	74
		U	22.7%	116
		Y	62.8%	321
10/18/2020	Symptomatic	N	18.4%	75
		U	11.8%	48

# 1. Weekly pediatric cases by symptom status

Week of On..	Symptoms	Response	(%)	Count
10/18/2020	Symptomatic	Y	69.8%	284
10/11/2020	Symptomatic	N	18.7%	52
		U	11.2%	31
		Y	70.1%	195
10/4/2020	Symptomatic	N	16.5%	48
		U	8.2%	24
		Y	75.3%	219
9/27/2020	Symptomatic	N	15.0%	41
		U	8.4%	23
		Y	76.6%	209
9/20/2020	Symptomatic	N	18.6%	41
		U	5.9%	13
		Y	75.6%	167
9/13/2020	Symptomatic	N	14.5%	33
		U	10.6%	24
		Y	74.9%	170
9/6/2020	Symptomatic	N	16.0%	23
		U	7.6%	11
		Y	76.4%	110
8/30/2020	Symptomatic	N	15.9%	24
		U	11.9%	18
		Y	72.2%	109
8/23/2020	Symptomatic	N	21.7%	35
		U	13.0%	21
		Y	65.2%	105
8/16/2020	Symptomatic	N	18.3%	34
		U	12.4%	23
		Y	69.4%	129
8/9/2020	Symptomatic	N	18.9%	46
		U	10.7%	26
		Y	70.4%	171
8/2/2020	Symptomatic	N	21.2%	48
		U	8.0%	18
		Y	70.8%	160
7/26/2020	Symptomatic	N	18.7%	50
		U	8.6%	23
		Y	72.7%	194
7/19/2020	Symptomatic	N	26.3%	84
		U	10.0%	32
		Y	63.8%	204
7/12/2020	Symptomatic	N	24.9%	70
		U	10.3%	29
		Y	64.8%	182

# 1. Weekly pediatric cases by symptom status

Week of On..	Symptoms	Response	(%)	Count
7/5/2020	Symptomatic	N	20.1%	56
		U	9.7%	27
		Y	70.3%	196
6/28/2020	Symptomatic	N	18.0%	46
		U	6.3%	16
		Y	75.7%	193
6/21/2020	Symptomatic	N	22.0%	44
		U	5.5%	11
		Y	72.5%	145
6/14/2020	Symptomatic	N	32.0%	55
		U	5.2%	9
		Y	62.8%	108
6/7/2020	Symptomatic	N	43.1%	81
		U	6.9%	13
		Y	50.0%	94
5/31/2020	Symptomatic	N	25.8%	17
		U	4.5%	3
		Y	69.7%	46
5/24/2020	Symptomatic	N	25.0%	11
		U	2.3%	1
		Y	72.7%	32
5/17/2020	Symptomatic	N	5.3%	1
		U	5.3%	1
		Y	89.5%	17
5/10/2020	Symptomatic	N	17.9%	5
		Y	82.1%	23
5/3/2020	Symptomatic	N	15.4%	4
		U	3.8%	1
		Y	80.8%	21
4/26/2020	Symptomatic	N	6.3%	1
		Y	93.8%	15
4/19/2020	Symptomatic	Y	100.0%	20
4/12/2020	Symptomatic	N	20.0%	1
		Y	80.0%	4
4/5/2020	Symptomatic	U	20.0%	1
		Y	80.0%	4
3/29/2020	Symptomatic	N	25.0%	2
		Y	75.0%	6
3/22/2020	Symptomatic	N	25.0%	1
		Y	75.0%	3
3/15/2020	Symptomatic	Y	100.0%	2
3/8/2020	Symptomatic	Y	100.0%	5
3/1/2020	Symptomatic	Y	100.0%	2

## 2. Pediatric cases by symptom

Symptoms	Response	% of Cases	Count
AbdominalPain	U	86.8%	134,231
	N	11.6%	17,884
	Y	1.7%	2,555
Aches	U	85.5%	132,226
	N	9.1%	14,106
	Y	5.4%	8,338
Chills	U	86.4%	133,706
	N	9.8%	15,234
	Y	3.7%	5,730
Cough	U	80.8%	124,932
	N	7.5%	11,563
	Y	11.8%	18,175
Diarrhea	U	86.3%	133,444
	N	11.6%	18,006
	Y	2.1%	3,220
Fever	U	81.5%	126,130
	N	9.3%	14,350
	Y	9.2%	14,190
Headache	U	84.7%	131,058
	N	7.3%	11,277
	Y	8.0%	12,335
LossOfSmell	U	84.1%	130,041
	N	11.6%	17,995
	Y	4.3%	6,634
Nausea	U	86.4%	133,704
	N	11.2%	17,284
	Y	2.4%	3,682
RunnyNose	U	83.9%	129,792
	N	7.2%	11,082
	Y	8.9%	13,796
ShortnessOfBreath	U	84.0%	129,886
	N	14.1%	21,807
	Y	1.9%	2,977
SoreThroat	U	84.6%	130,781
	N	8.2%	12,733
	Y	7.2%	11,156
Vomit	U	86.3%	133,433
	N	12.2%	18,797
	Y	1.6%	2,440



### 3. Proportion of pediatric cases ever hospitalized

Ever hospitalized	% of Cases	Case Count
Yes	0.7%	1,058
Unknown	67.6%	104,524
No	31.7%	49,088

## 4. Weekly pediatric cases ever hospitalized, by age group

Week of Onset	Age Group	Case Count	Case Rate pe..
1/1/2023	0-4	5	2.3
12/25/2022	0-4	4	1.8
	12-17	2	0.7
12/18/2022	0-4	4	1.8
	12-17	1	0.3
12/11/2022	0-4	4	1.8
	5-11	2	0.6
	12-17	3	1.0
12/4/2022	0-4	9	4.1
	12-17	2	0.7
11/27/2022	0-4	7	3.2
	5-11	1	0.3
11/20/2022	0-4	3	1.4
	12-17	3	1.0
11/13/2022	0-4	1	0.5
	5-11	2	0.6
	12-17	2	0.7
11/6/2022	0-4	1	0.5
	12-17	3	1.0
10/30/2022	0-4	3	1.4
	5-11	1	0.3
10/23/2022	0-4	1	0.5
	12-17	1	0.3
10/16/2022	0-4	1	0.5
	5-11	3	0.9
	12-17	1	0.3
10/9/2022	0-4	3	1.4
	5-11	2	0.6
	12-17	1	0.3
10/2/2022	0-4	5	2.3
9/25/2022	0-4	7	3.2
	12-17	1	0.3
9/18/2022	0-4	4	1.8
	5-11	3	0.9
	12-17	2	0.7
9/11/2022	0-4	2	0.9
	5-11	3	0.9
	12-17	1	0.3
9/4/2022	0-4	5	2.3
	5-11	2	0.6

## 4. Weekly pediatric cases ever hospitalized, by age group

Week of Onset	Age Group	Case Count	Case Rate pe..
9/4/2022	12-17	1	0.3
8/28/2022	0-4	1	0.5
	5-11	2	0.6
8/21/2022	5-11	1	0.3
	12-17	3	1.0
8/14/2022	0-4	7	3.2
	12-17	4	1.4
8/7/2022	0-4	4	1.8
	5-11	1	0.3
7/31/2022	0-4	5	2.3
	5-11	2	0.6
7/24/2022	0-4	4	1.8
	12-17	2	0.7
7/17/2022	0-4	3	1.4
	12-17	5	1.7
7/10/2022	0-4	3	1.4
	5-11	1	0.3
	12-17	1	0.3
7/3/2022	0-4	6	2.7
	5-11	1	0.3
	12-17	1	0.3
6/26/2022	0-4	7	3.2
	5-11	2	0.6
6/19/2022	0-4	9	4.1
	5-11	5	1.5
	12-17	1	0.3
6/12/2022	0-4	6	2.7
	5-11	1	0.3
	12-17	2	0.7
6/5/2022	0-4	4	1.8
	5-11	1	0.3
	12-17	3	1.0
5/29/2022	0-4	2	0.9
	5-11	1	0.3
	12-17	4	1.4
5/22/2022	0-4	4	1.8
	12-17	1	0.3
5/15/2022	0-4	2	0.9
	5-11	4	1.2
	12-17	2	0.7

## 4. Weekly pediatric cases ever hospitalized, by age group

Week of Onset	Age Group	Case Count	Case Rate pe..
5/8/2022	0-4	10	4.5
	5-11	2	0.6
	12-17	3	1.0
5/1/2022	0-4	2	0.9
	5-11	2	0.6
	12-17	1	0.3
4/24/2022	0-4	5	2.3
	5-11	1	0.3
	12-17	2	0.7
4/17/2022	0-4	3	1.4
	12-17	1	0.3
4/10/2022	5-11	3	0.9
	12-17	4	1.4
4/3/2022	0-4	3	1.4
	5-11	1	0.3
3/27/2022	0-4	2	0.9
	5-11	1	0.3
3/20/2022	0-4	2	0.9
3/13/2022	0-4	4	1.8
	12-17	2	0.7
3/6/2022	0-4	3	1.4
	5-11	2	0.6
	12-17	3	1.0
2/27/2022	0-4	9	4.1
	5-11	2	0.6
	12-17	1	0.3
2/20/2022	0-4	6	2.7
	12-17	5	1.7
2/13/2022	0-4	4	1.8
	5-11	2	0.6
	12-17	4	1.4
2/6/2022	0-4	10	4.5
	5-11	2	0.6
	12-17	2	0.7
1/30/2022	0-4	10	4.5
	5-11	4	1.2
	12-17	8	2.7
1/23/2022	0-4	15	6.8
	5-11	7	2.0
	12-17	9	3.0

## 4. Weekly pediatric cases ever hospitalized, by age group

Week of Onset	Age Group	Case Count	Case Rate pe..
1/16/2022	0-4	19	8.6
	5-11	8	2.3
	12-17	11	3.7
1/9/2022	0-4	25	11.3
	5-11	6	1.8
	12-17	8	2.7
1/2/2022	0-4	15	6.8
	5-11	7	2.0
	12-17	14	4.7
12/26/2021	0-4	9	4.1
	5-11	2	0.6
	12-17	8	2.7
12/19/2021	0-4	3	1.4
	12-17	4	1.4
12/12/2021	0-4	2	0.9
	12-17	5	1.7
12/5/2021	0-4	4	1.8
	5-11	2	0.6
	12-17	2	0.7
11/28/2021	0-4	5	2.3
	5-11	1	0.3
	12-17	3	1.0
11/21/2021	0-4	3	1.4
	12-17	4	1.4
11/14/2021	0-4	3	1.4
	12-17	2	0.7
11/7/2021	0-4	1	0.5
10/31/2021	0-4	4	1.8
	5-11	1	0.3
	12-17	3	1.0
10/24/2021	0-4	3	1.4
	5-11	2	0.6
	12-17	5	1.7
10/17/2021	0-4	8	3.6
	5-11	4	1.2
	12-17	3	1.0
10/10/2021	5-11	1	0.3
	12-17	6	2.0
10/3/2021	0-4	5	2.3
	5-11	2	0.6

## 4. Weekly pediatric cases ever hospitalized, by age group

Week of Onset	Age Group	Case Count	Case Rate pe..
10/3/2021	12-17	6	2.0
9/26/2021	0-4	9	4.1
	5-11	4	1.2
	12-17	6	2.0
9/19/2021	12-17	5	1.7
9/12/2021	0-4	2	0.9
	5-11	5	1.5
	12-17	3	1.0
9/5/2021	0-4	10	4.5
	5-11	3	0.9
	12-17	2	0.7
8/29/2021	0-4	4	1.8
	5-11	2	0.6
	12-17	6	2.0
8/22/2021	0-4	7	3.2
	5-11	4	1.2
	12-17	3	1.0
8/15/2021	0-4	7	3.2
	5-11	2	0.6
	12-17	5	1.7
8/8/2021	0-4	8	3.6
	5-11	3	0.9
	12-17	6	2.0
8/1/2021	0-4	3	1.4
	5-11	5	1.5
	12-17	6	2.0
7/25/2021	0-4	3	1.4
	5-11	2	0.6
	12-17	5	1.7
7/18/2021	0-4	1	0.5
	5-11	1	0.3
7/11/2021	0-4	1	0.5
	12-17	1	0.3
7/4/2021	5-11	2	0.6
	12-17	1	0.3
6/27/2021	0-4	3	1.4
6/20/2021	0-4	2	0.9
	5-11	3	0.9
	12-17	2	0.7
6/13/2021	12-17	3	1.0

## 4. Weekly pediatric cases ever hospitalized, by age group

Week of Onset	Age Group	Case Count	Case Rate pe..
6/6/2021	12-17	1	0.3
5/30/2021	0-4	1	0.5
	5-11	1	0.3
	12-17	2	0.7
5/23/2021	12-17	2	0.7
5/16/2021	0-4	2	0.9
	5-11	3	0.9
	12-17	5	1.7
5/2/2021	0-4	1	0.5
	5-11	5	1.5
	12-17	4	1.4
4/25/2021	5-11	1	0.3
	12-17	2	0.7
4/18/2021	0-4	2	0.9
	5-11	1	0.3
	12-17	6	2.0
4/11/2021	0-4	1	0.5
	12-17	5	1.7
4/4/2021	0-4	1	0.5
	5-11	1	0.3
	12-17	2	0.7
3/28/2021	0-4	1	0.5
	5-11	1	0.3
	12-17	3	1.0
3/21/2021	0-4	3	1.4
	5-11	1	0.3
	12-17	1	0.3
3/14/2021	5-11	2	0.6
	12-17	3	1.0
3/7/2021	0-4	2	0.9
2/28/2021	12-17	1	0.3
2/21/2021	0-4	1	0.5
	5-11	1	0.3
2/14/2021	0-4	2	0.9
	5-11	3	0.9
	12-17	3	1.0
2/7/2021	0-4	3	1.4
	5-11	2	0.6
	12-17	3	1.0
1/31/2021	0-4	3	1.4

## 4. Weekly pediatric cases ever hospitalized, by age group

Week of Onset	Age Group	Case Count	Case Rate pe..
1/31/2021	5-11	1	0.3
	12-17	6	2.0
1/24/2021	0-4	1	0.5
	5-11	1	0.3
	12-17	4	1.4
1/17/2021	0-4	4	1.8
	5-11	1	0.3
	12-17	3	1.0
1/10/2021	0-4	6	2.7
	5-11	1	0.3
	12-17	2	0.7
1/3/2021	0-4	3	1.4
	5-11	5	1.5
	12-17	4	1.4
12/27/2020	0-4	1	0.5
	12-17	5	1.7
12/20/2020	5-11	1	0.3
	12-17	2	0.7
12/13/2020	0-4	2	0.9
	5-11	1	0.3
	12-17	6	2.0
12/6/2020	0-4	2	0.9
	5-11	3	0.9
	12-17	6	2.0
11/29/2020	0-4	8	3.6
	5-11	2	0.6
	12-17	1	0.3
11/22/2020	0-4	4	1.8
	5-11	1	0.3
	12-17	5	1.7
11/15/2020	0-4	2	0.9
	5-11	1	0.3
	12-17	3	1.0
11/8/2020	0-4	5	2.3
	5-11	2	0.6
	12-17	6	2.0
11/1/2020	0-4	1	0.5
	12-17	7	2.4
10/25/2020	0-4	2	0.9
	5-11	3	0.9



## 4. Weekly pediatric cases ever hospitalized, by age group

Week of Onset	Age Group	Case Count	Case Rate pe..
10/25/2020	12-17	1	0.3
10/18/2020	0-4	1	0.5
	5-11	1	0.3
	12-17	2	0.7
10/11/2020	0-4	3	1.4
10/4/2020	0-4	2	0.9
	12-17	5	1.7
9/27/2020	0-4	3	1.4
	5-11	1	0.3
	12-17	1	0.3
9/20/2020	0-4	1	0.5
	12-17	1	0.3
9/13/2020	0-4	2	0.9
	5-11	1	0.3
	12-17	3	1.0
9/6/2020	0-4	1	0.5
	5-11	1	0.3
	12-17	1	0.3
8/30/2020	0-4	1	0.5
8/23/2020	5-11	1	0.3
8/16/2020	0-4	2	0.9
	12-17	1	0.3
8/9/2020	0-4	2	0.9
	12-17	2	0.7
8/2/2020	0-4	1	0.5
	5-11	1	0.3
7/26/2020	5-11	1	0.3
	12-17	2	0.7
7/19/2020	0-4	3	1.4
	12-17	1	0.3
7/12/2020	0-4	2	0.9
	5-11	2	0.6
	12-17	5	1.7
7/5/2020	0-4	2	0.9
	5-11	2	0.6
6/21/2020	0-4	3	1.4
	12-17	1	0.3
6/14/2020	0-4	1	0.5
	5-11	1	0.3
5/24/2020	5-11	1	0.3

#### 4. Weekly pediatric cases ever hospitalized, by age group

Week of Onset	Age Group	Case Count	Case Rate pe..
5/17/2020	0-4	1	0.5
5/3/2020	5-11	1	0.3
4/19/2020	0-4	1	0.5
3/29/2020	0-4	1	0.5
	5-11	1	0.3
3/22/2020	0-4	1	0.5

Updated monthly. Data current as of  
12:01am 2023-01-11

**Datestamp**

- Data current as of 12:01am 2023-01..

# 1. Total pediatric cases by county

County	Case Count	Case Rate pe..
Grant	405	31,965.3
Jefferson	1,695	29,825.8
Deschutes	10,368	25,150.4
Benton	3,543	24,004.1
Crook	1,148	23,295.5
Sherman	79	21,763.1
Wasco	1,192	21,153.5
Curry	689	20,916.8
Umatilla	4,057	20,325.7
Linn	5,790	20,277.4
Wheeler	46	20,264.3
Malheur	1,521	19,952.8
Columbia	2,059	19,373.4
Lincoln	1,548	19,268.1
Coos	2,244	19,029.9
Morrow	651	18,875.0
Harney	296	18,616.4
Polk	3,690	18,364.6
Washington	24,149	18,306.1
Josephine	2,892	18,025.4
Jackson	8,102	18,013.3
Marion	14,407	17,418.5
Baker	573	17,390.0
Gilliam	70	17,369.7
Multnomah	25,425	17,272.4
Lane	11,592	16,982.9
Tillamook	831	16,798.1
Union	949	16,470.0
Yamhill	3,750	16,369.1
Hood River	892	16,197.6
Wallowa	215	15,291.6
Clackamas	13,619	14,983.2
Klamath	2,232	14,875.0
Douglas	2,878	13,524.4
Clatsop	907	11,599.9
Lake	165	10,370.8
Unknown	1	

## 2. Weekly pediatric cases by county

County	Week of Onset	Case Count	Case Rate pe..
Baker	11/6/2022	0	0.0
	11/13/2022	1	30.3
	11/20/2022	0	0.0
	11/27/2022	0	0.0
	12/4/2022	0	0.0
	12/11/2022	0	0.0
	12/18/2022	0	0.0
	12/25/2022	0	0.0
	1/1/2023	0	0.0
Benton	11/6/2022	7	47.4
	11/13/2022	17	115.2
	11/20/2022	9	61.0
	11/27/2022	9	61.0
	12/4/2022	11	74.5
	12/11/2022	5	33.9
	12/18/2022	1	6.8
	12/25/2022	6	40.7
	1/1/2023	0	0.0
Clackamas	11/6/2022	30	33.0
	11/13/2022	27	29.7
	11/20/2022	32	35.2
	11/27/2022	22	24.2
	12/4/2022	35	38.5
	12/11/2022	33	36.3
	12/18/2022	14	15.4
	12/25/2022	21	23.1
	1/1/2023	11	12.1
Clatsop	11/6/2022	3	38.4
	11/13/2022	0	0.0
	11/20/2022	1	12.8
	11/27/2022	1	12.8
	12/4/2022	1	12.8
	12/11/2022	1	12.8
	12/18/2022	0	0.0
	12/25/2022	0	0.0
	1/1/2023	0	0.0
Columbia	11/6/2022	6	56.5
	11/13/2022	3	28.2
	11/20/2022	2	18.8
	11/27/2022	7	65.9
	12/4/2022	6	56.5
	12/11/2022	0	0.0

## 2. Weekly pediatric cases by county

County	Week of Onset	Case Count	Case Rate pe..
Columbia	12/18/2022	2	18.8
	12/25/2022	5	47.0
	1/1/2023	2	18.8
Coos	11/6/2022	9	76.3
	11/13/2022	4	33.9
	11/20/2022	4	33.9
	11/27/2022	5	42.4
	12/4/2022	5	42.4
	12/11/2022	5	42.4
	12/18/2022	4	33.9
	12/25/2022	3	25.4
	1/1/2023	5	42.4
	Crook	11/6/2022	7
11/13/2022		4	81.2
11/20/2022		4	81.2
11/27/2022		6	121.8
12/4/2022		2	40.6
12/11/2022		2	40.6
12/18/2022		1	20.3
12/25/2022		2	40.6
1/1/2023		1	20.3
Curry		11/6/2022	2
	11/13/2022	1	30.4
	11/20/2022	0	0.0
	11/27/2022	0	0.0
	12/4/2022	1	30.4
	12/11/2022	0	0.0
	12/18/2022	2	60.7
	12/25/2022	0	0.0
	1/1/2023	2	60.7
	Deschutes	11/6/2022	15
11/13/2022		15	36.4
11/20/2022		20	48.5
11/27/2022		13	31.5
12/4/2022		8	19.4
12/11/2022		22	53.4
12/18/2022		13	31.5
12/25/2022		14	34.0
1/1/2023		17	41.2
Douglas		11/6/2022	3
	11/13/2022	16	75.2
	11/20/2022	9	42.3

## 2. Weekly pediatric cases by county

County	Week of Onset	Case Count	Case Rate pe..
Douglas	11/27/2022	12	56.4
	12/4/2022	5	23.5
	12/11/2022	4	18.8
	12/18/2022	6	28.2
	12/25/2022	8	37.6
	1/1/2023	4	18.8
Gilliam	11/6/2022	0	0.0
	11/13/2022	0	0.0
	11/20/2022	0	0.0
	11/27/2022	0	0.0
	12/4/2022	0	0.0
	12/11/2022	0	0.0
	12/18/2022	0	0.0
	12/25/2022	0	0.0
	1/1/2023	0	0.0
Grant	11/6/2022	0	0.0
	11/13/2022	0	0.0
	11/20/2022	0	0.0
	11/27/2022	0	0.0
	12/4/2022	2	157.9
	12/11/2022	0	0.0
	12/18/2022	0	0.0
	12/25/2022	1	78.9
	1/1/2023	0	0.0
Harney	11/6/2022	0	0.0
	11/13/2022	1	62.9
	11/20/2022	0	0.0
	11/27/2022	2	125.8
	12/4/2022	0	0.0
	12/11/2022	0	0.0
	12/18/2022	1	62.9
	12/25/2022	0	0.0
	1/1/2023	0	0.0
Hood River	11/6/2022	1	18.2
	11/13/2022	3	54.5
	11/20/2022	1	18.2
	11/27/2022	2	36.3
	12/4/2022	4	72.6
	12/11/2022	1	18.2
	12/18/2022	0	0.0
	12/25/2022	2	36.3
	1/1/2023	0	0.0

## 2. Weekly pediatric cases by county

County	Week of Onset	Case Count	Case Rate pe..
Jackson	11/6/2022	16	35.6
	11/13/2022	15	33.3
	11/20/2022	18	40.0
	11/27/2022	16	35.6
	12/4/2022	22	48.9
	12/11/2022	14	31.1
	12/18/2022	12	26.7
	12/25/2022	16	35.6
	1/1/2023	6	13.3
Jefferson	11/6/2022	4	70.4
	11/13/2022	4	70.4
	11/20/2022	8	140.8
	11/27/2022	7	123.2
	12/4/2022	4	70.4
	12/11/2022	6	105.6
	12/18/2022	4	70.4
	12/25/2022	7	123.2
	1/1/2023	0	0.0
Josephine	11/6/2022	19	118.4
	11/13/2022	20	124.7
	11/20/2022	12	74.8
	11/27/2022	13	81.0
	12/4/2022	15	93.5
	12/11/2022	6	37.4
	12/18/2022	6	37.4
	12/25/2022	4	24.9
	1/1/2023	5	31.2
Klamath	11/6/2022	5	33.3
	11/13/2022	5	33.3
	11/20/2022	2	13.3
	11/27/2022	3	20.0
	12/4/2022	6	40.0
	12/11/2022	5	33.3
	12/18/2022	4	26.7
	12/25/2022	2	13.3
	1/1/2023	2	13.3
Lake	11/6/2022	0	0.0
	11/13/2022	0	0.0
	11/20/2022	0	0.0
	11/27/2022	0	0.0
	12/4/2022	0	0.0
	12/11/2022	0	0.0



## 2. Weekly pediatric cases by county

County	Week of Onset	Case Count	Case Rate pe..
Lake	12/18/2022	0	0.0
	12/25/2022	0	0.0
	1/1/2023	0	0.0
Lane	11/6/2022	37	54.2
	11/13/2022	38	55.7
	11/20/2022	30	44.0
	11/27/2022	32	46.9
	12/4/2022	26	38.1
	12/11/2022	33	48.3
	12/18/2022	25	36.6
	12/25/2022	17	24.9
	1/1/2023	11	16.1
Lincoln	11/6/2022	2	24.9
	11/13/2022	3	37.3
	11/20/2022	1	12.4
	11/27/2022	4	49.8
	12/4/2022	4	49.8
	12/11/2022	2	24.9
	12/18/2022	0	0.0
	12/25/2022	4	49.8
	1/1/2023	5	62.2
Linn	11/6/2022	15	52.5
	11/13/2022	17	59.5
	11/20/2022	26	91.1
	11/27/2022	13	45.5
	12/4/2022	26	91.1
	12/11/2022	25	87.6
	12/18/2022	8	28.0
	12/25/2022	7	24.5
	1/1/2023	16	56.0
Malheur	11/6/2022	1	13.1
	11/13/2022	3	39.4
	11/20/2022	1	13.1
	11/27/2022	2	26.2
	12/4/2022	3	39.4
	12/11/2022	1	13.1
	12/18/2022	1	13.1
	12/25/2022	2	26.2
	1/1/2023	0	0.0
Marion	11/6/2022	24	29.0
	11/13/2022	32	38.7
	11/20/2022	41	49.6

## 2. Weekly pediatric cases by county

County	Week of Onset	Case Count	Case Rate pe..
Marion	11/27/2022	33	39.9
	12/4/2022	27	32.6
	12/11/2022	20	24.2
	12/18/2022	15	18.1
	12/25/2022	33	39.9
	1/1/2023	22	26.6
Morrow	11/6/2022	1	29.0
	11/13/2022	0	0.0
	11/20/2022	2	58.0
	11/27/2022	1	29.0
	12/4/2022	0	0.0
	12/11/2022	1	29.0
	12/18/2022	0	0.0
	12/25/2022	0	0.0
	1/1/2023	2	58.0
Multnomah	11/6/2022	83	56.4
	11/13/2022	58	39.4
	11/20/2022	70	47.6
	11/27/2022	76	51.6
	12/4/2022	65	44.2
	12/11/2022	51	34.6
	12/18/2022	36	24.5
	12/25/2022	29	19.7
	1/1/2023	31	21.1
Polk	11/6/2022	3	14.9
	11/13/2022	7	34.8
	11/20/2022	9	44.8
	11/27/2022	10	49.8
	12/4/2022	6	29.9
	12/11/2022	8	39.8
	12/18/2022	3	14.9
	12/25/2022	8	39.8
	1/1/2023	2	10.0
Sherman	11/6/2022	1	275.5
	11/13/2022	0	0.0
	11/20/2022	0	0.0
	11/27/2022	0	0.0
	12/4/2022	0	0.0
	12/11/2022	0	0.0
	12/18/2022	0	0.0
	12/25/2022	0	0.0
	1/1/2023	0	0.0

## 2. Weekly pediatric cases by county

County	Week of Onset	Case Count	Case Rate pe..
Tillamook	11/6/2022	3	60.6
	11/13/2022	1	20.2
	11/20/2022	0	0.0
	11/27/2022	0	0.0
	12/4/2022	7	141.5
	12/11/2022	0	0.0
	12/18/2022	1	20.2
	12/25/2022	4	80.9
	1/1/2023	0	0.0
Umatilla	11/6/2022	6	30.1
	11/13/2022	5	25.1
	11/20/2022	7	35.1
	11/27/2022	18	90.2
	12/4/2022	10	50.1
	12/11/2022	3	15.0
	12/18/2022	8	40.1
	12/25/2022	7	35.1
	1/1/2023	3	15.0
Union	11/6/2022	1	17.4
	11/13/2022	2	34.7
	11/20/2022	2	34.7
	11/27/2022	3	52.1
	12/4/2022	6	104.1
	12/11/2022	0	0.0
	12/18/2022	0	0.0
	12/25/2022	1	17.4
	1/1/2023	0	0.0
Wallowa	11/6/2022	0	0.0
	11/13/2022	0	0.0
	11/20/2022	0	0.0
	11/27/2022	0	0.0
	12/4/2022	1	71.1
	12/11/2022	0	0.0
	12/18/2022	0	0.0
	12/25/2022	0	0.0
	1/1/2023	0	0.0
Wasco	11/6/2022	2	35.5
	11/13/2022	0	0.0
	11/20/2022	1	17.7
	11/27/2022	1	17.7
	12/4/2022	0	0.0
	12/11/2022	0	0.0

## 2. Weekly pediatric cases by county

County	Week of Onset	Case Count	Case Rate pe..
Wasco	12/18/2022	0	0.0
	12/25/2022	2	35.5
	1/1/2023	0	0.0
Washington	11/6/2022	46	34.9
	11/13/2022	48	36.4
	11/20/2022	46	34.9
	11/27/2022	51	38.7
	12/4/2022	45	34.1
	12/11/2022	59	44.7
	12/18/2022	23	17.4
	12/25/2022	31	23.5
	1/1/2023	35	26.5
	Wheeler	11/6/2022	0
11/13/2022		0	0.0
11/20/2022		0	0.0
11/27/2022		0	0.0
12/4/2022		0	0.0
12/11/2022		0	0.0
12/18/2022		0	0.0
12/25/2022		0	0.0
1/1/2023		0	0.0
Yamhill		11/6/2022	8
	11/13/2022	11	48.0
	11/20/2022	7	30.6
	11/27/2022	15	65.5
	12/4/2022	17	74.2
	12/11/2022	15	65.5
	12/18/2022	3	13.1
	12/25/2022	8	34.9
	1/1/2023	5	21.8