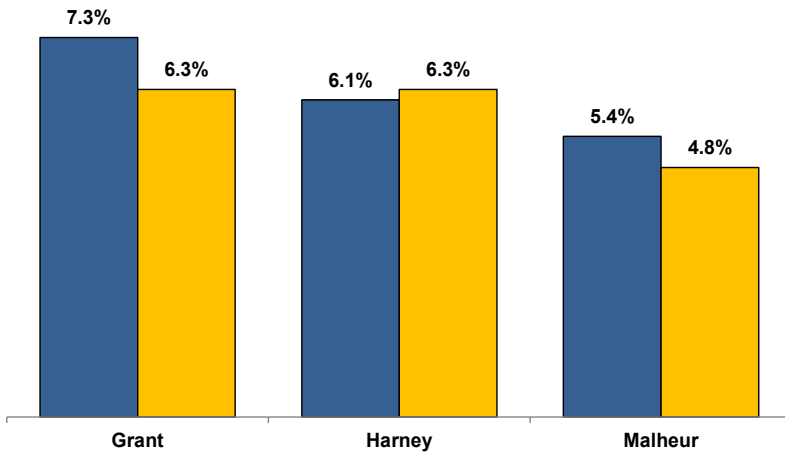


Unemployment Rates (Seasonally Adjusted)

■ October 2016 ■ October 2017



Unemployment Rate News

Malheur County's seasonally adjusted unemployment rate for October 2017 was 4.8 percent while Harney County and Grant County both came in at 6.3 percent. All three were above Oregon's statewide rate of 4.3 percent and the national rate of 4.1 percent.

Malheur and Grant counties had lower seasonally adjusted unemployment rates in October 2017 than the previous October. Harney County was one of only two counties in Oregon with a higher rate. The October 2017 rates for Malheur and Grant counties are the lowest October rates since comparable statistics began in 1990.

Grant County (-1.0 percentage point) ranked in a tie for second among Oregon's 36 counties for over-the-year improvement. Malheur County (-0.6) sat in a six-way tie for eighth while Harney County (+0.2) found itself in 35th.

Nonfarm Employment Change

October 2016 to October 2017

Grant County gained an estimated 110 jobs over the year. The private sector added 80 jobs led by gains in leisure and hospitality. The public sector added 30 jobs with gains in federal, state, and local government.

Harney County employment increased by an estimated 50 jobs over the year. The private sector saw no net change with gains led by goods-producing and leisure and hospitality offsetting losses led by education and health services. The public sector added 50 jobs in local government.

Malheur County added an estimated 10 jobs over the year. The private sector increased by 50 jobs led by gains in manufacturing and mining, logging, and construction. The public sector decreased by 40 jobs with losses in local and federal government.

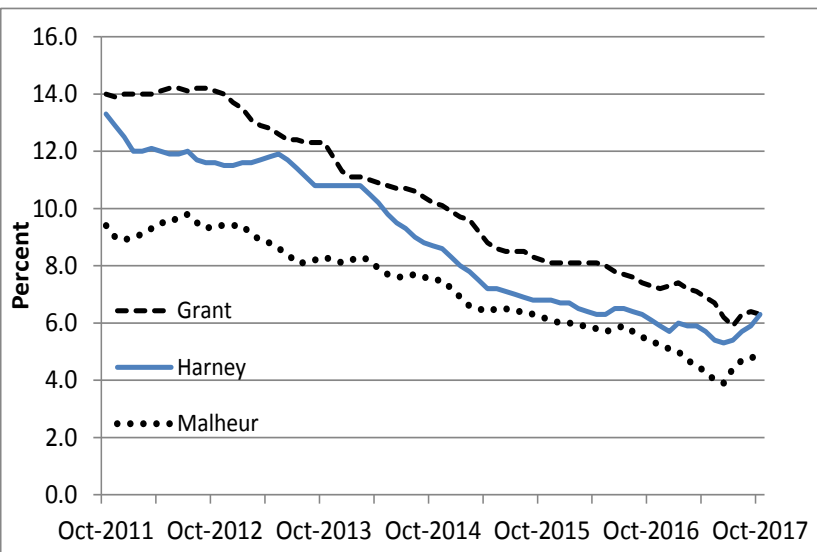
Notable Industry Gains and Losses

Over-the-Year Employment Change from October 2016



<u>Grant</u>	<u>Harney</u>	<u>Malheur</u>
Leisure/Hospitality (+70)	Local Government (+50)	Manufacturing (+90)
Mining/Logging (+20)	Goods-Producing (+20)	Mining/Logging/Construction (+40)
Wholesale Trade (+10)	Leisure/Hospitality (+20)	Professional/Business Services (+20)
State Government (+10)	Wholesale Trade (+10)	Financial Activities (+10)
Construction (-10)	Private Education/Health Services (-40)	Wholesale Trade (-60)
Retail Trade (-10)	Transportation/Warehousing/Utilities (-10)	Private Education/Health Services (-40)
		Retail Trade (-30)

Unemployment rate on downward trend but ticking up



Want to learn more about the Oregon economy?

Read our blog at: oregonemployment.blogspot.com/

Follow us on Twitter at: [Twitter.com/OREmployment](https://twitter.com/OREmployment)

Visit our web site at: QualityInfo.org

Visit our subscription service at: qualityinfo.org/p-sofrm

For more economic or labor market data about Grant, Harney or Malheur counties, contact:

Tony Wendel, Workforce Analyst

Desk: 541-276-9050 ext. 232 Cell: 541-667-7027

E-mail: Tony.A.Wendel@oregon.gov

Chris Rich, Regional Economist

Desk: 541-963-7111 ext. 226 Cell: 541-519-0315

E-mail: Christopher.M.Rich@oregon.gov

Want to be added to the monthly distribution list?

E-mail me at: Tony.A.Wendel@oregon.gov