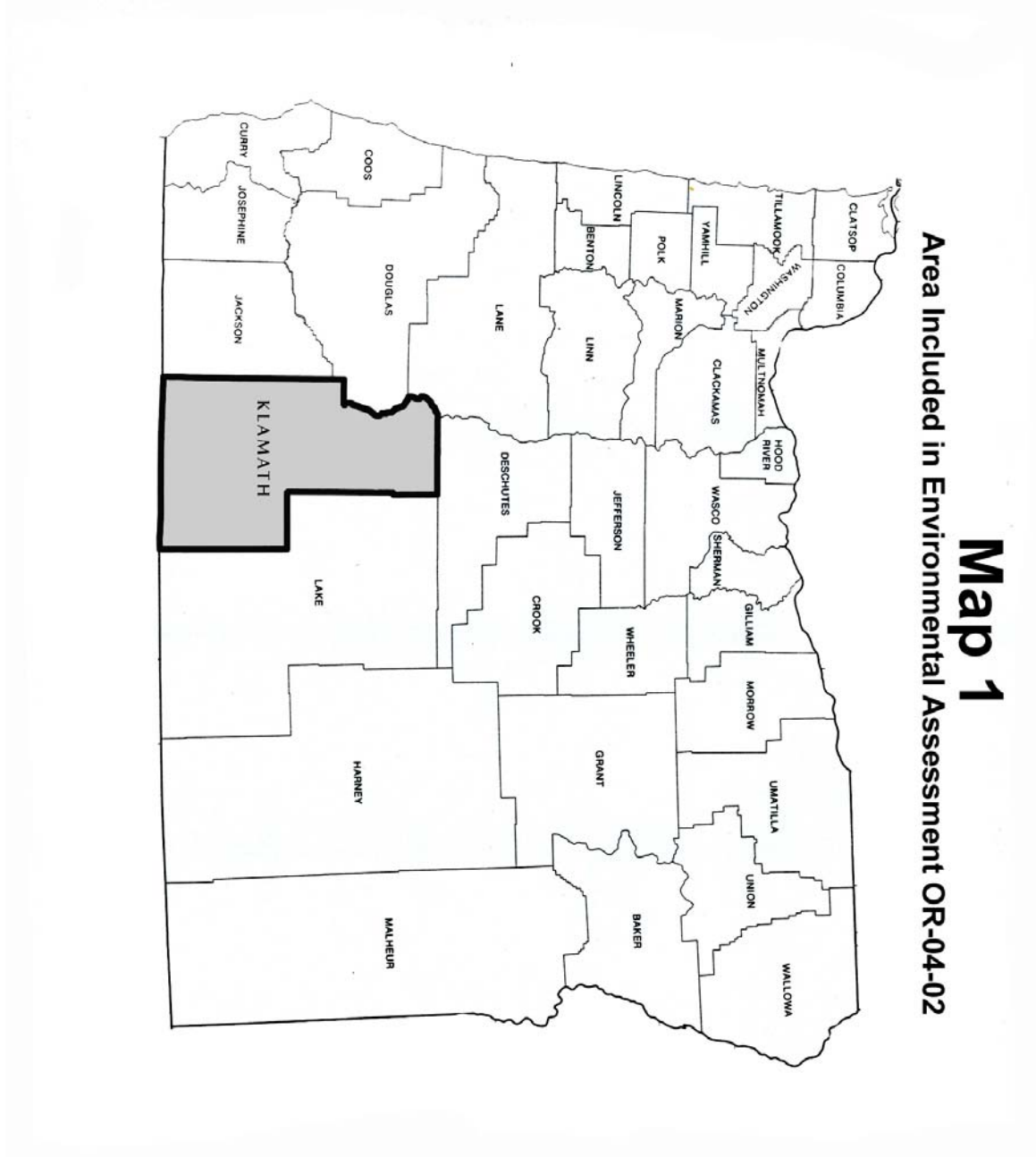


**APPENDIX 2:** Maps of Affected Environment

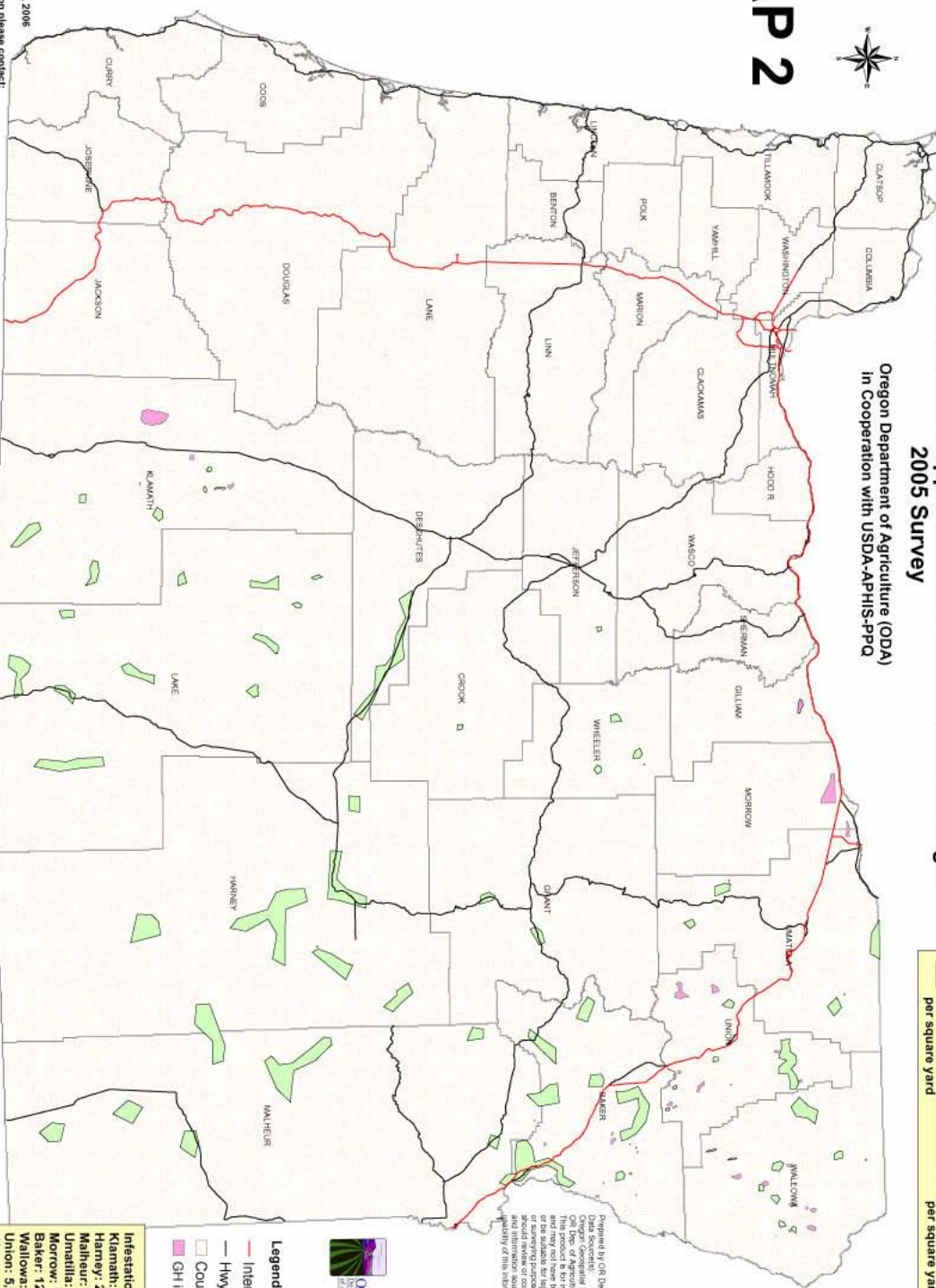


# MAP 2



## Infestations of Adult Grasshoppers and Mormon Crickets in Oregon 2005 Survey

Oregon Department of Agriculture (ODA)  
In Cooperation with USDA-APHIS-PPQ



**Economic infestations:**  
8 and more grasshoppers per square yard

**Non-economic infestations:**  
Less than 8 grasshoppers per square yard

**Infestation per County**

Klamath:	22,384.54 A
Harney:	266.076 A
Malheur:	50.54 A
Umatilla:	2,640.079 A
Morrow:	16,066.48 A
Baker:	12,340.32
Wallowa:	5,393.235
Union:	5,610.002
<b>TOTAL:</b>	<b>64,751.28 A</b>

- Legend**
- Interstate
  - Hwysate
  - County Line
  - GH infestations 05



Prepared by ODA Dept. of Agriculture (tw)  
Oregon Geospatial Data Collaborative  
ODA Dept. of Agriculture  
The information contained herein is for informational purposes only and may not have been prepared for or the author for legal, engineering, or other professional use. The information should be reviewed or revised the primary data and information sources to ascertain the accuracy of the information.

Map Date: January 3, 2006  
For further information please contact:  
Heather Rife (541-983-4608) or Kathleen Johnson (503-985-4623), ODA  
Gary Brown and Mitch Nelson (503-326-2814), USDA-APHIS-PPQ



# Map 4 Ecoregions Of Eastern Oregon

- Columbia Plateau
- Blue Mountains
- Snake River Plain
- Northern Basin & Range
- Central Basin & Range
- Eastern Cascades Slopes & Foothills

