

Clackamas County

ECONOMIC INDICATORS

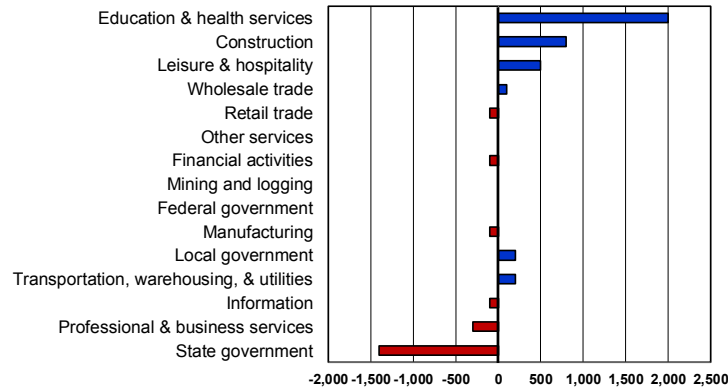
May/June 2018



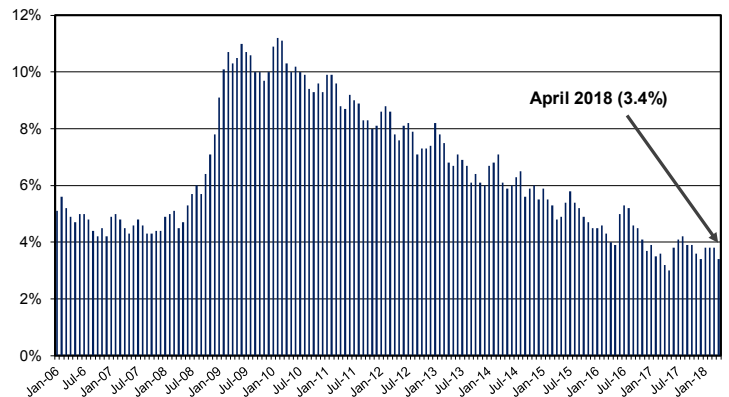
Health care and construction continue to drive job growth.

For the last 8 months, the unemployment rate has been below 4 percent in Clackamas County.

Year-to-Year Change in Employment
Clackamas County (Apr-2017 to Apr-2018)
(Job Gain: 1,700)



Unemployment Rate, Clackamas County
January 2006 to April 2018



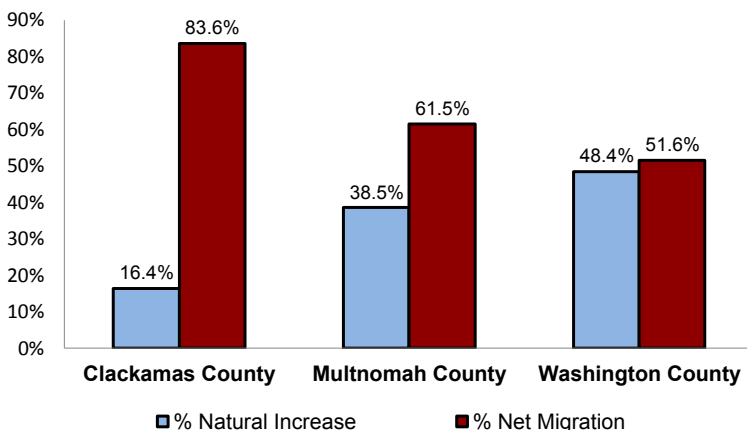
Employment Trends

Clackamas County added 1,700 jobs from a year ago with health care, construction, and leisure and hospitality adding the most jobs. The unemployment rate fell to 3.4 percent in April from 3.8 percent the previous month.

Population Trends — Clackamas County Is a High Migration County.

Clackamas County's population reached 413,000 in 2017 and 803,000 and 595,860 in Multnomah and Washington counties, respectively. Net migration (in migration- out migration) contributed the majority of population growth from 2010-2017 in all three Portland Metro counties.

Components of Population Change:
Natural Increase and Net Migration (2010-2017)



- Clackamas County experienced a significantly higher portion of net migration than either Multnomah or Washington counties during 2010-2017.
- Over four-fifths (83.6%) of population growth in Clackamas County can be attributed to net migration while only 16.4 percent was due to natural increase (births-deaths).
- Compared to Clackamas County, Multnomah and Washington counties saw a lower portion of population growth from net migration and a much higher portion of population growth from natural increase.

For any questions or to be added to the listserve:

Contact: Lynn Wallis, economist
Lynn.N.Wallis@oregon.gov (971) 804-2100