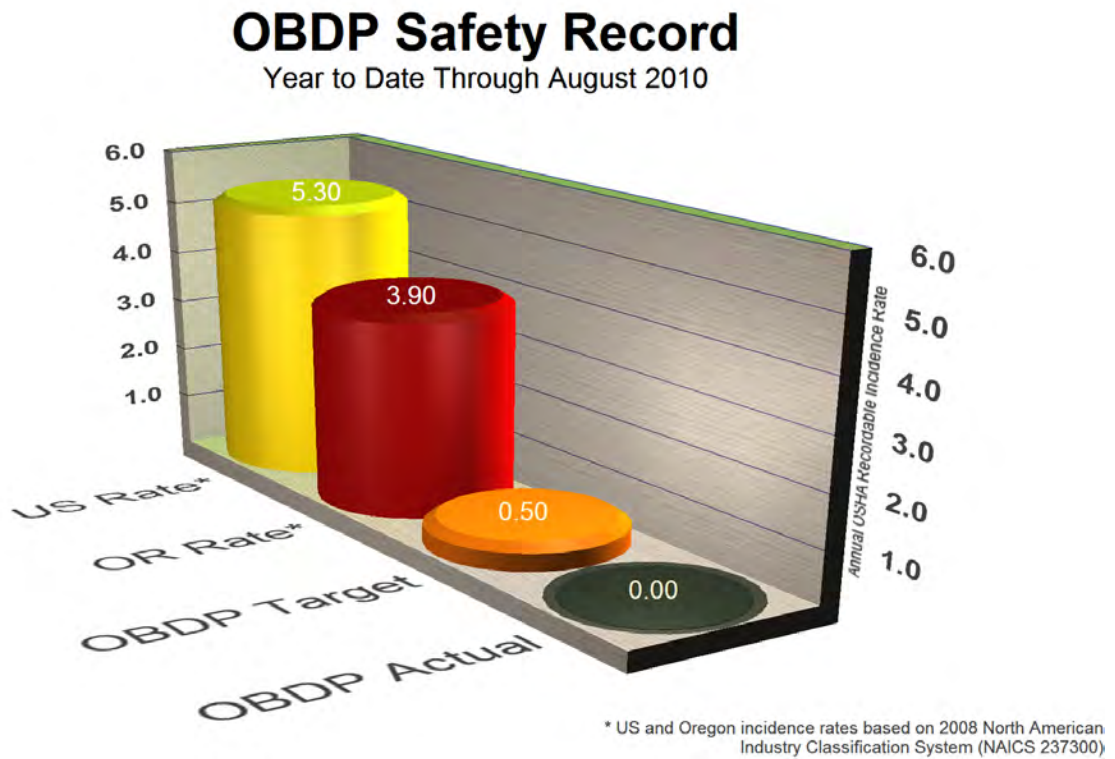


## SAFETY

Through August 2010, OBDP continues to have a notable safety record, earning 2,526,892 hours worked without an OSHA restricted or lost workday incident.

The figure below illustrates the annual OBDP actual versus the US rate, Oregon rate, and OBDP target.



---

## QUALITY PROGRAM SUMMARY FOR AUGUST 2010

The OBDP Quality Program implementation continues to conform to the five program goals. These five goals are continually monitored using CS<sup>3</sup> processes (see Performance Measurement on this web site) to identify improvement opportunities and resolve potential concerns.

OBDP is implementing the following Quality Program processes to support the overall bridge program.

### Training Status

Training is one of the most important CS<sup>3</sup> process tools. OBDP is currently coordinating and/or providing training, as needed, in the following areas:

- Safety Training
- CS<sup>3</sup> Training
- Traffic Control – Flagger and Traffic Control Supervisor
- Defensive Driving
- Document Control Training
- Bridge Project Delivery
- Environmental Training
- State Travel Expenditure Training
- CEI Training
- ODOT Inspection Certification
- Mobility Training
- Surveillance Training

## Consultant and Contractor Quality Plan Review Status

OBDP's approach to improving consultant and contractor quality is by using the CS<sup>3</sup> process of employing efficient and cost-effective delivery practices. OBDP implemented, with ODOT assistance, two standard quality plan templates: 1) Design Quality Plan template, and 2) Construction Quality Plan template.

Quality Plans	Design (DBB)	Design-Build	Construction (DBB)	Specialty Contracts
Quality plans submitted through August 2010	38	8	31	49
Quality plans submitted and/or reviewed in August 2010	0	0	0	0
Quality plans accepted	38	8	31	23
Quality plans conditionally accepted	0	0	0	2
Quality plans not accepted - (N/A)*	0	0	0	24*

## OBDP Nonconformance Report Status

OBDP uses a tracking system that identifies work process discrepancies—including specification and drawing discrepancies—and ensures appropriate correction and disposition. This process is a proven management tool for addressing problems and promoting continuous improvement.

Item	Quantity
Total non-conformances issued through August 2010	645
Non-conformances issued in August 2010	1
Non-conformances closed in August 2010	4
Non-conformances remaining open in August 2010	13

## OBDP Surveillance Report Status

OBDP implements a performance-based quality surveillance tracking system to identify real-time quality program activities.

Item	Quantity
Total surveillances conducted through August 2010	3538
Surveillance reports closed through August 2010	3500
Surveillance findings issued in August 2010	24
Surveillance findings closed in August 2010	68
Surveillance findings remaining open in August 2010	41

## Quality Audit Report Status

OBDP implemented an audit process to assure the bridge program is correctly implemented in both design and construction.

QA Audits	Design (DBB)	Design (DB)	Construction (DBB)	Construction (DB)
Audits conducted through August 2010	44	14	54	17
Audits conducted in August 2010	0	0	0	1
Audit findings issued in August 2010	0	0	0	2
Audit findings closed in August 2010	0	0	0	3
Audit findings remaining open in August 2010	0	0	0	2

The results indicate that as a whole these bundles are being implemented in accordance with approved quality principals.

## ODOT Quality Assessment Report Status

ODOT has implemented a quality assessment program, and OBDP is working with the assessors to assist them in resolving any reported issues.

Item	Quantity
Total Delcan assessments conducted through August 2010	436
Assessments conducted in August 2010	8
Assessment non-conformances issued in August 2010	1
Assessment non-conformances resolved in August 2010	2
Assessment non-conformances remaining unresolved in August 2010	6

## Environmental Field Inspection Status

The OBDP environmental field inspection process is an important tool for verifying environmental compliance on construction bundles. Environmental compliance is imperative to meet our goal of building projects sensitive to communities and landscapes.

Item	Quantity
Total environmental inspections conducted to date	2052
Deficiencies noted to date	1800
Environmental inspections conducted in August 2010	34
Deficiencies noted in August 2010	18

Item	Quantity
Violations noted in August 2010	0
NCRs issued in August 2010	0
Deficiencies closed in August 2010	35
Violations closed in August 2010	0
NCRs closed in August 2010	0
Environmental inspections reports opened in August 2010	10
Deficiencies remaining open in August 2010	9
Violations remaining open in August 2010	2
NCRs remaining open in August 2010	2

**OTIA III State Bridge Delivery Program**  
**September, 2010 Summary of Stages 1-5 Progress**  
**As of August, 2010 Month End**

Source: OBDP Bridge Reporting System (BRS)

**OTIA III State Bridge Delivery Program - Design**

	Design Complete	Design Underway	Design Planned To Begin in 2007	Design Planned To Begin in 2008	Design Planned To Begin in 2009	Design Planned To Begin in 2010	Design Planned To Begin in 2011	Design Planned To Begin in 2012	No Work	OTIA III Funded Bridges	% Underway
Stage 1	22	0	0	0	0	0	0	0	1	23	100%
Stage 2	81	1	0	0	0	0	0	0	37	119	100%
Stage 3	85	3	0	0	0	0	0	0	16	104	100%
Stage 4	42	7	0	0	0	0	0	0	28	77	100%
Stage 5	24	6	0	0	0	0	0	0	12	42	100%
<b>TOTALS</b>	<b>254</b>	<b>17</b>	<b>0</b>	<b>0</b>	<b>0</b>	<b>0</b>	<b>0</b>	<b>0</b>	<b>94</b>	<b>365</b>	<b>100%</b>

**OTIA III State Bridge Delivery Program - Construction**

	Open to Traffic	Construction Underway	Construction Planned To Begin in 2007	Construction Planned To Begin in 2008	Construction Planned To Begin in 2009	Construction Planned To Begin in 2010	Construction Planned To Begin in 2011	Construction Planned To Begin in 2012	No Work	OTIA III Funded Bridges	% Underway
Stage 1	22	0	0	0	0	0	0	0	1	23	100%
Stage 2	74	7	0	0	0	0	0	0	37	119	100%
Stage 3	81	6	0	0	0	0	1	0	16	104	99%
Stage 4	18	31	0	0	0	0	0	0	28	77	100%
Stage 5	15	13	0	0	0	2	0	0	12	42	93%
<b>TOTALS</b>	<b>210</b>	<b>57</b>	<b>0</b>	<b>0</b>	<b>0</b>	<b>2</b>	<b>1</b>	<b>0</b>	<b>94</b>	<b>365</b>	<b>99%</b>

OTIA III State Bridge Delivery Program
September, 2010 Summary of Stages 1-5 Progress by Project
As of August, 2010 Month End
Source: OBDP Bridge Reporting System (BRS)

Stage 1

Project Identification Data

General Project Data

Scope & Budget

Status

Table for Stage 1 containing columns: Unique ID, Original Bridge Number, New Bridge Number, Project Name, Region, County, District, Route, Highway, MP, Construction Bundle Number, Key Number, Original Scope, Original Budget, Current Scope, Current Budget, Design Status, Const. Status.

SUB-TOTALS

\$60,729,600

\$64,353,688

Stage 2

Project Identification Data

General Project Data

Scope & Budget

Status

Table for Stage 2 containing columns: Unique ID, Original Bridge Number, New Bridge Number, Project Name, Region, County, District, Route, Highway, MP, Construction Bundle Number, Key Number, Original Scope, Original Budget, Current Scope, Current Budget, Design Status, Const. Status.











Const. Bundle Number	Construction Management By	Key Number	Construction Bundle Name	OTIA III Funded No. of Bridges	Approved No Work Bridges	Repair /Replace Bridges	ODOT Regions	County	Planned A&E Award or Design k/o	Planned Construction Let Date or Design k/o
----------------------	----------------------------	------------	--------------------------	--------------------------------	--------------------------	-------------------------	--------------	--------	---------------------------------	---

**NOTES:**

Bundle numbers correspond to program stage construction bundles. For example, Bundle 102 is in Stage 1, and "A" represents Stage 1A.  
Updated bundle information is posted to the bridge program web site as it becomes available: [http://egov.oregon.gov/ODOT/HWY/OTIA/bridge\\_delivery.shtml](http://egov.oregon.gov/ODOT/HWY/OTIA/bridge_delivery.shtml).  
"D-B" represents a design-build bundle.



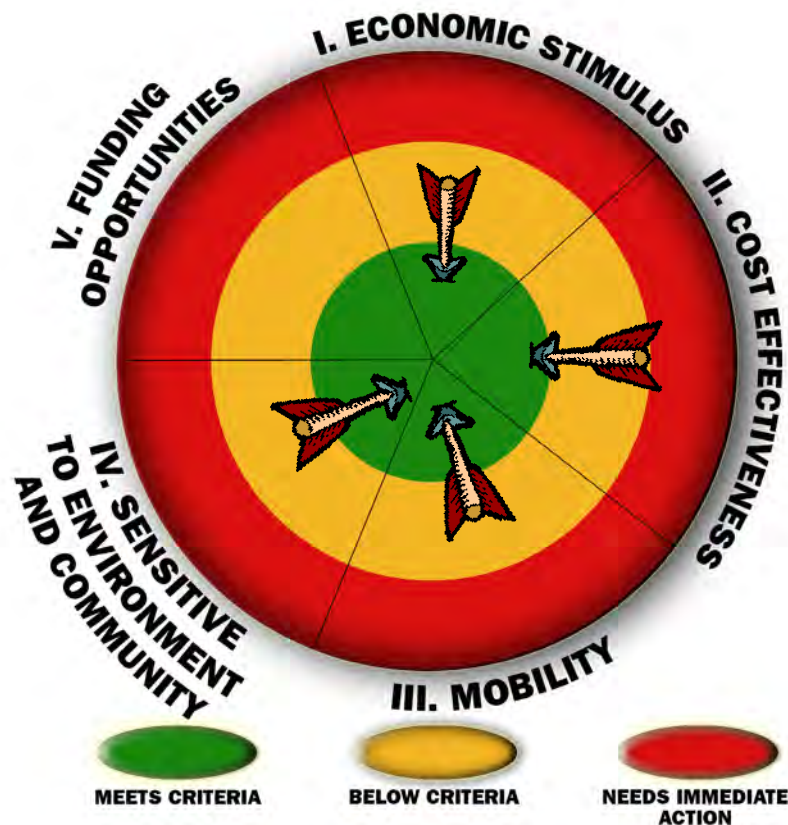
---

## PERFORMANCE MEASUREMENT

### Performance Measures for Regular Reporting

Each month, program managers collect data and report on information relevant to CS<sup>3</sup> and the bridge program goals. Some of these performance measures provide valuable information to program and project managers in making day-to-day management decisions. Other performance measures are regularly reported to ODOT, the legislature, and stakeholders and convey the overall quality of the bridge program.

The Bull's Eye graphic below presents a summary of the performance measures reported on the following page. The location of the arrow is determined by averaging the reported performance measures in each goal area. The intent of the Bull's Eye graphic is to illustrate how the goals are balanced and interrelated. As the program continues to grow, the performance measures reported here will be assessed for the quality of the information provided. Every six months, ODOT and OBDP may modify the reporting methodologies for the performance measures. A full list of performance measures and their methodologies is available in the CS<sup>3</sup> Performance Measure Framework on the Oregon Bridge Delivery Partners web site: [www.obdp.org](http://www.obdp.org).



## September 2010 CS<sup>3</sup> Performance Measures

Methodology Number*	Outcome Measure	July 2010	August 2010	Brief Description of Activity
<b>Goal 1. Stimulate Oregon's economy</b>				
#4	Total value of design and construction contracts expended	R	R	From June 2010 to August 2010, there was a 58 percent average variance between the total value of contracts planned to be let versus contracts actually expended. The status is red because the variance is greater than 20 percent.
#5	Program management expenditures for Oregon vs. non-Oregon firms	G	G	OBDP spent 99.9 percent of program expenditures on Oregon firms in August 2010.
<b>Goal 2. Employ efficient and cost-effective delivery practices</b>				
#18	Number of design-bid-build bridges with design phase contractually completed	G	G	To date, 10 percent of the design phase of planned design-bid-build bridges is contractually complete.
#19	Number of design-bid-build bridges with construction phase contractually completed	G	G	To date, 94 percent of the construction phase of planned design-bid-build bridges is contractually complete.
#20	Number of design-build bridges contractually completed	G	G	To date, 100 percent of the planned design-build bridges are contractually complete.
#21	Percent of bridges on schedule for OTIA III State Bridge Delivery Program	Y	Y	Currently, 80 percent of OTIA III bridges are on schedule. This represents an increase of one percent from last month.
#22	Percent of bridges on budget for OTIA III State Bridge Delivery Program	Y	Y	Currently, 80 percent of OTIA III bridges are on budget. This represents an increase of one percent from last month.
<b>Goal 3. Maintain freight mobility/keep traffic moving</b>				
#27	Total travel time through corridor <sup>1</sup>			
#27A	I-5 North Corridor / OR 58 (US 97) to Washington State Line	G	G	Corridor delays are in alignment with corridor delay threshold.
#27B	I-5 South Corridor / OR 58 (Eugene, OR) to California State Line	G	G	Corridor delays are in alignment with corridor delay threshold.
#27C	I-84 Corridor I-205 (Portland, OR) to Idaho State Line	G	G	Corridor delays are in alignment with corridor delay threshold.
#27D	US 26 / US 97 I-205 (Clackamas) to California State Line	G	G	Corridor delays are in alignment with corridor delay threshold.
<b>Goal 4. Build projects sensitive to communities and their landscape</b>				
#36	Percent of projects using environmental programmatic permitting	G	G	To date, 95 percent of eligible bridges are using the environmental programmatic permitting process.

Methodology Number*	Outcome Measure	July 2010	August 2010	Brief Description of Activity
#37	Percent of projects with permit amendments and variances requested that do not lead to greater environmental impact	G	G	The bridge program received one formal violation in November 2009. However, that does not change the reporting metric as 85 percent or more of construction projects did not require permit amendments or variances that led to greater environmental impacts.
<b>Goal 5. Capitalize on funding opportunities</b>				
#43	Percent of bridge program funded by alternative sources	N/A	N/A	No outcome measures in development.

\* This refers to the outcome measure number in the CS<sup>3</sup> Performance Measures Framework. This document contains the methodology and targets for all performance measures. It can be found at: [www.obdp.org](http://www.obdp.org)

<sup>1</sup> Corridor travel times do not include data from Region managed projects.

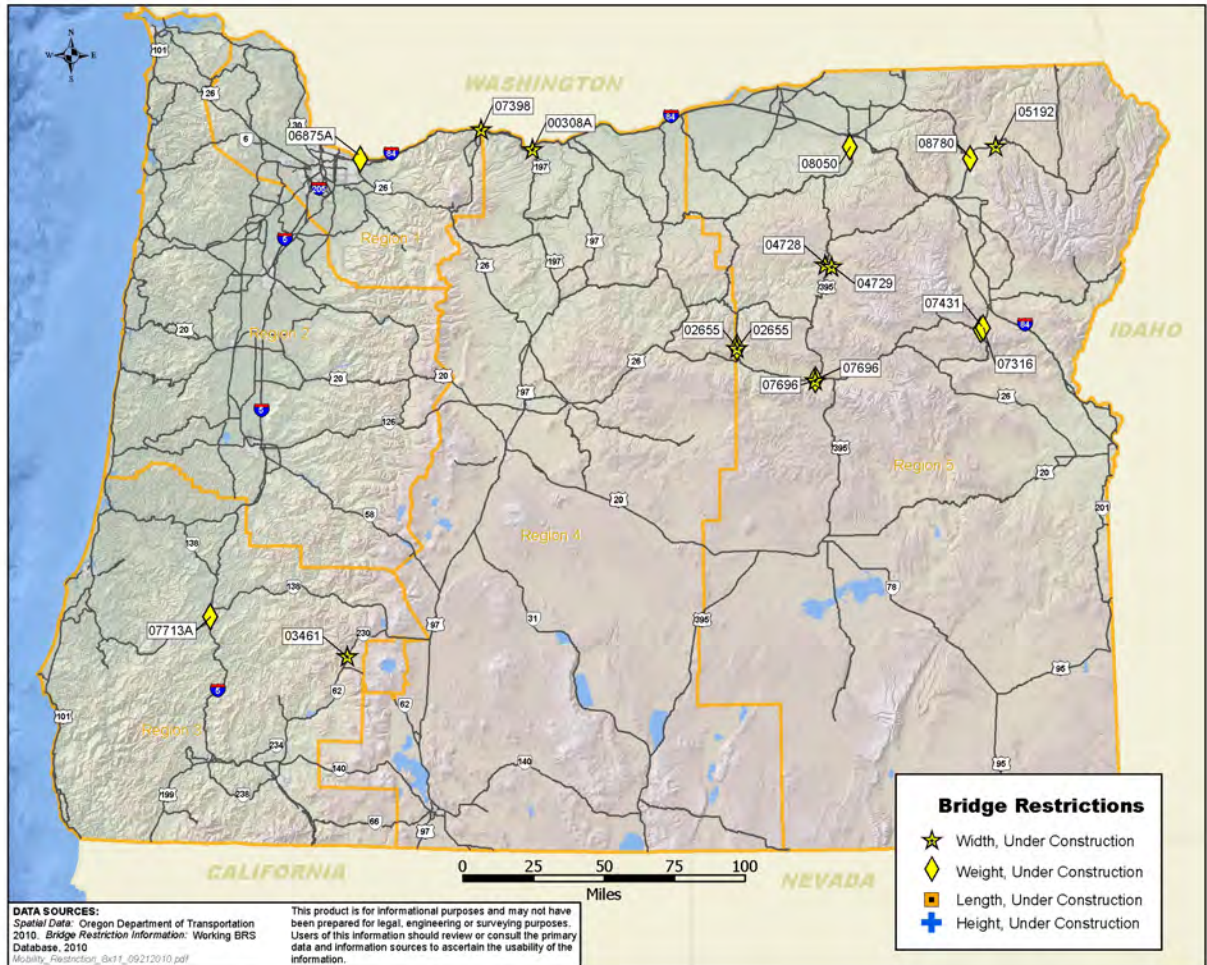


Indicator Measures

Goal 3. Maintain freight mobility/keep traffic moving

Location of bridges under construction with height, width and/or weight restrictions:

#15



# OTIA III State Bridge Delivery Program

## 13-MONTH LOOK AHEAD

Updated through August 2010 month end

(Note: \* indicates date has been locked until changes are approved)

Activity Name	Target	Current Forecast	[ID]	13-MONTH LOOK AHEAD																			
				Qtr 3, 2010	Qtr 4, 2010	Qtr 1, 2011	Qtr 2, 2011	Qtr 3, 2011	Qtr 4, 2011														
				Jun	Jul	Aug	Sep	Oct	Nov	Dec	Jan	Feb	Mar	Apr	May	Jun	Jul	Aug	Sep	Oct	Nov	Dec	
<b>CONSTRUCTION LETTING</b>																							
510 Bid Opening / Let Date (OR6: Devils Lake Fork Wilson River)	06/24/10	06/24/10 A	5		06/24/10 A																		
409 Bid Opening / Let Date (US 20: Beaver Creek - Marys River)	08/19/10	08/19/10 A	4				08/19/10 A																
513 Bid Opening / Let Date (OR200: Bear Cr. - S. Fork Siuslaw River - Bundle 513)	09/09/10	09/09/10*	5					09/09/10*															
509 Bid Opening / Let Date (OR200: South Fork Siuslaw River - Bundle 509)	11/04/10	11/04/10*	5						11/04/10*														
357 Bid Opening / Let Date (I-5: Del Rio Rd/Winchester Interchange)	03/03/11	03/03/11*	R											03/03/11*									
<b>CONSTRUCTION</b>																							
A06 Construction Complete (2nd Notice) (I-5: Seven Oaks Interchange)	10/31/08	10/31/10*	R																				
301 Construction Complete (2nd Notice) (I-5: Eagle Mill Rd - Neil Creek Rd)	11/15/09	09/17/10*	3																				
415 Construction Complete (2nd Notice) (US 30: Big Creek - Tide Creek)	06/30/10	03/30/10 A	R				03/30/10 A																
304 Construction Complete (2nd Notice) (I-5: Louse Creek - US 199)	07/11/10	10/30/10*	3																				
209 Construction Complete (2nd Notice) (I-84: Dodson - Tanner Creek)	07/21/10	09/15/10*	2																				
308 Construction Complete (2nd Notice) (I-5: N. Umpqua River Bridges (Winchester))	08/31/10	08/26/10 A	R																				
512 Construction Complete (2nd Notice) (OR6:Wilson R-US26:Hwy 47 WB over PNWR (Vadis))	10/15/10	04/05/10 A	R																				
427 Construction Complete (2nd Notice) (US395: Canyon Cr - US26: Dixie Cr - Bundle 427)	10/20/10	10/20/10*	R																				
208 Construction Complete (2nd Notice) (I-84: Cascade Locks - 2nd St (Hood River))	10/31/10	09/15/10*	2																				
457 Construction Complete (2nd Notice) (OR 7: Powder River)	10/31/10	10/31/10*	R																				
225 Construction Complete (2nd Notice) (I-84: Hood River - Mosier Creek)	10/31/10	10/31/10	2																				
310 Construction Complete (2nd Notice) (I-5: Coast Fork Willamette - Martin Creek)	11/16/10	10/31/10*	3																				
426 Construction Complete (2nd Notice) (OR19: Harper Cr- Mule Shoe Cr - Bundle 426)	11/30/10	11/30/10*	R																				
510 Construction Complete (2nd Notice) (OR6: Devils Lake Fork Wilson River)	04/05/11	04/05/11*	5																				
511 Construction Complete (2nd Notice) (US26: East Fork Dairy Cr - McKay Cr)	05/11/11	05/11/11*	5																				
405 Construction Complete (2nd Notice) (OR 42: Beaver Cr - Mid Fork Coquille R)	05/31/11	05/31/11*	4																				
409 Construction Complete (2nd Notice) (US 20: Beaver Creek - Marys River)	05/31/11	05/31/11*	4																				
307 Construction Complete (2nd Notice) (I-5/OR 42: Winston - McLain Ave)	06/30/11	01/25/11*	R																				
352 Construction Complete (2nd Notice) (I-5: S. Umpqua R. & CORP (Shady))	08/31/11	08/31/11*	R																				
224 Construction Complete (2nd Notice) (I-84: Exit 64 (Hood River))	09/29/11	09/29/11*	2																				
508 Construction Complete (I-5: Elkhead Rd - OR 126: Knowles Cr (D/B))	10/28/11	09/01/11*	5																				
207 Construction Complete (2nd Notice) (I-84:Fifteen Mile Creek-US97:Spanish Hollow Cr - B207)	10/31/11	10/31/11	R																				
428 Construction Complete (2nd Notice) (US 20: Beaver Creek - Marys River)	10/31/11	10/31/11*	4																				
414 Construction Complete (US 395: McKay Cr - Silvies Slough (D/B))	11/21/11	05/31/11*	R																				
560 Construction Complete (2nd Notice) (OR230/OR138: North Umpqua - Upper Rogue)	11/30/11	11/30/11*	R																				
454 Construction Complete (US 20: Pioneer Mtn - Eddyville (D/B))	12/22/11	12/22/11*	R																				

### FOR INFORMATION ONLY

ID 1-5: Represents Stage. CEI by OBDP.

ID "R": CEI by ODOT/Region.

- ◆ Current Forecast
- ▲ Target Schedule