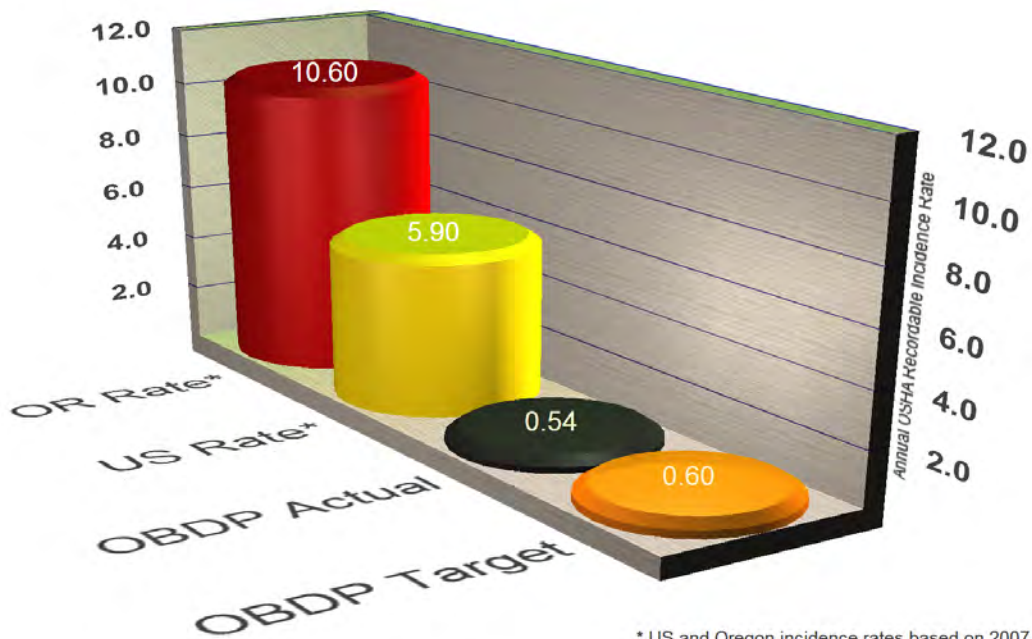


SAFETY

Through November 2009, OBDP continues to have a notable safety record, earning 2,308,117 hours worked without an OSHA restricted or lost workday incident. The figure below illustrates the OBDP actual versus the US rate, Oregon rate, and OBDP target.

OBDP Safety Record

Through November 2009



* US and Oregon incidence rates based on 2007 North American Industry Classification System (NAICS 237300)

QUALITY PROGRAM SUMMARY FOR NOVEMBER 2009

The OBDP Quality Program implementation continues to conform to the five program goals. These five goals are continually monitored using CS³ processes (see Performance Measurement on this web site) to identify improvement opportunities and resolve potential concerns.

OBDP is implementing the following Quality Program processes to support the overall bridge program.

Training Status

Training is one of the most important CS³ process tools. OBDP is currently coordinating and/or providing training, as needed, in the following areas:

- Safety Training
- CS³ Training
- Traffic Control – Flagger and Traffic Control Supervisor
- Defensive Driving
- Document Control Training
- Bridge Project Delivery
- Environmental Training
- State Travel Expenditure Training
- CEI Training
- ODOT Inspection Certification
- Mobility Training
- Surveillance Training

Consultant and Contractor Quality Plan Review Status

OBDP's approach to improving consultant and contractor quality is by using the CS³ process of employing efficient and cost-effective delivery practices. OBDP implemented, with ODOT assistance, two standard quality plan templates: 1) Design Quality Plan template, and 2) Construction Quality Plan template.

Quality Plans	Design (DBB)	Design-Build	Construction (DBB)	Specialty Contracts
Quality plans submitted through November 2009	38	8	28	49
Quality plans submitted and/or reviewed in November 2009	1	0	1	0
Quality plans accepted	38	8	28	23
Quality plans conditionally accepted	0	0	0	2
Quality plans not accepted - (N/A)*	0	0	0	24*

OBDP Nonconformance Report Status

OBDP uses a tracking system that identifies work process discrepancies—including specification and drawing discrepancies—and ensures appropriate correction and disposition. This process is a proven management tool for addressing problems and promoting continuous improvement.

Item	Quantity
Total non-conformances issued through November 2009	601
Non-conformances issued in November 2009	7
Non-conformances closed in November 2009	18
Non-conformances remaining open in November 2009	21

OBDP Surveillance Report Status

OBDP implements a performance-based quality surveillance tracking system to identify real-time quality program activities.

Item	Quantity
Total surveillances conducted through November 2009	3132
Surveillance reports closed through November 2009	3087
Surveillance findings issued in November 2009	17
Surveillance findings closed in November 2009	99
Surveillance findings remaining open in November 2009	40

Quality Audit Report Status

OBDP implemented an audit process to assure the bridge program is correctly implemented in both design and construction.

QA Audits	Design (DBB)	Design (DB)	Construction (DBB)	Construction (DB)
Audits conducted through November 2009	42	13	47	11
Audits conducted in November 2009	2	0	2	0
Audit findings issued in November 2009	0	0	1	0
Audit findings closed in November 2009	0	0	0	0
Audit findings remaining open in November 2009	0	2	1	0

The results indicate that as a whole these bundles are being implemented in accordance with approved quality principals.

ODOT Quality Assessment Report Status

ODOT has implemented a quality assessment program, and OBDP is working with the assessors to assist them in resolving any reported issues.

Item	Quantity
Total Delcan assessments conducted through November 2009	358
Assessments conducted in November 2009	10
Assessment non-conformances issued in November 2009	6
Assessment non-conformances resolved in November 2009	4
Assessment non-conformances remaining unresolved in November 2009	16

Environmental Field Inspection Status

The OBDP environmental field inspection process is an important tool for verifying environmental compliance on construction bundles. Environmental compliance is imperative to meet our goal of building projects sensitive to communities and landscapes.

Item	Quantity
Total environmental inspections conducted to date	1808
Deficiencies noted to date	1613
Environmental inspections conducted in November 2009	31
Deficiencies noted in November 2009	17
Violations noted in November 2009	3

Item	Quantity
NCRs issued in November 2009	2
Deficiencies closed in November 2009	34
Violations closed in November 2009	0
NCRs closed in November 2009	0
Environmental inspections reports opened in November 2009	16
Deficiencies remaining open in November 2009	25
Violations remaining open in November 2009	2
NCRs remaining open in November 2009	2

OTIA III State Bridge Delivery Program
December, 2009 Summary of Stages 1-5 Progress
As of November, 2009 Month End

Source: OBDP Bridge Reporting System (BRS)

OTIA III State Bridge Delivery Program - Design

	Design Complete	Design Underway	Design Planned To Begin in 2007	Design Planned To Begin in 2008	Design Planned To Begin in 2009	Design Planned To Begin in 2010	Design Planned To Begin in 2011	Design Planned To Begin in 2012	No Work	OTIA III Funded Bridges	% Underway
Stage 1	22	0	0	0	0	0	0	0	1	23	100%
Stage 2	76	6	0	0	0	0	0	0	37	119	100%
Stage 3	82	6	0	0	0	0	0	0	16	104	100%
Stage 4	26	23	0	0	0	0	0	0	28	77	100%
Stage 5	14	18	0	0	0	0	0	0	10	42	100%
TOTALS	220	53	0	0	0	0	0	0	92	365	100%

OTIA III State Bridge Delivery Program - Construction

	Open to Traffic	Construction Underway	Construction Planned To Begin in 2007	Construction Planned To Begin in 2008	Construction Planned To Begin in 2009	Construction Planned To Begin in 2010	Construction Planned To Begin in 2011	Construction Planned To Begin in 2012	No Work	OTIA III Funded Bridges	% Underway
Stage 1	22	0	0	0	0	0	0	0	1	23	100%
Stage 2	65	11	0	0	0	5	0	1	37	119	93%
Stage 3	67	18	0	0	0	2	1	0	16	104	97%
Stage 4	13	20	0	0	0	16	0	0	28	77	67%
Stage 5	10	9	0	0	0	13	0	0	10	42	59%
TOTALS	177	58	0	0	0	36	1	1	92	365	86%

OTIA III State Bridge Delivery Program
December, 2009 Summary of Stages 1-5 Progress by Project
As of November, 2009 Month End
 Source: OBDP Bridge Reporting System (BRS)

Stage 1

Project Identification Data

General Project Data

Scope & Budget

Status

Unique ID	Original Bridge Number	New Bridge Number	Project Name	Region	County	District	Route	Highway	MP	Construction Bundle Number	Key Number	Original Scope	Original Budget	Current Scope	Current Budget	Design Status	Const. Status
020	07867	19955	Hwy 171 WB over UPRR Mainline	1	Clackamas	2B	OR 224	HWY 171	5.20	101	13563	Repair	\$1,450,800	Replace	\$5,033,525	Complete	Complete
021	01439A	19956	Rock Creek, Hwy 171 WB	1	Clackamas	2B	OR 224	HWY 171	8.13	101	13563	Replace	\$3,870,000	Replace	\$3,057,826	Complete	Complete
025	00665B	19957	Alder Creek, Hwy 26	1	Clackamas	2C	US 26	HWY 026	33.24	101	13563	Replace	\$3,650,000	Replace	\$3,394,738	Complete	Complete
026	00689B	19958	Wildcat Creek, Hwy 26	1	Clackamas	2C	US 26	HWY 026	34.09	101	13563	Replace	\$1,496,000	Replace	\$1,504,527	Complete	Complete
028	02269	19959	Hwy 53 over BNSF	4	Jefferson	10	US 26	HWY 053	116.57	101	13563	Replace	\$4,284,000	Replace	\$3,476,466	Complete	Complete
030	07768	19962	Hwy 4 over BNSF (Terrebonne)	4	Deschutes	10	US 97	HWY 004	113.94	101	13563	Replace	\$1,258,800	Replace	\$5,094,268	Complete	Complete
031	01675B	19963	Pilot Butte Canal, Hwy 4 at MP 129.72	4	Deschutes	10	US 97	HWY 004	129.72	101	13563	Replace	\$1,258,000	Replace	\$1,724,821	Complete	Complete
032	08888	---	North Unit Canal & Swalley Canal, Hwy 4	4	Deschutes	10	US 97	HWY 004	136.46	101	13563	Replace	\$4,490,000	Replace	\$556,251	Complete	Complete
033	07454	19964	Hwy 4 over Crescent Conn	4	Klamath	10	US 97	HWY 004	183.16	101	13563	Replace	\$1,384,000	Replace	\$1,684,406	Complete	Complete
034	07929	19965	Hwy 4 over UPRR	4	Klamath	10	US 97	HWY 004	202.09	101	13563	Replace	\$3,844,000	Replace	\$5,516,942	Complete	Complete
022	03506A	19903	Miller Creek, Hwy 7	5	Harney	14	US 20	HWY 007	105.62	102	13208	Replace	\$968,000	Replace	\$1,395,761	Complete	Complete
023	01961A	19905	Stinkingwater Creek, Hwy 7	5	Harney	14	US 20	HWY 007	167.64	102	13208	Repair	\$1,000,000	Replace	\$1,384,617	Complete	Complete
024	01962A	19906	Middle Fork Malheur River, Hwy 7	5	Harney	14	US 20	HWY 007	174.57	102	13208	Repair	\$1,000,000	Replace	\$1,665,429	Complete	Complete
039	08352	---	Hwy 4 over UPRR & Pelican City Rd (Lakefront Blvd)	4	Klamath	11	US 97	HWY 004	272.99	103	13213	Repair	\$1,000,000	Repair	\$6,883	Complete	Complete
041	08346	19940	Hwy 4 over Oxing California Ave (Klamath Falls)	4	Klamath	11	US 97	HWY 004	274.73	103	13213	Replace	\$9,012,000	Replace	\$6,958,457	Complete	Complete
042	09692	19941	Hwy 4 over Green Springs Dr (Old Alignment) & BNSF	4	Klamath	11	US 97	HWY 004	275.75	103	13213	Replace	\$9,484,000	Replace	\$8,899,407	Complete	Complete
027	03026A	19723	Zig Zag River, Hwy 26 at MP 46.02	1	Clackamas	2C	US 26	HWY 026	46.04	105	12171	Replace	\$1,944,000	Replace	\$1,608,909	Complete	Complete
035	06884	19769	Spring Creek, Hwy 4	4	Klamath	11	US 97	HWY 004	243.98	152	13585	Replace	\$1,380,000	Replace	\$4,902,495	Complete	Complete
036	06886	---	Hwy 4 over Hwy 422 (Chiloquin)	4	Klamath	11	US 97	HWY 004	247.54	152	13585	Replace	\$1,384,000	Repair	\$379,949	Complete	Complete
037	07302	19823	Barkley Springs Irrigation Canal, Hwy 4	4	Klamath	11	US 97	HWY 004	263.11	152	13585	Replace	\$956,000	Replace	\$2,779,026	Complete	Complete
038	07301	19927	Algoma Log Pond, Hwy 4	4	Klamath	11	US 97	HWY 004	265.65	152	13585	Replace	\$1,384,000	Replace	\$2,260,799	Complete	Complete
029	00971A	20008	Willow Creek, Hwy 4 NB	4	Jefferson	10	US 97	HWY 004	92.11	154	13573	Replace	\$930,000	Replace	\$1,092,838	Complete	Complete
040	08345	---	USBR Canal, Hwy 4	4	Klamath	11	US 97	HWY 004	273.71	200	13310	Replace	\$3,302,000	No Work	\$0	No Work	No Work
SUB-TOTALS													\$60,729,600		\$64,378,320		

Stage 2

Project Identification Data

General Project Data

Scope & Budget

Status

Unique ID	Original Bridge Number	New Bridge Number	Project Name	Region	County	District	Route	Highway	MP	Construction Bundle Number	Key Number	Original Scope	Original Budget	Current Scope	Current Budget	Design Status	Const. Status
053	08180N	---	McKenzie Oflow, Hwy 1 NB at MP 196.19	2	Lane	5	I-5	HWY 001	196.19	200	13310	Repair	\$1,000,000	No Work	\$0	No Work	No Work
054	08180S	---	McKenzie Oflow, Hwy 1 SB at MP 196.19	2	Lane	5	I-5	HWY 001	196.19	200	13310	Repair	\$1,000,000	No Work	\$0	No Work	No Work
061	08241N	---	Courtney Creek, Hwy 1 NB	2	Linn	4	I-5	HWY 001	216.97	200	13310	Repair	\$1,000,000	No Work	\$0	No Work	No Work
062	08241S	---	Courtney Creek, Hwy 1 SB	2	Linn	4	I-5	HWY 001	216.97	200	13310	Repair	\$1,000,000	No Work	\$0	No Work	No Work
063	08239N	---	Sodom Ditch Oflow, Hwy 1 NB	2	Linn	4	I-5	HWY 001	217.39	200	13310	Repair	\$1,000,000	No Work	\$0	No Work	No Work
064	08239S	---	Sodom Ditch Oflow, Hwy 1 SB	2	Linn	4	I-5	HWY 001	217.39	200	13310	Repair	\$1,000,000	No Work	\$0	No Work	No Work
083	08218A	---	Hwy 1 NB over Murder Creek Rd	2	Linn	4	I-5	HWY 001	235.67	200	13310	Repair	\$1,000,000	No Work	\$0	No Work	No Work
084	08218B	---	Hwy 1 SB over Murder Creek Rd	2	Linn	4	I-5	HWY 001	235.67	200	13310	Repair	\$1,000,000	No Work	\$0	No Work	No Work
085	08217	---	Murder Creek, Hwy 1 SB	2	Linn	4	I-5	HWY 001	235.71	200	13310	Repair	\$1,000,000	No Work	\$0	No Work	No Work
142	07970	---	Stanton Blvd over Hwy 6	5	Malheur	14	STANTON BLVD		371.45	202	14024	Replace	\$2,538,000	Repair	\$631,111	Complete	Complete
143	07971	20378	Hwy 6 EB over Doman Road	5	Malheur	14	I-84	HWY 006	372.18	202	14024	Replace	\$1,910,000	Replace	\$2,470,492	Complete	Complete
144	08397E	---	Hwy 6 EB over UPRR (Ore-Ida)	5	Malheur	14	I-84	HWY 006	375.80	202	14024	Replace	\$2,810,000	No Work	\$0	No Work	No Work
145	08397W	---	Hwy 6 WB over UPRR (Ore-Ida)	5	Malheur	14	I-84	HWY 006	375.80	202	14024	Replace	\$2,810,000	No Work	\$0	No Work	No Work
146	08107W	---	Snake River, Hwy 6 WB	5	Malheur	14	I-84	HWY 006	378.01	202	14024	Replace	\$12,832,000	Repair	\$1,654,927	Complete	Complete
147	08107E	---	Snake River, Hwy 6 EB	5	Malheur	14	I-84	HWY 006	378.01	202	14024	Replace	\$12,832,000	Repair	\$1,372,875	Complete	Complete
139	01786A	---	Burnt River (Dixie Creek), Hwy 6	5	Baker	14	I-84	HWY 006	340.58	203	14116	Replace	\$4,484,000	Repair	\$617,849	Complete	Complete
140	09354	20482/3	Hwy 6 over Lime Intchg Conn	5	Baker	14	I-84	HWY 006	342.91	203	14116	Replace	\$10,874,000	Replace	\$13,997,695	Complete	Underway
133	08302E	---	Hwy 6 EB over Conn & UPRR (Encina Intchg)	5	Baker	13	I-84	HWY 006	313.65	204	14026	Repair	\$1,233,600	Repair	\$231,600	Complete	Complete
134	08302W	---	Hwy 6 WB over Conn & UPRR (Encina Intchg)	5	Baker	13	I-84	HWY 006	313.65	204	14026	Repair	\$1,264,200	Repair	\$211,533	Complete	Complete
135	08423E	---	Hwy 6 EB over Alder Creek Rd	5	Baker	13	I-84	HWY 006	315.29	204	14026	Replace	\$2,342,000	Repair	\$307,539	Complete	Complete
136	08423W	---	Hwy 6 WB over Alder Creek Rd	5	Baker	13	I-84	HWY 006	315.29	204	14026	Replace	\$2,356,000	Repair	\$331,336	Complete	Complete
137	07987	---	Pritchard Creek & UPRR, Hwy 6 WB	5	Baker	13	I-84	HWY 006	325.31	204	14026	Repair	\$2,103,000	Repair	\$357,181	Complete	Complete
138	07987A	---	Pritchard Creek & UPRR, Hwy 6 EB	5	Baker	13	I-84	HWY 006	325.34	204	14026	Repair	\$2,084,000	Repair	\$359,796	Complete	Complete
132	07292B	---	Hwy 6 EB over UPRR (North Powder)	5	Union	13	I-84	HWY 006	285.84	205	14027	Replace	\$2,918,000	Repair	\$2,547,431	Complete	Underway
125	08931E	---	Hwy 6 EB over Irrigon Junction Intchg Conn	5	Morrow	12	I-84	HWY 006	167.95	206	14028	Replace	\$4,204,000	Repair	\$1,393,702	Complete	Complete
126	08931W	---	Hwy 6 WB over Irrigon Junction Intchg Conn	5	Morrow	12	I-84	HWY 006	167.97	206	14028	Replace	\$4,204,000	Repair	\$1,352,253	Complete	Complete
127	16453	---	Hwy 6 WB over Hwy 70 EB	5	Umatilla	12	I-84	HWY 006	179.43	206	14028	Repair	\$1,000,000	No Work	\$28,399	No Work	No Work
128	16454	---	Hwy 6 EB over Hwy 70 EB	5	Umatilla	12	I-84	HWY 006	179.45	206	14028	Repair	\$1,014,000	No Work	\$28,406	No Work	No Work
129	08498E	---	Hwy 6 EB over Frtg Rd & UPRR (Meacham)	5	Umatilla	12	I-84	HWY 006	237.95	206	14028	Replace	\$6,006,000	Repair	\$1,061,319	Complete	Complete
130	08498W	---	Hwy 6 WB over Frtg Rd & UPRR (Meacham)	5	Umatilla	12	I-84	HWY 006	237.95	206	14028	Replace	\$6,018,000	Repair	\$1,133,979	Complete	Complete
131	00449A	---	Hwy 6 over Emigrant Hill Frtg Rd & UPRR (Glover)	5	Union	12	I-84	HWY 006	248.55	206	14028	Replace	\$5,808,000	Repair	\$1,404,845	Complete	Complete
149	08502	20255	Hwy 341 over Hwy 6 (Hilgard Intchg)	5	Union	12	OR 244	HWY 341	253.03	206	14028	Repair	\$1,044,000	Replace	\$7,013,097	Complete	Complete
123	00308A	20875	Fifteen Mile Creek, Hwy 2	4	Wasco	9	I-84	HWY 002	88.04	207	14029	Replace	\$8,014,000	Replace	\$13,967,488	Complete	Underway
124	07771	---	Hwy 2 over The Dalles Dam Access Conn	4	Wasco	9	I-84	HWY 002	88.83	207	14029	Repair	\$1,000,000	No Work	\$3,090	No Work	No Work
044	07458	---	Hwy 2 Frontage Rd (2nd St) over UPRR	1	Hood River	2C	I-84	HWY 002	63.98	208	14030	Repair	\$1,529,000	Repair	\$891,227	Complete	Complete
109	08610	---	Hwy 2 EB over Moody St (Cascade Locks)	1	Hood River	2C	I-84	HWY 002	43.93	208	14030	Replace	\$3,458,000	Repair	\$449,865	Complete	Complete
110	08610W	---	Hwy 2 WB over Moody St (Cascade Locks)	1	Hood River	2C	I-84	HWY 002	43.93	208	14030	Replace	\$3,458,000	Repair	\$439,610	Complete	Complete
111	08605	20743	Hwy 2 EB over Hwy 2 WB Conn to Hwy 100	1	Hood River	2C	I-84	HWY 002	45.05	208	14030	Replace	\$3,780,000	Replace	\$5,385,962	Complete	Underway
112	08605W	20742	Hwy 2 WB over Hwy 2 WB Conn to Hwy 100	1	Hood River	2C	I-84	HWY 002	45.05	208	14030	Replace	\$3,236,000	Replace	\$5,365,066	Complete	Underway
113	07403A	---	Herman Creek, Hwy 2	1	Hood River	2C	I-84	HWY 002	46.10	208	14030	Replace	\$3,158,000	No Work	\$3,625	No Work	No Work
114	08623	---	Hwy 2 over Herman Creek Conn	1	Hood River	2C	I-84	HWY 002	47.31	208	14030	Replace	\$3,114,000	Repair	\$2,075,901	Complete	Complete
115	08604	---	Hwy 2 over Conn (Wyeth Intchg)	1	Hood River	2C	I-84	HWY 002	50.99	208	14030	Replace	\$2,820,000	No Work	\$87,627	No Work	No Work
116	08534	---	Hwy 2 over Conn Viento Intchg	1	Hood River	2C	I-84	HWY 002	56.04	208	14030	Replace	\$2,820,000	No Work	\$86,947	No Work	No Work
117	07496A	---	Hwy 2 EB over Jaymar Rd (Westcliff Dr)	1	Hood River	2C	I-84	HWY 002	63.02	208	14030	Replace	\$1,850,000	No Work	\$91,323	No Work	No Work
118	08662	---	Hwy 2 EB over UPRR	1	Hood River	2C	I-84	HWY 002	63.41	208	14030	Repair	\$2,637,000	Repair	\$901,008	Complete	Complete

Stage 2

Project Identification Data

General Project Data

Scope & Budget

Status

Unique ID	Original Bridge Number	New Bridge Number	Project Name	Region	County	District	Route	Highway	MP	Construction Bundle Number	Key Number	Original Scope	Original Budget	Current Scope	Current Budget	Design Status	Const. Status
076	08226S	---	Hwy 1 SB over AERC (Tallman Branch)	2	Linn	4	I-5	HWY 001	230.86	214	14035	Replace	\$4,243,200	No Work	\$0	No Work	No Work
077	08222N	---	Cox Creek, Hwy 1 NB	2	Linn	4	I-5	HWY 001	233.65	214	14035	Replace	\$1,636,800	No Work	\$0	No Work	No Work
078	08222S	---	Cox Creek, Hwy 1 SB	2	Linn	4	I-5	HWY 001	233.65	214	14035	Replace	\$1,636,800	No Work	\$0	No Work	No Work
045	07732B	20486	Hwy 1 NB over Hwy 18 & Conn (Goshen Grade)	2	Lane	5	I-5	HWY 001	188.34	215	14036	Replace	\$5,116,800	Replace	\$10,805,956	Complete	Complete
046	07732A	20487	Hwy 1 SB over Hwy 18 & Conn	2	Lane	5	I-5	HWY 001	188.34	215	14036	Replace	\$5,071,200	Replace	\$7,804,770	Complete	Complete
047	06836A	20179/60	Hwy 1 over Franklin Blvd & UPRR (Goshen)	2	Lane	5	I-5	HWY 001	188.91	215	14036	Replace	\$12,806,400	Replace	\$14,226,606	Complete	Complete
049	08870	---	Hwy 1 over Hwy 225 Conn (McVay Access)	2	Lane	5	I-5	HWY 001	190.76	215	14036	Replace	\$1,099,200	No Work	\$14,305	No Work	No Work
055	08178N	---	McKenzie Oflow, Hwy 1 NB at MP 196.69	2	Lane	5	I-5	HWY 001	196.69	215	14036	Replace	\$3,093,600	No Work	\$128,280	No Work	No Work
056	08178S	---	McKenzie Oflow, Hwy 1 SB at MP 196.69	2	Lane	5	I-5	HWY 001	196.69	215	14036	Replace	\$3,093,600	No Work	\$198,508	No Work	No Work
057	08175N	20597	McKenzie River & Frtg Rd, Hwy 1 NB (Spores)	2	Lane	5	I-5	HWY 001	197.38	215	14036	Replace	\$13,624,800	Replace	\$11,883,831	Complete	Complete
058	08175S	20598	McKenzie River & Frtg Rd, Hwy 1 SB (Spores)	2	Lane	5	I-5	HWY 001	197.38	215	14036	Replace	\$13,624,800	Replace	\$12,659,356	Complete	Complete
059	08171N	---	Muddy Creek, Hwy 1 NB	2	Lane	5	I-5	HWY 001	200.50	215	14036	Replace	\$2,484,000	No Work	\$0	No Work	No Work
060	08171S	---	Muddy Creek, Hwy 1 SB	2	Lane	5	I-5	HWY 001	200.50	215	14036	Replace	\$2,484,000	No Work	\$0	No Work	No Work
065	08236N	---	Calapooia River, Hwy 1 NB	2	Linn	4	I-5	HWY 001	218.79	216	14037	Replace	\$2,944,800	No Work	\$0	No Work	No Work
066	08236S	---	Calapooia River, Hwy 1 SB	2	Linn	4	I-5	HWY 001	218.79	216	14037	Replace	\$2,944,800	No Work	\$0	No Work	No Work
067	08235N	---	Calapooia Oflow, Hwy 1 NB at MP 220.04	2	Linn	4	I-5	HWY 001	220.04	216	14037	Replace	\$3,532,800	Repair	\$266,618	Complete	Complete
068	08235S	---	Calapooia Oflow, Hwy 1 SB at MP 220.04	2	Linn	4	I-5	HWY 001	220.06	216	14037	Replace	\$3,532,800	Repair	\$267,542	Complete	Complete
069	08233S	20397	Sodom Ditch, Hwy 1 SB	2	Linn	4	I-5	HWY 001	221.13	216	14037	Replace	\$5,512,800	Replace	\$5,063,489	Complete	Complete
070	08233N	20396	Sodom Ditch, Hwy 1 NB	2	Linn	4	I-5	HWY 001	221.13	216	14037	Replace	\$5,512,800	Replace	\$5,056,415	Complete	Complete
158	01826	20155	Odell Creek, Hwy 18	2	Klamath	5	OR 58	HWY 018	67.95	217	14038	Replace	\$1,380,000	Replace	\$1,840,288	Complete	Complete
159	01825	20156	Crescent Creek, Hwy 18	4	Klamath	10	OR 58	HWY 018	73.40	217	14038	Replace	\$1,228,000	Replace	\$1,862,973	Complete	Complete
048	08445	---	Hwy 225 over Hwy 1	2	Lane	5	n/a	HWY 225	190.50	218	14039	Replace	\$7,252,000	No Work	\$0	No Work	No Work
150	05285A	---	Coast Fork Willamette River Relief Opening, Hwy 18	2	Lane	5	OR 58	HWY 018	1.96	218	14039	Replace	\$2,772,000	Repair	\$1,074,703	Complete	Complete
151	05286	---	Coast Fork Willamette River, Hwy 18	2	Lane	5	OR 58	HWY 018	2.46	218	14039	Replace	\$8,330,000	No Work	\$0	No Work	No Work
152	05287B	20395	Willamette River Relief Opening, Hwy 18	2	Lane	5	OR 58	HWY 018	2.71	218	14039	Repair	\$1,000,000	Replace	\$2,874,955	Complete	Complete
153	07110	20120	Hwy 18 over UPRR (Pleasant Hill)	2	Lane	5	OR 58	HWY 018	8.08	218	14039	Replace	\$8,840,000	Replace	\$10,076,999	Complete	Complete
154	06768	20360	Lost Creek, Hwy 18	2	Lane	5	OR 58	HWY 018	9.51	218	14039	Replace	\$2,428,000	Replace	\$4,537,185	Complete	Complete
155	07894	---	Willamette River, Hwy 18 (Barnard)	2	Lane	5	OR 58	HWY 018	33.24	218	14039	Replace	\$6,668,000	Repair	\$508,014	Complete	Complete
156	07171	20359	Hwy 18 over Private Logging Road	2	Lane	5	OR 58	HWY 018	37.09	218	14039	Replace	\$1,664,000	Replace	\$3,033,395	Complete	Complete
043	13514E	---	NE 102nd Ave over Hwy 2 Conns #2 & #3 & Hwy 64 Conns #1 & #2	1	Multnomah	2B	I-84	HWY 002	10.00	219	14257	Repair	\$3,281,400	No Work	\$51,058	No Work	No Work
050	08329	---	Willamette River & Hwy 15 & UPRR, Hwy 1 & Hwy 1W	2	Lane	5	I-5	HWY 001	192.75	220	14259	Replace	\$58,430,400	Replace	\$186,819,921	Underway	2010
160	07984	20394	Hwy 18 WB over Hwy 4 SB	4	Klamath	10	OR 58	HWY 018	86.30	221	14258	Repair	\$1,000,000	Replace	\$4,327,435	Complete	Complete
120	07392	---	Rock Creek, Hwy 2	4	Wasco	9	I-84	HWY 002	69.62	222	15182	Replace	\$3,668,000	Repair	\$588,004	Complete	Complete
122	08276	---	Hwy 2 over Hostetler Way Conn	4	Wasco	9	I-84	HWY 002	82.62	222	15182	Repair	\$1,073,000	Repair	\$545,906	Complete	Complete
119	07398	---	Hwy 2 over Conn 2	1	Hood River	9	I-84	HWY 002	64.44	224	15644	Replace	\$3,118,000	Replace	\$6,856,485	Complete	Underway
121	07393	---	Mosier Creek, Hwy 2	4	Wasco	9	I-84	HWY 002	70.10	225	15733	Replace	\$4,400,000	Replace	\$10,053,572	Complete	Underway
051	08182N	20061	Hwy 1 NB over UPRR (Abandoned) & Game Farm Rd	2	Lane	5	I-5	HWY 001	195.78	251	14197	Replace	\$7,339,200	Replace	\$8,936,353	Complete	Complete
052	08182S	20062	Hwy 1 SB over UPRR (Abandoned) & Game Farm Rd	2	Lane	5	I-5	HWY 001	195.78	251	14197	Replace	\$5,786,400	Replace	\$7,585,137	Complete	Complete
086	08124	---	Santiam Oflow No 4, Hwy 1 at MP 240.42	2	Linn	4	I-5	HWY 001	240.42	255	10352	Repair	\$1,022,400	Repair	\$215,279	Complete	Complete
087	08122	---	Santiam Oflow No 3, Hwy 1 SB at MP 241.12	2	Marion	4	I-5	HWY 001	241.12	255	10352	Repair	\$1,000,000	Repair	\$158,792	Complete	Complete
088	08121	---	Santiam Oflow No 2, Hwy 1 SB at MP 241.35	2	Marion	4	I-5	HWY 001	241.35	255	10352	Repair	\$1,345,200	Repair	\$265,095	Complete	Complete
141	09314	---	Hwy 54 over Hwy 6 (Stanfield Jct Intchg)	5	Umatilla	12	US 395	HWY 054	188.84	256	13429	Replace	\$8,086,000	Repair	\$971,805	Complete	Complete
079	07188	---	Half Viaduct, Hwy 18 at MP 55.98	2	Lane	5	OR 58	HWY 018	55.98	257	16035	Repair	\$1,000,000	Replace	\$1,473,759	Underway	2012
157	08221B	---	Hwy 1 NB over Hwy 58 NB (North Albany Intchg)	2	Linn	4	I-5	HWY 001	234.16	A07	13542	Replace	\$3,897,600	Repair	\$434,688	Complete	Complete
080	08221D	---	Hwy 1 SB over Hwy 58 NB (North Albany Intchg)	2	Linn	4	I-5	HWY 001	234.16	A07	13542	Replace	\$3,612,000	Repair	\$452,735	Complete	Complete
081	08221A	---	Hwy 1 NB over Knox Butte Rd (North Albany Intchg)	2	Linn	4	I-5	HWY 001	234.23	A07	13542	Repair	\$1,000,000	Repair	\$334,538	Complete	Complete
082	08221C	---	Hwy 1 SB over Knox Butte Rd (North Albany Intchg)	2	Linn	4	I-5	HWY 001	234.23	A07	13542	Replace	\$2,707,200	Repair	\$415,977	Complete	Complete
161	08221E	---	Hwy 58 NB Conn to Hwy 1 NB over Knox Butte Rd (N Albany Int)	2	Linn	4	OR 99E	HWY 058	234.23	A07	13542	Replace	\$2,900,000	Repair	\$347,159	Complete	Complete

SUB-TOTALS

\$500,207,600

\$551,179,953

Stage 3

Project Identification Data

General Project Data

Scope & Budget

Status

Unique ID	Original Bridge Number	New Bridge Number	Project Name	Region	County	District	Route	Highway	MP	Construction Bundle Number	Key Number	Original Scope	Original Budget	Current Scope	Current Budget	Design Status	Const. Status
162	09184	20673	Hwy 1 over Neil Creek Rd	3	Jackson	8	I-5	HWY 001	10.34	301	14040	Repair	\$1,047,000	Replace	\$5,948,874	Complete	Complete
164	08742N	20675	Bear Creek, Hwy 1 NB at MP 14.96	3	Jackson	8	I-5	HWY 001	14.96	301	14040	Replace	\$3,958,000	Replace	\$4,917,451	Complete	Complete
165	08742S	20674	Bear Creek, Hwy 1 SB at MP 14.96	3	Jackson	8	I-5	HWY 001	14.96	301	14040	Replace	\$4,749,600	Replace	\$5,029,380	Complete	Complete
166	08738N	20677	Hwy 1 NB over Eagle Mill Rd	3	Jackson	8	I-5	HWY 001	17.29	301	14040	Replace	\$3,210,000	Replace	\$4,088,243	Complete	Complete
167	08738S	20676	Hwy 1 SB over Eagle Mill Rd	3	Jackson	8	I-5	HWY 001	17.29	301	14040	Replace	\$3,934,000	Replace	\$4,438,880	Complete	Complete
169	08542	---	Central Point Rd Conn #2 (East Pine St) over Hwy 1	3	Jackson	8	CENTRAL PT RD CON2		32.75	302	14041	Replace	\$5,598,000	No Work	\$197,000	No Work	No Work
170	08540A	20557	Upton Rd over Hwy 1	3	Jackson	8	UPTON RD		33.85	302	14041	Repair	\$1,000,000	Replace	\$4,548,801	Complete	Complete
174	07773A	20559	Hwy 1 over Foley Lane Frontage Rd	3	Jackson	8	I-5	HWY 001	38.73	302	14041	Replace	\$2,973,600	Replace	\$6,846,411	Complete	Complete
180	08375	---	Creek & County Rd + CORP, Hwy 1 at MP 49.46	3	Jackson	8	I-5	HWY 001	49.46	302	14041	Replace	\$18,904,000	Repair	\$467,276	Complete	Complete
181	08335N	---	Hwy 1 NB over Foothill Blvd	3	Josephine	8	I-5	HWY 001	54.10	303	14042	Replace	\$5,892,000	Repair	\$713,309	Complete	Complete
182	08335S	---	Hwy 1 SB over Foothill Blvd	3	Josephine	8	I-5	HWY 001	54.10	303	14042	Replace	\$4,910,000	Repair	\$698,640	Complete	Complete
183	08333	---	Hwy 1 over Foothill Blvd	3	Josephine	8	I-5	HWY 001	55.40	303	14042	Replace	\$6,808,800	Repair	\$253,242	Complete	Complete
185	08339	20459/60	Hwy 1 over Beacon Dr	3	Josephine	8	I-5	HWY 001	57.06	303	14042	Replace	\$6,630,000	Replace	\$9,315,713	Complete	Complete
186	08501	---	Hwy 1 over Hwy 25 NB	3	Josephine	8	I-5	HWY 001	58.06	303	14042	Repair	\$1,387,800	No Work	\$0	No Work	No Work
187	08500	---	Hwy 1 over Scoville Rd	3	Josephine	8	I-5	HWY 001	58.18	303	14042	Repair	\$1,587,000	No Work	\$0	No Work	No Work
190	08094N	---	Jumpoff Joe Creek, Hwy 1 NB	3	Josephine	8	I-5	HWY 001	65.74	303	14042	Replace	\$4,022,000	Repair	\$324,499	Complete	Complete
191	08094S	---	Jumpoff Joe Creek, Hwy 1 SB	3	Josephine	8	I-5	HWY 001	65.74	303	14042	Replace	\$4,022,000	Repair	\$294,085	Complete	Complete
192	09439	---	Hwy 1 NB & Conn over Sunny Valley Rd	3	Josephine	8	I-5	HWY 001	71.39	303	14042	Replace	\$2,680,000	No Work	\$0	No Work	No Work
193	09439A	---	Hwy 1 SB & Conn over Sunny Valley Rd	3	Josephine	8	I-5	HWY 001	71.39	303	14042	Replace	\$3,216,000	No Work	\$0	No Work	No Work
195	09440	---	Hwy 1 NB over Leland Rd	3	Josephine	8	I-5	HWY 001	71.93	303	14042	Replace	\$2,660,000	No Work	\$0	No Work	No Work
196	09440A	---	Hwy 1 SB over Leland Rd	3	Josephine	8	I-5	HWY 001	71.93	303	14042	Replace	\$2,756,000	No Work	\$0	No Work	No Work
197	09339	---	Hwy 1 over S Wolf Creek Conn	3	Josephine	8	I-5	HWY 001	76.03	303							

Stage 3

Project Identification Data

General Project Data

Scope & Budget

Status

Unique ID	Original Bridge Number	New Bridge Number	Project Name
253	07825	20370	Saginaw Road over Hwy 1
254	07793A	---	Brown Creek, Hwy 1 NB
255	07793B	20376	Brown Creek, Hwy 1 SB
264	07736A	---	Camas Swale, Hwy 1 NB
265	07736C	20377	Camas Swale, Hwy 1 SB
175	07601B	---	Hwy 271 Spur over Hwy 1 (S Gold Hill)
176	08383N	---	Hwy 1 NB over Hwy 60
177	08383S	---	Hwy 1 SB over Hwy 60
178	08381N	---	Rogue River, Hwy 1 NB (Homestead)
179	08381S	---	Rogue River, Hwy 1 SB (Homestead)
168	08693	---	Valley View Rd Conn #1 over Hwy 1 (N Ashland Intchg)
198	09352A	---	Hwy 1 SB & Conn over Conn (Glendale Intchg)
199	07364A	20477	Hwy 1 & Conn over 5th St (Canyonville)
163	08745	---	Hwy 21 over Hwy 1 (Greensprings Exit 14)
194	06493A	19627	Grave Creek, Hwy 1 NB
214	07713A	19739	South Umpqua River & CORP, Hwy 1 SB (Shady)
221	07631	20213	Hwy 1 NB over CORP & County Rd
222	07631A	20212	Hwy 1 SB over CORP & County Rd
223	07627B	---	Hwy 1 NB over Rogers Rd Conn
224	07627A	---	Hwy 1 SB over Rogers Rd Conn
225	07563A	20239	Calapooya Creek, Hwy 1
200	08028N	20093	Hwy 1 NB over Irwin Access Conn
201	08028S	20094	Hwy 1 SB over Irwin Access Conn
220	07632	20571	Del Rio Rd over Hwy 1 (Winchester)
230	07636A	---	Hwy 1 over Elkhead Rd
232	07572A	---	Curtis Creek, Hwy 1
234	07469B	---	Bear Creek, Hwy 1 at MP 163.43
209	07839	---	Hwy 1 SB over Clarks Branch Rd Conn #2
210	07835	20422	Roberts Creek Rd, Hwy 1 NB
211	07835A	20389	Roberts Creek Rd, Hwy 1 SB
212	07806	20333	Hwy 35 over Hwy 1
213	07804N	---	Hwy 1 over Speedway Rd
256	07757B	20421	Gettings Creek, Hwy 1 NB
257	07757A	20335	Gettings Creek, Hwy 1 SB
258	07756A	20336	Coast Fork Relief Opening, Hwy 1 SB
259	07745A	20242	Coast Fork Willamette River, Hwy 1 NB (A)
260	07743A	20413	Tunnel Mill Race, Hwy 1 SB
241	07860	20039	London Rd over Hwy 1
242	07865A	---	Hwy 1 over Taylor Ave
243	07864A	---	Hwy 1 over 16th Street (Landess Rd)
244	07863A	20040	Hwy 1 NB over Whiteaker Ave
245	07863	20041	Hwy 1 SB over Whiteaker Ave
246	07830	---	Hwy 1 SB over OP&ERR (Abandoned)
171	08539	20020	Hwy 63 over Hwy 1 (Seven Oaks Intchg)
172	07777B	20022	Hwy 1 NB over COR (Seven Oaks)
173	07777	20021	Hwy 1 SB over COR (Seven Oaks)
249	07829A	19850	Row River, Hwy 1 NB
250	07871A	19851	Row River Oflow, Hwy 1 NB
251	07871B	19849	Row River Oflow, Hwy 1 SB
261	07740C	---	Hill Creek, Hwy 1 NB
262	07740A	---	Hill Creek, Hwy 1 SB
263	07739A	20104	Hwy 222 over Hwy 1 (Creswell)

Region	County	District	Route	Highway	MP	Construction Bundle Number	Key Number
2	Lane	5	SAGINAW CO RD		176.76	312	14053
2	Lane	5	I-5	HWY 001	177.89	312	14053
2	Lane	5	I-5	HWY 001	177.89	312	14053
2	Lane	5	I-5	HWY 001	185.46	312	14053
2	Lane	5	I-5	HWY 001	185.46	312	14053
3	Jackson	8	OR 99	HWY 271	40.83	313	14260
3	Jackson	8	I-5	HWY 001	45.47	313	14260
3	Jackson	8	I-5	HWY 001	45.47	313	14260
3	Jackson	8	I-5	HWY 001	45.61	313	14260
3	Jackson	8	I-5	HWY 001	45.61	313	14260
3	Jackson	8	VALLEY VIEW RD CON		19.17	314	14641
3	Douglas	7	I-5	HWY 001	80.80	315	14642
3	Douglas	7	I-5	HWY 001	98.28	315	14642
3	Jackson	8	OR 66	HWY 021	14.17	316	16956
3	Josephine	8	I-5	HWY 001	71.72	351	12365
3	Douglas	7	I-5	HWY 001	120.57	352	12401
3	Douglas	7	I-5	HWY 001	130.46	353	13467
3	Douglas	7	I-5	HWY 001	130.46	353	13467
3	Douglas	7	I-5	HWY 001	133.25	353	13467
3	Douglas	7	I-5	HWY 001	133.25	353	13467
3	Douglas	7	I-5	HWY 001	138.71	353	13467
3	Douglas	7	I-5	HWY 001	99.53	355	12707
3	Douglas	7	I-5	HWY 001	99.53	355	12707
3	Douglas	7	I-5	HWY 001	129.22	357	15186
3	Douglas	7	I-5	HWY 001	154.54	508	15228
3	Douglas	7	I-5	HWY 001	156.49	508	15228
3	Douglas	7	I-5	HWY 001	163.43	508	15228
3	Douglas	7	I-5	HWY 001	113.44	A02	13711
3	Douglas	7	I-5	HWY 001	117.74	A02	13711
3	Douglas	7	I-5	HWY 001	117.74	A02	13711
3	Douglas	7	OR 42	HWY 035	76.65	A02	13711
3	Douglas	7	I-5	HWY 001	120.03	A02	13711
2	Lane	5	I-5	HWY 001	178.40	A02	13711
2	Lane	5	I-5	HWY 001	178.40	A02	13711
2	Lane	5	I-5	HWY 001	179.64	A02	13711
2	Lane	5	I-5	HWY 001	179.99	A02	13711
2	Lane	5	I-5	HWY 001	180.49	A02	13711
2	Lane	5	LONDON RD		172.24	A04	13539
2	Lane	5	I-5	HWY 001	173.40	A04	13539
2	Lane	5	I-5	HWY 001	173.84	A04	13539
2	Lane	5	I-5	HWY 001	174.24	A04	13539
2	Lane	5	I-5	HWY 001	174.24	A04	13539
2	Lane	5	I-5	HWY 001	174.41	A04	13539
3	Jackson	8	OR 99	HWY 063	35.62	A06	13541
3	Jackson	8	I-5	HWY 001	36.09	A06	13541
3	Jackson	8	I-5	HWY 001	36.09	A06	13541
2	Lane	5	I-5	HWY 001	175.40	A08	12357
2	Lane	5	I-5	HWY 001	175.60	A08	12357
2	Lane	5	I-5	HWY 001	175.60	A08	12357
2	Lane	5	I-5	HWY 001	182.63	A11	13543
2	Lane	5	I-5	HWY 001	182.63	A11	13543
2	Lane	5	n/a	HWY 222	14.59	A11	13543

Original Scope	Original Budget	Current Scope	Current Budget	Design Status	Const. Status
Replace	\$2,150,000	Replace	\$8,372,201	Complete	Underway
Repair	\$1,000,000	No Work	\$0	No Work	No Work
Replace	\$1,718,400	Replace	\$3,449,453	Complete	Underway
Replace	\$3,580,800	No Work	\$119,268	No Work	No Work
Repair	\$1,000,000	Replace	\$4,256,181	Complete	Complete
Repair	\$1,000,000	Repair	\$394,467	Complete	Complete
Replace	\$6,237,600	Repair	\$587,818	Complete	Complete
Replace	\$4,857,600	Repair	\$922,724	Complete	Complete
Replace	\$12,134,400	Repair	\$2,698,853	Complete	Complete
Replace	\$12,816,000	Repair	\$1,352,141	Complete	Complete
Replace	\$4,464,200	Replace	\$12,177,000	Underway	2010
Replace	\$3,866,400	Repair	\$653,966	Complete	Complete
Replace	\$2,925,600	Replace	\$9,074,290	Complete	Complete
Repair	\$2,059,200	Repair	\$16,296,000	Underway	2010
Replace	\$4,378,000	Replace	\$2,749,399	Complete	Complete
Replace	\$12,884,000	Replace	\$13,588,000	Complete	Underway
Replace	\$3,638,000	Replace	\$3,307,000	Complete	Complete
Repair	\$1,344,000	Replace	\$956,000	Complete	Complete
Replace	\$1,558,000	Repair	\$2,588,000	Complete	Complete
Replace	\$1,982,000	Repair	\$884,000	Complete	Complete
Replace	\$8,563,200	Replace	\$6,099,000	Complete	Complete
Replace	\$2,791,200	Replace	\$3,491,197	Complete	Complete
Replace	\$2,791,200	Replace	\$3,304,572	Complete	Complete
Replace	\$1,992,000	Replace	\$28,473,000	Underway	2011
Repair	\$1,000,000	Replace	\$8,012,024	Underway	Underway
Replace	\$2,590,000	Repair	\$6,161,049	Underway	Underway
Replace	\$4,750,000	Replace	\$9,684,515	Underway	Underway
Replace	\$2,342,000	Repair	\$668,240	Complete	Complete
Replace	\$3,536,000	Replace	\$3,382,331	Complete	Complete
Replace	\$4,243,200	Replace	\$4,411,931	Complete	Complete
Replace	\$3,942,000	Replace	\$5,154,528	Complete	Complete
Replace	\$2,236,800	No Work	\$954,550	No Work	No Work
Replace	\$4,963,200	Replace	\$4,277,992	Complete	Complete
Replace	\$4,963,200	Replace	\$4,848,203	Complete	Complete
Repair	\$1,000,000	Replace	\$2,650,489	Complete	Complete
Replace	\$7,742,000	Replace	\$8,094,418	Complete	Complete
Replace	\$1,144,800	Replace	\$2,665,222	Complete	Complete
Replace	\$4,806,000	Replace	\$6,583,757	Complete	Complete
Replace	\$3,046,000	Repair	\$481,836	Complete	Complete
Replace	\$2,820,000	Repair	\$478,785	Complete	Complete
Replace	\$3,406,000	Replace	\$3,379,776	Complete	Complete
Replace	\$3,432,000	Replace	\$3,279,317	Complete	Complete
Replace	\$1,982,000	No Work	\$16,693	No Work	No Work
Replace	\$6,247,200	Replace	\$10,317,724	Complete	Underway
Replace	\$6,424,800	Replace	\$8,803,112	Complete	Underway
Replace	\$6,074,400	Replace	\$8,535,581	Complete	Underway
Replace	\$4,860,000	Replace	\$1,902,836	Complete	Complete
Replace	\$3,090,000	Replace	\$2,053,211	Complete	Complete
Replace	\$3,090,000	Replace	\$1,996,763	Complete	Complete
Replace	\$1,773,600	Repair	\$273,061	Complete	Complete
Replace	\$1,396,800	Repair	\$304,119	Complete	Complete
Replace	\$3,496,800	Replace	\$7,601,411	Complete	Complete

SUB-TOTALS

\$481,884,800

\$408,985,525

Stage 4

Project Identification Data

General Project Data

Scope & Budget

Status

Unique ID	Original Bridge Number	New Bridge Number	Project Name
341	08893	---	Spanish Hollow Creek, Hwy 42 at MP 2.37
342	08894	---	Spanish Hollow Creek, Hwy 42 at MP 2.48
278	12205B	---	Calapooya River, Hwy 210
279	09413	---	Calapooya Oflow, Hwy 210 at MP 5.85
280	09414	---	Calapooya Oflow, Hwy 210 at MP 5.91
302	00805C	---	Lower Lookingglass Creek, Hwy 35
303	01923	---	South Umpqua River, Hwy 35 EB (Winston)
267	07715	---	Hwy 2W over Swedetown County Rd
287	08281	---	Hwy 35 over Hwy 9 NB
288	03172A	---	Hwy 35 over COR
290	03173B	---	Beaver Creek, Hwy 35 WB
300	00588C	---	Tenmile Creek, Hwy 35
306	04821A	---	Grande Ronde River, Hwy 10 at MP 2.64 (Island City)
309	01996	---	Grande Ronde River, Hwy 10 at MP 20.62 (Northeast Elgin)
312	02184	---	Wallowa River, Hwy 10 (Bear Creek)
313	07573	---	Lostine River, Hwy 10
323	08617	---	Hwy 33 over WPRR
335	03553A	---	Beech Creek, Hwy 28 at MP 110.20
338	05225A	---	Cow Creek, Hwy 456
282	01614	20582	Elk Creek, Hwy 45 at MP 36.39
283	01601	20583	Elk Creek, Hwy 45 at MP 38.76
284	01465	20584	Elk Creek, Hwy 45 at MP 39.64
285	01406	20585	Elk Creek, Hwy 45 at MP 39.97
286	01424	20586	Hardscrabble Creek, Hwy 45
277	03913	20767	Cattlepass, Hwy 19 at MP 102.40
328	03915	20768	Crooked Creek, Hwy 19 at MP 126.92
289	03173A	---	Beaver Creek, Hwy 35 EB
291	08842	---	Middle Fork Coquille River, Hwy 35 at MP 23.37
292	08843	---	Hwy 35 over Hwy 242
293	08830	---	Middle Fork Coquille River, Hwy 35 at MP 24.32
294	08875	---	Middle Fork Coquille River, Hwy 35 at MP 25.52
295	08876	---	Middle Fork Coquille River, Hwy 35 at MP 25.67
296	03212A	---	Endicot Creek, Hwy 35
297	08936	---	Middle Fork Coquille River, Hwy 35 at MP 30.10
298	08935	---	Middle Fork Coquille River, Hwy 35 at MP 30.59
299	00559B	---	Middle Fork Coquille River, Hwy 35 at MP 53.17
320	00866B	---	Marys River & WPRR, Hwy 33 at MP 39.34
321	01205A	---	Hwy 33 over Harris Rd & WPRR (Wren Conn)
322	01075A	---	Marys River, Hwy 33 at MP 48.88 (Noon)
324	08616	---	Hwy 33 EB over Hwy 1W SB
275	02655	20872	John Day River, Hwy 5 (Goose Rock)
276	02734A	---	Rock Creek, Hwy 5 (Picture Gorge)
325	07696	20870	John Day River, Hwy 5 (Coles)
329	08050	20869	McKay Creek, Hwy 28
330	02561	---	East Fork Birch Creek, Hwy 28 (Pilot Rock)
331	04728	20871	Camas Creek, Hwy 28
332	04729	20873	North Fork John Day River, Hwy 28 (Dale)
337	03596	20867	Trout Creek Oflow, Hwy 48 at MP 42.95

Stage 4

Project Identification Data

General Project Data

Scope & Budget

Status

Unique ID	Original Bridge Number	New Bridge Number	Project Name	Region	County	District	Route	Highway	MP	Construction Bundle Number	Key Number	Original Scope	Original Budget	Current Scope	Current Budget	Design Status	Const. Status
266	07722	---	Lost Creek, Hwy 2W	1	Columbia	2A	US 30	HWY 02W	55.29	415	14609	Replace	\$1,296,000	Repair	\$402,688	Complete	Underway
269	09591	---	Lewis & Clark Br Conn over Hwy 2W	1	Columbia	2A	LONGVIEW BR CONN		48.36	415	14609	Replace	\$4,852,000	No Work	\$35,000	No Work	No Work
326	00921	---	Gnat Creek, Hwy 2W	2	Clatsop	1	US 30	HWY 02W	77.25	415	14609	Replace	\$2,162,000	Repair	\$1,731,782	Complete	Underway
327	07417	---	Big Creek, Hwy 2W	2	Clatsop	1	US 30	HWY 02W	82.52	415	14609	Replace	\$2,830,000	Repair	\$1,092,444	Complete	Underway
270	02235	---	Mule Shoe Creek, Hwy 5	4	Wheeler	12	OR 19	HWY 005	79.03	426	15815	Replace	\$768,000	Repair	\$854,283	Underway	2010
271	02236A	---	Alder Creek, Hwy 5	4	Wheeler	12	OR 19	HWY 005	80.92	426	15815	Replace	\$1,332,000	Repair	\$1,436,656	Underway	2010
272	04979A	---	Juniper Creek, Hwy 5	4	Wheeler	12	OR 19	HWY 005	81.85	426	15815	Replace	\$1,126,000	Repair	\$1,295,823	Underway	2010
273	04981A	---	Mathas Creek, Hwy 5	4	Wheeler	12	OR 19	HWY 005	84.53	426	15815	Replace	\$856,000	Repair	\$771,380	Underway	2010
274	02233A	---	Harper Creek, Hwy 5	4	Wheeler	12	OR 19	HWY 005	85.17	426	15815	Replace	\$880,000	Repair	\$951,413	Underway	2010
336	03558A	---	Canyon Creek, Hwy 48	5	Grant	14	US 395	HWY 048	7.25	427	16907	Replace	\$864,000	Repair	\$774,824	Underway	2010
314	07530	---	Beaver Creek, Hwy 33 at MP 3.23	2	Lincoln	4	US 20	HWY 033	3.23	428	16957	Repair	\$1,000,000	Repair	\$3,072,855	Underway	2010
315	07532	---	Beaver Creek, Hwy 33 at MP 4.19	2	Lincoln	4	US 20	HWY 033	4.19	428	16957	Repair	\$1,000,000	Repair	\$2,912,857	Underway	2010
316	07533	---	Beaver Creek, Hwy 33 at MP 4.47	2	Lincoln	4	US 20	HWY 033	4.47	428	16957	Repair	\$1,000,000	Repair	\$2,890,857	Underway	2010
317	07534	---	Little Beaver Creek, Hwy 33	2	Lincoln	4	US 20	HWY 033	5.36	428	16957	Repair	\$1,000,000	Repair	\$3,007,857	Underway	2010
281	01697	---	Paradise Creek, Hwy 45	3	Douglas	7	OR 38	HWY 045	28.28	450	13312	Replace	\$2,548,000	No Work	\$0	No Work	No Work
301	00587C	---	Olalla Creek, Hwy 35 (Upper Lookingglass)	3	Douglas	7	OR 42	HWY 035	67.61	451	13312	Replace	\$2,340,000	No Work	\$0	No Work	No Work
319	00683	---	Yaquina River, Hwy 33	2	Lincoln	4	US 20	HWY 033	23.38	452	14194	Replace	\$2,446,000	No Work	\$25,232	No Work	No Work
339	00815A	---	Trout Creek, Hwy 4	4	Jefferson	10	US 97	HWY 004	75.04	453	14149	Repair	\$1,000,000	No Work	\$51,343	No Work	No Work
340	08600	20429	Irrigation Canal, Hwy 4 at MP 90.11	4	Jefferson	10	US 97	HWY 004	90.11	453	14149	Replace	\$796,000	Replace	\$916,200	Complete	Complete
318	00654	20238	Hayes Creek, Hwy 33	2	Lincoln	4	US 20	HWY 033	21.01	454	13225	Replace	\$1,202,000	Replace	\$2,140,220	Complete	Complete
304	07316	20720	Powder River, Hwy 71 at MP 41.66 (Rancheria)	5	Baker	13	OR 7	HWY 071	41.19	457	14227	Replace	\$1,060,000	Replace	\$2,141,935	Complete	Underway
305	07431	---	Powder River, Hwy 71 at MP 42.77 (Salisbury)	5	Baker	13	OR 7	HWY 071	42.31	457	14227	Replace	\$1,010,000	Replace	\$2,571,508	Complete	Underway
268	07519	---	Clatskanie River, Hwy 2W	1	Columbia	2A	US 30	HWY 02W	61.21	459	15530	Replace	\$3,556,000	No Work	\$55,000	No Work	No Work
308	00800A	---	Grande Ronde River, Hwy 10 at MP 19.20 (South Elgin)	5	Union	13	OR 82	HWY 010	19.20	460	14228	Replace	\$3,844,000	No Work	\$19,000	No Work	No Work
310	05192	---	Minam Viaduct, Hwy 10	5	Union	13	OR 82	HWY 010	31.15	460	14228	Replace	\$2,704,000	Replace	\$5,806,000	Underway	2010
311	01038A	---	Wallowa River, Hwy 10 (Minam)	5	Wallowa	13	OR 82	HWY 010	33.65	460	14228	Replace	\$4,652,000	Repair	\$571,000	Underway	2010
333	06204	---	Smith Creek, Hwy 28	5	Grant	14	US 395	HWY 028	98.31	461	16657	Replace	\$412,000	No Work	\$351,057	No Work	No Work
334	06205	---	Fox Creek, Hwy 28	5	Grant	14	US 395	HWY 028	99.13	461	16657	Replace	\$470,000	Repair	\$452,742	Complete	Complete
307	08780	---	Grande Ronde River & INP RR, Hwy 10 (Indian Creek)	5	Union	13	OR 82	HWY 010	17.88	462	16958	Replace	\$4,032,000	Replace	\$9,309,000	Underway	2010

SUB-TOTALS

\$193,948,400

\$163,747,684

Stage 5

Project Identification Data

General Project Data

Scope & Budget

Status

Unique ID	Original Bridge Number	New Bridge Number	Project Name	Region	County	District	Route	Highway	MP	Construction Bundle Number	Key Number	Original Scope	Original Budget	Current Scope	Current Budget	Design Status	Const. Status
363	03522A	20868	Silvies Slough, Hwy 442 at MP 0.69	5	Harney	14	OR 78	HWY 442	0.69	414	14610	Replace	\$606,000	Replace	\$2,553,021	Underway	Underway
368	02463	---	Indian Creek, Hwy 5	5	Grant	14	US 26	HWY 005	170.49	414	14610	Replace	\$892,000	No Work	\$0	No Work	No Work
346	00338A	---	Tide Creek, Hwy 2W	1	Columbia	2A	US 30	HWY 02W	36.47	415	14609	Replace	\$4,588,000	Repair	\$437,044	Complete	Underway
369	02464	---	John Day R (Prairie City), Hwy 5	5	Grant	14	US 26	HWY 005	170.62	427	16907	Replace	\$1,840,000	Repair	\$1,116,905	Underway	2010
370	02466	---	Dixie Creek, Hwy 5 (Prairie City)	5	Grant	14	US 26	HWY 005	174.96	427	16907	Replace	\$1,106,000	Repair	\$794,234	Underway	2010
358	04841A	---	Grande Ronde River, Hwy 341 (Hilgard)	5	Union	12	OR 244	HWY 341	46.75	460	14228	Repair	\$1,000,000	No Work	\$29,000	No Work	No Work
348	01516	---	Eugene Water Board Canal, Hwy 15 at MP 13.06 (Walterville)	2	Lane	5	OR 126	HWY 015	13.06	506	15227	Repair	\$1,209,000	No Work	\$74,172	No Work	No Work
347	02262	---	Hwy 69 over COR (Oakhill)	2	Lane	5	n/a	HWY 069	0.60	508	15228	Replace	\$9,458,000	Replace	\$11,988,976	Underway	Underway
351	08370	---	Knowles Creek, Hwy 62 at MP 18.47	2	Lane	5	OR 126	HWY 062	18.47	508	15228	Replace	\$2,818,000	Replace	\$7,238,364	Underway	Underway
352	08446	---	Siuslaw River, Hwy 62	2	Lane	5	OR 126	HWY 062	26.48	508	15228	Replace	\$3,176,000	Replace	\$9,616,900	Underway	Underway
353	08554	---	Wildcat Creek, Hwy 62 at MP 27.66	2	Lane	5	OR 126	HWY 062	27.66	508	15228	Repair	\$1,000,000	Repair	\$733,106	Underway	Underway
343	04041	---	Bear Creek, Hwy 200	2	Lane	5	n/a	HWY 200	6.60	509	15328	Repair	\$1,000,000	Replace	\$5,643,000	Underway	2010
344	04056	---	Hayes Creek, Hwy 200	2	Lane	5	n/a	HWY 200	29.78	509	15328	Replace	\$400,000	Replace	\$2,738,000	Underway	2010
345	04062	---	South Fork Siuslaw River, Hwy 200	2	Lane	5	n/a	HWY 200	40.43	509	15328	Replace	\$1,128,000	Replace	\$4,680,000	Underway	2010
349	01324A	---	Gate Creek, Hwy 15 (Vida)	2	Lane	5	OR 126	HWY 015	26.52	509	15328	Repair	\$1,000,000	No Work	\$0	No Work	No Work
350	01323A	---	Blue River Bridge, Hwy 15	2	Lane	5	OR 126	HWY 015	40.70	509	15328	Replace	\$3,050,000	No Work	\$0	No Work	No Work
359	01868	---	Wilson River, Hwy 37 at MP 5.78 (Mills)	2	Tillamook	1	OR 6	HWY 037	5.78	510	16301	Replace	\$4,428,000	Repair	\$7,530,000	Underway	2010
362	02472	---	Devils Lake Fork Wilson River, Hwy 37 at MP 32.05	1	Tillamook	2A	OR 6	HWY 037	32.05	510	16301	Replace	\$9,182,000	Repair	\$11,208,000	Underway	2010
379	02366	---	East Fork Dairy Creek, Hwy 47 WB	1	Washington	2A	US 26	HWY 047	54.55	511	16302	Replace	\$2,288,000	Replace	\$3,221,320	Underway	2010
381	02365	---	McKay Creek, Hwy 47 WB	1	Washington	2A	US 26	HWY 047	57.85	511	16302	Replace	\$2,390,000	Replace	\$3,952,465	Underway	2010
383	09254D	---	Hwy 47 EB Conn to SW Market St over Hwy 61	1	Multnomah	2A	US 26	HWY 047	73.94	511	16302	Repair	\$1,000,000	No Work	\$0	No Work	No Work
360	01869A	---	Wilson River, Hwy 37 at MP 11.80	2	Tillamook	1	OR 6	HWY 037	11.80	512	16398	Replace	\$4,166,000	Repair	\$888,000	Complete	Underway
361	01872A	---	Jordan Creek, Hwy 37	2	Tillamook	1	OR 6	HWY 037	18.03	512	16398	Replace	\$2,672,000	Repair	\$477,000	Complete	Underway
380	02367	---	Hwy 47 WB over PNWR (Vadis)	1	Washington	2A	US 26	HWY 047	55.73	512	16398	Replace	\$8,608,000	Repair	\$1,237,000	Complete	Underway
366	01074A	---	Elk Creek, Hwy 25	3	Josephine	8	US 199	HWY 025	40.24	552	13313	Repair	\$1,000,000	No Work	\$0	No Work	No Work
384	01950	---	Hwy 9 over COR (North Bend)	3	Coos	7	US 101	HWY 009	234.76	553	14509	Repair	\$1,713,600	No Work	\$12,055	No Work	No Work
382	02285	19199	Hwy 47 over Hwy 29 WB (SW Canyon Rd), (Sylvan)	1	Washington	2A	US 26	HWY 047	70.83	556	13069	Replace	\$6,204,000	Replace	\$7,092,097	Complete	Complete
364	01108A	19709	West Fork Illinois River, Hwy 25 at MP 32.10	3	Josephine	8	US 199	HWY 025	32.10	557	11816	Replace	\$4,218,000	Replace	\$5,001,272	Complete	Complete
365	01107A	19708	Rough and Ready Creek, Hwy 25	3	Josephine	8	US 199	HWY 025	34.28	557	11816	Replace	\$2,206,000	Replace	\$3,124,143	Complete	Complete
371	02585A	---	Kern Creek, Hwy 5	5	Malheur	14	US 26	HWY 005	265.33	558	14232	Replace	\$400,000	Replace	\$621,863	Complete	Complete
372	02586A	---	Lancaster Creek, Hwy 5	5	Malheur	14	US 26	HWY 005	266.39	558	14232	Replace	\$400,000	Replace	\$570,012	Complete	Complete
367	01706	---	Soda Fork, Hwy 16	2	Linn	4	US 20	HWY 016	52.44	559	14235	Replace	\$2,578,000	No Work	\$6,000	No Work	No Work
354	02496	---	North Umpqua River, Hwy 138 at MP 17.86 (Lone Rock)	3	Douglas	7	OR 138	HWY 138	17.95	560	14608	Replace	\$5,958,000	Repair	\$1,527,000	Underway	2010
355	07904	---	Rock Creek, Hwy 138	3	Douglas	7	OR 138	HWY 138	22.30	560	14608	Replace	\$2,400,000	Repair	\$1,385,000	Underway	2010
356	16861	---	Rough Creek, Hwy 138 (Penstock)	3	Douglas	8	OR 138	HWY 138	56.83	560	14608	Repair	\$1,000,000	Repair	\$658,000	Underway	2010
357	03461	---	Rogue River, Hwy 233	3	Jackson	8	OR 230	HWY 233	5.16	560	14608	Replace	\$3,448,000	Repair	\$4,413,000	Underway	2010
373	02201	20649	Ochoco Creek, Hwy 41	4	Crook	10	US 26	HWY 041	19.40	A05	13540	Replace	\$1,078,000	Replace	\$4,841,607	Complete	Complete
374	02553	20326	Marks Creek, Hwy 41 at MP 33.99	4	Crook	10	US 26	HWY 041	34.10	A05	13540	Replace	\$936,000	Replace	\$2,479,702	Complete	Complete
375	07649	20327	Marks Creek, Hwy 41 at MP 37.44	4	Crook	10	US 26	HWY 041	37.44	A05	13540	Replace	\$936,000	Replace	\$2,375,919	Complete	Complete
376	07372	---	Bridge Creek, Hwy 41 at MP 62.54	4	Wheeler	10	US 26	HWY 041	62.54	A05	13540	Repair	\$1,000,000	No Work	\$27,312	No Work	No Work

Source: OBDP Bridge Reporting System (BRS)

Updated through November, 2009 Month End

Const. Bundle Number	Construction Management By	Key Number	Construction Bundle Name	OTIA III Funded No. of Bridges	Approved No Work Bridges	Repair /Replace Bridges	ODOT Regions	County	Planned A&E Award or Design k/o	Planned Construction Let Date or Design k/o	
101	OBDP	13563	Mt. Hood to Chemult (D/B) - Bundle 101	10		10	1,4	Clackamas, Deschutes, Jefferson, Klamath	Apr-04	Apr-04	
102	ODOT	13208	Central Oregon Bridges (D/B) - Bundle 102	3		3	5	Harney, Malheur	Mar-04	Mar-04	
103	OBDP	13213	US 97: Nevada Avenue to Green Springs Dr. - Bundle 103	3		1	2	4	Klamath	Aug-03	Aug-04
105	ODOT	12171	Zig Zag River - Bundle 105	1		1	1	Clackamas	Oct-02	Nov-03	
152	ODOT	13585	Spring Creek to Shady Pine Road - Bundle 152	4		1	3	4	Klamath	Oct-03	Nov-04
154	ODOT	13573	Willow Creek - Bundle 154	1		1	4	Jefferson	Apr-04	Dec-04	
A02	OBDP	13711	I-5:Clarks Branch to Tunnel Mill Race D/B-Bundle A02	10	1	1	8	2,3	Douglas, Lane	Mar-05	Mar-05
A04	OBDP	13539	I-5: Whiteaker Ave - London Rd - Bundle A04	6	1	2	3	2	Lane	Sep-05	Jun-07
A05	ODOT	13540	US26: Ochoco Creek - Bridge Creek - Bundle A05	4	1	3	4	Crook, Wheeler	Oct-05	Feb-08	
A06	ODOT	13541	I-5:Seven Oaks Interchange - Bundle A06	3		3	3	Jackson	May-04	Dec-05	
A07	OBDP	13542	I-5:N. Albany Interchange - Bundle A07	5		5	2	Linn	Sep-05	May-06	
A08	OBDP	12357	I-5:Row River Construction - Bundle A08	3		3	2	Lane	Mar-03	Apr-04	
A11	OBDP	13543	Oregon Avenue - I-5 O'xing (Creswell) - Bundle A11	3		2	1	2	Lane	Aug-04	Oct-05
A51	ODOT	15323	US26: Rush Creek - Antone - Bundle A51	2		2	4	Wheeler	Oct-05	Apr-07	
200	OBDP	13310	Stage 2 Bridges Moved to No Work	10	10		2,4	Klamath, Lane, Linn	---	---	
202	OBDP	14024	I-84: Stanton Blvd - Snake River Bundle 202	6	2	3	1	5	Malheur	Sep-05	Jan-07
203	OBDP	14116	I-84:Burnt River(Dixie Cr)-Lime Intchg Bundle 203	2		1	1	5	Baker	Oct-05	Oct-07
204	OBDP	14026	I-84: Encina - Durkee Bridge Repairs - Bundle 204	6		6	5	Baker	Jul-04	Apr-05	
205	OBDP	14027	I-84: Pendleton - North Powder Bundle 205	1		1	5	Umatilla, Union	Apr-05	Jul-07	
206	OBDP	14028	I-84: Irrigon Junction - Hilgard Intchg Bundle 206	8	2	5	1	5	Morrow, Umatilla, Union	Apr-05	Oct-06
207	ODOT	14029	I-84:Fifteen Mile Cr-US97:Spanish Hollow Cr - B207	4	2	1	1	4	Sherman, Wasco	Nov-05	May-09
208	OBDP	14030	I-84:Cascade Locks - 2nd St(Hood River)Bundle 208	11	4	5	2	1	Hood River	Feb-06	Apr-08
209	OBDP	14031	I-84: Dodson - Tanner Creek Bundle 209	5	1	3	1	1	Multnomah	Jan-06	Mar-09
210	OBDP	14032	I-84: Sandy River - Jordan Rd - Bundle 210	4		2	2	1	Multnomah	Mar-06	Feb-10
211	OBDP	14033	I-5:Wilsonville-Hayesville Intchg(D/B)Bundle 211	4	2	2	2	Clackamas, Marion	Apr-06	Apr-06	
212	OBDP	13284	I-5: N. Santiam - Kuebler Blvd. (Salem) - Bundle 212	7		1	6	2	Marion	Dec-03	Oct-05
213	OBDP	14034	I-5, OR228 & OR34: Albany Bridge Repairs Bundle 213	8	2	6	2	Linn	Aug-04	Apr-05	
214	OBDP	14035	I-5:Cox Crk - McVay Access - (No Work) Bundle 214	4	4		2	Linn	---	---	
215	OBDP	14036	I-5:McKenzieR.(Spores) - Goshen Grade (D/B) - Bundle 215	10	5	5	2	Lane	May-06	May-06	
216	OBDP	14037	I-5: Sodom Ditch -Calapooia Oflow - Bundle 216	6	2	2	2	Linn	Aug-05	May-07	
217	OBDP	14038	OR 58: Odell Creek - Crescent Creek - Bundle 217	2		2	2,4	Klamath	Sep-04	Dec-05	
218	OBDP	14039	OR 58: Willamette Relief - Logging Rd - Bundle 218	8	2	2	4	2	Lane	Aug-05	Mar-07
219	OBDP	14257	I-84: 102nd Ave O'xing - Bundle 219	1	1		1	Multnomah	---	---	
220	OBDP	14259	I-5: Willamette River Bridge - Bundle 220	1		1	2	Lane	May-08	Jan-10	
221	OBDP	14258	OR 58: US 97 Overcrossing - Bundle 221	1		1	4	Klamath	Aug-05	Dec-06	
222	ODOT	15182	I-84: Rock Creek - Hostetter Way - Bundle 222	2		2	4	Wasco	Jul-06	Apr-07	
224	OBDP	15644	I-84: Exit 64 (Hood River) - Bundle 224	1		1	1	Hood River	Aug-08	Oct-09	
225	OBDP	15733	I-84: Hood River - Mosier Creek - Bundle 225	1		1	4	Hood River, Wasco	Nov-05	Jun-08	
251	ODOT	14197	I-5: Bellline Interchange - Bundle 251	2		2	2	Lane	Dec-04	Feb-06	
255	ODOT	10352	I-5: N Jefferson Intch-N Albany Intch (SB) - Bundle 255	3		3	2	Linn, Marion	Sep-02	Jan-04	
256	ODOT	13429	I:84/US-395: Stanfield Interchange Improvements - Bundle 256	1		1	5	Umatilla	May-04	Feb-06	
257	ODOT	16035	OR58: Salt Creek Tunnel & Half Viaducts-Bundle 257	1		1	2	Lane	Jan-10	Nov-12	
301	OBDP	14040	I-5: Eagle Mill Rd - Neil Creek Rd - Bundle 301	5		5	3	Jackson	May-06	Jan-08	
302	OBDP	14041	I-5: Creek & County - Central Point - Bundle 302	4	1	1	2	3	Jackson	Dec-05	May-07
303	OBDP	14042	I-5: S. Wolf Creek - Foothills Blvd - Bundle 303	13	6	6	1	3	Josephine	Sep-05	Feb-07
304	OBDP	14043	I-5: Louse Creek - US 199 - Bundle 304	3		3	3	Josephine	Jun-06	Dec-07	
306	OBDP	14047	I-5: Weaver (D/B) - Bundle 306	7		2	5	3	Douglas	Oct-06	Oct-06
307	OBDP	14048	I-5/OR 42: Winston - McLain Ave - Bundle 307	5	2	2	1	3	Douglas	Dec-06	May-09
308	ODOT	14049	I-5:N.Umpqua River Bridges(Winchester)-Bundle 308	2		2	3	Douglas	Dec-06	Sep-08	
309	OBDP	14050	I-5: Rice Hill Frtg Rd-Comstock Cem Rd-Bundle 309	7	1	6	3	Douglas	May-07	Apr-08	
310	OBDP	14051	I-5:Coast Fork Willamette-Martin Creek-Bundle 310	5		5	2	Lane	Apr-06	Mar-08	
312	OBDP	14053	I-5: Camas Swale - Saginaw Road - Bundle 312	8	5	3	2	Lane	Oct-05	Mar-08	
313	OBDP	14260	I-5: Homestead to S Gold Hill - Bundle 313	5		5	3	Jackson	Nov-06	Aug-08	
314	ODOT	14641	I-5: Valley View Rd (N Ashland Intchg)-Bundle 314	1		1	3	Jackson	Aug-08	May-10	
315	OBDP	14642	I-5: Canyonville - Glendale Intch - Bundle 315	2		1	1	3	Douglas	Dec-05	Oct-07
316	ODOT	16956	I-5: Green Springs Hwy (Exit 14) - Bundle 316	1		1	3	Jackson	Aug-08	Apr-10	
351	ODOT	12365	I-5: Graves Creek Bridge Replacement - Bundle 351	1		1	3	Josephine	Oct-02	May-03	
352	ODOT	12401	I-5: S. Umpqua R. & CORP (Shady) - Bundle 352	1		1	3	Douglas	Sep-02	Feb-04	
353	ODOT	13467	I-5: Sutherlin to Roseburg (D/B) - Bundle 353	5		2	3	3	Douglas	Nov-04	Nov-04
355	ODOT	12707	I-5:Exit99 Intchg Imprv & Bridge Rplcmts-Bundle 355	2		2	3	Douglas	Oct-03	May-06	
357	ODOT	15186	I-5: Del Rio Rd/Winchester Interchange -Bundle 357	1		1	3	Douglas	Mar-06	Mar-11	
400	OBDP	13312	Stage 4 Bridges Moved to No Work - Bundle 400	12	12		1,2,3,5	(multiple counties)	---	---	
401	OBDP	14221	OR38: Elk Cr. - Hardscrabble Cr. (D/B) - Bundle 401	5		5	3	Douglas	Dec-06	Dec-06	
404	ODOT	14224	OR31/US395: Cattlepass - Crooked Cr. - Bundle 404	2		2	4	Lake	Apr-07	May-08	
405	ODOT	14225	OR42:Beaver Cr-Mid Fork Coquille R - Bundle 405	10	4	6	3	Coos, Douglas	Jun-07	Nov-09	
409	OBDP	14229	US20: Harris Rd & WPRR - Marys River - Bundle 409	4	1	3	2	Benton	Nov-06	Apr-10	
414	ODOT	14610	US395:McKay Cr - Silvies Slough D/B-Bundle 414	10	2	1	7	5	Grant, Harney, Umatilla	May-08	May-08
415	ODOT	14609	US30: Big Creek - Tide Creek - Bundle 415	5	1	4	1,2	Clatsop, Columbia	Apr-07	Apr-09	
426	ODOT	15815	OR19: Harper Cr - Mule Shoe Cr - Bundle 426	5		5	4	Wheeler	Jan-09	May-10	
427	ODOT	16907	US395: Canyon Cr - US26: Dixie Cr - Bundle 427	3		3	5	Grant	Jan-09	Mar-10	
428	OBDP	16957	US20: Beaver Cr - Little Beaver Cr - Bundle 428	4		4	2	Lincoln	---	Mar-10	
450	OBDP	13312	Crossovers - No Work	1	1		3	Douglas	---	---	
451	OBDP	13312	Olalla Creek, Hwy 35 (Upper Lookingglass) - No Work	1	1		3	Douglas	---	---	
452	ODOT	14194	US20: Yaquina River - Bundle 452	1	1		2	Lincoln	---	---	
453	ODOT	14149	US97: Willowdale - Madras Bridges - Bundle 453	2	1	1	4	Jefferson	Feb-05	Nov-06	
454	ODOT	13225	US20: Pioneer Mtn - Eddyville (D/B) - Bundle 454	1		1	2	Lincoln	May-05	May-05	
457	ODOT	14227	OR7: Powder River - Bundle 457	2		2	5	Baker	Jul-06	Apr-09	
459	ODOT	15530	US30:Lower Columbia River Hwy @ Van Street - Bundle 459	1	1		1	Columbia	---	---	
460	ODOT	14228	OR82: Minam Viaduct & Wallowa R (Minam) - B460	4	2	1	1	5	Union, Wallowa	Jan-08	May-10
461	ODOT	16657	US395: Smith Creek - Fox Creek - Bundle 461	2	1	1	5	Grant	Aug-08	Aug-09	
462	ODOT	16958	OR82: Grande Ronde R & INP RR (Indian Cr) - B462	1		1	5	Union	---	Apr-10	
506	OBDP	15227	OR126: Eugene Water Board Canal - Bundle 506	1	1		2	Lane	---	---	
508	OBDP	15228	I-5:Elkhead Rd - OR126:Knowles Cr D/B - Bundle 508	7		2	5	2,3	Douglas, Lane	Jan-09	Jan-09
509	OBDP	15328	OR200: Bear Cr.-S. Fork Siuslaw River - Bundle 509	5	2	3	2	Lane	Dec-08	Mar-10	
510	OBDP	16301	OR6: Wilson R (Mills)-Devils Lake Fork-Bundle 510	2		2	1,2	Tillamook	Nov-08	Jun-10	
511	OBDP	16302	US26: East Fork Dairy Cr - McKay Cr - Bundle 511	3	1	2	1	Multnomah, Washington	Mar-09	Apr-10	
512	ODOT	16398	OR6:Wilson R-US26:Hwy 47 WB over PNWR (Vadis)-B512	3		3	1,2	Tillamook, Washington	Dec-07	Oct-09	
552	ODOT	13313	US199: Elk Creek - Bundle 552	1	1		3	Josephine	---	---	
553	ODOT	14509	US101: COR (North Bend) - Bundle 553	1	1		3	Coos	---	---	
556	ODOT	13069	US 26: OR 217 - Sylvan Interchange - Bundle 556	1		1	1	Washington	May-02	Apr-03	
557	ODOT	11816	US199:E/W Fork Illinois R. Brdg Rplcmts-Bundle 557	2		2	3	Josephine	Aug-02	Apr-05	
558	ODOT	14232	US26: Kern Creek - Lancaster Creek - Bundle 558	2		2	5	Malheur	Sep-07	Mar-09	
559	ODOT	14235	US20: Soda Fork - Bundle 559	1	1		2	Linn	---	---	
560	ODOT	14608	OR230/OR138: North Umpqua - Upper Rogue - Bundle 560	4		4	3	Douglas, Jackson	Aug-08	Mar-10	

NOTES:

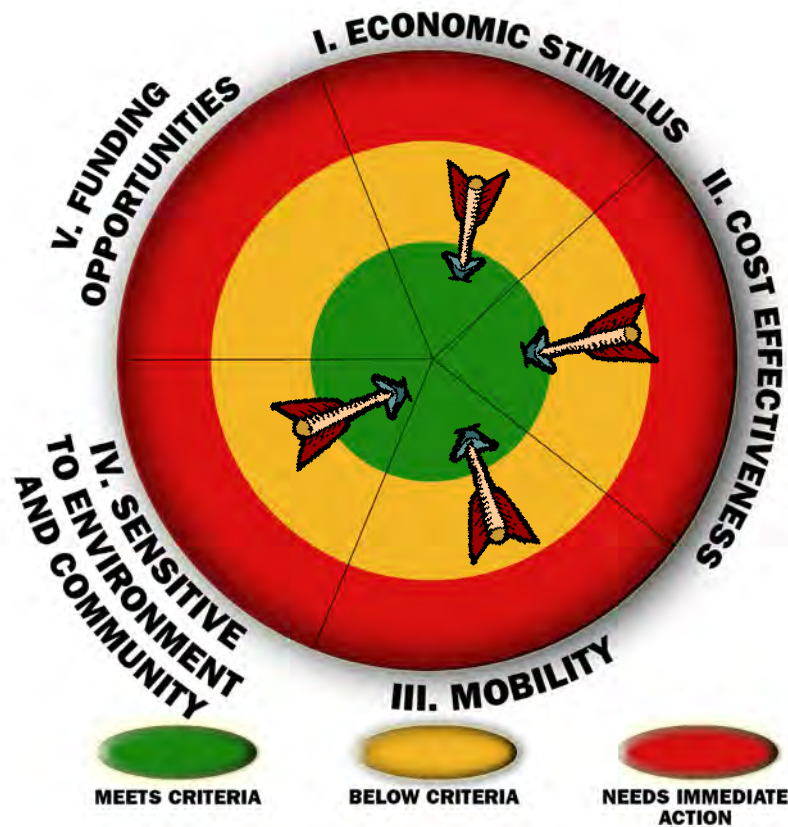
Bundle numbers correspond to program stage construction bundles. For example, Bundle 102 is in Stage 1, and "A" represents Stage 1A.
Updated bundle information is posted to the bridge program web site as it becomes available: http://egov.oregon.gov/ODOT/HWY/OTIA/bridge_delivery.shtml.
"D-B" represents a design-build bundle.

PERFORMANCE MEASUREMENT

Performance Measures for Regular Reporting

Each month, program managers collect data and report on information relevant to CS³ and the bridge program goals. Some of these performance measures provide valuable information to program and project managers in making day-to-day management decisions. Other performance measures are regularly reported to ODOT, the legislature, and stakeholders and convey the overall quality of the bridge program.

The Bull's Eye graphic below presents a summary of the performance measures reported on the following page. The location of the arrow is determined by averaging the reported performance measures in each goal area. The intent of the Bull's Eye graphic is to illustrate how the goals are balanced and interrelated. As the program continues to grow, the performance measures reported here will be assessed for the quality of the information provided. Every six months, ODOT and OBDP may modify the reporting methodologies for the performance measures. A full list of performance measures and their methodologies is available in the CS³ Performance Measure Framework on the Oregon Bridge Delivery Partners web site: www.obdp.org.



December 2009 CS³ Performance Measures

Methodology Number*	Outcome Measure	October 2009	November 2009	Brief Description of Activity
Goal 1. Stimulate Oregon's economy				
#4	Total value of design and construction contracts expended	Y	R	From August 2009 to October 2009, there was a 24 percent average variance between the total value of contracts planned to be let versus contracts actually expended. The status is red because the variance is greater than 20 percent.
#5	Program management expenditures for Oregon vs. non-Oregon firms	G	G	OBDP spent 100 percent of program expenditures on Oregon firms in October 2009.
Goal 2. Employ efficient and cost-effective delivery practices				
#18	Number of design-bid-build bridges with design phase contractually completed	G	G	To date, 100 percent of the design phase of planned design-bid-build bridges is contractually complete.
#19	Number of design-bid-build bridges with construction phase contractually completed	G	G	To date, 97 percent of the construction phase of planned design-bid-build bridges is contractually complete.
#20	Number of design-build bridges contractually completed	G	G	To date, 100 percent of the planned design-build bridges are contractually complete.
#21	Percent of bridges on schedule for OTIA III State Bridge Delivery Program	Y	Y	79 percent of OTIA III bridges are on schedule. This represents a decrease of three percent from last month.
#22	Percent of bridges on budget for OTIA III State Bridge Delivery Program	R	R	71 percent of OTIA III bridges are on budget. This represents an increase of one percent from last month.
Goal 3. Maintain freight mobility/keep traffic moving				
#27	Total travel time through corridor			
#27A	I-5 North Corridor / OR 58 (US 97) to Washington State Line	G	G	Corridor delays are in alignment with corridor delay threshold.
#27B	I-5 South Corridor / OR 58 (Eugene, OR) to California State Line	G	G	Corridor delays are in alignment with corridor delay threshold.
#27C	I-84 Corridor I-205 (Portland, OR) to Idaho State Line	G	R	Corridor delays exceeded the delay threshold for 4 hours in the eastbound direction near mile post 39 during the Sunday after Thanksgiving. Prior to the 2009 holiday weekend, delays were estimated to be less than the delay threshold and thus no delay exception was requested for this time period.
#27D	US 26 / US 97 I-205 (Clackamas) to California State Line	G	G	Corridor delays are in alignment with corridor delay threshold.
Goal 4. Build projects sensitive to communities and their landscape				
#36	Percent of projects using environmental programmatic permitting	G	G	95 percent of eligible bridges are using the environmental programmatic permitting process.

Methodology Number*	Outcome Measure	October 2009	November 2009	Brief Description of Activity
#37	Percent of projects with permit amendments and variances requested that lead to greater environmental impact	G	G	The bridge program received one formal violation in November that does not change the reporting metric as 85 percent or more of construction projects did not require permit amendments or variances that lead to greater environmental impacts.
Goal 5. Capitalize on funding opportunities				
#43	Percent of Program funded by alternative sources	N/A	N/A	No outcome measures in development.

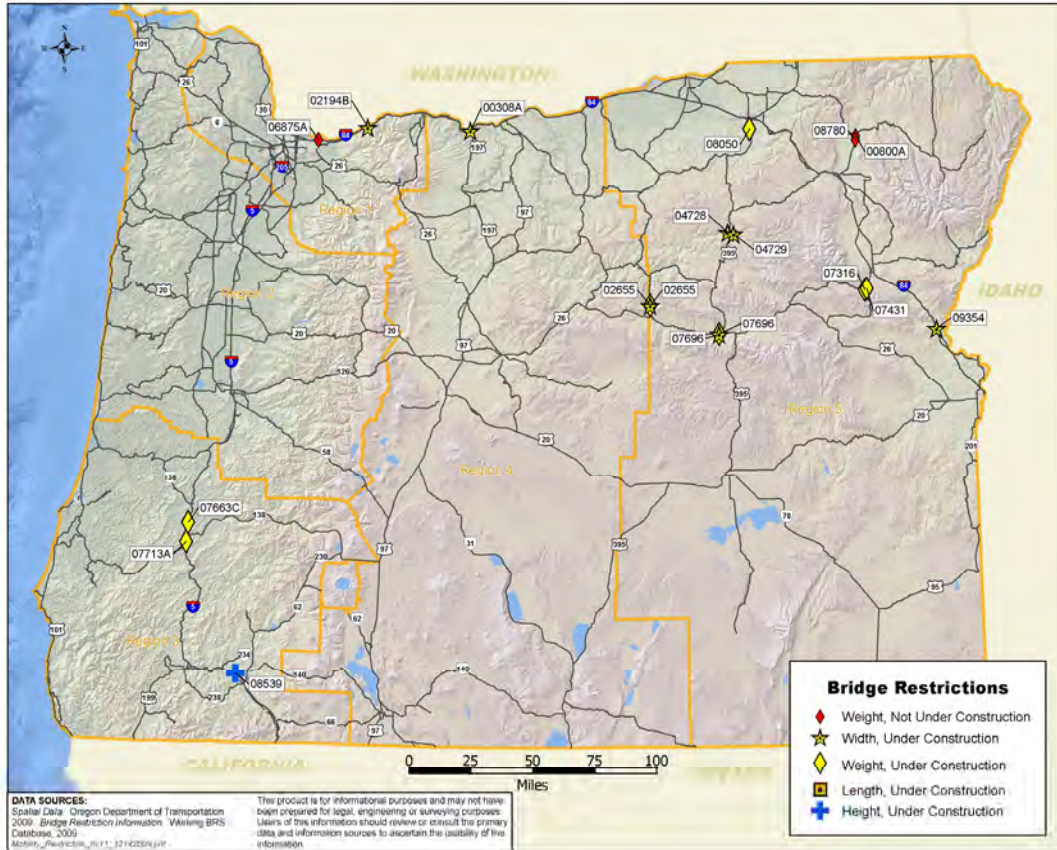
* This refers to the outcome measure number in the CS³ Performance Measures Framework. This document contains the methodology and targets for all performance measures. It can be found at: www.obdp.org

Indicator Measures

Goal 3. Maintain freight mobility/keep traffic moving

Location of bridges under construction with height, width and/or weight restrictions:

#15



OTIA III State Bridge Delivery Program

13-MONTH LOOK AHEAD

Updated through November 2009 month end

(Note: * indicates date has been locked until changes are approved)

Activity Name	Target	Current Forecast	[ID]	13-MONTH LOOK AHEAD																			
				09 Sep	Qtr 4, 2009			Qtr 1, 2010			Qtr 2, 2010			Qtr 3, 2010			Qtr 4, 2010			Qtr 1, 2011			
				Sep	Oct	Nov	Dec	Jan	Feb	Mar	Apr	May	Jun	Jul	Aug	Sep	Oct	Nov	Dec	Jan	Feb	Mar	
DESIGN PROCUREMENT				01/04/10	04/06/09 A																		
257 Kick-off Meeting (OR 58: Salt Creek Tunnel & Half Viaducts)	01/04/10	04/06/09 A	R							04/06/09 A													
DESIGN				01/29/10	07/20/10																		
220 CM/GC Guaranteed Maximum Price (GMP) preparation and negotiations	01/29/10	07/20/10	2																				
CONSTRUCTION LETTING				03/03/11	03/03/11																		
461 Construction Start by Region (US395: Smith Creek - Fox Creek - Bundle 461) NOT A BID LET	08/14/09	10/05/09 A	R																				
224 Bid Opening / Let Date (I-84: Exit 64 (Hood River))	10/29/09	10/29/09 A	2																				
512 Bid Opening / Let Date (OR6:Wilson R-US26:Hwy 47 WB over PNWR (Vadis))	10/29/09	10/29/09 A	R																				
405 Bid Opening / Let Date (OR 42: Beaver Cr - Mid Fork Coquille R)	11/19/09	11/19/09 A	4																				
210 Bid Opening / Let Date (I-84: Sandy River - Jordan Rd)	02/18/10	02/18/10*	2																				
427 Bid Opening / Let Date (US395: Canyon Cr - US26: Dixie Cr - Bundle 427)	03/04/10	03/04/10*	R																				
560 Bid Opening / Let Date (OR230/OR138: North Umpqua - Upper Rogue)	03/18/10	03/25/10*	R																				
428 Bid Opening / Let Date (US 20: Beaver Creek - Marys River)	03/18/10	03/18/10*	4																				
509 Bid Opening / Let Date (OR200: Bear Cr. - S. Fork Siuslaw River - Bundle 509)	03/25/10	09/23/10*	5																				
409 Bid Opening / Let Date (US 20: Beaver Creek - Marys River)	04/15/10	04/15/10*	4																				
511 Bid Opening / Let Date (US26: East Fork Dairy Cr - McKay Cr)	04/22/10	04/22/10*	5																				
462 Bid Opening / Let Date (OR82: Grande Ronde R & INP RR (Indian Cr) - B462)	04/22/10	04/22/10*	R																				
316 Bid Opening / Let Date (I-5: Green Springs Hwy (Exit 14))	04/29/10	04/29/10*	3																				
426 Bid Opening / Let Date (OR19: Harper Cr- Mule Shoe Cr - Bundle 426)	05/06/10	05/06/10*	R																				
460 Bid Opening / Let Date (OR 82: Wallowa Lake Hwy Bridges - Bundle 460)	05/13/10	05/13/10*	R																				
314 Bid Opening / Let Date (I-5: Valley View Rd (N Ashland Intchg))	05/20/10	05/20/10*	3																				
510 Bid Opening / Let Date (OR6: Wilson R (Mills)-Devils Lake Fork)	06/24/10	06/24/10*	5																				
357 Bid Opening / Let Date (I-5: Del Rio Rd/Winchester Interchange)	03/03/11	03/03/11*	R																				
CONSTRUCTION				11/30/11	12/30/10																		
A06 Construction Complete (2nd Notice) (I-5: Seven Oaks Interchange)	10/31/08	06/30/10*	R																				
216 Construction Complete (2nd Notice) (I-5: Sodom Ditch - Calapooia Oflow)	09/10/09	09/10/09 A	2																				
302 Construction Complete (2nd Notice) (I-5: Creek & County - Central Point)	09/25/09	09/25/09 A	3																				
313 Construction Complete (2nd Notice) (I-5: Homestead to S Gold Hill)	09/30/09	06/30/09 A	3																				
461 Construction Complete (2nd Notice) (US395: Smith Creek - Fox Creek - Bundle 461)	09/30/09	11/04/09 A	R																				
404 Construction Complete (2nd Notice) (OR 31/US 395: Cattlepass - Crooked Cr.)	10/05/09	06/01/09 A	R																				
401 Construction Complete (2nd Notice) (OR 38: Elk Cr. - Hardscrabble Cr. (D/B))	10/15/09	06/08/09 A	4																				
205 Construction Complete (2nd Notice) (I-84: Pendleton - North Powder)	10/31/09	05/28/10*	2																				
A05 Construction Complete (2nd Notice) (US 26: Ochoco Creek - Bridge Creek)	11/15/09	11/16/09 A	R																				
301 Construction Complete (2nd Notice) (I-5: Eagle Mill Rd - Neil Creek Rd)	11/15/09	12/31/09*	3																				
215 Construction Complete (2nd Notice) (I-5: McKenzie R. (Spores) - Goshen Grade (D/B))	11/30/09	12/11/09*	2																				
306 Construction Complete (2nd Notice) (I-5: Weaver (D/B))	12/31/09	12/31/09*	3																				
312 Construction Complete (2nd Notice) (I-5: Camas Swale - Saginaw Road)	12/31/09	05/06/10*	3																				
226 Construction Complete (2nd Notice) (I-84: The Dalles - Fifteen Mile Cr IM-B226)	12/31/09	12/31/09*	R																				
203 Construction Complete (2nd Notice) (I-84: Burnt River (Dixie Cr) - Lime Intchg)	03/23/10	12/31/09*	2																				
209 Construction Complete (2nd Notice) (I-84: Dodson - Tanner Creek)	05/28/10	07/21/10*	2																				
415 Construction Complete (2nd Notice) (US 30: Big Creek - Tide Creek)	06/30/10	06/30/10*	R																				
304 Construction Complete (2nd Notice) (I-5: Louse Creek - US 199)	07/11/10	07/11/10*	3																				
308 Construction Complete (2nd Notice) (I-5: N. Umpqua River Bridges (Winchester))	08/31/10	08/31/10*	R																				
512 Construction Complete (2nd Notice) (OR6:Wilson R-US26:Hwy 47 WB over PNWR (Vadis))	10/15/10	10/15/10*	R																				
208 Construction Complete (2nd Notice) (I-84: Cascade Locks - 2nd St (Hood River))	10/31/10	10/31/10*	2																				
457 Construction Complete (2nd Notice) (OR 7: Powder River)	10/31/10	10/31/10*	R																				
225 Construction Complete (2nd Notice) (I-84: Hood River - Mosier Creek)	10/31/10	10/31/10	2																				
310 Construction Complete (2nd Notice) (I-5: Coast Fork Willamette - Martin Creek)	11/16/10	11/16/10*	3																				
307 Construction Complete (2nd Notice) (I-5/OR 42: Winston - McLain Ave)	06/30/11	12/30/10*	3																				
560 Construction Complete (2nd Notice) (OR230/OR138: North Umpqua - Upper Rogue)	11/30/11	11/30/10*	R																				

FOR INFORMATION ONLY

ID 1-5: Represents Stage. CEI by OBDP.

ID "R": CEI by ODOT/Region.

◆ Current Forecast
 ▲ Target Schedule