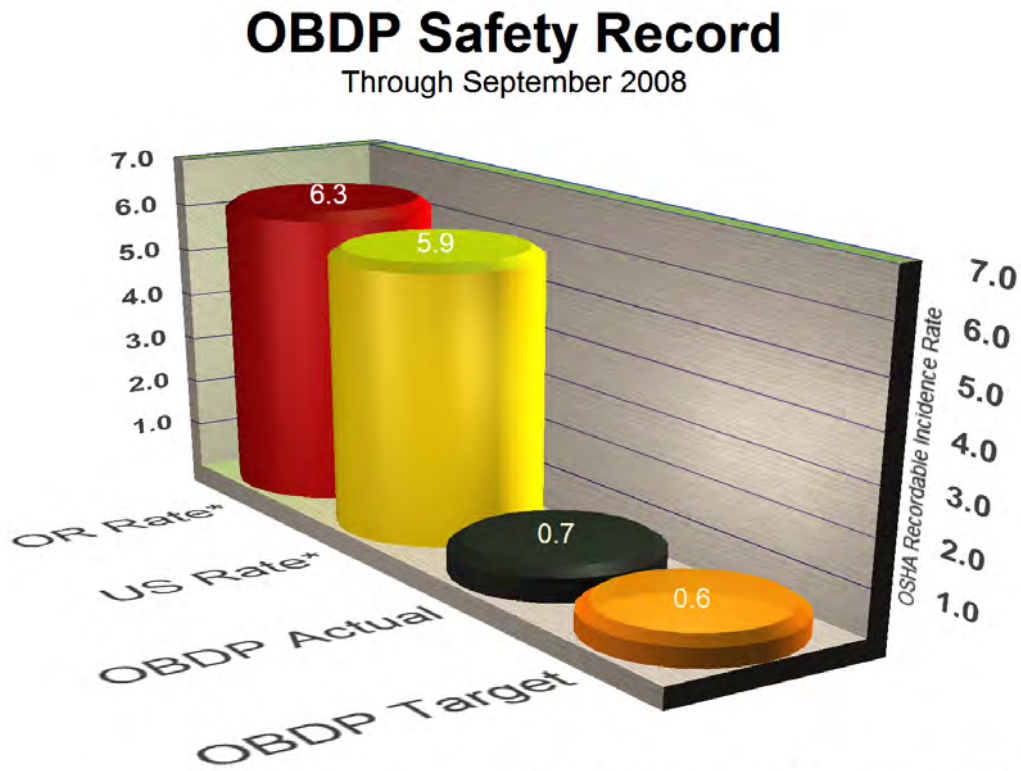


SAFETY

Through September 2008, OBDP continues to have a notable safety record, earning 1,812,178 hours worked without an OSHA restricted or lost workday incident. The figure below illustrates the OBDP actual versus the US rate, Oregon rate, and OBDP target.



* US and OR Incidence Rates Most Recent Data 2006

QUALITY PROGRAM SUMMARY FOR SEPTEMBER 2008

The OBDP Quality Program implementation continues to conform to the five program goals. These five goals are continually monitored using CS³ processes (see Performance Measurement on this web site) to identify improvement opportunities and resolve potential concerns.

OBDP is implementing the following Quality Program processes to support the overall bridge program.

Training Status

Training is one of the most important CS³ process tools. OBDP is currently coordinating and/or providing training, as needed, in the following areas:

- Safety Training
- CS³ Training
- Traffic Control – Flagger and Traffic Control Supervisor
- Defensive Driving
- Document Control Training
- Bridge Project Delivery
- Environmental Training
- State Travel Expenditure Training
- CEI Training
- ODOT Inspection Certification
- Mobility Training
- Surveillance Training

Consultant and Contractor Quality Plan Review Status

OBDP's approach to improving consultant and contractor quality is by using the CS³ process of employing efficient and cost-effective delivery practices. OBDP implemented, with ODOT assistance, two standard quality plan templates: 1) Design Quality Plan template, and 2) Construction Quality Plan template.

- Submitted 35 design-bid-build design consultant quality plans. Nine design-bid-build design quality plans are accepted, three plans are conditionally accepted, and three are not accepted.
- Of the 48 specialty consultant contracts, 24 specialty consultants have submitted quality plans. Twenty-two specialty consultant quality plans are accepted and two are conditionally accepted. Twenty-four specialty contracts do not require DQP.
- Submitted 25 design-bid-build construction contractor quality plans. Sixteen plans are accepted and nine are conditionally accepted.
- Submitted seven design-build contractor quality plans. Six quality plans are accepted and one is conditionally accepted.

OBDP Nonconformance Report Status

OBDP uses a tracking system that identifies work process discrepancies—including specification and drawing discrepancies—and ensures appropriate correction and disposition. This process is a proven management tool for addressing problems and promoting continuous improvement. To date, OBDP has documented 437 nonconformances in bundles administered by OBDP and design-build contractors. Three nonconformances were closed during this period and 111 remain in process.

All nonconformance reports are now being tracked in the Construction Engineering Inspection tool.

OBDP Surveillance Report Status

OBDP implements a performance-based quality surveillance tracking system to identify real-time quality program activities. To date, OBDP has performed 2,133 surveillances on bundles administered by OBDP. Fifty-eight surveillances were issued during this period and 68 were closed. A total of 1,976 observations were closed at the end of this period while 117 remain to be resolved.

Quality Audit Report Status

OBDP implemented an audit process to assure the bridge program is correctly implemented in both design and construction. To date, OBDP has conducted 76 audits.

- Thirty three on design consultants involving Bundles 202, 203, 204, 205, 206, 207 (part 1 and part 2), 208, 209 (part 1 and part 2), 210 (part 1), 213, 216, 217, 218-221, 301, 302, 303, 304, 307 (part 1), 308 (part 1), 310, 312, 313 (part 1 and part 2), 315, A04, A05, A07, and 404 (part 1 and part 2). Two design audit findings remain open.

- Twenty seven on the construction phase of design-bid-build Bundles A04, A07, A09 (2), A11 (2), 103 (2), 202, 203, 204, 205, 206 (2), 212 (3), 213, 216, 217, 218, 221, 302, 303 (2), 304, and 315. Seven audit findings remain open.
- Fifteen on design-build Bundles 101 (1), A02 (4), 211 (2), 215 (2), 306 (4), and 401 (2). No audit findings remain open.

The audit results indicate that as a whole these bundles are being implemented in accordance with approved quality principles. During this reporting period, no items were resolved and three new items were opened. A total of 13 items remain unresolved.

ODOT Quality Assessment Report Status

ODOT has implemented a quality assessment program, and OBDP is working with the assessors to assist them in resolving any reported issues. To date, ODOT has conducted 226 assessments.

During this reporting period, the ODOT assessments identified 10 non-compliances. Two non-compliances were resolved and a total of 25 remain open.

Environmental Field Inspection Status

The OBDP environmental field inspection process is an important tool for verifying environmental compliance on construction bundles. Environmental compliance is imperative to meet our goal of building projects sensitive to communities and landscapes. A complete summary of environmental field inspections is as follows:

Total Number of Environmental Inspections completed in 2005:	232
Total Number of Deficiencies noted in 2005:	110
Total Number of Environmental NCRs issued in 2005	3
Total Number of Environmental Inspections completed in 2006:	417
Total Number of Deficiencies noted in 2006:	419
Total Number of Environmental NCRs issued in 2006	7
Total Number of Environmental Inspections completed in 2007:	241
Total Number of Deficiencies noted in 2007:	180
Total Number of NCRs issued in 2007:	8
Total Number of Environmental Inspections completed in 2008:	217
Total Number of Inspections completed in September:	44
Total Number of Reports Closed in September:	25
Total Number of OPEN Reports to date:	47

Total Number of Deficiencies noted in 2008:	205
Deficiencies noted in September:	36
Total number of deficiencies OPEN to date:	39
Deficiencies closed in September:	53*
Contract violations noted in 2008, to date	53
Contract violations noted in September:	19
Contract violations closed in September:	15
Total Number of NCRs issued in 2008:	14
NCRs issued in September:	4
NCRs closed in September:	3*

* Includes deficiencies, violations or reports noted in previous months.

Regulatory agencies did not issue any major environmental non-compliances during this reporting period.

The contractors are addressing the improvement opportunities and the environmental field inspection staff is regularly monitoring the corrective actions.

OTIA III State Bridge Delivery Program
October, 2008 Summary of Stages 1-5 Progress
As of September, 2008 Month End

Source: OBDP Bridge Reporting System (BRS)

OTIA III State Bridge Delivery Program - Design

	Design Complete	Design Underway	Design Planned To Begin in 2006	Design Planned To Begin in 2007	Design Planned To Begin in 2008	Design Planned To Begin in 2009	Design Planned To Begin in 2010	Design Planned To Begin in 2011	No Work	OTIA III Funded Bridges	% Underway
Stage 1	22	0	0	0	0	0	0	0	1	23	100%
Stage 2	66	16	0	0	0	0	0	0	37	119	100%
Stage 3	76	7	0	0	2	3	0	0	16	104	94%
Stage 4	7	46	0	0	0	0	0	0	24	77	100%
Stage 5	8	10	0	0	7	7	0	0	10	42	56%
TOTALS	179	79	0	0	9	10	0	0	88	365	93%

OTIA III State Bridge Delivery Program - Construction

	Open to Traffic	Construction Underway	Construction Planned To Begin in 2006	Construction Planned To Begin in 2007	Construction Planned To Begin in 2008	Construction Planned To Begin in 2009	Construction Planned To Begin in 2010	Construction Planned To Begin in 2011	No Work	OTIA III Funded Bridges	% Underway
Stage 1	22	0	0	0	0	0	0	0	1	23	100%
Stage 2	39	32	0	0	1	10	0	0	37	119	87%
Stage 3	27	53	0	0	0	6	2	0	16	104	91%
Stage 4	5	14	0	0	1	14	19	0	24	77	36%
Stage 5	3	6	0	0	0	7	16	0	10	42	28%
TOTALS	96	105	0	0	2	37	37	0	88	365	73%

Stage 2

Project Identification Data

General Project Data

Scope & Budget

Status

Table with columns: Unique ID, Original Bridge Number, New Bridge Number, Project Name. Rows 076-161.

Table with columns: Region, County, District, Route, Highway, MP, Construction Bundle Number, Key Number. Rows 076-161.

Table with columns: Original Scope, Original Budget, Current Scope, Current Budget. Rows 076-161.

Table with columns: Design Status, Const. Status. Rows 076-161.

SUB-TOTALS

\$500,207,600

\$523,969,434

Stage 3

Project Identification Data

General Project Data

Scope & Budget

Status

Table with columns: Unique ID, Original Bridge Number, New Bridge Number, Project Name. Rows 162-252.

Table with columns: Region, County, District, Route, Highway, MP, Construction Bundle Number, Key Number. Rows 162-252.

Table with columns: Original Scope, Original Budget, Current Scope, Current Budget. Rows 162-252.

Table with columns: Design Status, Const. Status. Rows 162-252.

Stage 3

Table for Stage 3 containing Project Identification Data, General Project Data, Scope & Budget, and Status columns. It lists various bridge projects with details on location, budget, and completion status.

SUB-TOTALS

\$481,884,800

\$420,794,210

Stage 4

Table for Stage 4 containing Project Identification Data, General Project Data, Scope & Budget, and Status columns. It lists various bridge projects with details on location, budget, and completion status.

Stage 4

Project Identification Data

General Project Data

Scope & Budget

Status

Table with columns: Unique ID, Original Bridge Number, New Bridge Number, Project Name. Rows 330-311.

Table with columns: Region, County, District, Route, Highway, MP, Construction Bundle Number, Key Number. Rows 330-311.

Table with columns: Original Scope, Original Budget, Current Scope, Current Budget, Design Status, Const. Status. Rows 330-311.

SUB-TOTALS

\$193,948,400

\$168,523,247

Stage 5

Project Identification Data

General Project Data

Scope & Budget

Status

Table with columns: Unique ID, Original Bridge Number, New Bridge Number, Project Name. Rows 363-378.

Table with columns: Region, County, District, Route, Highway, MP, Construction Bundle Number, Key Number. Rows 363-378.

Table with columns: Original Scope, Original Budget, Current Scope, Current Budget, Design Status, Const. Status. Rows 363-378.

SUB-TOTALS

\$106,800,600

\$131,998,871

PROGRAM TOTALS

\$1,343,571,000

\$1,311,518,546

Source: OBDP Bridge Reporting System (BRS)

Updated through September, 2008 Month End

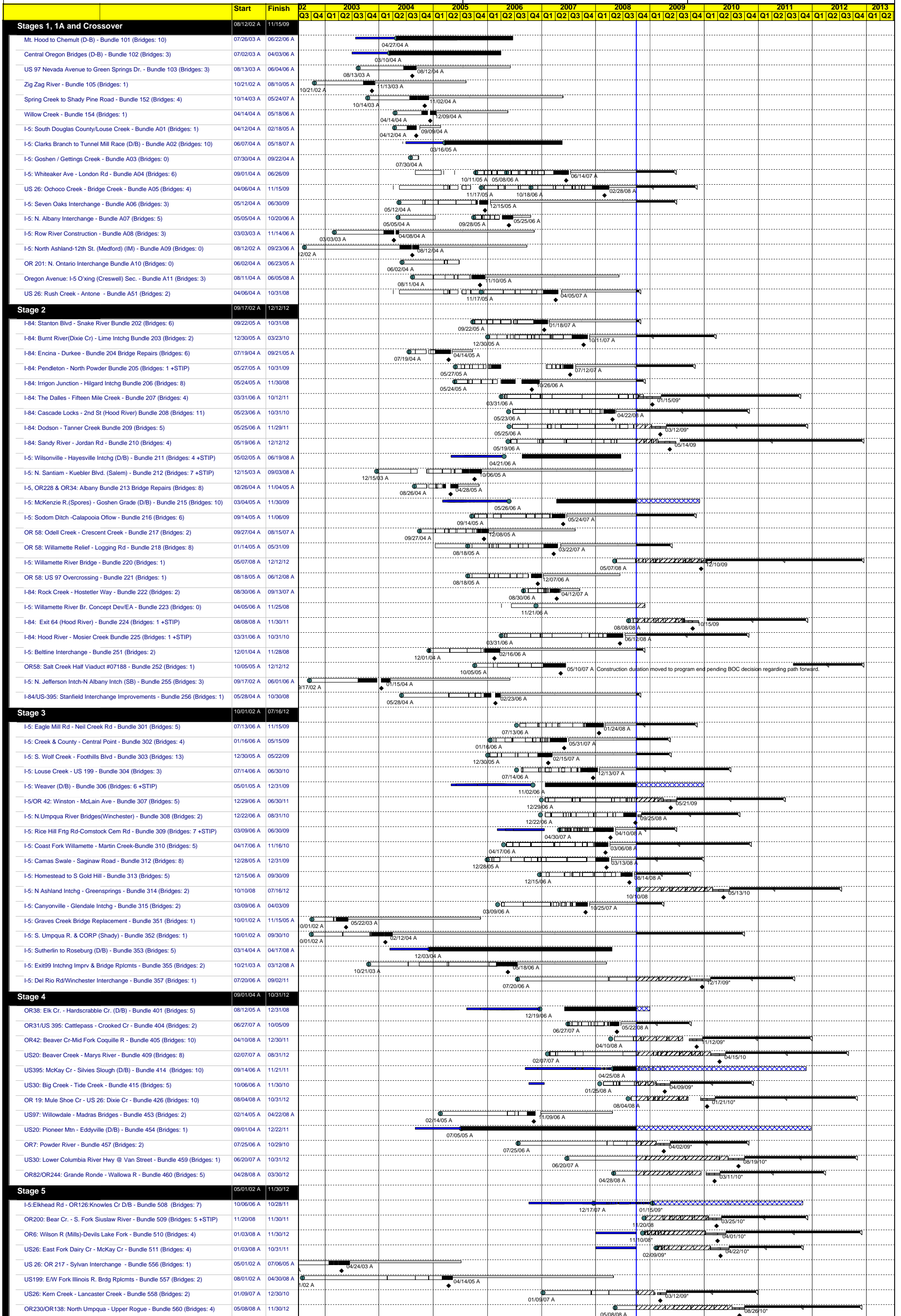
Const. Bundle Number	Construction Management By	Key Number	Construction Bundle Name	OTIA III Funded No. of Bridges	Approved No Work Bridges	Repair /Replace Bridges	ODOT Regions	County	Planned A&E Award or Design k/o	Planned Construction Let Date or Design k/o
101	OBDP	13563	Mt. Hood to Chemult (D/B) - Bundle 101	10		10	1,4	Clackamas, Deschutes, Jefferson, Klamath	Apr-04	Apr-04
102	ODOT	13208	Central Oregon Bridges (D/B) - Bundle 102	3		3	5	Harney, Malheur	Mar-04	Mar-04
103	OBDP	13213	US 97: Nevada Avenue to Green Springs Dr. - Bundle 103	3		1 2	4	Klamath	Aug-03	Aug-04
105	ODOT	12171	Zig Zag River - Bundle 105	1		1	1	Clackamas	Oct-02	Nov-03
152	ODOT	13585	Spring Creek to Shady Pine Road - Bundle 152	4		1 3	4	Klamath	Oct-03	Nov-04
154	ODOT	13573	Willow Creek - Bundle 154	1		1	4	Jefferson	Apr-04	Dec-04
A02	OBDP	13711	I-5:Clarks Branch to Tunnel Mill Race D/B-Bundle A02	10	1	1 8	2,3	Douglas, Lane	Mar-05	Mar-05
A04	OBDP	13539	I-5: Whiteaker Ave - London Rd - Bundle A04	6	1	2 3	2	Lane	Sep-05	Jun-07
A05	ODOT	13540	US26: Ochoco Creek - Bridge Creek - Bundle A05	4	1	3	4	Crook, Wheeler	Oct-05	Feb-08
A06	ODOT	13541	I-5:Seven Oaks Interchange - Bundle A06	3		3	3	Jackson	May-04	Dec-05
A07	OBDP	13542	I-5:N. Albany Interchange - Bundle A07	5		5	2	Linn	Sep-05	May-06
A08	OBDP	12357	I-5:Row River Construction - Bundle A08	3		3	2	Lane	Mar-03	Apr-04
A11	OBDP	13543	Oregon Avenue - I-5 O'xing (Creswell) - Bundle A11	3		2 1	2	Lane	Aug-04	Oct-05
A51	ODOT	15323	US26: Rush Creek - Antone - Bundle A51	2		2	4	Wheeler	Oct-05	Apr-07
200	OBDP	13310	Stage 2 Bridges Moved to No Work	10	10		2,4	Klamath, Lane, Linn	---	---
202	OBDP	14024	I-84: Stanton Blvd - Snake River Bundle 202	6	2	3 1	5	Malheur	Sep-05	Jan-07
203	OBDP	14116	I-84:Burnt River(Dixie Cr)-Lime Intchg Bundle 203	2		1 1	5	Baker	Oct-05	Oct-07
204	OBDP	14026	I-84: Encina - Durkee Bridge Repairs - Bundle 204	6		6	5	Baker	Jul-04	Apr-05
205	OBDP	14027	I-84: Pendleton - North Powder Bundle 205	1		1	5	Umatilla, Union	Apr-05	Jul-07
206	OBDP	14028	I-84: Irrigon Junction - Hilgard Intchg Bundle 206	8	2	5 1	5	Morrow, Umatilla, Union	Apr-05	Oct-06
207	OBDP	14029	I-84: The Dalles - Fifteen Mile Creek - Bundle 207	4	2	1 1	4	Sherman, Wasco	Nov-05	Dec-08
208	OBDP	14030	I-84:Cascade Locks - 2nd St(Hood River)Bundle 208	11	4	5 2	1	Hood River	Feb-06	Apr-08
209	OBDP	14031	I-84: Dodson - Tanner Creek Bundle 209	5	1	3 1	1	Multnomah	Jan-06	Feb-09
210	OBDP	14032	I-84: Sandy River - Jordan Rd - Bundle 210	4		2 2	1	Multnomah	Mar-06	Mar-09
211	OBDP	14033	I-5:Wilsonville-Hayesville Intchg(D/B)Bundle 211	4	2	2	2	Clackamas, Marion	Apr-06	Apr-06
212	OBDP	13284	I-5: N. Santiam - Kuebler Blvd. (Salem) - Bundle 212	7		1 6	2	Marion	Dec-03	Oct-05
213	OBDP	14034	I-5, OR228 & OR34: Albany Bridge Repairs Bundle 213	8	2	6	2	Linn	Aug-04	Apr-05
214	OBDP	14035	I-5:Cox Crk - McVay Access - (No Work) Bundle 214	4	4		2	Linn	---	---
215	OBDP	14036	I-5:McKenzieR.(Spores) - Goshen Grade (D/B) - Bundle 215	10	5	5	2	Lane	May-06	May-06
216	OBDP	14037	I-5: Sodom Ditch -Calapooia Oflow - Bundle 216	6	2	2 2	2	Linn	Aug-05	May-07
217	OBDP	14038	OR 58: Odell Creek - Crescent Creek - Bundle 217	2		2	2,4	Klamath	Sep-04	Dec-05
218	OBDP	14039	OR 58: Willamette Relief - Logging Rd - Bundle 218	8	2	2 4	2	Lane	Aug-05	Mar-07
219	OBDP	14257	I-84: 102nd Ave O'xing - Bundle 219	1	1		1	Multnomah	---	---
220	OBDP	14259	I-5: Willamette River Bridge - Bundle 220	1		1	2	Lane	May-08	Dec-09
221	OBDP	14258	OR 58: US 97 Overcrossing - Bundle 221	1		1	4	Klamath	Aug-05	Dec-06
222	ODOT	15182	I-84: Rock Creek - Hostetter Way - Bundle 222	2		2	4	Wasco	Jul-06	Apr-07
224	OBDP	15644	I-84: Exit 64 (Hood River) - Bundle 224	1		1	1	Hood River	Aug-08	Oct-09
225	OBDP	15733	I-84: Hood River - Mosier Creek - Bundle 225	1		1	4	Hood River, Wasco	Nov-05	Jun-08
251	ODOT	14197	I-5: Bellline Interchange - Bundle 251	2		2	2	Lane	Dec-04	Feb-06
252	ODOT	14145	OR58: Salt Creek Half Viaduct #07188 - Bundle 252	1		1	2	Lane	Oct-05	May-07
255	ODOT	10352	I-5: N Jefferson Intch-N Albany Intch (SB) - Bundle 255	3		3	2	Linn, Marion	Sep-02	Jan-04
256	ODOT	13429	I-84/US-395: Stanfield Interchange Improvements - Bundle 256	1		1	5	Umatilla	May-04	Feb-06
301	OBDP	14040	I-5: Eagle Mill Rd - Neil Creek Rd - Bundle 301	5		5	3	Jackson	May-06	Jan-08
302	OBDP	14041	I-5: Creek & County - Central Point - Bundle 302	4	1	1 2	3	Jackson	Dec-05	May-07
303	OBDP	14042	I-5: S. Wolf Creek - Foothills Blvd - Bundle 303	13	6	6 1	3	Josephine	Sep-05	Feb-07
304	OBDP	14043	I-5: Louse Creek - US 199 - Bundle 304	3		3	3	Josephine	Jun-06	Dec-07
306	OBDP	14047	I-5: Weaver (D/B) - Bundle 306	7		2 5	3	Douglas	Oct-06	Oct-06
307	OBDP	14048	I-5/OR 42: Winston - McLain Ave - Bundle 307	5	2	2 1	3	Douglas	Dec-06	May-09
308	ODOT	14049	I-5:N.Umpqua River Bridges(Winchester)-Bundle 308	2		2	3	Douglas	Dec-06	Sep-08
309	OBDP	14050	I-5: Rice Hill Frtg Rd-Comstock Cem Rd-Bundle 309	7	1	6	3	Douglas	May-07	Apr-08
310	OBDP	14051	I-5:Coast Fork Willamette-Martin Creek-Bundle 310	5		5	2	Lane	Apr-06	Aug-08
312	OBDP	14053	I-5: Camas Swale - Saginaw Road - Bundle 312	8	5	3	2	Lane	Oct-05	Mar-08
313	OBDP	14260	I-5: Homestead to S Gold Hill - Bundle 313	5		5	3	Jackson	Nov-06	Aug-08
314	OBDP	14641	I-5: N Ashland Intchg - Greensprings - Bundle 314	2		1 1	3	Jackson	Aug-08	Apr-10
315	OBDP	14642	I-5: Canyonville - Glendale Intch - Bundle 315	2		1 1	3	Douglas	Dec-05	Oct-07
351	ODOT	12365	I-5: Graves Creek Bridge Replacement - Bundle 351	1		1	3	Josephine	Oct-02	May-03
352	ODOT	12401	I-5: S. Umpqua R. & CORP (Shady) - Bundle 352	1		1	3	Douglas	Sep-02	Feb-04
353	ODOT	13467	I-5: Sutherlin to Roseburg (D/B) - Bundle 353	5		2 3	3	Douglas	Nov-04	Nov-04
355	ODOT	12707	I-5:Exit99 Intchg Imprv & Bridge Rplcmts-Bundle 355	2		2	3	Douglas	Oct-03	May-06
357	ODOT	15186	I-5: Del Rio Rd/Winchester Interchange -Bundle 357	1		1	3	Douglas	Mar-06	Dec-09
400	OBDP	13312	Stage 4 Bridges Moved to No Work - Bundle 400	12	12		1,2,3,5	(multiple counties)	---	---
401	OBDP	14221	OR38: Elk Cr. - Hardscrabble Cr. (D/B) - Bundle 401	5		5	3	Douglas	Dec-06	Dec-06
404	ODOT	14224	OR31/US395: Cattlepass - Crooked Cr. - Bundle 404	2		2	4	Lake	Apr-07	May-08
405	ODOT	14225	OR42:Beaver Cr-Mid Fork Coquille R - Bundle 405	10	2	8	3	Coos, Douglas	Jun-07	Nov-09
409	OBDP	14229	US20: Beaver Creek - Marys River - Bundle 409	8	1	7	2	Benton, Lincoln	Nov-06	Apr-10
414	ODOT	14610	US395:McKay Cr - Silvies Slough D/B-Bundle 414	10	2	1 7	5	Grant, Harney, Umatilla	May-08	May-08
415	OBDP	14609	US30: Big Creek - Tide Creek - Bundle 415	5	1	4	1,2	Clatsop, Columbia	Apr-07	Apr-09
426	ODOT	15815	OR 19: Mule Shoe Cr - US 26: Dixie Cr - Bundle 426	10		10	4,5	Grant, Wheeler	Jan-09	Jan-10
450	OBDP	13312	Crossovers - No Work	1	1		3	Douglas	---	---
451	OBDP	13312	Olalla Creek, Hwy 35 (Upper Lookingglass) - No Work	1	1		3	Douglas	---	---
452	ODOT	14543	US20: Yaquina River - Bundle 452	1	1		2	Lincoln	---	---
453	ODOT	14149	US97: Willowdale - Madras Bridges - Bundle 453	2		1	4	Jefferson	Feb-05	Nov-06
454	ODOT	13225	US20: Pioneer Mtn - Eddyville (D/B) - Bundle 454	1		1	2	Lincoln	May-05	May-05
457	ODOT	14227	OR7: Powder River - Bundle 457	2		2	5	Baker	Jul-06	Apr-09
459	ODOT	15530	US30:Lower Columbia River Hwy @ Van Street - Bundle 459	1		1	1	Columbia	Jun-07	Aug-10
460	ODOT	14228	OR82/OR244: Grande Ronde - Wallowa R - Bundle 460	5	2	1 2	5	Union, Wallowa	Jan-08	Mar-10
506	OBDP	15227	OR126: Eugene Water Board Canal - Bundle 506	1	1		2	Lane	---	---
508	OBDP	15228	I-5:Elkhead Rd - OR126:Knowles Cr D/B - Bundle 508	7		2 5	2,3	Douglas, Lane	Jan-09	Jan-09
509	OBDP	15328	OR200: Bear Cr.-S. Fork Siuslaw River - Bundle 509	5	2	3	2	Lane	Oct-08	Mar-10
510	OBDP	16301	OR6: Wilson R (Mills)-Devils Lake Fork-Bundle 510	4		2 2	1,2	Tillamook	Mar-09	Apr-10
511	OBDP	16302	US26: East Fork Dairy Cr - McKay Cr - Bundle 511	4	1	1 2	1	Multnomah, Washington	Feb-09	Apr-10
552	ODOT	13313	US199: Elk Creek - Bundle 552	1	1		3	Josephine	---	---
553	ODOT	14509	US101: COR (North Bend) - Bundle 553	1	1		3	Coos	---	---
556	ODOT	13069	US 26: OR 217 - Sylvan Interchange - Bundle 556	1		1	1	Washington	May-02	Apr-03
557	ODOT	11816	US199:E/W Fork Illinois R. Brdg Rplcmts-Bundle 557	2		2	3	Josephine	Aug-02	Apr-05
558	ODOT	14232	US26: Kern Creek - Lancaster Creek - Bundle 558	2		2	5	Malheur	Sep-07	Mar-09
559	ODOT	14235	US20: Soda Fork - Bundle 559	1	1		2	Linn	---	---
560	ODOT	14608	OR230/OR138: North Umpqua - Upper Rogue - Bundle 560	4		3 1	3	Douglas, Jackson	Aug-08	Aug-10

NOTES:

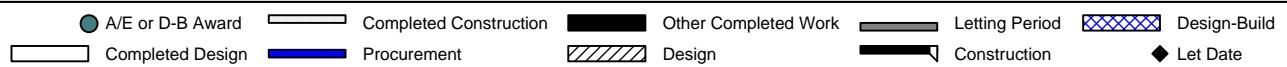
Bundle numbers correspond to program stage construction bundles. For example, Bundle 102 is in Stage 1, and "A" represents Stage 1A.
Updated bundle information is posted to the bridge program web site as it becomes available: http://egov.oregon.gov/ODOT/HWY/OTIA/bridge_delivery.shtml.
"D-B" represents a design-build bundle.

OTIA III MASTER COST LOADED SCHEDULE

Updated through September, 2008 Month End



Notes: All future dates are forecast dates, as of the period end. An "A" after a date indicates an "Actual" date in the past. Bridge counts include only OTIA III bridges.

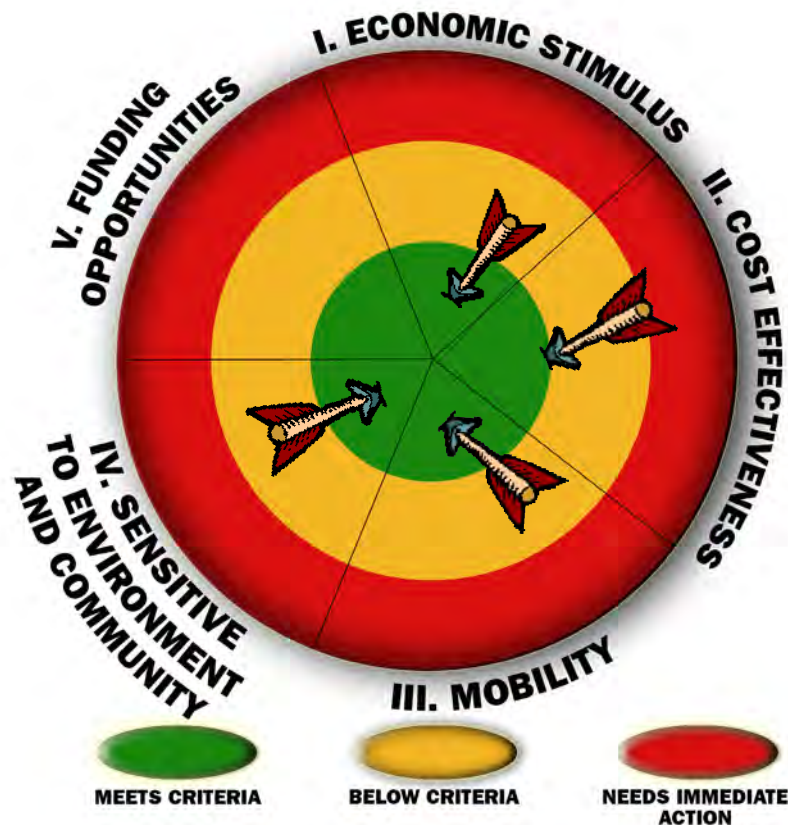


PERFORMANCE MEASUREMENT

Performance Measures for Regular Reporting

Each month, program managers collect data and report on information relevant to CS³ and the bridge program goals. Some of these performance measures provide valuable information to program and project managers in making day-to-day management decisions. Other performance measures are regularly reported to ODOT, the legislature, and stakeholders and convey the overall quality of the bridge program.

The Bull's Eye graphic below presents a summary of the performance measures reported on the following page. The location of the arrow is determined by averaging the reported performance measures in each goal area. The intent of the Bull's Eye graphic is to illustrate how the goals are balanced and interrelated. As the program continues to grow, the performance measures reported here will be assessed for the quality of the information provided. Every six months, ODOT and OBDP may modify the reporting methodologies for the performance measures. A full list of performance measures and their methodologies is available in the CS³ Performance Measure Framework on the Oregon Bridge Delivery Partners web site: www.obdp.org.



September 2008 CS³ Performance Measures

Methodology Number*	Outcome Measure	August 2008	September 2008	Brief Description of Activity
Goal 1. Stimulate Oregon's economy				
#4	Total value of design and construction contracts expended	R	R	From July 2008 to September 2008, there was a positive 27.2 percent average variance between the total value of contracts planned to be let versus contracts actually expended. The status is red because the variance is greater than 20 percent.
#5	Program management expenditures for Oregon vs. non-Oregon firms	G	G	OBDP spent 94.8 percent of program expenditures on Oregon firms in September 2008.
Goal 2. Employ efficient and cost-effective delivery practices				
#18	Number of design-bid-build bridges with design phase contractually completed	G	G	To date, 100 percent of the design phase of planned design-bid-build bridges is contractually complete.
#19	Number of design-bid-build bridges with construction phase contractually completed	G	G	To date, 92 percent of the construction phase of planned design-bid-build bridges is contractually complete.
#20	Number of design-build bridges contractually completed	G	G	To date, 100 percent of the planned design-build bridges are contractually complete.
#21	Percent of bridges on schedule for OTIA III State Bridge Delivery Program	Y	Y	87 percent of OTIA III bridges are on schedule. This represents a 1 percent increase from last month.
#22	Percent of bridges on budget for OTIA III State Bridge Delivery Program	Y	Y	89 percent of OTIA III bridges are on budget. This represents a 3 percent increase from last month..
Goal 3. Maintain freight mobility/keep traffic moving				
#27	Total travel time through corridor			
#27A	I-5 North Corridor / OR 58 (US 97) to Washington State Line	G	G	Corridor delays are in alignment with corridor delay threshold.
#27B	I-5 South Corridor / OR 58 (Eugene, OR) to California State Line	G	G	Corridor delays are in alignment with corridor delay threshold.
#27C	I-84 Corridor I-205 (Portland, OR) to Idaho State Line	G	G	Corridor delays are in alignment with corridor delay threshold.
#27D	US 26 / US 97 I-205 (Clackamas) to California State Line	G	G	Corridor delays are in alignment with corridor delay threshold.
Goal 4. Build projects sensitive to communities and their landscape				
#36	Percent of projects using environmental programmatic permitting	G	G	96.4 percent of eligible bridges are using the environmental programmatic permitting process.
#37	Percent of projects with permit amendments and variances requested that lead to greater environmental impact	G	G	No construction projects requested permit amendments or variances that lead to greater environmental impacts.

Methodology Number*	Outcome Measure	August 2008	September 2008	Brief Description of Activity
Goal 5. Capitalize on funding opportunities				
#43	Percent of Program funded by alternative sources	N/A	N/A	No outcome measures in development

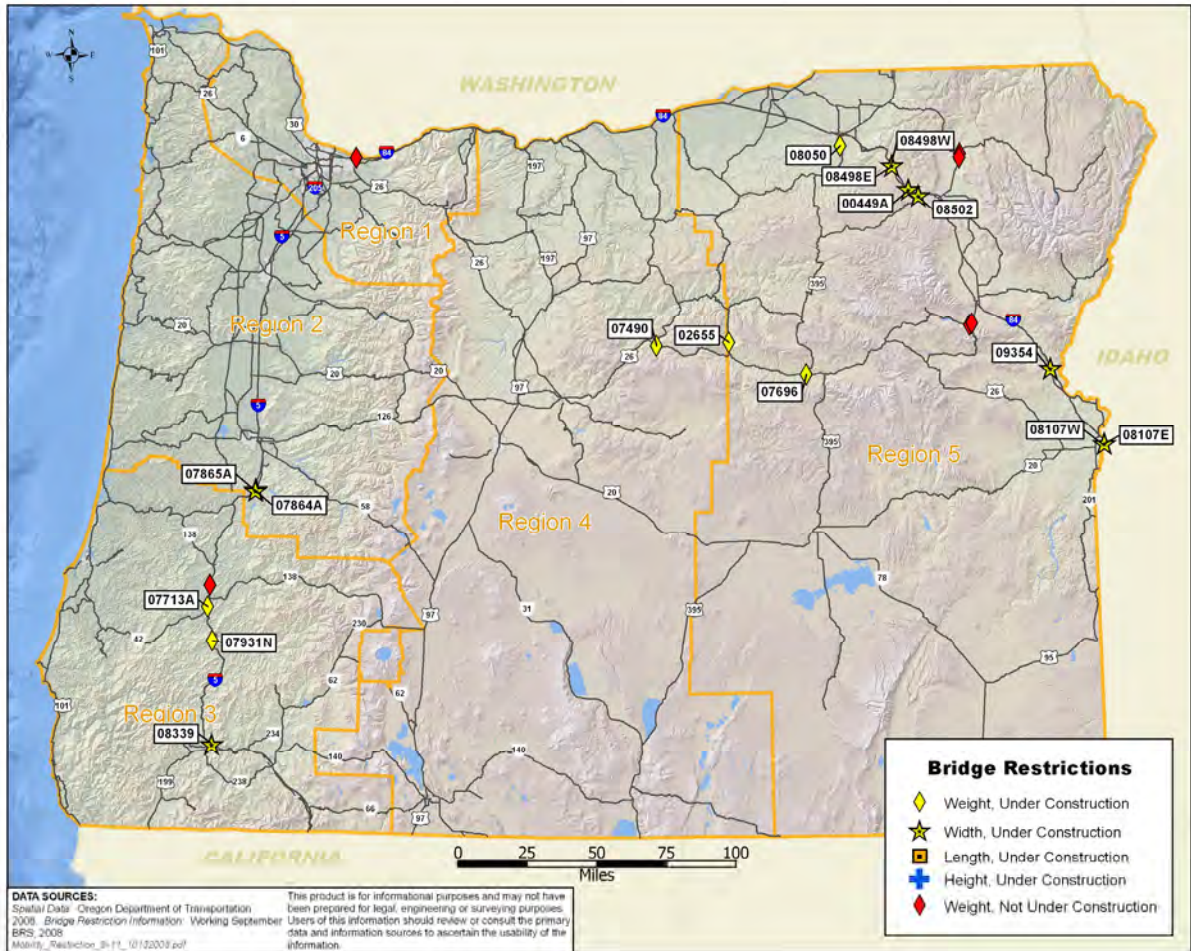
* This refers to the outcome measure number in the CS³ Performance Measures Framework. This document contains the methodology and targets for all performance measures. It can be found at: www.obdp.org

Indicator Measures

Goal 3. Maintain freight mobility/keep traffic moving

Location of bridges under construction with height, width and/or weight restrictions:

#15



OTIA III State Bridge Delivery Program

13-MONTH LOOK AHEAD

Updated through September 2008 month end

(Note: * indicates date has been locked until changes are approved)

Activity Name	Target	Current Forecast	[ID]	Qtr 3, 2008			Qtr 4, 2008			Qtr 1, 2009			Qtr 2, 2009			Qtr 3, 2009			Qtr 4, 2009			2010
				Jul	Aug	Sep	Oct	Nov	Dec	Jan	Feb	Mar	Apr	May	Jun	Jul	Aug	Sep	Oct	Nov	Dec	Jan
DESIGN/BUILD PROCUREMENT				01/15/09	01/15/09*																	
508 NTP (I-5: Elkhead Rd - OR 126: Knowles Cr (D/B))	01/15/09	01/15/09*	5																			
DESIGN PROCUREMENT				03/11/09	02/09/09																	
224 A&E NTP (I-84: Exit 64 (Hood River))	08/01/08	08/08/08 A	2				08/08/08 A															
560 Kick-off Meeting (OR230/OR138: North Umpqua - Upper Rogue)	08/18/08	05/08/08 A	R				05/08/08 A															
314 A&E NTP (I-5: N Ashland Intchg - Greensprings)	08/25/08	10/10/08	3																			
509 A&E NTP (OR200: Bear Cr. - S. Fork Siuslaw River - Bundle 509)	10/06/08	11/20/08	5																			
426 A&E NTP (OR 19: Mule Shoe Cr - US 26: Dixie Cr - Bundle 426)	01/12/09	08/04/08 A	R																			
511 A&E NTP (US26: East Fork Dairy Cr - McKay Cr)	02/09/09	02/09/09*	5																			
510 A&E NTP (OR6: Wilson R (Mills)-Devils Lake Fork)	03/11/09	11/10/08*	5																			
CONSTRUCTION LETTING				01/21/10	01/21/10																	
313 Bid Opening / Let Date (I-5: Homestead to S Gold Hill)	08/14/08	08/14/08 A	3				08/14/08 A															
308 Bid Opening / Let Date (I-5: N. Umpqua River Bridges (Winchester))	09/25/08	09/25/08 A	3																			
207 Bid Opening / Let Date (I-84: The Dalles - Fifteen Mile Creek - Bundle 207)	12/04/08	01/15/09*	2																			
209 Bid Opening / Let Date (I-84: Dodson - Tanner Creek)	02/12/09	03/12/09*	2																			
558 Bid Opening / Let Date (US 26: Kern Creek - Lancaster Creek)	03/12/09	03/12/09*	R																			
210 Bid Opening / Let Date (I-84: Sandy River - Jordan Rd)	03/19/09	05/14/09	2																			
457 Bid Opening / Let Date (OR 7: Powder River)	04/02/09	04/02/09*	R																			
415 Bid Opening / Let Date (US 30: Big Creek - Tide Creek)	04/09/09	04/09/09*	4																			
307 Bid Opening / Let Date (I-5/OR 42: Winston - McLain Ave)	05/21/09	05/21/09	3																			
224 Bid Opening / Let Date (I-84: Exit 64 (Hood River))	10/15/09	10/15/09	2																			
405 Bid Opening / Let Date (OR 42: Beaver Cr - Mid Fork Coquille R)	11/12/09	11/12/09*	4																			
220 GMP Negotiations Complete (I-5: Willamette River Bridge) = LET DATE	12/10/09	12/10/09	2																			
357 Bid Opening / Let Date (I-5: Del Rio Rd/Winchester Interchange)	12/17/09	12/17/09*	R																			
426 Bid Opening / Let Date (OR 19: Mule Shoe Cr - US 26: Dixie Cr - Bundle 426)	01/21/10	01/21/10*	R																			
CONSTRUCTION				12/31/09	12/12/12																	
211 Total Project Complete (I-5: Wilsonville - Hayesville Intchg (D/B))	07/11/08	06/19/08 A	2				06/19/08 A															
353 Total Project Complete (I-5: Sutherlin to Roseburg (D/B))	07/31/08	04/17/08 A	R				04/17/08 A															
212 Construction Complete (2nd Notice) (I-5: N. Santiam - Kuebler Blvd. (Salem))	07/31/08	09/03/08 A	2																			
202 Construction Complete (2nd Notice) (I-84: Stanton Blvd - Snake River)	10/31/08	10/31/08*	2																			
A06 Construction Complete (2nd Notice) (I-5: Seven Oaks Interchange)	10/31/08	06/30/09*	R																			
252 Construction Complete (2nd Notice) (OR 58: Salt Creek Half Viaduct #07188)	10/31/08	12/12/12*	R																			
A51 Construction Complete (2nd Notice) (US 26: Rush Creek - Antone)	10/31/08	10/31/08*	R																			
251 Construction Complete (2nd Notice) (I-5: Beltline Interchange)	11/28/08	11/28/08*	R																			
256 Construction Complete (2nd Notice) (I-84/US-395: Stanfield Interchange Improvements)	11/30/08	10/30/08*	R																			
206 Construction Complete (2nd Notice) (I-84: Irrigon Junction - Hilgard Intchg)	11/30/08	11/30/08*	2																			
302 Construction Complete (2nd Notice) (I-5: Creek & County - Central Point)	03/06/09	05/15/09*	3																			
315 Construction Complete (2nd Notice) (I-5: Canyonville - Glendale Intch)	04/03/09	04/03/09*	3																			
303 Construction Complete (2nd Notice) (I-5: S. Wolf Creek - Foothills Blvd)	05/22/09	05/22/09*	3																			
218 Construction Complete (2nd Notice) (OR 58: Willamette Relief - Logging Rd)	05/31/09	05/31/09*	2																			
A04 Construction Complete (2nd Notice) (I-5: Whiteaker Ave - London Rd)	06/26/09	06/26/09*	1																			
309 Construction Complete (2nd Notice) (I-5: Rice Hill Frtg Rd - Comstock Cem Rd)	06/30/09	06/30/09*	3																			
216 Construction Complete (2nd Notice) (I-5: Sodom Ditch - Calapooia Oflow)	09/10/09	11/06/09*	2																			
313 Construction Complete (2nd Notice) (I-5: Homestead to S Gold Hill)	09/30/09	09/30/09*	3																			
404 Construction Complete (2nd Notice) (OR 31/US 395: Cattlepass - Crooked Cr.)	10/05/09	10/05/09	R																			
401 Total Project Complete (OR 38: Elk Cr. - Hardscrabble Cr. (D/B))	10/15/09	12/31/08*	4																			
205 Construction Complete (2nd Notice) (I-84: Pendleton - North Powder)	10/31/09	10/31/09*	2																			
A05 Construction Complete (2nd Notice) (US 26: Ochoco Creek - Bridge Creek)	11/15/09	11/15/09*	R																			
301 Construction Complete (2nd Notice) (I-5: Eagle Mill Rd - Neil Creek Rd)	11/15/09	11/15/09*	3																			
215 Total Project Complete (I-5: McKenzie R. (Spores) - Goshen Grade (D/B))	11/30/09	11/30/09*	2																			
306 Total Project Complete (I-5: Weaver (D/B))	12/31/09	12/31/09*	3																			
312 Construction Complete (2nd Notice) (I-5: Camas Swale - Saginaw Road)	12/31/09	12/31/09*	3																			

FOR INFORMATION ONLY

ID 1-5: Represents Stage. CEI by OBDP.

ID "R": CEI by ODOT/Region.

◆ Current Forecast
 ▲ Target Schedule