

Clackamas County

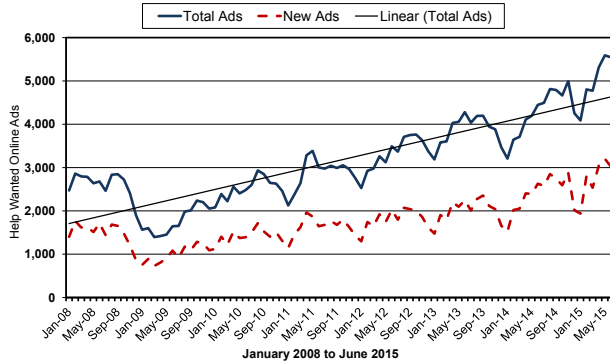
ECONOMIC INDICATORS

July 2015



Demand for jobs continues on the up-swing.

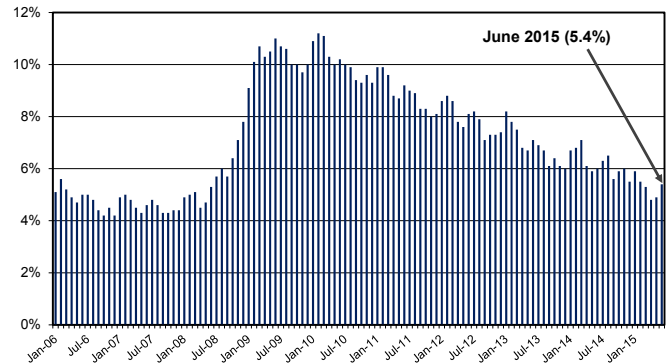
The Conference Board's Help-Wanted Online Ads Clackamas County (Not Seasonally Adjusted)



Source: The Conference Board Help Wanted Online™ (HWOL)

Unemployment rate was at 5.4 percent in June.

Unemployment Rate, Clackamas County January 2006 to June 2015



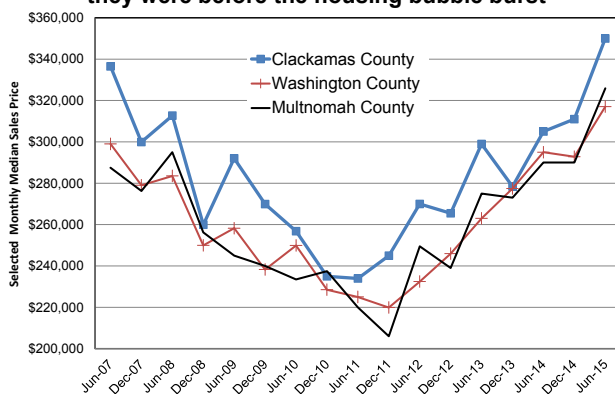
Industry and Employment Trends

Clackamas County's Help Wanted Online Ads (HWOL) increased by nearly 1,100 or 24.7 percent from a year ago. The HWOL data series measures the number of new, first-time online jobs and jobs reposted from the previous month on more than 1,200 major Internet job boards and smaller job boards that serve niche markets and smaller geographic areas. The highest demand openings were for registered nurses, public relations/fundraising managers, retail salesperson, and truck drivers.

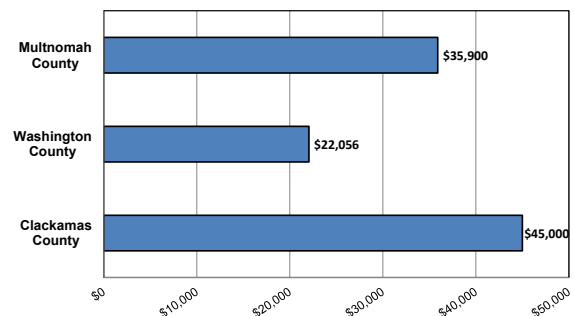
The unemployment rate in Clackamas County increased from 4.9 percent in May to 5.4 percent in June. This was due to both an increase in the labor force and a slight decrease in the number of people employed.

Housing prices have increased by nearly 15 percent during the last 12 months in Clackamas County.

Housing prices are headed back up to where they were before the housing bubble burst



Change in Median Sales Price June 2014 to June 2015



Source: Regional Multiple Listing Service (RMLS)

Housing Statistics

Median housing sales prices in Clackamas County continue to rise and have increased by \$45,000 or 14.8 percent during the last 12 months. Multnomah and Washington counties have also seen a significant increase in housing prices which increased by \$35,900 and \$22,056, respectively.

According to the RMLS Market Action report, June's housing sales in the Port-

Click on links to read stories:

[How Many Workers in Oregon are Underutilized?](#)

To be added to the distribution list:

Contact: Lynn Wallis, Workforce Analyst (971) 804-2100

Lynn.N.Wallis@oregon.gov