

# Washington County Economic Indicators

## January 2016

(all data from Oregon Employment Department unless mentioned otherwise)



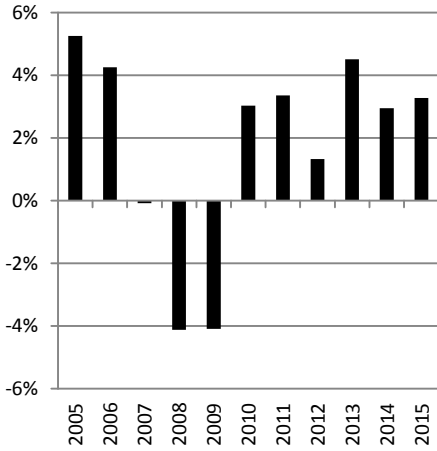
Quality Information, Informed Choices

# Labor Market Information

www.QualityInfo.org

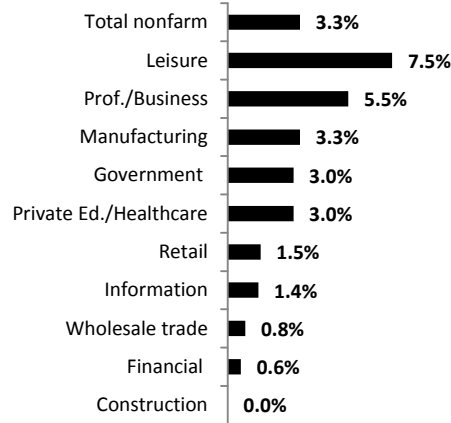
### Historical Job Growth

2005 to December 2015; change from a year earlier



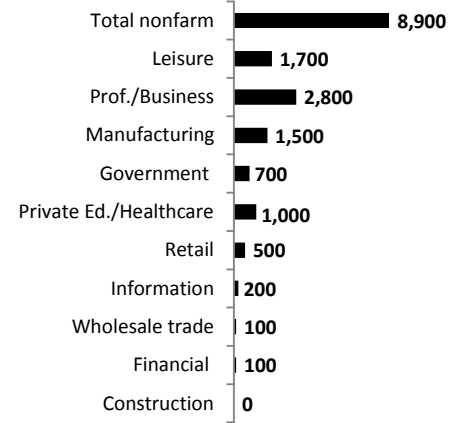
### Job Growth Rates by Industry

December; change from a year earlier



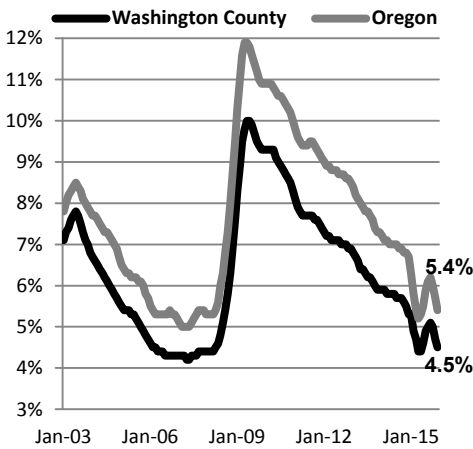
### Net Job Growth by Industry

December; change from a year earlier



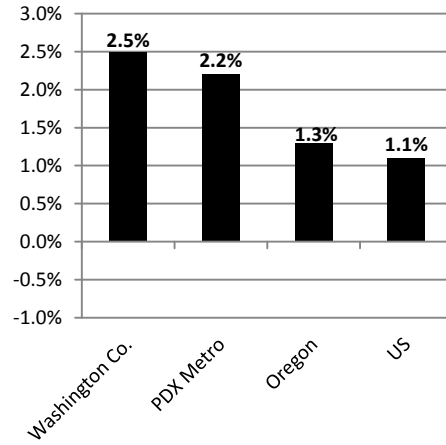
### Unemployment Rates

December; seasonally adjusted



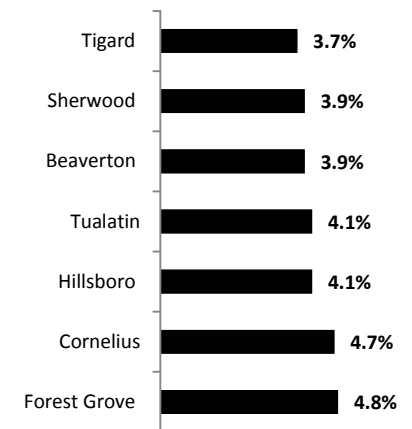
### Labor Force Growth

December; increase on a year earlier



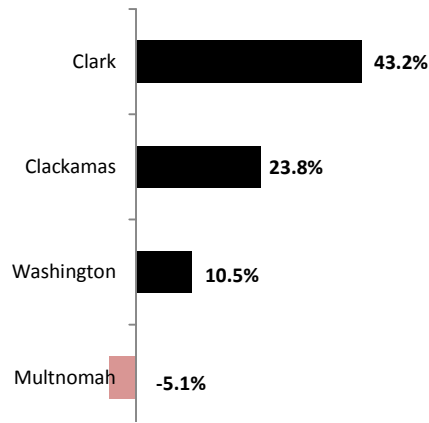
### Unemployment Rates by City

December; non-seasonally adjusted (seasonally adjusted not available at city level)



### Building Permit Changes

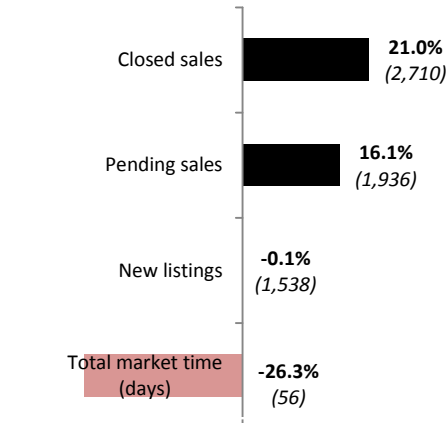
By county; 2015; increase on a year earlier



Source: US Census Building Permit Survey

### Residential Housing Highlights

Portland metro; December; percent increase on a year earlier and November 2015 data



Source: RMLS Market Action

### Average Annual Wage by City

2014

