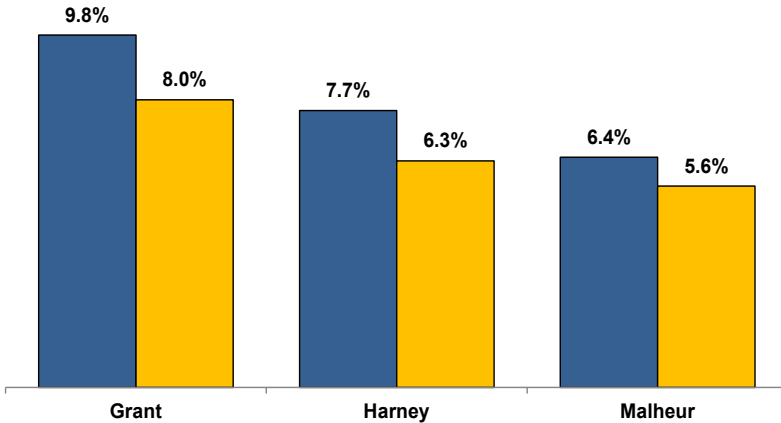


Unemployment Rates (Seasonally Adjusted)

■ March 2015 ■ March 2016



Unemployment Rate News

Malheur County's seasonally adjusted unemployment rate for March 2016 was 5.6 percent while Harney County's rate came in at 6.3 percent and Grant County at 8.0 percent. All were above Oregon's statewide rate of 4.5 percent and the national rate of 5.0 percent.

All three counties had lower seasonally adjusted unemployment rates in March 2016 than the previous March. The March 2016 rate for Harney County is not only the lowest March rate since comparable statistics began in 1990 but the lowest for any month. For Malheur County, the only lower March rate was in 1990. Grant County saw the lowest rate for the month since March 2007.

Grant County (-1.8 percentage points) ranked in a tie for first among Oregon's 36 counties for over-the-year improvement with Harney County (-1.4) tied for fifth and Malheur County (-0.8) sitting in a tie for 21st.

Nonfarm Employment Change

March 2015 to March 2016

Grant County gained an estimated 30 jobs over the year. The private sector saw gains and losses across industries balance for no net change. The public sector increased by 30 jobs with state and local government adding jobs while federal government went unchanged.

Harney County employment increased by an estimated 80 jobs over the year. The private sector added 40 jobs led by gains in educational and health services. The only private industry to lose jobs was professional and business services. The public sector also added 40 jobs, with gains in local and federal government while state government was unchanged.

Malheur County added an estimated 190 jobs over the year. The private sector was responsible for most of the gain, adding 170 jobs, led by solid increases in manufacturing and educational and health services. The public sector increased by 20 jobs with gains in local and federal government overcoming losses in state government.

Notable Industry Gains and Losses

Over-the-Year Employment Change from March 2015



Grant

Mining/Logging (+20)
Professional/Business Services (+20)
Private Education/Health Services (+10)

Harney

Private Education/Health Services (+30)
Local Government (+30)
Wholesale Trade (+10)
Leisure/Hospitality (+10)

Malheur

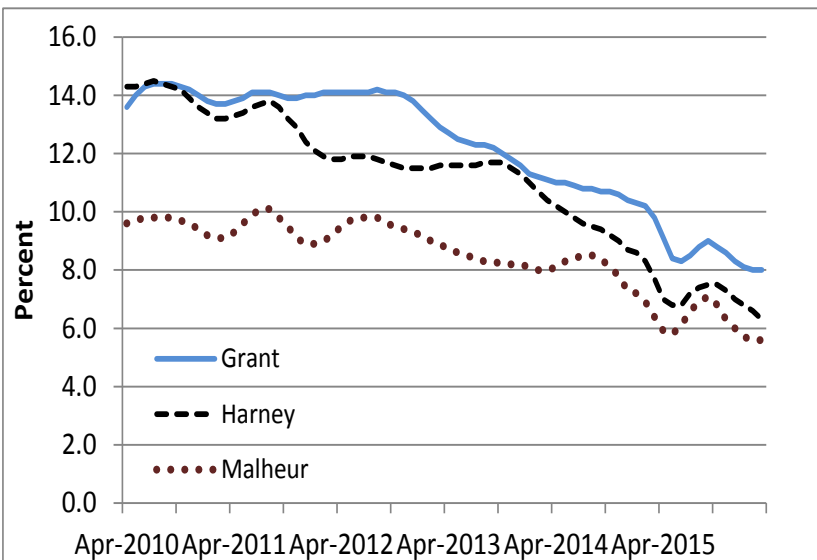
Manufacturing (+120)
Private Education/Health Services (+110)
Wholesale Trade (+30)

Manufacturing (-20)
Leisure/Hospitality (-20)
Construction (-10)

Professional/Business Services (-10)

Leisure/Hospitality (-50)
Transportation/Warehousing/Utilities (-40)
Retail Trade (-20)

Unemployment rate continues downward trend



Want to learn more about the Oregon economy?

Read our blog at: oregonemployment.blogspot.com/

Follow us on Twitter at: [Twitter.com/ORemployment](https://twitter.com/ORemployment)

Visit our web site at: www.QualityInfo.org

For more economic or labor market data about Grant, Harney, or Malheur counties, contact:

Tony Wendel, Workforce Analyst

Desk: 541-276-9050 ext. 232 Cell: 541-667-7027

E-mail: Tony.A.Wendel@oregon.gov

Chris Rich, Regional Economist

Desk: 541-963-7111 ext. 226 Cell: 541-519-0315

E-mail: Christopher.M.Rich@oregon.gov

Want to be added to the monthly distribution list?

E-mail me at: Tony.A.Wendel@oregon.gov