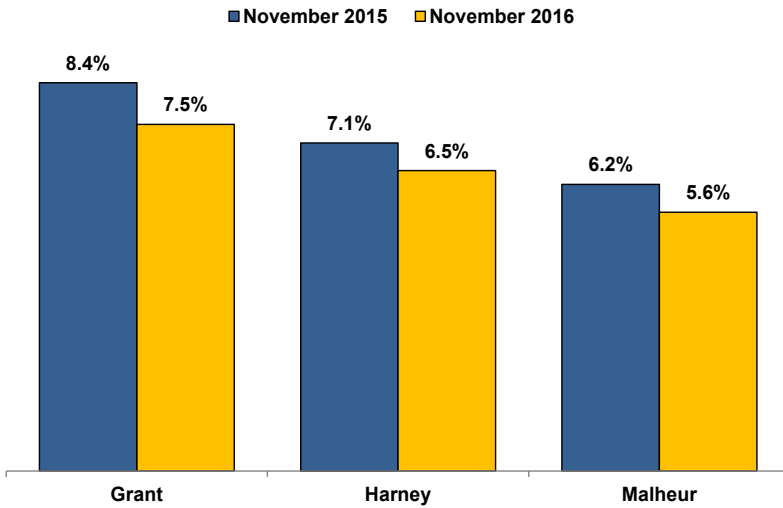


Unemployment Rates (Seasonally Adjusted)



Unemployment Rate News

Malheur County's seasonally adjusted unemployment rate for November 2016 was 5.6 percent while Harney County's rate came in at 6.5 percent and Grant County at 7.5 percent. All three were above Oregon's statewide rate of 5.0 percent and the national rate of 4.6 percent.

All three counties had lower seasonally adjusted unemployment rates in November 2016 than the previous November. The November 2016 rates for Grant County and Harney County are the lowest November rates since comparable statistics began in 1990. Malheur County saw the lowest rate for the month since November 2007.

Grant County (-0.9 percentage point) ranked in a three-way tie for ninth among Oregon's 36 counties for over-the-year improvement. Malheur County (-0.6) and Harney County (-0.6) sat in a five-way tie for 17th.

Nonfarm Employment Change

November 2015 to November 2016

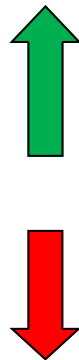
Grant County gained an estimated 20 jobs over the year. The private sector dropped 30 jobs with minor losses overcoming minor gains across industries. The public sector increased by 50 jobs with gains in local, state, and federal government.

Harney County employment increased by an estimated 20 jobs over the year. The private sector dropped 40 jobs led by losses in leisure and hospitality and retail trade. The public sector added 60 jobs, with gains in local, federal, and state government.

Malheur County added an estimated 620 jobs over the year. The private sector increased by 540 jobs led by gains in manufacturing and trade, transportation, and utilities. The only private industry to lose jobs was financial activities. The public sector added 80 jobs with gains in local, state, and federal government.

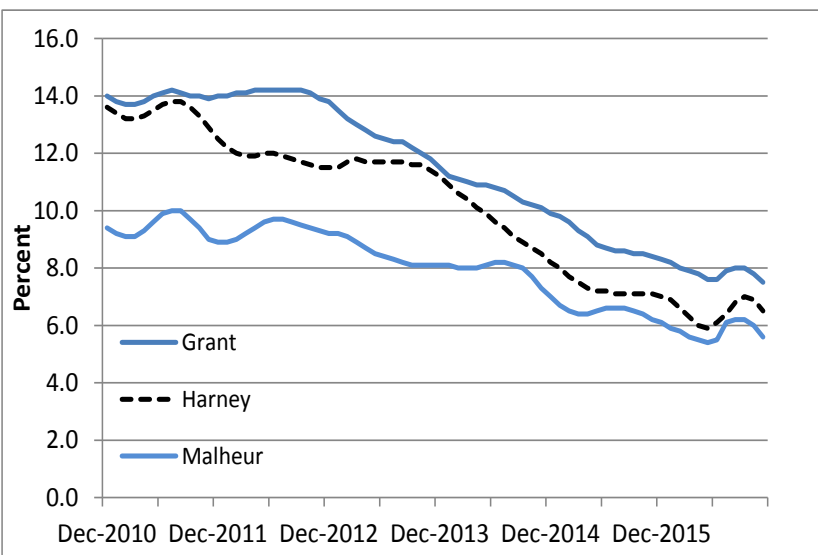
Notable Industry Gains and Losses

Over-the-Year Employment Change from November 2015



<u>Grant</u>	<u>Harney</u>	<u>Malheur</u>
Local Government (+30)	Local Government (+40)	Manufacturing (+150)
Retail Trade (+10)	Goods-Producing (+10)	Transportation/Warehousing/Utilities (+80)
Private Education/Health Services (+10)	Transportation/Warehousing/Utilities (+10)	Wholesale Trade (+70)
	State Government (+10)	Leisure/Hospitality (+60)
Manufacturing (-10)	Leisure/Hospitality (-20)	Financial Activities (-10)
Leisure/Hospitality (-10)	Retail Trade (-20)	
Financial Activities (-10)	Financial Activities (-10)	

Unemployment rate turns back down after slight upturn



Want to learn more about the Oregon economy?

Read our blog at: oregonemployment.blogspot.com/

Follow us on Twitter at: [Twitter.com/OREmployment](https://twitter.com/OREmployment)

Visit our web site at: www.QualityInfo.org

For more economic or labor market data about Grant, Harney or Malheur counties, contact:

Tony Wendel, Workforce Analyst

Desk: 541-276-9050 ext. 232 Cell: 541-667-7027

E-mail: Tony.A.Wendel@oregon.gov

Chris Rich, Regional Economist

Desk: 541-963-7111 ext. 226 Cell: 541-519-0315

E-mail: Christopher.M.Rich@oregon.gov

Want to be added to the monthly distribution list?

E-mail me at: Tony.A.Wendel@oregon.gov