

Oregon Health Authority

Public Health Division
Center for Public Health Practice

October 2012

MEMENTO MORBI

A Monthly Communicable Disease Surveillance Report

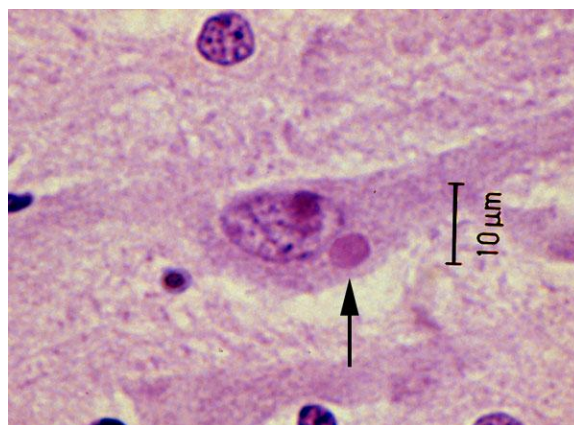
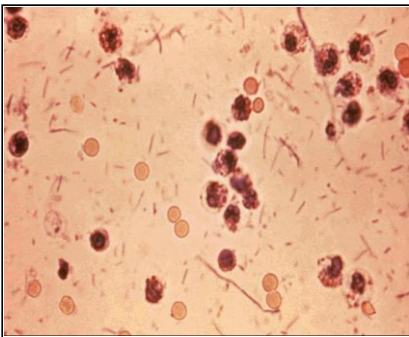
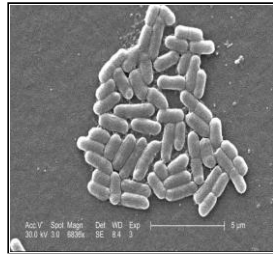


Table of Contents

About Memento Morbi	3
Notifiable Diseases by Month	4
Notifiable Diseases by County	6
Notifiable Diseases of Low Incidence	9
Sexually Transmitted Diseases: Chlamydia, gonorrhea, HIV, syphilis	10
Notifiable Diseases by Age, Sex, Race and County	11



About *Memento Morbi*

This monthly report contains an early source of infectious disease surveillance data for Oregon. These data are important for monitoring early trends of notifiable infectious diseases and for targeting prevention and control efforts. The purpose of this document is to summarize important information data users should know about the report to facilitate proper analysis and interpretation.

1. This report comprises compilations of data received by offices of the Oregon State Public Health Division (OSPHD).
2. The diseases reportable by law may increase or decrease over time.
3. The reporting status of diseases included may be determined by state law or be acquired through voluntary submissions.
4. Data are provisional and subject to change upon the completion of ongoing disease investigations.
5. *Memento Morbi* is prepared in the two weeks following the end of the calendar month; delayed case reports would be included in later issues. The same would apply to subsequent differences resulting from duplicates or erroneous data entries in individual reports.
6. Temporal distributions are generally based upon the date of onset or if unavailable, the next available date for epidemiologic purposes, including date of specimen collection, date reported to the local health department, or date reported to OSPHD. Exceptions include tuberculosis cases by date of report to CDC and HIV/AIDS
7. Starting in August of 2012, the STD data are now presented in more detail on the website <http://public.health.oregon.gov/DISEASES/CONDITIONS/COMMUNICABLEDISEASE/DISEASESURVEILLANCEDATA/STD/Pages/index.aspx#countyquarter>
8. Data pertaining to race and ethnicity may be incomplete and may have been collected differently for the various notifiable diseases and across time.

In Summary

These data are subject to change, reflecting recent entry of information received from reporting sources. Case counts reported by the HIV Program may differ for past years and vary with the date of abstraction from the case registry due to subsequent receipt of additional information regarding particular cases reported in Oregon, additional case reports for this time period, or changes in federal assignment of particular cases to specific states for reporting purposes.

Reported Cases of Selected Notifiable Diseases or Conditions in Oregon by Month
2012

	Jan	Feb	Mar	Apr	May	Jun	Jul	Aug	Sep	Oct	YTD
Botulism	0	0	0	0	0	0	4	1	1	1	7
Campylobacter	78	56	46	74	61	90	120	127	81	81	814
Ciguatera	0	0	0	1	0	0	0	0	0	0	1
Cryptosporidiosis	18	13	22	22	13	20	22	33	27	21	211
Dengue Fever	1	2	0	0	0	0	0	0	3	0	6
E. coli(STEC)	5	8	7	23	12	18	17	34	20	23	167
Ehrlichiosis	1	0	0	0	0	0	0	0	0	0	1
Encephalitis, SLE	0	0	0	0	0	0	0	0	1	0	1
Giardiasis	25	36	42	29	29	16	34	37	53	31	332
HIV_AIDS	25	24	19	27	17	21	35	26	4	0	198
HUS	0	0	0	5	1	0	1	1	5	2	15
Haemophilus influenza	7	7	4	13	5	4	4	6	3	5	58
Hantavirus pulmonary	0	0	0	0	1	0	1	0	0	0	2
Hepatitis A (acute)	0	1	0	0	0	0	0	1	0	0	2
Hepatitis B (acute)	4	3	2	4	0	0	4	3	1	1	22
Hepatitis B (chronic)	37	30	39	32	34	36	27	39	37	18	329
Hepatitis C (acute)	6	3	2	2	7	1	6	1	4	3	35
Hepatitis C (chronic)	395	440	407	437	427	350	381	362	378	430	4007
Legionellosis	4	2	4	2	4	2	2	5	3	1	29
Listeriosis	2	1	1	2	3	1	3	1	1	0	15
Lyme disease	4	4	5	6	1	4	11	4	7	7	53
Malaria	4	0	0	0	0	1	3	1	1	0	10
Measles	0	0	0	1	0	0	0	0	0	0	1
Meningococcal Disease	7	2	2	3	1	3	1	0	1	0	20
Mumps	0	0	0	0	0	0	0	0	1	2	3
Pertussis	22	30	48	66	170	158	142	132	54	30	852
Plague	0	0	0	0	0	1	0	1	0	0	2
Q fever	0	0	0	0	1	0	2	0	0	0	3
Relapsing Fever	0	0	0	1	0	0	1	1	1	0	4
Rocky Mtn Spotted fev	0	0	0	0	0	0	1	0	0	0	1
Salmonella	23	19	19	37	32	38	41	42	41	47	339
Shigella	5	7	5	7	3	6	11	22	4	7	77
Taeniasis	0	1	0	0	0	1	0	1	0	0	3
Tuberculosis	4	3	5	3	5	7	7	3	8	4	49
Typhus (murine)	0	0	0	0	0	0	0	1	0	0	1
Vibrio parahaemolytic	0	0	1	0	0	1	3	8	4	2	19
West Nile	0	0	0	0	0	0	0	4	4	5	13
Yersinia	3	0	3	3	2	6	0	2	0	1	20
YTD	680	692	683	800	829	785	884	899	748	722	7722

Reported Cases of Selected Notifiable Diseases or Conditions in Oregon by Month
2011

	Jan	Feb	Mar	Apr	May	Jun	Jul	Aug	Sep	Oct	YTD
Babesiosis	0	0	0	0	0	0	0	1	0	0	1
Botulism	0	1	0	0	0	0	1	0	0	0	2
Brucellosis	0	0	0	0	0	0	0	1	0	0	1
Campylobacter	69	51	54	61	81	114	107	130	97	80	844
Colorado Tick Fever	0	0	0	0	0	0	1	0	0	0	1
Cryptosporidiosis	11	14	16	18	20	24	14	21	15	19	172
Dengue Fever	0	0	0	0	0	1	1	0	2	0	4
E. coli(STEC)	9	1	4	7	5	8	19	24	14	22	113
Ehrlichiosis	0	0	0	0	0	1	1	1	1	1	5
Giardiasis	32	41	32	27	34	29	24	54	43	45	361
HIV/AIDS	23	20	37	32	21	21	24	13	13	15	219
HUS	1	0	0	1	0	0	0	4	0	2	8
Haemophilus influenza	10	3	16	9	4	4	8	3	2	5	64
Hantavirus pulmonary	0	1	1	0	0	0	0	0	0	0	2
Hepatitis A (acute)	1	1	0	0	2	1	0	0	1	3	9
Hepatitis B (acute)	3	2	3	2	3	5	4	3	4	0	29
Hepatitis B (chronic)	51	20	36	36	36	44	32	40	28	41	364
Hepatitis C (acute)	3	0	2	5	0	4	2	0	3	1	20
Hepatitis C (chronic)	448	488	496	465	466	465	414	488	415	449	4594
Legionellosis	1	1	1	0	2	2	1	3	5	5	21
Leptospirosis	0	0	0	0	0	0	1	0	0	0	1
Listeriosis	1	0	0	0	1	1	0	1	3	1	8
Lyme disease	1	1	3	1	1	5	5	7	4	3	31
Malaria	2	2	0	0	1	2	0	6	1	2	16
Measles	0	0	1	1	0	0	0	1	0	0	3
Meningococcal Disease	3	3	7	3	2	5	1	0	0	4	28
Mumps	1	2	0	0	0	0	0	1	0	0	4
Pertussis	22	16	18	23	24	31	42	33	51	21	281
Plague	0	0	0	0	0	0	0	0	1	0	1
Q fever	0	1	0	0	0	0	0	0	1	0	2
Salmonella	29	26	10	24	35	40	45	43	28	35	315
Shigella	6	3	3	10	2	1	3	5	8	11	52
Taeniasis	1	0	1	1	1	0	0	1	0	1	6
Tuberculosis	14	10	8	19	21	13	3	7	5	8	108
Vibrio parahaemolytic	0	0	0	0	0	0	2	2	1	1	6
Yersinia	1	2	4	3	2	0	2	1	0	0	15
YTD	743	710	753	748	764	821	757	894	746	775	7711

Reported Cases of Select Notifiable Diseases or Conditions in Oregon by County
January-October 2012

	Baker	Benton	Clackamas	Clatsop	Columbia	Coos	Crook	Curry	Deschutes	Douglas	Gilliam	Grant	Harney
Botulism	0	0	0	0	0	0	0	0	3	0	0	1	0
Campylobacter	3	29	77	8	7	12	3	3	44	16	1	3	1
Ciguatera	0	0	0	0	0	0	0	0	0	0	0	0	0
Cryptosporidiosis	1	4	26	1	5	1	0	0	0	12	0	0	0
Dengue Fever	0	0	0	0	0	0	0	0	1	0	0	0	0
E. coli(STEC)	0	4	21	1	2	1	4	0	8	12	0	0	2
Ehrlichiosis	0	0	0	0	0	1	0	0	0	0	0	0	0
Encephalitis, SLE	0	0	0	0	0	0	0	0	0	0	0	0	0
Giardiasis	0	7	16	2	2	4	0	1	23	11	0	0	1
HIV_AIDS	0	4	16	1	4	2	0	0	3	1	0	0	0
HUS	0	0	1	0	0	0	1	0	0	1	0	0	0
Haemophilus influenza	0	0	2	0	0	0	0	1	3	1	0	0	0
Hantavirus pulmonary	0	0	0	0	0	0	0	0	0	0	0	0	0
Hepatitis A (acute)	0	0	0	0	0	0	0	0	0	0	0	0	0
Hepatitis B (acute)	0	0	1	0	1	0	0	0	0	0	0	0	0
Hepatitis B (chronic)	0	7	24	3	0	2	0	2	5	2	1	0	0
Hepatitis C (acute)	0	2	3	0	0	0	0	0	2	3	0	0	1
Hepatitis C (chronic)	19	36	249	45	58	116	23	31	166	130	1	0	6
Legionellosis	0	0	6	0	1	0	0	0	1	1	0	0	0
Listeriosis	1	0	3	0	1	0	0	0	1	1	0	0	0
Lyme disease	0	5	1	0	1	2	0	0	1	8	0	0	0
Malaria	0	1	1	0	0	0	1	0	0	0	0	0	0
Measles	0	0	0	0	0	0	0	0	0	0	0	0	0
Meningococcal Disease	0	0	1	2	0	1	2	1	1	1	0	0	0
Mumps	0	0	0	0	0	0	0	0	0	0	0	0	0
Pertussis	0	17	82	21	8	6	0	0	3	0	0	0	2
Plague	0	0	0	0	0	0	2	0	0	0	0	0	0
Q fever	0	0	0	0	0	0	0	0	0	0	0	0	0
Relapsing Fever	0	1	0	0	0	0	0	0	1	0	0	0	0
Rocky Mtn Spotted fev	0	1	0	0	0	0	0	0	0	0	0	0	0
Salmonella	2	3	41	3	1	4	1	0	14	12	0	0	3
Shigella	0	0	1	12	0	2	0	0	0	0	0	0	0
Taeniasis	0	0	1	0	0	0	0	0	0	0	0	0	0
Tuberculosis	0	2	3	0	0	1	0	0	0	0	0	0	0
Typhus (murine)	0	0	0	0	0	0	0	0	0	0	0	0	0
Vibrio parahaemolytic	0	0	2	0	0	1	0	0	0	0	0	0	0
West Nile	0	0	0	0	0	1	0	0	1	0	0	0	0
Yersinia	0	0	4	0	0	1	0	0	0	0	0	0	0
All	26	123	582	99	91	158	37	39	281	212	3	4	16

Reported Cases of Select Notifiable Diseases or Conditions in Oregon by County
January-October 2012

	Hood River	Jackson	Jefferson	Josephine	Klamath	Lake	Lane	Lincoln	Linn	Malheur	Marion	Morrow	Multnomah
Botulism	0	0	0	0	0	0	1	0	0	0	0	0	1
Campylobacter	6	34	7	9	13	0	76	8	35	6	60	2	174
Ciguatera	0	0	0	0	0	0	0	0	0	0	0	0	1
Cryptosporidiosis	3	11	0	2	1	0	13	3	5	4	4	0	66
Dengue Fever	0	0	0	0	0	0	0	0	0	0	0	0	2
E. coli(STEC)	0	6	3	2	7	3	9	0	11	1	20	0	23
Ehrlichiosis	0	0	0	0	0	0	0	0	0	0	0	0	0
Encephalitis, SLE	0	0	0	0	0	0	0	0	0	1	0	0	0
Giardiasis	1	9	1	6	8	1	35	3	19	2	20	0	102
HIV_AIDS	0	9	0	1	1	0	7	1	2	0	10	0	106
HUS	0	1	0	1	1	0	1	0	0	0	2	0	4
Haemophilus influenza	0	5	1	2	1	0	6	1	1	0	10	0	12
Hantavirus pulmonary	0	0	1	0	0	0	0	0	1	0	0	0	0
Hepatitis A (acute)	0	0	0	0	1	0	0	0	0	0	0	0	0
Hepatitis B (acute)	0	0	0	0	0	0	4	1	1	1	2	0	3
Hepatitis B (chronic)	1	6	2	4	1	0	16	2	4	3	20	2	136
Hepatitis C (acute)	0	0	0	1	1	0	5	0	0	0	6	0	10
Hepatitis C (chronic)	13	213	47	88	59	8	381	69	128	61	355	6	1080
Legionellosis	0	2	0	1	0	0	4	1	0	0	0	0	6
Listeriosis	0	0	0	0	0	0	2	0	0	0	0	0	3
Lyme disease	1	5	0	14	0	0	3	0	1	0	0	0	7
Malaria	0	0	0	0	0	0	1	0	0	0	1	0	3
Measles	0	0	0	0	0	0	0	0	0	0	0	0	0
Meningococcal Disease	0	0	0	1	0	0	5	0	0	1	0	0	2
Mumps	0	0	0	0	0	0	1	0	0	0	0	0	1
Pertussis	6	3	0	3	0	0	26	6	18	11	46	1	237
Plague	0	0	0	0	0	0	0	0	0	0	0	0	0
Q fever	0	0	0	0	0	0	0	0	2	1	0	0	0
Relapsing Fever	0	0	0	0	0	0	0	0	0	0	0	0	2
Rocky Mtn Spotted fev	0	0	0	0	0	0	0	0	0	0	0	0	0
Salmonella	2	16	0	6	5	1	36	3	11	3	33	2	65
Shigella	0	1	0	0	0	0	5	1	0	0	8	0	30
Taeniasis	0	0	0	0	0	0	0	0	0	0	0	0	2
Tuberculosis	0	0	1	0	1	0	1	0	1	1	4	0	17
Typhus (murine)	0	0	0	0	0	0	0	0	0	0	0	0	0
Vibrio parahaemolytic	0	0	0	0	0	0	2	1	0	0	0	0	8
West Nile	0	0	0	0	0	0	1	0	0	8	0	0	1
Yersinia	0	2	0	1	0	0	0	0	0	0	4	0	4
All	33	323	63	142	100	13	641	100	240	104	605	13	2108

Reported Cases of Select Notifiable Diseases or Conditions in Oregon by County
January-October 2012

	Polk	Sherman	State Of O	Tillamook	Umatilla	Union	Wallowa	Warm Sprin	Wasco	Washington	Wheeler	Yamhill	All
Botulism	0	0	0	0	0	0	0	0	0	1	0	0	7
Campylobacter	16	0	0	5	10	7	3	1	5	110	0	20	814
Ciguatera	0	0	0	0	0	0	0	0	0	0	0	0	1
Cryptosporidiosis	0	0	0	8	2	0	0	0	0	38	0	1	211
Dengue Fever	0	0	0	0	0	0	0	0	0	3	0	0	6
E. coli(STEC)	2	0	0	1	2	0	1	0	1	14	0	6	167
Ehrlichiosis	0	0	0	0	0	0	0	0	0	0	0	0	1
Encephalitis, SLE	0	0	0	0	0	0	0	0	0	0	0	0	1
Giardiasis	6	0	0	0	11	4	0	0	2	29	0	6	332
HIV_AIDS	0	0	0	1	2	1	0	0	1	22	0	3	198
HUS	0	0	0	0	0	0	0	0	0	2	0	0	15
Haemophilus influenza	1	0	0	0	3	2	0	0	0	5	0	1	58
Hantavirus pulmonary	0	0	0	0	0	0	0	0	0	0	0	0	2
Hepatitis A (acute)	0	0	0	0	0	0	0	0	0	1	0	0	2
Hepatitis B (acute)	0	0	0	0	1	1	0	0	0	5	0	1	22
Hepatitis B (chronic)	3	0	1	2	3	4	0	0	1	69	0	3	329
Hepatitis C (acute)	0	0	0	0	0	0	0	0	0	1	0	0	35
Hepatitis C (chronic)	47	3	3	23	94	12	0	1	35	273	2	126	4007
Legionellosis	1	0	0	0	1	0	1	0	1	2	0	0	29
Listeriosis	0	0	0	0	0	1	0	0	0	2	0	0	15
Lyme disease	1	0	0	0	0	0	0	0	2	1	0	0	53
Malaria	0	0	0	0	0	0	0	0	0	2	0	0	10
Measles	0	0	0	0	0	0	0	0	0	1	0	0	1
Meningococcal Disease	0	0	0	0	0	0	0	0	1	1	0	0	20
Mumps	0	0	0	0	0	0	0	0	0	1	0	0	3
Pertussis	25	0	0	1	20	3	0	0	2	277	0	28	852
Plague	0	0	0	0	0	0	0	0	0	0	0	0	2
Q fever	0	0	0	0	0	0	0	0	0	0	0	0	3
Relapsing Fever	0	0	0	0	0	0	0	0	0	0	0	0	4
Rocky Mtn Spotted fev	0	0	0	0	0	0	0	0	0	0	0	0	1
Salmonella	7	0	0	3	3	2	0	1	4	41	0	11	339
Shigella	1	0	0	0	0	2	0	0	0	14	0	0	77
Taeniasis	0	0	0	0	0	0	0	0	0	0	0	0	3
Tuberculosis	1	0	0	0	1	0	0	0	0	14	0	1	49
Typhus (murine)	0	0	0	0	0	0	0	0	0	1	0	0	1
Vibrio parahaemolytic	0	0	0	0	0	0	0	0	0	5	0	0	19
West Nile	0	0	1	0	0	0	0	0	0	0	0	0	13
Yersinia	0	0	0	0	1	0	0	0	0	3	0	0	20
All	111	3	5	44	154	39	5	3	55	938	2	207	7722

Reported Cases of Low Incident Notifiable Diseases or Conditions by Year in Oregon
January-October

	2002	2003	2004	2005	2006	2007	2008	2009	2010	2011	2012	Total
African spotted fever	0	1	0	0	0	0	0	0	0	0	0	1
Babesiosis	0	0	0	0	0	0	0	1	0	1	0	2
Botulism	0	2	3	2	0	1	2	0	1	2	7	20
Brucellosis	0	0	0	1	0	1	1	3	1	1	0	8
Ciguatera	0	0	0	0	0	0	0	0	0	0	1	1
Colorado Tick Fever	0	0	1	0	0	0	3	1	0	1	0	6
Cyclosporiasis	0	0	0	25	1	0	0	0	0	0	0	26
Dengue Fever	0	0	0	7	2	3	6	4	4	4	6	36
Ehrlichiosis	0	0	0	0	1	1	1	3	0	5	1	12
Encephalitis, SLE	0	1	0	0	0	0	0	0	0	0	1	2
Filariasis	0	0	0	1	0	0	0	0	0	0	0	1
Hantavirus pulmonary	0	0	0	2	1	1	0	2	3	2	2	13
Leprosy	0	0	2	2	0	0	0	2	0	0	0	6
Leptospirosis	0	0	1	1	1	0	1	0	0	1	0	5
Measles	0	3	0	2	2	2	1	0	0	3	1	14
Mumps	0	0	0	0	18	0	0	2	3	4	3	30
Plague	0	0	0	0	0	0	0	0	2	1	2	5
Psittacosis	0	1	0	1	3	1	1	0	0	0	0	7
Q fever	0	1	3	2	0	2	1	3	1	2	3	18
Relapsing Fever	0	3	4	1	2	0	4	3	0	0	4	21
Rocky Mtn Spotted fev	0	0	2	2	2	2	3	0	1	0	1	13
Rubella	0	1	0	1	0	0	0	0	0	0	0	2
Taeniasis	0	1	0	5	1	1	5	50	1	6	3	73
Tick Paralysis	0	1	0	0	0	0	0	0	0	0	0	1
Tularemia	0	0	2	2	3	3	3	1	0	0	0	14
Typhus (murine)	0	0	0	1	0	0	0	0	0	0	1	2
Total	0	15	18	58	37	18	32	75	17	33	36	339

For a breakdown of Chlamydia, Gonorrhea, HIV, or Early Syphilis in Oregon by county and quarter of report in 2012 please visit

Chlamydia, Gonorrhea, or Early Syphilis

<http://public.health.oregon.gov/DISEASES/CONDITIONS/COMMUNICABLEDISEASE/DISEASESURVEILLANCE/STDPAGES/index.aspx#countyquarter>

HIV

<http://public.health.oregon.gov/DiseasesConditions/CommunicableDisease/DiseaseSurveillanceData/HIVData/Pages/epiprofile.aspx>

Oregon Campylobacter Cases
January-October

	Age Group in Years												Total
	00-04	05-09	10-14	15-19	20-24	25-29	30-39	40-49	50-59	60-69	70-79	80+	
2003	68	17	18	33	31	43	90	93	84	34	15	15	541
2004	47	25	24	31	31	44	77	93	83	57	36	16	564
2005	55	27	25	41	33	38	87	81	94	56	29	13	579
2006	57	26	20	32	54	34	66	84	90	52	32	11	558
2007	67	37	17	31	47	34	79	94	101	61	38	20	626
2008	82	24	24	27	34	37	87	96	115	59	20	13	618
2009	77	34	14	26	41	50	87	87	95	64	40	23	638
2010	86	27	14	43	42	72	105	88	94	65	40	23	699
2011	94	35	34	40	37	67	119	110	121	106	45	34	842
2012	87	29	20	26	52	47	121	113	123	125	45	26	814
Total	720	281	210	330	402	466	918	939	1000	679	340	194	6479

	Sex			Total
	F	M	U	
2003	246	296	0	542
2004	246	315	3	564
2005	270	308	1	579
2006	273	286	0	559
2007	277	345	4	626
2008	299	319	0	618
2009	315	325	0	640
2010	303	397	0	700
2011	400	444	0	844
2012	387	427	0	814
Total	3016	3462	8	6486

	Race					Total
	A	B	N	W	U	
2003	12	0	9	346	175	542
2004	3	1	2	343	215	564
2005	3	2	5	277	292	579
2006	4	3	2	277	273	559
2007	4	1	0	261	360	626
2008	2	4	5	287	320	618
2009	7	3	1	274	355	640
2010	4	8	7	365	316	700
2011	10	3	3	435	393	844
2012	6	1	6	448	353	814
Total	55	26	40	3313	3052	6486

Baker	5	0	0	3	1	3	3	2	5	3	25
Benton	21	19	15	19	21	16	19	34	14	29	207
Clackamas	48	58	56	59	75	58	50	59	92	77	632
Clatsop	9	7	3	5	10	6	3	6	7	8	64
Columbia	8	8	3	10	3	6	3	10	6	7	64
Coos	8	7	10	7	11	12	12	10	24	12	113
Crook	3	3	2	1	1	7	7	10	5	3	42
Curry	4	3	3	1	1	11	7	4	8	3	45
Deschutes	36	32	35	28	46	37	24	50	53	44	385
Douglas	20	12	13	8	11	14	8	16	19	16	137
Gilliam	1	1	0	0	1	0	0	0	1	1	5
Grant	0	3	0	0	0	3	2	1	3	3	15
Harney	1	2	3	4	3	3	4	1	5	1	27
Hood River	1	3	3	3	2	3	2	2	5	6	30
Jackson	20	21	25	19	45	28	33	19	41	34	285
Jefferson	2	4	4	4	7	4	10	2	3	7	47
Josephine	5	13	12	11	4	2	6	10	10	9	82
Klamath	17	9	19	17	8	7	11	6	16	13	123
Lake	1	5	3	1	1	1	4	3	3	0	22
Lane	40	51	55	52	52	64	61	75	76	76	602
Lincoln	4	6	6	6	1	1	5	5	9	8	51
Linn	23	18	19	25	20	23	33	20	36	35	252
Malheur	11	11	9	9	4	8	3	5	10	6	76
Marion	35	37	42	29	49	55	46	44	49	60	446
Morrow	4	3	1	1	0	1	4	1	5	2	22
Multnomah	97	114	122	98	117	130	154	168	176	174	1350
Polk	4	3	7	8	6	6	7	12	8	16	77
Sherman	0	0	0	0	0	0	0	1	0	0	1
Tillamook	9	5	5	2	7	5	3	0	4	5	45
Umatilla	17	11	11	21	7	5	7	10	6	10	105
Union	8	6	4	8	7	6	2	2	8	7	58
Wallowa	2	3	0	1	0	1	1	3	2	3	16
Warm Sprin	0	0	0	0	0	0	0	0	0	1	1
Wasco	7	1	2	4	4	4	5	5	4	5	41
Washington	60	71	70	87	90	81	87	87	109	110	852
Wheeler	0	0	0	0	0	0	0	0	0	0	0
Yamhill	11	14	17	8	11	7	14	17	22	20	141
Total	542	564	579	559	626	618	640	700	844	814	6486

Oregon Cryptosporidiosis Cases
January-October

	Age Group in Years												Total
	00-04	05-09	10-14	15-19	20-24	25-29	30-39	40-49	50-59	60-69	70-79	80+	
2003	9	1	2	3	1	5	5	8	3	0	0	0	37
2004	2	5	1	1	3	2	3	6	4	1	1	0	29
2005	11	15	4	3	2	8	6	9	4	1	1	0	64
2006	6	8	8	2	4	9	10	11	8	3	1	3	73
2007	12	12	30	17	13	12	21	12	12	5	5	3	154
2008	11	4	3	4	6	5	9	5	5	6	1	0	59
2009	10	5	6	8	16	16	32	33	28	17	13	12	196
2010	21	15	11	8	12	11	24	19	23	15	11	7	177
2011	12	6	5	10	22	17	22	20	17	19	17	5	172
2012	8	11	6	12	18	24	36	28	26	25	12	5	211
Total	102	82	76	68	97	109	168	151	130	92	62	35	1172

	Sex			Total
	F	M	U	
2003	13	24	0	37
2004	13	16	0	29
2005	38	24	2	64
2006	39	35	0	74
2007	91	64	1	156
2008	31	28	0	59
2009	125	71	1	197
2010	94	82	1	177
2011	105	67	0	172
2012	122	89	0	211
Total	671	500	5	1176

	Race					Total
	A	B	N	W	U	
2003	1	0	0	12	24	37
2004	0	0	0	18	11	29
2005	1	1	1	31	30	64
2006	0	1	0	47	26	74
2007	0	0	1	66	89	156
2008	0	2	0	49	8	59
2009	2	1	0	166	28	197
2010	2	3	2	142	28	177
2011	2	1	1	150	18	172
2012	4	0	2	187	18	211
Total	12	9	7	868	280	1176

Baker	0	0	0	0	1	0	0	0	0	1	2
Benton	0	0	0	2	0	2	0	1	23	4	32
Clackamas	6	5	5	7	24	12	36	29	17	26	167
Clatsop	0	0	1	0	1	0	3	1	5	1	12
Columbia	1	0	0	1	2	0	7	8	2	5	26
Coos	1	1	0	0	0	1	1	1	0	1	6
Crook	0	0	0	9	0	0	0	0	1	0	10
Curry	0	0	0	0	0	0	2	1	0	0	3
Deschutes	0	1	0	0	7	1	4	0	0	0	13
Douglas	1	0	0	1	1	1	7	5	1	12	29
Gilliam	0	0	0	0	0	0	0	0	0	0	0
Grant	0	0	0	0	0	0	0	0	1	0	1
Harney	0	0	0	0	0	2	14	1	0	0	17
Hood River	0	0	0	1	2	1	2	0	0	3	9
Jackson	1	2	30	9	26	6	29	10	1	11	125
Jefferson	0	0	0	0	0	0	0	1	0	0	1
Josephine	0	0	1	0	1	1	4	1	0	2	10
Klamath	0	1	0	4	2	0	0	1	1	1	10
Lake	0	0	0	1	0	0	0	0	0	0	1
Lane	1	3	4	4	11	2	17	12	12	13	79
Lincoln	1	1	0	0	0	0	1	3	2	3	11
Linn	0	0	0	0	1	0	1	12	15	5	34
Malheur	0	1	1	0	3	0	0	0	1	4	10
Marion	0	1	2	1	5	0	11	12	13	4	49
Morrow	0	0	1	0	2	0	0	0	1	0	4
Multnomah	15	6	13	26	38	16	30	46	44	66	300
Polk	0	0	0	0	1	0	0	0	0	0	1
Sherman	0	0	0	0	0	0	0	0	0	0	0
Tillamook	2	0	1	1	6	4	3	1	5	8	31
Umatilla	0	0	0	0	0	0	0	0	0	2	2
Union	0	0	0	0	0	0	1	1	1	0	3
Wallowa	0	0	0	0	0	0	0	0	0	0	0
Wasco	0	0	0	0	0	0	0	1	1	0	2
Washington	8	7	5	7	21	10	22	28	23	38	169
Wheeler	0	0	0	0	0	0	0	0	0	0	0
Yamhill	0	0	0	0	1	0	2	1	2	1	7
Total	37	29	64	74	156	59	197	177	172	211	1176

Oregon E. coli(STEC) Cases
January-October

	Age Group in Years												Total
	00-04	05-09	10-14	15-19	20-24	25-29	30-39	40-49	50-59	60-69	70-79	80+	
2003	26	9	4	6	9	5	9	7	6	7	7	2	97
2004	17	17	4	3	3	1	2	8	6	2	3	0	66
2005	21	11	21	4	6	12	18	16	17	14	6	1	147
2006	19	13	9	7	3	8	9	9	5	7	6	4	99
2007	13	10	5	12	4	3	4	5	8	5	3	3	75
2008	16	6	3	7	5	4	6	3	4	1	6	0	61
2009	14	8	7	6	6	7	3	6	5	5	2	2	71
2010	20	11	8	9	2	9	5	8	0	9	4	3	88
2011	28	14	13	15	7	7	1	4	4	8	6	6	113
2012	46	17	22	11	14	7	14	8	11	9	4	4	167
Total	220	116	96	80	59	63	71	74	66	67	47	25	984

	Sex			Total
	F	M	U	
2003	54	44	0	98
2004	40	26	0	66
2005	87	58	2	147
2006	57	43	0	100
2007	42	33	0	75
2008	27	34	0	61
2009	36	35	0	71
2010	43	45	0	88
2011	65	48	0	113
2012	82	85	0	167
Total	533	451	2	986

	Race					Total
	A	B	N	W	U	
2003	1	0	1	79	17	98
2004	1	0	0	57	8	66
2005	3	0	0	135	9	147
2006	3	0	0	91	6	100
2007	1	1	0	62	11	75
2008	3	0	0	55	3	61
2009	1	0	1	66	3	71
2010	2	1	0	81	4	88
2011	0	1	0	106	6	113
2012	0	3	4	141	19	167
Total	15	6	6	873	86	986

Baker	1	0	0	0	0	0	0	0	2	0	3
Benton	6	5	4	6	3	2	3	2	7	4	42
Clackamas	13	5	7	10	12	5	16	9	6	21	104
Clatsop	0	1	0	0	1	0	0	0	4	1	7
Columbia	0	1	2	0	0	1	0	0	0	2	6
Coos	3	1	0	0	1	0	1	0	3	1	10
Crook	0	1	2	1	0	1	0	2	0	4	11
Curry	0	0	0	0	0	0	0	0	0	0	0
Deschutes	3	0	64	4	3	4	2	3	4	8	95
Douglas	1	4	2	4	9	3	6	2	9	12	52
Gilliam	0	0	0	0	0	0	0	0	0	0	0
Grant	0	0	0	1	0	0	1	0	1	0	3
Harney	0	0	2	1	1	0	0	0	0	2	6
Hood River	2	0	0	0	0	0	0	0	1	0	3
Jackson	3	9	1	4	3	1	3	8	8	6	46
Jefferson	1	0	2	1	0	0	0	0	0	3	7
Josephine	0	0	1	0	0	0	0	0	1	2	4
Klamath	1	0	3	4	0	0	1	2	1	7	19
Lake	0	0	0	0	1	1	0	1	0	3	6
Lane	7	4	17	10	7	2	10	6	3	9	75
Lincoln	3	0	0	0	2	2	0	0	0	0	7
Linn	4	2	4	7	3	2	1	6	5	11	45
Malheur	6	4	1	2	1	2	1	2	4	1	24
Marion	10	10	12	12	4	6	9	8	9	20	100
Morrow	0	0	0	1	2	0	0	0	0	0	3
Multnomah	13	5	10	15	13	16	3	13	15	23	126
Polk	2	1	4	2	2	2	3	2	0	2	20
Sherman	0	0	0	0	0	0	0	0	0	0	0
Tillamook	1	1	0	0	1	1	0	1	0	1	6
Umatilla	2	2	1	3	0	6	1	0	2	2	19
Union	0	0	0	0	0	0	0	0	0	0	0
Wallowa	0	1	0	0	0	0	0	0	0	1	2
Wasco	1	1	0	0	0	0	1	2	1	1	7
Washington	11	6	7	8	3	1	6	16	17	14	89
Wheeler	0	0	0	0	0	0	0	0	1	0	1
Yamhill	4	2	1	4	3	3	3	3	9	6	38
Total	98	66	147	100	75	61	71	88	113	167	986

Oregon Giardiasis Cases
January-October

	Age Group in Years												Total
	00-04	05-09	10-14	15-19	20-24	25-29	30-39	40-49	50-59	60-69	70-79	80+	
2003	75	40	12	12	24	19	52	62	36	15	10	1	358
2004	65	29	23	10	26	32	71	48	49	23	12	2	390
2005	65	48	16	14	15	22	57	49	52	14	7	5	364
2006	58	32	12	15	23	25	51	55	41	22	8	1	343
2007	64	39	20	19	27	17	53	62	53	24	11	7	396
2008	65	34	22	26	18	27	54	45	53	38	7	7	396
2009	69	39	29	21	23	29	37	41	30	31	8	1	358
2010	85	33	17	22	20	25	48	54	50	32	7	5	398
2011	58	31	23	17	22	29	42	59	43	25	8	4	361
2012	37	20	23	25	27	19	48	45	42	30	13	3	332
Total	641	345	197	181	225	244	513	520	449	254	91	36	3696

	Sex			Total
	F	M	U	
2003	176	182	3	361
2004	165	224	2	391
2005	166	194	5	365
2006	157	181	10	348
2007	184	211	3	398
2008	176	218	3	397
2009	160	195	4	359
2010	167	231	3	401
2011	159	201	1	361
2012	144	187	1	332
Total	1654	2024	35	3713

	Race					Total
	A	B	N	W	U	
2003	11	5	2	180	163	361
2004	7	12	6	211	155	391
2005	11	9	3	175	167	365
2006	4	9	2	159	174	348
2007	16	15	3	155	209	398
2008	22	24	0	160	191	397
2009	9	19	4	129	198	359
2010	8	39	3	130	221	401
2011	6	36	4	125	190	361
2012	6	14	5	139	168	332
Total	100	182	32	1563	1836	3713

Baker	2	1	2	3	0	0	0	0	0	0	0	8
Benton	10	7	6	9	8	18	7	12	10	7	94	
Clackamas	29	29	37	29	24	32	22	24	27	16	269	
Clatsop	5	11	6	3	5	2	0	2	3	2	39	
Columbia	4	2	5	1	2	4	4	2	3	2	29	
Coos	6	5	4	7	9	10	18	9	4	4	76	
Crook	0	2	0	0	0	2	2	2	0	0	8	
Curry	3	0	0	3	2	3	2	3	3	1	20	
Deschutes	19	26	10	32	30	33	19	32	21	23	245	
Douglas	14	12	16	9	7	17	8	6	6	11	106	
Gilliam	0	0	0	0	0	0	0	0	1	0	1	
Grant	2	0	0	0	0	2	0	1	0	0	5	
Harney	0	0	0	1	0	1	0	0	1	1	4	
Hood River	3	3	2	3	4	2	2	0	1	1	21	
Jackson	17	23	13	25	18	16	19	8	9	9	157	
Jefferson	2	6	1	1	1	1	3	2	2	1	20	
Josephine	7	6	12	6	3	5	7	6	6	6	64	
Klamath	8	5	3	7	5	5	6	3	8	8	58	
Lake	1	0	0	2	0	0	1	1	0	1	6	
Lane	42	56	31	32	53	38	36	34	39	35	396	
Lincoln	3	4	6	4	5	1	4	7	1	3	38	
Linn	12	10	5	7	8	8	6	8	4	19	87	
Malheur	4	3	0	1	1	1	1	2	1	2	16	
Marion	32	20	26	27	24	21	21	18	22	20	231	
Morrow	0	1	0	0	1	0	1	2	1	0	6	
Multnomah	70	85	94	72	122	114	111	145	127	102	1042	
Polk	10	3	6	2	9	8	10	5	5	6	64	
Sherman	0	0	0	0	0	0	0	0	0	0	0	
Tillamook	3	1	6	3	5	4	1	1	1	0	25	
Umatilla	13	2	6	1	2	3	4	8	2	11	52	
Union	2	0	0	0	2	1	3	2	2	4	16	
Wallowa	0	1	0	1	1	0	1	0	1	0	5	
Warm Sprin	0	0	0	0	0	0	1	0	0	0	1	
Wasco	1	2	1	3	0	0	2	1	5	2	17	
Washington	31	55	63	49	39	39	27	49	39	29	420	
Wheeler	0	3	0	0	0	0	0	0	0	0	3	
Yamhill	6	7	4	5	8	6	10	6	6	6	64	
Total	361	391	365	348	398	397	359	401	361	332	3713	

Oregon Haemophilus influenzae Cases
January-October

	Age Group in Years												Total
	00-04	05-09	10-14	15-19	20-24	25-29	30-39	40-49	50-59	60-69	70-79	80+	
2003	2	0	0	0	0	0	2	3	4	9	7	6	33
2004	3	2	1	0	0	0	1	3	7	6	7	10	40
2005	5	1	0	2	1	0	1	2	6	6	8	7	39
2006	3	3	0	1	2	0	2	3	3	3	3	15	38
2007	10	0	0	0	2	0	3	2	4	10	6	17	54
2008	4	1	1	0	0	1	4	5	6	12	5	8	47
2009	5	0	0	0	1	1	0	2	6	7	6	9	37
2010	6	3	1	1	2	0	1	5	10	7	8	10	54
2011	2	1	0	1	0	2	4	1	9	16	13	15	64
2012	6	3	1	0	0	0	1	2	17	11	10	7	58
Total	46	14	4	5	8	4	19	28	72	87	73	104	464

	Sex			Total
	F	M	U	
2003	16	17	0	33
2004	20	20	0	40
2005	26	13	0	39
2006	23	14	1	38
2007	25	28	1	54
2008	24	23	0	47
2009	12	25	0	37
2010	29	25	0	54
2011	37	27	0	64
2012	29	29	0	58
Total	241	221	2	464

	Race					Total
	A	B	N	W	U	
2003	1	0	0	25	7	33
2004	0	0	1	28	11	40
2005	1	1	0	29	8	39
2006	1	0	0	27	10	38
2007	0	0	0	43	11	54
2008	1	1	1	35	9	47
2009	0	1	0	23	13	37
2010	0	0	2	40	12	54
2011	1	0	0	47	16	64
2012	0	1	1	41	15	58
Total	5	4	5	338	112	464

Baker	0	0	0	0	0	0	0	0	0	0	0	0	0
Benton	2	0	0	1	2	0	1	0	1	0	1	0	7
Clackamas	3	1	3	4	9	3	1	3	8	2	37		
Clatsop	1	0	0	0	0	0	0	1	2	0	4		
Columbia	1	0	0	0	1	0	1	1	1	0	5		
Coos	2	2	2	2	2	2	1	4	2	0	19		
Crook	0	0	1	0	0	1	0	0	0	0	2		
Curry	0	0	0	0	0	0	0	0	0	0	1	1	
Deschutes	2	1	1	3	3	3	1	1	1	3	19		
Douglas	0	2	0	0	1	1	1	2	3	1	11		
Gilliam	0	0	0	0	0	0	0	0	0	0	0	0	
Grant	0	0	0	0	0	0	0	0	0	0	0	0	
Harney	0	0	0	0	0	0	0	0	0	0	0	0	
Hood River	0	0	0	0	0	0	0	0	0	0	0	0	
Jackson	1	2	4	3	5	3	1	2	2	5	28		
Jefferson	0	0	1	2	0	0	2	2	0	1	8		
Josephine	2	1	1	3	2	5	4	2	7	2	29		
Klamath	1	2	0	0	2	0	0	0	2	1	8		
Lake	0	0	0	0	0	0	0	0	0	0	0	0	
Lane	2	6	2	9	9	4	6	7	4	6	55		
Lincoln	0	1	0	0	0	0	1	0	1	1	4		
Linn	2	1	2	2	1	6	0	1	3	1	19		
Malheur	0	0	0	0	0	0	0	0	0	0	0	0	
Marion	3	2	8	2	1	6	3	3	4	10	42		
Morrow	0	0	0	0	0	0	0	1	0	0	1		
Multnomah	6	9	9	4	6	7	9	8	14	12	84		
Polk	0	0	0	0	0	0	0	3	1	1	5		
Sherman	0	0	0	0	0	0	0	0	0	0	0	0	
Tillamook	0	0	0	0	0	0	0	1	0	0	1		
Umatilla	1	0	0	0	1	0	1	1	0	3	7		
Union	1	0	0	0	1	0	0	0	1	2	5		
Wallowa	0	0	0	0	0	0	0	0	0	0	0	0	
Wasco	0	0	0	0	0	0	1	1	0	0	2		
Washington	3	7	4	1	4	6	2	7	5	5	44		
Wheeler	0	0	0	0	0	0	0	0	0	0	0	0	
Yamhill	0	3	1	2	4	0	1	3	2	1	17		
Total	33	40	39	38	54	47	37	54	64	58	464		

Oregon Hepatitis A (acute) Cases
January-October

	Age Group in Years												Total
	00-04	05-09	10-14	15-19	20-24	25-29	30-39	40-49	50-59	60-69	70-79	80+	
2003	0	1	3	4	2	8	9	4	11	3	3	3	51
2004	4	8	4	2	1	4	7	6	10	5	2	7	60
2005	1	4	1	3	4	3	5	3	4	2	3	5	38
2006	2	2	2	2	4	0	4	8	4	5	5	0	38
2007	1	1	0	1	3	4	5	4	2	1	2	1	25
2008	3	1	1	1	4	2	4	6	2	1	0	1	26
2009	0	1	1	0	0	2	2	1	6	1	0	0	14
2010	0	0	0	0	2	1	2	2	2	2	2	3	16
2011	0	0	0	0	0	1	1	2	0	0	4	1	9
2012	0	0	0	0	0	0	0	1	0	1	0	0	2
Total	11	18	12	13	20	25	39	37	41	21	21	21	279

	Sex			Total
	F	M	U	
2003	21	30	0	51
2004	29	31	0	60
2005	22	16	0	38
2006	22	16	0	38
2007	9	16	0	25
2008	13	13	0	26
2009	4	10	0	14
2010	5	11	0	16
2011	6	3	0	9
2012	1	1	0	2
Total	132	147	0	279

	Race					Total
	A	B	N	W	U	
2003	1	0	0	40	10	51
2004	2	0	1	47	10	60
2005	0	0	0	35	3	38
2006	1	0	0	33	4	38
2007	1	0	0	22	2	25
2008	1	1	0	20	4	26
2009	0	0	0	13	1	14
2010	1	1	0	13	1	16
2011	1	0	0	8	0	9
2012	0	0	0	2	0	2
Total	8	2	1	233	35	279

Baker	0	0	0	0	0	0	0	0	0	0	0	0	0
Benton	0	1	1	1	0	0	1	0	0	0	0	0	4
Clackamas	5	2	3	2	1	1	0	3	1	0	0	18	
Clatsop	0	0	0	2	0	0	0	0	0	0	0	2	
Columbia	1	0	0	0	0	1	0	0	0	0	0	2	
Coos	1	5	0	0	0	0	0	0	0	0	0	6	
Crook	0	1	0	0	0	0	0	0	0	0	0	1	
Curry	0	0	0	0	0	0	0	0	0	0	0	0	
Deschutes	2	1	0	2	3	1	0	2	1	0	0	12	
Douglas	3	3	3	0	0	1	0	1	0	0	0	11	
Gilliam	0	0	0	0	0	0	0	0	0	0	0	0	
Grant	1	0	0	0	0	0	0	0	0	0	0	1	
Harney	0	0	0	0	0	0	0	0	0	0	0	0	
Hood River	2	1	0	1	0	2	0	0	2	0	0	8	
Jackson	5	2	0	0	2	0	1	1	0	0	0	11	
Jefferson	1	1	0	0	0	0	0	0	0	0	0	2	
Josephine	0	0	2	0	1	1	0	0	0	0	0	4	
Klamath	2	0	0	0	2	0	1	0	1	1	1	7	
Lake	1	0	0	0	0	0	0	0	0	0	0	1	
Lane	3	6	5	5	1	2	3	2	1	0	0	28	
Lincoln	0	1	1	0	1	0	0	0	0	0	0	3	
Linn	1	3	1	0	0	0	0	0	0	0	0	5	
Malheur	0	2	0	0	1	0	0	0	1	0	0	4	
Marion	4	10	4	4	1	1	1	1	0	0	0	26	
Morrow	0	0	0	0	0	0	0	0	0	0	0	0	
Multnomah	3	12	10	7	10	8	3	2	1	0	0	56	
Polk	0	1	1	0	1	0	0	1	0	0	0	4	
Sherman	0	0	0	0	0	0	0	0	0	0	0	0	
Tillamook	3	0	0	6	0	0	0	0	0	0	0	9	
Umatilla	1	1	1	1	0	0	0	0	0	0	0	4	
Union	0	2	0	0	0	0	0	0	0	0	0	2	
Wallowa	0	0	0	0	0	0	0	0	0	0	0	0	
Wasco	2	0	0	0	0	0	0	0	0	0	0	2	
Washington	7	3	4	7	1	7	4	3	1	1	1	38	
Wheeler	0	0	0	0	0	0	0	0	0	0	0	0	
Yamhill	3	2	2	0	0	1	0	0	0	0	0	8	
Total	51	60	38	38	25	26	14	16	9	2	2	279	

Oregon Hepatitis B (acute) Cases
January-October

	Age Group in Years												Total
	00-04	05-09	10-14	15-19	20-24	25-29	30-39	40-49	50-59	60-69	70-79	80+	
2003	0	0	0	4	11	10	26	27	8	7	1	1	95
2004	0	0	0	0	9	12	30	36	11	5	1	0	104
2005	0	0	0	1	5	10	24	25	21	4	2	0	92
2006	0	0	0	0	5	6	16	24	12	5	0	0	68
2007	0	0	0	0	2	4	18	17	7	3	1	0	52
2008	1	0	0	0	1	3	9	15	9	5	0	0	43
2009	0	0	0	1	1	3	12	8	8	4	1	0	38
2010	0	0	0	0	1	1	9	11	11	3	0	0	36
2011	0	0	0	0	1	1	3	8	10	5	0	1	29
2012	0	0	0	0	0	1	3	8	5	2	3	0	22
Total	1	0	0	6	36	51	150	179	102	43	9	2	579

	Sex			Total
	F	M	U	
2003	37	59	0	96
2004	39	65	0	104
2005	37	55	0	92
2006	25	43	0	68
2007	19	33	0	52
2008	6	37	0	43
2009	10	28	0	38
2010	13	23	0	36
2011	5	24	0	29
2012	9	13	0	22
Total	200	380	0	580

	Race					Total
	A	B	N	W	U	
2003	2	2	1	70	21	96
2004	7	1	2	73	21	104
2005	6	2	2	70	12	92
2006	1	6	0	57	4	68
2007	2	1	0	43	6	52
2008	1	1	1	33	7	43
2009	0	0	0	36	2	38
2010	0	0	0	34	2	36
2011	1	1	0	26	1	29
2012	1	0	0	17	4	22
Total	21	14	6	459	80	580

Baker	0	0	0	0	0	0	0	0	0	0	0	0	0
Benton	1	3	1	0	2	0	0	0	0	0	0	0	7
Clackamas	6	11	9	4	5	7	4	5	3	1		55	
Clatsop	2	2	0	2	0	1	0	0	1	0		8	
Columbia	0	2	1	2	2	0	0	0	0	1		8	
Coos	3	2	1	0	0	0	0	1	0	0		7	
Crook	0	0	0	1	0	0	0	1	0	0		2	
Curry	0	0	1	1	0	0	0	0	0	0		2	
Deschutes	4	1	5	4	0	0	4	2	2	0		22	
Douglas	3	5	1	2	5	1	2	1	0	0		20	
Gilliam	0	0	0	0	0	0	0	0	0	0		0	
Grant	1	0	0	0	0	0	0	0	0	0		1	
Harney	0	0	0	0	0	0	0	0	0	0		0	
Hood River	0	0	1	0	0	0	0	0	0	0		1	
Jackson	8	1	7	5	2	6	3	1	1	0		34	
Jefferson	0	0	0	0	0	0	0	0	0	0		0	
Josephine	2	1	5	5	1	1	0	0	0	0		15	
Klamath	2	2	0	1	0	1	0	0	0	0		6	
Lake	0	0	0	0	0	0	0	0	0	0		0	
Lane	14	16	10	12	8	6	3	3	3	4		79	
Lincoln	0	2	1	1	0	1	0	0	0	1		6	
Linn	1	13	6	2	3	4	0	2	2	1		34	
Malheur	1	1	1	0	0	0	1	0	0	1		5	
Marion	13	9	8	4	3	3	3	4	1	2		50	
Morrow	0	0	0	0	0	0	0	0	0	0		0	
Multnomah	30	20	17	14	14	5	12	7	9	3		131	
Polk	0	3	2	1	0	0	0	2	1	0		9	
Sherman	0	0	0	0	0	0	0	0	0	0		0	
Tillamook	0	0	0	0	0	0	0	1	0	0		1	
Umatilla	1	1	1	0	0	0	0	0	0	1		4	
Union	0	0	0	1	0	0	0	0	0	1		2	
Wallowa	0	0	0	0	0	0	0	0	0	0		0	
Wasco	0	0	0	0	0	0	0	2	2	0		4	
Washington	3	8	8	6	5	6	6	3	4	5		54	
Wheeler	0	0	0	0	0	0	0	0	0	0		0	
Yamhill	1	1	6	0	2	1	0	1	0	1		13	
Total	96	104	92	68	52	43	38	36	29	22		580	

Oregon Hepatitis B (chronic) Cases
January-October

	Age Group in Years												Total
	00-04	05-09	10-14	15-19	20-24	25-29	30-39	40-49	50-59	60-69	70-79	80+	
2003	4	5	5	10	28	44	76	96	45	19	2	2	336
2004	4	1	1	21	31	38	143	88	58	28	5	1	419
2005	3	2	4	13	34	43	99	75	55	12	8	8	356
2006	4	3	6	11	33	50	110	79	49	19	3	6	373
2007	7	4	3	16	36	42	108	91	62	35	10	1	415
2008	8	7	5	19	30	42	104	100	69	35	10	10	439
2009	4	2	1	7	26	36	96	78	66	37	9	6	368
2010	5	0	1	10	17	37	80	78	65	30	9	4	336
2011	2	3	4	5	30	32	76	90	82	29	9	2	364
2012	2	3	5	8	17	35	75	67	59	45	7	6	329
Total	43	30	35	120	282	399	967	842	610	289	72	46	3735

	Sex			Total
	F	M	U	
2003	152	177	10	339
2004	180	230	9	419
2005	160	191	7	358
2006	178	193	3	374
2007	198	213	4	415
2008	181	253	6	440
2009	154	209	6	369
2010	155	181	0	336
2011	146	217	1	364
2012	144	185	0	329
Total	1648	2049	46	3743

	Race					Total
	A	B	N	W	U	
2003	148	9	3	99	80	339
2004	167	24	5	143	80	419
2005	144	17	6	106	85	358
2006	167	25	6	109	67	374
2007	182	21	7	105	100	415
2008	198	21	9	124	88	440
2009	161	29	8	93	78	369
2010	142	19	11	74	90	336
2011	156	17	21	99	71	364
2012	143	18	15	81	72	329
Total	1608	200	91	1033	811	3743

Baker	0	0	1	0	0	1	1	0	0	0	3
Benton	5	7	8	4	7	12	3	5	4	7	62
Clackamas	18	36	26	20	30	37	36	24	34	24	285
Clatsop	2	2	3	3	5	1	1	1	0	3	21
Columbia	0	1	4	3	1	0	2	3	1	0	15
Coos	3	3	3	2	4	2	3	2	3	2	27
Crook	1	2	1	0	3	0	2	0	0	0	9
Curry	0	0	1	1	0	2	2	0	2	2	10
Deschutes	5	5	6	1	6	7	5	5	9	5	54
Douglas	6	9	7	4	1	9	7	7	5	2	57
Gilliam	0	0	0	0	0	0	0	0	1	1	2
Grant	0	0	0	1	1	0	0	0	0	0	2
Harney	0	0	0	0	1	0	0	1	0	0	2
Hood River	1	0	1	0	1	0	1	0	0	1	5
Jackson	14	15	9	8	9	12	6	7	11	6	97
Jefferson	0	1	1	1	0	2	0	1	0	2	8
Josephine	4	7	3	7	6	4	3	3	2	4	43
Klamath	2	2	2	3	4	6	1	6	5	1	32
Lake	0	0	0	0	0	0	0	0	1	0	1
Lane	15	26	25	30	27	19	17	12	16	16	203
Lincoln	4	4	3	0	2	1	5	3	4	2	28
Linn	3	8	6	5	4	6	6	6	2	4	50
Malheur	1	2	3	6	3	5	3	1	1	3	28
Marion	37	36	26	31	30	23	18	24	22	20	267
Morrow	0	1	0	0	2	0	2	0	1	2	8
Multnomah	144	141	116	152	168	182	168	136	180	136	1523
Polk	5	2	4	13	3	9	2	5	0	3	46
Sherman	0	0	0	0	0	0	0	0	0	0	0
State Of O	0	0	0	0	0	0	0	0	0	1	1
Tillamook	0	2	1	0	2	4	0	1	1	2	13
Umatilla	4	9	1	6	3	6	5	3	4	3	44
Union	4	1	1	0	2	3	1	0	1	4	17
Wallowa	0	0	0	0	0	0	0	1	0	0	1
Wasco	0	0	3	0	3	2	1	2	0	1	12
Washington	59	93	87	69	84	79	67	75	48	69	730
Wheeler	0	0	0	0	0	0	0	0	0	0	0
Yamhill	2	4	6	4	3	6	1	2	6	3	37
Total	339	419	358	374	415	440	369	336	364	329	3743

Oregon Hepatitis C (acute) Cases
January-October

	Age Group in Years												Total
	00-04	05-09	10-14	15-19	20-24	25-29	30-39	40-49	50-59	60-69	70-79	80+	
2003	0	0	0	0	2	2	3	4	1	0	1	0	13
2004	0	0	0	0	2	4	3	3	0	1	0	0	13
2005	0	0	0	2	2	6	1	4	3	0	0	0	18
2006	0	0	0	3	4	8	5	5	2	1	0	0	28
2007	0	0	0	0	2	4	2	7	3	0	0	0	18
2008	1	0	0	1	3	3	11	6	2	1	0	0	28
2009	0	0	0	2	1	3	10	2	1	0	0	0	19
2010	0	0	0	0	4	2	3	7	2	0	0	0	18
2011	0	0	0	3	4	4	2	5	2	0	0	0	20
2012	1	0	0	3	4	10	7	5	5	0	0	0	35
Total	2	0	0	14	28	46	47	48	21	3	1	0	210

	Sex			Total
	F	M	U	
2003	7	6	0	13
2004	9	4	1	14
2005	9	9	0	18
2006	20	8	0	28
2007	11	7	0	18
2008	12	16	0	28
2009	5	14	0	19
2010	11	7	0	18
2011	10	10	0	20
2012	12	23	0	35
Total	106	104	1	211

	Race					Total
	A	B	N	W	U	
2003	0	0	0	9	4	13
2004	1	0	1	9	3	14
2005	0	0	0	12	6	18
2006	0	0	0	19	9	28
2007	0	0	1	11	6	18
2008	0	0	0	20	8	28
2009	0	0	4	10	5	19
2010	0	1	0	15	2	18
2011	0	0	0	17	3	20
2012	0	0	1	29	5	35
Total	1	1	7	151	51	211

Baker	0	0	1	0	0	0	0	0	0	0	0	1
Benton	0	1	0	0	0	0	0	0	0	1	2	4
Clackamas	1	1	1	3	2	4	3	2	0	3	20	
Clatsop	0	1	0	1	0	2	1	0	0	0	5	
Columbia	0	1	0	0	0	1	0	0	0	0	2	
Coos	0	0	0	0	0	0	0	0	0	0	0	
Crook	0	0	0	0	0	0	0	0	0	0	0	
Curry	0	0	0	1	0	0	0	0	0	0	1	
Deschutes	0	2	0	3	0	0	0	0	1	2	8	
Douglas	3	1	2	2	1	0	0	5	2	3	19	
Gilliam	0	0	0	0	0	0	0	0	0	0	0	
Grant	0	0	0	0	0	0	0	0	0	0	0	
Harney	0	0	0	0	0	0	0	1	0	1	2	
Hood River	0	0	0	0	1	0	0	2	0	0	3	
Jackson	1	1	5	0	0	1	2	0	0	0	10	
Jefferson	0	0	0	0	1	0	1	0	0	0	2	
Josephine	0	0	1	0	0	1	1	0	0	1	4	
Klamath	0	0	0	0	1	0	4	0	2	1	8	
Lake	0	0	0	0	0	0	0	0	0	0	0	
Lane	1	0	0	1	4	7	4	4	4	5	30	
Lincoln	1	0	0	0	0	1	0	0	0	0	2	
Linn	1	0	0	0	0	1	0	0	1	0	3	
Malheur	2	0	0	2	0	0	0	0	0	0	4	
Marion	0	0	0	0	0	0	1	3	2	6	12	
Morrow	1	0	0	1	0	0	0	0	0	0	2	
Multnomah	2	4	5	10	6	3	1	1	4	10	46	
Polk	0	1	2	2	0	1	0	0	1	0	7	
Sherman	0	0	0	0	0	0	0	0	0	0	0	
Tillamook	0	0	0	0	0	0	0	0	0	0	0	
Umatilla	0	0	1	2	1	1	1	0	1	0	7	
Union	0	0	0	0	0	0	0	0	0	0	0	
Wallowa	0	0	0	0	0	0	0	0	0	0	0	
Wasco	0	0	0	0	1	1	0	0	0	0	2	
Washington	0	0	0	0	0	1	0	0	1	1	3	
Wheeler	0	0	0	0	0	0	0	0	0	0	0	
Yamhill	0	1	0	0	0	3	0	0	0	0	4	
Total	13	14	18	28	18	28	19	18	20	35	211	

Oregon Hepatitis C (chronic) Cases
January-October

	Age Group in Years												Total
	00-04	05-09	10-14	15-19	20-24	25-29	30-39	40-49	50-59	60-69	70-79	80+	
2003	0	2	2	0	4	6	34	62	100	32	2	0	244
2004	2	0	0	0	6	12	42	94	86	22	0	0	264
2005	2	0	4	20	70	104	417	980	1024	180	44	20	2865
2006	46	2	6	54	184	404	1330	3352	3270	506	168	62	9384
2007	50	4	18	82	230	426	1742	3656	4110	712	178	54	11262
2008	34	16	12	60	250	492	1514	3478	4300	902	196	46	11300
2009	16	8	14	72	256	456	1310	2988	4040	1050	214	72	10496
2010	2	2	8	30	104	175	531	1199	1760	560	64	16	4451
2011	1	0	2	39	124	185	505	1208	1760	675	69	22	4590
2012	2	3	3	34	183	192	491	888	1430	674	77	25	4002
Total	155	37	69	391	1411	2452	7916	17905	21880	5313	1012	317	58858

	Sex					Total
		F	M	N	U	
2003	0	98	142	0	4	244
2004	0	108	150	0	8	266
2005	0	1083	1756	0	46	2885
2006	0	3594	5654	0	290	9538
2007	2	4338	6820	0	174	11334
2008	0	4550	6568	0	234	11352
2009	0	4030	6344	0	184	10558
2010	0	1714	2736	0	11	4461
2011	0	1740	2854	0	0	4594
2012	0	1473	2528	2	4	4007
Total	2	22728	35552	2	955	59239

	Race					Total
	A	B	N	W	U	
2003	0	0	2	52	190	244
2004	0	2	4	86	174	266
2005	14	36	14	612	2209	2885
2006	42	76	90	1940	7390	9538
2007	46	122	86	2536	8544	11334
2008	34	128	70	3106	8014	11352
2009	38	108	82	2310	8020	10558
2010	18	97	60	1534	2752	4461
2011	41	98	61	2065	2329	4594
2012	42	77	60	1690	2138	4007
Total	275	744	529	15931	41760	59239

Race: A=Asian/Pacific Islander N=Native American B=Black W=White U=Other/Unknown

Baker	0	0	0	44	56	44	58	16	10	19	247
Benton	0	4	38	98	112	154	138	49	50	36	679
Clackamas	26	56	294	768	666	694	624	222	247	249	3846
Clatsop	0	8	76	192	118	122	112	49	50	45	772
Columbia	0	0	4	104	170	126	100	56	60	58	678
Coos	0	0	56	262	236	288	290	117	106	116	1471
Crook	0	0	36	8	12	18	22	20	15	23	154
Curry	0	0	12	50	92	102	96	43	37	31	463
Deschutes	0	0	70	358	278	364	308	125	176	166	1845
Douglas	8	70	140	434	388	454	336	163	200	130	2323
Gilliam	0	0	0	0	8	4	0	1	4	1	18
Grant	0	0	0	2	8	8	10	4	7	0	39
Harney	0	0	4	4	10	6	8	7	9	6	54
Hood River	0	6	4	12	16	24	18	9	6	13	108
Jackson	34	24	226	644	552	808	656	224	296	213	3677
Jefferson	4	2	0	36	12	84	92	37	43	47	357
Josephine	0	0	38	316	310	284	332	137	143	88	1648
Klamath	2	0	28	198	210	250	274	80	88	59	1189
Lake	2	0	4	46	34	26	30	12	11	8	173
Lane	0	2	162	570	670	1072	1128	492	461	381	4938
Lincoln	0	2	66	166	192	206	126	54	73	69	954
Linn	0	0	70	306	326	362	410	175	154	128	1931
Malheur	0	0	70	250	236	200	216	74	64	61	1171
Marion	0	12	371	1080	1222	986	966	440	427	355	5859
Morrow	0	0	2	22	14	12	0	1	10	6	67
Multnomah	154	72	630	1866	3344	2864	2560	1174	1212	1080	14956
Polk	0	0	16	110	114	138	142	60	57	47	684
Sherman	0	0	8	4	4	4	2	1	0	3	26
State Of O	0	0	0	0	0	0	0	0	0	3	3
Tillamook	4	2	8	76	56	88	60	26	40	23	383
Umatilla	4	4	36	238	338	284	344	134	78	94	1554
Union	0	0	6	28	24	44	58	16	36	12	224
Wallowa	0	0	2	2	2	12	4	5	6	0	33
Warm Sprin	0	0	0	0	0	0	0	0	0	1	1
Wasco	0	0	22	64	114	56	48	20	21	35	380
Washington	6	2	294	984	1106	1000	824	348	323	273	5160
Wheeler	0	0	0	2	0	6	6	0	0	2	16
Yamhill	0	0	92	194	284	158	160	70	74	126	1158
Total	244	266	2885	9538	11334	11352	10558	4461	4594	4007	59239

Oregon HUS Cases
January-October

	Age Group in Years												Total
	00-04	05-09	10-14	15-19	20-24	25-29	30-39	40-49	50-59	60-69	70-79	80+	
2003	4	1	0	0	0	0	1	0	0	0	0	0	6
2004	3	2	1	0	0	0	0	0	0	0	0	0	6
2005	5	0	0	0	0	0	0	0	0	0	0	0	5
2006	6	0	2	2	0	1	0	0	0	0	0	0	11
2007	6	2	0	1	0	0	0	0	0	0	0	0	9
2008	6	3	0	1	0	1	0	0	0	0	0	0	11
2009	1	1	1	0	0	0	0	0	1	0	1	0	5
2010	7	3	2	0	0	0	0	0	0	0	0	0	12
2011	4	0	2	0	0	0	0	0	0	0	1	1	8
2012	6	2	5	0	0	0	0	0	1	1	0	0	15
Total	48	14	13	4	0	2	1	0	2	1	2	1	88

	Sex			Total
	F	M	U	
2003	5	1	0	6
2004	4	2	0	6
2005	5	0	0	5
2006	9	2	0	11
2007	6	3	0	9
2008	4	8	0	12
2009	3	2	0	5
2010	5	7	0	12
2011	6	2	0	8
2012	9	6	0	15
Total	56	33	0	89

	Race					Total
	A	B	N	W	U	
2003	0	0	0	5	1	6
2004	0	1	0	4	1	6
2005	0	0	0	4	1	5
2006	0	0	0	9	2	11
2007	0	0	0	8	1	9
2008	0	1	0	11	0	12
2009	0	0	0	4	1	5
2010	0	0	0	11	1	12
2011	0	0	0	8	0	8
2012	0	0	0	13	2	15
Total	0	2	0	77	10	89

Baker	0	0	0	1	0	0	0	0	0	0	0	1
Benton	0	0	0	0	0	0	0	1	0	0	0	1
Clackamas	2	1	0	2	0	1	2	1	0	1	10	
Clatsop	0	0	0	0	0	0	0	0	0	0	0	
Columbia	0	0	0	0	0	0	0	0	0	0	0	
Coos	1	0	0	0	1	0	1	0	0	0	3	
Crook	0	2	0	0	0	0	0	0	0	1	3	
Curry	0	0	0	0	0	0	0	0	0	0	0	
Deschutes	0	0	0	0	0	2	0	0	0	0	2	
Douglas	0	0	0	0	2	0	0	2	1	1	6	
Gilliam	0	0	0	0	0	0	0	0	0	0	0	
Grant	0	0	0	0	0	0	0	0	0	0	0	
Harney	0	0	0	0	0	0	0	0	0	0	0	
Hood River	0	0	0	0	0	0	0	0	1	0	1	
Jackson	0	0	0	0	1	0	0	1	0	1	3	
Jefferson	0	0	0	1	0	0	0	0	0	0	1	
Josephine	0	0	0	0	0	0	0	0	0	1	1	
Klamath	0	0	1	0	0	0	0	0	0	1	2	
Lake	0	0	0	0	0	0	0	0	0	0	0	
Lane	0	0	0	2	1	1	0	0	0	1	5	
Lincoln	0	0	0	0	0	0	1	0	0	0	1	
Linn	0	0	1	1	0	0	0	2	1	0	5	
Malheur	0	0	0	0	0	1	0	0	0	0	1	
Marion	1	0	1	1	1	1	0	0	0	2	7	
Morrow	0	0	0	0	1	0	0	0	0	0	1	
Multnomah	1	1	0	1	0	3	1	2	0	4	13	
Polk	0	0	0	0	0	0	0	0	0	0	0	
Sherman	0	0	0	0	1	0	0	0	0	0	1	
Tillamook	0	0	0	0	0	0	0	0	0	0	0	
Umatilla	1	1	0	0	0	2	0	0	0	0	4	
Union	0	1	0	0	0	0	0	0	0	0	1	
Wallowa	0	0	0	0	0	0	0	0	0	0	0	
Wasco	0	0	0	0	0	0	0	1	0	0	1	
Washington	0	0	1	1	1	1	0	2	4	2	12	
Wheeler	0	0	0	0	0	0	0	0	0	0	0	
Yamhill	0	0	1	1	0	0	0	0	1	0	3	
Total	6	6	5	11	9	12	5	12	8	15	89	

Oregon Legionellosis Cases
January-October

	Age Group in Years												Total
	00-04	05-09	10-14	15-19	20-24	25-29	30-39	40-49	50-59	60-69	70-79	80+	
2003	0	0	0	0	0	1	2	1	3	3	2	4	16
2004	0	0	0	0	0	0	0	0	2	3	1	0	6
2005	0	0	0	0	0	0	1	1	3	2	2	1	10
2006	0	0	0	0	2	1	2	3	5	3	2	1	19
2007	0	0	0	0	0	0	2	0	2	3	3	0	10
2008	0	0	0	0	0	0	0	8	3	2	1	2	16
2009	0	0	0	0	0	0	1	0	7	7	0	1	16
2010	1	0	0	0	0	0	3	3	2	5	0	0	14
2011	0	0	0	0	0	0	0	2	6	9	0	4	21
2012	0	0	0	0	0	0	1	1	6	5	12	4	29
Total	1	0	0	0	2	2	12	19	39	42	23	17	157

	Sex			Total
	F	M	U	
2003	7	8	1	16
2004	1	5	0	6
2005	2	8	0	10
2006	8	11	0	19
2007	2	8	0	10
2008	4	12	0	16
2009	4	12	0	16
2010	7	7	0	14
2011	11	10	0	21
2012	8	21	0	29
Total	54	102	1	157

	Race					Total
	A	B	N	W	U	
2003	0	1	0	12	3	16
2004	0	0	0	5	1	6
2005	0	0	1	7	2	10
2006	0	1	0	16	2	19
2007	0	1	0	7	2	10
2008	0	1	0	12	3	16
2009	0	1	0	13	2	16
2010	0	0	0	13	1	14
2011	0	0	0	18	3	21
2012	0	0	0	25	4	29
Total	0	5	1	128	23	157

Baker	0	0	0	0	0	0	0	0	0	0	0	0	0
Benton	0	0	0	0	0	0	0	0	0	0	0	0	0
Clackamas	4	0	4	5	2	1	5	2	1	6	30		
Clatsop	0	0	0	0	0	1	0	0	0	0	0	1	
Columbia	0	1	0	0	0	0	0	0	0	0	1	2	
Coos	0	0	0	0	0	1	0	0	0	0	0	1	
Crook	0	0	0	1	0	0	0	0	0	0	0	1	
Curry	0	0	0	0	0	0	1	0	0	0	0	1	
Deschutes	0	0	0	1	0	0	0	1	0	1	3		
Douglas	0	0	0	1	1	0	0	0	0	1	3		
Gilliam	0	0	0	0	0	0	0	0	0	0	0	0	
Grant	0	0	0	0	0	0	0	0	0	0	0	0	
Harney	0	0	0	0	0	0	0	0	0	0	0	0	
Hood River	0	0	0	0	0	0	0	0	0	0	0	0	
Jackson	1	0	0	0	0	0	1	1	1	2	6		
Jefferson	0	0	0	0	0	0	0	0	0	0	0	0	
Josephine	0	0	0	0	0	0	0	0	0	0	1	1	
Klamath	0	0	0	0	0	0	0	0	0	0	0	0	
Lake	0	0	0	0	0	0	0	0	0	0	0	0	
Lane	0	0	0	4	0	2	1	4	6	4	21		
Lincoln	0	0	0	0	0	0	0	0	1	1	2		
Linn	0	0	0	0	0	0	1	0	1	0	2		
Malheur	0	1	0	0	0	0	0	1	0	0	2		
Marion	1	0	0	0	1	1	1	0	1	0	5		
Morrow	0	0	0	0	0	0	0	0	0	0	0	0	
Multnomah	5	3	4	6	5	5	4	2	5	6	45		
Polk	0	0	0	0	0	0	0	0	1	1	2		
Sherman	0	0	0	0	0	0	0	0	0	0	0	0	
Tillamook	0	0	0	0	0	0	0	0	0	0	0	0	
Umatilla	0	0	0	0	0	0	0	0	0	1	1		
Union	0	0	0	0	0	0	0	0	0	0	0	0	
Wallowa	0	0	0	0	0	1	0	0	0	1	2		
Wasco	0	0	0	0	0	1	0	1	0	1	3		
Washington	5	1	2	1	1	3	2	2	4	2	23		
Wheeler	0	0	0	0	0	0	0	0	0	0	0	0	
Yamhill	0	0	0	0	0	0	0	0	0	0	0	0	
Total	16	6	10	19	10	16	16	14	21	29	157		

Oregon Listeriosis Cases
January-October

	Age Group in Years												Total
	00-04	05-09	10-14	15-19	20-24	25-29	30-39	40-49	50-59	60-69	70-79	80+	
2003	0	0	0	0	0	0	0	0	0	1	1	2	4
2004	2	0	0	0	0	0	1	0	0	1	2	0	6
2005	3	0	0	0	1	0	0	2	0	1	1	3	11
2006	0	0	0	0	0	0	0	0	5	1	1	5	12
2007	0	0	0	0	0	0	0	1	1	0	2	3	7
2008	1	0	0	0	0	1	1	0	0	0	1	1	5
2009	3	0	0	2	0	0	0	0	0	2	7	3	17
2010	2	1	0	0	1	1	1	0	0	3	2	2	13
2011	0	0	0	0	0	0	0	0	1	1	5	1	8
2012	0	0	0	1	1	1	1	1	4	1	3	2	15
Total	11	1	0	3	3	3	4	4	11	11	25	22	98

	Sex			Total
	F	M	U	
2003	3	1	0	4
2004	3	3	0	6
2005	7	4	0	11
2006	6	6	0	12
2007	5	2	0	7
2008	4	1	0	5
2009	10	7	0	17
2010	10	3	0	13
2011	4	4	0	8
2012	9	6	0	15
Total	61	37	0	98

	Race					Total
	A	B	N	W	U	
2003	0	0	0	4	0	4
2004	0	0	0	6	0	6
2005	0	0	0	10	1	11
2006	0	0	0	11	1	12
2007	0	0	0	5	2	7
2008	0	0	0	4	1	5
2009	0	0	0	14	3	17
2010	0	0	0	13	0	13
2011	0	0	1	7	0	8
2012	0	1	1	13	0	15
Total	0	1	2	87	8	98

Baker	0	0	0	0	0	0	0	0	0	0	1	1
Benton	0	0	0	0	0	0	0	0	0	0	0	0
Clackamas	0	3	2	1	2	1	2	3	1	3	18	
Clatsop	0	0	2	0	0	0	1	0	0	0	3	
Columbia	0	0	0	0	0	0	0	0	0	1	1	
Coos	1	0	1	0	0	0	0	0	0	0	2	
Crook	0	0	0	0	0	0	0	0	0	0	0	
Curry	0	0	0	0	0	0	0	0	0	0	0	
Deschutes	0	0	0	0	0	0	0	0	0	1	1	
Douglas	0	0	0	0	1	0	0	0	0	1	2	
Gilliam	0	0	0	0	0	0	0	0	0	0	0	
Grant	0	0	0	0	0	0	0	0	0	0	0	
Harney	0	0	0	0	0	0	0	0	0	0	0	
Hood River	0	0	0	0	0	0	0	0	0	0	0	
Jackson	0	0	0	0	0	0	0	1	0	0	1	
Jefferson	0	1	0	0	0	0	0	0	0	0	1	
Josephine	0	0	1	1	0	0	0	0	0	0	2	
Klamath	0	0	0	0	0	0	0	0	0	0	0	
Lake	0	0	0	0	0	0	0	0	0	0	0	
Lane	1	0	1	3	0	0	1	1	2	2	11	
Lincoln	0	0	0	0	0	0	2	0	1	0	3	
Linn	1	0	0	1	1	0	0	0	0	0	3	
Malheur	0	0	0	0	0	0	0	0	0	0	0	
Marion	0	1	2	4	0	0	1	1	0	0	9	
Morrow	0	0	0	0	0	0	0	0	0	0	0	
Multnomah	0	1	0	1	1	0	8	3	1	3	18	
Polk	1	0	0	0	0	0	0	0	0	0	1	
Sherman	0	0	0	0	0	0	0	0	0	0	0	
Tillamook	0	0	0	0	0	0	0	0	2	0	2	
Umatilla	0	0	0	0	0	0	0	0	0	0	0	
Union	0	0	0	0	0	0	0	0	0	1	1	
Wallowa	0	0	0	0	0	0	0	0	0	0	0	
Wasco	0	0	0	0	1	0	1	0	1	0	3	
Washington	0	0	2	1	1	3	1	4	0	2	14	
Wheeler	0	0	0	0	0	0	0	0	0	0	0	
Yamhill	0	0	0	0	0	1	0	0	0	0	1	
Total	4	6	11	12	7	5	17	13	8	15	98	

Oregon Lyme disease Cases
January-October

	Age Group in Years												Total
	00-04	05-09	10-14	15-19	20-24	25-29	30-39	40-49	50-59	60-69	70-79	80+	
2003	0	0	2	0	2	2	1	1	3	2	1	0	14
2004	0	3	3	0	3	1	3	5	3	3	0	0	24
2005	1	2	0	0	1	2	2	5	7	2	0	1	23
2006	1	1	1	0	0	1	2	3	2	5	1	1	18
2007	1	1	1	0	1	2	6	7	5	1	1	0	26
2008	0	2	2	5	2	1	3	5	10	3	1	0	34
2009	2	3	0	2	1	4	7	8	5	7	1	0	40
2010	1	1	2	2	1	5	7	5	3	5	3	0	35
2011	2	1	0	2	3	1	5	5	5	5	1	1	31
2012	1	3	1	5	0	4	9	13	5	10	1	1	53
Total	9	17	12	16	14	23	45	57	48	43	10	4	298

	Sex			Total
	F	M	U	
2003	10	4	0	14
2004	15	9	0	24
2005	15	8	0	23
2006	5	13	0	18
2007	18	9	0	27
2008	18	16	0	34
2009	29	11	0	40
2010	23	12	0	35
2011	18	13	0	31
2012	36	17	0	53
Total	187	112	0	299

	Race					Total
	A	B	N	W	U	
2003	0	0	0	9	5	14
2004	0	0	0	23	1	24
2005	0	0	0	21	2	23
2006	0	0	0	16	2	18
2007	0	1	0	20	6	27
2008	0	0	0	30	4	34
2009	1	0	1	31	7	40
2010	0	0	0	28	7	35
2011	0	0	1	20	10	31
2012	1	0	0	37	15	53
Total	2	1	2	235	59	299

Baker	0	0	0	0	0	0	0	1	0	0	1
Benton	2	1	2	2	1	2	0	5	1	5	21
Clackamas	1	2	1	1	2	1	0	1	2	1	12
Clatsop	0	0	0	0	0	1	0	0	0	0	1
Columbia	0	0	0	1	0	0	0	1	0	1	3
Coos	0	0	0	0	1	0	0	2	0	2	5
Crook	0	0	1	0	0	0	0	0	0	0	1
Curry	1	0	0	0	0	0	1	0	0	0	2
Deschutes	0	0	1	0	0	1	1	0	0	1	4
Douglas	1	4	0	1	1	1	2	2	4	8	24
Gilliam	0	1	0	0	0	0	0	0	0	0	1
Grant	0	0	0	0	0	0	1	0	0	0	1
Harney	0	0	0	0	0	0	0	0	0	0	0
Hood River	0	0	2	0	3	1	2	0	0	1	9
Jackson	1	1	4	1	4	4	6	1	5	5	32
Jefferson	0	0	0	0	0	0	0	0	0	0	0
Josephine	0	5	3	3	4	4	2	2	3	14	40
Klamath	0	0	0	1	0	1	2	0	1	0	5
Lake	0	0	0	1	0	0	0	0	0	0	1
Lane	0	1	1	1	0	2	6	1	4	3	19
Lincoln	0	1	0	0	0	1	0	0	0	0	2
Linn	1	1	0	1	1	0	0	2	1	1	8
Malheur	0	0	0	0	1	0	0	0	0	0	1
Marion	2	1	1	2	1	1	0	1	0	0	9
Morrow	0	1	0	0	0	0	0	0	0	0	1
Multnomah	4	3	2	3	5	9	10	11	8	7	62
Polk	0	0	2	0	0	1	0	1	0	1	5
Sherman	0	0	0	0	0	0	0	0	0	0	0
Tillamook	0	0	1	0	1	0	0	0	0	0	2
Umatilla	0	0	0	0	0	0	1	0	0	0	1
Union	0	0	0	0	0	1	1	1	1	0	4
Wallowa	0	0	0	0	0	0	0	0	0	0	0
Wasco	0	0	0	0	0	2	0	0	0	2	4
Washington	1	2	1	0	1	1	2	3	0	1	12
Wheeler	0	0	0	0	0	0	0	0	0	0	0
Yamhill	0	0	1	0	1	0	3	0	1	0	6
Total	14	24	23	18	27	34	40	35	31	53	299

Oregon Malaria Cases
January-October

	Age Group in Years												Total
	00-04	05-09	10-14	15-19	20-24	25-29	30-39	40-49	50-59	60-69	70-79	80+	
2003	0	1	1	0	1	1	2	1	1	0	0	0	8
2004	0	0	0	3	1	1	4	5	2	0	0	0	16
2005	1	1	0	0	2	0	2	2	2	2	0	0	12
2006	3	0	0	0	3	0	1	1	2	1	0	0	11
2007	0	2	0	1	2	3	1	2	0	2	0	0	13
2008	0	0	0	0	0	0	3	1	0	0	0	0	4
2009	0	0	1	1	0	1	3	3	2	1	0	0	12
2010	0	0	1	0	2	3	5	2	0	1	0	0	14
2011	0	0	1	4	2	3	3	1	2	0	0	0	16
2012	0	0	0	1	3	2	1	1	1	1	0	0	10
Total	4	4	4	10	16	14	25	19	12	8	0	0	116

	Sex			Total
	F	M	U	
2003	2	6	0	8
2004	8	7	1	16
2005	6	6	0	12
2006	4	7	0	11
2007	4	9	0	13
2008	1	3	0	4
2009	4	8	0	12
2010	2	12	0	14
2011	11	5	0	16
2012	6	4	0	10
Total	48	67	1	116

	Race					Total
	A	B	N	W	U	
2003	0	2	0	6	0	8
2004	0	5	0	8	3	16
2005	1	2	0	8	1	12
2006	1	5	0	3	2	11
2007	1	4	0	7	1	13
2008	0	2	0	2	0	4
2009	0	2	0	9	1	12
2010	0	7	0	6	1	14
2011	1	2	0	11	2	16
2012	0	1	0	9	0	10
Total	4	32	0	69	11	116

Baker	0	0	0	0	0	0	0	0	0	0	0	0	0
Benton	0	0	1	2	1	0	0	0	0	0	1	5	
Clackamas	2	0	0	1	1	0	1	1	0	1	7		
Clatsop	0	0	0	0	0	0	0	0	0	0	0	0	
Columbia	0	0	0	0	0	0	0	0	0	0	0	0	
Coos	1	0	0	0	0	0	0	0	0	0	0	1	
Crook	0	0	0	0	0	0	0	0	0	1	1		
Curry	0	0	0	0	0	0	0	0	0	0	0	0	
Deschutes	0	1	1	1	0	1	1	0	0	0	5		
Douglas	0	0	1	0	0	0	0	0	0	0	1		
Gilliam	0	0	0	0	0	0	0	0	0	0	0	0	
Grant	0	0	0	0	0	0	0	0	0	0	0	0	
Harney	0	0	0	0	0	0	0	0	0	0	0	0	
Hood River	1	0	0	0	0	0	0	0	0	0	1		
Jackson	1	1	0	0	0	0	0	0	0	0	2		
Jefferson	0	0	0	0	0	0	0	0	0	0	0	0	
Josephine	0	0	0	0	0	0	1	0	0	0	1		
Klamath	0	0	1	0	0	0	0	0	0	0	1		
Lake	0	0	0	0	0	0	0	0	0	0	0	0	
Lane	1	1	0	0	0	0	1	0	1	1	5		
Lincoln	0	0	0	0	0	0	0	0	0	0	0	0	
Linn	0	1	1	0	0	0	0	0	4	0	6		
Malheur	0	0	0	0	0	0	0	0	0	0	0	0	
Marion	0	2	0	0	2	0	0	2	2	1	9		
Morrow	0	0	0	0	0	0	0	0	0	0	0	0	
Multnomah	2	3	5	3	7	3	5	6	7	3	44		
Polk	0	0	1	0	0	0	0	0	0	0	1		
Sherman	0	0	0	0	0	0	0	0	0	0	0	0	
Tillamook	0	0	0	0	0	0	0	0	0	0	0	0	
Umatilla	0	0	0	0	0	0	0	0	0	0	0	0	
Union	0	0	0	0	0	0	0	0	0	0	0	0	
Wallowa	0	0	0	0	0	0	0	0	0	0	0	0	
Wasco	0	0	0	0	1	0	0	0	1	0	2		
Washington	0	6	1	4	1	0	3	4	1	2	22		
Wheeler	0	0	0	0	0	0	0	0	0	0	0	0	
Yamhill	0	1	0	0	0	0	0	1	0	0	2		
Total	8	16	12	11	13	4	12	14	16	10	116		

Oregon Meningococcal Disease Cases
January-October

	Age Group in Years												Total
	00-04	05-09	10-14	15-19	20-24	25-29	30-39	40-49	50-59	60-69	70-79	80+	
2003	15	2	2	7	4	1	2	5	3	4	2	2	49
2004	15	7	2	5	6	4	2	3	1	2	2	3	52
2005	8	1	1	11	8	1	2	3	3	0	2	2	42
2006	4	0	0	6	8	2	1	3	4	2	4	1	35
2007	8	2	1	2	0	3	0	0	2	2	1	6	27
2008	11	0	0	3	1	1	0	3	1	3	4	4	31
2009	11	2	1	4	2	0	3	3	0	1	0	4	31
2010	10	1	3	3	4	1	2	0	0	2	0	0	26
2011	9	1	1	3	4	0	1	1	1	2	2	3	28
2012	7	1	0	2	2	0	2	1	2	1	2	0	20
Total	98	17	11	46	39	13	15	22	17	19	19	25	341

	Sex			Total
	F	M	U	
2003	23	26	0	49
2004	21	31	0	52
2005	22	20	0	42
2006	20	15	0	35
2007	14	13	0	27
2008	21	9	1	31
2009	14	17	0	31
2010	5	21	0	26
2011	16	12	0	28
2012	9	11	0	20
Total	165	175	1	341

	Race					Total
	A	B	N	W	U	
2003	2	0	1	41	5	49
2004	0	1	1	45	5	52
2005	1	3	1	31	6	42
2006	0	0	0	31	4	35
2007	0	0	1	24	2	27
2008	0	1	0	27	3	31
2009	0	1	0	25	5	31
2010	0	2	3	19	2	26
2011	0	0	0	27	1	28
2012	0	1	0	16	3	20
Total	3	9	7	286	36	341

Baker	1	0	0	0	0	0	0	0	0	0	0	1
Benton	0	2	1	1	0	0	0	1	0	0	0	5
Clackamas	2	4	3	1	1	1	3	0	0	1	16	
Clatsop	0	0	1	1	0	2	0	0	1	2	7	
Columbia	2	1	1	0	0	0	0	0	0	0	4	
Coos	0	1	2	1	3	0	1	1	1	1	11	
Crook	0	1	0	0	0	0	0	0	3	2	6	
Curry	0	0	0	0	0	0	0	0	0	1	1	
Deschutes	2	2	0	2	2	2	1	2	5	1	19	
Douglas	3	8	3	5	0	2	1	7	1	1	31	
Gilliam	0	0	0	0	0	0	0	0	0	0	0	
Grant	0	0	0	0	0	0	0	0	0	0	0	
Harney	0	0	0	0	0	0	0	0	0	0	0	
Hood River	0	0	0	0	0	0	0	0	0	0	0	
Jackson	5	5	5	2	1	1	2	2	2	0	25	
Jefferson	0	0	1	0	0	0	0	0	0	0	1	
Josephine	0	2	2	0	0	2	1	2	0	1	10	
Klamath	2	2	2	1	0	1	1	1	0	0	10	
Lake	0	0	0	0	0	0	0	0	0	0	0	
Lane	6	5	5	1	3	2	5	2	3	5	37	
Lincoln	1	3	0	0	2	4	0	0	1	0	11	
Linn	1	1	1	1	2	1	0	1	0	0	8	
Malheur	0	0	0	0	0	0	0	0	1	1	2	
Marion	4	4	2	3	2	4	0	2	1	0	22	
Morrow	0	1	0	0	0	0	1	0	0	0	2	
Multnomah	7	5	7	6	5	4	7	2	6	2	51	
Polk	3	1	1	2	0	0	0	2	0	0	9	
Sherman	0	0	0	0	0	0	0	0	0	0	0	
Tillamook	1	0	0	1	1	0	0	0	0	0	3	
Umatilla	1	0	0	0	1	1	0	0	0	0	3	
Union	1	0	0	0	0	0	0	0	0	0	1	
Wallowa	0	0	0	0	0	0	0	0	0	0	0	
Wasco	0	0	0	0	0	1	1	0	0	1	3	
Washington	6	4	4	2	0	2	3	1	3	1	26	
Wheeler	0	0	0	0	0	0	0	0	0	0	0	
Yamhill	1	0	1	5	4	1	4	0	0	0	16	
Total	49	52	42	35	27	31	31	26	28	20	341	

Oregon Pertussis Cases
January-October

	Age Group in Years												Total
	00-04	05-09	10-14	15-19	20-24	25-29	30-39	40-49	50-59	60-69	70-79	80+	
2003	93	44	82	44	24	20	39	36	13	4	0	0	399
2004	69	39	94	66	11	15	33	25	22	2	3	0	379
2005	169	73	144	71	24	8	42	38	17	10	1	2	599
2006	33	5	6	15	6	3	9	11	3	0	2	0	93
2007	35	15	11	14	3	10	11	7	3	3	0	2	114
2008	65	28	25	8	4	2	9	5	1	2	1	0	150
2009	101	26	34	26	5	6	11	11	7	3	5	1	236
2010	79	43	49	17	2	7	10	11	9	6	2	0	235
2011	97	73	59	10	0	5	8	7	13	4	3	1	280
2012	248	146	247	71	19	13	38	40	13	9	6	2	852
Total	989	492	751	342	98	89	210	191	101	43	23	8	3337

	Sex			Total
	F	M	U	
2003	212	192	0	404
2004	198	186	2	386
2005	316	292	3	611
2006	51	42	2	95
2007	69	45	1	115
2008	72	78	0	150
2009	132	103	3	238
2010	129	106	0	235
2011	145	136	0	281
2012	442	410	0	852
Total	1766	1590	11	3367

	Race					Total
	A	B	N	W	U	
2003	2	11	5	307	79	404
2004	6	2	0	309	69	386
2005	23	2	5	499	82	611
2006	4	0	3	77	11	95
2007	3	3	1	98	10	115
2008	0	0	0	137	13	150
2009	0	6	2	192	38	238
2010	3	2	2	205	23	235
2011	2	2	3	246	28	281
2012	14	13	6	728	91	852
Total	57	41	27	2798	444	3367

Baker	0	0	0	0	0	0	0	0	0	0	0	0	0
Benton	2	151	45	0	1	0	12	4	9	17	241	0	0
Clackamas	7	15	36	1	4	9	35	5	42	82	236	0	0
Clatsop	0	0	9	0	0	11	1	1	9	21	52	0	0
Columbia	0	10	0	0	0	4	1	3	3	8	29	0	0
Coos	0	2	5	2	0	0	10	3	0	6	28	0	0
Crook	0	0	1	1	0	0	0	0	0	0	2	0	0
Curry	0	0	10	0	0	0	0	3	0	0	13	0	0
Deschutes	0	2	23	0	1	3	4	6	1	3	43	0	0
Douglas	14	31	0	0	0	0	21	4	3	0	73	0	0
Gilliam	0	0	0	5	0	0	0	0	0	0	5	0	0
Grant	0	0	0	0	0	0	0	0	0	0	0	0	0
Harney	0	0	0	0	8	0	0	0	0	0	10	0	0
Hood River	2	1	5	1	0	0	1	0	0	6	16	0	0
Jackson	133	3	21	8	0	8	12	39	5	3	232	0	0
Jefferson	0	0	0	0	0	0	0	0	1	0	1	0	0
Josephine	2	4	9	0	0	1	9	17	3	3	48	0	0
Klamath	28	2	5	9	0	2	0	0	2	0	48	0	0
Lake	0	0	1	0	0	0	0	0	0	0	1	0	0
Lane	135	57	119	14	12	16	26	42	42	26	489	0	0
Lincoln	1	0	26	0	6	0	0	7	1	6	47	0	0
Linn	3	33	21	2	13	1	12	9	2	18	114	0	0
Malheur	0	0	0	0	0	0	0	0	0	11	11	0	0
Marion	4	10	113	6	1	32	13	17	35	46	277	0	0
Morrow	3	0	0	4	0	0	0	0	0	1	8	0	0
Multnomah	54	21	83	23	22	33	46	53	91	237	663	0	0
Polk	4	5	14	0	2	4	1	5	5	25	65	0	0
Sherman	0	0	0	0	0	0	0	0	0	0	0	0	0
Tillamook	0	0	0	1	0	0	0	2	0	1	4	0	0
Umatilla	0	1	2	1	0	1	9	0	1	20	35	0	0
Union	0	1	1	0	22	0	4	0	0	3	31	0	0
Wallowa	0	0	1	0	0	1	0	0	0	0	2	0	0
Wasco	0	1	3	1	0	0	1	0	2	2	10	0	0
Washington	11	36	45	16	18	19	16	11	22	277	471	0	0
Wheeler	0	0	0	0	0	0	0	0	0	0	0	0	0
Yamhill	1	0	13	0	5	5	4	4	2	28	62	0	0
Total	404	386	611	95	115	150	238	235	281	852	3367	0	0

Oregon Vibrio parahaemolytic Cases
January-October

	Age Group in Years												Total
	00-04	05-09	10-14	15-19	20-24	25-29	30-39	40-49	50-59	60-69	70-79	80+	
2003	0	0	0	0	0	1	2	1	2	0	0	0	6
2004	0	0	0	1	1	2	3	2	2	0	1	0	12
2005	0	0	0	0	0	1	1	2	0	1	1	1	7
2006	0	0	0	0	1	2	5	3	4	3	0	1	19
2007	0	0	0	0	1	2	2	2	1	0	0	0	8
2008	0	0	0	0	0	2	3	4	1	1	0	1	12
2009	0	0	0	1	1	1	5	3	5	0	1	1	18
2010	0	0	0	0	2	1	5	6	3	5	2	2	26
2011	0	0	0	0	0	1	2	2	0	1	0	0	6
2012	0	0	0	0	1	1	3	3	4	3	3	1	19
Total	0	0	0	2	7	14	31	28	22	14	8	7	133

	Sex			Total
	F	M	U	
2003	2	4	0	6
2004	2	10	0	12
2005	2	5	0	7
2006	7	12	0	19
2007	1	7	0	8
2008	3	9	0	12
2009	3	15	0	18
2010	6	20	0	26
2011	1	5	0	6
2012	5	14	0	19
Total	32	101	0	133

	Race					Total
	A	B	N	W	U	
2003	0	0	0	5	1	6
2004	0	1	0	11	0	12
2005	0	0	0	7	0	7
2006	0	0	0	16	3	19
2007	0	0	1	5	2	8
2008	1	0	0	10	1	12
2009	0	0	0	15	3	18
2010	1	0	1	23	1	26
2011	0	0	0	6	0	6
2012	0	1	0	18	0	19
Total	2	2	2	116	11	133

Baker	0	0	0	0	0	0	0	0	0	0	0	0	0
Benton	1	0	0	1	0	2	1	0	0	0	0	0	5
Clackamas	0	0	0	3	0	0	4	3	1	2	13		
Clatsop	0	0	0	0	0	2	1	0	1	0	4		
Columbia	0	0	0	0	0	1	0	0	0	0	1		
Coos	1	0	0	0	0	0	1	1	0	1	4		
Crook	0	0	0	0	0	0	0	2	0	0	2		
Curry	0	0	0	0	0	0	0	0	0	0	0		
Deschutes	0	2	2	1	0	0	3	4	0	0	12		
Douglas	0	0	0	0	0	0	0	0	0	0	0		
Gilliam	0	0	0	0	0	0	0	0	0	0	0		
Grant	0	0	0	0	0	0	0	0	0	0	0		
Harney	0	0	0	0	0	0	0	0	0	0	0		
Hood River	0	0	0	0	0	0	1	0	0	0	1		
Jackson	0	0	0	1	0	0	1	1	1	0	4		
Jefferson	0	0	0	0	0	0	0	0	0	0	0		
Josephine	0	0	1	0	1	0	0	0	0	0	2		
Klamath	0	3	0	0	0	0	0	0	0	0	3		
Lake	0	0	0	0	0	0	0	0	0	0	0		
Lane	0	1	1	7	1	0	1	0	0	2	13		
Lincoln	1	0	0	0	0	0	0	0	0	1	2		
Linn	0	0	0	1	0	0	0	1	0	0	2		
Malheur	0	0	0	0	0	0	0	0	0	0	0		
Marion	0	0	0	0	0	1	1	2	0	0	4		
Morrow	0	0	0	0	0	0	0	0	0	0	0		
Multnomah	2	5	1	4	3	3	3	7	0	8	36		
Polk	0	0	0	0	0	0	0	1	0	0	1		
Sherman	0	0	0	0	0	0	0	0	0	0	0		
Tillamook	0	0	0	0	0	0	0	0	0	0	0		
Umatilla	0	0	0	0	0	0	0	1	0	0	1		
Union	0	0	0	0	0	0	0	0	0	0	0		
Wallowa	0	0	0	0	0	0	0	0	0	0	0		
Wasco	0	0	0	0	0	0	0	0	0	0	0		
Washington	0	1	2	1	3	3	1	2	3	5	21		
Wheeler	0	0	0	0	0	0	0	0	0	0	0		
Yamhill	1	0	0	0	0	0	0	1	0	0	2		
Total	6	12	7	19	8	12	18	26	6	19	133		

Oregon Salmonella Cases
January-October

	Age Group in Years												Total
	00-04	05-09	10-14	15-19	20-24	25-29	30-39	40-49	50-59	60-69	70-79	80+	
2003	57	21	14	16	36	29	51	54	41	22	16	11	368
2004	50	30	19	28	28	30	43	47	38	17	21	28	379
2005	67	30	21	23	22	27	58	47	21	20	10	18	364
2006	65	26	17	13	27	32	41	44	38	29	20	9	361
2007	54	20	10	19	19	21	29	40	30	16	14	11	283
2008	82	24	16	21	28	26	40	38	31	38	15	15	374
2009	76	31	20	25	27	27	43	47	40	25	19	12	392
2010	61	31	27	19	32	32	58	60	58	34	22	14	448
2011	71	12	11	22	27	22	38	32	34	18	15	12	314
2012	54	17	12	18	31	17	51	39	35	32	19	14	339
Total	637	242	167	204	277	263	452	448	366	251	171	144	3622

	Sex			Total
	F	M	U	
2003	200	171	0	371
2004	204	177	0	381
2005	190	172	2	364
2006	191	170	0	361
2007	138	144	1	283
2008	199	175	0	374
2009	213	179	0	392
2010	238	210	0	448
2011	170	145	0	315
2012	180	159	0	339
Total	1923	1702	3	3628

	Race					Total
	A	B	N	W	U	
2003	10	3	2	317	39	371
2004	30	7	3	296	45	381
2005	22	2	5	291	44	364
2006	15	7	4	282	53	361
2007	6	3	4	240	30	283
2008	9	4	3	310	48	374
2009	19	11	5	316	41	392
2010	14	12	6	379	37	448
2011	13	3	6	263	30	315
2012	8	5	3	284	39	339
Total	146	57	41	2978	406	3628

Baker	29	3	0	1	2	0	2	0	2	2	2	41
Benton	10	2	8	8	9	8	10	8	3	3	3	69
Clackamas	33	63	35	19	34	35	37	30	37	41	364	
Clatsop	3	1	5	4	1	3	1	3	1	3	25	
Columbia	3	3	3	3	3	3	1	0	7	1	27	
Coos	4	4	6	3	5	8	6	5	6	4	51	
Crook	1	4	2	2	3	1	0	0	4	1	18	
Curry	0	0	0	1	0	1	4	2	1	0	9	
Deschutes	14	10	13	11	14	11	9	16	13	14	125	
Douglas	7	6	9	10	8	13	7	87	5	12	164	
Gilliam	0	0	0	0	0	0	0	0	0	0	0	
Grant	0	0	0	0	0	0	0	0	0	0	0	
Harney	0	1	2	1	0	1	1	0	0	3	9	
Hood River	1	1	0	2	2	3	1	3	6	2	21	
Jackson	16	23	19	15	24	24	28	19	10	16	194	
Jefferson	2	1	1	2	1	2	0	3	5	0	17	
Josephine	3	4	5	10	3	10	4	12	2	6	59	
Klamath	7	1	3	4	4	4	5	11	7	5	51	
Lake	0	0	0	0	1	1	3	1	1	1	8	
Lane	39	34	47	30	22	29	28	33	36	36	334	
Lincoln	7	5	4	2	3	3	5	2	1	3	35	
Linn	10	12	7	18	9	17	13	10	13	11	120	
Malheur	3	3	5	3	5	4	2	3	0	3	31	
Marion	44	43	31	35	23	25	41	34	24	33	333	
Morrow	4	1	3	1	0	1	0	0	2	2	14	
Multnomah	60	58	70	73	50	67	92	92	63	65	690	
Polk	4	5	7	5	5	6	6	3	5	7	53	
Sherman	0	0	0	0	0	0	0	1	0	0	1	
Tillamook	1	1	4	1	0	2	1	3	0	3	16	
Umatilla	10	20	12	6	5	13	9	6	7	3	91	
Union	4	4	2	2	3	3	3	1	3	2	27	
Wallowa	0	0	0	0	0	0	0	0	2	0	2	
Warm Sprin	0	0	0	0	0	0	0	0	0	1	1	
Wasco	0	2	5	7	3	4	4	4	2	4	35	
Washington	45	54	45	67	38	61	60	51	40	41	502	
Wheeler	0	0	0	0	0	0	0	0	0	0	0	
Yamhill	7	12	11	15	3	11	9	5	7	11	91	
Total	371	381	364	361	283	374	392	448	315	339	3628	

Oregon Shigella Cases
January-October

	Age Group in Years												Total
	00-04	05-09	10-14	15-19	20-24	25-29	30-39	40-49	50-59	60-69	70-79	80+	
2003	68	52	9	8	6	11	21	18	4	3	1	0	201
2004	11	7	4	6	4	6	10	14	2	2	2	0	68
2005	17	14	6	8	4	7	13	19	22	3	3	0	116
2006	18	9	4	3	4	9	17	15	13	10	6	2	110
2007	9	11	3	3	4	4	14	7	10	1	3	0	69
2008	19	10	7	4	3	10	9	7	6	5	1	0	81
2009	11	7	3	2	3	3	8	2	4	1	0	0	44
2010	5	8	1	0	1	4	9	6	7	4	1	0	46
2011	11	5	1	6	3	8	4	4	4	4	1	1	52
2012	8	8	4	7	6	4	14	9	10	5	1	1	77
Total	177	131	42	47	38	66	119	101	82	38	19	4	864

	Sex			Total
	F	M	U	
2003	106	95	0	201
2004	35	33	0	68
2005	63	53	0	116
2006	61	52	0	113
2007	33	37	0	70
2008	46	40	0	86
2009	23	21	0	44
2010	25	22	0	47
2011	35	17	0	52
2012	28	49	0	77
Total	455	419	0	874

	Race					Total
	A	B	N	W	U	
2003	7	1	1	136	56	201
2004	6	1	0	46	15	68
2005	0	1	0	79	36	116
2006	3	1	0	92	17	113
2007	2	2	0	57	9	70
2008	0	1	2	64	19	86
2009	5	0	1	30	8	44
2010	1	2	2	32	10	47
2011	1	1	1	42	7	52
2012	1	2	0	54	20	77
Total	26	12	7	632	197	874

Baker	1	0	0	0	0	0	0	0	0	0	0	1
Benton	0	1	4	8	0	1	3	2	3	0	0	22
Clackamas	18	5	6	1	2	5	2	3	4	1	0	47
Clatsop	0	5	1	0	0	0	1	0	0	0	12	19
Columbia	0	4	0	0	1	0	0	0	0	0	0	5
Coos	0	0	0	1	0	0	0	0	0	0	2	3
Crook	0	0	0	0	0	0	0	0	0	0	0	0
Curry	0	0	0	0	0	0	0	0	0	0	0	0
Deschutes	1	2	1	0	2	2	4	1	0	0	0	13
Douglas	0	0	26	0	0	0	0	1	0	0	0	27
Gilliam	0	0	0	0	0	0	0	0	0	0	0	0
Grant	0	0	0	0	0	0	0	0	0	0	0	0
Harney	0	0	0	0	0	0	0	0	0	1	0	1
Hood River	0	2	0	2	1	1	4	1	0	0	0	11
Jackson	7	3	9	2	3	6	1	1	1	1	1	34
Jefferson	1	1	0	0	5	6	1	2	0	0	0	16
Josephine	0	2	1	2	0	1	0	0	0	0	0	6
Klamath	0	0	2	1	0	2	0	0	0	0	0	5
Lake	0	0	0	0	0	0	0	0	0	0	0	0
Lane	4	3	4	5	4	7	3	7	8	5	5	50
Lincoln	1	0	1	0	0	0	0	2	1	1	1	6
Linn	1	0	5	1	1	0	2	0	3	0	0	13
Malheur	4	0	1	1	0	0	0	0	0	0	0	6
Marion	113	6	17	13	1	6	9	11	13	8	8	197
Morrow	0	0	0	0	2	0	0	0	0	0	0	2
Multnomah	22	22	18	20	26	21	7	7	14	30	18	187
Polk	0	1	2	1	1	6	0	0	0	0	1	12
Sherman	0	0	0	0	0	0	0	0	0	0	0	0
Tillamook	0	0	0	0	0	0	0	0	0	0	0	0
Umatilla	7	0	2	1	1	10	0	0	0	0	0	21
Union	0	0	1	0	0	2	1	1	1	1	2	8
Wallowa	0	1	0	0	0	0	0	0	0	0	0	1
Warm Sprin	0	0	0	0	0	0	0	0	1	0	0	1
Wasco	0	0	3	2	7	0	0	0	0	0	0	12
Washington	21	8	12	18	12	10	6	6	3	14	11	110
Wheeler	0	0	0	0	0	0	0	0	0	0	0	0
Yamhill	0	2	0	34	1	0	0	1	0	0	0	38
Total	201	68	116	113	70	86	44	47	52	77	8	874

For a breakdown of Tuberculosis by county and quarter of report in 2012 please visit

<http://public.health.oregon.gov/DiseasesConditions/CommunicableDisease/Tuberculosis/Documents/cascount.pdf>

Oregon West Nile Cases
January-October

	Age Group in Years												Total
	00-04	05-09	10-14	15-19	20-24	25-29	30-39	40-49	50-59	60-69	70-79	80+	
2003	0	0	0	0	0	0	1	2	0	1	0	0	4
2004	0	0	1	0	2	0	0	2	0	0	0	0	5
2005	0	0	0	0	0	2	3	3	1	0	0	0	9
2006	0	0	2	8	2	3	15	14	15	7	7	1	74
2007	0	0	0	1	2	1	3	4	10	3	2	1	27
2008	0	0	0	1	0	1	4	1	4	4	1	0	16
2009	0	0	0	1	1	2	1	2	3	2	0	1	13
2010	0	0	0	0	0	0	0	0	0	0	0	0	0
2011	0	0	0	0	0	0	0	0	0	0	0	0	0
2012	0	0	0	1	0	0	0	1	4	2	3	2	13
Total	0	0	3	12	7	9	27	29	37	19	13	5	161

	Sex			Total
	F	M	U	
2003	2	2	0	4
2004	3	2	0	5
2005	5	4	0	9
2006	45	29	0	74
2007	12	15	0	27
2008	9	7	0	16
2009	8	5	0	13
2010	0	0	0	0
2011	0	0	0	0
2012	3	10	0	13
Total	87	74	0	161

	Race					Total
	A	B	N	W	U	
2003	0	0	0	4	0	4
2004	0	0	0	3	2	5
2005	0	0	0	8	1	9
2006	0	0	0	64	10	74
2007	1	0	1	25	0	27
2008	0	0	0	15	1	16
2009	0	0	0	12	1	13
2010	0	0	0	0	0	0
2011	0	0	0	0	0	0
2012	0	0	0	11	2	13
Total	1	0	1	142	17	161

Race: A=Asian/Pacific Islander N=Native American B=Black W=White U=Other/Unknown

Baker	0	0	0	9	2	0	0	0	0	0	0	11
Benton	0	1	1	0	0	0	0	0	0	0	0	2
Clackamas	0	0	0	0	1	0	0	0	0	0	0	1
Clatsop	0	0	0	0	0	0	0	0	0	0	0	0
Columbia	0	0	0	0	0	0	0	0	0	0	0	0
Coos	0	0	0	0	0	0	0	0	0	0	1	1
Crook	0	0	0	0	0	0	0	0	0	0	0	0
Curry	0	0	0	0	0	0	0	0	0	0	0	0
Deschutes	1	0	0	1	0	0	0	0	0	0	1	3
Douglas	0	0	0	1	1	1	0	0	0	0	0	3
Gilliam	0	0	0	0	0	0	0	0	0	0	0	0
Grant	0	0	0	0	0	0	0	0	0	0	0	0
Harney	0	0	0	6	0	0	0	0	0	0	0	6
Hood River	0	0	0	0	0	0	0	0	0	0	0	0
Jackson	0	1	1	0	0	0	0	0	0	0	0	2
Jefferson	0	0	0	0	0	0	0	0	0	0	0	0
Josephine	0	0	0	0	0	0	0	0	0	0	0	0
Klamath	0	0	0	0	2	1	0	0	0	0	0	3
Lake	0	0	0	0	0	0	0	0	0	0	0	0
Lane	0	0	1	0	1	0	0	0	0	0	1	3
Lincoln	0	0	0	0	0	0	0	0	0	0	0	0
Linn	0	0	0	0	0	0	0	0	0	0	0	0
Malheur	0	2	4	54	11	14	10	0	0	0	8	103
Marion	0	0	1	0	1	0	0	0	0	0	0	2
Morrow	0	0	0	0	0	0	1	0	0	0	0	1
Multnomah	1	1	0	1	1	0	1	0	0	0	1	6
Polk	1	0	1	0	1	0	0	0	0	0	0	3
Sherman	0	0	0	0	0	0	0	0	0	0	0	0
State Of O	0	0	0	0	0	0	0	0	0	0	1	1
Tillamook	0	0	0	0	0	0	0	0	0	0	0	0
Umatilla	0	0	0	1	0	0	1	0	0	0	0	2
Union	0	0	0	1	5	0	0	0	0	0	0	6
Wallowa	0	0	0	0	1	0	0	0	0	0	0	1
Wasco	1	0	0	0	0	0	0	0	0	0	0	1
Washington	0	0	0	0	0	0	0	0	0	0	0	0
Wheeler	0	0	0	0	0	0	0	0	0	0	0	0
Yamhill	0	0	0	0	0	0	0	0	0	0	0	0
Total	4	5	9	74	27	16	13	0	0	0	13	161

Oregon Yersinia Cases
January-October

	Age Group in Years												Total
	00-04	05-09	10-14	15-19	20-24	25-29	30-39	40-49	50-59	60-69	70-79	80+	
2003	1	0	1	0	1	0	0	0	1	0	0	0	4
2004	1	1	1	1	3	0	1	1	3	0	0	0	12
2005	1	1	0	0	0	0	2	6	1	2	1	1	15
2006	4	3	0	0	0	2	1	1	0	3	0	0	14
2007	7	0	0	2	0	0	1	0	3	0	2	2	17
2008	5	0	1	1	0	1	1	4	1	2	0	0	16
2009	5	3	1	0	1	1	1	3	1	1	0	1	18
2010	2	3	0	0	1	1	1	1	2	3	1	0	15
2011	3	0	0	1	0	1	0	2	4	3	1	0	15
2012	5	0	1	0	3	0	1	1	5	1	3	0	20
Total	34	11	5	5	9	6	9	19	21	15	8	4	146

	Sex			Total
	F	M	U	
2003	2	2	0	4
2004	8	4	0	12
2005	10	5	0	15
2006	5	9	0	14
2007	4	13	0	17
2008	8	8	0	16
2009	12	6	0	18
2010	9	6	0	15
2011	6	9	0	15
2012	9	11	0	20
Total	73	73	0	146

	Race					Total
	A	B	N	W	U	
2003	0	0	0	4	0	4
2004	1	0	0	9	2	12
2005	2	0	0	11	2	15
2006	1	0	0	13	0	14
2007	1	0	0	12	4	17
2008	2	0	0	12	2	16
2009	5	0	0	13	0	18
2010	1	0	0	10	4	15
2011	1	1	0	13	0	15
2012	1	0	0	15	4	20
Total	15	1	0	112	18	146

Baker	1	0	0	0	0	0	0	0	0	0	0	1
Benton	0	0	0	0	0	0	0	0	0	0	0	0
Clackamas	1	2	3	1	4	9	3	3	1	4	31	
Clatsop	0	1	0	0	0	0	0	1	0	0	2	
Columbia	0	1	0	0	0	1	0	0	0	0	2	
Coos	0	0	0	0	2	0	0	0	0	1	3	
Crook	0	0	0	0	0	0	0	1	0	0	1	
Curry	0	0	0	0	0	1	1	0	0	0	2	
Deschutes	0	0	0	2	0	0	1	0	1	0	4	
Douglas	0	0	0	0	0	0	0	0	0	0	0	
Gilliam	0	0	0	0	0	0	0	0	0	0	0	
Grant	0	0	0	0	0	0	0	0	0	0	0	
Harney	0	0	0	0	0	0	0	0	0	0	0	
Hood River	0	0	0	0	0	0	0	0	0	0	0	
Jackson	0	1	0	0	0	0	0	1	0	2	4	
Jefferson	0	0	0	0	1	0	0	0	0	0	1	
Josephine	0	0	0	0	0	1	0	0	0	1	2	
Klamath	0	0	0	2	0	0	0	0	0	0	2	
Lake	0	0	0	0	0	0	0	0	0	0	0	
Lane	1	2	1	1	5	0	3	0	1	0	14	
Lincoln	0	0	0	0	0	0	0	0	0	0	0	
Linn	0	0	0	1	0	0	0	0	1	0	2	
Malheur	0	0	0	0	0	0	0	1	0	0	1	
Marion	0	0	0	1	0	0	0	0	1	4	6	
Morrow	0	0	1	0	0	0	0	0	0	0	1	
Multnomah	0	4	6	4	3	3	6	2	4	4	36	
Polk	0	0	0	0	0	0	0	0	0	0	0	
Sherman	0	0	1	0	0	0	0	0	0	0	1	
Tillamook	0	0	0	0	0	0	0	0	0	0	0	
Umatilla	0	0	1	1	1	0	1	1	4	1	10	
Union	1	0	0	1	0	0	0	0	0	0	2	
Wallowa	0	0	0	0	0	0	0	0	0	0	0	
Wasco	0	0	0	0	0	0	0	0	0	0	0	
Washington	0	1	1	0	1	1	3	4	1	3	15	
Wheeler	0	0	0	0	0	0	0	0	0	0	0	
Yamhill	0	0	1	0	0	0	0	1	1	0	3	
Total	4	12	15	14	17	16	18	15	15	20	146	