

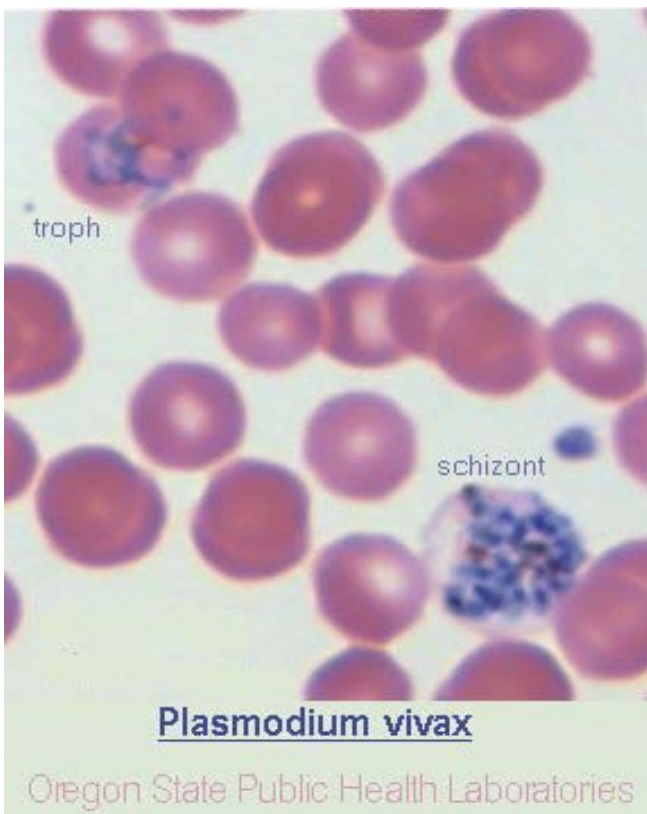
Oregon Health Authority

Public Health Division
Center for Public Health Practice

July 2013

MEMENTO MORBI

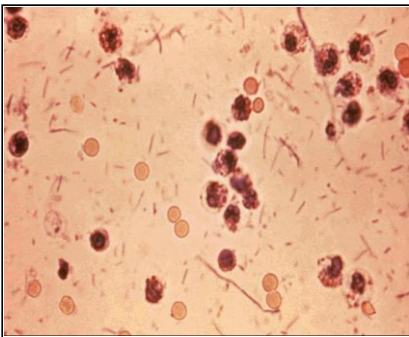
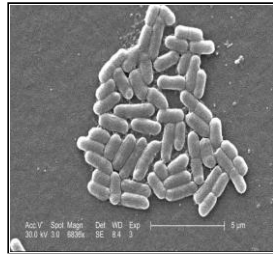
A Monthly Communicable Disease Surveillance Report



Oregon
Health
Authority

Table of Contents

About Memento Morbi	3
Notifiable Diseases by Month	4
Notifiable Diseases by County	6
Notifiable Diseases of Low Incidence	9
Sexually Transmitted Diseases: Chlamydia, gonorrhea, HIV, syphilis	10
Notifiable Diseases by Age, Sex, Race and County	11



About *Memento Morbi*

This monthly report contains an early source of infectious disease surveillance data for Oregon. These data are important for monitoring early trends of notifiable infectious diseases and for targeting prevention and control efforts. The purpose of this document is to summarize important information data users should know about the report to facilitate proper analysis and interpretation.

1. This report comprises compilations of data received by offices of the Oregon State Public Health Division (OSPHD).
2. The diseases reportable by law may increase or decrease over time.
3. The reporting status of diseases included may be determined by state law or be acquired through voluntary submissions.
4. Data are provisional and subject to change upon the completion of ongoing disease investigations.
5. *Memento Morbi* is prepared in the two weeks following the end of the calendar month; delayed case reports would be included in later issues. The same would apply to subsequent differences resulting from duplicates or erroneous data entries in individual reports.
6. Temporal distributions are generally based upon the date of onset or if unavailable, the next available date for epidemiologic purposes, including date of specimen collection, date reported to the local health department, or date reported to OSPHD. Exceptions include tuberculosis cases by date of report to CDC and HIV/AIDS reported by date of diagnosis, STDs by local health report date.
7. Starting in August of 2012, the STD data are now presented in more detail on the website

<http://public.health.oregon.gov/DISEASES/CONDITIONS/COMMUNICABLEDISEASE/DISEASESURVEILLANCEDATA/STD/Pages/index.aspx#countyquarter>

and the HIV data at

<http://public.health.oregon.gov/DiseasesConditions/CommunicableDisease/DiseaseSurveillanceData/HIVData/Pages/epiprofile.aspx>

8. Data pertaining to race and ethnicity may be incomplete and may have been collected differently for the various notifiable diseases and across time.

In Summary

These data are subject to change, reflecting recent entry of information received from reporting sources.

Reported Cases of Selected Notifiable Diseases or Conditions in Oregon by Month
2013

	Jan	Feb	Mar	Apr	May	Jun	Jul	YTD
Botulism	1	0	0	0	0	2	0	3
Brucellosis	0	0	1	0	0	0	0	1
Campylobacter	46	41	56	55	62	107	125	492
Ciguatera	0	0	1	0	0	0	0	1
Cryptosporidiosis	10	4	7	10	9	9	44	93
Dengue Fever	0	1	0	0	0	0	2	3
E. coli(STEC)	3	2	14	8	7	14	25	73
Giardiasis	33	19	19	33	21	13	49	187
HUS	0	0	3	1	1	1	3	9
Haemophilus influenza	14	10	5	12	10	8	2	61
Hantavirus pulmonary	0	0	1	0	0	0	0	1
Hepatitis A (acute)	3	0	2	2	2	1	4	14
Hepatitis B (acute)	2	5	5	1	2	3	7	25
Hepatitis B (chronic)	43	28	24	43	45	33	42	258
Hepatitis C (acute)	0	1	3	2	0	2	2	10
Hepatitis C (chronic)	344	329	339	363	306	294	300	2275
Legionellosis	2	5	1	2	4	2	0	16
Leishmaniasis	0	0	0	0	1	0	0	1
Listeriosis	0	0	1	0	0	0	1	2
Lyme disease	1	3	5	6	1	8	9	33
Malaria	0	0	0	0	2	2	1	5
Measles	3	0	0	0	0	0	0	3
Meningococcal Disease	2	1	1	1	2	0	2	9
Mumps	0	1	0	1	0	1	0	3
Pertussis	35	27	28	39	51	54	80	314
Psittacosis	0	0	0	1	0	0	0	1
Q fever	1	0	0	0	0	0	0	1
Rubella	0	0	0	0	0	0	1	1
Salmonella	12	15	32	39	22	31	48	199
Shigella	4	6	2	5	4	2	4	27
Tetanus	0	0	0	1	0	0	0	1
Tularemia	0	0	0	0	0	1	0	1
Typhus (murine)	0	0	0	0	1	0	0	1
Vibrio parahaemolytic	0	0	1	0	1	0	10	12
West Nile	0	0	0	0	0	0	1	1
Yersinia	4	3	1	8	1	0	2	19
YTD	563	501	552	633	555	588	764	4156

Reported Cases of Selected Notifiable Diseases or Conditions in Oregon by Month
2012

	Jan	Feb	Mar	Apr	May	Jun	Jul	YTD
Botulism	0	0	0	0	0	3	0	3
Campylobacter	63	45	55	69	63	105	117	517
Ciguatera	0	0	0	1	0	0	0	1
Colorado Tick Fever	0	0	0	0	1	0	0	1
Cryptosporidiosis	11	10	22	25	9	23	22	122
Cyclosporiasis	0	0	0	0	1	0	0	1
Dengue Fever	0	1	0	0	0	0	0	1
E. coli(STEC)	5	8	6	24	14	19	23	99
Giardiasis	23	30	36	30	24	22	34	199
HUS	0	0	0	5	1	1	2	9
Haemophilus influenza	10	5	8	10	5	4	8	50
Hantavirus pulmonary	0	0	0	0	1	0	1	2
Hepatitis A (acute)	1	0	0	0	0	0	0	1
Hepatitis B (acute)	4	2	2	3	0	1	5	17
Hepatitis B (chronic)	34	30	36	28	35	36	31	230
Hepatitis C (acute)	5	5	5	3	3	0	7	28
Hepatitis C (chronic)	406	438	416	433	419	365	384	2861
Legionellosis	4	2	3	2	4	3	2	20
Listeriosis	3	1	0	3	2	2	2	13
Lyme disease	1	4	9	2	2	4	10	32
Malaria	1	0	0	0	0	2	2	5
Measles	0	0	0	1	0	0	0	1
Meningococcal Disease	7	2	3	2	1	3	1	19
Mumps	1	0	0	0	0	0	0	1
Pertussis	27	40	59	132	160	150	140	708
Plague	0	0	0	0	0	2	0	2
Q fever	0	0	0	1	0	2	0	3
Relapsing Fever	0	0	0	1	0	1	0	2
Rocky Mtn Spotted fev	0	0	0	0	0	1	0	1
Salmonella	16	23	21	37	30	45	42	214
Shigella	4	5	8	6	1	8	11	43
Taeniasis	0	1	0	0	1	0	1	3
Vibrio parahaemolytic	0	0	1	0	0	1	5	7
West Nile	0	0	0	0	0	1	1	2
Yersinia	2	0	5	2	3	2	2	16
YTD	628	652	695	820	780	806	853	5234

Reported Cases of Select Notifiable Diseases or Conditions in Oregon by County
January-July 2013

	Baker	Benton	Clackamas	Clatsop	Columbia	Coos	Crook	Curry	Deschutes	Douglas	Grant	Harney	Hood River
Botulism	0	0	0	0	0	0	0	0	1	0	0	0	0
Brucellosis	0	0	0	0	0	0	0	0	0	0	0	0	0
Campylobacter	1	15	49	4	10	7	6	4	27	10	1	2	4
Ciguatera	0	0	0	0	0	0	0	0	0	0	0	0	0
Cryptosporidiosis	25	1	7	2	1	0	0	0	2	7	0	1	0
Dengue Fever	0	1	1	0	0	0	0	0	0	0	0	0	0
E. coli(STEC)	0	3	4	0	0	1	0	0	2	0	0	0	2
Giardiasis	0	5	19	3	1	0	0	1	8	4	0	0	0
HUS	0	0	2	0	0	0	0	0	0	0	0	0	0
Haemophilus influenza	0	2	3	2	0	1	1	0	5	1	1	0	0
Hantavirus pulmonary	0	0	0	0	0	0	0	0	1	0	0	0	0
Hepatitis A (acute)	1	1	1	0	0	0	0	0	1	0	0	0	0
Hepatitis B (acute)	0	1	1	0	1	1	0	0	0	0	0	0	0
Hepatitis B (chronic)	0	6	23	5	4	2	0	0	4	3	0	0	2
Hepatitis C (acute)	0	0	4	0	0	0	0	0	1	0	0	0	0
Hepatitis C (chronic)	14	22	198	26	26	27	6	13	97	81	3	6	2
Legionellosis	0	0	2	0	0	0	0	0	0	0	0	0	0
Leishmaniasis	0	0	0	0	0	0	0	0	0	0	0	0	0
Listeriosis	0	0	0	0	0	0	0	0	0	0	0	0	0
Lyme disease	0	2	1	0	0	0	0	0	4	4	1	0	0
Malaria	0	0	2	0	0	0	0	0	0	0	0	0	0
Measles	0	0	0	0	0	0	0	0	0	0	0	0	0
Meningococcal Disease	0	0	2	0	0	0	0	0	0	0	0	0	0
Mumps	0	0	1	0	0	0	0	0	0	0	0	0	0
Pertussis	0	4	18	2	1	19	0	0	0	3	0	0	0
Psittacosis	0	0	0	0	1	0	0	0	0	0	0	0	0
Q fever	0	0	0	0	0	0	0	0	0	0	0	0	0
Rubella	0	0	0	0	0	0	0	0	0	0	0	0	0
Salmonella	1	3	19	4	2	4	6	1	14	4	0	0	2
Shigella	0	0	2	0	0	0	0	0	0	0	0	0	0
Tetanus	0	0	0	0	0	0	0	0	0	0	0	0	0
Tularemia	0	0	0	0	0	0	0	0	0	0	0	0	0
Typhus (murine)	0	0	0	0	0	0	0	0	0	1	0	0	0
Vibrio parahaemolytic	0	3	1	0	0	1	0	0	1	1	0	0	0
West Nile	0	0	0	0	0	0	0	0	0	0	0	0	0
Yersinia	1	0	1	0	0	1	0	1	0	0	0	0	0
All	43	69	361	48	47	64	19	20	168	119	6	9	12

Reported Cases of Select Notifiable Diseases or Conditions in Oregon by County
January-July 2013

	Jackson	Jefferson	Josephine	Klamath	Lake	Lane	Lincoln	Linn	Malheur	Marion	Morrow	Multnomah	Out Of Sta
Botulism	0	0	0	0	0	0	0	0	0	0	0	1	0
Brucellosis	0	0	0	0	0	0	0	0	0	1	0	0	0
Campylobacter	16	3	2	13	2	44	5	17	3	25	1	133	0
Ciguatera	0	0	0	0	0	0	0	0	0	0	0	1	0
Cryptosporidiosis	2	0	0	2	0	3	1	3	0	4	0	13	0
Dengue Fever	0	0	0	1	0	0	0	0	0	0	0	0	0
E. coli(STEC)	3	0	2	4	0	5	0	5	1	13	0	12	0
Giardiasis	8	1	4	1	0	18	0	2	1	5	0	69	0
HUS	2	0	0	1	0	0	0	1	0	2	0	1	0
Haemophilus influenza	6	0	1	1	0	10	2	4	2	4	0	9	0
Hantavirus pulmonary	0	0	0	0	0	0	0	0	0	0	0	0	0
Hepatitis A (acute)	2	0	0	0	0	0	1	0	0	2	0	2	1
Hepatitis B (acute)	2	0	1	0	0	1	0	0	0	2	0	9	0
Hepatitis B (chronic)	3	2	4	3	0	18	1	3	2	17	0	106	0
Hepatitis C (acute)	1	0	0	0	0	2	1	0	0	1	0	0	0
Hepatitis C (chronic)	126	52	57	47	11	258	46	90	32	205	0	426	4
Legionellosis	1	0	0	0	0	4	0	1	0	0	0	6	0
Leishmaniasis	0	0	0	0	0	0	0	0	0	0	0	1	0
Listeriosis	0	0	1	0	0	0	0	0	0	0	0	0	0
Lyme disease	2	0	5	1	0	1	0	1	0	0	0	8	0
Malaria	0	0	0	0	0	0	0	0	0	0	0	3	0
Measles	0	0	0	0	0	0	0	0	0	3	0	0	0
Meningococcal Disease	0	0	0	0	0	1	0	1	0	2	0	1	0
Mumps	0	0	0	0	0	1	0	0	0	0	0	0	0
Pertussis	17	1	35	32	0	72	0	11	0	43	0	37	0
Psittacosis	0	0	0	0	0	0	0	0	0	0	0	0	0
Q fever	0	0	0	1	0	0	0	0	0	0	0	0	0
Rubella	0	0	0	0	0	0	0	0	0	1	0	0	0
Salmonella	6	2	2	3	0	20	3	5	3	10	2	38	0
Shigella	0	0	0	0	0	1	0	1	0	6	0	15	0
Tetanus	1	0	0	0	0	0	0	0	0	0	0	0	0
Tularemia	1	0	0	0	0	0	0	0	0	0	0	0	0
Typhus (murine)	0	0	0	0	0	0	0	0	0	0	0	0	0
Vibrio parahaemolytic	0	0	0	0	0	2	0	1	0	0	0	2	0
West Nile	0	0	0	0	0	0	0	0	1	0	0	0	0
Yersinia	1	0	0	0	0	4	0	1	0	1	0	5	0
All	200	61	114	110	13	465	60	147	45	347	3	898	5

Reported Cases of Select Notifiable Diseases or Conditions in Oregon by County
January-July 2013

	Polk	Sherman	Tillamook	Umatilla	Union	Wallowa	Wasco	Washington	Wheeler	Yamhill	All
Botulism	0	0	0	1	0	0	0	0	0	0	3
Brucellosis	0	0	0	0	0	0	0	0	0	0	1
Campylobacter	9	1	2	8	0	3	1	54	0	10	492
Ciguatera	0	0	0	0	0	0	0	0	0	0	1
Cryptosporidiosis	0	0	3	0	3	0	0	13	0	0	93
Dengue Fever	0	0	0	0	0	0	0	0	0	0	3
E. coli(STEC)	1	0	1	0	1	0	0	11	0	2	73
Giardiasis	1	0	2	3	1	0	1	26	0	3	187
HUS	0	0	0	0	0	0	0	0	0	0	9
Haemophilus influenza	2	0	0	0	0	0	0	3	0	1	61
Hantavirus pulmonary	0	0	0	0	0	0	0	0	0	0	1
Hepatitis A (acute)	0	0	0	0	1	0	0	1	0	0	14
Hepatitis B (acute)	0	0	0	0	0	0	0	4	0	2	25
Hepatitis B (chronic)	4	0	0	2	0	0	1	43	0	0	258
Hepatitis C (acute)	0	0	0	0	0	0	0	0	0	0	10
Hepatitis C (chronic)	36	0	12	41	9	3	13	223	0	63	2275
Legionellosis	0	0	0	0	0	0	0	2	0	0	16
Leishmaniasis	0	0	0	0	0	0	0	0	0	0	1
Listeriosis	0	0	0	0	0	0	0	1	0	0	2
Lyme disease	0	0	1	0	0	0	1	0	1	0	33
Malaria	0	0	0	0	0	0	0	0	0	0	5
Measles	0	0	0	0	0	0	0	0	0	0	3
Meningococcal Disease	0	0	0	0	0	0	1	1	0	0	9
Mumps	0	0	0	0	0	0	0	0	0	1	3
Pertussis	5	0	0	1	2	0	0	9	0	2	314
Psittacosis	0	0	0	0	0	0	0	0	0	0	1
Q fever	0	0	0	0	0	0	0	0	0	0	1
Rubella	0	0	0	0	0	0	0	0	0	0	1
Salmonella	5	1	1	5	1	0	2	21	0	9	199
Shigella	0	0	0	0	0	0	0	2	0	0	27
Tetanus	0	0	0	0	0	0	0	0	0	0	1
Tularemia	0	0	0	0	0	0	0	0	0	0	1
Typhus (murine)	0	0	0	0	0	0	0	0	0	0	1
Vibrio parahaemolytic	0	0	0	0	0	0	0	0	0	0	12
West Nile	0	0	0	0	0	0	0	0	0	0	1
Yersinia	0	0	0	0	0	0	0	3	0	0	19
All	63	2	22	61	18	6	20	417	1	93	4156

For a breakdown of Chlamydia, Gonorrhea, HIV, or Early Syphilis in Oregon by county and quarter of report in 2012 please visit

Chlamydia, Gonorrhea, or Early Syphilis

<http://public.health.oregon.gov/DISEASES/CONDITIONS/COMMUNICABLEDISEASE/DISEASESURVEILLANCE/STDPAGES/index.aspx#countyquarter>

HIV

<http://public.health.oregon.gov/DiseasesConditions/CommunicableDisease/DiseaseSurveillanceData/HIVData/Pages/epiprofile.aspx>

Oregon Campylobacter Cases
January-July

	Age Group in Years												Total
	00-04	05-09	10-14	15-19	20-24	25-29	30-39	40-49	50-59	60-69	70-79	80+	
2004	35	16	16	23	22	30	48	62	56	42	26	10	386
2005	36	21	20	24	22	24	63	59	66	38	22	10	405
2006	42	19	14	20	42	23	51	60	57	32	22	7	389
2007	45	23	10	23	38	21	56	58	66	31	24	16	411
2008	53	18	15	19	23	24	57	64	82	41	11	6	413
2009	57	20	10	16	28	32	67	65	71	48	25	17	456
2010	67	22	12	29	29	53	57	62	63	52	27	14	487
2011	61	25	23	23	29	44	76	67	81	72	26	21	548
2012	44	14	14	18	35	29	83	80	80	80	26	14	517
2013	45	25	10	25	29	44	81	57	73	60	27	16	492
Total	485	203	144	220	297	324	639	634	695	496	236	131	4504

	Sex			Total
	F	M	U	
2004	179	207	0	386
2005	189	215	1	405
2006	186	203	0	389
2007	178	229	4	411
2008	190	223	0	413
2009	216	242	0	458
2010	204	284	0	488
2011	262	288	0	550
2012	257	260	0	517
2013	225	267	0	492
Total	2086	2418	5	4509

	Race					Total
	A	B	N	W	U	
2004	3	0	2	252	129	386
2005	2	2	5	203	193	405
2006	4	3	1	193	188	389
2007	3	1	0	166	241	411
2008	1	4	5	190	213	413
2009	6	2	1	202	247	458
2010	2	6	3	258	219	488
2011	5	2	0	271	272	550
2012	4	1	3	291	218	517
2013	6	2	3	284	197	492
Total	36	23	23	2310	2117	4509

	2004	2005	2006	2007	2008	2009	2010	2011	2012	2013	Total
Baker	0	0	3	1	2	2	2	3	1	1	15
Benton	12	12	17	15	12	15	25	10	6	15	139
Clackamas	45	40	33	50	38	38	35	61	52	49	441
Clatsop	3	2	4	9	2	2	5	4	6	4	41
Columbia	5	3	6	0	2	1	3	3	4	10	37
Coos	5	4	4	7	10	9	7	16	12	7	81
Crook	2	2	1	1	5	6	6	4	3	6	36
Curry	2	2	0	1	6	7	4	5	2	4	33
Deschutes	24	23	18	27	28	17	35	32	33	27	264
Douglas	4	9	6	9	11	5	10	13	10	10	87
Gilliam	0	0	0	0	0	0	0	2	0	0	2
Grant	3	0	0	0	3	1	1	3	1	1	13
Harney	2	3	4	3	3	4	1	4	0	2	26
Hood River	2	1	1	1	1	2	2	3	4	4	21
Jackson	13	19	13	23	21	24	14	28	25	16	196
Jefferson	3	3	4	2	4	4	0	3	4	3	30
Josephine	10	5	8	2	1	4	7	8	4	2	51
Klamath	6	17	9	3	5	8	5	13	10	13	89
Lake	4	2	1	1	1	3	3	2	0	2	19
Lane	36	44	35	37	49	44	53	47	42	44	431
Lincoln	4	5	6	1	1	4	5	4	6	5	41
Linn	13	14	18	12	17	24	16	18	24	17	173
Malheur	11	7	7	4	6	3	3	6	5	3	55
Marion	21	30	20	38	27	30	33	37	44	25	305
Morrow	3	1	0	0	1	4	2	3	1	1	16
Multnomah	68	77	70	82	76	109	112	104	104	133	935
Polk	2	6	4	4	5	6	6	5	11	9	58
Sherman	0	0	0	0	0	0	1	0	0	1	2
Tillamook	5	4	2	2	4	2	0	4	1	2	26
Umatilla	5	7	19	5	4	6	10	5	7	8	76
Union	5	3	6	5	6	2	2	5	6	0	40
Wallowa	2	0	0	0	1	0	2	0	3	3	11
Wasco	1	1	2	2	3	3	3	2	5	1	23
Washington	56	45	62	54	55	60	62	77	69	54	594
Wheeler	0	0	0	0	0	0	0	0	0	0	0
Yamhill	9	14	6	10	3	9	13	16	12	10	102
Total	386	405	389	411	413	458	488	550	517	492	4509

Oregon Cryptosporidiosis Cases
January-July

	Age Group in Years												Total
	00-04	05-09	10-14	15-19	20-24	25-29	30-39	40-49	50-59	60-69	70-79	80+	
2004	1	3	0	1	2	1	2	5	3	1	1	0	20
2005	5	0	1	0	2	7	4	6	3	0	1	0	29
2006	5	5	5	1	2	8	4	5	6	2	0	3	46
2007	2	2	0	6	5	9	10	9	6	1	5	1	56
2008	10	1	3	4	4	5	7	4	5	5	1	0	49
2009	6	3	4	3	10	10	21	24	15	13	11	8	128
2010	5	3	0	7	11	5	12	15	19	13	7	5	102
2011	10	4	4	7	13	11	17	13	16	14	12	3	124
2012	3	6	4	8	10	15	23	13	15	14	9	2	122
2013	7	6	2	6	8	8	13	12	18	7	3	3	93
Total	54	33	23	43	67	79	113	106	106	70	50	25	769

	Sex			Total
	F	M	U	
2004	9	11	0	20
2005	15	14	0	29
2006	25	22	0	47
2007	39	17	0	56
2008	24	25	0	49
2009	75	53	1	129
2010	61	41	0	102
2011	81	43	0	124
2012	72	50	0	122
2013	62	31	0	93
Total	463	307	1	771

	Race					Total
	A	B	N	W	U	
2004	0	0	0	12	8	20
2005	0	0	0	19	10	29
2006	0	1	0	28	18	47
2007	0	0	1	26	29	56
2008	0	2	0	44	3	49
2009	2	1	0	111	15	129
2010	2	3	2	85	10	102
2011	2	1	2	105	14	124
2012	4	0	1	109	8	122
2013	3	1	1	83	5	93
Total	13	9	7	622	120	771

	2004	2005	2006	2007	2008	2009	2010	2011	2012	2013	Total
Baker	0	0	0	0	0	0	0	0	0	25	25
Benton	0	0	1	0	1	0	1	11	1	1	16
Clackamas	4	4	2	5	12	28	13	12	16	7	103
Clatsop	0	0	0	0	0	3	1	4	1	2	11
Columbia	0	0	0	1	0	6	3	1	3	1	15
Coos	1	0	0	0	0	0	1	0	1	0	3
Crook	0	0	9	0	0	0	0	1	0	0	10
Curry	0	0	0	0	0	2	0	0	0	0	2
Deschutes	1	0	0	1	1	2	0	0	0	2	7
Douglas	0	0	1	0	1	6	3	1	7	7	26
Gilliam	0	0	0	0	0	0	0	0	0	0	0
Grant	0	0	0	0	0	0	0	1	0	0	1
Harney	0	0	0	0	2	1	0	0	0	1	4
Hood River	0	0	1	1	1	1	0	0	2	0	6
Jackson	1	6	8	15	6	23	6	2	4	2	73
Jefferson	0	0	0	0	0	0	1	0	0	0	1
Josephine	0	1	0	1	0	3	1	0	1	0	7
Klamath	1	0	3	1	0	0	1	1	1	2	10
Lake	0	0	1	0	0	0	0	0	0	0	1
Lane	2	3	2	4	2	9	9	8	6	3	48
Lincoln	0	0	0	0	0	1	2	3	2	1	9
Linn	0	0	0	0	0	1	5	6	4	3	19
Malheur	1	1	0	2	0	0	0	0	2	0	6
Marion	0	2	1	0	0	4	8	9	3	4	31
Morrow	0	1	0	1	0	0	0	1	0	0	3
Multnomah	4	9	13	19	14	21	30	37	38	13	198
Polk	0	0	0	0	0	0	0	0	0	0	0
Sherman	0	0	0	0	0	0	0	0	0	0	0
Tillamook	0	0	1	2	4	2	0	3	7	3	22
Umatilla	0	0	0	0	0	0	0	0	1	0	1
Union	0	0	0	0	0	1	1	1	0	3	6
Wallowa	0	0	0	0	0	0	0	0	0	0	0
Wasco	0	0	0	0	0	0	1	0	0	0	1
Washington	5	2	4	3	5	13	14	20	22	13	101
Wheeler	0	0	0	0	0	0	0	0	0	0	0
Yamhill	0	0	0	0	0	2	1	2	0	0	5
Total	20	29	47	56	49	129	102	124	122	93	771

Oregon E. coli(STEC) Cases
January-July

	Age Group in Years												Total
	00-04	05-09	10-14	15-19	20-24	25-29	30-39	40-49	50-59	60-69	70-79	80+	
2004	7	8	1	1	2	1	2	2	3	0	1	0	28
2005	8	4	17	1	1	0	3	3	3	0	0	0	40
2006	4	6	4	2	1	3	4	3	3	4	2	3	39
2007	4	2	2	2	3	1	1	3	4	3	1	3	29
2008	6	3	2	5	2	1	1	1	2	0	2	0	25
2009	5	2	1	4	0	1	1	1	2	2	0	1	20
2010	8	4	6	7	1	2	2	5	0	4	4	1	44
2011	15	4	7	8	3	4	1	2	1	4	4	4	57
2012	28	9	18	5	6	5	8	4	6	4	2	4	99
2013	8	9	10	11	8	3	10	4	2	3	5	0	73
Total	93	51	68	46	27	21	33	28	26	24	21	16	454

	Sex			Total
	F	M	U	
2004	15	13	0	28
2005	21	19	0	40
2006	16	23	0	39
2007	18	11	0	29
2008	12	13	0	25
2009	12	8	0	20
2010	18	26	0	44
2011	36	21	0	57
2012	44	55	0	99
2013	42	31	0	73
Total	234	220	0	454

	Race					Total
	A	B	N	W	U	
2004	0	0	0	21	7	28
2005	3	0	0	34	3	40
2006	1	0	0	37	1	39
2007	0	1	0	26	2	29
2008	2	0	0	22	1	25
2009	1	0	0	17	2	20
2010	0	0	0	42	2	44
2011	0	0	0	54	3	57
2012	0	0	3	84	12	99
2013	0	1	2	62	8	73
Total	7	2	5	399	41	454

	2004	2005	2006	2007	2008	2009	2010	2011	2012	2013	Total
Baker	0	0	0	0	0	0	0	1	0	0	1
Benton	1	3	1	3	0	1	2	3	1	3	18
Clackamas	0	5	5	2	0	3	3	4	13	4	39
Clatsop	1	0	0	1	0	0	0	4	1	0	7
Columbia	0	0	0	0	0	0	0	0	1	0	1
Coos	0	0	0	1	0	0	0	0	0	1	2
Crook	1	1	1	0	1	0	1	0	1	0	6
Curry	0	0	0	0	0	0	0	0	0	0	0
Deschutes	0	0	3	1	1	0	2	2	4	2	15
Douglas	1	1	2	1	3	4	1	3	8	0	24
Gilliam	0	0	0	0	0	0	0	0	0	0	0
Grant	0	0	0	0	0	1	0	1	0	0	2
Harney	0	1	0	0	0	0	0	0	2	0	3
Hood River	0	0	0	0	0	0	0	1	0	2	3
Jackson	3	1	2	1	1	1	4	3	2	3	21
Jefferson	0	0	0	0	0	0	0	0	1	0	1
Josephine	0	1	0	0	0	0	0	0	1	2	4
Klamath	0	0	1	0	0	0	0	0	4	4	9
Lake	0	0	0	1	1	0	0	0	3	0	5
Lane	2	10	3	1	1	0	2	2	5	5	31
Lincoln	0	0	0	1	1	0	0	0	0	0	2
Linn	0	3	1	3	1	0	5	3	9	5	30
Malheur	2	0	0	0	0	0	0	3	0	1	6
Marion	6	4	5	2	5	0	4	2	16	13	57
Morrow	0	0	0	2	0	0	0	0	0	0	2
Multnomah	2	6	6	7	5	1	7	9	8	12	63
Polk	1	1	1	1	1	2	2	0	2	1	12
Sherman	0	0	0	0	0	0	0	0	0	0	0
Tillamook	1	0	0	0	0	0	0	0	1	1	3
Umatilla	0	0	3	0	2	0	0	1	1	0	7
Union	0	0	0	0	0	0	0	0	0	1	1
Wallowa	0	0	0	0	0	0	0	0	1	0	1
Wasco	0	0	0	0	0	0	2	0	0	0	2
Washington	5	3	4	1	1	5	7	11	11	11	59
Wheeler	0	0	0	0	0	0	0	1	0	0	1
Yamhill	2	0	1	0	1	2	2	3	3	2	16
Total	28	40	39	29	25	20	44	57	99	73	454

Oregon Giardiasis Cases
January-July

	Age Group in Years												Total
	00-04	05-09	10-14	15-19	20-24	25-29	30-39	40-49	50-59	60-69	70-79	80+	
2004	32	19	11	5	17	17	36	35	32	18	6	2	230
2005	43	25	6	9	7	10	30	27	35	8	5	3	208
2006	39	20	5	8	12	15	39	32	27	20	6	1	224
2007	41	17	5	7	19	11	26	37	34	18	8	4	227
2008	48	22	13	12	12	16	38	27	38	26	4	4	260
2009	36	27	16	9	14	18	22	22	21	21	5	1	212
2010	59	20	10	10	11	16	37	36	34	22	7	5	267
2011	40	19	13	12	13	16	23	36	32	17	3	3	227
2012	22	12	13	19	15	11	30	24	23	18	9	3	199
2013	27	19	7	5	12	18	21	27	22	20	8	1	187
Total	387	200	99	96	132	148	302	303	298	188	61	27	2241

	Sex			Total
	F	M	U	
2004	103	128	0	231
2005	105	102	2	209
2006	103	119	6	228
2007	99	126	3	228
2008	117	142	1	260
2009	95	116	2	213
2010	121	147	1	269
2011	97	129	1	227
2012	82	117	0	199
2013	90	97	0	187
Total	1012	1223	16	2251

	Race					Total
	A	B	N	W	U	
2004	4	6	5	117	99	231
2005	6	6	2	101	94	209
2006	2	7	0	107	112	228
2007	11	11	2	97	107	228
2008	13	20	0	112	115	260
2009	7	9	3	82	112	213
2010	3	31	1	99	135	269
2011	1	26	2	78	120	227
2012	4	11	5	78	101	199
2013	7	17	3	65	95	187
Total	58	144	23	936	1090	2251

	2004	2005	2006	2007	2008	2009	2010	2011	2012	2013	Total
Baker	0	2	3	0	0	0	0	0	0	0	5
Benton	3	4	6	6	13	6	8	8	7	5	66
Clackamas	15	19	19	16	15	14	16	14	11	19	158
Clatsop	9	5	2	2	1	0	1	1	1	3	25
Columbia	2	4	0	0	3	4	2	1	1	1	18
Coos	3	3	2	5	4	12	7	3	2	0	41
Crook	1	0	0	0	1	0	0	0	0	0	2
Curry	0	0	1	0	1	2	1	1	1	1	8
Deschutes	16	7	20	16	26	11	25	12	14	8	155
Douglas	5	15	9	5	11	4	3	5	6	4	67
Gilliam	0	0	0	0	0	0	0	1	0	0	1
Grant	0	0	0	0	2	0	1	0	0	0	3
Harney	0	0	1	0	0	0	0	1	0	0	2
Hood River	1	0	2	2	2	2	0	0	0	0	9
Jackson	11	6	18	10	10	15	8	9	4	8	99
Jefferson	4	0	1	0	1	1	1	2	0	1	11
Josephine	5	5	2	3	3	3	4	3	3	4	35
Klamath	0	1	3	4	4	3	3	4	2	1	25
Lake	0	0	1	0	0	1	1	0	1	0	4
Lane	42	15	25	35	25	21	24	24	23	18	252
Lincoln	3	2	3	3	0	3	7	1	2	0	24
Linn	7	3	4	8	6	4	5	3	9	2	51
Malheur	1	0	0	1	1	0	2	1	0	1	7
Marion	9	14	14	12	13	4	10	12	13	5	106
Morrow	0	0	0	1	0	1	1	1	0	0	4
Multnomah	50	59	52	63	72	68	90	76	67	69	666
Polk	3	3	1	6	6	5	5	3	2	1	35
Sherman	0	0	0	0	0	0	0	0	0	0	0
Tillamook	0	4	1	1	4	1	0	1	0	2	14
Umatilla	2	4	0	1	3	2	7	3	7	3	32
Union	0	0	0	0	1	3	2	1	0	1	8
Wallowa	0	0	1	1	0	1	0	0	0	0	3
Warm Sprin	0	0	0	0	0	1	0	0	0	0	1
Wasco	2	0	2	0	0	2	1	4	1	1	13
Washington	35	32	33	23	29	13	30	27	16	26	264
Wheeler	0	0	0	0	0	0	0	0	0	0	0
Yamhill	2	2	2	4	3	6	4	5	6	3	37
Total	231	209	228	228	260	213	269	227	199	187	2251

Oregon Haemophilus influenzae Cases
January-July

	Age Group in Years												Total
	00-04	05-09	10-14	15-19	20-24	25-29	30-39	40-49	50-59	60-69	70-79	80+	
2004	2	2	1	0	0	0	1	3	4	3	5	8	29
2005	4	1	0	2	1	0	1	1	6	5	7	7	35
2006	2	1	0	0	1	0	0	3	2	3	2	10	24
2007	7	0	0	0	2	0	2	2	2	10	6	13	44
2008	2	1	1	0	0	1	3	3	5	8	2	8	34
2009	5	0	0	0	1	1	0	1	5	6	5	7	31
2010	2	2	1	1	1	0	0	4	7	7	5	9	39
2011	2	1	0	1	0	2	3	1	8	14	10	11	53
2012	4	2	1	0	0	0	1	2	15	10	9	6	50
2013	7	2	0	1	1	0	2	5	7	12	11	13	61
Total	37	12	4	5	7	4	13	25	61	78	62	92	400

	Sex			Total
	F	M	U	
2004	16	13	0	29
2005	22	13	0	35
2006	15	9	0	24
2007	21	22	1	44
2008	21	13	0	34
2009	9	22	0	31
2010	21	18	0	39
2011	28	25	0	53
2012	24	26	0	50
2013	36	25	0	61
Total	213	186	1	400

	Race					Total
	A	B	N	W	U	
2004	0	0	1	20	8	29
2005	1	1	0	26	7	35
2006	1	0	0	16	7	24
2007	0	0	0	37	7	44
2008	1	0	1	26	6	34
2009	0	1	0	19	11	31
2010	0	0	0	33	6	39
2011	1	0	0	38	14	53
2012	0	0	1	36	13	50
2013	0	0	0	48	13	61
Total	4	2	3	299	92	400

	2004	2005	2006	2007	2008	2009	2010	2011	2012	2013	Total
Baker	0	0	0	0	0	0	0	0	0	0	0
Benton	0	0	1	2	0	1	0	1	0	2	7
Clackamas	0	2	3	7	2	1	2	7	2	3	29
Clatsop	0	0	0	0	0	0	2	0	0	2	4
Columbia	0	0	0	1	0	1	1	1	0	0	4
Coos	2	2	1	2	2	1	2	2	0	1	15
Crook	0	1	0	0	1	0	0	0	0	1	3
Curry	0	0	0	0	0	0	0	0	1	0	1
Deschutes	1	1	0	2	3	1	1	1	1	5	16
Douglas	2	0	0	0	1	0	1	3	1	1	9
Gilliam	0	0	0	0	0	0	0	0	0	0	0
Grant	0	0	0	0	0	0	0	0	0	1	1
Harney	0	0	0	0	0	0	0	0	0	0	0
Hood River	0	0	0	0	0	0	0	0	0	0	0
Jackson	2	4	3	5	2	0	2	2	5	6	31
Jefferson	0	1	0	0	0	1	0	0	1	0	3
Josephine	0	1	3	2	4	4	2	7	2	1	26
Klamath	2	0	0	2	0	0	0	2	1	1	8
Lake	0	0	0	0	0	0	0	0	0	0	0
Lane	3	2	6	9	4	4	5	4	5	10	52
Lincoln	0	0	0	0	0	1	0	1	1	2	5
Linn	1	2	0	0	4	0	1	1	1	4	14
Malheur	0	0	0	0	0	0	0	0	0	2	2
Marion	1	7	2	0	4	3	2	4	9	4	36
Morrow	0	0	0	0	0	0	1	0	0	0	1
Multnomah	7	8	4	4	4	9	5	14	11	9	75
Polk	0	0	0	0	0	0	2	1	0	2	5
Sherman	0	0	0	0	0	0	0	0	0	0	0
Tillamook	0	0	0	0	0	0	1	0	0	0	1
Umatilla	0	0	0	1	0	0	0	0	3	0	4
Union	0	0	0	1	0	0	0	0	2	0	3
Wallowa	0	0	0	0	0	0	0	0	0	0	0
Wasco	0	0	0	0	0	1	0	0	0	0	1
Washington	6	4	1	4	3	2	6	2	3	3	34
Wheeler	0	0	0	0	0	0	0	0	0	0	0
Yamhill	2	0	0	2	0	1	3	0	1	1	10
Total	29	35	24	44	34	31	39	53	50	61	400

Oregon Hepatitis A (acute) Cases
January-July

	Age Group in Years												Total
	00-04	05-09	10-14	15-19	20-24	25-29	30-39	40-49	50-59	60-69	70-79	80+	
2004	3	6	3	1	1	4	6	5	6	2	2	4	43
2005	1	0	1	3	4	1	2	2	2	1	2	4	23
2006	2	2	1	2	3	0	2	4	3	5	2	0	26
2007	0	0	0	0	3	3	2	2	1	1	1	1	14
2008	3	0	0	1	4	2	4	6	2	0	0	1	23
2009	0	1	1	0	0	2	1	0	5	1	0	0	11
2010	0	0	0	0	1	0	2	2	2	2	2	1	12
2011	1	0	0	0	0	1	0	1	0	0	2	0	5
2012	0	0	0	0	0	0	0	1	0	0	0	0	1
2013	0	0	1	0	1	0	1	0	7	3	1	0	14
Total	10	9	7	7	17	13	20	23	28	15	12	11	172

	Sex			Total
	F	M	U	
2004	20	23	0	43
2005	11	12	0	23
2006	13	13	0	26
2007	7	7	0	14
2008	10	13	0	23
2009	3	8	0	11
2010	4	8	0	12
2011	4	1	0	5
2012	0	1	0	1
2013	10	4	0	14
Total	82	90	0	172

	Race					Total
	A	B	N	W	U	
2004	2	0	1	33	7	43
2005	0	0	0	21	2	23
2006	1	0	0	23	2	26
2007	1	0	0	11	2	14
2008	1	1	0	17	4	23
2009	0	0	0	10	1	11
2010	0	1	0	11	0	12
2011	1	1	0	3	0	5
2012	0	0	0	1	0	1
2013	0	0	0	13	1	14
Total	6	3	1	143	19	172

	2004	2005	2006	2007	2008	2009	2010	2011	2012	2013	Total
Baker	0	0	0	0	0	0	0	0	0	1	1
Benton	0	1	1	0	0	1	0	0	0	1	4
Clackamas	0	2	1	0	1	0	3	1	0	1	9
Clatsop	0	0	1	0	0	0	0	0	0	0	1
Columbia	0	0	0	0	1	0	0	0	0	0	1
Coos	3	0	0	0	0	0	0	0	0	0	3
Crook	1	0	0	0	0	0	0	0	0	0	1
Curry	0	0	0	0	0	0	0	0	0	0	0
Deschutes	1	0	1	1	1	0	2	0	0	1	7
Douglas	3	2	0	0	1	0	0	0	0	0	6
Gilliam	0	0	0	0	0	0	0	0	0	0	0
Grant	0	0	0	0	0	0	0	0	0	0	0
Harney	0	0	0	0	0	0	0	0	0	0	0
Hood River	1	0	1	0	2	0	0	2	0	0	6
Jackson	0	0	0	1	0	0	1	0	0	2	4
Jefferson	1	0	0	0	0	0	0	0	0	0	1
Josephine	0	1	0	1	1	0	0	0	0	0	3
Klamath	0	0	0	1	0	1	0	0	1	0	3
Lake	0	0	0	0	0	0	0	0	0	0	0
Lane	4	5	4	0	2	3	1	0	0	0	19
Lincoln	1	0	0	0	0	0	0	0	0	1	2
Linn	3	0	0	0	0	0	0	0	0	0	3
Malheur	1	0	0	1	0	0	0	0	0	0	2
Marion	10	0	3	0	1	1	1	0	0	2	18
Morrow	0	0	0	0	0	0	0	0	0	0	0
Multnomah	8	6	2	7	7	2	2	1	0	2	37
Out Of Sta	0	0	0	0	0	0	0	0	0	1	1
Polk	1	1	0	1	0	0	1	0	0	0	4
Sherman	0	0	0	0	0	0	0	0	0	0	0
Tillamook	0	0	6	0	0	0	0	0	0	0	6
Umatilla	1	1	0	0	0	0	0	0	0	0	2
Union	1	0	0	0	0	0	0	0	0	1	2
Wallowa	0	0	0	0	0	0	0	0	0	0	0
Wasco	0	0	0	0	0	0	0	0	0	0	0
Washington	3	2	6	1	5	3	1	1	0	1	23
Wheeler	0	0	0	0	0	0	0	0	0	0	0
Yamhill	0	2	0	0	1	0	0	0	0	0	3
Total	43	23	26	14	23	11	12	5	1	14	172

Oregon Hepatitis B (acute) Cases
January-July

	Age Group in Years												Total
	00-04	05-09	10-14	15-19	20-24	25-29	30-39	40-49	50-59	60-69	70-79	80+	
2004	0	0	0	0	6	7	20	23	8	4	1	0	69
2005	0	0	0	1	5	7	10	18	17	4	2	0	64
2006	0	0	0	0	5	4	10	15	5	3	0	0	42
2007	0	0	0	0	2	3	12	13	6	0	1	0	37
2008	1	0	0	0	1	2	7	12	6	3	0	0	32
2009	0	0	0	0	1	1	9	6	6	2	1	0	26
2010	0	0	0	0	1	1	7	10	9	3	0	0	31
2011	0	0	0	0	1	1	2	8	5	3	0	1	21
2012	0	0	0	0	0	0	1	7	5	2	2	0	17
2013	0	0	1	0	1	5	5	6	3	3	1	0	25
Total	1	0	1	1	23	31	83	118	70	27	8	1	364

	Sex			Total
	F	M	U	
2004	26	43	0	69
2005	27	37	0	64
2006	15	27	0	42
2007	14	23	0	37
2008	4	28	0	32
2009	9	17	0	26
2010	11	20	0	31
2011	4	17	0	21
2012	6	11	0	17
2013	7	18	0	25
Total	123	241	0	364

	Race					Total
	A	B	N	W	U	
2004	5	0	2	52	10	69
2005	4	2	2	47	9	64
2006	1	2	0	37	2	42
2007	0	0	0	31	6	37
2008	1	1	1	22	7	32
2009	0	0	0	26	0	26
2010	0	0	0	30	1	31
2011	1	1	0	18	1	21
2012	1	0	0	15	1	17
2013	3	1	1	15	5	25
Total	16	7	6	293	42	364

	2004	2005	2006	2007	2008	2009	2010	2011	2012	2013	Total
Baker	0	0	0	0	0	0	0	0	0	0	0
Benton	3	0	0	2	0	0	0	0	0	1	6
Clackamas	6	9	2	3	7	3	4	2	1	1	38
Clatsop	1	0	2	0	0	0	0	1	0	0	4
Columbia	1	1	1	2	0	0	0	0	1	1	7
Coos	2	1	0	0	0	0	1	0	0	1	5
Crook	0	0	0	0	0	0	1	0	0	0	1
Curry	0	1	0	0	0	0	0	0	0	0	1
Deschutes	1	2	3	0	0	3	1	1	0	0	11
Douglas	4	1	2	3	1	1	1	0	0	0	13
Gilliam	0	0	0	0	0	0	0	0	0	0	0
Grant	0	0	0	0	0	0	0	0	0	0	0
Harney	0	0	0	0	0	0	0	0	0	0	0
Hood River	0	1	0	0	0	0	0	0	0	0	1
Jackson	1	4	4	0	4	2	1	1	0	2	19
Jefferson	0	0	0	0	0	0	0	0	0	0	0
Josephine	1	4	4	1	1	0	0	0	0	1	12
Klamath	1	0	0	0	0	0	0	0	0	0	1
Lake	0	0	0	0	0	0	0	0	0	0	0
Lane	12	7	7	6	4	3	2	3	2	1	47
Lincoln	2	1	1	0	1	0	0	0	1	0	6
Linn	9	4	2	2	3	0	2	1	0	0	23
Malheur	1	1	0	0	0	0	0	0	0	0	2
Marion	6	6	2	3	1	3	4	1	1	2	29
Morrow	0	0	0	0	0	0	0	0	0	0	0
Multnomah	11	9	8	9	4	7	7	5	3	9	72
Polk	1	2	0	0	0	0	1	1	0	0	5
Sherman	0	0	0	0	0	0	0	0	0	0	0
Tillamook	0	0	0	0	0	0	1	0	0	0	1
Umatilla	0	1	0	0	0	0	0	0	1	0	2
Union	0	0	1	0	0	0	0	0	1	0	2
Wallowa	0	0	0	0	0	0	0	0	0	0	0
Wasco	0	0	0	0	0	0	2	1	0	0	3
Washington	5	6	3	4	6	4	3	4	5	4	44
Wheeler	0	0	0	0	0	0	0	0	0	0	0
Yamhill	1	3	0	2	0	0	0	0	1	2	9
Total	69	64	42	37	32	26	31	21	17	25	364

Oregon Hepatitis B (chronic) Cases
January-July

	Age Group in Years												Total
	00-04	05-09	10-14	15-19	20-24	25-29	30-39	40-49	50-59	60-69	70-79	80+	
2004	2	1	1	13	23	26	102	62	41	19	4	0	294
2005	1	2	2	10	21	25	62	50	35	9	7	5	229
2006	2	0	4	9	26	27	83	58	26	12	2	4	253
2007	5	3	1	12	25	29	72	59	41	24	7	1	279
2008	6	4	3	15	25	27	75	71	53	22	7	7	315
2009	3	0	1	6	20	23	69	56	46	26	6	3	259
2010	4	0	1	9	12	29	63	59	47	22	7	1	254
2011	1	3	2	3	21	25	58	62	55	21	8	2	261
2012	2	2	2	4	12	27	49	49	43	31	4	5	230
2013	0	0	0	6	25	24	64	54	42	26	13	4	258
Total	26	15	17	87	210	262	697	580	429	212	65	32	2632

	Sex				Total
	F	M	N	U	
2004	123	164	0	7	294
2005	99	127	0	4	230
2006	124	127	0	3	254
2007	128	149	0	2	279
2008	126	185	0	5	316
2009	107	149	0	4	260
2010	119	135	0	0	254
2011	110	150	0	1	261
2012	97	132	1	0	230
2013	114	144	0	0	258
Total	1147	1462	1	26	2636

	Race					Total
	A	B	N	W	U	
2004	109	17	4	104	60	294
2005	89	12	3	69	57	230
2006	118	15	5	75	41	254
2007	115	16	4	80	64	279
2008	136	17	7	92	64	316
2009	107	23	6	73	51	260
2010	101	17	8	54	74	254
2011	124	13	16	65	43	261
2012	96	12	10	57	55	230
2013	100	22	12	63	61	258
Total	1095	164	75	732	570	2636

	2004	2005	2006	2007	2008	2009	2010	2011	2012	2013	Total
Baker	0	0	0	0	1	1	0	0	0	0	2
Benton	5	3	3	3	10	3	2	1	6	6	42
Clackamas	24	17	15	18	25	23	21	24	15	23	205
Clatsop	1	3	3	4	1	0	0	1	1	5	19
Columbia	1	3	3	1	0	1	2	1	0	4	16
Coos	1	1	2	3	2	2	1	3	2	2	19
Crook	2	1	0	2	0	2	0	0	0	0	7
Curry	0	0	1	0	1	1	0	1	0	0	4
Deschutes	4	4	0	5	5	3	3	5	3	4	36
Douglas	7	2	2	0	6	5	5	4	1	3	35
Gilliam	0	0	0	0	0	0	0	0	1	0	1
Grant	0	0	0	1	0	0	0	0	0	0	1
Harney	0	0	0	1	0	0	1	0	0	0	2
Hood River	0	1	0	1	0	1	0	0	1	2	6
Jackson	11	6	6	5	11	4	7	5	4	3	62
Jefferson	1	1	0	0	1	0	1	0	0	2	6
Josephine	6	2	6	6	4	2	3	1	3	4	37
Klamath	0	1	1	3	3	1	5	4	1	3	22
Lake	0	0	0	0	0	0	0	1	0	0	1
Lane	20	13	16	23	12	13	8	12	10	18	145
Lincoln	2	3	0	2	1	5	3	3	2	1	22
Linn	4	5	5	3	5	4	4	0	3	3	36
Malheur	2	3	3	3	5	2	1	2	3	2	26
Marion	27	19	23	18	17	14	17	17	14	17	183
Morrow	1	0	0	1	0	2	0	0	1	0	5
Multnomah	104	72	109	111	125	115	114	131	96	106	1083
Polk	1	3	9	0	7	2	4	1	3	4	34
Sherman	0	0	0	0	0	0	0	0	0	0	0
Tillamook	0	1	0	1	2	0	0	1	2	0	7
Umatilla	6	0	1	3	5	3	1	3	3	2	27
Union	1	0	0	2	3	0	0	0	3	0	9
Wallowa	0	0	0	0	0	0	1	0	0	0	1
Wasco	0	3	0	1	2	1	1	0	1	1	10
Washington	59	57	45	55	57	49	48	37	49	43	499
Wheeler	0	0	0	0	0	0	0	0	0	0	0
Yamhill	4	6	1	3	5	1	1	3	2	0	26
Total	294	230	254	279	316	260	254	261	230	258	2636

Oregon Hepatitis C (acute) Cases
January-July

	Age Group in Years												Total
	00-04	05-09	10-14	15-19	20-24	25-29	30-39	40-49	50-59	60-69	70-79	80+	
2004	0	0	0	0	2	4	2	2	0	1	0	0	11
2005	0	0	0	2	0	5	1	2	3	0	0	0	13
2006	0	0	0	3	1	5	4	4	2	1	0	0	20
2007	0	0	0	0	1	2	1	7	3	0	0	0	14
2008	0	0	0	1	2	2	6	3	1	1	0	0	16
2009	0	0	0	2	1	3	8	1	1	0	0	0	16
2010	0	0	0	0	2	1	2	6	2	0	0	0	13
2011	0	0	0	2	3	4	2	4	1	0	0	0	16
2012	1	0	0	3	3	9	3	5	4	0	0	0	28
2013	0	0	0	1	1	1	5	0	2	0	0	0	10
Total	1	0	0	14	16	36	34	34	19	3	0	0	157

	Sex			Total
	F	M	U	
2004	7	4	0	11
2005	6	7	0	13
2006	14	6	0	20
2007	7	7	0	14
2008	8	8	0	16
2009	4	12	0	16
2010	9	4	0	13
2011	8	8	0	16
2012	11	17	0	28
2013	5	5	0	10
Total	79	78	0	157

	Race					Total
	A	B	N	W	U	
2004	1	0	1	7	2	11
2005	0	0	0	9	4	13
2006	0	0	0	11	9	20
2007	0	0	1	8	5	14
2008	0	0	0	11	5	16
2009	0	0	4	7	5	16
2010	0	0	0	11	2	13
2011	0	0	0	13	3	16
2012	0	0	1	24	3	28
2013	0	0	0	9	1	10
Total	1	0	7	110	39	157

	2004	2005	2006	2007	2008	2009	2010	2011	2012	2013	Total
Baker	0	1	0	0	0	0	0	0	0	0	1
Benton	1	0	0	0	0	0	0	1	2	0	4
Clackamas	0	1	2	2	2	3	1	0	1	4	16
Clatsop	1	0	1	0	0	1	0	0	0	0	3
Columbia	1	0	0	0	0	0	0	0	0	0	1
Coos	0	0	0	0	0	0	0	0	0	0	0
Crook	0	0	0	0	0	0	0	0	0	0	0
Curry	0	0	0	0	0	0	0	0	0	0	0
Deschutes	2	0	2	0	0	0	0	1	2	1	8
Douglas	1	0	2	1	0	0	4	0	3	0	11
Gilliam	0	0	0	0	0	0	0	0	0	0	0
Grant	0	0	0	0	0	0	0	0	0	0	0
Harney	0	0	0	0	0	0	0	0	1	0	1
Hood River	0	0	0	1	0	0	2	0	0	0	3
Jackson	1	4	0	0	1	1	0	0	0	1	8
Jefferson	0	0	0	1	0	1	0	0	0	0	2
Josephine	0	1	0	0	1	1	0	0	1	0	4
Klamath	0	0	0	0	0	4	0	1	1	0	6
Lake	0	0	0	0	0	0	0	0	0	0	0
Lane	0	0	1	1	3	4	4	4	3	2	22
Lincoln	0	0	0	0	1	0	0	0	0	1	2
Linn	0	0	0	0	1	0	0	1	0	0	2
Malheur	0	0	1	0	0	0	0	0	0	0	1
Marion	0	0	0	0	0	0	2	2	6	1	11
Morrow	0	0	0	0	0	0	0	0	0	0	0
Multnomah	3	5	7	6	1	0	0	3	7	0	32
Polk	1	1	2	0	1	0	0	1	0	0	6
Sherman	0	0	0	0	0	0	0	0	0	0	0
Tillamook	0	0	0	0	0	0	0	0	0	0	0
Umatilla	0	0	2	1	1	1	0	1	0	0	6
Union	0	0	0	0	0	0	0	0	0	0	0
Wallowa	0	0	0	0	0	0	0	0	0	0	0
Wasco	0	0	0	1	0	0	0	0	0	0	1
Washington	0	0	0	0	1	0	0	1	1	0	3
Wheeler	0	0	0	0	0	0	0	0	0	0	0
Yamhill	0	0	0	0	3	0	0	0	0	0	3
Total	11	13	20	14	16	16	13	16	28	10	157

Oregon Hepatitis C (chronic) Cases
January-July

	Age Group in Years												Total
	00-04	05-09	10-14	15-19	20-24	25-29	30-39	40-49	50-59	60-69	70-79	80+	
2004	0	0	0	0	4	6	20	58	62	14	0	0	164
2005	0	0	2	6	18	18	78	190	254	44	8	4	622
2006	28	2	2	32	124	268	968	2244	2222	350	126	48	6414
2007	36	2	10	58	170	306	1268	2644	2984	534	124	38	8174
2008	28	14	10	38	168	362	1052	2478	3026	610	136	42	7964
2009	10	2	10	64	196	330	972	2238	2964	766	142	62	7756
2010	4	2	12	46	156	250	746	1762	2520	744	96	24	6362
2011	0	0	2	60	164	248	746	1754	2532	972	106	36	6620
2012	0	3	1	22	113	144	375	660	1032	450	46	13	2859
2013	5	2	2	30	114	128	304	460	777	390	47	8	2267
Total	111	27	51	356	1227	2060	6529	14488	18373	4874	831	275	49202

	2004	2005	2006	2007	2008	2009	2010	2011	2012	2013	Total
Baker	0	0	26	32	32	36	18	12	13	14	183
Benton	2	2	74	70	88	98	66	72	26	22	520
Clackamas	34	84	546	514	524	446	290	338	160	198	3134
Clatsop	2	20	138	92	82	80	70	84	33	26	627
Columbia	0	0	44	120	76	80	76	84	36	26	542
Coos	0	6	188	150	212	214	172	146	83	27	1198
Crook	0	26	4	10	10	14	24	16	16	6	126
Curry	0	0	32	58	66	70	66	52	22	13	379
Deschutes	0	8	222	192	260	236	178	250	119	97	1562
Douglas	58	36	336	292	314	230	240	300	81	81	1968
Gilliam	0	0	0	4	4	0	4	4	1	0	17
Grant	0	0	0	4	8	10	6	10	0	3	41
Harney	0	0	4	8	2	8	12	16	5	6	61
Hood River	4	2	8	14	16	16	8	8	11	2	89
Jackson	12	58	454	432	544	480	318	428	149	126	3001
Jefferson	2	0	32	10	52	62	50	62	39	52	361
Josephine	0	4	234	234	200	244	186	200	57	57	1416
Klamath	0	0	146	142	208	194	140	134	42	47	1053
Lake	0	0	32	26	20	22	14	16	4	11	145
Lane	2	26	428	478	766	818	712	638	286	258	4412
Lincoln	2	4	132	126	140	116	80	116	56	46	818
Linn	0	4	204	226	248	320	244	236	102	90	1674
Malheur	0	12	150	184	136	156	124	100	40	32	934
Marion	2	66	760	836	692	670	658	606	254	205	4749
Morrow	0	0	14	12	10	0	2	18	4	0	60
Multnomah	42	226	1138	2548	2016	1942	1640	1724	813	426	12515
Out Of Sta	0	0	0	0	0	0	0	0	0	4	4
Polk	0	2	82	86	104	100	82	92	30	36	614
Sherman	0	0	4	0	2	2	2	0	3	0	13
State Of O	0	0	0	0	0	0	0	0	2	0	2
Tillamook	2	4	50	34	56	40	40	58	14	12	310
Umatilla	2	16	176	228	180	246	208	108	68	41	1273
Union	0	2	14	16	16	40	30	52	9	9	188
Wallowa	0	0	2	2	8	4	8	10	0	3	37
Wasco	0	0	48	88	42	38	36	36	21	13	322
Washington	0	10	656	764	742	640	466	470	182	223	4153
Wheeler	0	0	2	0	6	6	0	0	2	0	16

(Continued)

	Sex					Total
	F	M	N	U		
2004	0	70	90	0	6	166
2005	0	252	366	0	4	622
2006	0	2374	3946	0	194	6514
2007	2	3108	5002	0	122	8234
2008	0	3270	4562	0	166	7998
2009	0	3014	4658	0	122	7794
2010	0	2422	3936	0	18	6376
2011	0	2482	4144	0	0	6626
2012	0	1024	1835	0	2	2861
2013	0	917	1352	1	5	2275
Total	2	18933	29891	1	639	49466

	Race					Total
	A	B	N	W	U	
2004	0	0	2	56	108	166
2005	4	18	2	144	454	622
2006	28	42	60	1380	5004	6514
2007	24	78	64	1716	6352	8234
2008	20	100	48	2204	5626	7998
2009	30	76	58	1770	5860	7794
2010	34	144	90	2180	3928	6376
2011	64	120	84	2930	3428	6626
2012	31	62	43	1248	1477	2861
2013	12	18	25	847	1373	2275
Total	247	658	476	14475	33610	49466

Oregon HUS Cases
January-July

	Age Group in Years												Total
	00-04	05-09	10-14	15-19	20-24	25-29	30-39	40-49	50-59	60-69	70-79	80+	
2004	2	2	0	0	0	0	0	0	0	0	0	0	4
2005	3	0	0	0	0	0	0	0	0	0	0	0	3
2006	1	0	1	1	0	0	0	0	0	0	0	0	3
2007	5	0	0	1	0	0	0	0	0	0	0	0	6
2008	2	1	0	1	0	0	0	0	0	0	0	0	4
2009	0	0	1	0	0	0	0	0	1	0	1	0	3
2010	4	0	2	0	0	0	0	0	0	0	0	0	6
2011	2	0	1	0	0	0	0	0	0	1	1	0	5
2012	4	0	4	0	0	0	0	0	1	0	0	0	9
2013	2	2	0	2	1	0	0	1	0	1	0	0	9
Total	25	5	9	5	1	0	0	1	2	2	2	0	52

	Sex			Total
	F	M	U	
2004	3	1	0	4
2005	3	0	0	3
2006	1	2	0	3
2007	3	3	0	6
2008	2	3	0	5
2009	3	0	0	3
2010	2	4	0	6
2011	3	2	0	5
2012	7	2	0	9
2013	6	3	0	9
Total	33	20	0	53

	Race					Total
	A	B	N	W	U	
2004	0	1	0	2	1	4
2005	0	0	0	3	0	3
2006	0	0	0	3	0	3
2007	0	0	0	5	1	6
2008	0	1	0	4	0	5
2009	0	0	0	2	1	3
2010	0	0	0	6	0	6
2011	0	0	0	5	0	5
2012	0	0	0	7	2	9
2013	0	0	0	9	0	9
Total	0	2	0	46	5	53

	2004	2005	2006	2007	2008	2009	2010	2011	2012	2013	Total
Baker	0	0	1	0	0	0	0	0	0	0	1
Benton	0	0	0	0	0	0	0	0	0	0	0
Clackamas	1	0	1	0	0	0	0	0	1	2	5
Clatsop	0	0	0	0	0	0	0	0	0	0	0
Columbia	0	0	0	0	0	0	0	0	0	0	0
Coos	0	0	0	1	0	1	0	0	0	0	2
Crook	1	0	0	0	0	0	0	0	1	0	2
Curry	0	0	0	0	0	0	0	0	0	0	0
Deschutes	0	0	0	0	0	0	0	0	0	0	0
Douglas	0	0	0	0	0	0	1	1	1	0	3
Gilliam	0	0	0	0	0	0	0	0	0	0	0
Grant	0	0	0	0	0	0	0	0	0	0	0
Harney	0	0	0	0	0	0	0	0	0	0	0
Hood River	0	0	0	0	0	0	0	1	0	0	1
Jackson	0	0	0	1	0	0	0	0	0	2	3
Jefferson	0	0	0	0	0	0	0	0	0	0	0
Josephine	0	0	0	0	0	0	0	0	0	0	0
Klamath	0	1	0	0	0	0	0	0	1	1	3
Lake	0	0	0	0	0	0	0	0	0	0	0
Lane	0	0	0	0	1	0	0	0	0	0	1
Lincoln	0	0	0	0	0	1	0	0	0	0	1
Linn	0	1	0	0	0	0	1	1	0	1	4
Malheur	0	0	0	0	0	0	0	0	0	0	0
Marion	0	1	0	1	1	0	0	0	2	2	7
Morrow	0	0	0	1	0	0	0	0	0	0	1
Multnomah	1	0	0	0	1	1	2	0	1	1	7
Polk	0	0	0	0	0	0	0	0	0	0	0
Sherman	0	0	0	1	0	0	0	0	0	0	1
Tillamook	0	0	0	0	0	0	0	0	0	0	0
Umatilla	0	0	0	0	1	0	0	0	0	0	1
Union	1	0	0	0	0	0	0	0	0	0	1
Wallowa	0	0	0	0	0	0	0	0	0	0	0
Wasco	0	0	0	0	0	0	1	0	0	0	1
Washington	0	0	1	1	1	0	1	2	2	0	8
Wheeler	0	0	0	0	0	0	0	0	0	0	0
Yamhill	0	0	0	0	0	0	0	0	0	0	0
Total	4	3	3	6	5	3	6	5	9	9	53

Oregon Legionellosis Cases
January-July

	Age Group in Years												Total
	00-04	05-09	10-14	15-19	20-24	25-29	30-39	40-49	50-59	60-69	70-79	80+	
2004	0	0	0	0	0	0	0	0	1	3	0	0	4
2005	0	0	0	0	0	0	1	1	2	1	1	0	6
2006	0	0	0	0	2	1	2	2	4	3	1	1	16
2007	0	0	0	0	0	0	1	0	1	1	2	0	5
2008	0	0	0	0	0	0	0	5	2	2	1	2	12
2009	0	0	0	0	0	0	1	0	3	3	0	0	7
2010	1	0	0	0	0	0	2	1	2	3	0	0	9
2011	0	0	0	0	0	0	0	2	1	3	0	1	7
2012	0	0	0	0	0	0	1	1	3	4	9	2	20
2013	0	0	0	0	0	0	0	4	5	5	2	0	16
Total	1	0	0	0	2	1	8	16	24	28	16	6	102

	Sex			Total
	F	M	U	
2004	0	4	0	4
2005	2	4	0	6
2006	6	10	0	16
2007	0	5	0	5
2008	3	9	0	12
2009	3	4	0	7
2010	5	4	0	9
2011	4	3	0	7
2012	6	14	0	20
2013	8	8	0	16
Total	37	65	0	102

	Race					Total
	A	B	N	W	U	
2004	0	0	0	4	0	4
2005	0	0	1	4	1	6
2006	0	1	0	13	2	16
2007	0	0	0	3	2	5
2008	0	1	0	9	2	12
2009	0	0	0	6	1	7
2010	0	0	0	9	0	9
2011	0	0	0	6	1	7
2012	0	0	0	16	4	20
2013	0	0	0	14	2	16
Total	0	2	1	84	15	102

	2004	2005	2006	2007	2008	2009	2010	2011	2012	2013	Total
Baker	0	0	0	0	0	0	0	0	0	0	0
Benton	0	0	0	0	0	0	0	0	0	0	0
Clackamas	0	2	4	2	0	2	1	0	3	2	16
Clatsop	0	0	0	0	1	0	0	0	0	0	1
Columbia	1	0	0	0	0	0	0	0	1	0	2
Coos	0	0	0	0	0	0	0	0	0	0	0
Crook	0	0	0	0	0	0	0	0	0	0	0
Curry	0	0	0	0	0	0	0	0	0	0	0
Deschutes	0	0	1	0	0	0	1	0	1	0	3
Douglas	0	0	1	0	0	0	0	0	0	0	1
Gilliam	0	0	0	0	0	0	0	0	0	0	0
Grant	0	0	0	0	0	0	0	0	0	0	0
Harney	0	0	0	0	0	0	0	0	0	0	0
Hood River	0	0	0	0	0	0	0	0	0	0	0
Jackson	0	0	0	0	0	1	1	0	1	1	4
Jefferson	0	0	0	0	0	0	0	0	0	0	0
Josephine	0	0	0	0	0	0	0	0	1	0	1
Klamath	0	0	0	0	0	0	0	0	0	0	0
Lake	0	0	0	0	0	0	0	0	0	0	0
Lane	0	0	3	0	2	0	2	2	3	4	16
Lincoln	0	0	0	0	0	0	0	1	1	0	2
Linn	0	0	0	0	0	0	0	0	0	1	1
Malheur	0	0	0	0	0	0	1	0	0	0	1
Marion	0	0	0	1	0	0	0	0	0	0	1
Morrow	0	0	0	0	0	0	0	0	0	0	0
Multnomah	2	2	6	2	5	2	2	2	4	6	33
Polk	0	0	0	0	0	0	0	0	1	0	1
Sherman	0	0	0	0	0	0	0	0	0	0	0
Tillamook	0	0	0	0	0	0	0	0	0	0	0
Umatilla	0	0	0	0	0	0	0	0	0	0	0
Union	0	0	0	0	0	0	0	0	0	0	0
Wallowa	0	0	0	0	1	0	0	0	1	0	2
Wasco	0	0	0	0	1	0	1	0	1	0	3
Washington	1	2	1	0	2	2	0	2	2	2	14
Wheeler	0	0	0	0	0	0	0	0	0	0	0
Yamhill	0	0	0	0	0	0	0	0	0	0	0
Total	4	6	16	5	12	7	9	7	20	16	102

Oregon Listeriosis Cases
January-July

	Age Group in Years												Total
	00-04	05-09	10-14	15-19	20-24	25-29	30-39	40-49	50-59	60-69	70-79	80+	
2004	2	0	0	0	0	0	1	0	0	0	2	0	5
2005	1	0	0	0	0	0	0	1	0	0	1	2	5
2006	0	0	0	0	0	0	0	0	4	0	1	2	7
2007	0	0	0	0	0	0	0	0	0	0	2	1	3
2008	0	0	0	0	0	0	1	0	0	0	0	1	2
2009	2	0	0	2	0	0	0	0	0	1	6	1	12
2010	2	1	0	0	1	1	1	0	0	1	0	1	8
2011	0	0	0	0	0	0	0	0	0	1	1	1	3
2012	0	0	0	1	1	0	1	1	4	1	2	2	13
2013	1	0	0	0	0	0	0	0	0	0	0	1	2
Total	8	1	0	3	2	1	4	2	8	4	15	12	60

	Sex			Total
	F	M	U	
2004	2	3	0	5
2005	4	1	0	5
2006	3	4	0	7
2007	2	1	0	3
2008	2	0	0	2
2009	8	4	0	12
2010	7	1	0	8
2011	2	1	0	3
2012	7	6	0	13
2013	2	0	0	2
Total	39	21	0	60

	Race					Total
	A	B	N	W	U	
2004	0	0	0	5	0	5
2005	0	0	0	5	0	5
2006	0	0	0	7	0	7
2007	0	0	0	2	1	3
2008	0	0	0	2	0	2
2009	0	0	0	9	3	12
2010	0	0	0	8	0	8
2011	0	0	0	3	0	3
2012	0	1	1	11	0	13
2013	0	0	0	1	1	2
Total	0	1	1	53	5	60

	2004	2005	2006	2007	2008	2009	2010	2011	2012	2013	Total
Baker	0	0	0	0	0	0	0	0	0	0	0
Benton	0	0	0	0	0	0	0	0	0	0	0
Clackamas	3	1	1	1	0	2	3	0	3	0	14
Clatsop	0	0	0	0	0	1	0	0	0	0	1
Columbia	0	0	0	0	0	0	0	0	1	0	1
Coos	0	1	0	0	0	0	0	0	0	0	1
Crook	0	0	0	0	0	0	0	0	0	0	0
Curry	0	0	0	0	0	0	0	0	0	0	0
Deschutes	0	0	0	0	0	0	0	0	1	0	1
Douglas	0	0	0	0	0	0	0	0	1	0	1
Gilliam	0	0	0	0	0	0	0	0	0	0	0
Grant	0	0	0	0	0	0	0	0	0	0	0
Harney	0	0	0	0	0	0	0	0	0	0	0
Hood River	0	0	0	0	0	0	0	0	0	0	0
Jackson	0	0	0	0	0	0	0	0	0	0	0
Jefferson	1	0	0	0	0	0	0	0	0	0	1
Josephine	0	1	0	0	0	0	0	0	0	1	2
Klamath	0	0	0	0	0	0	0	0	0	0	0
Lake	0	0	0	0	0	0	0	0	0	0	0
Lane	0	0	0	0	0	0	0	1	2	0	3
Lincoln	0	0	0	0	0	2	0	1	0	0	3
Linn	0	0	0	0	0	0	0	0	0	0	0
Malheur	0	0	0	0	0	0	0	0	0	0	0
Marion	0	1	4	0	0	1	0	0	0	0	6
Morrow	0	0	0	0	0	0	0	0	0	0	0
Multnomah	1	0	1	0	0	6	2	0	2	0	12
Polk	0	0	0	0	0	0	0	0	0	0	0
Sherman	0	0	0	0	0	0	0	0	0	0	0
Tillamook	0	0	0	0	0	0	0	1	0	0	1
Umatilla	0	0	0	0	0	0	0	0	0	0	0
Union	0	0	0	0	0	0	0	0	1	0	1
Wallowa	0	0	0	0	0	0	0	0	0	0	0
Wasco	0	0	0	1	0	0	0	0	0	0	1
Washington	0	1	1	1	2	0	3	0	2	1	11
Wheeler	0	0	0	0	0	0	0	0	0	0	0
Yamhill	0	0	0	0	0	0	0	0	0	0	0
Total	5	5	7	3	2	12	8	3	13	2	60

Oregon Lyme disease Cases
January-July

	Age Group in Years												Total
	00-04	05-09	10-14	15-19	20-24	25-29	30-39	40-49	50-59	60-69	70-79	80+	
2004	0	2	3	0	2	1	2	4	2	3	0	0	19
2005	1	2	0	0	1	0	0	4	6	2	0	1	17
2006	0	0	0	0	0	1	1	2	1	3	0	1	9
2007	1	1	1	0	0	2	4	5	4	1	0	0	19
2008	0	1	1	2	0	1	1	4	6	3	1	0	20
2009	1	2	0	1	1	3	4	8	2	5	1	0	28
2010	1	2	1	0	1	5	5	5	5	3	3	0	31
2011	2	1	0	2	3	0	4	6	3	3	1	0	25
2012	1	2	0	3	0	1	7	7	4	6	1	0	32
2013	0	2	0	1	4	4	2	6	6	7	1	0	33
Total	7	15	6	9	12	18	30	51	39	36	8	2	233

	Sex			Total
	F	M	U	
2004	13	6	0	19
2005	11	6	0	17
2006	2	7	0	9
2007	14	5	0	19
2008	12	8	0	20
2009	20	8	0	28
2010	21	10	0	31
2011	12	13	0	25
2012	24	8	0	32
2013	23	10	0	33
Total	152	81	0	233

	Race					Total
	A	B	N	W	U	
2004	0	0	0	19	0	19
2005	0	0	0	16	1	17
2006	0	0	0	8	1	9
2007	0	1	0	14	4	19
2008	0	0	0	18	2	20
2009	1	0	0	22	5	28
2010	0	0	0	24	7	31
2011	0	0	1	17	7	25
2012	1	0	0	22	9	32
2013	1	0	1	27	4	33
Total	3	1	2	187	40	233

	2004	2005	2006	2007	2008	2009	2010	2011	2012	2013	Total
Baker	0	0	0	0	0	0	1	0	0	0	1
Benton	1	1	2	1	1	0	5	1	3	2	17
Clackamas	1	1	0	2	1	0	0	1	1	1	8
Clatsop	0	0	0	0	0	0	0	0	0	0	0
Columbia	0	0	1	0	0	0	1	0	0	0	2
Coos	0	0	0	1	0	0	2	0	1	0	4
Crook	0	0	0	0	0	0	0	0	0	0	0
Curry	0	0	0	0	0	1	0	0	0	0	1
Deschutes	0	1	0	0	1	1	0	0	0	4	7
Douglas	4	0	0	1	0	0	2	3	5	4	19
Gilliam	1	0	0	0	0	0	0	0	0	0	1
Grant	0	0	0	0	0	0	0	0	0	1	1
Harney	0	0	0	0	0	0	0	0	0	0	0
Hood River	0	2	0	3	0	2	1	0	1	0	9
Jackson	1	3	1	4	3	5	1	5	4	2	29
Jefferson	0	0	0	0	0	0	0	0	0	0	0
Josephine	5	3	0	2	3	2	1	3	8	5	32
Klamath	0	0	1	0	1	0	0	1	0	1	4
Lake	0	0	1	0	0	0	0	0	0	0	1
Lane	1	0	1	0	1	5	1	4	1	1	15
Lincoln	0	0	0	0	1	0	0	0	0	0	1
Linn	1	0	0	0	0	0	2	1	0	1	5
Malheur	0	0	0	1	0	0	0	0	0	0	1
Marion	1	0	0	1	1	0	1	0	0	0	4
Morrow	0	0	0	0	0	0	0	0	0	0	0
Multnomah	2	2	2	2	4	6	10	6	7	8	49
Polk	0	1	0	0	1	0	1	0	0	0	3
Sherman	0	0	0	0	0	0	0	0	0	0	0
Tillamook	0	1	0	1	0	0	0	0	0	1	3
Umatilla	0	0	0	0	0	1	0	0	0	0	1
Union	0	0	0	0	1	1	1	0	0	0	3
Wallowa	0	0	0	0	0	0	0	0	0	0	0
Wasco	0	0	0	0	1	0	0	0	0	1	2
Washington	1	1	0	0	0	2	1	0	1	0	6
Wheeler	0	0	0	0	0	0	0	0	0	1	1
Yamhill	0	1	0	0	0	2	0	0	0	0	3
Total	19	17	9	19	20	28	31	25	32	33	233

Oregon Malaria Cases
January-July

	Age Group in Years												Total
	00-04	05-09	10-14	15-19	20-24	25-29	30-39	40-49	50-59	60-69	70-79	80+	
2004	0	0	0	2	1	1	3	4	1	0	0	0	12
2005	0	0	0	0	2	0	1	2	1	1	0	0	7
2006	2	0	0	0	1	0	0	1	2	1	0	0	7
2007	0	2	0	0	1	3	1	2	0	2	0	0	11
2008	0	0	0	0	0	0	3	1	0	0	0	0	4
2009	0	0	0	1	0	1	3	1	1	1	0	0	8
2010	0	0	0	0	2	2	3	0	0	1	0	0	8
2011	0	0	0	3	1	1	1	1	2	0	0	0	9
2012	0	0	0	1	2	0	0	1	0	1	0	0	5
2013	0	0	0	1	1	0	1	2	0	0	0	0	5
Total	2	2	0	8	11	8	16	15	7	7	0	0	76

	Sex			Total
	F	M	U	
2004	7	4	1	12
2005	3	4	0	7
2006	2	5	0	7
2007	4	7	0	11
2008	1	3	0	4
2009	2	6	0	8
2010	2	6	0	8
2011	5	4	0	9
2012	2	3	0	5
2013	1	4	0	5
Total	29	46	1	76

	Race					Total
	A	B	N	W	U	
2004	0	4	0	6	2	12
2005	1	1	0	5	0	7
2006	1	2	0	2	2	7
2007	1	4	0	6	0	11
2008	0	2	0	2	0	4
2009	0	1	0	7	0	8
2010	0	2	0	5	1	8
2011	1	2	0	4	2	9
2012	0	1	0	4	0	5
2013	0	2	0	2	1	5
Total	4	21	0	43	8	76

	2004	2005	2006	2007	2008	2009	2010	2011	2012	2013	Total
Baker	0	0	0	0	0	0	0	0	0	0	0
Benton	0	0	1	1	0	0	0	1	0	0	3
Clackamas	0	0	1	0	0	1	0	0	0	2	4
Clatsop	0	0	0	0	0	0	0	0	0	0	0
Columbia	0	0	0	0	0	0	0	0	0	0	0
Coos	0	0	0	0	0	0	0	0	0	0	0
Crook	0	0	0	0	0	0	0	0	1	0	1
Curry	0	0	0	0	0	0	0	0	0	0	0
Deschutes	1	0	1	0	1	0	0	0	0	0	3
Douglas	0	1	0	0	0	0	0	0	0	0	1
Gilliam	0	0	0	0	0	0	0	0	0	0	0
Grant	0	0	0	0	0	0	0	0	0	0	0
Harney	0	0	0	0	0	0	0	0	0	0	0
Hood River	0	0	0	0	0	0	0	0	0	0	0
Jackson	0	0	0	0	0	0	0	0	0	0	0
Jefferson	0	0	0	0	0	0	0	0	0	0	0
Josephine	0	0	0	0	0	1	0	0	0	0	1
Klamath	0	0	0	0	0	0	0	0	0	0	0
Lake	0	0	0	0	0	0	0	0	0	0	0
Lane	1	0	0	0	0	1	0	1	0	0	3
Lincoln	0	0	0	0	0	0	0	0	0	0	0
Linn	0	1	0	0	0	0	0	1	0	0	2
Malheur	0	0	0	0	0	0	0	0	0	0	0
Marion	2	0	0	2	0	0	2	1	1	0	8
Morrow	0	0	0	0	0	0	0	0	0	0	0
Multnomah	3	3	1	7	3	4	2	5	2	3	33
Polk	0	1	0	0	0	0	0	0	0	0	1
Sherman	0	0	0	0	0	0	0	0	0	0	0
Tillamook	0	0	0	0	0	0	0	0	0	0	0
Umatilla	0	0	0	0	0	0	0	0	0	0	0
Union	0	0	0	0	0	0	0	0	0	0	0
Wallowa	0	0	0	0	0	0	0	0	0	0	0
Wasco	0	0	0	0	0	0	0	0	0	0	0
Washington	4	1	3	1	0	1	3	0	1	0	14
Wheeler	0	0	0	0	0	0	0	0	0	0	0
Yamhill	1	0	0	0	0	0	1	0	0	0	2
Total	12	7	7	11	4	8	8	9	5	5	76

Oregon Meningococcal Disease Cases
January-July

	Age Group in Years												Total
	00-04	05-09	10-14	15-19	20-24	25-29	30-39	40-49	50-59	60-69	70-79	80+	
2004	14	6	2	4	5	3	1	3	1	2	1	2	44
2005	8	1	1	9	7	0	1	2	3	0	1	1	34
2006	4	0	0	5	8	1	1	3	3	1	2	1	29
2007	7	2	1	2	0	3	0	0	1	1	1	6	24
2008	11	0	0	2	0	0	0	3	1	1	4	2	24
2009	9	2	1	2	2	0	3	3	0	1	0	3	26
2010	9	0	3	3	4	0	2	0	0	2	0	0	23
2011	8	1	1	1	3	0	1	1	1	2	2	2	23
2012	6	1	0	2	2	0	2	1	2	1	2	0	19
2013	1	0	0	1	1	1	0	1	1	1	1	1	9
Total	77	13	9	31	32	8	11	17	13	12	14	18	255

	Sex			Total
	F	M	U	
2004	19	25	0	44
2005	19	15	0	34
2006	16	13	0	29
2007	13	11	0	24
2008	15	8	1	24
2009	10	16	0	26
2010	5	18	0	23
2011	14	9	0	23
2012	9	10	0	19
2013	3	6	0	9
Total	123	131	1	255

	Race					Total
	A	B	N	W	U	
2004	0	1	1	38	4	44
2005	1	3	1	26	3	34
2006	0	0	0	26	3	29
2007	0	0	1	21	2	24
2008	0	1	0	22	1	24
2009	0	1	0	21	4	26
2010	0	2	2	17	2	23
2011	0	0	0	22	1	23
2012	0	1	0	15	3	19
2013	1	0	0	6	2	9
Total	2	9	5	214	25	255

	2004	2005	2006	2007	2008	2009	2010	2011	2012	2013	Total
Baker	0	0	0	0	0	0	0	0	0	0	0
Benton	2	1	1	0	0	0	1	0	0	0	5
Clackamas	3	2	0	0	1	3	0	0	1	2	12
Clatsop	0	0	1	0	2	0	0	1	1	0	5
Columbia	1	1	0	0	0	0	0	0	0	0	2
Coos	1	2	1	3	0	1	1	1	1	0	11
Crook	1	0	0	0	0	0	0	3	2	0	6
Curry	0	0	0	0	0	0	0	0	1	0	1
Deschutes	2	0	1	2	1	1	2	4	1	0	14
Douglas	6	3	5	0	2	0	7	1	1	0	25
Gilliam	0	0	0	0	0	0	0	0	0	0	0
Grant	0	0	0	0	0	0	0	0	0	0	0
Harney	0	0	0	0	0	0	0	0	0	0	0
Hood River	0	0	0	0	0	0	0	0	0	0	0
Jackson	3	5	2	1	1	1	2	2	0	0	17
Jefferson	0	1	0	0	0	0	0	0	0	0	1
Josephine	2	2	0	0	2	1	2	0	1	0	10
Klamath	2	2	1	0	1	0	0	0	0	0	6
Lake	0	0	0	0	0	0	0	0	0	0	0
Lane	4	4	0	3	1	4	2	2	5	1	26
Lincoln	1	0	0	2	4	0	0	0	0	0	7
Linn	1	0	1	2	0	0	0	0	0	1	5
Malheur	0	0	0	0	0	0	0	1	1	0	2
Marion	4	1	3	2	2	0	2	1	0	2	17
Morrow	1	0	0	0	0	0	0	0	0	0	1
Multnomah	5	5	5	4	4	7	2	5	2	1	40
Polk	1	1	2	0	0	0	1	0	0	0	5
Sherman	0	0	0	0	0	0	0	0	0	0	0
Tillamook	0	0	1	1	0	0	0	0	0	0	2
Umatilla	0	0	0	1	1	0	0	0	0	0	2
Union	0	0	0	0	0	0	0	0	0	0	0
Wallowa	0	0	0	0	0	0	0	0	0	0	0
Wasco	0	0	0	0	0	1	0	0	1	1	3
Washington	4	4	2	0	1	3	1	2	1	1	19
Wheeler	0	0	0	0	0	0	0	0	0	0	0
Yamhill	0	0	3	3	1	4	0	0	0	0	11
Total	44	34	29	24	24	26	23	23	19	9	255

Oregon Pertussis Cases
January-July

	Age Group in Years												Total
	00-04	05-09	10-14	15-19	20-24	25-29	30-39	40-49	50-59	60-69	70-79	80+	
2004	32	18	81	54	8	7	24	20	17	1	1	0	263
2005	132	64	136	65	20	8	38	38	15	9	1	2	528
2006	24	3	5	14	6	3	6	11	3	0	2	0	77
2007	21	8	8	4	2	8	6	1	2	1	0	0	61
2008	41	21	18	4	2	2	4	4	1	1	0	0	98
2009	61	19	27	17	3	5	6	7	4	3	4	0	156
2010	62	33	34	14	2	5	7	7	6	4	1	0	175
2011	61	48	40	6	0	2	4	6	6	2	2	1	178
2012	200	118	218	60	16	12	29	31	9	8	6	1	708
2013	100	53	83	33	5	1	10	18	4	4	1	2	314
Total	734	385	650	271	64	53	134	143	67	33	18	6	2558

	Sex			Total
	F	M	U	
2004	143	126	1	270
2005	278	259	3	540
2006	44	33	2	79
2007	36	24	1	61
2008	47	51	0	98
2009	85	68	3	156
2010	93	82	0	175
2011	88	90	0	178
2012	366	342	0	708
2013	175	139	0	314
Total	1355	1214	10	2579

	Race					Total
	A	B	N	W	U	
2004	2	1	0	216	51	270
2005	21	2	5	441	71	540
2006	4	0	3	63	9	79
2007	1	2	1	49	8	61
2008	0	0	0	91	7	98
2009	0	2	2	124	28	156
2010	2	1	1	156	15	175
2011	0	0	1	158	19	178
2012	12	12	4	614	66	708
2013	2	1	4	272	35	314
Total	44	21	21	2184	309	2579

	2004	2005	2006	2007	2008	2009	2010	2011	2012	2013	Total
Baker	0	0	0	0	0	0	0	0	0	0	0
Benton	141	45	0	1	0	10	1	5	10	4	217
Clackamas	5	31	1	0	2	20	2	23	68	18	170
Clatsop	0	9	0	0	9	1	0	8	17	2	46
Columbia	6	0	0	0	1	1	3	2	8	1	22
Coos	1	0	2	0	0	9	1	0	6	19	38
Crook	0	1	1	0	0	0	0	0	0	0	2
Curry	0	10	0	0	0	0	2	0	0	0	12
Deschutes	1	19	0	0	0	3	4	0	3	0	30
Douglas	20	0	0	0	0	19	2	2	0	3	46
Gilliam	0	0	5	0	0	0	0	0	0	0	5
Grant	0	0	0	0	0	0	0	0	0	0	0
Harney	0	0	0	8	0	0	0	0	1	0	9
Hood River	0	5	0	0	0	1	0	0	4	0	10
Jackson	2	16	8	0	7	5	32	2	3	17	92
Jefferson	0	0	0	0	0	0	0	0	0	1	1
Josephine	4	9	0	0	1	6	14	3	3	35	75
Klamath	2	4	9	0	2	0	0	1	0	32	50
Lake	0	1	0	0	0	0	0	0	0	0	1
Lane	38	111	11	1	14	15	35	37	20	72	354
Lincoln	0	26	0	5	0	0	7	0	6	0	44
Linn	15	19	1	13	1	12	3	0	13	11	88
Malheur	0	0	0	0	0	0	0	0	9	0	9
Marion	8	104	5	0	23	10	15	12	31	43	251
Morrow	0	0	4	0	0	0	0	0	1	0	5
Multnomah	8	63	15	16	22	27	37	67	199	37	491
Polk	4	14	0	1	2	1	3	4	22	5	56
Sherman	0	0	0	0	0	0	0	0	0	0	0
Tillamook	0	0	0	0	0	0	2	0	0	0	2
Umatilla	1	2	1	0	0	1	0	0	10	1	16
Union	0	1	0	0	0	4	0	0	1	2	8
Wallowa	0	1	0	0	1	0	0	0	0	0	2
Wasco	1	3	1	0	0	0	0	2	1	0	8
Washington	13	37	15	13	10	9	9	9	250	9	374
Wheeler	0	0	0	0	0	0	0	0	0	0	0
Yamhill	0	9	0	3	3	2	3	1	22	2	45
Total	270	540	79	61	98	156	175	178	708	314	2579

Oregon Salmonella Cases
January-July

	Age Group in Years												Total
	00-04	05-09	10-14	15-19	20-24	25-29	30-39	40-49	50-59	60-69	70-79	80+	
2004	30	21	13	20	20	19	28	32	26	11	14	16	250
2005	45	15	13	13	10	15	40	29	15	15	8	14	232
2006	40	12	13	10	20	22	27	28	26	18	10	5	231
2007	39	17	7	10	14	10	23	26	20	13	13	7	199
2008	47	21	11	14	17	15	26	26	25	24	9	7	242
2009	48	16	16	17	20	20	27	31	23	15	12	7	252
2010	48	22	19	12	24	26	39	44	48	27	16	12	337
2011	54	5	8	14	15	14	29	22	22	15	10	7	215
2012	34	11	6	10	19	14	35	23	21	22	10	9	214
2013	27	9	6	20	15	19	26	18	21	21	13	4	199
Total	412	149	112	140	174	174	300	279	247	181	115	88	2371

	Sex			Total
	F	M	U	
2004	137	115	0	252
2005	130	100	2	232
2006	131	100	0	231
2007	97	101	1	199
2008	127	115	0	242
2009	128	124	0	252
2010	182	155	0	337
2011	117	99	0	216
2012	118	96	0	214
2013	113	86	0	199
Total	1280	1091	3	2374

	Race					Total
	A	B	N	W	U	
2004	9	5	2	201	35	252
2005	12	2	4	184	30	232
2006	10	4	1	180	36	231
2007	3	3	1	172	20	199
2008	3	3	2	205	29	242
2009	14	7	4	195	32	252
2010	9	8	5	284	31	337
2011	7	3	3	180	23	216
2012	4	4	2	186	18	214
2013	5	4	0	169	21	199
Total	76	43	24	1956	275	2374

	2004	2005	2006	2007	2008	2009	2010	2011	2012	2013	Total
Baker	2	0	1	1	0	1	0	1	1	1	8
Benton	1	6	5	9	6	6	6	3	2	3	47
Clackamas	52	22	14	18	22	21	20	28	25	19	241
Clatsop	0	4	3	1	0	1	3	0	3	4	19
Columbia	2	2	2	0	1	1	0	2	1	2	13
Coos	4	4	2	5	6	4	4	2	3	4	38
Crook	4	2	2	1	1	0	0	3	1	6	20
Curry	0	0	1	0	1	3	2	0	0	1	8
Deschutes	5	9	9	10	7	6	12	11	6	14	89
Douglas	5	6	6	8	9	5	83	4	9	4	139
Gilliam	0	0	0	0	0	0	0	0	0	0	0
Grant	0	0	0	0	0	0	0	0	0	0	0
Harney	1	1	0	0	1	1	0	0	2	0	6
Hood River	0	0	1	1	0	1	3	2	1	2	11
Jackson	18	14	6	22	14	21	17	7	7	6	132
Jefferson	1	0	1	0	2	0	2	5	0	2	13
Josephine	3	4	4	3	6	4	8	1	4	2	39
Klamath	1	2	4	3	3	4	10	6	5	3	41
Lake	0	0	0	1	1	1	1	0	0	0	4
Lane	24	22	15	13	17	18	25	27	24	20	205
Lincoln	4	4	2	1	1	2	2	1	3	3	23
Linn	9	5	14	7	12	10	6	9	9	5	86
Malheur	2	0	1	4	4	0	3	0	3	3	20
Marion	18	21	26	16	19	25	28	18	19	10	200
Morrow	0	2	1	0	1	0	0	1	1	2	8
Multnomah	35	44	48	39	39	61	55	43	38	38	440
Polk	2	4	3	2	5	4	1	4	5	5	35
Sherman	0	0	0	0	0	0	1	0	0	1	2
Tillamook	1	0	1	0	0	0	3	0	2	1	8
Umatilla	6	8	5	3	7	5	3	3	3	5	48
Union	3	1	2	1	2	1	1	2	1	1	15
Wallowa	0	0	0	0	0	0	0	1	0	0	1
Wasco	0	3	5	3	2	4	3	1	2	2	25
Washington	38	35	35	25	47	36	31	27	27	21	322
Wheeler	0	0	0	0	0	0	0	0	0	0	0
Yamhill	11	7	12	2	6	6	4	4	7	9	68
Total	252	232	231	199	242	252	337	216	214	199	2374

Oregon Shigella Cases
January-July

	Age Group in Years												Total
	00-04	05-09	10-14	15-19	20-24	25-29	30-39	40-49	50-59	60-69	70-79	80+	
2004	7	5	1	2	1	2	7	8	0	2	2	0	37
2005	11	5	2	2	3	3	9	15	17	3	2	0	72
2006	7	5	3	3	3	5	9	13	12	9	5	2	76
2007	7	2	1	3	3	2	9	6	8	0	2	0	43
2008	7	5	2	1	2	4	7	3	2	4	1	0	38
2009	8	6	1	1	3	3	5	2	2	1	0	0	32
2010	3	8	0	0	0	4	4	4	5	4	0	0	32
2011	8	1	0	3	2	5	3	4	2	1	0	1	30
2012	4	6	1	3	1	3	8	5	5	5	1	1	43
2013	1	5	2	1	0	3	3	5	4	3	0	0	27
Total	63	48	13	19	18	34	64	65	57	32	13	4	430

	Sex			Total
	F	M	U	
2004	17	20	0	37
2005	38	34	0	72
2006	40	38	0	78
2007	22	21	0	43
2008	15	24	0	39
2009	15	17	0	32
2010	15	18	0	33
2011	20	10	0	30
2012	13	30	0	43
2013	10	17	0	27
Total	205	229	0	434

	Race					Total
	A	B	N	W	U	
2004	6	1	0	23	7	37
2005	0	1	0	47	24	72
2006	1	1	0	67	9	78
2007	2	2	0	33	6	43
2008	0	1	2	30	6	39
2009	4	0	1	24	3	32
2010	1	2	2	26	2	33
2011	1	1	1	22	5	30
2012	0	2	0	29	12	43
2013	0	1	0	23	3	27
Total	15	12	6	324	77	434

	2004	2005	2006	2007	2008	2009	2010	2011	2012	2013	Total
Baker	0	0	0	0	0	0	0	0	0	0	0
Benton	0	2	2	0	1	2	0	1	0	0	8
Clackamas	3	0	0	2	0	2	1	4	1	2	15
Clatsop	2	1	0	0	0	0	0	0	1	0	4
Columbia	4	0	0	0	0	0	0	0	0	0	4
Coos	0	0	1	0	0	0	0	0	0	0	1
Crook	0	0	0	0	0	0	0	0	0	0	0
Curry	0	0	0	0	0	0	0	0	0	0	0
Deschutes	2	0	0	2	1	4	1	0	0	0	10
Douglas	0	22	0	0	0	0	1	0	0	0	23
Gilliam	0	0	0	0	0	0	0	0	0	0	0
Grant	0	0	0	0	0	0	0	0	0	0	0
Harney	0	0	0	0	0	0	0	1	0	0	1
Hood River	1	0	2	1	1	4	1	0	0	0	10
Jackson	2	2	0	3	0	1	1	1	1	0	11
Jefferson	1	0	0	0	0	1	2	0	0	0	4
Josephine	0	0	2	0	1	0	0	0	0	0	3
Klamath	0	1	1	0	2	0	0	0	0	0	4
Lake	0	0	0	0	0	0	0	0	0	0	0
Lane	2	2	1	3	2	2	5	7	4	1	29
Lincoln	0	1	0	0	0	0	1	1	0	0	3
Linn	0	4	1	1	0	1	0	1	0	1	9
Malheur	0	1	1	0	0	0	0	0	0	0	2
Marion	1	13	11	1	5	8	8	2	5	6	60
Morrow	0	0	0	2	0	0	0	0	0	0	2
Multnomah	15	11	13	18	12	5	5	8	23	15	125
Polk	0	1	0	1	4	0	0	0	0	0	6
Sherman	0	0	0	0	0	0	0	0	0	0	0
Tillamook	0	0	0	0	0	0	0	0	0	0	0
Umatilla	0	1	0	0	3	0	0	0	0	0	4
Union	0	1	0	0	2	0	0	1	2	0	6
Wallowa	1	0	0	0	0	0	0	0	0	0	1
Warm Sprin	0	0	0	0	0	0	1	0	0	0	1
Wasco	0	1	2	0	0	0	0	0	0	0	3
Washington	2	8	7	8	5	2	5	3	6	2	48
Wheeler	0	0	0	0	0	0	0	0	0	0	0
Yamhill	1	0	34	1	0	0	1	0	0	0	37
Total	37	72	78	43	39	32	33	30	43	27	434

Oregon Vibrio parahaemolytic Cases
January-July

	Age Group in Years												Total
	00-04	05-09	10-14	15-19	20-24	25-29	30-39	40-49	50-59	60-69	70-79	80+	
2004	0	0	0	1	1	2	2	1	2	0	0	0	9
2005	0	0	0	0	0	0	1	0	0	1	1	1	4
2006	0	0	0	0	1	2	5	3	4	3	0	0	18
2007	0	0	0	0	0	1	0	0	0	0	0	0	1
2008	0	0	0	0	0	1	0	0	1	0	0	0	2
2009	0	0	0	1	0	0	1	1	2	0	0	0	5
2010	0	0	0	0	1	1	2	3	0	2	0	0	9
2011	0	0	0	0	0	0	0	1	0	1	0	0	2
2012	0	0	0	0	0	0	3	2	1	1	0	0	7
2013	0	0	0	0	0	4	1	1	3	3	0	0	12
Total	0	0	0	2	3	11	15	12	13	11	1	1	69

	Sex			Total
	F	M	U	
2004	1	8	0	9
2005	2	2	0	4
2006	7	11	0	18
2007	0	1	0	1
2008	0	2	0	2
2009	1	4	0	5
2010	2	7	0	9
2011	0	2	0	2
2012	1	6	0	7
2013	2	10	0	12
Total	16	53	0	69

	Race					Total
	A	B	N	W	U	
2004	0	1	0	8	0	9
2005	0	0	0	4	0	4
2006	0	0	0	15	3	18
2007	0	0	0	1	0	1
2008	1	0	0	0	1	2
2009	0	0	0	4	1	5
2010	1	0	0	7	1	9
2011	0	0	0	2	0	2
2012	0	1	0	6	0	7
2013	0	0	0	10	2	12
Total	2	2	0	57	8	69

	2004	2005	2006	2007	2008	2009	2010	2011	2012	2013	Total
Baker	0	0	0	0	0	0	0	0	0	0	0
Benton	0	0	1	0	1	0	0	0	0	3	5
Clackamas	0	0	2	0	0	2	1	1	0	1	7
Clatsop	0	0	0	0	1	0	0	1	0	0	2
Columbia	0	0	0	0	0	0	0	0	0	0	0
Coos	0	0	0	0	0	0	0	0	0	1	1
Crook	0	0	0	0	0	0	2	0	0	0	2
Curry	0	0	0	0	0	0	0	0	0	0	0
Deschutes	1	1	1	0	0	1	0	0	0	1	5
Douglas	0	0	0	0	0	0	0	0	0	1	1
Gilliam	0	0	0	0	0	0	0	0	0	0	0
Grant	0	0	0	0	0	0	0	0	0	0	0
Harney	0	0	0	0	0	0	0	0	0	0	0
Hood River	0	0	0	0	0	0	0	0	0	0	0
Jackson	0	0	1	0	0	0	0	0	0	0	1
Jefferson	0	0	0	0	0	0	0	0	0	0	0
Josephine	0	1	0	0	0	0	0	0	0	0	1
Klamath	3	0	0	0	0	0	0	0	0	0	3
Lake	0	0	0	0	0	0	0	0	0	0	0
Lane	1	1	7	0	0	0	0	0	0	2	11
Lincoln	0	0	0	0	0	0	0	0	0	0	0
Linn	0	0	1	0	0	0	1	0	0	1	3
Malheur	0	0	0	0	0	0	0	0	0	0	0
Marion	0	0	0	0	0	1	0	0	0	0	1
Morrow	0	0	0	0	0	0	0	0	0	0	0
Multnomah	4	0	4	1	0	1	3	0	6	2	21
Polk	0	0	0	0	0	0	0	0	0	0	0
Sherman	0	0	0	0	0	0	0	0	0	0	0
Tillamook	0	0	0	0	0	0	0	0	0	0	0
Umatilla	0	0	0	0	0	0	0	0	0	0	0
Union	0	0	0	0	0	0	0	0	0	0	0
Wallowa	0	0	0	0	0	0	0	0	0	0	0
Wasco	0	0	0	0	0	0	0	0	0	0	0
Washington	0	1	1	0	0	0	1	0	1	0	4
Wheeler	0	0	0	0	0	0	0	0	0	0	0
Yamhill	0	0	0	0	0	0	1	0	0	0	1
Total	9	4	18	1	2	5	9	2	7	12	69

Oregon West Nile Cases
January-July

	Age Group in Years												Total
	00-04	05-09	10-14	15-19	20-24	25-29	30-39	40-49	50-59	60-69	70-79	80+	
2004	0	0	0	0	0	0	0	0	0	0	0	0	0
2005	0	0	0	0	0	0	1	2	0	0	0	0	3
2006	0	0	0	2	0	0	3	3	3	3	0	0	14
2007	0	0	0	1	1	1	0	1	2	1	1	0	8
2008	0	0	0	1	0	0	0	1	0	1	1	0	4
2009	0	0	0	1	0	0	0	0	0	0	0	0	1
2010	0	0	0	0	0	0	0	0	0	0	0	0	0
2011	0	0	0	0	0	0	0	0	0	0	0	0	0
2012	0	0	0	0	0	0	0	1	0	0	0	1	2
2013	0	0	0	0	0	0	0	1	0	0	0	0	1
Total	0	0	0	5	1	1	4	9	5	5	2	1	33

	Sex			Total
	F	M	U	
2004	0	0	0	0
2005	2	1	0	3
2006	8	6	0	14
2007	4	4	0	8
2008	2	2	0	4
2009	0	1	0	1
2010	0	0	0	0
2011	0	0	0	0
2012	0	2	0	2
2013	1	0	0	1
Total	17	16	0	33

	Race					Total
	A	B	N	W	U	
2004	0	0	0	0	0	0
2005	0	0	0	2	1	3
2006	0	0	0	14	0	14
2007	0	0	0	8	0	8
2008	0	0	0	4	0	4
2009	0	0	0	0	1	1
2010	0	0	0	0	0	0
2011	0	0	0	0	0	0
2012	0	0	0	1	1	2
2013	0	0	0	1	0	1
Total	0	0	0	30	3	33

	2004	2005	2006	2007	2008	2009	2010	2011	2012	2013	Total
Baker	0	0	0	0	0	0	0	0	0	0	0
Benton	0	1	0	0	0	0	0	0	0	0	1
Clackamas	0	0	0	0	0	0	0	0	0	0	0
Clatsop	0	0	0	0	0	0	0	0	0	0	0
Columbia	0	0	0	0	0	0	0	0	0	0	0
Coos	0	0	0	0	0	0	0	0	1	0	1
Crook	0	0	0	0	0	0	0	0	0	0	0
Curry	0	0	0	0	0	0	0	0	0	0	0
Deschutes	0	0	0	0	0	0	0	0	0	0	0
Douglas	0	0	1	0	0	0	0	0	0	0	1
Gilliam	0	0	0	0	0	0	0	0	0	0	0
Grant	0	0	0	0	0	0	0	0	0	0	0
Harney	0	0	1	0	0	0	0	0	0	0	1
Hood River	0	0	0	0	0	0	0	0	0	0	0
Jackson	0	0	0	0	0	0	0	0	0	0	0
Jefferson	0	0	0	0	0	0	0	0	0	0	0
Josephine	0	0	0	0	0	0	0	0	0	0	0
Klamath	0	0	0	0	0	0	0	0	0	0	0
Lake	0	0	0	0	0	0	0	0	0	0	0
Lane	0	0	0	0	0	0	0	0	1	0	1
Lincoln	0	0	0	0	0	0	0	0	0	0	0
Linn	0	0	0	0	0	0	0	0	0	0	0
Malheur	0	1	12	5	4	0	0	0	0	1	23
Marion	0	1	0	0	0	0	0	0	0	0	1
Morrow	0	0	0	0	0	0	0	0	0	0	0
Multnomah	0	0	0	0	0	1	0	0	0	0	1
Polk	0	0	0	1	0	0	0	0	0	0	1
Sherman	0	0	0	0	0	0	0	0	0	0	0
Tillamook	0	0	0	0	0	0	0	0	0	0	0
Umatilla	0	0	0	0	0	0	0	0	0	0	0
Union	0	0	0	2	0	0	0	0	0	0	2
Wallowa	0	0	0	0	0	0	0	0	0	0	0
Wasco	0	0	0	0	0	0	0	0	0	0	0
Washington	0	0	0	0	0	0	0	0	0	0	0
Wheeler	0	0	0	0	0	0	0	0	0	0	0
Yamhill	0	0	0	0	0	0	0	0	0	0	0
Total	0	3	14	8	4	1	0	0	2	1	33

Oregon Yersinia Cases
January-July

	Age Group in Years												Total
	00-04	05-09	10-14	15-19	20-24	25-29	30-39	40-49	50-59	60-69	70-79	80+	
2004	1	0	0	0	3	0	1	0	3	0	0	0	8
2005	0	1	0	0	0	0	2	5	1	2	0	0	11
2006	4	3	0	0	0	2	0	1	0	3	0	0	13
2007	6	0	0	1	0	0	0	0	2	0	2	2	13
2008	5	0	1	1	0	0	1	2	0	1	0	0	11
2009	1	1	1	0	1	1	1	3	1	1	0	0	11
2010	2	3	0	0	0	1	1	1	2	3	1	0	14
2011	2	0	0	1	0	1	0	2	4	3	1	0	14
2012	4	0	1	0	2	0	1	1	3	1	3	0	16
2013	0	4	0	2	3	2	1	3	0	3	0	1	19
Total	25	12	3	5	9	7	8	18	16	17	7	3	130

	Sex			Total
	F	M	U	
2004	7	1	0	8
2005	7	4	0	11
2006	4	9	0	13
2007	3	10	0	13
2008	4	7	0	11
2009	7	4	0	11
2010	8	6	0	14
2011	6	8	0	14
2012	4	12	0	16
2013	11	8	0	19
Total	61	69	0	130

	Race					Total
	A	B	N	W	U	
2004	1	0	0	7	0	8
2005	2	0	0	9	0	11
2006	1	0	0	12	0	13
2007	1	0	0	10	2	13
2008	2	0	0	8	1	11
2009	2	0	0	9	0	11
2010	1	0	0	9	4	14
2011	0	1	0	13	0	14
2012	0	0	0	13	3	16
2013	2	0	0	16	1	19
Total	12	1	0	106	11	130

	2004	2005	2006	2007	2008	2009	2010	2011	2012	2013	Total
Baker	0	0	0	0	0	0	0	0	0	1	1
Benton	0	0	0	0	0	0	0	0	0	0	0
Clackamas	1	0	1	4	7	3	3	1	2	1	23
Clatsop	0	0	0	0	0	0	1	0	0	0	1
Columbia	0	0	0	0	0	0	0	0	0	0	0
Coos	0	0	0	1	0	0	0	0	1	1	3
Crook	0	0	0	0	0	0	1	0	0	0	1
Curry	0	0	0	0	1	1	0	0	0	1	3
Deschutes	0	0	2	0	0	1	0	1	0	0	4
Douglas	0	0	0	0	0	0	0	0	0	0	0
Gilliam	0	0	0	0	0	0	0	0	0	0	0
Grant	0	0	0	0	0	0	0	0	0	0	0
Harney	0	0	0	0	0	0	0	0	0	0	0
Hood River	0	0	0	0	0	0	0	0	0	0	0
Jackson	1	0	0	0	0	0	1	0	2	1	5
Jefferson	0	0	0	0	0	0	0	0	0	0	0
Josephine	0	0	0	0	0	0	0	0	1	0	1
Klamath	0	0	2	0	0	0	0	0	0	0	2
Lake	0	0	0	0	0	0	0	0	0	0	0
Lane	2	1	1	4	0	2	0	1	0	4	15
Lincoln	0	0	0	0	0	0	0	0	0	0	0
Linn	0	0	1	0	0	0	0	1	0	1	3
Malheur	0	0	0	0	0	0	1	0	0	0	1
Marion	0	0	1	0	0	0	0	1	2	1	5
Morrow	0	0	0	0	0	0	0	0	0	0	0
Multnomah	4	6	3	2	2	1	1	3	5	5	32
Polk	0	0	0	0	0	0	0	0	0	0	0
Sherman	0	1	0	0	0	0	0	0	0	0	1
Tillamook	0	0	0	0	0	0	0	0	0	0	0
Umatilla	0	1	1	1	0	1	1	5	0	0	10
Union	0	0	1	0	0	0	0	0	0	0	1
Wallowa	0	0	0	0	0	0	0	0	0	0	0
Wasco	0	0	0	0	0	0	0	0	0	0	0
Washington	0	1	0	1	1	2	4	1	3	3	16
Wheeler	0	0	0	0	0	0	0	0	0	0	0
Yamhill	0	1	0	0	0	0	1	0	0	0	2
Total	8	11	13	13	11	11	14	14	16	19	130