

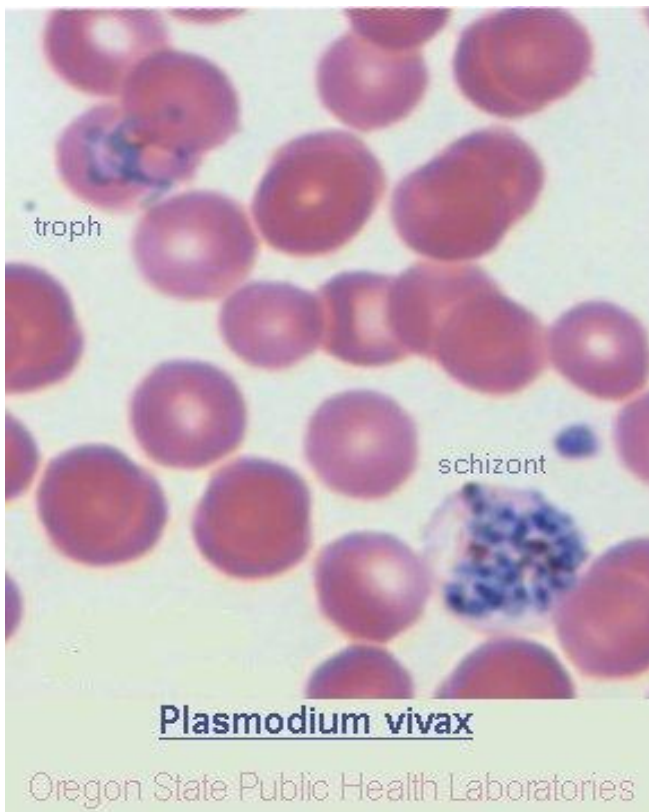
Oregon Health Authority

Public Health Division
Center for Public Health Practice

September 2013

MEMENTO MORBI

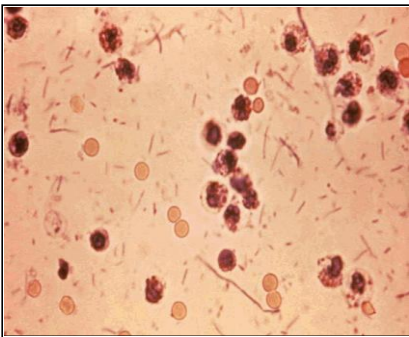
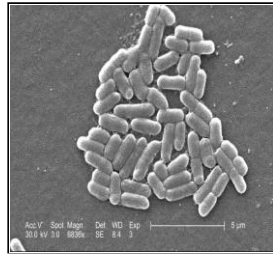
A Monthly Communicable Disease Surveillance Report



Oregon
Health
Authority

Table of Contents

About Memento Morbi	3
Notifiable Diseases by Month	4
Notifiable Diseases by County	6
Notifiable Diseases of Low Incidence	9
Sexually Transmitted Diseases: Chlamydia, gonorrhea, HIV, syphilis	10
Notifiable Diseases by Age, Sex, Race and County	11



About *Memento Morbi*

This monthly report contains an early source of infectious disease surveillance data for Oregon. These data are important for monitoring early trends of notifiable infectious diseases and for targeting prevention and control efforts. The purpose of this document is to summarize important information data users should know about the report to facilitate proper analysis and interpretation.

1. This report comprises compilations of data received by offices of the Oregon State Public Health Division (OSPHD).
2. The diseases reportable by law may increase or decrease over time.
3. The reporting status of diseases included may be determined by state law or be acquired through voluntary submissions.
4. Data are provisional and subject to change upon the completion of ongoing disease investigations.
5. *Memento Morbi* is prepared in the two weeks following the end of the calendar month; delayed case reports would be included in later issues. The same would apply to subsequent differences resulting from duplicates or erroneous data entries in individual reports.
6. Temporal distributions are generally based upon the date of onset or if unavailable, the next available date for epidemiologic purposes, including date of specimen collection, date reported to the local health department, or date reported to OSPHD. Exceptions include tuberculosis cases by date of report to CDC and HIV/AIDS reported by date of diagnosis, STDs by local health report date.
7. Starting in August of 2012, the STD data are now presented in more detail on the website

<http://public.health.oregon.gov/DISEASESCONDITIONS/COMMUNICABLEDISEASE/DISEASESURVEILLANCEDATA/STD/Pages/index.aspx#countyquarter>

and the HIV data at

<http://public.health.oregon.gov/DiseasesConditions/CommunicableDisease/DiseaseSurveillanceData/HIVData/Pages/epiprofile.aspx>

8. Data pertaining to race and ethnicity may be incomplete and may have been collected differently for the various notifiable diseases and across time.

In Summary

These data are subject to change, reflecting recent entry of information received from reporting sources.

Reported Cases of Selected Notifiable Diseases or Conditions in Oregon by Month
2013

	Jan	Feb	Mar	Apr	May	Jun	Jul	Aug	Sep	YTD
Botulism	1	0	0	0	0	2	0	0	0	3
Brucellosis	0	0	1	0	0	0	1	0	0	2
Campylobacter	46	41	56	54	62	108	129	97	67	660
Ciguatera	0	0	1	0	0	0	0	0	0	1
Cryptosporidiosis	10	4	7	10	10	10	107	47	13	218
Dengue Fever	0	1	0	0	0	0	2	2	0	5
E. coli(STEC)	3	2	14	7	7	14	28	40	36	151
Giardiasis	33	19	19	33	21	13	50	51	37	276
HUS	0	0	3	1	1	1	3	4	2	15
Haemophilus influenza	14	9	5	12	10	8	2	1	7	68
Hantavirus pulmonary	0	0	1	0	0	0	0	0	0	1
Hepatitis A (acute)	3	0	2	2	2	2	6	7	2	26
Hepatitis B (acute)	2	5	5	1	2	3	7	4	3	32
Hepatitis B (chronic)	43	28	23	43	46	33	43	31	25	315
Hepatitis C (acute)	0	1	3	2	0	2	2	1	1	12
Hepatitis C (chronic)	341	329	341	364	306	294	304	294	265	2838
Legionellosis	2	5	1	2	4	2	0	1	0	17
Leishmaniasis	0	0	0	0	1	0	0	0	0	1
Listeriosis	0	0	1	0	0	0	1	1	0	3
Lyme disease	1	3	5	6	1	9	10	7	3	45
Malaria	0	0	0	0	2	2	1	2	5	12
Measles	3	0	0	0	0	0	0	1	0	4
Meningococcal Disease	2	1	1	1	2	0	2	0	1	10
Mumps	0	1	0	1	0	1	0	0	0	3
Pertussis	36	27	28	39	51	56	92	71	29	429
Psittacosis	0	0	0	1	1	0	0	0	0	2
Q fever	1	0	0	0	0	0	0	0	0	1
Rocky Mtn Spotted fev	0	0	0	0	0	0	0	1	0	1
Rubella	0	0	0	0	0	0	1	0	0	1
Salmonella	12	15	32	39	22	33	50	67	46	316
Shigella	4	6	2	5	4	2	4	4	12	43
Tetanus	0	0	0	1	0	0	0	0	0	1
Tularemia	0	0	0	0	0	1	0	0	0	1
Typhus (murine)	0	0	0	0	1	0	0	1	0	2
Vibrio parahaemolytic	0	0	1	0	1	0	10	5	8	25
West Nile	0	0	0	0	0	0	3	10	2	15
Yersinia	4	3	1	8	1	0	2	1	3	23
YTD	561	500	553	632	558	596	860	751	567	5578

Reported Cases of Selected Notifiable Diseases or Conditions in Oregon by Month
2012

	Jan	Feb	Mar	Apr	May	Jun	Jul	Aug	Sep	YTD
Botulism	0	0	0	0	0	3	0	2	1	6
Campylobacter	63	45	55	69	63	105	117	120	92	729
Ciguatera	0	0	0	1	0	0	0	0	0	1
Colorado Tick Fever	0	0	0	0	1	0	0	0	0	1
Cryptosporidiosis	11	10	22	25	9	23	22	33	23	178
Cyclosporiasis	0	0	0	0	1	0	0	0	0	1
Dengue Fever	0	1	0	0	0	0	0	2	0	3
E. coli(STEC)	5	8	6	24	14	19	23	29	20	148
Giardiasis	23	30	36	30	24	22	34	44	41	284
HUS	0	0	0	5	1	1	2	1	3	13
Haemophilus influenza	10	5	8	10	5	4	8	2	4	56
Hantavirus pulmonary	0	0	0	0	1	0	1	0	0	2
Hepatitis A (acute)	1	0	0	0	0	0	0	1	0	2
Hepatitis B (acute)	4	2	2	3	0	1	5	2	2	21
Hepatitis B (chronic)	34	30	36	28	35	36	31	39	33	302
Hepatitis C (acute)	5	5	5	3	3	0	7	1	4	33
Hepatitis C (chronic)	406	438	417	433	420	366	384	369	385	3618
Legionellosis	4	2	3	2	4	3	2	6	2	28
Listeriosis	3	1	0	3	2	2	2	2	0	15
Lyme disease	1	4	9	2	2	4	10	4	4	40
Malaria	1	0	0	0	0	2	2	1	1	7
Measles	0	0	0	1	0	0	0	0	0	1
Meningococcal Disease	7	2	3	2	1	3	1	0	1	20
Mumps	1	0	0	0	0	0	0	0	1	2
Pertussis	27	40	59	132	160	150	140	77	47	832
Plague	0	0	0	0	0	2	0	0	0	2
Q fever	0	0	0	1	0	2	0	0	0	3
Relapsing Fever	0	0	0	1	0	1	0	1	0	3
Rocky Mtn Spotted fev	0	0	0	0	0	1	0	0	0	1
Salmonella	16	23	21	37	30	45	42	37	51	302
Shigella	4	5	8	6	1	8	11	22	4	69
Taeniasis	0	1	0	0	1	0	1	0	1	4
Vibrio parahaemolytic	0	0	1	0	0	1	5	7	3	17
West Nile	0	0	0	0	0	1	1	5	5	12
Yersinia	2	0	5	2	3	2	2	0	1	17
YTD	628	652	696	820	781	807	853	807	729	6773

Reported Cases of Select Notifiable Diseases or Conditions in Oregon by County
January-September 2013

	Baker	Benton	Clackamas	Clatsop	Columbia	Coos	Crook	Curry	Deschutes	Douglas	Gilliam	Grant	Harney
Botulism	0	0	0	0	0	0	0	0	1	0	0	0	0
Brucellosis	0	0	0	0	0	0	0	0	0	0	0	0	0
Campylobacter	2	19	60	4	15	8	7	4	36	14	0	2	5
Ciguatera	0	0	0	0	0	0	0	0	0	0	0	0	0
Cryptosporidiosis	111	2	12	3	1	1	0	0	2	7	0	0	1
Dengue Fever	0	1	1	0	0	0	0	0	0	0	0	0	0
E. coli(STEC)	0	5	10	0	0	1	1	0	3	3	0	1	0
Giardiasis	0	7	27	4	1	0	1	1	12	7	1	0	0
HUS	0	0	2	0	0	0	1	0	0	0	0	0	0
Haemophilus influenza	0	2	5	3	0	2	1	0	5	2	0	1	0
Hantavirus pulmonary	0	0	0	0	0	0	0	0	1	0	0	0	0
Hepatitis A (acute)	2	1	1	0	0	0	0	0	0	0	0	0	0
Hepatitis B (acute)	0	1	1	0	2	1	0	0	0	0	0	0	0
Hepatitis B (chronic)	0	7	26	6	4	3	0	0	5	3	0	0	0
Hepatitis C (acute)	0	0	5	0	0	0	0	0	1	0	0	0	0
Hepatitis C (chronic)	15	29	243	32	27	34	6	16	124	96	1	4	6
Legionellosis	0	0	2	0	0	0	0	0	0	0	0	0	0
Leishmaniasis	0	0	0	0	0	0	0	0	0	0	0	0	0
Listeriosis	0	0	0	0	0	0	0	0	0	0	0	0	0
Lyme disease	0	2	1	0	0	1	0	0	4	4	0	1	0
Malaria	0	0	2	0	1	0	0	0	0	0	0	0	0
Measles	0	0	0	0	0	0	0	0	0	0	0	0	0
Meningococcal Disease	0	0	2	0	0	0	0	0	0	0	0	0	0
Mumps	0	0	1	0	0	0	0	0	0	0	0	0	0
Pertussis	0	13	24	2	2	19	0	2	6	3	0	0	0
Psittacosis	0	0	0	0	2	0	0	0	0	0	0	0	0
Q fever	0	0	0	0	0	0	0	0	0	0	0	0	0
Rocky Mtn Spotted fev	0	0	0	0	0	0	0	0	1	0	0	0	0
Rubella	0	0	0	0	0	0	0	0	0	0	0	0	0
Salmonella	2	5	33	4	3	4	8	1	16	5	0	0	1
Shigella	0	1	3	0	0	0	0	0	0	1	0	0	0
Tetanus	0	0	0	0	0	0	0	0	0	0	0	0	0
Tularemia	0	0	0	0	0	0	0	0	0	0	0	0	0
Typhus (murine)	0	0	0	0	0	0	0	0	0	1	0	0	0
Vibrio parahaemolytic	0	8	4	0	1	2	0	0	1	1	0	0	0
West Nile	0	1	0	0	0	0	0	0	0	0	0	0	2
Yersinia	1	0	1	0	0	1	0	1	0	0	0	0	0
All	133	104	466	58	59	77	25	25	218	147	2	9	15

Reported Cases of Select Notifiable Diseases or Conditions in Oregon by County
January-September 2013

	Hood River	Jackson	Jefferson	Josephine	Klamath	Lake	Lane	Lincoln	Linn	Malheur	Marion	Morrow	Multnomah
Botulism	0	0	0	0	0	0	0	0	0	0	0	0	1
Brucellosis	0	0	0	0	0	0	0	0	0	0	1	0	1
Campylobacter	4	22	5	6	14	3	58	6	23	7	35	3	183
Ciguatera	0	0	0	0	0	0	0	0	0	0	0	0	1
Cryptosporidiosis	0	9	0	0	3	0	6	3	7	0	5	0	17
Dengue Fever	0	0	0	0	1	0	0	0	0	0	0	0	0
E. coli(STEC)	2	6	0	3	6	1	16	3	8	2	23	0	23
Giardiasis	0	11	1	4	1	0	22	3	9	1	9	0	103
HUS	0	3	0	0	2	0	1	0	1	0	3	0	2
Haemophilus influenza	0	6	0	1	1	0	9	2	5	2	4	0	10
Hantavirus pulmonary	0	0	0	0	0	0	0	0	0	0	0	0	0
Hepatitis A (acute)	0	2	0	0	0	0	3	1	0	0	2	0	4
Hepatitis B (acute)	0	2	0	2	0	0	1	0	0	0	3	0	12
Hepatitis B (chronic)	2	4	2	4	3	0	21	1	3	2	24	0	133
Hepatitis C (acute)	0	1	0	0	0	0	3	1	0	0	1	0	0
Hepatitis C (chronic)	3	162	59	74	58	12	328	58	115	32	242	0	551
Legionellosis	0	1	0	0	0	0	4	0	1	0	0	0	7
Leishmaniasis	0	0	0	0	0	0	0	0	0	0	0	0	1
Listeriosis	0	0	0	1	0	0	0	0	0	0	0	0	0
Lyme disease	0	6	0	8	1	0	2	0	1	0	0	0	9
Malaria	0	0	0	0	0	0	1	0	0	0	0	0	7
Measles	0	0	0	0	0	0	0	0	0	0	3	0	1
Meningococcal Disease	0	0	0	0	0	0	2	0	1	0	2	0	1
Mumps	0	0	0	0	0	0	1	0	0	0	0	0	0
Pertussis	0	18	1	45	53	0	104	1	17	1	51	0	44
Psittacosis	0	0	0	0	0	0	0	0	0	0	0	0	0
Q fever	0	0	0	0	1	0	0	0	0	0	0	0	0
Rocky Mtn Spotted fev	0	0	0	0	0	0	0	0	0	0	0	0	0
Rubella	0	0	0	0	0	0	0	0	0	0	1	0	0
Salmonella	3	13	2	3	3	0	29	3	8	3	32	1	52
Shigella	0	2	0	0	0	0	1	0	5	0	8	0	17
Tetanus	0	1	0	0	0	0	0	0	0	0	0	0	0
Tularemia	0	1	0	0	0	0	0	0	0	0	0	0	0
Typhus (murine)	0	0	0	0	0	0	1	0	0	0	0	0	0
Vibrio parahaemolytic	0	0	0	0	0	0	3	0	1	0	0	0	2
West Nile	0	0	0	0	0	0	1	0	1	10	0	0	0
Yersinia	0	1	0	0	0	0	5	0	1	0	1	0	6
All	14	271	70	151	147	16	622	82	207	60	450	4	1188

Reported Cases of Select Notifiable Diseases or Conditions in Oregon by County
January-September 2013

	Out Of Sta	Polk	Sherman	Tillamook	Umatilla	Union	Wallowa	Wasco	Washington	Wheeler	Yamhill	All
Botulism	0	0	0	0	1	0	0	0	0	0	0	3
Brucellosis	0	0	0	0	0	0	0	0	0	0	0	2
Campylobacter	0	9	1	3	13	2	3	1	67	0	16	660
Ciguatera	0	0	0	0	0	0	0	0	0	0	0	1
Cryptosporidiosis	0	0	0	4	1	3	0	0	19	0	1	218
Dengue Fever	1	1	0	0	0	0	0	0	0	0	0	5
E. coli(STEC)	0	1	0	3	3	2	0	0	21	0	4	151
Giardiasis	0	1	0	3	4	2	0	1	37	0	3	276
HUS	0	0	0	0	0	0	0	0	0	0	0	15
Haemophilus influenza	0	3	0	0	0	0	0	0	3	0	1	68
Hantavirus pulmonary	0	0	0	0	0	0	0	0	0	0	0	1
Hepatitis A (acute)	1	0	0	0	0	3	0	0	6	0	0	26
Hepatitis B (acute)	0	0	0	0	0	0	0	0	5	0	2	32
Hepatitis B (chronic)	0	4	0	0	3	0	0	1	54	0	0	315
Hepatitis C (acute)	0	0	0	0	0	0	0	0	0	0	0	12
Hepatitis C (chronic)	4	44	0	15	62	11	4	14	275	1	81	2838
Legionellosis	0	0	0	0	0	0	0	0	2	0	0	17
Leishmaniasis	0	0	0	0	0	0	0	0	0	0	0	1
Listeriosis	0	1	0	0	0	0	0	0	1	0	0	3
Lyme disease	0	1	0	1	1	0	0	1	0	1	0	45
Malaria	0	0	0	0	0	0	0	0	1	0	0	12
Measles	0	0	0	0	0	0	0	0	0	0	0	4
Meningococcal Disease	0	0	0	0	0	0	0	1	1	0	0	10
Mumps	0	0	0	0	0	0	0	0	0	0	1	3
Pertussis	1	5	0	0	1	2	0	1	11	0	2	429
Psittacosis	0	0	0	0	0	0	0	0	0	0	0	2
Q fever	0	0	0	0	0	0	0	0	0	0	0	1
Rocky Mtn Spotted fev	0	0	0	0	0	0	0	0	0	0	0	1
Rubella	0	0	0	0	0	0	0	0	0	0	0	1
Salmonella	0	17	1	1	9	1	0	4	33	0	16	316
Shigella	0	0	0	0	0	0	0	0	5	0	0	43
Tetanus	0	0	0	0	0	0	0	0	0	0	0	1
Tularemia	0	0	0	0	0	0	0	0	0	0	0	1
Typhus (murine)	0	0	0	0	0	0	0	0	0	0	0	2
Vibrio parahaemolytic	0	0	0	0	0	0	0	0	2	0	0	25
West Nile	0	0	0	0	0	0	0	0	0	0	0	15
Yersinia	0	0	0	0	0	1	0	0	4	0	0	23
All	7	87	2	30	98	27	7	24	547	2	127	5578

Reported Cases of Low Incident Notifiable Diseases or Conditions by Year in Oregon
January-September

	2004	2005	2006	2007	2008	2009	2010	2011	2012	2013	Total
Babesiosis	0	0	0	0	0	1	0	1	0	0	2
Botulism	3	1	0	1	2	0	1	2	6	3	19
Brucellosis	0	1	0	1	1	3	1	1	0	2	10
Ciguatera	0	0	0	0	0	0	0	0	1	1	2
Colorado Tick Fever	1	0	0	0	3	1	0	1	1	0	7
Cyclosporiasis	0	25	0	0	0	0	0	0	1	0	26
Dengue Fever	0	6	1	3	5	4	5	2	3	5	34
Ehrlichiosis	0	0	1	1	1	3	0	4	0	0	10
Filariasis	0	1	0	0	0	0	0	0	0	0	1
Hantavirus pulmonary	0	1	1	1	0	2	3	2	2	1	13
Leishmaniasis	0	0	0	0	0	0	0	0	0	1	1
Leprosy	2	2	0	0	0	2	0	0	0	0	6
Leptospirosis	1	1	1	0	1	0	0	1	0	0	5
Measles	0	2	2	2	1	0	0	3	1	4	15
Mumps	0	0	18	0	0	2	2	4	2	3	31
Plague	0	0	0	0	0	0	2	1	2	0	5
Psittacosis	0	1	3	1	1	0	0	0	0	2	8
Q fever	3	1	0	2	1	3	2	2	3	1	18
Relapsing Fever	4	1	2	0	1	3	0	0	3	0	14
Rocky Mtn Spotted fev	2	2	2	2	3	0	1	0	1	1	14
Rubella	0	1	0	0	0	0	0	0	0	1	2
Taeniasis	0	5	1	1	5	49	1	4	4	0	70
Tetanus	0	0	0	0	0	0	0	0	0	1	1
Tularemia	2	2	3	3	2	1	2	5	0	1	21
Typhus (murine)	0	1	0	0	0	0	0	0	0	2	3
Total	18	54	35	18	27	74	20	33	30	29	338

For a breakdown of Chlamydia, Gonorrhea, HIV, or Early Syphilis in Oregon by county and quarter of report in 2012 please visit

Chlamydia, Gonorrhea, or Early Syphilis

<http://public.health.oregon.gov/DISEASES/CONDITIONS/COMMUNICABLEDISEASE/DISEASESURVEILLANCE/STDPAGES/index.aspx#countyquarter>

HIV

<http://public.health.oregon.gov/DiseasesConditions/CommunicableDisease/DiseaseSurveillanceData/HIVData/Pages/epiprofile.aspx>

Oregon Campylobacter Cases
January-September

	Age Group in Years													Total
	00-04	05-09	10-14	15-19	20-24	25-29	30-39	40-49	50-59	60-69	70-79	80+		
2004	46	22	23	28	29	38	73	83	72	52	31	14	511	
2005	52	24	25	34	32	34	80	76	87	54	26	11	535	
2006	51	26	18	28	50	31	63	76	79	46	28	10	506	
2007	59	35	15	29	45	31	74	84	83	52	36	20	563	
2008	74	24	24	26	32	32	74	89	107	51	17	10	560	
2009	71	32	14	26	39	46	78	79	87	59	37	21	589	
2010	85	27	14	40	41	69	93	83	90	61	38	21	662	
2011	87	36	33	39	37	63	107	102	110	98	36	30	778	
2012	75	23	20	24	47	43	113	101	111	110	39	23	729	
2013	60	32	18	35	38	58	110	81	98	77	32	21	660	
Total	660	281	204	309	390	445	865	854	924	660	320	181	6093	

	Sex			Total
	F	M	U	
2004	228	281	2	511
2005	244	290	1	535
2006	249	258	0	507
2007	246	313	4	563
2008	266	294	0	560
2009	286	305	0	591
2010	290	373	0	663
2011	369	411	0	780
2012	351	378	0	729
2013	300	360	0	660
Total	2829	3263	7	6099

	Race					Total
	A	B	N	W	U	
2004	3	1	2	321	184	511
2005	3	2	5	260	265	535
2006	4	3	1	256	243	507
2007	3	1	0	230	329	563
2008	2	4	5	261	288	560
2009	7	3	1	256	324	591
2010	4	7	6	340	306	663
2011	9	2	1	399	369	780
2012	6	1	5	404	313	729
2013	7	3	6	377	267	660
Total	48	27	32	3104	2888	6099

	2004	2005	2006	2007	2008	2009	2010	2011	2012	2013	Total
Baker	0	0	3	1	3	3	2	4	2	2	20
Benton	18	15	17	20	15	19	33	11	15	19	182
Clackamas	54	51	55	65	50	48	54	83	70	60	590
Clatsop	4	2	5	10	3	3	6	7	10	4	54
Columbia	7	3	6	3	5	2	7	5	5	15	58
Coos	5	8	7	9	10	9	10	19	12	8	97
Crook	2	2	1	1	6	7	10	5	3	7	44
Curry	3	2	1	1	9	7	4	8	3	4	42
Deschutes	30	30	27	38	33	22	48	47	39	36	350
Douglas	11	12	7	11	13	6	13	18	14	14	119
Gilliam	1	0	0	0	0	0	0	2	0	0	3
Grant	3	0	0	0	3	1	1	3	2	2	15
Harney	2	3	4	3	3	4	1	5	1	5	31
Hood River	3	3	2	2	3	2	2	4	5	4	30
Jackson	19	23	19	41	27	32	17	34	34	22	268
Jefferson	3	4	4	7	4	10	1	3	6	5	47
Josephine	12	9	10	2	2	6	9	12	9	6	77
Klamath	7	18	12	7	6	11	5	14	12	14	106
Lake	5	3	1	1	1	4	3	3	0	3	24
Lane	47	53	49	49	58	56	69	69	74	58	582
Lincoln	6	6	6	1	1	5	5	6	8	6	50
Linn	15	19	21	18	21	29	20	34	31	23	231
Malheur	11	8	9	4	7	3	5	10	6	7	70
Marion	33	38	26	46	52	46	42	48	53	35	419
Morrow	3	1	1	0	1	4	2	5	2	3	22
Multnomah	101	112	89	106	112	140	159	165	158	183	1325
Polk	3	7	8	4	5	7	12	8	16	9	79
Sherman	0	0	0	0	0	0	1	0	0	1	2
Tillamook	5	5	2	5	5	3	0	5	3	3	36
Umatilla	11	10	20	6	5	7	10	6	9	13	97
Union	6	4	7	7	6	2	3	6	8	2	51
Wallowa	3	0	1	0	1	1	2	1	3	3	15
Wasco	1	2	2	4	4	5	5	3	5	1	32
Washington	66	65	78	80	79	75	84	109	93	67	796
Wheeler	0	0	0	0	0	0	0	0	0	0	0
Yamhill	11	17	7	11	7	12	18	18	18	16	135
Total	511	535	507	563	560	591	663	780	729	660	6099

Oregon Cryptosporidiosis Cases
January-September

	Age Group in Years												Total
	00-04	05-09	10-14	15-19	20-24	25-29	30-39	40-49	50-59	60-69	70-79	80+	
2004	1	5	1	1	3	2	3	6	4	1	1	0	28
2005	9	15	4	3	2	8	6	8	4	0	1	0	60
2006	6	8	8	2	2	9	9	8	7	2	1	3	65
2007	11	12	30	16	12	11	19	11	10	4	5	2	143
2008	11	3	3	4	6	5	9	4	5	5	1	0	56
2009	9	5	6	8	14	16	30	32	27	16	11	11	185
2010	22	13	2	8	12	9	24	21	24	17	12	6	170
2011	12	6	5	9	18	14	26	17	21	20	15	5	168
2012	7	10	5	11	16	21	31	23	19	19	12	4	178
2013	10	14	6	21	14	22	28	33	25	27	10	8	218
Total	98	91	70	83	99	117	185	163	146	111	69	39	1271

	Sex			Total
	F	M	U	
2004	12	16	0	28
2005	36	23	1	60
2006	36	30	0	66
2007	86	58	1	145
2008	29	27	0	56
2009	118	67	1	186
2010	93	77	0	170
2011	105	63	0	168
2012	97	81	0	178
2013	141	76	1	218
Total	753	518	4	1275

	Race					Total
	A	B	N	W	U	
2004	0	0	0	17	11	28
2005	1	0	1	30	28	60
2006	0	1	0	43	22	66
2007	0	0	1	59	85	145
2008	0	2	0	47	7	56
2009	2	1	0	157	26	186
2010	2	3	2	144	19	170
2011	4	1	2	144	17	168
2012	4	0	1	161	12	178
2013	3	2	2	131	80	218
Total	16	10	9	933	307	1275

	2004	2005	2006	2007	2008	2009	2010	2011	2012	2013	Total
Baker	0	0	0	1	0	0	0	0	1	111	113
Benton	0	0	1	0	2	0	1	14	3	2	23
Clackamas	5	5	6	23	12	34	20	21	20	12	158
Clatsop	0	0	0	1	0	3	1	5	1	3	14
Columbia	0	0	1	1	0	7	8	2	5	1	25
Coos	1	0	0	0	1	1	1	0	1	1	6
Crook	0	0	9	0	0	0	0	1	0	0	10
Curry	0	0	0	0	0	2	1	0	0	0	3
Deschutes	1	0	0	7	1	4	0	0	0	2	15
Douglas	0	0	1	1	1	7	4	1	14	7	36
Gilliam	0	0	0	0	0	0	0	0	0	0	0
Grant	0	0	0	0	0	0	0	1	0	0	1
Harney	0	0	0	0	2	14	1	0	0	1	18
Hood River	0	0	1	2	1	1	0	1	2	0	8
Jackson	2	30	9	25	6	29	10	2	9	9	131
Jefferson	0	0	0	0	0	0	1	0	0	0	1
Josephine	0	1	0	1	1	4	1	0	3	0	11
Klamath	1	0	4	2	0	0	1	1	1	3	13
Lake	0	0	1	0	0	0	0	0	0	0	1
Lane	3	4	4	11	2	15	12	10	11	6	78
Lincoln	0	0	0	0	0	1	3	3	2	3	12
Linn	0	0	0	1	0	1	14	11	5	7	39
Malheur	1	1	0	3	0	0	0	1	3	0	9
Marion	1	2	1	4	0	8	12	14	3	5	50
Morrow	0	1	0	2	0	0	0	1	0	0	4
Multnomah	6	11	21	34	16	28	44	48	53	17	278
Polk	0	0	0	1	0	0	0	0	0	0	1
Sherman	0	0	0	0	0	0	0	0	0	0	0
Tillamook	0	0	1	5	4	3	1	3	7	4	28
Umatilla	0	0	0	0	0	0	0	0	1	1	2
Union	0	0	0	0	0	1	1	1	0	3	6
Wallowa	0	0	0	0	0	0	0	0	0	0	0
Wasco	0	0	0	0	0	0	1	0	0	0	1
Washington	7	5	6	20	7	21	31	25	33	19	174
Wheeler	0	0	0	0	0	0	0	0	0	0	0
Yamhill	0	0	0	0	0	2	1	2	0	1	6
Total	28	60	66	145	56	186	170	168	178	218	1275

Oregon E. coli(STEC) Cases
January-September

	Age Group in Years												Total
	00-04	05-09	10-14	15-19	20-24	25-29	30-39	40-49	50-59	60-69	70-79	80+	
2004	13	14	3	3	2	1	2	5	5	2	3	0	53
2005	18	9	17	2	2	2	7	5	5	1	1	1	70
2006	18	10	8	6	2	8	8	8	4	7	5	3	87
2007	12	8	5	10	4	3	4	5	8	5	2	3	69
2008	15	4	2	7	5	4	6	3	3	1	6	0	56
2009	12	7	7	6	6	5	3	4	5	4	2	1	62
2010	14	9	7	9	2	8	4	6	0	8	4	3	74
2011	22	9	10	14	5	6	1	3	2	8	5	6	91
2012	40	15	22	8	12	6	13	6	11	7	4	4	148
2013	25	17	17	19	15	10	14	8	4	12	8	2	151
Total	189	102	98	84	55	53	62	53	47	55	40	23	861

	Sex			Total
	F	M	U	
2004	32	21	0	53
2005	37	33	0	70
2006	48	40	0	88
2007	38	31	0	69
2008	25	31	0	56
2009	31	31	0	62
2010	34	40	0	74
2011	59	32	0	91
2012	68	80	0	148
2013	81	70	0	151
Total	453	409	0	862

	Race					Total
	A	B	N	W	U	
2004	1	0	0	45	7	53
2005	3	0	0	59	8	70
2006	3	0	0	80	5	88
2007	1	1	0	57	10	69
2008	2	0	0	51	3	56
2009	1	0	1	57	3	62
2010	2	0	0	68	4	74
2011	0	1	0	84	6	91
2012	0	2	3	126	17	148
2013	4	1	2	132	12	151
Total	17	5	6	759	75	862

	2004	2005	2006	2007	2008	2009	2010	2011	2012	2013	Total
Baker	0	0	0	0	0	0	0	2	0	0	2
Benton	5	4	6	3	2	3	2	6	3	5	39
Clackamas	5	7	10	12	5	16	7	6	20	10	98
Clatsop	1	0	0	1	0	0	0	4	1	0	7
Columbia	0	0	0	0	0	0	0	0	1	0	1
Coos	0	0	0	1	0	0	0	1	0	1	3
Crook	1	1	1	0	1	0	2	0	4	1	11
Curry	0	0	0	0	0	0	0	0	0	0	0
Deschutes	0	1	4	3	4	0	3	4	8	3	30
Douglas	4	2	4	7	3	6	2	4	10	3	45
Gilliam	0	0	0	0	0	0	0	0	0	0	0
Grant	0	0	1	0	0	1	0	1	0	1	4
Harney	0	1	0	1	0	0	0	0	2	0	4
Hood River	0	0	0	0	0	0	0	1	0	2	3
Jackson	4	1	3	3	1	3	8	4	3	6	36
Jefferson	0	0	1	0	0	0	0	0	2	0	3
Josephine	0	1	0	0	0	0	0	1	2	3	7
Klamath	0	1	2	0	0	0	2	0	7	6	18
Lake	0	0	0	1	1	0	0	0	3	1	6
Lane	4	14	8	6	2	8	6	3	7	16	74
Lincoln	0	0	0	1	2	0	0	0	0	3	6
Linn	2	4	7	3	2	1	6	3	10	8	46
Malheur	3	0	2	1	2	0	1	4	1	2	16
Marion	8	11	10	4	6	7	7	8	19	23	103
Morrow	0	0	1	2	0	0	0	0	0	0	3
Multnomah	2	9	13	13	15	3	9	15	20	23	122
Polk	1	4	2	2	1	3	2	0	2	1	18
Sherman	0	0	0	0	0	0	0	0	0	0	0
Tillamook	1	0	0	1	1	0	1	0	1	3	8
Umatilla	2	1	3	0	4	1	0	2	2	3	18
Union	0	0	0	0	0	0	0	0	0	2	2
Wallowa	1	0	0	0	0	0	0	0	1	0	2
Wasco	1	0	0	0	0	1	2	0	0	0	4
Washington	6	7	8	3	1	6	11	14	13	21	90
Wheeler	0	0	0	0	0	0	0	1	0	0	1
Yamhill	2	1	2	1	3	3	3	7	6	4	32
Total	53	70	88	69	56	62	74	91	148	151	862

Oregon Giardiasis Cases
January-September

	Age Group in Years												Total
	00-04	05-09	10-14	15-19	20-24	25-29	30-39	40-49	50-59	60-69	70-79	80+	
2004	50	27	21	10	23	26	60	46	43	21	11	2	340
2005	56	43	13	14	13	22	51	45	49	13	7	5	331
2006	51	28	9	14	22	24	46	49	36	22	7	1	309
2007	54	31	14	13	25	12	46	54	48	22	11	6	336
2008	60	29	19	22	17	26	51	39	51	34	6	7	361
2009	60	34	24	18	20	24	33	36	30	28	8	1	316
2010	79	33	14	23	19	26	44	54	51	31	7	5	386
2011	56	28	23	15	20	23	38	55	42	23	7	4	334
2012	31	16	22	24	21	15	44	38	34	26	10	3	284
2013	33	25	15	10	23	22	40	39	28	28	11	2	276
Total	530	294	174	163	203	220	453	455	412	248	85	36	3273

	Sex			Total
	F	M	U	
2004	151	189	1	341
2005	157	171	4	332
2006	138	167	9	314
2007	154	180	3	337
2008	162	196	3	361
2009	140	175	2	317
2010	166	220	3	389
2011	144	189	1	334
2012	119	165	0	284
2013	121	155	0	276
Total	1452	1807	26	3285

	Race					Total
	A	B	N	W	U	
2004	6	10	5	186	134	341
2005	9	7	3	160	153	332
2006	3	7	2	141	161	314
2007	13	13	2	135	174	337
2008	22	20	0	149	170	361
2009	8	17	4	123	165	317
2010	8	38	3	129	211	389
2011	6	36	4	120	168	334
2012	5	13	5	124	137	284
2013	10	22	3	98	143	276
Total	90	183	31	1365	1616	3285

	2004	2005	2006	2007	2008	2009	2010	2011	2012	2013	Total
Baker	1	2	3	0	0	0	0	0	0	0	6
Benton	5	6	8	7	17	7	12	9	7	7	85
Clackamas	27	33	27	22	27	19	23	24	15	27	244
Clatsop	10	6	3	4	2	0	1	3	2	4	35
Columbia	2	4	1	2	4	4	2	2	2	1	24
Coos	5	4	3	7	9	16	9	4	3	0	60
Crook	2	0	0	0	2	2	2	0	0	1	9
Curry	0	0	1	0	2	2	3	2	1	1	12
Deschutes	22	9	30	24	32	18	31	19	21	12	218
Douglas	12	16	9	6	15	7	6	6	10	7	94
Gilliam	0	0	0	0	0	0	0	1	0	1	2
Grant	0	0	0	0	2	0	1	0	0	0	3
Harney	0	0	1	0	1	0	0	1	1	0	4
Hood River	3	2	3	3	2	2	0	1	1	0	17
Jackson	16	11	21	16	15	19	9	9	8	11	135
Jefferson	6	1	1	1	1	3	2	2	1	1	19
Josephine	5	10	4	3	5	7	6	7	4	4	55
Klamath	1	3	7	4	5	5	3	6	6	1	41
Lake	0	0	2	0	0	1	1	0	1	0	5
Lane	55	27	31	49	33	32	34	37	29	22	349
Lincoln	4	6	3	4	1	4	7	3	2	3	37
Linn	10	4	6	8	8	6	8	5	12	9	76
Malheur	2	0	0	1	1	0	2	1	2	1	10
Marion	18	22	25	18	19	16	16	20	17	9	180
Morrow	0	0	0	1	0	1	2	1	0	0	5
Multnomah	72	88	67	102	99	94	140	113	92	103	970
Polk	3	6	2	7	8	9	5	5	4	1	50
Sherman	0	0	0	0	0	0	0	0	0	0	0
Tillamook	1	6	2	3	4	1	1	1	0	3	22
Umatilla	2	6	0	2	3	4	8	3	9	4	41
Union	0	0	0	2	1	3	2	2	2	2	14
Wallowa	0	0	1	1	0	1	0	1	0	0	4
Warm Sprin	0	0	0	0	0	1	0	0	0	0	1
Wasco	2	1	3	0	0	2	1	5	2	1	17
Washington	51	55	46	33	37	21	48	35	24	37	387
Wheeler	0	0	0	0	0	0	0	0	0	0	0
Yamhill	4	4	4	7	6	10	4	6	6	3	54
Total	341	332	314	337	361	317	389	334	284	276	3285

Oregon Haemophilus influenzae Cases
January-September

	Age Group in Years												Total
	00-04	05-09	10-14	15-19	20-24	25-29	30-39	40-49	50-59	60-69	70-79	80+	
2004	3	2	1	0	0	0	1	3	6	4	7	8	35
2005	5	1	0	2	1	0	1	2	6	5	7	7	37
2006	2	2	0	1	2	0	2	3	3	3	3	15	36
2007	9	0	0	0	2	0	3	2	2	10	6	15	49
2008	4	1	1	0	0	1	4	5	5	11	3	8	43
2009	5	0	0	0	1	1	0	1	6	6	6	8	34
2010	6	3	1	1	1	0	1	5	8	7	7	10	50
2011	2	1	0	1	0	2	3	1	8	15	11	14	58
2012	6	3	1	0	0	0	1	2	17	10	9	7	56
2013	10	2	0	1	1	0	2	6	8	13	11	14	68
Total	52	15	4	6	8	4	18	30	69	84	70	106	466

	Sex			Total
	F	M	U	
2004	18	17	0	35
2005	24	13	0	37
2006	22	13	1	36
2007	23	25	1	49
2008	23	20	0	43
2009	11	23	0	34
2010	27	23	0	50
2011	31	27	0	58
2012	27	29	0	56
2013	40	28	0	68
Total	246	218	2	466

	Race					Total
	A	B	N	W	U	
2004	0	0	1	24	10	35
2005	1	1	0	27	8	37
2006	1	0	0	26	9	36
2007	0	0	0	41	8	49
2008	1	1	1	33	7	43
2009	0	1	0	21	12	34
2010	0	0	2	38	10	50
2011	1	0	0	42	15	58
2012	0	0	1	42	13	56
2013	0	0	0	52	16	68
Total	4	3	5	346	108	466

	2004	2005	2006	2007	2008	2009	2010	2011	2012	2013	Total
Baker	0	0	0	0	0	0	0	0	0	0	0
Benton	0	0	1	2	0	1	0	1	0	2	7
Clackamas	1	3	4	8	3	1	3	7	2	5	37
Clatsop	0	0	0	0	0	0	2	0	0	3	5
Columbia	0	0	0	1	0	1	1	1	0	0	4
Coos	2	2	2	2	2	1	3	2	0	2	18
Crook	0	1	0	0	1	0	0	0	0	1	3
Curry	0	0	0	0	0	0	0	0	1	0	1
Deschutes	1	1	3	3	3	1	1	1	2	5	21
Douglas	2	0	0	0	1	1	2	3	1	2	12
Gilliam	0	0	0	0	0	0	0	0	0	0	0
Grant	0	0	0	0	0	0	0	0	0	1	1
Harney	0	0	0	0	0	0	0	0	0	0	0
Hood River	0	0	0	0	0	0	0	0	0	0	0
Jackson	2	4	3	5	3	0	2	2	5	6	32
Jefferson	0	1	1	0	0	2	2	0	1	0	7
Josephine	1	1	3	2	5	4	2	7	3	1	29
Klamath	2	0	0	2	0	0	0	2	1	1	8
Lake	0	0	0	0	0	0	0	0	0	0	0
Lane	4	2	9	9	4	5	6	4	6	9	58
Lincoln	1	0	0	0	0	1	0	1	1	2	6
Linn	1	2	1	1	5	0	1	2	1	5	19
Malheur	0	0	0	0	0	0	0	0	0	2	2
Marion	1	7	2	1	4	3	2	4	10	4	38
Morrow	0	0	0	0	0	0	1	0	0	0	1
Multnomah	8	8	4	4	6	9	7	14	11	10	81
Polk	0	0	0	0	0	0	2	1	1	3	7
Sherman	0	0	0	0	0	0	0	0	0	0	0
Tillamook	0	0	0	0	0	0	1	0	0	0	1
Umatilla	0	0	0	1	0	0	1	0	3	0	5
Union	0	0	0	1	0	0	0	1	2	0	4
Wallowa	0	0	0	0	0	0	0	0	0	0	0
Wasco	0	0	0	0	0	1	1	0	0	0	2
Washington	6	4	1	4	6	2	7	3	4	3	40
Wheeler	0	0	0	0	0	0	0	0	0	0	0
Yamhill	3	1	2	3	0	1	3	2	1	1	17
Total	35	37	36	49	43	34	50	58	56	68	466

Oregon Hepatitis A (acute) Cases
January-September

	Age Group in Years												Total
	00-04	05-09	10-14	15-19	20-24	25-29	30-39	40-49	50-59	60-69	70-79	80+	
2004	4	8	4	2	1	4	7	5	9	3	2	6	55
2005	1	3	1	3	4	2	5	3	4	2	2	5	35
2006	2	2	2	2	3	0	4	6	4	5	5	0	35
2007	0	1	0	0	3	4	5	3	2	1	2	1	22
2008	3	1	1	1	4	2	4	6	2	0	0	1	25
2009	0	1	1	0	0	2	2	1	5	1	0	0	13
2010	0	0	0	0	2	1	2	2	2	2	2	2	15
2011	1	0	0	0	0	1	1	1	0	0	3	1	8
2012	0	0	0	0	0	0	0	1	0	1	0	0	2
2013	0	0	1	0	2	1	3	4	9	4	2	0	26
Total	11	16	10	8	19	17	33	32	37	19	18	16	236

	Sex			Total
	F	M	U	
2004	24	31	0	55
2005	20	15	0	35
2006	20	15	0	35
2007	8	14	0	22
2008	12	13	0	25
2009	3	10	0	13
2010	4	11	0	15
2011	6	2	0	8
2012	1	1	0	2
2013	15	11	0	26
Total	113	123	0	236

	Race					Total
	A	B	N	W	U	
2004	2	0	1	43	9	55
2005	0	0	0	32	3	35
2006	1	0	0	31	3	35
2007	1	0	0	19	2	22
2008	1	1	0	19	4	25
2009	0	0	0	12	1	13
2010	1	1	0	12	1	15
2011	1	1	0	6	0	8
2012	0	0	0	2	0	2
2013	0	0	1	24	1	26
Total	7	3	2	200	24	236

	2004	2005	2006	2007	2008	2009	2010	2011	2012	2013	Total
Baker	0	0	0	0	0	0	0	0	0	2	2
Benton	1	1	1	0	0	1	0	0	0	1	5
Clackamas	1	3	1	1	1	0	3	1	0	1	12
Clatsop	0	0	2	0	0	0	0	0	0	0	2
Columbia	0	0	0	0	1	0	0	0	0	0	1
Coos	4	0	0	0	0	0	0	0	0	0	4
Crook	1	0	0	0	0	0	0	0	0	0	1
Curry	0	0	0	0	0	0	0	0	0	0	0
Deschutes	1	0	2	3	1	0	2	1	0	0	10
Douglas	3	3	0	0	1	0	0	0	0	0	7
Gilliam	0	0	0	0	0	0	0	0	0	0	0
Grant	0	0	0	0	0	0	0	0	0	0	0
Harney	0	0	0	0	0	0	0	0	0	0	0
Hood River	1	0	1	0	2	0	0	2	0	0	6
Jackson	2	0	0	1	0	0	1	0	0	2	6
Jefferson	1	0	0	0	0	0	0	0	0	0	1
Josephine	0	1	0	1	1	0	0	0	0	0	3
Klamath	0	0	0	1	0	1	0	0	1	0	3
Lake	0	0	0	0	0	0	0	0	0	0	0
Lane	6	5	5	1	2	3	2	0	0	3	27
Lincoln	1	1	0	1	0	0	0	0	0	1	4
Linn	3	1	0	0	0	0	0	0	0	0	4
Malheur	2	0	0	1	0	0	0	1	0	0	4
Marion	10	3	4	0	1	1	1	0	0	2	22
Morrow	0	0	0	0	0	0	0	0	0	0	0
Multnomah	10	9	5	10	8	3	2	2	0	4	53
Out Of Sta	0	0	0	0	0	0	0	0	0	1	1
Polk	1	1	0	1	0	0	1	0	0	0	4
Sherman	0	0	0	0	0	0	0	0	0	0	0
Tillamook	0	0	6	0	0	0	0	0	0	0	6
Umatilla	1	1	1	0	0	0	0	0	0	0	3
Union	2	0	0	0	0	0	0	0	0	3	5
Wallowa	0	0	0	0	0	0	0	0	0	0	0
Wasco	0	0	0	0	0	0	0	0	0	0	0
Washington	3	4	7	1	6	4	3	1	1	6	36
Wheeler	0	0	0	0	0	0	0	0	0	0	0
Yamhill	1	2	0	0	1	0	0	0	0	0	4
Total	55	35	35	22	25	13	15	8	2	26	236

Oregon Hepatitis B (acute) Cases
January-September

	Age Group in Years												Total
	00-04	05-09	10-14	15-19	20-24	25-29	30-39	40-49	50-59	60-69	70-79	80+	
2004	0	0	0	0	8	11	26	33	9	5	1	0	93
2005	0	0	0	1	5	9	22	24	19	4	2	0	86
2006	0	0	0	0	5	6	14	20	8	4	0	0	57
2007	0	0	0	0	2	4	17	15	7	1	1	0	47
2008	1	0	0	0	1	3	9	13	9	3	0	0	39
2009	0	0	0	0	1	2	11	6	8	4	1	0	33
2010	0	0	0	0	1	1	8	11	12	3	0	0	36
2011	0	0	0	0	1	1	3	8	9	4	0	1	27
2012	0	0	0	0	1	1	2	8	5	2	2	0	21
2013	0	0	1	1	1	6	5	8	5	4	1	0	32
Total	1	0	1	2	26	44	117	146	91	34	8	1	471

	Sex			Total
	F	M	U	
2004	35	58	0	93
2005	36	50	0	86
2006	19	38	0	57
2007	17	30	0	47
2008	4	35	0	39
2009	10	23	0	33
2010	14	22	0	36
2011	5	22	0	27
2012	9	12	0	21
2013	11	21	0	32
Total	160	311	0	471

	Race					Total
	A	B	N	W	U	
2004	6	0	2	66	19	93
2005	6	2	2	64	12	86
2006	1	5	0	47	4	57
2007	2	1	0	38	6	47
2008	1	1	1	29	7	39
2009	0	0	0	32	1	33
2010	0	0	0	34	2	36
2011	1	1	0	24	1	27
2012	1	0	0	17	3	21
2013	4	1	1	21	5	32
Total	22	11	6	372	60	471

	2004	2005	2006	2007	2008	2009	2010	2011	2012	2013	Total
Baker	0	0	0	0	0	0	0	0	0	0	0
Benton	3	0	0	2	0	0	0	0	0	1	6
Clackamas	10	9	4	5	7	4	5	3	1	1	49
Clatsop	1	0	2	0	0	0	0	1	0	0	4
Columbia	2	1	2	2	0	0	0	0	1	2	10
Coos	2	1	0	0	0	0	1	0	0	1	5
Crook	0	0	0	0	0	0	1	0	0	0	1
Curry	0	1	0	0	0	0	0	0	0	0	1
Deschutes	1	5	4	0	0	4	1	1	0	0	16
Douglas	4	1	2	3	1	1	1	0	0	0	13
Gilliam	0	0	0	0	0	0	0	0	0	0	0
Grant	0	0	0	0	0	0	0	0	0	0	0
Harney	0	0	0	0	0	0	0	0	0	0	0
Hood River	0	1	0	0	0	0	0	0	0	0	1
Jackson	1	7	4	2	5	2	1	1	0	2	25
Jefferson	0	0	0	0	0	0	0	0	0	0	0
Josephine	1	5	5	1	1	0	0	0	0	2	15
Klamath	2	0	1	0	1	0	0	0	0	0	4
Lake	0	0	0	0	0	0	0	0	0	0	0
Lane	15	10	10	7	6	3	3	3	4	1	62
Lincoln	2	1	1	0	1	0	0	0	1	0	6
Linn	10	5	2	3	3	0	2	1	0	0	26
Malheur	1	1	0	0	0	1	0	0	0	0	3
Marion	8	8	3	3	2	3	4	1	1	3	36
Morrow	0	0	0	0	0	0	0	0	0	0	0
Multnomah	18	14	12	12	5	10	7	9	4	12	103
Polk	3	2	1	0	0	0	2	1	0	0	9
Sherman	0	0	0	0	0	0	0	0	0	0	0
Tillamook	0	0	0	0	0	0	1	0	0	0	1
Umatilla	1	1	0	0	0	0	0	0	1	0	3
Union	0	0	1	0	0	0	0	0	1	0	2
Wallowa	0	0	0	0	0	0	0	0	0	0	0
Wasco	0	0	0	0	0	0	2	2	0	0	4
Washington	7	7	3	5	6	5	4	4	6	5	52
Wheeler	0	0	0	0	0	0	0	0	0	0	0
Yamhill	1	6	0	2	1	0	1	0	1	2	14
Total	93	86	57	47	39	33	36	27	21	32	471

Oregon Hepatitis B (chronic) Cases
January-September

	Age Group in Years												Total
	00-04	05-09	10-14	15-19	20-24	25-29	30-39	40-49	50-59	60-69	70-79	80+	
2004	4	1	1	20	27	34	126	82	54	23	4	0	376
2005	3	2	4	11	28	39	79	65	43	11	8	8	301
2006	3	3	5	10	31	44	97	71	34	16	2	5	321
2007	6	4	2	13	34	38	94	82	54	29	9	1	366
2008	8	6	5	17	29	36	99	92	61	32	9	8	402
2009	4	2	1	6	25	33	86	72	59	37	7	6	338
2010	5	0	1	10	16	38	76	75	66	29	8	4	328
2011	1	3	3	4	29	31	69	76	73	27	8	3	327
2012	2	3	5	6	14	33	67	63	54	45	5	5	302
2013	1	0	0	7	30	31	76	62	55	34	15	4	315
Total	37	24	27	104	263	357	869	740	553	283	75	44	3376

	Sex				Total
	F	M	N	U	
2004	160	208	0	8	376
2005	129	168	0	6	303
2006	156	163	0	3	322
2007	176	186	0	4	366
2008	168	229	0	6	403
2009	140	193	0	6	339
2010	149	179	0	0	328
2011	137	190	0	1	328
2012	128	173	1	0	302
2013	133	182	0	0	315
Total	1476	1871	1	34	3382

	Race					Total
	A	B	N	W	U	
2004	145	24	4	129	74	376
2005	122	14	6	92	69	303
2006	143	21	6	98	54	322
2007	160	20	4	93	89	366
2008	179	18	9	115	82	403
2009	145	28	8	91	67	339
2010	135	19	11	75	88	328
2011	147	15	19	87	60	328
2012	135	17	11	75	64	302
2013	127	25	12	74	77	315
Total	1438	201	90	929	724	3382

	2004	2005	2006	2007	2008	2009	2010	2011	2012	2013	Total
Baker	0	1	0	0	1	1	0	0	0	0	3
Benton	6	7	4	5	11	3	5	3	7	7	58
Clackamas	30	21	18	26	35	34	23	32	22	26	267
Clatsop	2	3	3	5	1	1	1	1	2	6	25
Columbia	1	3	3	1	0	2	3	1	0	4	18
Coos	3	1	2	3	2	3	2	3	2	3	24
Crook	2	1	0	2	0	2	0	0	0	0	7
Curry	0	1	1	0	2	2	0	1	1	0	8
Deschutes	5	5	1	6	7	5	4	8	4	5	50
Douglas	9	7	4	1	9	6	7	5	1	3	52
Gilliam	0	0	0	0	0	0	0	1	1	0	2
Grant	0	0	1	1	0	0	0	0	0	0	2
Harney	0	0	0	1	0	0	1	0	0	0	2
Hood River	0	1	0	1	0	1	0	0	1	2	6
Jackson	12	7	7	8	12	6	7	9	5	4	77
Jefferson	1	1	1	0	1	0	1	1	1	2	9
Josephine	7	2	6	6	4	3	3	1	4	4	40
Klamath	2	1	1	3	6	1	6	4	1	3	28
Lake	0	0	0	0	0	0	0	1	0	0	1
Lane	25	19	26	27	18	16	10	15	14	21	191
Lincoln	3	3	0	2	1	5	4	4	2	1	25
Linn	7	6	5	4	6	5	4	1	4	3	45
Malheur	2	3	4	3	5	3	1	2	3	2	28
Marion	33	25	30	24	22	18	25	21	19	24	241
Morrow	1	0	0	1	0	2	0	0	2	0	6
Multnomah	128	96	133	150	160	148	138	157	128	133	1371
Polk	2	3	10	2	7	2	5	1	3	4	39
Sherman	0	0	0	0	0	0	0	0	0	0	0
Tillamook	1	1	0	2	3	0	1	1	2	0	11
Umatilla	8	0	5	3	5	5	2	4	3	3	38
Union	1	1	0	2	3	1	0	0	3	0	11
Wallowa	0	0	0	0	0	0	1	0	0	0	1
Wasco	0	3	0	2	2	1	2	0	1	1	12
Washington	81	75	54	72	74	62	71	45	63	54	651
Wheeler	0	0	0	0	0	0	0	0	0	0	0
Yamhill	4	6	3	3	6	1	1	6	3	0	33
Total	376	303	322	366	403	339	328	328	302	315	3382

Oregon Hepatitis C (acute) Cases
January-September

	Age Group in Years												Total
	00-04	05-09	10-14	15-19	20-24	25-29	30-39	40-49	50-59	60-69	70-79	80+	
2004	0	0	0	0	2	4	3	3	0	1	0	0	13
2005	0	0	0	2	1	5	1	2	3	0	0	0	14
2006	0	0	0	3	3	8	5	4	2	1	0	0	26
2007	0	0	0	0	2	4	2	7	3	0	0	0	18
2008	1	0	0	1	2	3	10	6	2	1	0	0	26
2009	0	0	0	2	1	3	9	2	1	0	0	0	18
2010	0	0	0	0	3	2	3	6	2	0	0	0	16
2011	0	0	0	2	4	5	2	5	1	0	0	0	19
2012	1	0	0	3	4	9	5	5	6	0	0	0	33
2013	0	0	0	1	2	1	5	0	3	0	0	0	12
Total	2	0	0	14	24	44	45	40	23	3	0	0	195

	Sex			Total
	F	M	U	
2004	9	4	1	14
2005	7	7	0	14
2006	19	7	0	26
2007	11	7	0	18
2008	12	14	0	26
2009	5	13	0	18
2010	10	6	0	16
2011	11	8	0	19
2012	13	20	0	33
2013	5	7	0	12
Total	102	93	1	196

	Race					Total
	A	B	N	W	U	
2004	1	0	1	9	3	14
2005	0	0	0	10	4	14
2006	0	0	0	17	9	26
2007	0	0	1	11	6	18
2008	0	0	0	19	7	26
2009	0	0	4	9	5	18
2010	0	0	0	14	2	16
2011	0	0	0	16	3	19
2012	0	0	1	28	4	33
2013	0	0	0	11	1	12
Total	1	0	7	144	44	196

	2004	2005	2006	2007	2008	2009	2010	2011	2012	2013	Total
Baker	0	1	0	0	0	0	0	0	0	0	1
Benton	1	0	0	0	0	0	0	1	2	0	4
Clackamas	1	1	3	2	4	3	2	0	2	5	23
Clatsop	1	0	1	0	2	1	0	0	0	0	5
Columbia	1	0	0	0	1	0	0	0	0	0	2
Coos	0	0	0	0	0	0	0	0	0	0	0
Crook	0	0	0	0	0	0	0	0	0	0	0
Curry	0	0	1	0	0	0	0	0	0	0	1
Deschutes	2	0	3	0	0	0	0	1	2	1	9
Douglas	1	1	2	1	0	0	5	1	3	0	14
Gilliam	0	0	0	0	0	0	0	0	0	0	0
Grant	0	0	0	0	0	0	0	0	0	0	0
Harney	0	0	0	0	0	0	1	0	1	0	2
Hood River	0	0	0	1	0	0	2	0	0	0	3
Jackson	1	4	0	0	1	2	0	0	0	1	9
Jefferson	0	0	0	1	0	1	0	0	0	0	2
Josephine	0	1	0	0	1	1	0	0	1	0	4
Klamath	0	0	0	1	0	4	0	2	1	0	8
Lake	0	0	0	0	0	0	0	0	0	0	0
Lane	0	0	1	4	5	4	4	4	4	3	29
Lincoln	0	0	0	0	1	0	0	0	0	1	2
Linn	0	0	0	0	1	0	0	1	0	0	2
Malheur	0	0	1	0	0	0	0	0	0	0	1
Marion	0	0	0	0	0	0	2	2	6	1	11
Morrow	0	0	1	0	0	0	0	0	0	0	1
Multnomah	4	5	9	6	3	1	0	4	9	0	41
Polk	1	1	2	0	1	0	0	1	0	0	6
Sherman	0	0	0	0	0	0	0	0	0	0	0
Tillamook	0	0	0	0	0	0	0	0	0	0	0
Umatilla	0	0	2	1	1	1	0	1	1	0	7
Union	0	0	0	0	0	0	0	0	0	0	0
Wallowa	0	0	0	0	0	0	0	0	0	0	0
Wasco	0	0	0	1	1	0	0	0	0	0	2
Washington	0	0	0	0	1	0	0	1	1	0	3
Wheeler	0	0	0	0	0	0	0	0	0	0	0
Yamhill	1	0	0	0	3	0	0	0	0	0	4
Total	14	14	26	18	26	18	16	19	33	12	196

Oregon Hepatitis C (chronic) Cases
January-September

	Age Group in Years												Total
	00-04	05-09	10-14	15-19	20-24	25-29	30-39	40-49	50-59	60-69	70-79	80+	
2004	2	0	0	0	4	10	36	84	78	18	0	0	232
2005	2	0	2	14	54	66	302	674	724	124	26	16	2004
2006	38	2	4	48	166	366	1212	2972	2824	460	152	60	8304
2007	42	4	18	72	202	388	1574	3314	3668	642	152	48	10124
2008	34	16	12	58	220	440	1358	3162	3896	812	184	46	10238
2009	12	6	12	66	234	428	1194	2744	3704	944	182	68	9594
2010	4	4	16	58	200	336	988	2250	3272	1032	114	30	8304
2011	0	0	2	72	218	320	936	2180	3212	1230	134	40	8344
2012	0	3	3	31	169	175	447	814	1289	592	73	18	3614
2013	5	2	2	35	144	171	386	546	983	487	58	11	2830
Total	139	37	71	454	1611	2700	8433	18740	23650	6341	1075	337	63588

	Sex					Total
	F	M	N	U		
2004	0	96	132	0	6	234
2005	0	748	1242	0	24	2014
2006	0	3170	5018	0	258	8446
2007	2	3860	6166	0	160	10188
2008	0	4124	5960	0	204	10288
2009	0	3662	5820	0	170	9652
2010	0	3180	5122	0	20	8322
2011	0	3134	5216	0	0	8350
2012	0	1336	2279	0	3	3618
2013	0	1156	1676	1	5	2838
Total	2	24466	38631	1	850	63950

	Race					Total
	A	B	N	W	U	
2004	0	0	4	78	152	234
2005	10	30	6	438	1530	2014
2006	30	64	78	1748	6526	8446
2007	38	104	76	2236	7734	10188
2008	30	118	66	2832	7242	10288
2009	32	94	78	2122	7326	9652
2010	34	184	112	2864	5128	8322
2011	76	176	108	3754	4236	8350
2012	39	78	60	1590	1851	3618
2013	14	23	31	1065	1705	2838
Total	303	871	619	18727	43430	63950

	2004	2005	2006	2007	2008	2009	2010	2011	2012	2013	Total
Baker	0	0	34	48	40	50	26	18	17	15	248
Benton	2	22	90	98	130	126	96	86	33	29	712
Clackamas	54	204	678	620	658	568	388	444	212	243	4069
Clatsop	4	66	174	112	108	92	90	90	41	32	809
Columbia	0	0	80	150	112	94	96	94	43	27	696
Coos	0	40	232	200	264	258	214	180	114	34	1536
Crook	0	30	4	10	14	18	32	26	22	6	162
Curry	0	10	38	76	96	88	76	66	33	16	499
Deschutes	0	42	306	240	320	274	232	316	158	124	2012
Douglas	64	98	394	348	412	302	298	370	113	96	2495
Gilliam	0	0	0	6	4	0	4	6	1	1	22
Grant	0	0	2	6	8	10	8	14	0	4	52
Harney	0	4	4	10	4	8	14	16	5	6	71
Hood River	6	2	10	16	18	16	18	12	12	3	113
Jackson	22	174	578	510	728	608	430	542	196	162	3950
Jefferson	2	0	36	10	74	78	66	82	45	59	452
Josephine	0	30	290	284	242	302	258	256	74	74	1810
Klamath	0	10	180	178	234	228	170	166	55	58	1279
Lake	0	2	44	32	22	26	26	20	7	12	191
Lane	2	112	516	580	970	1030	892	826	359	328	5615
Lincoln	2	40	150	172	190	124	102	156	65	58	1059
Linn	0	52	250	288	318	380	334	284	119	115	2140
Malheur	0	58	210	222	182	204	146	124	52	32	1230
Marion	8	204	956	1084	870	876	834	782	319	242	6175
Morrow	0	2	20	14	12	0	4	18	6	0	76
Multnomah	60	506	1644	3078	2620	2362	2174	2166	990	551	16151
Out Of Sta	0	0	0	0	0	0	0	0	0	4	4
Polk	0	10	96	96	120	132	112	110	40	44	760
Sherman	0	8	4	4	4	2	2	0	3	0	27
State Of O	0	0	0	0	0	0	0	0	2	0	2
Tillamook	2	8	68	48	72	58	52	72	20	15	415
Umatilla	4	32	222	306	252	312	256	138	89	62	1673
Union	0	6	24	20	40	50	34	68	9	11	262
Wallowa	0	2	2	2	12	4	10	12	0	4	48
Wasco	0	10	56	104	50	46	42	48	27	14	397
Washington	2	174	878	962	936	776	654	586	238	275	5481
Wheeler	0	0	2	0	6	6	0	0	2	1	17

(Continued)

Oregon HUS Cases
January-September

	Age Group in Years												Total
	00-04	05-09	10-14	15-19	20-24	25-29	30-39	40-49	50-59	60-69	70-79	80+	
2004	3	2	1	0	0	0	0	0	0	0	0	0	6
2005	5	0	0	0	0	0	0	0	0	0	0	0	5
2006	6	0	2	2	0	1	0	0	0	0	0	0	11
2007	6	2	0	1	0	0	0	0	0	0	0	0	9
2008	4	2	0	1	0	1	0	0	0	0	0	0	8
2009	1	1	1	0	0	0	0	0	1	0	1	0	5
2010	7	3	2	0	0	0	0	0	0	0	0	0	12
2011	4	0	2	0	0	0	0	0	0	1	1	1	9
2012	5	2	5	0	0	0	0	0	1	0	0	0	13
2013	5	3	0	2	2	0	0	1	0	1	0	1	15
Total	46	15	13	6	2	2	0	1	2	2	2	2	93

	Sex			Total
	F	M	U	
2004	4	2	0	6
2005	5	0	0	5
2006	9	2	0	11
2007	6	3	0	9
2008	4	5	0	9
2009	3	2	0	5
2010	5	7	0	12
2011	7	2	0	9
2012	8	5	0	13
2013	9	6	0	15
Total	60	34	0	94

	Race					Total
	A	B	N	W	U	
2004	0	1	0	4	1	6
2005	0	0	0	4	1	5
2006	0	0	0	9	2	11
2007	0	0	0	8	1	9
2008	0	1	0	8	0	9
2009	0	0	0	4	1	5
2010	0	0	0	11	1	12
2011	0	0	0	9	0	9
2012	0	0	0	11	2	13
2013	0	0	0	15	0	15
Total	0	2	0	83	9	94

	2004	2005	2006	2007	2008	2009	2010	2011	2012	2013	Total
Baker	0	0	1	0	0	0	0	0	0	0	1
Benton	0	0	0	0	0	0	1	0	0	0	1
Clackamas	1	0	2	0	0	2	1	0	1	2	9
Clatsop	0	0	0	0	0	0	0	0	0	0	0
Columbia	0	0	0	0	0	0	0	0	0	0	0
Coos	0	0	0	1	0	1	0	0	0	0	2
Crook	2	0	0	0	0	0	0	0	1	1	4
Curry	0	0	0	0	0	0	0	0	0	0	0
Deschutes	0	0	0	0	1	0	0	0	0	0	1
Douglas	0	0	0	2	0	0	2	1	1	0	6
Gilliam	0	0	0	0	0	0	0	0	0	0	0
Grant	0	0	0	0	0	0	0	0	0	0	0
Harney	0	0	0	0	0	0	0	0	0	0	0
Hood River	0	0	0	0	0	0	0	1	0	0	1
Jackson	0	0	0	1	0	0	1	0	0	3	5
Jefferson	0	0	1	0	0	0	0	0	0	0	1
Josephine	0	0	0	0	0	0	0	0	1	0	1
Klamath	0	1	0	0	0	0	0	0	1	2	4
Lake	0	0	0	0	0	0	0	0	0	0	0
Lane	0	0	2	1	1	0	0	0	0	1	5
Lincoln	0	0	0	0	0	1	0	0	0	0	1
Linn	0	1	1	0	0	0	2	1	0	1	6
Malheur	0	0	0	0	1	0	0	0	0	0	1
Marion	0	1	1	1	1	0	0	0	2	3	9
Morrow	0	0	0	1	0	0	0	0	0	0	1
Multnomah	1	0	1	0	3	1	2	0	4	2	14
Polk	0	0	0	0	0	0	0	0	0	0	0
Sherman	0	0	0	1	0	0	0	0	0	0	1
Tillamook	0	0	0	0	0	0	0	0	0	0	0
Umatilla	1	0	0	0	1	0	0	0	0	0	2
Union	1	0	0	0	0	0	0	0	0	0	1
Wallowa	0	0	0	0	0	0	0	0	0	0	0
Wasco	0	0	0	0	0	0	1	0	0	0	1
Washington	0	1	1	1	1	0	2	5	2	0	13
Wheeler	0	0	0	0	0	0	0	0	0	0	0
Yamhill	0	1	1	0	0	0	0	1	0	0	3
Total	6	5	11	9	9	5	12	9	13	15	94

Oregon Legionellosis Cases
January-September

	Age Group in Years												Total
	00-04	05-09	10-14	15-19	20-24	25-29	30-39	40-49	50-59	60-69	70-79	80+	
2004	0	0	0	0	0	0	0	0	2	3	1	0	6
2005	0	0	0	0	0	0	1	1	2	2	2	0	8
2006	0	0	0	0	2	1	2	3	4	3	1	1	17
2007	0	0	0	0	0	0	2	0	1	2	2	0	7
2008	0	0	0	0	0	0	0	8	3	2	1	2	16
2009	0	0	0	0	0	0	1	0	5	6	0	1	13
2010	1	0	0	0	0	0	3	3	2	4	0	0	13
2011	0	0	0	0	0	0	0	2	5	6	0	3	16
2012	0	0	0	0	0	0	1	1	6	5	12	3	28
2013	0	0	0	0	0	0	0	4	5	5	3	0	17
Total	1	0	0	0	2	1	10	22	35	38	22	10	141

	Sex			Total
	F	M	U	
2004	1	5	0	6
2005	2	6	0	8
2006	7	10	0	17
2007	0	7	0	7
2008	4	12	0	16
2009	4	9	0	13
2010	7	6	0	13
2011	9	7	0	16
2012	8	20	0	28
2013	9	8	0	17
Total	51	90	0	141

	Race					Total
	A	B	N	W	U	
2004	0	0	0	5	1	6
2005	0	0	1	6	1	8
2006	0	1	0	14	2	17
2007	0	0	0	5	2	7
2008	0	1	0	12	3	16
2009	0	1	0	10	2	13
2010	0	0	0	12	1	13
2011	0	0	0	13	3	16
2012	0	0	0	25	3	28
2013	0	0	0	16	1	17
Total	0	3	1	118	19	141

	2004	2005	2006	2007	2008	2009	2010	2011	2012	2013	Total
Baker	0	0	0	0	0	0	0	0	0	0	0
Benton	0	0	0	0	0	0	0	0	0	0	0
Clackamas	0	4	5	2	1	5	2	1	6	2	28
Clatsop	0	0	0	0	1	0	0	0	0	0	1
Columbia	1	0	0	0	0	0	0	0	1	0	2
Coos	0	0	0	0	1	0	0	0	0	0	1
Crook	0	0	0	0	0	0	0	0	0	0	0
Curry	0	0	0	0	0	0	0	0	0	0	0
Deschutes	0	0	1	0	0	0	1	0	1	0	3
Douglas	0	0	1	0	0	0	0	0	1	0	2
Gilliam	0	0	0	0	0	0	0	0	0	0	0
Grant	0	0	0	0	0	0	0	0	0	0	0
Harney	0	0	0	0	0	0	0	0	0	0	0
Hood River	0	0	0	0	0	0	0	0	0	0	0
Jackson	0	0	0	0	0	1	1	0	2	1	5
Jefferson	0	0	0	0	0	0	0	0	0	0	0
Josephine	0	0	0	0	0	0	0	0	1	0	1
Klamath	0	0	0	0	0	0	0	0	0	0	0
Lake	0	0	0	0	0	0	0	0	0	0	0
Lane	0	0	3	0	2	0	3	5	3	4	20
Lincoln	0	0	0	0	0	0	0	1	1	0	2
Linn	0	0	0	0	0	1	0	1	0	1	3
Malheur	1	0	0	0	0	0	1	0	0	0	2
Marion	0	0	0	1	1	1	0	1	0	0	4
Morrow	0	0	0	0	0	0	0	0	0	0	0
Multnomah	3	2	6	4	5	3	2	3	6	7	41
Polk	0	0	0	0	0	0	0	1	1	0	2
Sherman	0	0	0	0	0	0	0	0	0	0	0
Tillamook	0	0	0	0	0	0	0	0	0	0	0
Umatilla	0	0	0	0	0	0	0	0	1	0	1
Union	0	0	0	0	0	0	0	0	0	0	0
Wallowa	0	0	0	0	1	0	0	0	1	0	2
Wasco	0	0	0	0	1	0	1	0	1	0	3
Washington	1	2	1	0	3	2	2	3	2	2	18
Wheeler	0	0	0	0	0	0	0	0	0	0	0
Yamhill	0	0	0	0	0	0	0	0	0	0	0
Total	6	8	17	7	16	13	13	16	28	17	141

Oregon Listeriosis Cases
January-September

	Age Group in Years												Total
	00-04	05-09	10-14	15-19	20-24	25-29	30-39	40-49	50-59	60-69	70-79	80+	
2004	2	0	0	0	0	0	1	0	0	0	2	0	5
2005	3	0	0	0	1	0	0	2	0	0	1	3	10
2006	0	0	0	0	0	0	0	0	5	1	1	4	11
2007	0	0	0	0	0	0	0	0	0	0	2	3	5
2008	1	0	0	0	0	1	1	0	0	0	0	1	4
2009	3	0	0	2	0	0	0	0	0	2	7	3	17
2010	2	1	0	0	1	1	1	0	0	3	0	2	11
2011	0	0	0	0	0	0	0	0	1	1	4	1	7
2012	0	0	0	1	1	1	1	1	4	1	3	2	15
2013	1	0	0	0	0	0	0	1	0	0	0	1	3
Total	12	1	0	3	3	3	4	4	10	8	20	20	88

	Sex			Total
	F	M	U	
2004	2	3	0	5
2005	7	3	0	10
2006	5	6	0	11
2007	3	2	0	5
2008	3	1	0	4
2009	10	7	0	17
2010	9	2	0	11
2011	4	3	0	7
2012	9	6	0	15
2013	3	0	0	3
Total	55	33	0	88

	Race					Total
	A	B	N	W	U	
2004	0	0	0	5	0	5
2005	0	0	0	9	1	10
2006	0	0	0	11	0	11
2007	0	0	0	4	1	5
2008	0	0	0	3	1	4
2009	0	0	0	14	3	17
2010	0	0	0	11	0	11
2011	0	0	1	6	0	7
2012	0	1	1	13	0	15
2013	0	0	0	2	1	3
Total	0	1	2	78	7	88

	2004	2005	2006	2007	2008	2009	2010	2011	2012	2013	Total
Baker	0	0	0	0	0	0	0	0	1	0	1
Benton	0	0	0	0	0	0	0	0	0	0	0
Clackamas	3	2	1	1	1	2	3	1	3	0	17
Clatsop	0	2	0	0	0	1	0	0	0	0	3
Columbia	0	0	0	0	0	0	0	0	1	0	1
Coos	0	1	0	0	0	0	0	0	0	0	1
Crook	0	0	0	0	0	0	0	0	0	0	0
Curry	0	0	0	0	0	0	0	0	0	0	0
Deschutes	0	0	0	0	0	0	0	0	1	0	1
Douglas	0	0	0	0	0	0	0	0	1	0	1
Gilliam	0	0	0	0	0	0	0	0	0	0	0
Grant	0	0	0	0	0	0	0	0	0	0	0
Harney	0	0	0	0	0	0	0	0	0	0	0
Hood River	0	0	0	0	0	0	0	0	0	0	0
Jackson	0	0	0	0	0	0	0	0	0	0	0
Jefferson	1	0	0	0	0	0	0	0	0	0	1
Josephine	0	1	0	0	0	0	0	0	0	1	2
Klamath	0	0	0	0	0	0	0	0	0	0	0
Lake	0	0	0	0	0	0	0	0	0	0	0
Lane	0	0	3	0	0	1	1	2	2	0	9
Lincoln	0	0	0	0	0	2	0	1	0	0	3
Linn	0	0	1	1	0	0	0	0	0	0	2
Malheur	0	0	0	0	0	0	0	0	0	0	0
Marion	0	2	4	0	0	1	1	0	0	0	8
Morrow	0	0	0	0	0	0	0	0	0	0	0
Multnomah	1	0	1	1	0	8	2	1	3	0	17
Polk	0	0	0	0	0	0	0	0	0	1	1
Sherman	0	0	0	0	0	0	0	0	0	0	0
Tillamook	0	0	0	0	0	0	0	1	0	0	1
Umatilla	0	0	0	0	0	0	0	0	0	0	0
Union	0	0	0	0	0	0	0	0	1	0	1
Wallowa	0	0	0	0	0	0	0	0	0	0	0
Wasco	0	0	0	1	0	1	0	1	0	0	3
Washington	0	2	1	1	3	1	4	0	2	1	15
Wheeler	0	0	0	0	0	0	0	0	0	0	0
Yamhill	0	0	0	0	0	0	0	0	0	0	0
Total	5	10	11	5	4	17	11	7	15	3	88

Oregon Lyme disease Cases
January-September

	Age Group in Years												Total
	00-04	05-09	10-14	15-19	20-24	25-29	30-39	40-49	50-59	60-69	70-79	80+	
2004	0	3	3	0	3	1	2	5	2	3	0	0	22
2005	1	2	0	0	1	1	2	5	7	2	0	1	22
2006	1	1	1	0	0	1	2	3	2	4	1	1	17
2007	1	1	1	0	1	2	5	6	4	1	0	0	22
2008	0	2	2	5	2	1	2	5	8	3	1	0	31
2009	2	2	0	2	1	3	6	8	4	7	1	0	36
2010	1	2	3	2	1	7	7	5	5	6	3	0	42
2011	2	1	0	2	3	0	5	7	5	4	1	1	31
2012	1	2	0	3	0	2	10	9	5	6	1	1	40
2013	0	4	2	2	4	5	4	7	8	8	1	0	45
Total	9	20	12	16	16	23	45	60	50	44	9	4	308

	Sex			Total
	F	M	U	
2004	15	7	0	22
2005	14	8	0	22
2006	5	12	0	17
2007	15	8	0	23
2008	18	13	0	31
2009	26	10	0	36
2010	27	15	0	42
2011	16	15	0	31
2012	30	10	0	40
2013	25	20	0	45
Total	191	118	0	309

	Race					Total
	A	B	N	W	U	
2004	0	0	0	22	0	22
2005	0	0	0	20	2	22
2006	0	0	0	16	1	17
2007	0	1	0	17	5	23
2008	0	0	0	27	4	31
2009	1	0	1	28	6	36
2010	0	0	0	34	8	42
2011	0	0	1	20	10	31
2012	1	0	0	29	10	40
2013	1	0	1	36	7	45
Total	3	1	3	249	53	309

	2004	2005	2006	2007	2008	2009	2010	2011	2012	2013	Total
Baker	0	0	0	0	0	0	1	0	0	0	1
Benton	1	2	2	1	1	0	5	2	4	2	20
Clackamas	2	1	1	2	1	0	1	2	1	1	12
Clatsop	0	0	0	0	1	0	0	0	0	0	1
Columbia	0	0	1	0	0	0	1	0	1	0	3
Coos	0	0	0	1	0	0	2	0	1	1	5
Crook	0	1	0	0	0	0	0	0	0	0	1
Curry	0	0	0	0	0	1	0	0	0	0	1
Deschutes	0	1	0	0	1	1	1	0	0	4	8
Douglas	4	0	0	1	1	1	3	5	5	4	24
Gilliam	1	0	0	0	0	0	0	0	0	0	1
Grant	0	0	0	0	0	1	0	0	0	1	2
Harney	0	0	0	0	0	0	0	0	0	0	0
Hood River	0	2	0	3	1	2	1	0	1	0	10
Jackson	1	4	1	4	4	6	1	5	5	6	37
Jefferson	0	0	0	0	0	0	0	0	0	0	0
Josephine	5	3	3	3	3	2	2	4	10	8	43
Klamath	0	0	1	0	1	1	0	1	0	1	5
Lake	0	0	1	0	0	0	0	0	0	0	1
Lane	1	1	1	0	2	5	1	4	1	2	18
Lincoln	0	0	0	0	1	0	0	0	0	0	1
Linn	1	0	1	1	0	0	2	1	1	1	8
Malheur	0	0	0	1	0	0	0	0	0	0	1
Marion	1	1	2	1	1	0	1	0	0	0	7
Morrow	1	0	0	0	0	0	0	0	0	0	1
Multnomah	2	2	3	3	9	9	14	6	8	9	65
Polk	0	1	0	0	1	0	1	0	0	1	4
Sherman	0	0	0	0	0	0	0	0	0	0	0
Tillamook	0	1	0	1	0	0	0	0	0	1	3
Umatilla	0	0	0	0	0	1	0	0	0	1	2
Union	0	0	0	0	1	1	1	0	0	0	3
Wallowa	0	0	0	0	0	0	0	0	0	0	0
Wasco	0	0	0	0	1	0	1	0	1	1	4
Washington	2	1	0	0	1	2	3	0	1	0	10
Wheeler	0	0	0	0	0	0	0	0	0	1	1
Yamhill	0	1	0	1	0	3	0	1	0	0	6
Total	22	22	17	23	31	36	42	31	40	45	309

Oregon Malaria Cases
January-September

	Age Group in Years												Total
	00-04	05-09	10-14	15-19	20-24	25-29	30-39	40-49	50-59	60-69	70-79	80+	
2004	0	0	0	3	1	1	4	5	1	0	0	0	15
2005	1	1	0	0	2	0	1	2	1	1	0	0	9
2006	3	0	0	0	2	0	0	1	2	1	0	0	9
2007	0	2	0	1	1	3	1	2	0	2	0	0	12
2008	0	0	0	0	0	0	3	1	0	0	0	0	4
2009	0	0	1	1	0	1	3	3	2	1	0	0	12
2010	0	0	0	0	2	3	3	2	0	1	0	0	11
2011	0	0	1	4	2	3	2	1	2	0	0	0	15
2012	0	0	0	1	3	1	0	1	0	1	0	0	7
2013	0	0	0	1	2	3	3	2	0	1	0	0	12
Total	4	3	2	11	15	15	20	20	8	8	0	0	106

	Sex			Total
	F	M	U	
2004	7	7	1	15
2005	4	5	0	9
2006	3	6	0	9
2007	4	8	0	12
2008	1	3	0	4
2009	4	8	0	12
2010	2	9	0	11
2011	9	6	0	15
2012	3	4	0	7
2013	3	9	0	12
Total	40	65	1	106

	Race					Total
	A	B	N	W	U	
2004	0	5	0	8	2	15
2005	1	2	0	5	1	9
2006	1	3	0	3	2	9
2007	1	4	0	6	1	12
2008	0	2	0	2	0	4
2009	0	2	0	9	1	12
2010	0	4	0	6	1	11
2011	1	2	0	10	2	15
2012	0	1	0	6	0	7
2013	1	4	0	6	1	12
Total	5	29	0	61	11	106

	2004	2005	2006	2007	2008	2009	2010	2011	2012	2013	Total
Baker	0	0	0	0	0	0	0	0	0	0	0
Benton	0	0	1	1	0	0	0	1	0	0	3
Clackamas	0	0	1	1	0	1	1	0	1	2	7
Clatsop	0	0	0	0	0	0	0	0	0	0	0
Columbia	0	0	0	0	0	0	0	0	0	1	1
Coos	0	0	0	0	0	0	0	0	0	0	0
Crook	0	0	0	0	0	0	0	0	1	0	1
Curry	0	0	0	0	0	0	0	0	0	0	0
Deschutes	1	1	1	0	1	1	0	0	0	0	5
Douglas	0	1	0	0	0	0	0	0	0	0	1
Gilliam	0	0	0	0	0	0	0	0	0	0	0
Grant	0	0	0	0	0	0	0	0	0	0	0
Harney	0	0	0	0	0	0	0	0	0	0	0
Hood River	0	0	0	0	0	0	0	0	0	0	0
Jackson	1	0	0	0	0	0	0	0	0	0	1
Jefferson	0	0	0	0	0	0	0	0	0	0	0
Josephine	0	0	0	0	0	1	0	0	0	0	1
Klamath	0	0	0	0	0	0	0	0	0	0	0
Lake	0	0	0	0	0	0	0	0	0	0	0
Lane	1	0	0	0	0	1	0	1	0	1	4
Lincoln	0	0	0	0	0	0	0	0	0	0	0
Linn	1	1	0	0	0	0	0	4	0	0	6
Malheur	0	0	0	0	0	0	0	0	0	0	0
Marion	2	0	0	2	0	0	2	2	1	0	9
Morrow	0	0	0	0	0	0	0	0	0	0	0
Multnomah	3	4	2	7	3	5	4	6	3	7	44
Polk	0	1	0	0	0	0	0	0	0	0	1
Sherman	0	0	0	0	0	0	0	0	0	0	0
Tillamook	0	0	0	0	0	0	0	0	0	0	0
Umatilla	0	0	0	0	0	0	0	0	0	0	0
Union	0	0	0	0	0	0	0	0	0	0	0
Wallowa	0	0	0	0	0	0	0	0	0	0	0
Wasco	0	0	0	0	0	0	0	1	0	0	1
Washington	5	1	4	1	0	3	3	0	1	1	19
Wheeler	0	0	0	0	0	0	0	0	0	0	0
Yamhill	1	0	0	0	0	0	1	0	0	0	2
Total	15	9	9	12	4	12	11	15	7	12	106

Oregon Meningococcal Disease Cases
January-September

	Age Group in Years												Total
	00-04	05-09	10-14	15-19	20-24	25-29	30-39	40-49	50-59	60-69	70-79	80+	
2004	15	7	2	5	6	4	2	3	1	2	1	2	50
2005	8	1	1	10	8	1	2	2	3	0	1	1	38
2006	4	0	0	6	8	2	1	3	4	2	4	1	35
2007	7	2	1	2	0	3	0	0	2	1	1	6	25
2008	11	0	0	3	0	1	0	3	1	2	4	3	28
2009	10	2	1	2	2	0	3	3	0	1	0	3	27
2010	9	0	3	3	4	0	2	0	0	2	0	0	23
2011	8	1	1	1	3	0	1	1	1	2	2	3	24
2012	7	1	0	2	2	0	2	1	2	1	2	0	20
2013	1	0	0	1	1	1	0	1	1	1	2	1	10
Total	80	14	9	35	34	12	13	17	15	14	17	20	280

	Sex			Total
	F	M	U	
2004	21	29	0	50
2005	20	18	0	38
2006	20	15	0	35
2007	14	11	0	25
2008	19	8	1	28
2009	11	16	0	27
2010	5	18	0	23
2011	15	9	0	24
2012	9	11	0	20
2013	4	6	0	10
Total	138	141	1	280

	Race					Total
	A	B	N	W	U	
2004	0	1	1	43	5	50
2005	1	3	1	28	5	38
2006	0	0	0	31	4	35
2007	0	0	1	22	2	25
2008	0	1	0	24	3	28
2009	0	1	0	21	5	27
2010	0	2	2	17	2	23
2011	0	0	0	23	1	24
2012	0	1	0	16	3	20
2013	1	0	0	7	2	10
Total	2	9	5	232	32	280

	2004	2005	2006	2007	2008	2009	2010	2011	2012	2013	Total
Baker	0	0	0	0	0	0	0	0	0	0	0
Benton	2	1	1	0	0	0	1	0	0	0	5
Clackamas	4	2	1	0	1	3	0	0	1	2	14
Clatsop	0	1	1	0	2	0	0	1	2	0	7
Columbia	1	1	0	0	0	0	0	0	0	0	2
Coos	1	2	1	3	0	1	1	1	1	0	11
Crook	1	0	0	0	0	0	0	3	2	0	6
Curry	0	0	0	0	0	0	0	0	1	0	1
Deschutes	2	0	2	2	2	1	2	4	1	0	16
Douglas	8	3	5	0	2	0	7	1	1	0	27
Gilliam	0	0	0	0	0	0	0	0	0	0	0
Grant	0	0	0	0	0	0	0	0	0	0	0
Harney	0	0	0	0	0	0	0	0	0	0	0
Hood River	0	0	0	0	0	0	0	0	0	0	0
Jackson	3	5	2	1	1	1	2	2	0	0	17
Jefferson	0	1	0	0	0	0	0	0	0	0	1
Josephine	2	2	0	0	2	1	2	0	1	0	10
Klamath	2	2	1	0	1	0	0	0	0	0	6
Lake	0	0	0	0	0	0	0	0	0	0	0
Lane	5	4	1	3	2	4	2	2	5	2	30
Lincoln	3	0	0	2	4	0	0	0	0	0	9
Linn	1	1	1	2	0	0	0	0	0	1	6
Malheur	0	0	0	0	0	0	0	1	1	0	2
Marion	4	2	3	2	3	0	2	1	0	2	19
Morrow	1	0	0	0	0	1	0	0	0	0	2
Multnomah	5	6	6	4	4	7	2	5	2	1	42
Polk	1	1	2	0	0	0	1	0	0	0	5
Sherman	0	0	0	0	0	0	0	0	0	0	0
Tillamook	0	0	1	1	0	0	0	0	0	0	2
Umatilla	0	0	0	1	1	0	0	0	0	0	2
Union	0	0	0	0	0	0	0	0	0	0	0
Wallowa	0	0	0	0	0	0	0	0	0	0	0
Wasco	0	0	0	0	0	1	0	0	1	1	3
Washington	4	4	2	0	2	3	1	3	1	1	21
Wheeler	0	0	0	0	0	0	0	0	0	0	0
Yamhill	0	0	5	4	1	4	0	0	0	0	14
Total	50	38	35	25	28	27	23	24	20	10	280

Oregon Pertussis Cases
January-September

	Age Group in Years												Total
	00-04	05-09	10-14	15-19	20-24	25-29	30-39	40-49	50-59	60-69	70-79	80+	
2004	55	26	89	59	11	12	29	24	18	2	3	0	328
2005	161	73	142	70	24	8	41	38	17	9	1	2	586
2006	31	5	5	14	6	3	9	11	3	0	2	0	89
2007	29	15	11	8	3	9	9	6	3	2	0	1	96
2008	61	27	24	7	4	2	8	4	1	2	1	0	141
2009	92	26	31	23	5	6	10	11	6	3	5	0	218
2010	76	42	48	17	2	7	10	11	9	6	2	0	230
2011	91	68	54	9	0	3	6	7	10	3	3	1	255
2012	241	143	240	72	20	13	37	37	12	9	6	2	832
2013	152	75	101	40	8	3	13	21	6	6	2	2	429
Total	989	500	745	319	83	66	172	170	85	42	25	8	3204

	Sex			Total
	F	M	U	
2004	175	158	2	335
2005	309	286	3	598
2006	49	40	2	91
2007	55	40	1	96
2008	69	72	0	141
2009	122	94	3	219
2010	128	102	0	230
2011	131	125	0	256
2012	437	395	0	832
2013	242	187	0	429
Total	1717	1499	11	3227

	Race					Total
	A	B	N	W	U	
2004	2	1	0	272	60	335
2005	22	2	5	490	79	598
2006	4	0	3	74	10	91
2007	3	3	1	79	10	96
2008	0	0	0	128	13	141
2009	0	3	2	179	35	219
2010	3	2	2	201	22	230
2011	1	0	3	225	27	256
2012	14	13	6	708	91	832
2013	3	3	7	372	44	429
Total	52	27	29	2728	391	3227

	2004	2005	2006	2007	2008	2009	2010	2011	2012	2013	Total
Baker	0	0	0	0	0	0	0	0	0	0	0
Benton	150	45	0	1	0	10	4	8	17	13	248
Clackamas	10	35	1	4	9	34	5	37	81	24	240
Clatsop	0	9	0	0	10	1	1	8	18	2	49
Columbia	9	0	0	0	1	1	3	3	8	2	27
Coos	2	5	2	0	0	10	1	0	6	19	45
Crook	0	1	1	0	0	0	0	0	0	0	2
Curry	0	10	0	0	0	0	3	0	0	2	15
Deschutes	2	23	0	0	3	3	6	0	3	6	46
Douglas	22	0	0	0	0	21	4	3	0	3	53
Gilliam	0	0	5	0	0	0	0	0	0	0	5
Grant	0	0	0	0	0	0	0	0	0	0	0
Harney	0	0	0	8	0	0	0	0	2	0	10
Hood River	1	5	1	0	0	1	0	0	6	0	14
Jackson	3	21	8	0	8	11	39	4	3	18	115
Jefferson	0	0	0	0	0	0	0	0	0	1	1
Josephine	4	9	0	0	1	9	17	3	3	45	91
Klamath	2	4	9	0	2	0	0	1	0	53	71
Lake	0	1	0	0	0	0	0	0	0	0	1
Lane	55	114	14	10	16	25	42	41	24	104	445
Lincoln	0	26	0	6	0	0	7	1	6	1	47
Linn	23	20	2	13	1	12	9	2	17	17	116
Malheur	0	0	0	0	0	0	0	0	11	1	12
Marion	9	113	5	0	32	13	16	28	45	51	312
Morrow	0	0	4	0	0	0	0	0	1	0	5
Multnomah	14	81	21	20	31	42	51	90	231	44	625
Out Of Sta	0	0	0	0	0	0	0	0	0	1	1
Polk	5	14	0	2	4	1	5	5	24	5	65
Sherman	0	0	0	0	0	0	0	0	0	0	0
Tillamook	0	0	1	0	0	0	2	0	1	0	4
Umatilla	1	2	1	0	1	2	0	1	19	1	28
Union	1	1	0	13	0	4	0	0	3	2	24
Wallowa	0	1	0	0	1	0	0	0	0	0	2
Wasco	1	3	1	0	0	1	0	2	1	1	10
Washington	21	43	15	15	16	15	11	18	275	11	440
Wheeler	0	0	0	0	0	0	0	0	0	0	0
Yamhill	0	12	0	4	5	3	4	1	27	2	58
Total	335	598	91	96	141	219	230	256	832	429	3227

Oregon Salmonella Cases
January-September

	Age Group in Years												Total
	00-04	05-09	10-14	15-19	20-24	25-29	30-39	40-49	50-59	60-69	70-79	80+	
2004	48	26	16	26	27	28	38	44	34	16	18	28	349
2005	60	27	18	20	19	25	53	43	19	19	9	16	328
2006	58	24	17	12	26	32	36	41	31	25	18	8	328
2007	47	19	9	17	14	19	27	34	27	15	14	10	252
2008	73	23	15	19	28	24	38	37	29	32	12	13	343
2009	68	29	19	23	23	25	36	43	38	20	18	9	351
2010	57	28	22	17	32	31	53	59	54	33	21	14	421
2011	64	10	11	19	22	18	37	29	33	16	13	11	283
2012	46	17	10	15	25	16	45	37	30	28	19	14	302
2013	44	16	16	31	26	25	40	29	34	31	17	7	316
Total	565	219	153	199	242	243	403	396	329	235	159	130	3273

	Sex			Total
	F	M	U	
2004	193	158	0	351
2005	173	153	2	328
2006	175	153	0	328
2007	123	128	1	252
2008	182	161	0	343
2009	188	163	0	351
2010	222	199	0	421
2011	152	132	0	284
2012	159	143	0	302
2013	166	150	0	316
Total	1733	1540	3	3276

	Race					Total
	A	B	N	W	U	
2004	30	6	2	269	44	351
2005	18	2	5	261	42	328
2006	14	7	4	254	49	328
2007	5	3	3	217	24	252
2008	5	4	3	285	46	343
2009	19	10	5	282	35	351
2010	14	11	6	353	37	421
2011	12	3	5	238	26	284
2012	7	5	3	255	32	302
2013	10	5	4	257	40	316
Total	134	56	40	2671	375	3276

	2004	2005	2006	2007	2008	2009	2010	2011	2012	2013	Total
Baker	3	0	1	1	0	2	0	2	1	2	12
Benton	1	8	8	9	8	10	7	3	2	5	61
Clackamas	60	34	17	29	34	34	27	35	33	33	336
Clatsop	0	5	4	1	3	1	3	1	3	4	25
Columbia	3	3	2	3	3	1	0	6	1	3	25
Coos	4	5	3	5	6	6	4	5	4	4	46
Crook	4	2	2	2	1	0	0	4	1	8	24
Curry	0	0	1	0	1	3	2	0	0	1	8
Deschutes	8	11	10	14	10	6	15	12	14	16	116
Douglas	6	9	8	8	13	7	86	5	12	5	159
Gilliam	0	0	0	0	0	0	0	0	0	0	0
Grant	0	0	0	0	0	0	0	0	0	0	0
Harney	1	1	1	0	1	1	0	0	3	1	9
Hood River	1	0	1	2	3	1	3	5	2	3	21
Jackson	20	16	11	23	21	25	18	8	13	13	168
Jefferson	1	1	2	0	2	0	3	5	0	2	16
Josephine	4	5	9	3	8	4	12	2	6	3	56
Klamath	1	3	4	4	3	5	11	6	5	3	45
Lake	0	0	0	1	1	3	1	1	1	0	8
Lane	29	43	27	18	26	26	31	31	35	29	295
Lincoln	5	4	2	3	3	3	2	1	3	3	29
Linn	12	6	18	8	17	13	10	12	10	8	114
Malheur	3	2	3	5	4	2	3	0	3	3	28
Marion	39	29	33	20	24	33	33	23	32	32	298
Morrow	1	3	1	0	1	0	0	2	2	1	11
Multnomah	51	62	67	48	55	84	78	58	56	52	611
Polk	5	6	5	3	5	4	3	5	6	17	59
Sherman	0	0	0	0	0	0	1	0	0	1	2
Tillamook	1	1	1	0	2	1	3	0	2	1	12
Umatilla	20	12	6	3	12	8	6	4	3	9	83
Union	4	1	2	2	2	3	1	2	2	1	20
Wallowa	0	0	0	0	0	0	0	2	0	0	2
Wasco	2	4	7	3	4	4	4	1	2	4	35
Washington	50	42	58	31	59	53	49	38	36	33	449
Wheeler	0	0	0	0	0	0	0	0	0	0	0
Yamhill	12	10	14	3	11	8	5	5	9	16	93
Total	351	328	328	252	343	351	421	284	302	316	3276

Oregon Shigella Cases
January-September

	Age Group in Years												Total
	00-04	05-09	10-14	15-19	20-24	25-29	30-39	40-49	50-59	60-69	70-79	80+	
2004	10	7	2	5	3	4	10	13	0	2	2	0	58
2005	14	12	3	7	3	7	13	18	20	3	3	0	103
2006	15	9	4	3	4	9	16	14	12	10	6	2	104
2007	9	7	2	3	4	4	13	6	10	0	2	0	60
2008	17	9	6	1	2	7	9	5	4	4	1	0	65
2009	11	7	3	2	3	3	7	2	3	1	0	0	42
2010	4	8	1	0	0	4	9	6	6	4	1	0	43
2011	9	3	0	6	3	7	4	4	4	2	0	1	43
2012	6	8	4	7	5	4	11	9	8	5	1	1	69
2013	7	8	2	1	1	4	4	5	5	6	0	0	43
Total	102	78	27	35	28	53	96	82	72	37	16	4	630

	Sex			Total
	F	M	U	
2004	30	28	0	58
2005	54	49	0	103
2006	57	50	0	107
2007	29	31	0	60
2008	36	32	0	68
2009	22	20	0	42
2010	23	21	0	44
2011	29	14	0	43
2012	22	47	0	69
2013	16	27	0	43
Total	318	319	0	637

	Race					Total
	A	B	N	W	U	
2004	6	1	0	37	14	58
2005	0	1	0	67	35	103
2006	2	1	0	87	17	107
2007	2	2	0	48	8	60
2008	0	1	2	52	13	68
2009	5	0	1	29	7	42
2010	1	2	2	31	8	44
2011	1	1	1	34	6	43
2012	1	2	0	49	17	69
2013	0	1	1	34	7	43
Total	18	12	7	468	132	637

	2004	2005	2006	2007	2008	2009	2010	2011	2012	2013	Total
Baker	0	0	0	0	0	0	0	0	0	0	0
Benton	1	4	8	0	1	2	2	2	0	1	21
Clackamas	4	6	1	2	4	2	3	4	1	3	30
Clatsop	5	1	0	0	0	1	0	0	12	0	19
Columbia	4	0	0	0	0	0	0	0	0	0	4
Coos	0	0	1	0	0	0	0	0	0	0	1
Crook	0	0	0	0	0	0	0	0	0	0	0
Curry	0	0	0	0	0	0	0	0	0	0	0
Deschutes	2	1	0	2	2	4	1	0	0	0	12
Douglas	0	26	0	0	0	0	1	0	0	1	28
Gilliam	0	0	0	0	0	0	0	0	0	0	0
Grant	0	0	0	0	0	0	0	0	0	0	0
Harney	0	0	0	0	0	0	0	1	0	0	1
Hood River	2	0	2	1	1	4	1	0	0	0	11
Jackson	3	3	2	3	5	1	1	1	1	2	22
Jefferson	1	0	0	5	2	1	2	0	0	0	11
Josephine	0	0	2	0	1	0	0	0	0	0	3
Klamath	0	1	1	0	2	0	0	0	0	0	4
Lake	0	0	0	0	0	0	0	0	0	0	0
Lane	3	4	5	4	6	3	6	7	5	1	44
Lincoln	0	1	0	0	0	0	1	1	0	0	3
Linn	0	4	1	1	0	2	0	2	0	5	15
Malheur	0	1	1	0	0	0	0	0	0	0	2
Marion	6	14	13	1	5	9	11	10	8	8	85
Morrow	0	0	0	2	0	0	0	0	0	0	2
Multnomah	20	18	18	25	16	6	6	11	28	17	165
Polk	0	2	1	1	6	0	0	0	1	0	11
Sherman	0	0	0	0	0	0	0	0	0	0	0
Tillamook	0	0	0	0	0	0	0	0	0	0	0
Umatilla	0	1	1	1	8	0	0	0	0	0	11
Union	0	1	0	0	2	1	1	1	2	0	8
Wallowa	1	0	0	0	0	0	0	0	0	0	1
Warm Sprin	0	0	0	0	0	0	1	0	0	0	1
Wasco	0	3	2	1	0	0	0	0	0	0	6
Washington	4	12	14	10	7	6	6	3	11	5	78
Wheeler	0	0	0	0	0	0	0	0	0	0	0
Yamhill	2	0	34	1	0	0	1	0	0	0	38
Total	58	103	107	60	68	42	44	43	69	43	637

For a breakdown of Tuberculosis by county and quarter of report in 2012 please visit

<http://public.health.oregon.gov/DiseasesConditions/CommunicableDisease/Tuberculosis/Documents/cascount.pdf>

Oregon Vibrio parahaemolytic Cases
January-September

	Age Group in Years												Total
	00-04	05-09	10-14	15-19	20-24	25-29	30-39	40-49	50-59	60-69	70-79	80+	
2004	0	0	0	1	1	2	3	2	2	0	1	0	12
2005	0	0	0	0	0	1	1	2	0	1	1	1	7
2006	0	0	0	0	1	2	5	3	4	3	0	1	19
2007	0	0	0	0	1	2	2	2	1	0	0	0	8
2008	0	0	0	0	0	2	3	4	1	1	0	1	12
2009	0	0	0	1	1	1	5	3	4	0	1	1	17
2010	0	0	0	0	2	1	5	6	3	5	2	2	26
2011	0	0	0	0	0	1	2	1	0	1	0	0	5
2012	0	0	0	0	1	1	3	3	4	3	1	1	17
2013	0	0	0	0	1	5	7	2	4	6	0	0	25
Total	0	0	0	2	8	18	36	28	23	20	6	7	148

	Sex			Total
	F	M	U	
2004	2	10	0	12
2005	2	5	0	7
2006	7	12	0	19
2007	1	7	0	8
2008	3	9	0	12
2009	2	15	0	17
2010	6	20	0	26
2011	0	5	0	5
2012	5	12	0	17
2013	7	18	0	25
Total	35	113	0	148

	Race					Total
	A	B	N	W	U	
2004	0	1	0	11	0	12
2005	0	0	0	7	0	7
2006	0	0	0	16	3	19
2007	0	0	1	5	2	8
2008	1	0	0	10	1	12
2009	0	0	0	14	3	17
2010	1	0	1	23	1	26
2011	0	0	0	5	0	5
2012	0	1	0	16	0	17
2013	0	0	0	22	3	25
Total	2	2	2	129	13	148

	2004	2005	2006	2007	2008	2009	2010	2011	2012	2013	Total
Baker	0	0	0	0	0	0	0	0	0	0	0
Benton	0	0	1	0	2	1	0	0	0	8	12
Clackamas	0	0	3	0	0	4	3	1	2	4	17
Clatsop	0	0	0	0	2	1	0	1	0	0	4
Columbia	0	0	0	0	1	0	0	0	0	1	2
Coos	0	0	0	0	0	1	1	0	1	2	5
Crook	0	0	0	0	0	0	2	0	0	0	2
Curry	0	0	0	0	0	0	0	0	0	0	0
Deschutes	2	2	1	0	0	3	4	0	0	1	13
Douglas	0	0	0	0	0	0	0	0	0	1	1
Gilliam	0	0	0	0	0	0	0	0	0	0	0
Grant	0	0	0	0	0	0	0	0	0	0	0
Harney	0	0	0	0	0	0	0	0	0	0	0
Hood River	0	0	0	0	0	1	0	0	0	0	1
Jackson	0	0	1	0	0	0	1	0	0	0	2
Jefferson	0	0	0	0	0	0	0	0	0	0	0
Josephine	0	1	0	1	0	0	0	0	0	0	2
Klamath	3	0	0	0	0	0	0	0	0	0	3
Lake	0	0	0	0	0	0	0	0	0	0	0
Lane	1	1	7	1	0	1	0	0	1	3	15
Lincoln	0	0	0	0	0	0	0	0	0	0	0
Linn	0	0	1	0	0	0	1	0	0	1	3
Malheur	0	0	0	0	0	0	0	0	0	0	0
Marion	0	0	0	0	1	1	2	0	0	0	4
Morrow	0	0	0	0	0	0	0	0	0	0	0
Multnomah	5	1	4	3	3	3	7	0	8	2	36
Polk	0	0	0	0	0	0	1	0	0	0	1
Sherman	0	0	0	0	0	0	0	0	0	0	0
Tillamook	0	0	0	0	0	0	0	0	0	0	0
Umatilla	0	0	0	0	0	0	1	0	0	0	1
Union	0	0	0	0	0	0	0	0	0	0	0
Wallowa	0	0	0	0	0	0	0	0	0	0	0
Wasco	0	0	0	0	0	0	0	0	0	0	0
Washington	1	2	1	3	3	1	2	3	5	2	23
Wheeler	0	0	0	0	0	0	0	0	0	0	0
Yamhill	0	0	0	0	0	0	1	0	0	0	1
Total	12	7	19	8	12	17	26	5	17	25	148

Oregon West Nile Cases
January-September

	Age Group in Years												Total
	00-04	05-09	10-14	15-19	20-24	25-29	30-39	40-49	50-59	60-69	70-79	80+	
2004	0	0	1	0	2	0	0	2	0	0	0	0	5
2005	0	0	0	0	0	2	3	3	1	0	0	0	9
2006	0	0	2	7	2	3	15	12	15	7	7	1	71
2007	0	0	0	1	2	1	3	4	10	3	2	1	27
2008	0	0	0	1	0	1	4	1	4	4	1	0	16
2009	0	0	0	1	1	2	1	2	3	2	0	1	13
2010	0	0	0	0	0	0	0	0	0	0	0	0	0
2011	0	0	0	0	0	0	0	0	0	0	0	0	0
2012	0	0	0	1	0	0	0	1	3	2	3	2	12
2013	0	0	1	1	1	0	2	3	3	2	2	0	15
Total	0	0	4	12	8	9	28	28	39	20	15	5	168

	Sex			Total
	F	M	U	
2004	3	2	0	5
2005	5	4	0	9
2006	42	29	0	71
2007	12	15	0	27
2008	9	7	0	16
2009	8	5	0	13
2010	0	0	0	0
2011	0	0	0	0
2012	3	9	0	12
2013	9	6	0	15
Total	91	77	0	168

	Race					Total
	A	B	N	W	U	
2004	0	0	0	3	2	5
2005	0	0	0	8	1	9
2006	0	0	0	62	9	71
2007	1	0	1	25	0	27
2008	0	0	0	15	1	16
2009	0	0	0	12	1	13
2010	0	0	0	0	0	0
2011	0	0	0	0	0	0
2012	0	0	0	11	1	12
2013	0	0	1	11	3	15
Total	1	0	2	147	18	168

	2004	2005	2006	2007	2008	2009	2010	2011	2012	2013	Total
Baker	0	0	9	2	0	0	0	0	0	0	11
Benton	1	1	0	0	0	0	0	0	0	1	3
Clackamas	0	0	0	1	0	0	0	0	0	0	1
Clatsop	0	0	0	0	0	0	0	0	0	0	0
Columbia	0	0	0	0	0	0	0	0	0	0	0
Coos	0	0	0	0	0	0	0	0	1	0	1
Crook	0	0	0	0	0	0	0	0	0	0	0
Curry	0	0	0	0	0	0	0	0	0	0	0
Deschutes	0	0	1	0	0	0	0	0	1	0	2
Douglas	0	0	1	1	1	0	0	0	0	0	3
Gilliam	0	0	0	0	0	0	0	0	0	0	0
Grant	0	0	0	0	0	0	0	0	0	0	0
Harney	0	0	6	0	0	0	0	0	0	2	8
Hood River	0	0	0	0	0	0	0	0	0	0	0
Jackson	1	1	0	0	0	0	0	0	0	0	2
Jefferson	0	0	0	0	0	0	0	0	0	0	0
Josephine	0	0	0	0	0	0	0	0	0	0	0
Klamath	0	0	0	2	1	0	0	0	0	0	3
Lake	0	0	0	0	0	0	0	0	0	0	0
Lane	0	1	0	1	0	0	0	0	1	1	4
Lincoln	0	0	0	0	0	0	0	0	0	0	0
Linn	0	0	0	0	0	0	0	0	0	1	1
Malheur	2	4	51	11	14	10	0	0	8	10	110
Marion	0	1	0	1	0	0	0	0	0	0	2
Morrow	0	0	0	0	0	1	0	0	0	0	1
Multnomah	1	0	1	1	0	1	0	0	1	0	5
Polk	0	1	0	1	0	0	0	0	0	0	2
Sherman	0	0	0	0	0	0	0	0	0	0	0
Tillamook	0	0	0	0	0	0	0	0	0	0	0
Umatilla	0	0	1	0	0	1	0	0	0	0	2
Union	0	0	1	5	0	0	0	0	0	0	6
Wallowa	0	0	0	1	0	0	0	0	0	0	1
Wasco	0	0	0	0	0	0	0	0	0	0	0
Washington	0	0	0	0	0	0	0	0	0	0	0
Wheeler	0	0	0	0	0	0	0	0	0	0	0
Yamhill	0	0	0	0	0	0	0	0	0	0	0
Total	5	9	71	27	16	13	0	0	12	15	168

Oregon Yersinia Cases
January-September

	Age Group in Years												Total
	00-04	05-09	10-14	15-19	20-24	25-29	30-39	40-49	50-59	60-69	70-79	80+	
2004	1	1	0	0	3	0	1	1	3	0	0	0	10
2005	1	1	0	0	0	0	2	5	1	2	1	1	14
2006	4	3	0	0	0	2	1	1	0	3	0	0	14
2007	7	0	0	1	0	0	1	0	2	0	2	2	15
2008	5	0	1	1	0	1	1	3	1	2	0	0	15
2009	3	3	1	0	1	1	1	3	1	1	0	1	16
2010	2	3	0	0	1	1	1	1	3	3	1	0	16
2011	2	0	0	1	0	1	0	2	5	3	1	0	15
2012	4	0	1	0	3	0	1	1	3	1	3	0	17
2013	1	4	0	2	4	3	1	4	0	3	0	1	23
Total	30	15	3	5	12	9	10	21	19	18	8	5	155

	Sex			Total
	F	M	U	
2004	7	3	0	10
2005	10	4	0	14
2006	5	9	0	14
2007	3	12	0	15
2008	7	8	0	15
2009	10	6	0	16
2010	10	6	0	16
2011	7	8	0	15
2012	5	12	0	17
2013	13	10	0	23
Total	77	78	0	155

	Race					Total
	A	B	N	W	U	
2004	1	0	0	8	1	10
2005	2	0	0	11	1	14
2006	1	0	0	13	0	14
2007	1	0	0	11	3	15
2008	2	0	0	12	1	15
2009	4	0	0	12	0	16
2010	1	0	0	11	4	16
2011	0	1	0	14	0	15
2012	0	0	0	13	4	17
2013	2	0	0	18	3	23
Total	14	1	0	123	17	155

	2004	2005	2006	2007	2008	2009	2010	2011	2012	2013	Total
Baker	0	0	0	0	0	0	0	0	0	1	1
Benton	0	0	0	0	0	0	0	0	0	0	0
Clackamas	1	2	1	4	9	3	3	2	2	1	28
Clatsop	1	0	0	0	0	0	1	0	0	0	2
Columbia	1	0	0	0	1	0	0	0	0	0	2
Coos	0	0	0	1	0	0	0	0	1	1	3
Crook	0	0	0	0	0	0	1	0	0	0	1
Curry	0	0	0	0	1	1	0	0	0	1	3
Deschutes	0	0	2	0	0	1	0	1	0	0	4
Douglas	0	0	0	0	0	0	0	0	0	0	0
Gilliam	0	0	0	0	0	0	0	0	0	0	0
Grant	0	0	0	0	0	0	0	0	0	0	0
Harney	0	0	0	0	0	0	0	0	0	0	0
Hood River	0	0	0	0	0	0	0	0	0	0	0
Jackson	1	0	0	0	0	0	1	0	2	1	5
Jefferson	0	0	0	0	0	0	0	0	0	0	0
Josephine	0	0	0	0	0	0	0	0	1	0	1
Klamath	0	0	2	0	0	0	0	0	0	0	2
Lake	0	0	0	0	0	0	0	0	0	0	0
Lane	2	1	1	5	0	2	0	1	0	5	17
Lincoln	0	0	0	0	0	0	0	0	0	0	0
Linn	0	0	1	0	0	0	0	1	0	1	3
Malheur	0	0	0	0	0	0	1	0	0	0	1
Marion	0	0	1	0	0	0	0	1	3	1	6
Morrow	0	1	0	0	0	0	0	0	0	0	1
Multnomah	4	6	4	3	3	5	2	3	5	6	41
Polk	0	0	0	0	0	0	0	0	0	0	0
Sherman	0	1	0	0	0	0	0	0	0	0	1
Tillamook	0	0	0	0	0	0	0	0	0	0	0
Umatilla	0	1	1	1	0	1	1	5	0	0	10
Union	0	0	1	0	0	0	0	0	0	1	2
Wallowa	0	0	0	0	0	0	0	0	0	0	0
Wasco	0	0	0	0	0	0	0	0	0	0	0
Washington	0	1	0	1	1	3	4	1	3	4	18
Wheeler	0	0	0	0	0	0	0	0	0	0	0
Yamhill	0	1	0	0	0	0	2	0	0	0	3
Total	10	14	14	15	15	16	16	15	17	23	155