

# FLU BITES

## Oregon's Weekly Surveillance Report for Influenza and other Respiratory Viruses



Published January 7, 2011

### **Summary**

- Influenza activity has begun to increase during Weeks 50-52 (Dec. 12, 2010 – Jan. 1, 2011) in Oregon, although we are still below the epidemic threshold for influenza-like illness (ILI) activity.
- Seven positive influenza A/H3 specimens were detected at the Oregon State Public Health Laboratory during this time period.
- There have been two influenza-associated hospitalizations reported within the Portland Tri-County area since the beginning of the season (October 1, 2010).
- RSV season in Oregon began the week of December 26, 2010-January 1, 2011. RSV percent positivity\* was 26% for the week ending January 1, 2011.

\* Percent positivity based on data from Oregon's RSV Laboratory Surveillance System (number of positive RSV tests ÷ number of RSV tests performed)

### **Laboratory-Confirmed Influenza Associated Hospitalizations**

Laboratory-confirmed influenza-associated hospitalizations are reported by hospitals in the Portland Tri-County area (Clackamas, Multnomah, and Washington Counties) for all ages. Patients must be admitted to the hospital and have tested positive for influenza by rapid test, direct or indirect fluorescent antibody test, culture, PCR, or serology.

Two influenza-associated hospitalizations have been reported since we began conducting official influenza surveillance this season; one occurred during Week 50 and the second during Week 51. Both patients tested positive by PCR for influenza A/H3. We encourage submissions of specimens to the Oregon State Public Health Laboratory for patients hospitalized with influenza-like illness in the Portland Tri-County area, even if rapid influenza tests are negative or have not been performed. To report an influenza-associated hospitalization in these three counties, please contact Rachel Linz at 971-673-1111 or [Rachel.S.Linz@state.or.us](mailto:Rachel.S.Linz@state.or.us).

### **Outpatient Influenza-like Illness (ILI)**

#### **ILINet: Oregon's Outpatient Influenza-like Illness Surveillance Network**

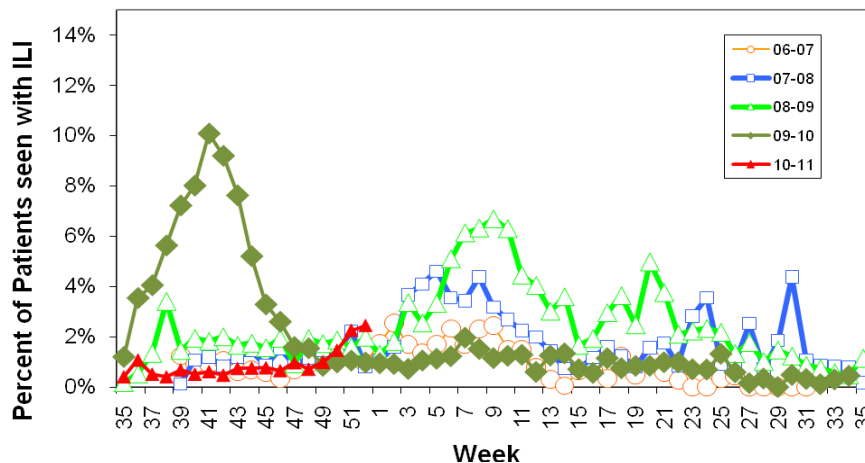
Oregon's outpatient influenza-like illness network is comprised of 30 voluntary healthcare providers from all across Oregon who report the number of patients with influenza-like

illness (ILI) as well as total number of patient visits for each week during the surveillance season.

ILI is defined as fever ( $\geq 100^{\circ}\text{F}$ ) and cough or sore throat. The number of patient visits and the percent of patients with ILI for the last 3 weeks are presented below. The average ILI reported during influenza weeks (defined as percent positive for influenza at the Oregon State Public Health Laboratory  $>10\%$ ) over the previous three seasons is 3.52% (although this figure is skewed upward by the H1N1 pandemic of 2009). The percent of outpatients seen with ILI was 2.25% and 2.44% for weeks 51 and 52, respectively, which is below the seasonal average but represents an increase from previous weeks.

	Number of Patients Visits	Percent Patients with ILI	Number of Provider Reports
<b>Week ending January 1st</b>	1842	2.44%	18
<b>Week ending December 25th</b>	1908	2.25%	17
<b>Week ending December 18th</b>	2388	1.47%	17

### Oregon Outpatient Influenza-Like Illness Surveillance Network (ILINet)

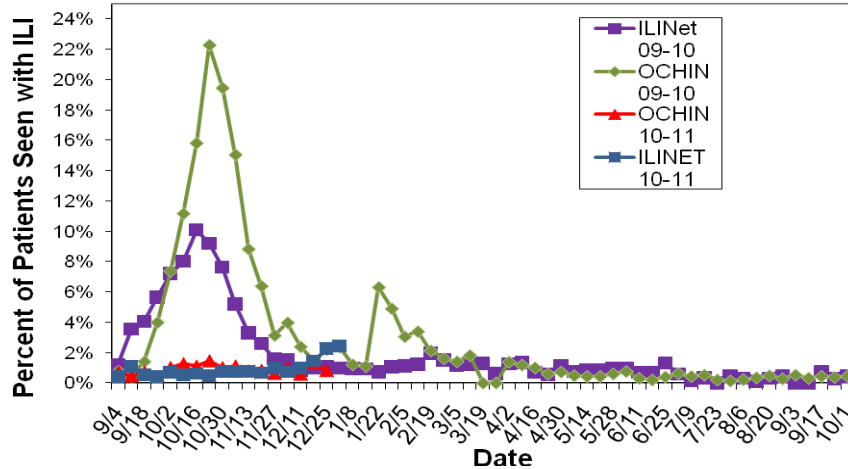


### OCHIN Influenza-like Illness Surveillance

Oregon Public Health Division also receives discharge diagnoses data from OCHIN Inc., a collaborative comprising 22 member organizations of federally qualified health centers (FQHC) and rural health centers in Oregon, representing 103 clinics throughout the state. OCHIN reports of ILI are one week behind our other syndromic surveillance system reports. The percent of OCHIN patients seen with ILI was 1.34% and 0.81% during weeks 50 and 51, respectively.

For a more detailed look at our Influenza Sentinel Provider Surveillance System data check out: <http://egov.oregon.gov/DHS/ph/acd/flu/flusurv.shtml#stats>.

## Oregon Outpatient Influenza-Like Illness (ILI) Surveillance



### **Laboratory Surveillance**

The Oregon State Public Health Laboratory (OSPHL) is performing influenza typing and sub-typing by PCR on specimens from the following groups of patients:

- Patients seen by Oregon Sentinel providers (ILINet & Influenza Incidence Surveillance Project (IISP)).
- Patients hospitalized with influenza-like illness in the Portland Tri-County area (Multnomah, Clackamas and Washington counties) as part of a CDC-funded study. We encourage submission of specimens even if rapid influenza tests are negative or have not been performed.
- Patients identified as part of an outbreak of respiratory illness. Please report clusters of respiratory illness to the on-call ACDP epidemiologist (971-673-1111), who will then make decisions about the need for testing at the OSPHL.

Since the start of official influenza surveillance in week 39 (October 1, 2010), the OSPHL has identified seven positive specimens, all of which were sub-typed by PCR as influenza A/H3. Three specimens were collected during week 50 (Dec 12-18) and four specimens were collected during week 51 (Dec 19-25). Positive specimens have come from patients in the Portland Metro region, Northeast Oregon/Gorge region, and Southern Oregon.

For additional information on influenza testing guidelines for the 2010-11 season, please see: [http://egov.oregon.gov/DHS/ph/acd/reporting/guideln/test\\_guideline2010.pdf](http://egov.oregon.gov/DHS/ph/acd/reporting/guideln/test_guideline2010.pdf)

### **Additional resources:**

For more information on seasonal and 2009 H1N1 influenza in Oregon please see:

<http://www.flu.oregon.gov/>.

Oregon influenza surveillance: <http://egov.oregon.gov/DHS/ph/acd/flu/surveil.shtml>

CDC Weekly Surveillance Report: <http://www.cdc.gov/flu/weekly/>