

Published November 04, 2011

Summary

- During Week 43 (October 23-29, 2011) 0 specimens tested positive for influenza virus at OSPHL. Two positive specimens have been identified so far this season, both typed as influenza A/H3.
- No influenza-related hospitalizations* have been reported for Week 43.
- Influenza activity is low across the U.S. In Week 43, 31 states (including Oregon) reported no influenza activity and 19 states reported sporadic activity.
- The level of influenza-like illness (ILI) detected by Oregon's outpatient ILI network was below the national baseline in Week 43.
- Respiratory syncytial virus (RSV) activity is low in Oregon, with 4% of specimens testing positive** during Week 43.

* Based on hospitalization surveillance in Clackamas, Multnomah, and Washington counties only.

**Percent positivity based on data from Oregon's RSV Laboratory Surveillance System (number of positive RSV tests ÷ number of RSV tests performed)

Laboratory-Confirmed Influenza Associated Hospitalizations:

Laboratory-confirmed influenza-associated hospitalizations are reported by hospitals in the Portland Tri-County area (Clackamas, Multnomah, and Washington counties) for all ages where patients are admitted to the hospital and have tested positive for influenza by rapid test, direct or indirect fluorescent antibody test, culture, PCR, or serology.

No influenza-related hospitalizations were reported during Week 43. Two influenza-related hospitalizations have been reported so far during the 2011-2012 season.

Outpatient Influenza-like Illness (ILI):

ILINet: Oregon's Outpatient Influenza-like Illness Surveillance Network

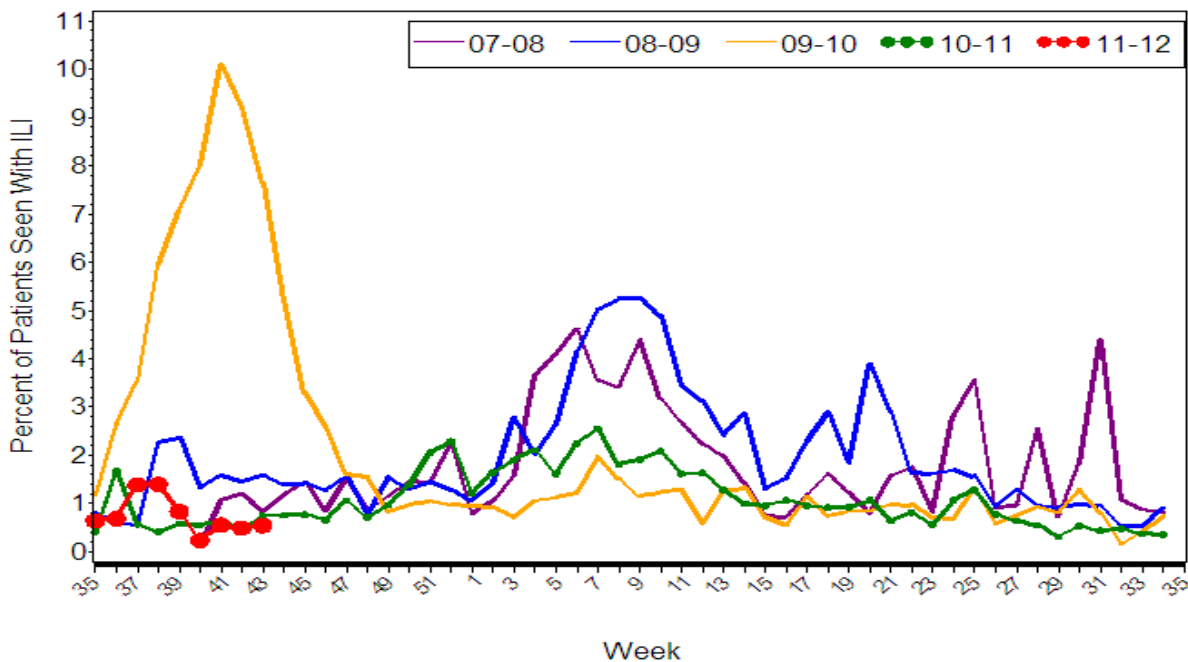
Oregon's outpatient influenza-like illness network is comprised of 25 voluntary healthcare providers from all across Oregon who report the number of patients with influenza-like illness (ILI) as well as total number of patient visits for each week during the surveillance season.

ILI is defined as fever ($\geq 100^{\circ}\text{F}$) and cough or sore throat. The number of patient visits and the percent of patients with ILI for the last 3 weeks are presented below. The average ILI reported during influenza weeks (defined as percent positive for influenza at the Oregon State Public Health Laboratory $>10\%$) over the previous three seasons is 3.27% (although this figure is skewed upward by the H1N1 pandemic of 2009).

The percent of outpatients seen with ILI for Week 43 was 0.55%, which is below the seasonal average.

2011-2012 Flu Season	Number of Patient Visits	Percent Patients with ILI	Number of Provider Reports
Week ending October 29 th	2000	0.55%	10
Week ending October 22 nd	2832	0.49%	14
Week ending October 15 th	3026	0.56%	15

Oregon Outpatient Influenza-Like Illness Surveillance Network (ILINet) 04NOV11
 Percent of Outpatients with Influenza-like Illness (ILI)
 2007-2008, 2008-2009, 2009-2010, 2010-2011, 2011-2012

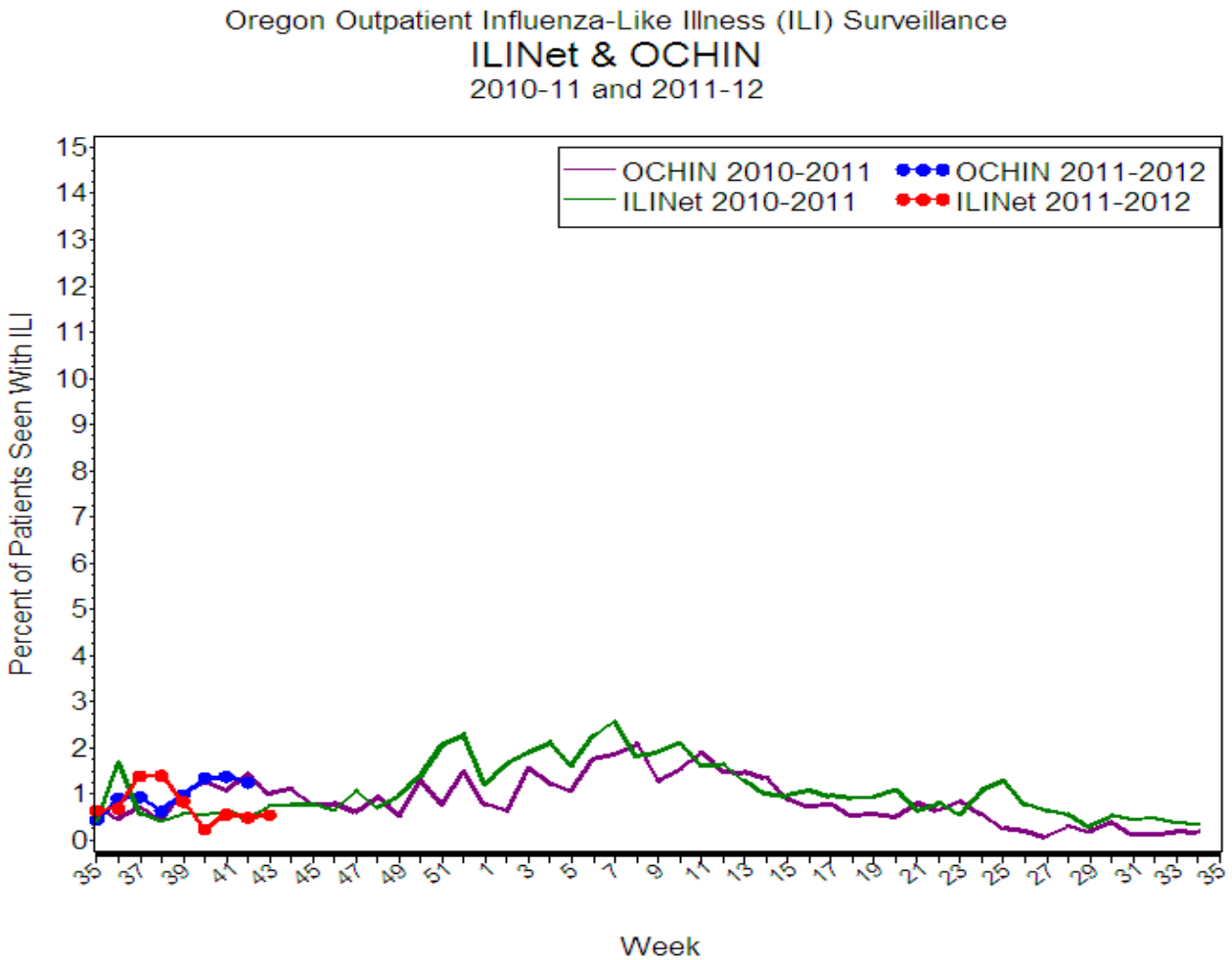


Surveillance weeks run from Sunday through Saturday
 Sentinel providers report the number of patients seen with influenza-like illness as well as total patients seen each week.

OCHIN Influenza-like Illness Surveillance:

Oregon Public Health Division also receives discharge diagnoses data from OCHIN Inc., a collaborative comprising 22 member organizations of federally qualified health centers (FQHC) and rural health centers in Oregon, representing 103 clinics throughout the state. OCHIN reports of ILI are one week behind our other syndromic surveillance system reports.

The percent of OCHIN patients seen with ILI was 1.25% during Week 42.



Laboratory Surveillance:

The Oregon State Public Health Laboratory (OSPHL) is performing influenza typing and sub-typing by PCR on specimens from the following groups of patients:

- Patients seen by Oregon Sentinel providers from ILINet & Influenza Incidence Surveillance Project (IISP).
- Patients hospitalized with influenza-like illness in the Portland Tri-County area (Multnomah, Clackamas and Washington counties) as part of a CDC-funded study. We encourage submission of specimens to OSPHL even if rapid influenza tests are negative or have not been performed.
- Patients identified as part of an outbreak of respiratory illness. Please report clusters of respiratory illness to the on-call ACDP epidemiologist at (971-673-1111), who will then make decisions about the need for testing at the OSPHL.

For additional information on influenza testing guidelines for the 2011-12 season, please see:

<http://public.health.oregon.gov/DiseasesConditions/CommunicableDisease/DiseaseSurveillanceData/Influenza/Pages/InfluenzaTesting.aspx>

Or go to: <http://healthoregon.org/fludata> and select 'Influenza Testing'.

Additional resources:

For more information on influenza in Oregon please see:

<http://www.flu.oregon.gov/>

Oregon influenza surveillance: <http://healthoregon.org/fludata>

CDC Weekly Surveillance Report: <http://www.cdc.gov/flu/weekly>