

FLU BITES

Oregon's Weekly Surveillance Report for Influenza and other Respiratory Viruses

Published March 25, 2011



Summary

- The number of influenza-associated hospitalizations (ten)* has decreased from Week 10, whereas levels of influenza-like illness (ILI) detected by Oregon's outpatient ILI network continue to fluctuate, having increased in Week 11.
- Circulating influenza types/subtypes identified so far this season include influenza B, influenza A/H3, and 2009 H1N1.
- Three influenza-related deaths have been reported in Oregon so far this season; two deaths occurred in adults during the week of January 16-22, 2011 (Week 3) and the third occurred in a pediatric patient during Week 9. Influenza subtypes identified from these patients include 2009 H1N1 and influenza A/H3.
- RSV season began officially in Oregon the week of December 26, 2010-January 1, 2011. RSV percent positivity** was 20% for the week ending March 19, 2011; peak positivity was 39% during the week ending February 12.

* Based on hospitalization surveillance in Clackamas, Multnomah, and Washington counties only.

**Percent positivity based on data from Oregon's RSV Laboratory Surveillance System (number of positive RSV tests ÷ number of RSV tests performed)

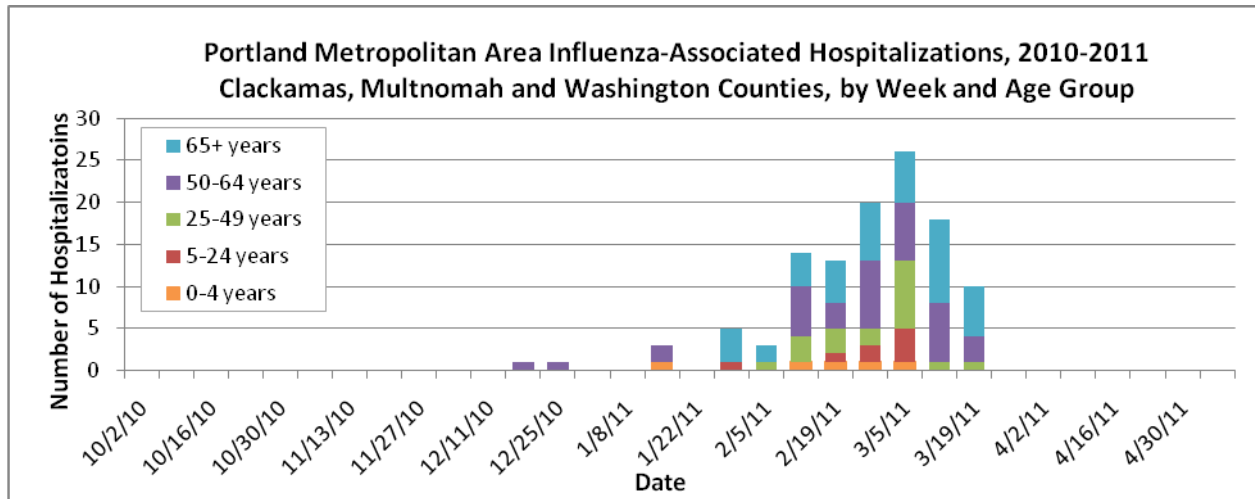
Laboratory-Confirmed Influenza Associated Hospitalizations

Laboratory-confirmed influenza-associated hospitalizations are reported by hospitals in the Portland Tri-County area (Clackamas, Multnomah, and Washington counties) for all ages where patients are admitted to the hospital and have tested positive for influenza by rapid test, direct or indirect fluorescent antibody test, culture, PCR, or serology.

One hundred fifteen influenza-associated hospitalizations have been reported since we began conducting official influenza surveillance this season; all have occurred since Week 50. The most common influenza subtypes identified from these patients include A/H3 (fifty-one patients), 2009 H1N1 (thirty-three patients) and influenza B (two patients). Specimens from three patients tested negative at OSPHL, and subtyping is pending for the remaining specimens.

We encourage submission of specimens to the Oregon State Public Health Laboratory for patients hospitalized with influenza-like illness in the Portland Tri-County area, even if rapid influenza tests are negative or have not been performed. To report an influenza-associated

hospitalization in these three counties, please contact Matt Laidler at 971-673-0288 or email Matthew.Laidler@state.or.us.



Outpatient Influenza-like Illness (ILI)

ILINet: Oregon’s Outpatient Influenza-like Illness Surveillance Network

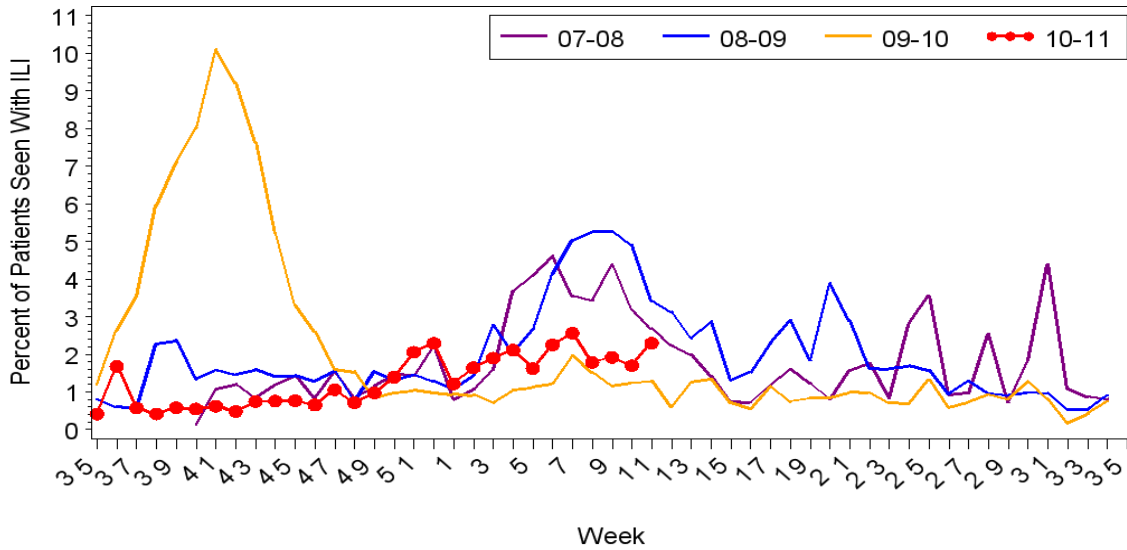
Oregon’s outpatient influenza-like illness network is comprised of 30 voluntary healthcare providers from all across Oregon who report the number of patients with influenza-like illness (ILI) as well as total number of patient visits for each week during the surveillance season.

ILI is defined as fever ($\geq 100^{\circ}\text{F}$) and cough or sore throat. The number of patient visits and the percent of patients with ILI for the last 4 weeks are presented below. The average ILI reported during influenza weeks (defined as percent positive for influenza at the Oregon State Public Health Laboratory $>10\%$) over the previous three seasons is 3.52% (although this figure is skewed upward by the H1N1 pandemic of 2009). The percent of outpatients seen with ILI for Week 10 was 2.30%, which is below the seasonal average.

So far this season the greatest percentage of patients with ILI during one week was 2.56%, seen during the week ending February 19th.

	Number of Patients Visits	Percent of Patients with ILI	Number of Provider Reports
Week ending March 19th	1304	2.30%	10
Week ending March 12th	2998	1.70%	15
Week ending March 5th	3484	1.92%	15
Week ending February 26th	3181	1.79%	16

Oregon Outpatient Influenza-Like Illness Surveillance Network (ILINet) 24MAR11
Percent of Outpatients with Influenza-like Illness (ILI)
 2007-2008, 2008-2009, 2009-2010, 2010-2011

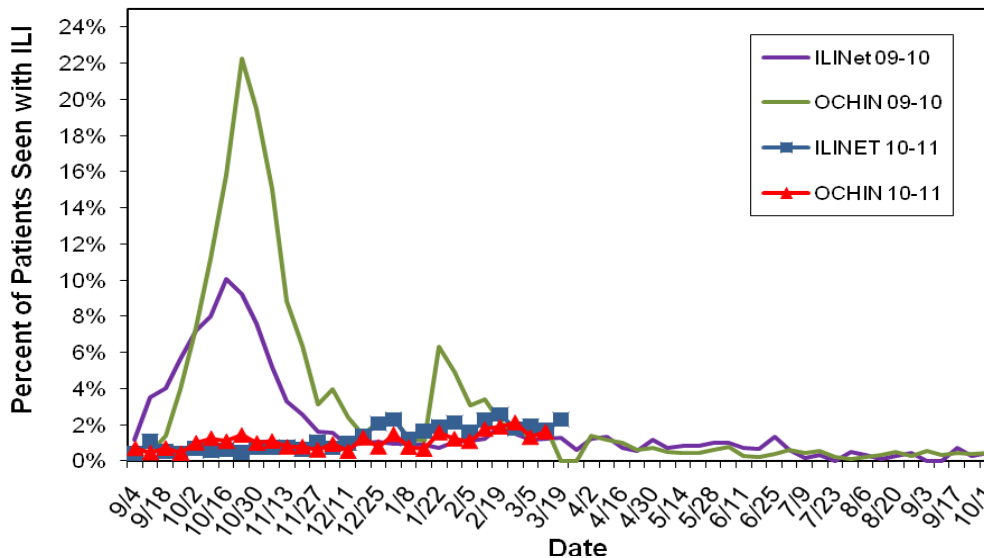


OCHIN Influenza-like Illness Surveillance

Oregon Public Health Division also receives discharge diagnoses data from OCHIN Inc., a collaborative comprising 22 member organizations of federally qualified health centers (FQHC) and rural health centers in Oregon, representing 103 clinics throughout the state. OCHIN reports of ILI are one week behind our other syndromic surveillance system reports. The percent of OCHIN patients seen with ILI was 1.32% and 1.62% during weeks 9 and 10, respectively.

For a more detailed look at our Influenza Sentinel Provider Surveillance System data check out: <http://egov.oregon.gov/DHS/ph/acd/flu/flusurv.shtml#stats>.

Oregon Outpatient Influenza-Like Illness (ILI) Surveillance



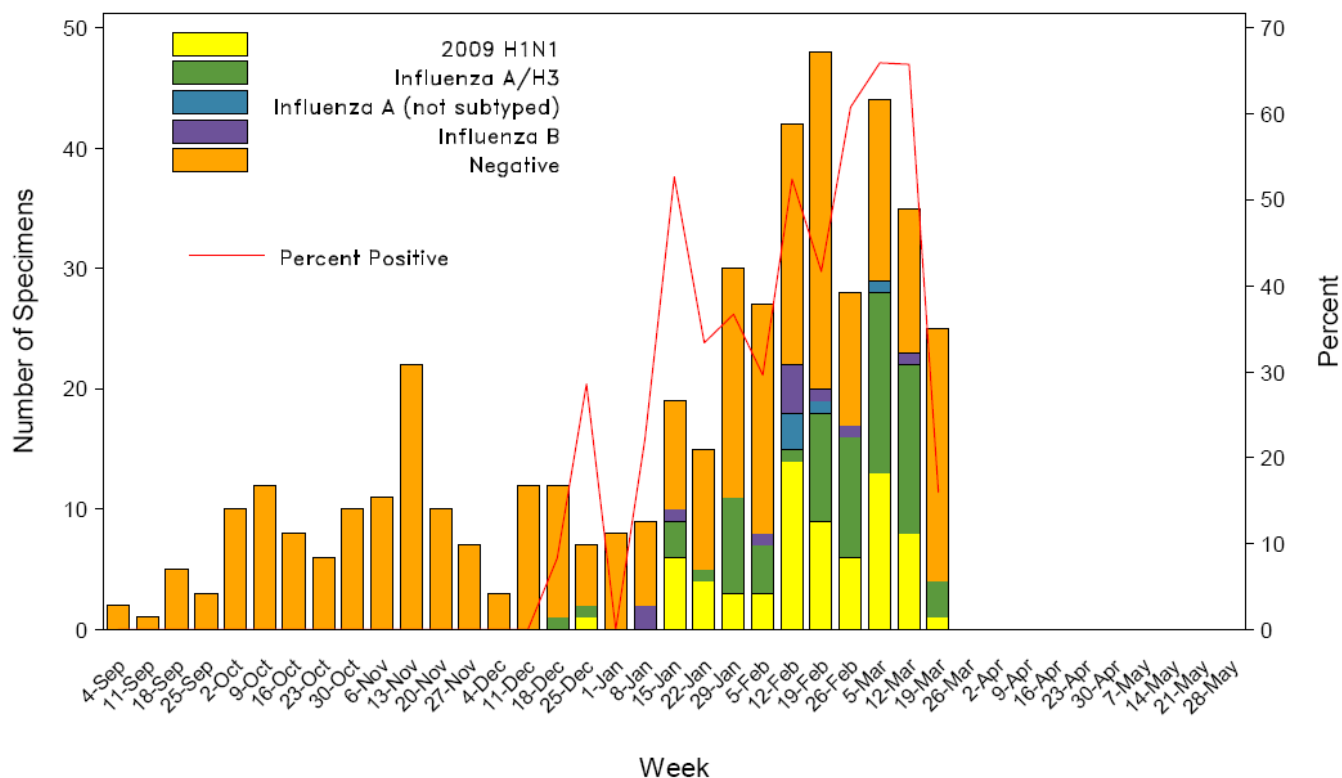
Laboratory Surveillance

The Oregon State Public Health Laboratory (OSPHL) is performing influenza typing and sub-typing by PCR on specimens from the following groups of patients:

- Patients seen by Oregon Sentinel providers (ILINet & Influenza Incidence Surveillance Project (IISP)).
- Patients hospitalized with influenza-like illness in the Portland Tri-County area (Multnomah, Clackamas and Washington counties) as part of a CDC-funded study. We encourage submission of specimens even if rapid influenza tests are negative or have not been performed.
- Patients identified as part of an outbreak of respiratory illness. Please report clusters of respiratory illness to the on-call ACDP epidemiologist (971-673-1111), who will then make decisions about the need for testing at the OSPHL.

To date, all isolates of influenza tested by the OSPHL are similar to viruses chosen for the 2010-2011 influenza vaccine.

**Number and Percent Positive for Influenza by PCR
OSPHL 2010-2011**



**Oregon State Public Health Laboratory
Specimen Type and Subtype, 2010-11**

	Cumulative since September 1st, 2010					Current Week (Mar. 13-19, 2011)
	ILINet N (%)	IISP N %	Hospitalized* or Died N (%)	Outbreaks N (%)	Total N (%)	Total N(%)
Influenza A						
2009 pH1N1	7 (13)	26 (9)	35 (34)	0	68 (15)	1 (4)
Seasonal A (H1)	0	0	0	0	0	0
Seasonal A (H3)	5 (10)	9 (3)	51 (50)	5 (19)	70 (15)	3 (12)
Not subtyped	0	0	5 (5)	0	5 (1)	0
Influenza B	3 (6)	6 (2)	2 (2)	0	11 (2)	0
Respiratory Syncytial Virus (RSV)	1 (2)	15 (5)	0	3 (12)	19 (4)	0
Parainfluenza type 1	0	1 (0.4)	0	0	1 (0.2)	0
Parainfluenza type 2	0	6 (2)	0	0	6 (1)	0
Parainfluenza type 3	2 (4)	11 (4)	0	0	13 (3)	0
Adenovirus	1 (2)	6 (2)	0	0	7 (1)	0
Pending	2 (4)	15 (5)	7 (7)	0	24 (5)	21 (81)
Undetected	32 (61)	192 (67)	3 (3)	18 (69)	245 (52)	1 (4)
Total Tested	53	287	103	26	469	26

*Although we make our best effort to only include hospitalized pts in our lab surveillance., submissions for hospitalized cases include some ER visits

For additional information on influenza testing guidelines for the 2010-11 season, please see:
http://public.health.oregon.gov/DiseasesConditions/CommunicableDisease/ReportingCommunicableDisease/ReportingGuidelines/Documents/test_guideline2010.pdf

Additional resources:

For more information on influenza in Oregon please see: <http://www.flu.oregon.gov/>.

Oregon influenza surveillance:

<http://public.health.oregon.gov/DiseasesConditions/CommunicableDisease/DiseaseSurveillanceData/Influenza/Pages/surveil.aspx>

CDC Weekly Surveillance Report: <http://www.cdc.gov/flu/weekly/>