

Current Week's Data at a Glance: September 29—October 05, 2013 (Week 40)

Oregon Influenza-Like Illness (ILI) Activity Level¹	-
Oregon Influenza Activity Geographic Spread²	No activity
Percent of outpatient visits for ILI	0.2%
Positive influenza tests³	0
Influenza-associated hospitalizations⁴	0
Reported ILI outbreaks	0
Influenza-associated pediatric mortality	0
Respiratory Syncytial Virus (RSV) activity⁵	11%

¹Levels are determined by CDC. Based on proportion of outpatient visits— levels include minimal, low, moderate, and high.

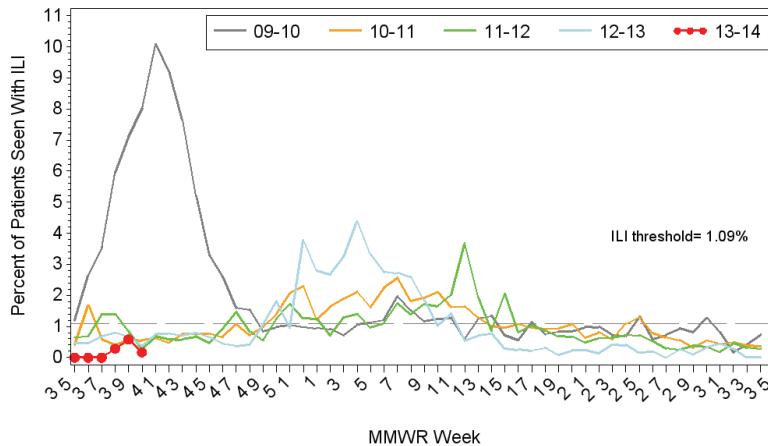
²Levels for geographic spread include no activity, sporadic, local, regional, and widespread.

³Reported by state public health lab (OSPHL) from outbreaks, tri-county hospitalizations, and sentinel ILI surveillance; includes only current week positive tests.

⁴Based on hospitalization surveillance in Clackamas, Multnomah, and Washington counties only.

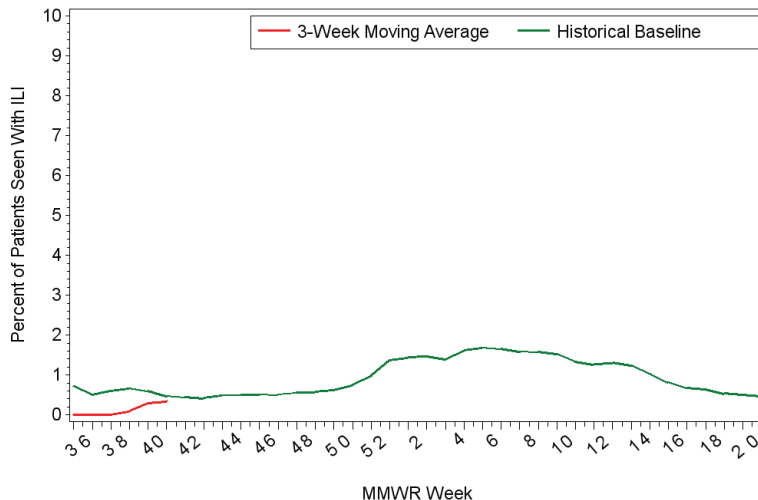
⁵Percent positivity based on data from Oregon's RSV Laboratory Surveillance System.

Oregon Outpatient Influenza-Like Illness Surveillance Network (ILINet) 11OCT13
Percent of Outpatients with Influenza-like Illness (ILI)
2009-2010, 2010-2011, 2011-2012, 2012-2013, 2013-2014



Surveillance weeks run from Sunday through Saturday
Sentinel providers report the number of patients seen with influenza-like illness as well as total patients seen each week.

Oregon Health Authority, Acute and Communicable Disease Prevention 11OCT13
Oregon Outpatient Influenza-Like Illness Surveillance Network (ILINet)
3-Week Moving Average of Percent of Outpatients with Influenza-like Illness (ILI)



ILINet: Oregon's Outpatient Influenza-like Illness Surveillance Network: Oregon's outpatient influenza-like illness (ILI) network comprises 22 voluntary healthcare providers from across Oregon who report the number of patients with influenza-like illness as well as total number of patient visits for each week during the surveillance season. **The percent of outpatients seen with ILI for week 40 of 2013 was 0.2% which is below Oregon's seasonal threshold of 1.09%.***

Note: ILI is defined as fever ($\geq 100^{\circ}\text{F}$) and cough or sore throat. *The ILI baseline (threshold) is calculated as the mean percentage of visits for ILI during non-influenza weeks (weeks 21-39) with two standard deviations, and is based on the three previous years of data.

The 3-week moving average for percent of outpatients seen with ILI in week 40 was 0.45%, which is below the historical baseline for this week.

The 3-week moving average does not show actual weekly % ILI, but an average that includes the current week and preceding 2 weeks, and is used to smooth out fluctuations in the data. The historical baseline is the average 3-week moving averages over the preceding four flu seasons.

All FluBites data provided are preliminary, and may change as additional reports are received.

Summary of other influenza activity:

OCHIN ILI Data: OCHIN ILI data are not available for week 40.

Laboratory data: No specimens tested positive for influenza during week 40.

Hospitalizations: No hospitalizations were reported for week 40

Outbreaks: No influenza or ILI outbreaks were reported for week 40.

CDC influenza data: Due to the federal government shutdown, national influenza data are not available from CDC for week 40.