

Current Week's Data at a Glance: December 02-08, 2012 (Week 49)

Oregon Influenza-Like Illness (ILI) Activity Level¹	Minimal
Oregon Influenza Activity Geographic Spread²	Local
Percent of outpatient visits for ILI	1.2%
Positive influenza tests³	10
Influenza-associated hospitalizations⁴	4
Reported ILI outbreaks	0
Influenza-associated pediatric mortality	0
Respiratory Syncytial Virus (RSV) activity⁵	9.7%

¹Based on proportion of outpatient visits—levels include minimal, low, moderate, and high.

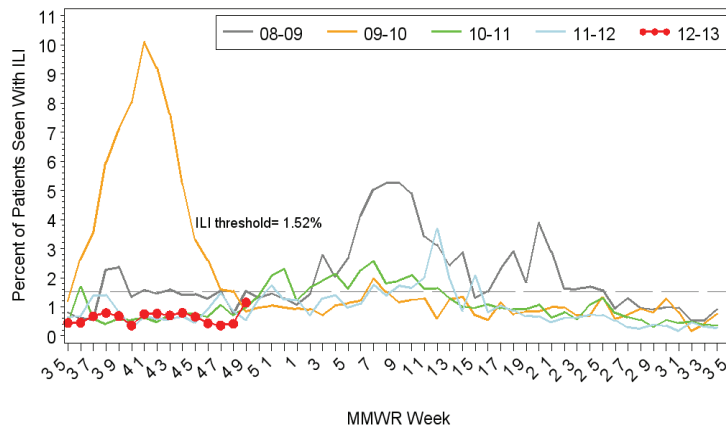
²Levels for geographic spread include no activity, sporadic, local, regional, and widespread.

³Reported by state public health lab (OSPHL) from outbreaks, tri-county hospitalizations, and sentinel ILI surveillance; includes only current week positive tests.

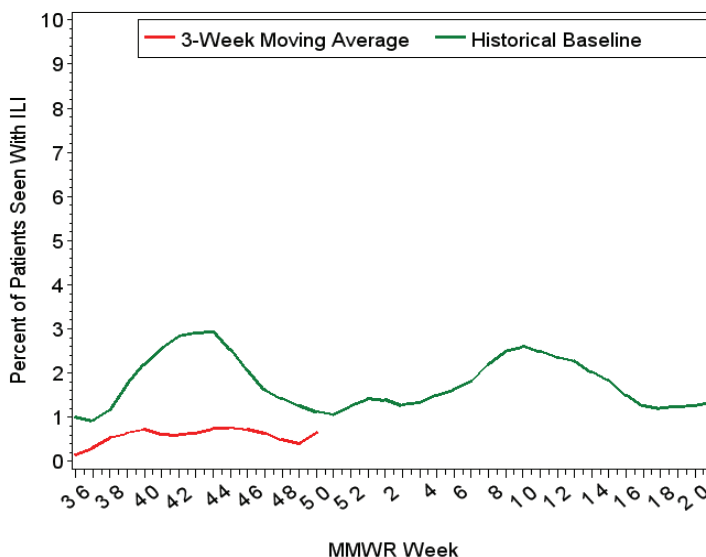
⁴Based on hospitalization surveillance in Clackamas, Multnomah, and Washington counties only.

⁵Percent positivity based on data from Oregon's RSV Laboratory Surveillance System.

Oregon Health Authority, Acute and Communicable Disease Prevention 14DEC12
Oregon Outpatient Influenza-Like Illness Surveillance Network (ILINet)
Percent of Outpatients with Influenza-like Illness (ILI)
2008-2009, 2009-2010, 2010-2011, 2011-2012, 2012-2013



Surveillance weeks run from Sunday through Saturday
Sentinel providers report the number of patients seen with influenza-like illness as well as total patients seen each week.
Oregon Health Authority, Acute and Communicable Disease Prevention 14DEC12
Oregon Outpatient Influenza-Like Illness Surveillance Network (ILINet)
3-Week Moving Average of Percent of Outpatients with Influenza-like Illness (ILI)



ILINet: Oregon's Outpatient Influenza-like Illness Surveillance Network: Oregon's outpatient influenza-like illness (ILI) network comprises 22 voluntary healthcare providers from all across Oregon who report the number of patients with influenza-like illness as well as total number of patient visits for each week during the surveillance season. **The percent of outpatients seen with ILI for Week 49 of 2012 was 1.2%, which is just below Oregon's seasonal threshold of 1.52%.***

Note: ILI is defined as fever ($\geq 100^{\circ}\text{F}$) and cough or sore throat. The ILI baseline (threshold) is calculated as the mean percentage of visits for ILI during non-influenza weeks (weeks with $< 10\%$ of specimens at OSPHL testing positive for influenza) with two standard deviations, and is based on the three previous years of data.

The 3-week moving average for %ILI was 0.7%, and is below the historical baseline.

The 3-week moving average does not show actual weekly % ILI, but an average that includes the current week and preceding 2 weeks, and is used to smooth out fluctuations in the data. The historical baseline is the average 3-week moving averages over the preceding four flu seasons.

Several Oregon counties are currently under-represented in ILI surveillance. If you would like to participate in ILINet surveillance, please contact Patricia Newman at OHA:

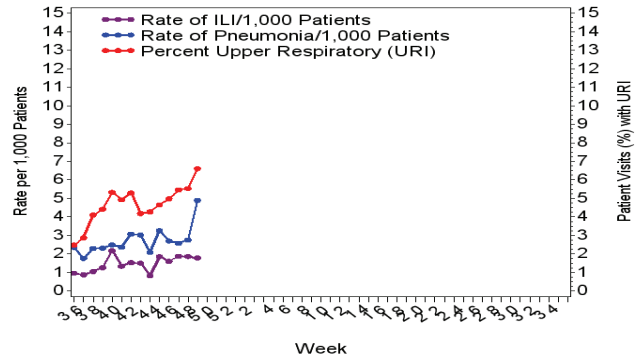
patricia.newman@state.or.us or

971-673-1076

OCHIN Influenza-like Illness Surveillance: Oregon Public Health Division also receives discharge diagnoses data from OCHIN Inc., a collaborative comprising 22 member organizations of federally qualified health centers (FQHC) and rural health centers in Oregon, representing 103 clinics throughout the state. OCHIN data are 1 week *behind* ILINet data. The rate of ILI per 1,000 OCHIN patients was 1.8 during Week 48, 2012.

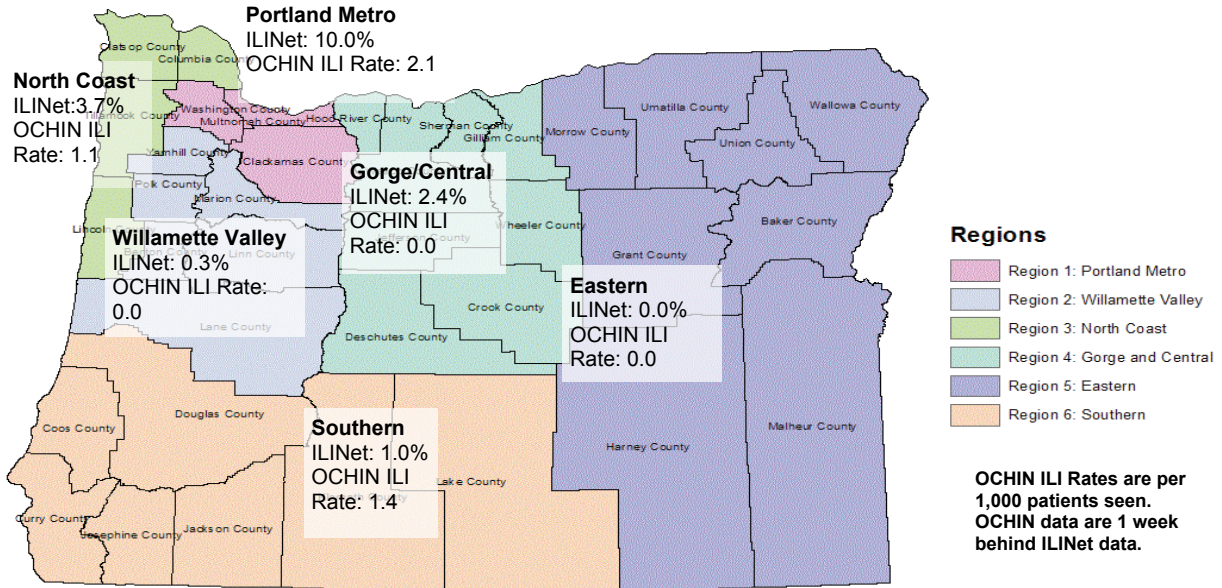
Note: OCHIN reports of ILI are one week *behind* ILINet reports. Respiratory illness categories for OCHIN data are based on ICD-9 diagnostic codes.

Oregon Outpatient ILI/URI/Pneumonia Surveillance, OCHIN 2012-2013



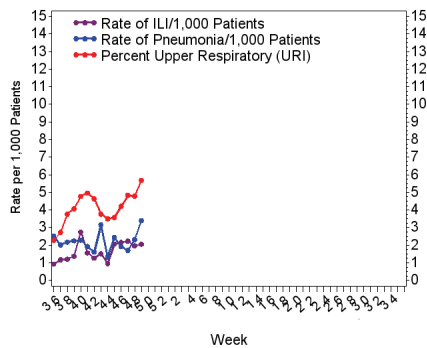
Categories are not mutually exclusive, and are based on ICD-9 diagnosis codes or combinations of codes.

ILI Activity by Region: ILINet (% ILI) and OCHIN (ILI Rate)



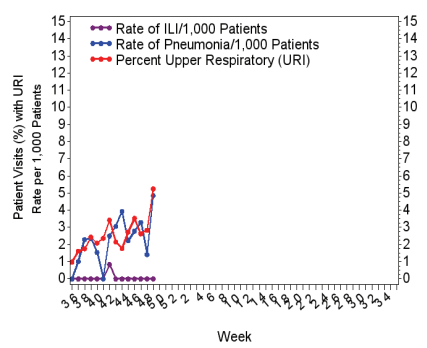
OCHIN ILI Rates are per 1,000 patients seen. OCHIN data are 1 week behind ILINet data.

Region 1: Oregon Outpatient ILI/URI/Pneumonia Surveillance OCHIN 2012-2013



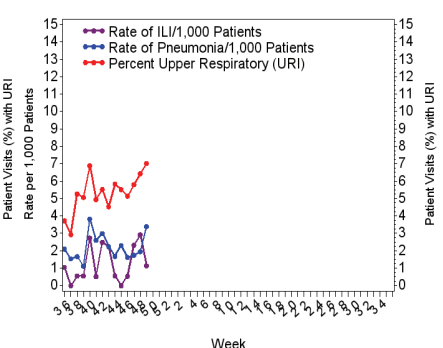
Categories are not mutually exclusive, and are based on ICD-9 diagnosis codes or combinations of codes.

Region 2: Oregon Outpatient ILI/URI/Pneumonia Surveillance OCHIN 2012-2013



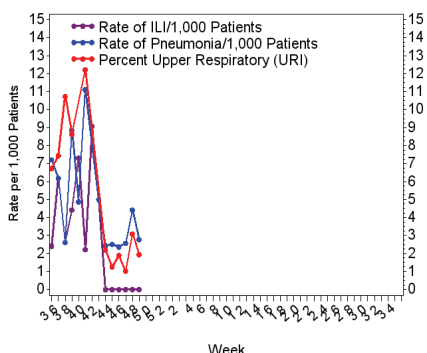
Categories are not mutually exclusive, and are based on ICD-9 diagnosis codes or combinations of codes.

Region 3: Oregon Outpatient ILI/URI/Pneumonia Surveillance OCHIN 2012-2013



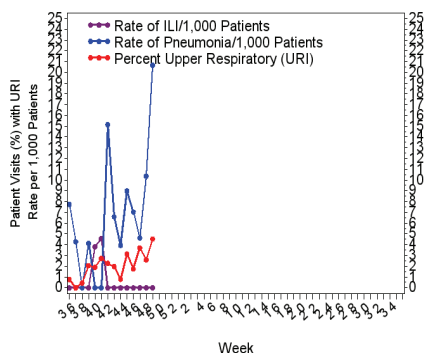
Categories are not mutually exclusive, and are based on ICD-9 diagnosis codes or combinations of codes.

Region 4: Oregon Outpatient ILI/URI/Pneumonia Surveillance OCHIN 2012-2013



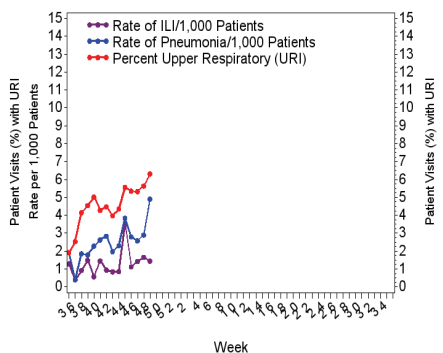
Categories are not mutually exclusive, and are based on ICD-9 diagnosis codes or combinations of codes.

Region 5: Oregon Outpatient ILI/URI/Pneumonia Surveillance OCHIN 2012-2013



Categories are not mutually exclusive, and are based on ICD-9 diagnosis codes or combinations of codes.

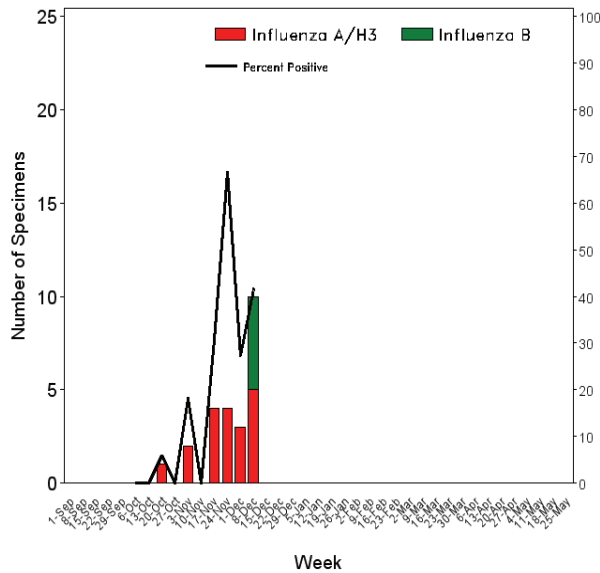
Region 6: Oregon Outpatient ILI/URI/Pneumonia Surveillance OCHIN 2012-2013



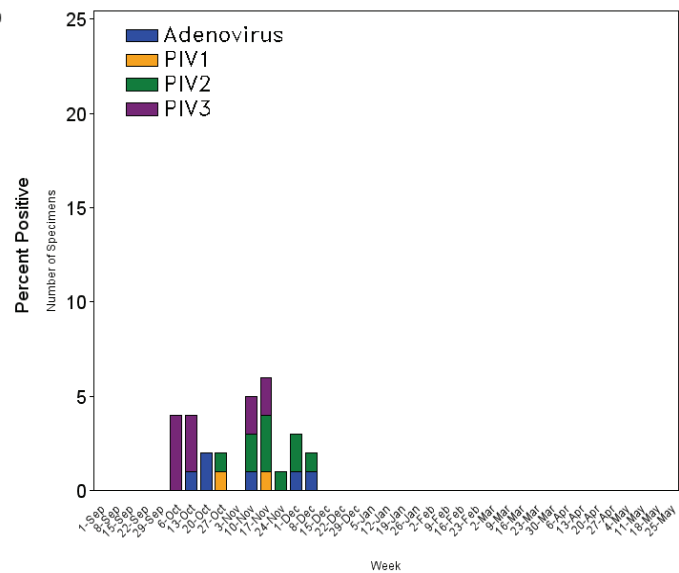
Categories are not mutually exclusive, and are based on ICD-9 diagnosis codes or combinations of codes.

Laboratory Surveillance:

Number and Percent Positive for Influenza by PCR, OSPHL 2012-2013



Viral Respiratory Pathogens PCR-Positive at OSPHL by Week, 2012-2013



The Oregon State Public Health Laboratory (OSPHL) is performing influenza typing and sub-typing by PCR on specimens from the following groups of patients:

- Patients seen by Oregon Sentinel providers from ILINet & Influenza Incidence Surveillance Project (IISP).
- Patients hospitalized with influenza-like illness in the Portland Tri-County area (Multnomah, Clackamas and Washington counties) as part of the CDC-funded study, The Influenza Hospitalization Network (FluSurv-NET). We encourage submission of specimens to OSPHL even if rapid influenza tests are negative or have not been performed.
- Patients identified as part of an outbreak of respiratory illness. Please report clusters of respiratory illness to the on-call ACDP epidemiologist at (971-673-1111), who will then make decisions about the need for testing at the OSPHL.

Tables 1 and 2 show the current week and cumulative totals (since **Oct. 1, 2012**) for influenza and other respiratory virus specimens tested at OSPHL.

Table 1. Oregon State Public Health Laboratory Influenza Specimen Type and Subtype, 2012-13. *

Detected Influenza Pathogen	Current Week	Cumulative
Influenza A	5	19
2009 pH1N1	0	0
Seasonal A H3	5	19
Influenza B	5	5
Total Tested	24	113

¹ Specimens where influenza not detected— other respiratory virus detection shown in Table 2. Includes PCR and culture positive labs.

Table 2. Oregon State Public Health Laboratory Non-Influenza Respiratory Viruses, 2012-13. *

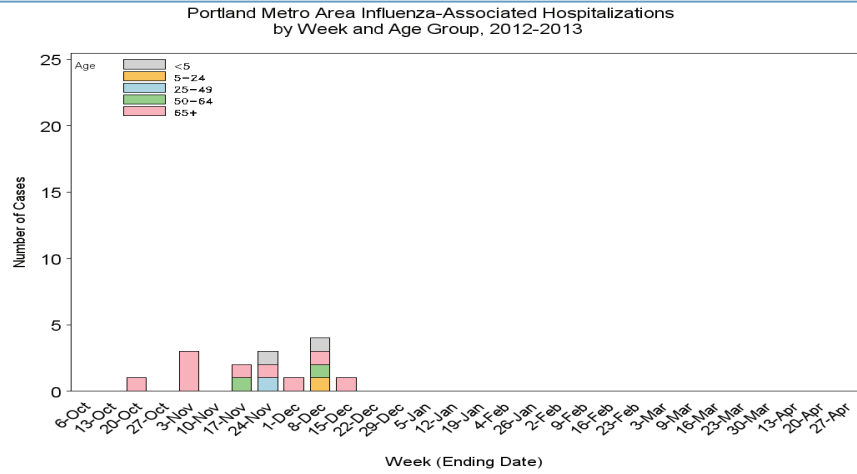
	Current Week	Cumulative
Adenovirus	1	6
Parainfluenza type 1	0	2
Parainfluenza type 2	1	10
Parainfluenza type 3	0	11
Human Metapneumovirus	0	0
RSV	0	0
Total Tested	20	99

*Includes specimen testing from outbreaks, hospitalized cases, statewide ILINet sentinel provider surveillance, and the state Influenza Incidence Surveillance Project (IISP). Totals tested from Table 1 & 2 not mutually exclusive.

Tri-County Influenza

Hospitalizations:

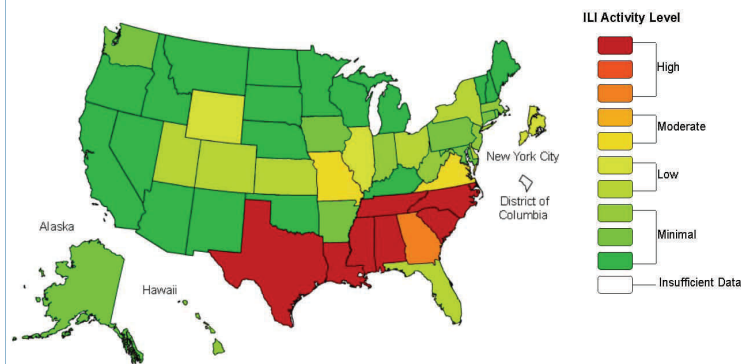
4 hospitalizations were reported in the Portland area (Clackamas, Multnomah, Washington Counties) during Week 49. A cumulative total of 15 hospitalizations have been reported this season.



National Data:

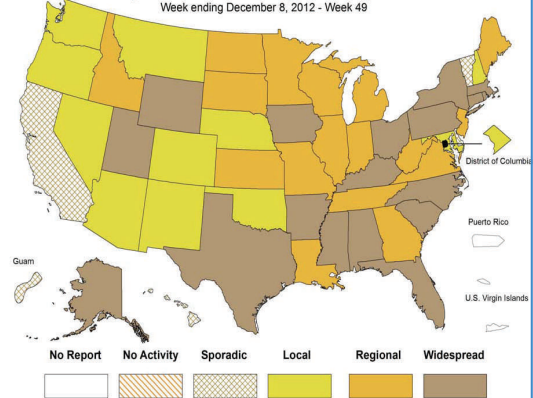
- **Viral Surveillance:** Of 7,663 specimens tested and reported by U.S. World Health Organization (WHO) and National Respiratory and Enteric Virus Surveillance System (NREVSS) collaborating laboratories during week 49, 2,172 (28.3%) were positive for influenza.
- **Novel Influenza A Virus:** One human infection with a novel influenza A virus was reported.
- **Pneumonia and Influenza Mortality:** The proportion of deaths attributed to pneumonia and influenza (P&I) was below the epidemic threshold.
- **Influenza-associated Pediatric Deaths:** One influenza-associated pediatric death was reported and was associated with an influenza B virus.
- **Outpatient Illness Surveillance:** The proportion of outpatient visits for influenza-like illness (ILI) was 2.8%, which is above the national baseline of 2.2%. Seven of ten regions reported ILI above region-specific baseline levels. Eight states experienced high ILI activity, 2 states experienced moderate ILI activity; New York City and 9 states experienced low ILI activity; 31 states experienced minimal ILI activity, and the District of Columbia had insufficient data.
- **Geographic Spread of Influenza:** The geographic spread of influenza in 18 states was reported as widespread; 17 states reported regional activity; the District of Columbia and 11 states reported local activity; Guam and 4 states reported sporadic activity, and Puerto Rico and the U.S. Virgin Islands did not report.

Influenza-Like Illness (ILI) Activity Level Indicator Determined by Data Reported to ILINet
2012-13 Influenza Season Week 49 ending Dec 08, 2012



Map above left: This map uses the proportion of outpatient visits to ILINet sentinel providers for influenza-like illness to measure the ILI activity level within a state. It does not, however, measure the extent of geographic spread of flu within a state. Therefore, outbreaks occurring in a single city could cause the state to display high activity levels.

Weekly Influenza Activity Estimates Reported by State & Territorial Epidemiologists*
Week ending December 8, 2012 - Week 49



Map above right: This map measures the geographic spread of influenza viruses, but does not measure the intensity of influenza activity.

Additional resources:

- For additional information on influenza testing guidelines for the 2012-2013 season, go to: <http://healthoregon.org/fludata> and select 'Influenza Testing'
- CDC Weekly Surveillance Report: <http://www.cdc.gov/flu/weekly>
- Please link here for the *most recent evaluation* of commercially available rapid influenza diagnostic tests: <http://www.cdc.gov/mmwr/pdf/wk/mm6143.pdf>