

## Current Week's Data at a Glance: December 16 - 22, 2012 (Week 51)

<b>Oregon Influenza-Like Illness (ILI) Activity Level<sup>1</sup></b>	<b>Minimal</b>
<b>Oregon Influenza Activity Geographic Spread<sup>2</sup></b>	<b>Local</b>
<b>Percent of outpatient visits for ILI</b>	<b>0.6%</b>
<b>Positive influenza tests<sup>3</sup></b>	<b>2</b>
<b>Influenza-associated hospitalizations<sup>4</sup></b>	<b>2</b>
<b>Reported ILI outbreaks</b>	<b>0</b>
<b>Influenza-associated pediatric mortality</b>	<b>0</b>
<b>Respiratory Syncytial Virus (RSV) activity<sup>5</sup></b>	<b>16%</b>

<sup>1</sup>Based on proportion of outpatient visits—levels include minimal, low, moderate, and high.

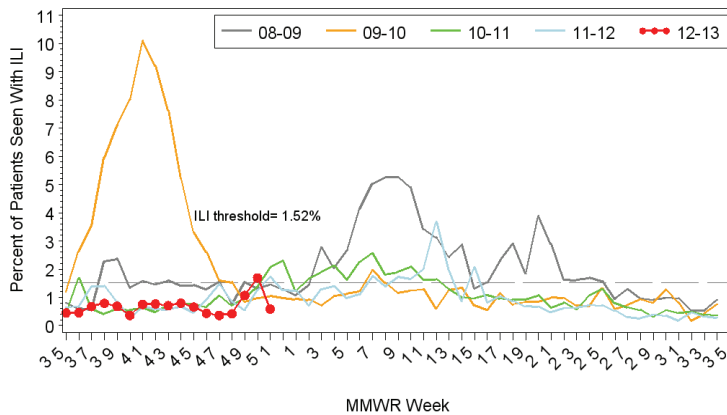
<sup>2</sup>Levels for geographic spread include no activity, sporadic, local, regional, and widespread.

<sup>3</sup>Reported by state public health lab (OSPHL) from outbreaks, tri-county hospitalizations, and sentinel ILI surveillance; includes only current week positive tests.

<sup>4</sup>Based on hospitalization surveillance in Clackamas, Multnomah, and Washington counties only.

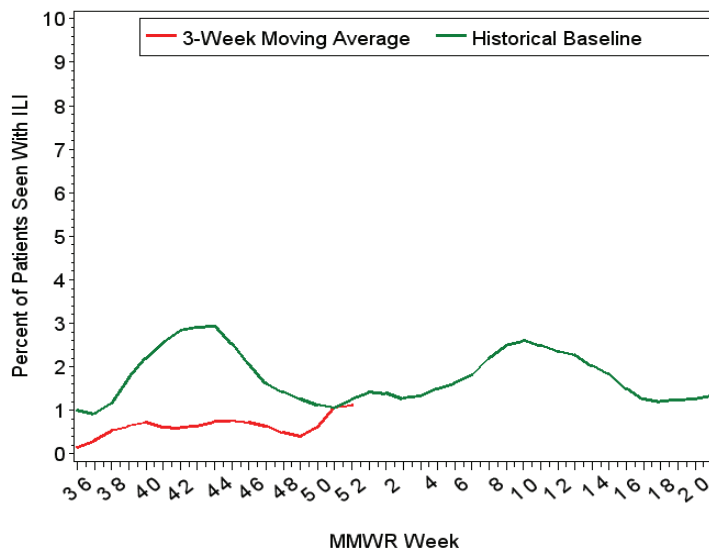
<sup>5</sup>Percent positivity based on data from Oregon's RSV Laboratory Surveillance System.

Oregon Outpatient Influenza-Like Illness Surveillance Network (ILINet) 28DEC12  
Percent of Outpatients with Influenza-like Illness (ILI)  
2008-2009, 2009-2010, 2010-2011, 2011-2012, 2012-2013



Surveillance weeks run from Sunday through Saturday  
Sentinel providers report the number of patients seen with influenza-like illness as well as total patients seen each week.

Oregon Health Authority, Acute and Communicable Disease Prevention 28DEC12  
Oregon Outpatient Influenza-Like Illness Surveillance Network (ILINet)  
3-Week Moving Average of Percent of Outpatients with Influenza-like Illness (ILI)



**ILINet: Oregon's Outpatient Influenza-like Illness Surveillance Network:** Oregon's outpatient influenza-like illness (ILI) network comprises 22 voluntary healthcare providers from all across Oregon who report the number of patients with influenza-like illness as well as total number of patient visits for each week during the surveillance season. **The percent of outpatients seen with ILI for week 51 of 2012 was 0.6%, which is below Oregon's seasonal threshold of 1.52%.\***

*Note:* ILI is defined as fever ( $\geq 100^{\circ}\text{F}$ ) and cough or sore throat. The ILI baseline (threshold) is calculated as the mean percentage of visits for ILI during non-influenza weeks (weeks with  $< 10\%$  of specimens at OSPHL testing positive for influenza) with two standard deviations, and is based on the three previous years of data.

**The 3-week moving average for %ILI in week 51 was 1.1%, below the historical baseline.**

The 3-week moving average does not show actual weekly % ILI, but an average that includes the current week and preceding 2 weeks, and is used to smooth out fluctuations in the data. The historical baseline is the average 3-week moving averages over the preceding four flu seasons.

Several Oregon counties are currently under-represented in ILI surveillance. If you would like to participate in ILINet surveillance, please contact Patricia Newman at OHA:

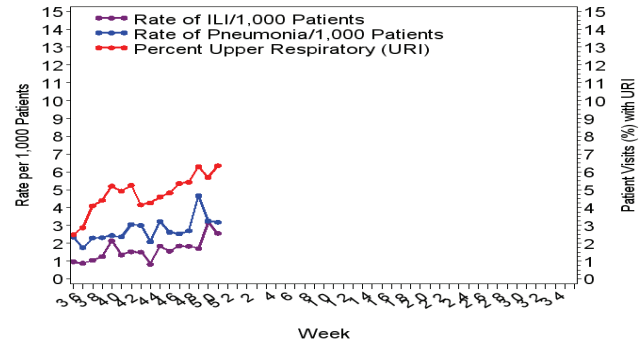
[patricia.newman@state.or.us](mailto:patricia.newman@state.or.us) or

971-673-1076

**OCHIN Influenza-like Illness Surveillance:** Oregon Public Health Division also receives discharge diagnoses data from OCHIN Inc., a collaborative comprising 22 member organizations of federally qualified health centers (FQHC) and rural health centers in Oregon, representing 103 clinics throughout the state. OCHIN data are 1 week *behind* ILINet data. The rate of ILI per 1,000 OCHIN patients was 2.6 during week 50, 2012.

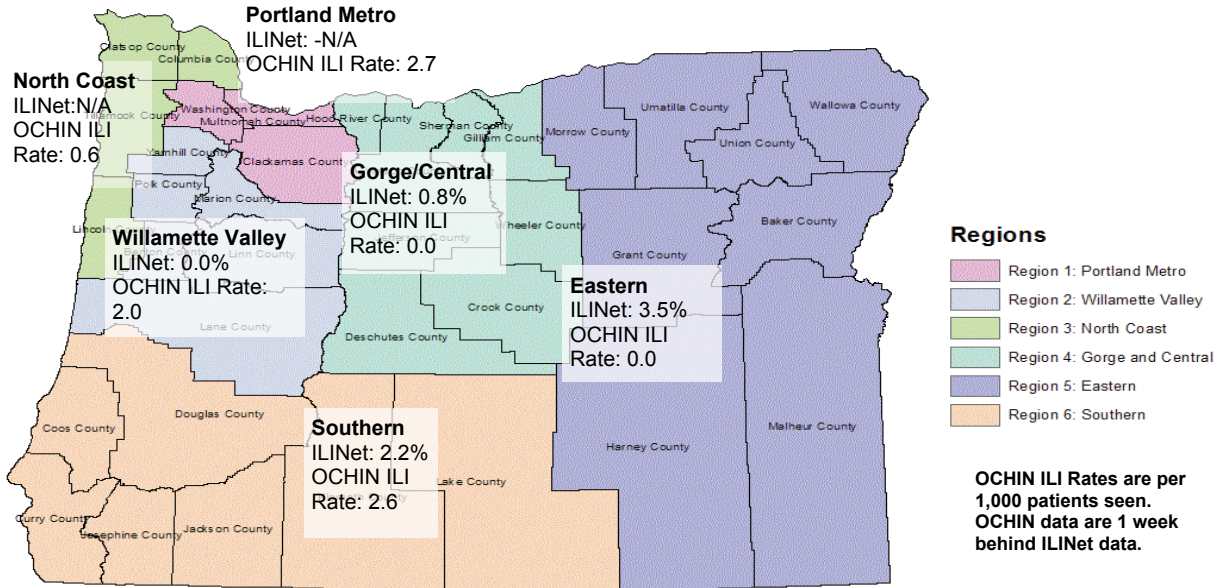
**Note:** OCHIN reports of ILI are one week *behind* ILINet reports. Respiratory illness categories for OCHIN data are based on ICD-9 diagnostic codes.

Oregon Outpatient ILI/URI/Pneumonia Surveillance, OCHIN 2012-2013



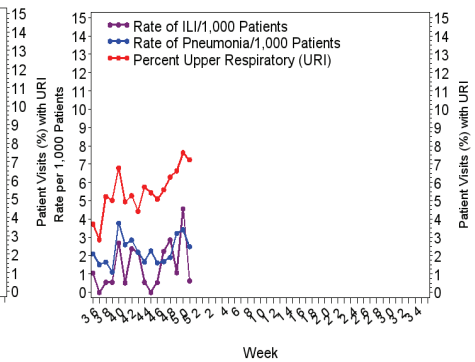
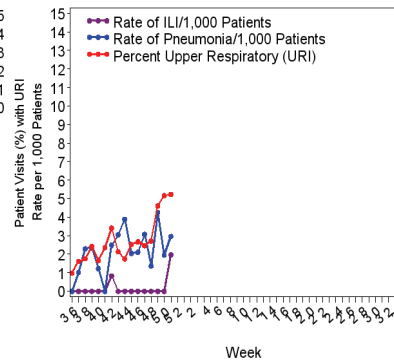
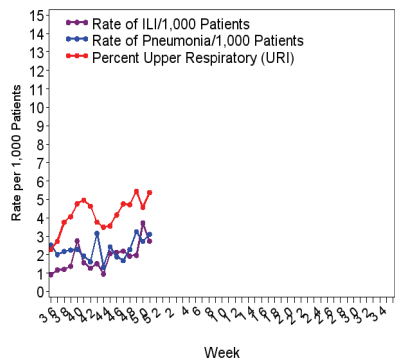
Categories are not mutually exclusive, and are based on ICD-9 diagnosis codes or combinations of codes.

**ILI Activity by Region: ILINet (% ILI) and OCHIN (ILI Rate)**



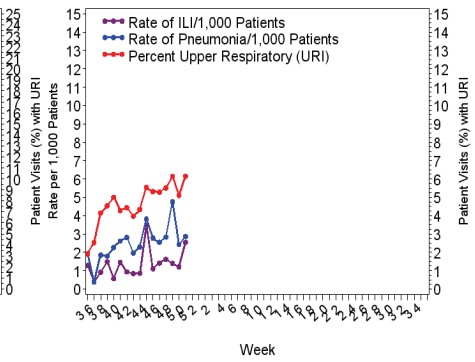
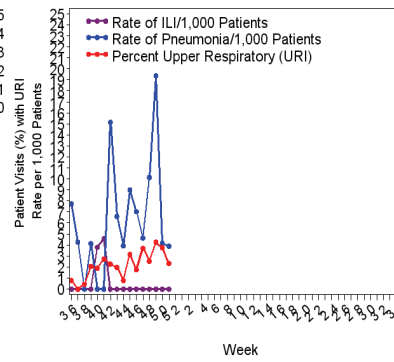
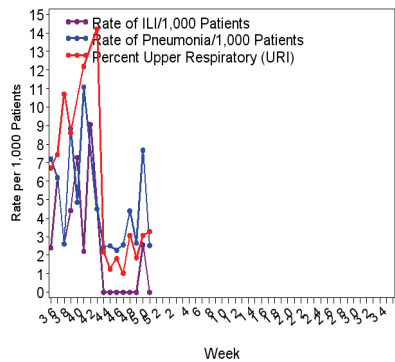
OCHIN ILI Rates are per 1,000 patients seen. OCHIN data are 1 week behind ILINet data.

Region 1: Oregon Outpatient ILI/URI/Pneumonia Surveillance OCHIN 2012-2013    Region 2: Oregon Outpatient ILI/URI/Pneumonia Surveillance OCHIN 2012-2013    Region 3: Oregon Outpatient ILI/URI/Pneumonia Surveillance OCHIN 2012-2013



Categories are not mutually exclusive, and are based on ICD-9 diagnosis codes or combinations of codes.

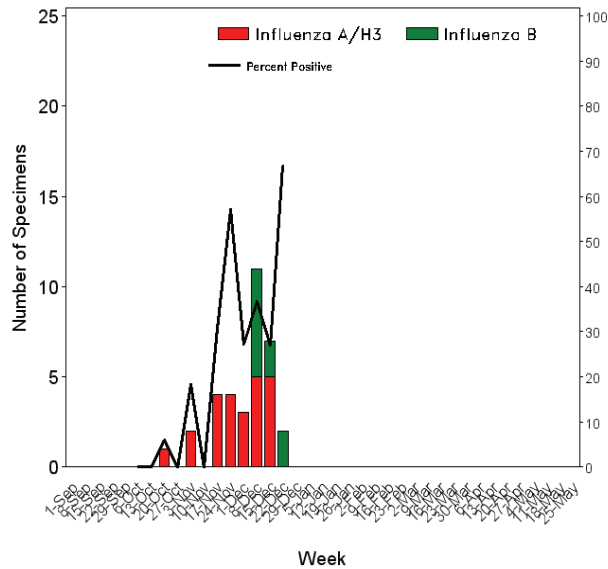
Region 4: Oregon Outpatient ILI/URI/Pneumonia Surveillance OCHIN 2012-2013    Region 5: Oregon Outpatient ILI/URI/Pneumonia Surveillance OCHIN 2012-2013    Region 6: Oregon Outpatient ILI/URI/Pneumonia Surveillance OCHIN 2012-2013



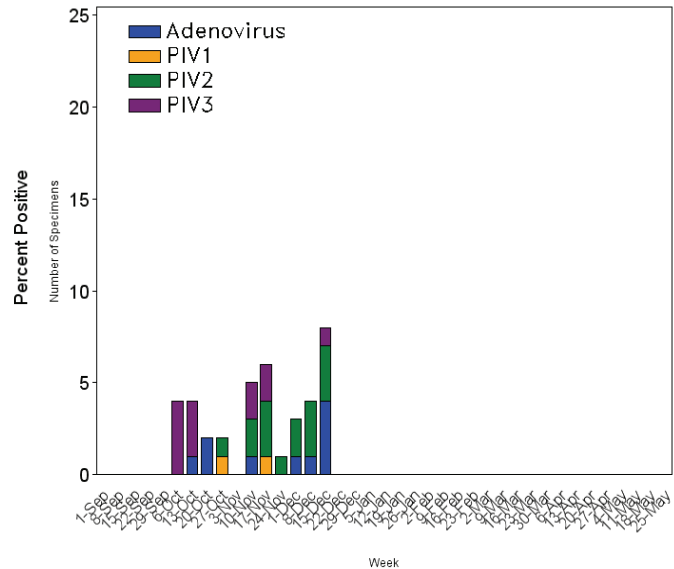
Categories are not mutually exclusive, and are based on ICD-9 diagnosis codes or combinations of codes.

## Laboratory Surveillance:

Number and Percent Positive for Influenza by PCR, OSPHL 2012-2013



Viral Respiratory Pathogens PCR-Positive at OSPHL by Week, 2012-2013



The Oregon State Public Health Laboratory (OSPHL) is performing influenza typing and sub-typing by PCR on specimens from the following groups of patients:

- Patients seen by Oregon Sentinel providers from ILINet & Influenza Incidence Surveillance Project (IISP).
- Patients hospitalized with influenza-like illness in the Portland Tri-County area (Multnomah, Clackamas and Washington counties) as part of the CDC-funded study, The Influenza Hospitalization Network (FluSurv-NET). We encourage submission of specimens to OSPHL even if rapid influenza tests are negative or have not been performed.
- Patients identified as part of an outbreak of respiratory illness. Please report clusters of respiratory illness to the on-call ACDP epidemiologist at (971-673-1111), who will then make decisions about the need for testing at the OSPHL.

**Tables 1 and 2** show the current week and cumulative totals (since **Oct. 1, 2012**) for influenza and other respiratory virus specimens tested at OSPHL.

**Table 1. Oregon State Public Health Laboratory Influenza Specimen Type and Subtype, 2012-13. \***

Detected Influenza Pathogen	Current Week	Cumulative
<b>Influenza A</b>	0	24
2009 pH1N1	0	0
Seasonal A H3	0	24
<b>Influenza B</b>	2	10
<b>Total Tested</b>	<b>3</b>	<b>173</b>

<sup>1</sup> Specimens where influenza not detected— other respiratory virus detection shown in Table 2. Includes PCR and culture positive labs.

**Table 2. Oregon State Public Health Laboratory Non-Influenza Respiratory Viruses, 2012-13. \***

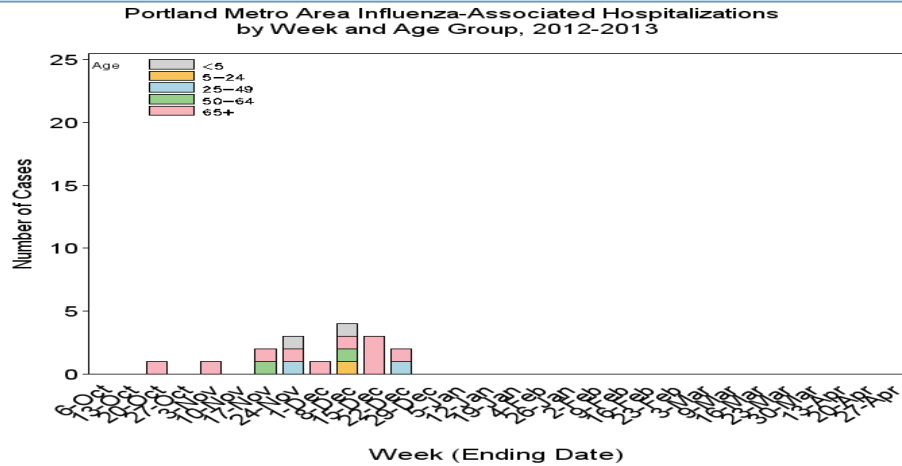
	Current Week	Cumulative
<b>Adenovirus</b>	0	10
<b>Parainfluenza type 1</b>	0	2
<b>Parainfluenza type 2</b>	0	15
<b>Parainfluenza type 3</b>	0	12
<b>Human Metapneumovirus</b>	0	0
<b>RSV</b>	0	0
<b>Total Tested</b>	<b>3</b>	<b>139</b>

\*Includes specimen testing from outbreaks, hospitalized cases, statewide ILINet sentinel provider surveillance, and the state Influenza Incidence Surveillance Project (IISP). Totals tested from Table 1 & 2 not mutually exclusive.

## Tri-County Influenza

### Hospitalizations:

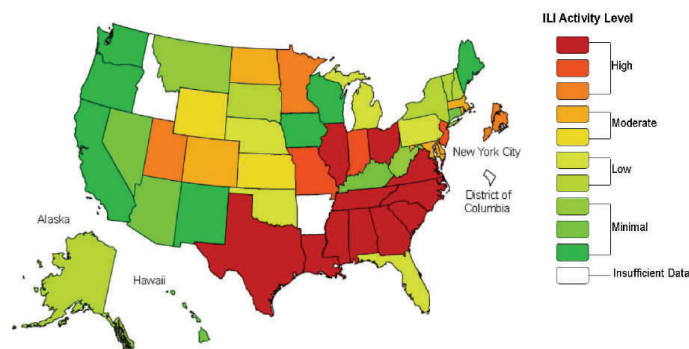
Two hospitalizations were reported in the Portland area (Clackamas, Multnomah, Washington Counties) during Week 51. A cumulative total of 17 hospitalizations have been reported this season.



### National Data:

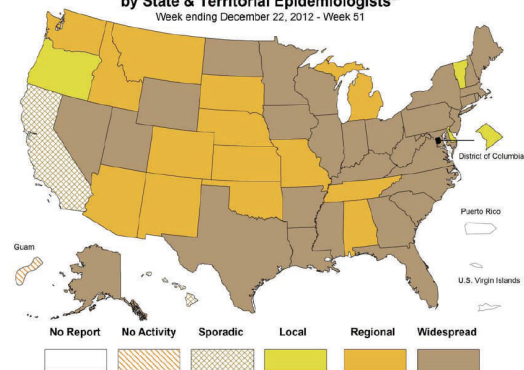
- **Viral Surveillance:** Of 6,234 specimens tested and reported by U.S. World Health Organization (WHO) and National Respiratory and Enteric Virus Surveillance System (NREVSS) collaborating laboratories in week 51, 1,846 (29.6%) were positive for influenza.
- **Pneumonia and Influenza Mortality:** The proportion of deaths attributed to pneumonia and influenza (P&I) was below the epidemic threshold.
- **Influenza-Associated Pediatric Deaths:** Eight influenza-associated pediatric deaths were reported. Three were associated with influenza B viruses, 3 were associated with influenza A (H3) viruses, and 2 were associated with influenza A viruses for which the subtype was not determined.
- **Outpatient Illness Surveillance:** The proportion of outpatient visits for influenza-like illness (ILI) was 4.2%; above the national baseline of 2.2%. Nine of 10 regions reported ILI above region-specific baseline levels. New York City and 16 states experienced high ILI activity; 8 states experienced moderate ILI activity; 10 states experienced low ILI activity; 14 states experienced minimal ILI activity, and the District of Columbia and 2 states had insufficient data.
- **Geographic Spread of Influenza:** Thirty-one states reported widespread geographic influenza activity; 14 states reported regional activity; the District of Columbia and 3 states reported local activity; 2 states reported sporadic activity; Guam reported no influenza activity, and Puerto Rico and the U.S. Virgin Islands did not report.

**Influenza-Like Illness (ILI) Activity Level Indicator Determined by Data Reported to ILINet**  
2012-13 Influenza Season Week 51 ending Dec 22, 2012



**Map above left:** This map uses the proportion of outpatient visits to ILINet sentinel providers for influenza-like illness to measure the ILI activity level within a state. It does not, however, measure the extent of geographic spread of flu within a state. Therefore, outbreaks occurring in a single city could cause the state to display high activity levels.

**Weekly Influenza Activity Estimates Reported by State & Territorial Epidemiologists\***  
Week ending December 22, 2012 - Week 51



**Map above Right:** This map measures the geographic spread of influenza viruses, but does not measure the intensity of influenza activity.

### Additional resources:

- For additional information on influenza testing guidelines for the 2012-2013 season, go to: <http://healthoregon.org/fludata> and select 'Influenza Testing'
- CDC Weekly Surveillance Report: <http://www.cdc.gov/flu/weekly>
- FDA expands Tamiflu's use to treat children less than 1 year of age: <http://www.fda.gov/NewsEvents/Newsroom/PressAnnouncements/ucm333205.htm>