

Published December 30, 2011

Summary:

- During Week 51 (December 18th - 24th, 2011), OSPHL reported that 1 specimen tested positive for influenza A/H3 virus and another for 2009 A/H1.
- The level of influenza-like illness (ILI) detected by Oregon's outpatient ILI network has increased slightly but remains below the regional and national baselines for Week 51.
- For Week 51, no influenza-related hospitalizations* have been reported.
- Influenza activity remains low across the U.S. This includes emergency room surveillance reporting ILI visits.
- Respiratory syncytial virus (RSV) activity remains low in Oregon, with 8 (5%) of specimens testing positive** during Week 51.

* Based on hospitalization surveillance in Clackamas, Multnomah, and Washington counties only.

**Percent positivity based on data from Oregon's RSV Laboratory Surveillance System (number of positive RSV tests ÷ number of RSV tests performed)

Novel H3N2 swine-origin virus:

Last week, CDC confirmed an additional novel flu infection— a West Virginia child with a swine-origin H3N2 reassortant strain (H3N2v). This H3N2 variant is the same virus that infected 11 cases in 5 states recently, and includes the M gene from the 2009 H1N1 virus. The current total number of cases in the US is 12. The most recent case was a daycare contact of an H3N2v case reported previously. As a result of the H3N2v virus infections that have occurred thus far, CDC has issued guidance on preventing seasonal and H3N2v influenza in healthcare settings. The guidelines are the same as those issued for seasonal influenza:

<http://www.cdc.gov/flu/professionals/infectioncontrol/healthcaresettings.htm>.

There have been no cases of H3N2v detected in Oregon. We will continue to monitor the emergence of such strains by conducting PCR on specimens from our network of sentinel providers throughout the state, outbreaks, and hospitalized patients in the Portland metro area. Specimens submitted through these routes will be sent on to CDC for subtyping from the state public health lab.

Outpatient Influenza-like Illness (ILI):

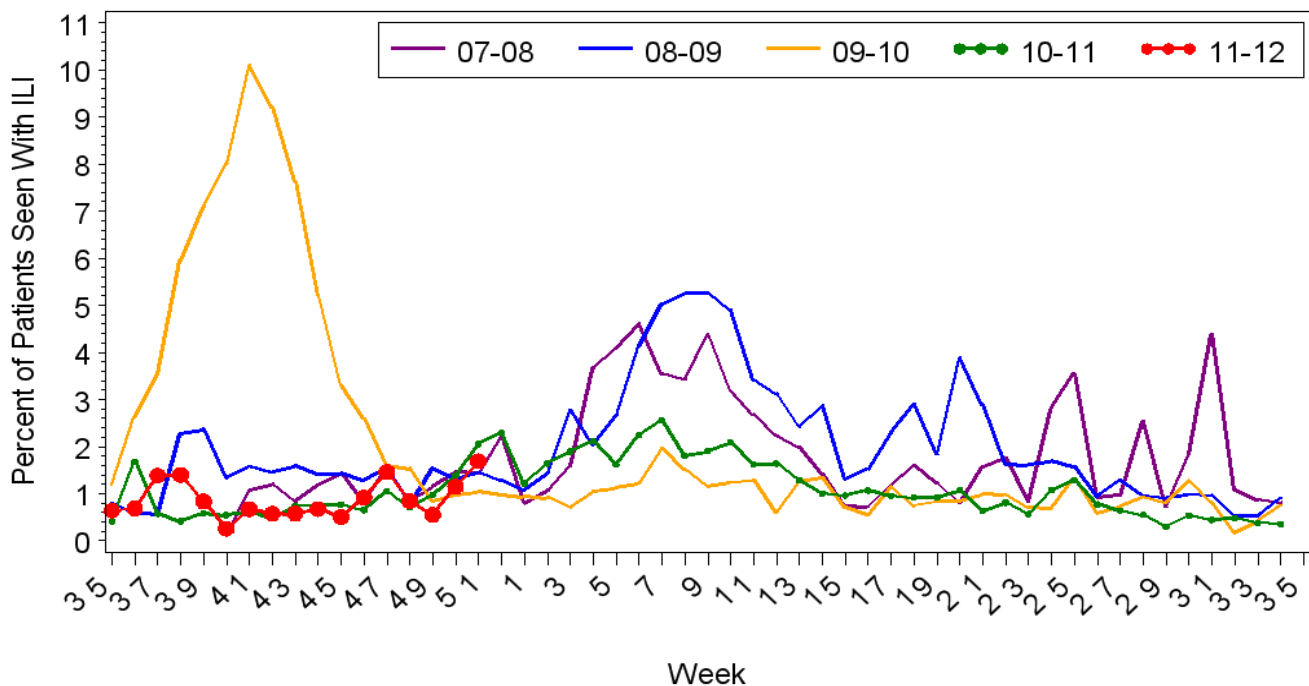
ILINet: Oregon's Outpatient Influenza-like Illness Surveillance Network

Oregon's outpatient influenza-like illness network is comprised of 25 voluntary healthcare providers from all across Oregon who report the number of patients with influenza-like illness (ILI) as well as total number of patient visits for each week during the surveillance season.

ILI is defined as fever ($\geq 100^{\circ}\text{F}$) and cough or sore throat. The number of patient visits and the percent of patients with ILI for the last 3 weeks are presented below. The average ILI reported during influenza weeks over the previous three seasons is 3.27% (although this figure is skewed upward by the H1N1 pandemic of 2009). The percent of outpatients seen with ILI for Week 51 was 1.69%, which is below Oregon's seasonal baseline.

2011-2012 Flu Season	Number of Patient Visits	Percent Patients with ILI	Number of Provider Reports
Week ending December 24 th	1239	1.69%	8
Week ending December 17 th	1998	1.15%	13
Week ending December 10 th	3590	0.55%	18

Oregon Outpatient Influenza-Like Illness Surveillance Network (ILINet) 30DEC11
Percent of Outpatients with Influenza-like Illness (ILI)
 2007-2008, 2008-2009, 2009-2010, 2010-2011, 2011-2012



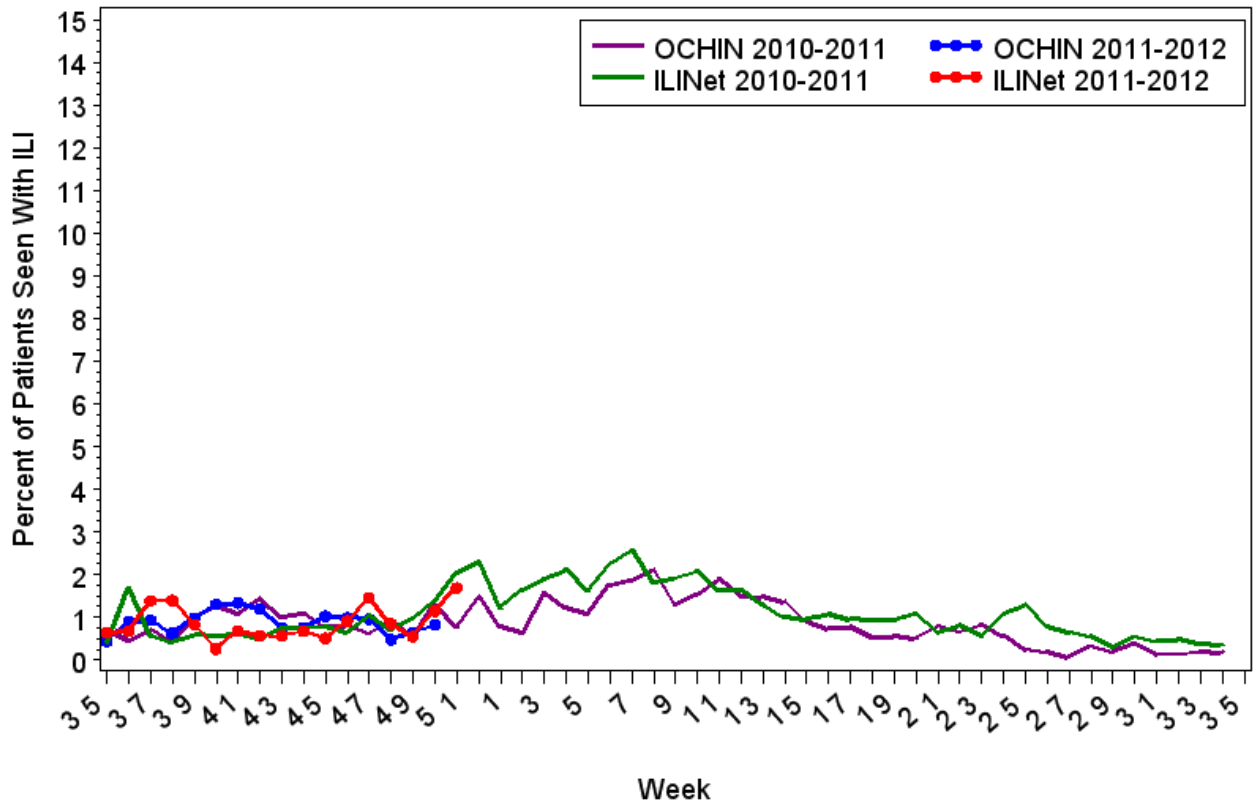
Surveillance weeks run from Sunday through Saturday
 Sentinel providers report the number of patients seen with influenza-like illness as well as total patients seen each week.

OCHIN Influenza-like Illness Surveillance:

Oregon Public Health Division also receives discharge diagnoses data from OCHIN Inc., a collaborative comprising 22 member organizations of federally qualified health centers (FQHC) and rural health centers in Oregon, representing 103 clinics throughout the state.

OCHIN reports of ILI are one week *behind* our other syndromic surveillance system reports. The percent of OCHIN patients seen with ILI was 0.84% during Week 50.

Oregon Outpatient Influenza-Like Illness (ILI) Surveillance
 ILINet & OCHIN
 2010-11 and 2011-12



Laboratory-Confirmed Influenza Associated Hospitalizations:

Laboratory-confirmed influenza-associated hospitalizations are reported by hospitals in the Portland Tri-County area (Clackamas, Multnomah, and Washington counties) for all ages where patients are admitted to the hospital and have tested positive for influenza by rapid test, direct or indirect fluorescent antibody test, culture, PCR, or serology. No influenza-related hospitalizations were reported during Week 51. Four influenza-related hospitalizations have been reported so far during the 2011-2012 season—three H3N2 infections and one 2009 H1N1 infection.

Laboratory Surveillance:

The Oregon State Public Health Laboratory (OSPHL) is performing influenza typing and sub-typing by PCR on specimens from the following groups of patients:

- Patients seen by Oregon Sentinel providers from ILINet & Influenza Incidence Surveillance Project (IISP).
- Patients hospitalized with influenza-like illness in the Portland Tri-County area (Multnomah, Clackamas and Washington counties) as part of the CDC-funded study, The

Influenza Hospitalization Network (FluSurv-NET). We encourage submission of specimens to OSPHL even if rapid influenza tests are negative or have not been performed.

- Patients identified as part of an outbreak of respiratory illness. Please report clusters of respiratory illness to the on-call ACDP epidemiologist at (971-673-1111), who will then make decisions about the need for testing at the OSPHL.

Oregon State Public Health Laboratory Specimen Type and Subtype, 2011-12

	Cumulative since October 1st, 2011					Current Week (Dec. 18- Dec 24, 2011)
	ILINet N (%)	IISP N (%)	Hospitalized* N (%)	Outbreaks N (%)	Total N (%)	Total N (%)
Influenza A						
2009 pH1N1	0	0	1(25)	0	1(1)	0
Seasonal A (H3)	1(10)	1(1)	3 (75)	0	5(5)	1
Influenza B	0	0	0	0	0	0
Respiratory Syncytial Virus	0	1(1)	0	0	1(1)	0
Parainfluenza type 1	1(10)	10(14)	0	0	11(12)	0
Parainfluenza type 2	0	1(1)	0	0	1(1)	0
Parainfluenza type 3	0	0	0	0	0	0
Adenovirus	0	5(7)	0	0	5(5)	0
Human Metapneumovirus	0	4(6)	0	0	4(4)	0
Pending	0	5(7)	0	0	5(5)	5
Undetected	8(80)	45(63)	0	6(100)	59(64)	3
Total Tested	10	72	4	6	92	9

*Although we make our best effort to only include hosp pts in our lab surv., submissions for hosp cases include some ER visits

For additional information on influenza testing guidelines for the 2011-12 season, go to: <http://healthoregon.org/fludata> and select 'Influenza Testing'.

Additional resources:

For more information on influenza in Oregon please see: <http://www.flu.oregon.gov/>
 CDC Weekly Surveillance Report: <http://www.cdc.gov/flu/weekly>