

Current Week's Data at a Glance: Apr 21—27, 2013 (Week 17)

Oregon Influenza-Like Illness (ILI) Activity Level¹	Minimal
Oregon Influenza Activity Geographic Spread²	Sporadic
Percent of outpatient visits for ILI	0.2%
Positive influenza tests³	0
Influenza-associated hospitalizations⁴	0
Reported ILI outbreaks	0
Influenza-associated pediatric mortality	0
Respiratory Syncytial Virus (RSV) activity⁵	13%

¹Levels are determined by CDC. Based on proportion of outpatient visits— levels include minimal, low, moderate, and high.

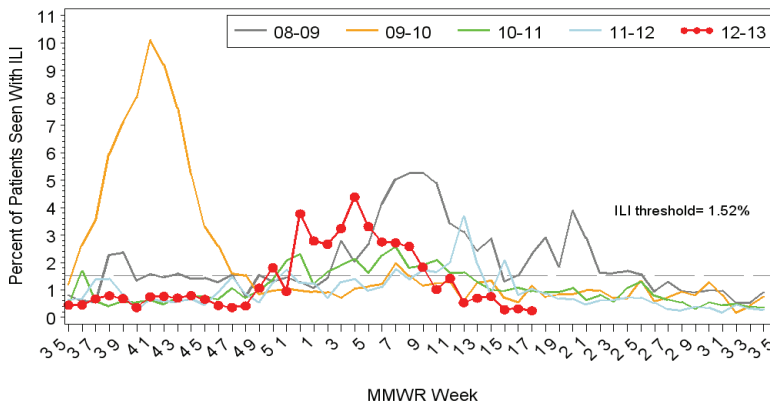
²Levels for geographic spread include no activity, sporadic, local, regional, and widespread.

³Reported by state public health lab (OSPHL) from outbreaks, tri-county hospitalizations, and sentinel ILI surveillance; includes only current week positive tests.

⁴Based on hospitalization surveillance in Clackamas, Multnomah, and Washington counties only.

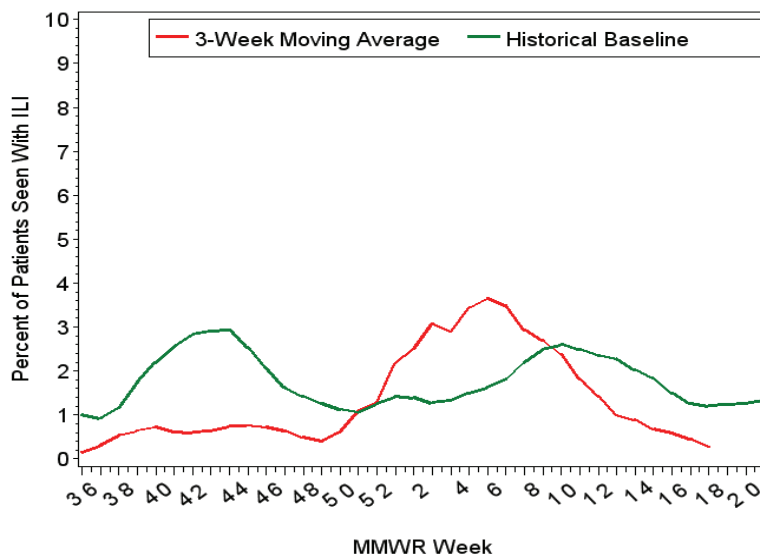
⁵Percent positivity based on data from Oregon's RSV Laboratory Surveillance System.

Oregon Outpatient Influenza-Like Illness Surveillance Network (ILINet) 03MAY13
Percent of Outpatients with Influenza-like Illness (ILI)
2008-2009, 2009-2010, 2010-2011, 2011-2012, 2012-2013



Surveillance weeks run from Sunday through Saturday
Sentinel providers report the number of patients seen with influenza-like illness as well as total patients seen each week.

Oregon Health Authority, Acute and Communicable Disease Prevention 03MAY13
Oregon Outpatient Influenza-Like Illness Surveillance Network (ILINet)
3-Week Moving Average of Percent of Outpatients with Influenza-like Illness (ILI)



ILINet: Oregon's Outpatient Influenza-like Illness Surveillance Network: Oregon's outpatient influenza-like illness (ILI) network comprises 22 voluntary healthcare providers from all across Oregon who report the number of patients with influenza-like illness as well as total number of patient visits for each week during the surveillance season. **The percent of outpatients seen with ILI for week 17 of 2013 was 0.2% which is below Oregon's seasonal threshold of 1.52%.***

Note: ILI is defined as fever ($\geq 100^{\circ}\text{F}$) and cough or sore throat. *The ILI baseline (threshold) is calculated as the mean percentage of visits for ILI during non-influenza weeks (weeks with $< 10\%$ of specimens at OSPHL testing positive for influenza) with two standard deviations, and is based on the three previous years of data.

The 3-week moving average for percent of outpatients seen with ILI in week 17 was 0.3%, which is below the historical baseline for this week.

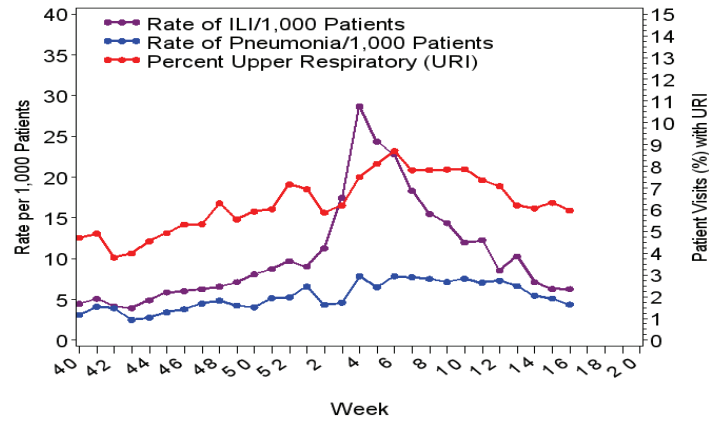
The 3-week moving average does not show actual weekly % ILI, but an average that includes the current week and preceding 2 weeks, and is used to smooth out fluctuations in the data. The historical baseline is the average 3-week moving averages over the preceding four flu seasons.

All FluBites data provided are preliminary, and may change as additional reports are received.

OCHIN Influenza-like Illness Surveillance: Oregon Public Health Division also receives discharge diagnoses data from OCHIN Inc., a collaborative comprising 22 member organizations of federally qualified health centers (FQHC) and rural health centers in Oregon, representing 103 clinics throughout the state. OCHIN data are 1 week *behind* ILINet data. **The rate of ILI per 1,000 OCHIN patients was 6.3 during week 16.**

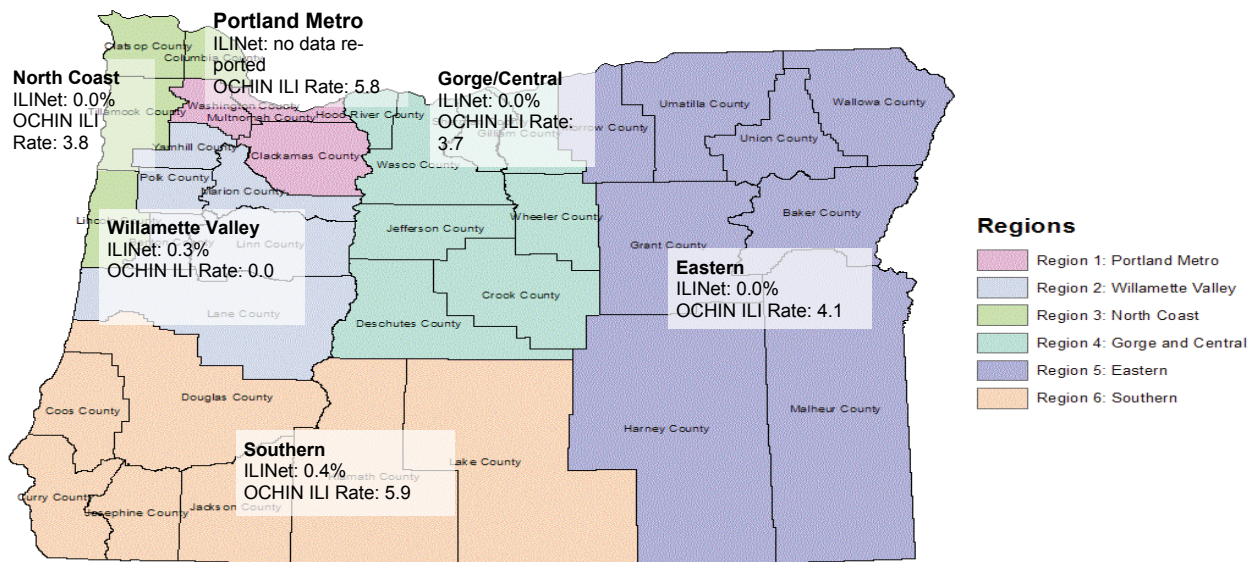
Note: OCHIN reports of ILI are one week *behind* ILINet reports. Respiratory illness categories for OCHIN data are based on ICD-9 diagnostic codes and reason for visit.

Oregon Outpatient ILI/URI/Pneumonia Surveillance, OCHIN 2012-2013

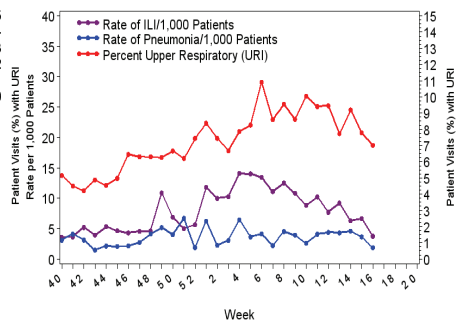
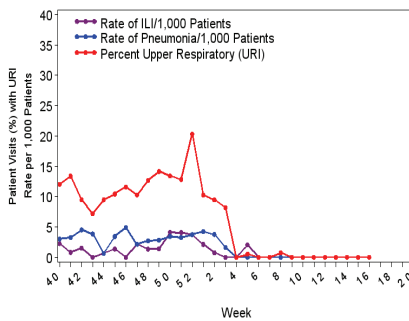
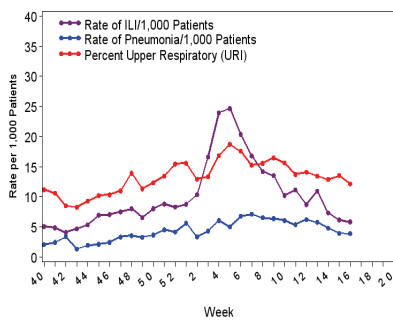


Categories are based on ICD-9 diagnosis codes, combinations of codes, and reason for visit.

ILI Activity by Region: ILINet (% ILI) and OCHIN ILI Rate



Region 1: Oregon Outpatient ILI/URI/Pneumonia Surveillance OCHIN 2012-2013 Region 2: Oregon Outpatient ILI/URI/Pneumonia Surveillance OCHIN 2012-2013 Region 3: Oregon Outpatient ILI/URI/Pneumonia Surveillance OCHIN 2012-2013



Categories based on ICD-9 diagnosis codes, combinations of codes, and reason for visit.

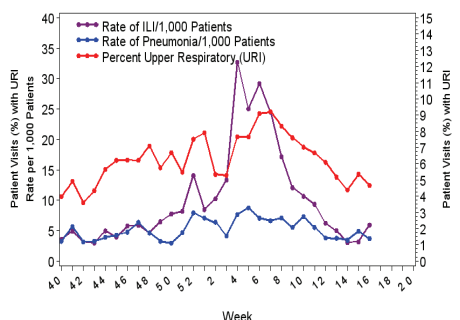
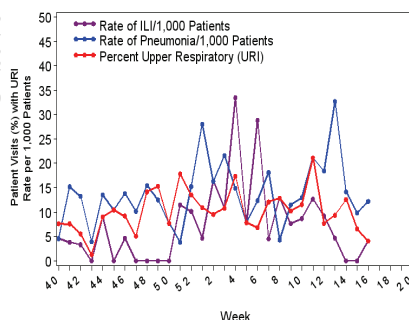
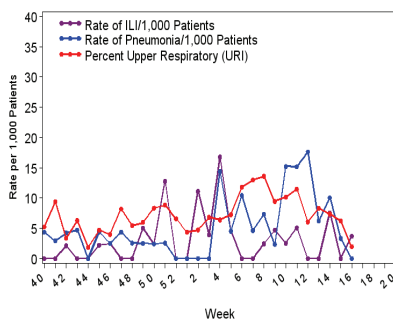
Categories are based on ICD-9 diagnosis codes, combinations of codes, and reason for visit.

Categories are based on ICD-9 diagnosis codes, combinations of codes, and reason for visit.

Region 4: Oregon Outpatient ILI/URI/Pneumonia Surveillance OCHIN 2012-2013

Region 5: Oregon Outpatient ILI/URI/Pneumonia Surveillance OCHIN 2012-2013

Region 6: Oregon Outpatient ILI/URI/Pneumonia Surveillance OCHIN 2012-2013



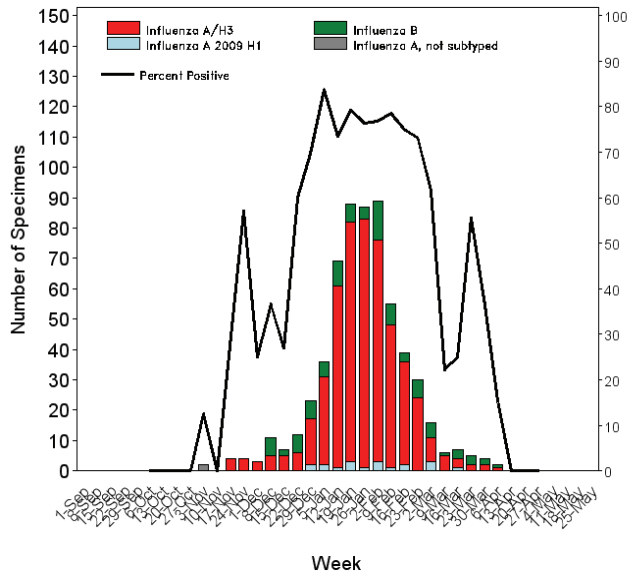
Categories are based on ICD-9 diagnosis codes, combinations of codes, and reason for visit.

Categories are based on ICD-9 diagnosis codes, combinations of codes, and reason for visit.

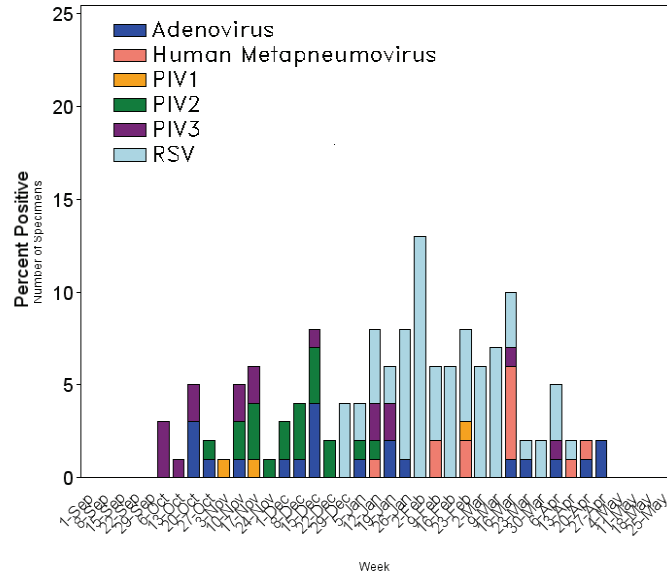
Categories are based on ICD-9 diagnosis codes, combinations of codes, and reason for visit.

Laboratory Surveillance:

Number and Percent Positive for Influenza by PCR, OSPHL 2012-2013



Viral Respiratory Pathogens PCR-Positive at OSPHL by Week, 2012-2013



The Oregon State Public Health Laboratory (OSPHL) is performing influenza typing and sub-typing by PCR on specimens from the following groups of patients:

- Patients seen by Oregon Sentinel providers from ILINet & Influenza Incidence Surveillance Project (IISP).
- Patients hospitalized with influenza-like illness in the Portland Tri-County area (Multnomah, Clackamas and Washington counties) as part of the CDC-funded study, The Influenza Hospitalization Network (FluSurv-NET). We encourage submission of specimens to OSPHL even if rapid influenza tests are negative or have not been performed.
- Patients identified as part of an outbreak of respiratory illness. Please report clusters of respiratory illness to the on-call ACDP epidemiologist at (971-673-1111), who will then make decisions about the need for testing at the OSPHL.

Tables 1 and 2 show the current week and cumulative totals (since **Oct. 1, 2012**) for influenza and other respiratory virus specimens tested at OSPHL.

Table 1. Oregon State Public Health Laboratory Influenza Specimen Type and Subtype, 2012-13. *

	Current Week	Cumulative
Influenza A	0	512 (52%)
2009 pH1N1	0	19 (2%)
Seasonal A H3	0	491 (49%)
Not subtyped	0	2 (<1%)
Influenza B	0	87 (9%)
Undetected	4	394 (40%)
Total Tested	4	993

Table 2. Oregon State Public Health Laboratory Non-Influenza Respiratory Viruses, 2012-13. *

	Current Week	Cumulative
Adenovirus	2 (50%)	21 (5%)
Parainfluenza type 1	0	3 (<1%)
Parainfluenza type 2	0	19 (5%)
Parainfluenza type 3	0	17 (4%)
Human Metapneumovirus	0	12 (3%)
RSV	0	70(18%)
Total Tested	4	394

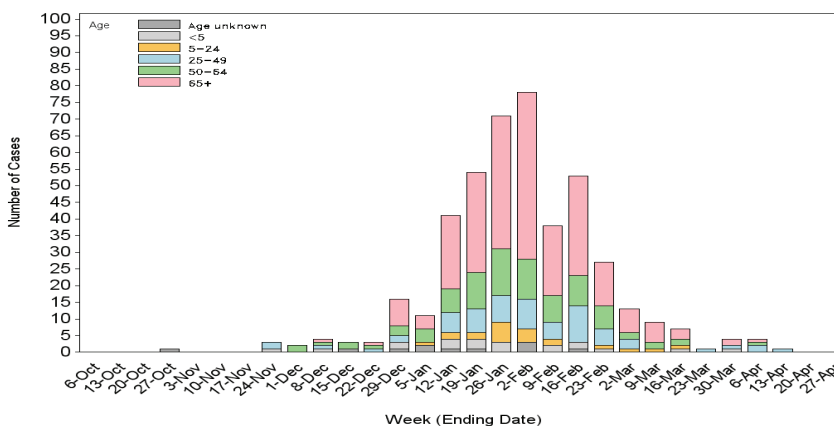
*Includes specimen testing from outbreaks, hospitalized cases, statewide ILINet sentinel provider surveillance, and the state Influenza Incidence Surveillance Project (IISP). Totals tested from Table 1 & 2 not mutually exclusive.

Tri-County Influenza Hospitalizations:

0 hospitalizations were reported in the Portland area (Clackamas, Multnomah, Washington Counties) during Week 17.

A cumulative total of 463 hospitalizations have been reported since October 1, 2012.

Portland Metro Area Influenza-Associated Hospitalizations by Week and Age Group, 2012-2013

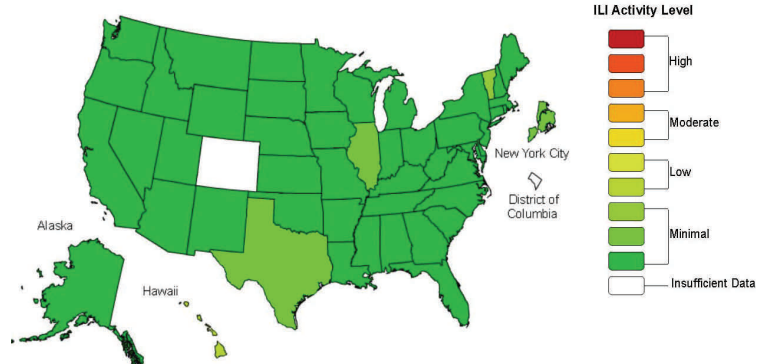


Outbreaks: 0 ILI outbreaks were reported for week 17. Between October 1, 2012, and April 27, 2013, 53 outbreaks involving ILI have been reported (including outbreaks of mixed etiology, like RSV and influenza); 37 so far have been laboratory confirmed as influenza virus.

National Data: During week 17 (April 21-27, 2013), influenza activity decreased in the United States.

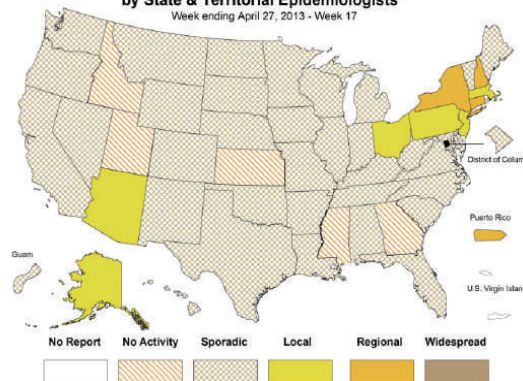
- **Viral Surveillance:** Of 2,746 specimens tested and reported by collaborating laboratories, 177 (6.5%) were positive for influenza.
- **Pneumonia and Influenza Mortality:** The proportion of deaths attributed to pneumonia and influenza (P&I) was below the epidemic threshold.
- **Influenza-Associated Pediatric Deaths:** Seven pediatric deaths were reported.
- **Influenza-Associated Hospitalizations:** A cumulative rate for the season of 44.2 laboratory-confirmed influenza-associated hospitalizations per 100,000 population was reported. Of reported hospitalizations, 50% were among adults 65 years and older.
- **Outpatient Illness Surveillance:** The proportion of outpatient visits for influenza-like illness (ILI) was 1.0%. This is below the national baseline of 2.2%. All 10 regions reported ILI below region-specific baseline levels. One state experienced low activity; 48 states and New York City experienced minimal activity, and the District of Columbia and 1 state had insufficient data.
- **Geographic Spread of Influenza:** Puerto Rico and 3 states reported regional influenza activity; 6 states reported local influenza activity; the District of Columbia, Guam, and 36 states reported sporadic

Influenza-Like Illness (ILI) Activity Level Indicator Determined by Data Reported to ILINet
2012-13 Influenza Season Week 17 ending Apr 27, 2013



Map above left: This map uses the proportion of outpatient visits to ILINet sentinel providers for influenza-like illness to measure the ILI activity level within a state. It does not, however, measure the extent of geographic spread of flu within a state. Therefore, outbreaks occurring in a single city could cause the state to display high activity levels.

Weekly Influenza Activity Estimates Reported by State & Territorial Epidemiologists*
Week ending April 27, 2013 - Week 17



Map above right: This map measures the geographic spread of influenza viruses, but does not measure the intensity of influenza activity.

Additional resources:

- CDC Weekly Surveillance Report: <http://www.cdc.gov/flu/weekly>
- Information about influenza A H7N9 in China: <http://www.cdc.gov/flu/avianflu/h7n9-virus.htm>, <http://www.who.int/csr/don/en/index.html>