

Current Week's Data at a Glance: Nov 17—Nov 23, 2013 (Week 47)

Oregon Influenza-Like Illness (ILI) Activity Level¹	Minimal
Oregon Influenza Activity Geographic Spread²	Sporadic
Percent of outpatient visits for ILI	0.50%
Positive influenza tests³	3
Influenza-associated hospitalizations⁴	1
Reported ILI/Influenza outbreaks	1
Influenza-associated pediatric mortality	0
Respiratory Syncytial Virus (RSV) activity⁵	2%

¹Levels are determined by CDC. Based on proportion of outpatient visits— levels include minimal, low, moderate, and high.

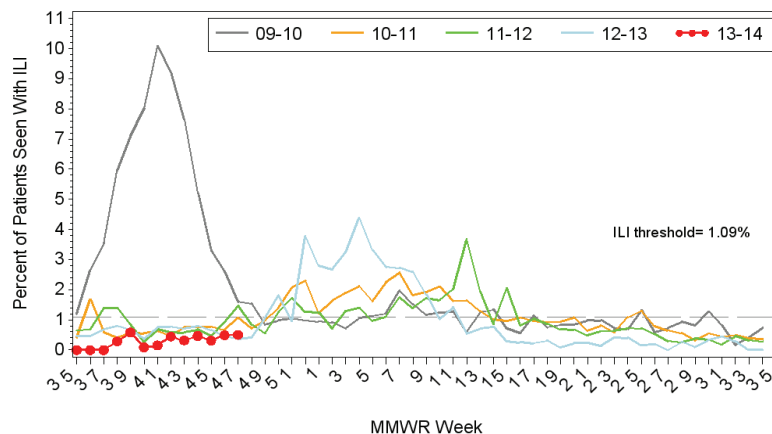
²Levels for geographic spread include no activity, sporadic, local, regional, and widespread.

³Reported by state public health lab (OSPHL) from outbreaks, tri-county hospitalizations, and sentinel ILI surveillance; includes only current week positive tests.

⁴Based on hospitalization surveillance in Clackamas, Multnomah, and Washington counties only.

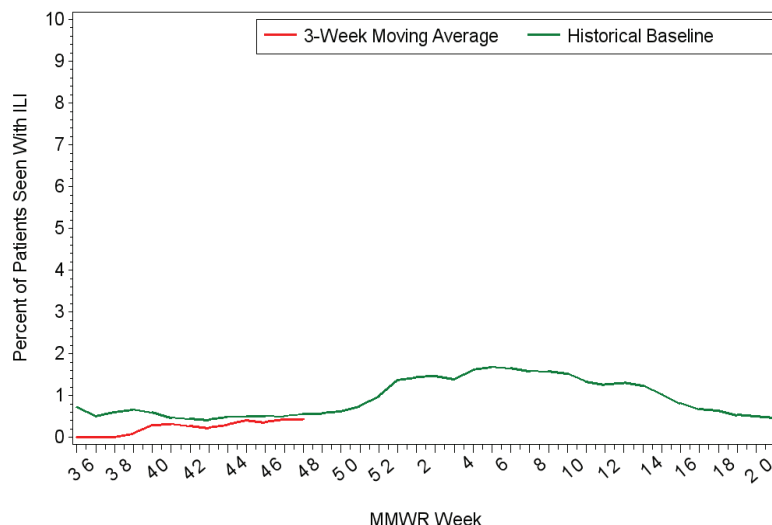
⁵Percent positivity based on data from Oregon's RSV Laboratory Surveillance System.

Oregon Health Authority, Acute and Communicable Disease Prevention 29NOV13
Oregon Outpatient Influenza-Like Illness Surveillance Network (ILINet)
Percent of Outpatients with Influenza-like Illness (ILI)
2009-2010, 2010-2011, 2011-2012, 2012-2013, 2013-2014



Surveillance weeks run from Sunday through Saturday
Sentinel providers report the number of patients seen with influenza-like illness as well as total patients seen each week.

Oregon Health Authority, Acute and Communicable Disease Prevention 29NOV13
Oregon Outpatient Influenza-Like Illness Surveillance Network (ILINet)
3-Week Moving Average of Percent of Outpatients with Influenza-like Illness (ILI)



ILINet: Oregon's Outpatient Influenza-like Illness Surveillance Network: Oregon's outpatient influenza-like illness (ILI) network comprises 22 voluntary healthcare providers from across Oregon who report the number of patients with influenza-like illness as well as total number of patient visits for each week during the surveillance season. **The percent of outpatients seen with ILI for week 47 of 2013 was 0.50% which is below Oregon's seasonal threshold of 1.09%.***

Note: ILI is defined as fever ($\geq 100^{\circ}\text{F}$) and cough or sore throat. *The ILI baseline (threshold) is calculated as the mean percentage of visits for ILI during non-influenza weeks (weeks 21-39) with two standard deviations, and is based on the three previous years of data.

The 3-week moving average for percent of outpatients seen with ILI in week 47 was 0.44%, which is below the historical moving average baseline for this week.

The 3-week moving average does not show actual weekly % ILI, but an average that includes the current week and preceding 2 weeks, and is used to smooth out fluctuations in the data. The historical baseline is the average 3-week moving averages over the preceding four flu seasons.

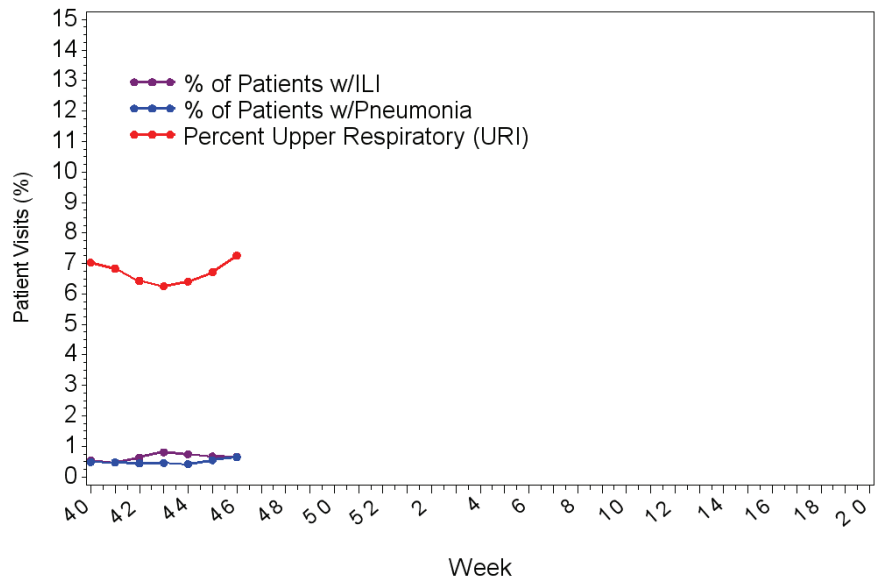
All FluBites data provided are preliminary, and may change as additional reports are received.

OCHIN Influenza-like Illness

Surveillance: Oregon Public Health Division also receives discharge diagnoses data from OCHIN Inc., a collaborative comprising 22 member organizations of federally qualified health centers (FQHC) and rural health centers in Oregon, representing 103 clinics throughout the state. **The percent of outpatient visits for ILI was 0.66% during week 46.**

Note: OCHIN reports of ILI are one week behind ILINet reports. Respiratory illness categories for OCHIN data are based on ICD-9 diagnostic codes and reason for visit.

Oregon Outpatient ILI/URI/Pneumonia Surveillance, OCHIN 2013-2014



Categories are based on ICD-9 diagnosis codes, combinations of codes, and reason for visit.

Laboratory Surveillance. The Oregon State Public Health Laboratory (OSPHL) is performing influenza typing and sub-typing by PCR on specimens from the following groups of patients:

- Patients seen by Oregon Sentinel providers from ILINet.
- Patients hospitalized with influenza-like illness in the Portland Tri-County area (Multnomah, Clackamas and Washington counties) as part of the CDC-funded study, The Influenza Hospitalization Network (FluSurv-NET).
- Patients identified as part of an outbreak of respiratory illness. Please report clusters of respiratory illness to the on-call ACDP epidemiologist at (971-673-1111), who will then make decisions about the need for testing at the OSPHL.

Tables 1 and 2 show the current week and cumulative totals (since Oct. 1, 2013) for influenza and other respiratory virus specimens tested at OSPHL.

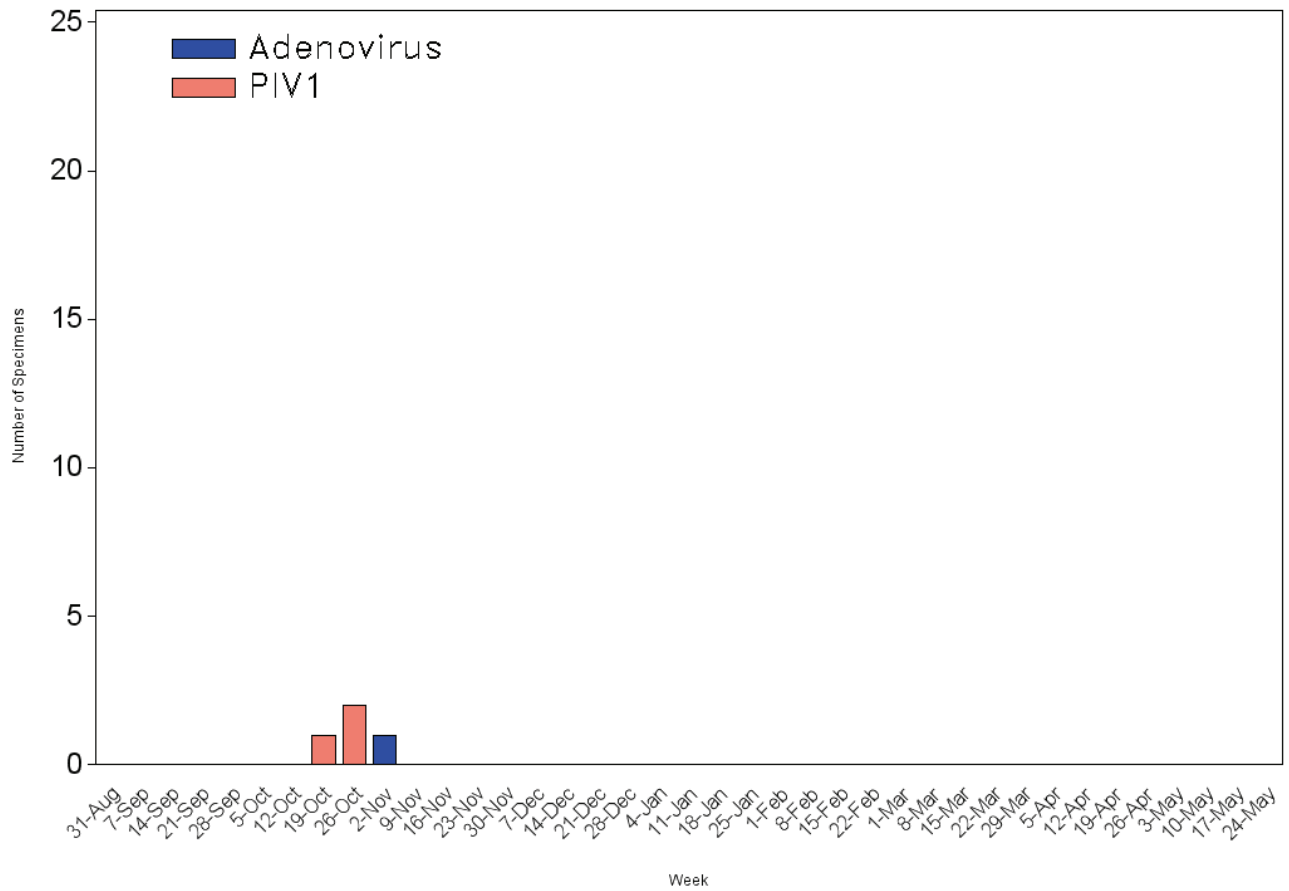
Table 1. Oregon State Public Health Laboratory Influenza Specimen Type and Subtype, 2013-14.

	Current Week	Cumulative
Influenza A	3 (43%)	12 (29%)
2009 pH1N1	3 (43%)	8 (20%)
Seasonal A H3	0	4 (10%)
Not subtyped	0	0
Influenza B	0	0
Undetected	4 (57%)	29 (70%)
Total Tested	7	41

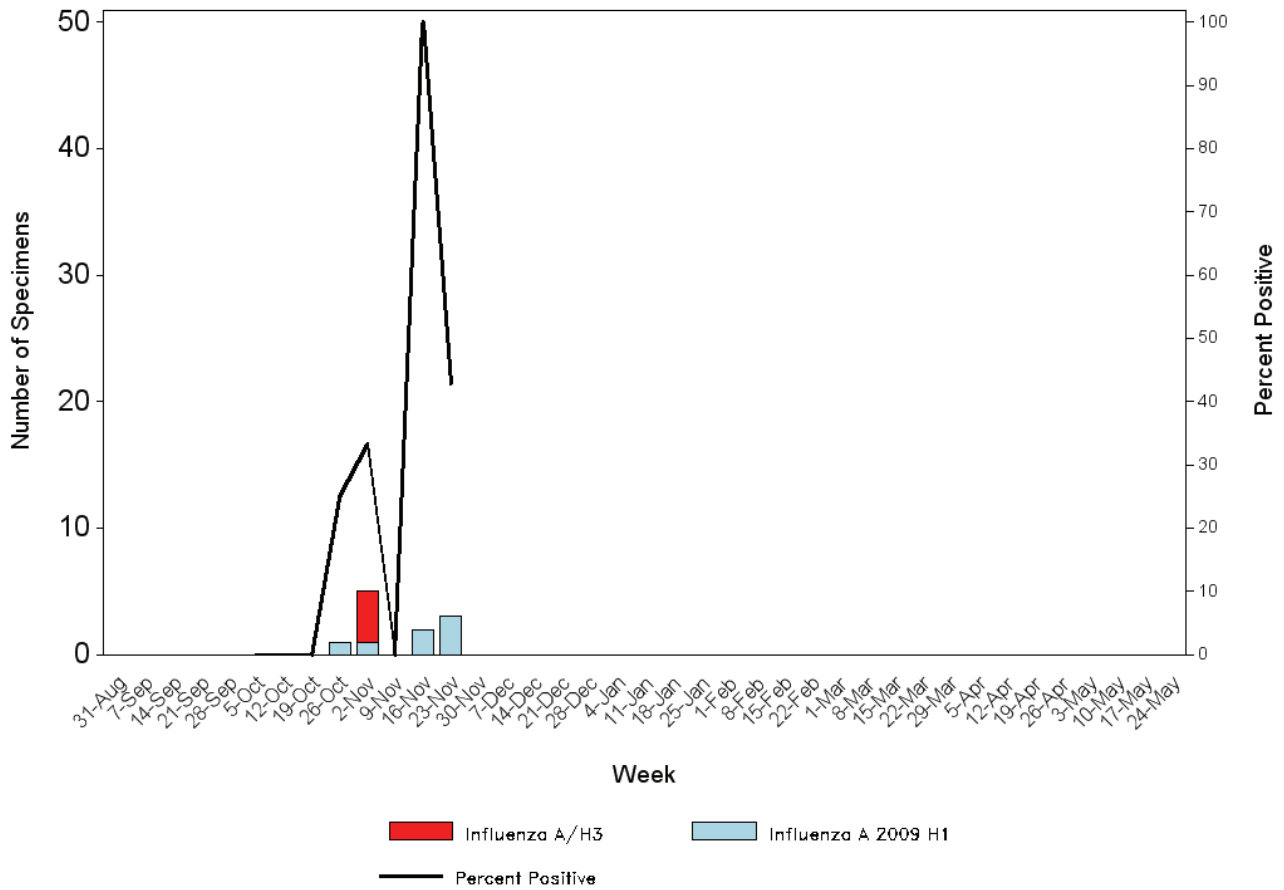
Table 2. Oregon State Public Health Laboratory Non-Influenza Respiratory Viruses, 2013-14 .

	Current Week	Cumulative
Adenovirus	0	1 (4%)
Parainfluenza type 1	0	3 (12%)
Parainfluenza type 2	0	0
Parainfluenza type 3	0	0
Human Metapneumovirus	0	0
RSV	4 (100%)	0
Total Tested	4	26

Viral Respiratory Pathogens PCR-Positive at OSPHL by Week, 2013-2014

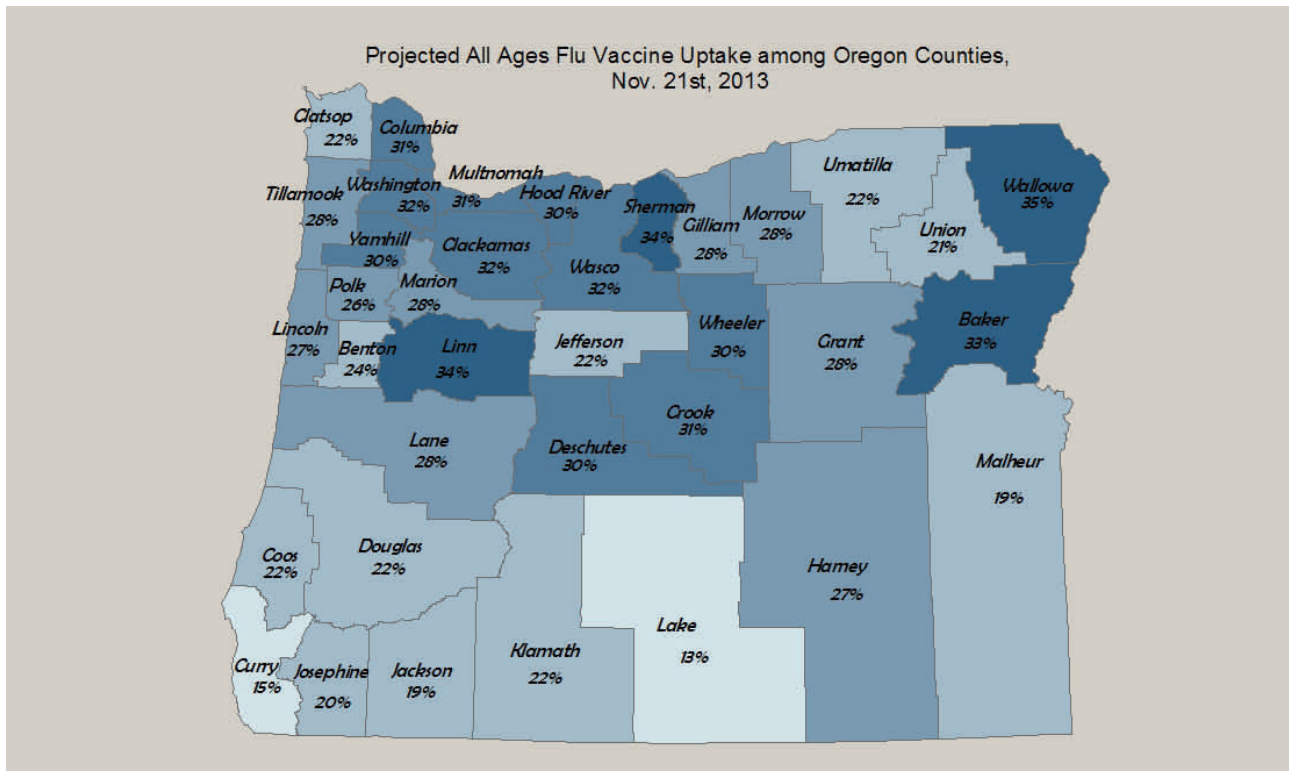
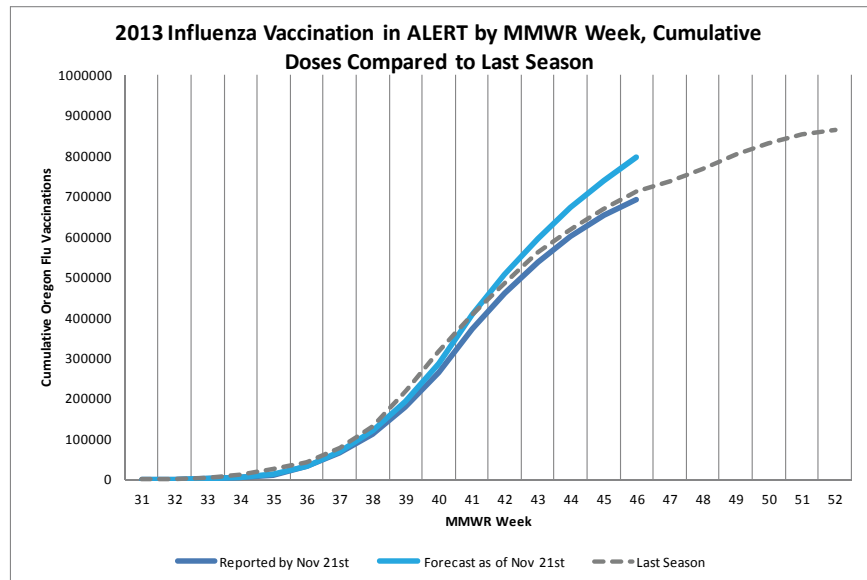
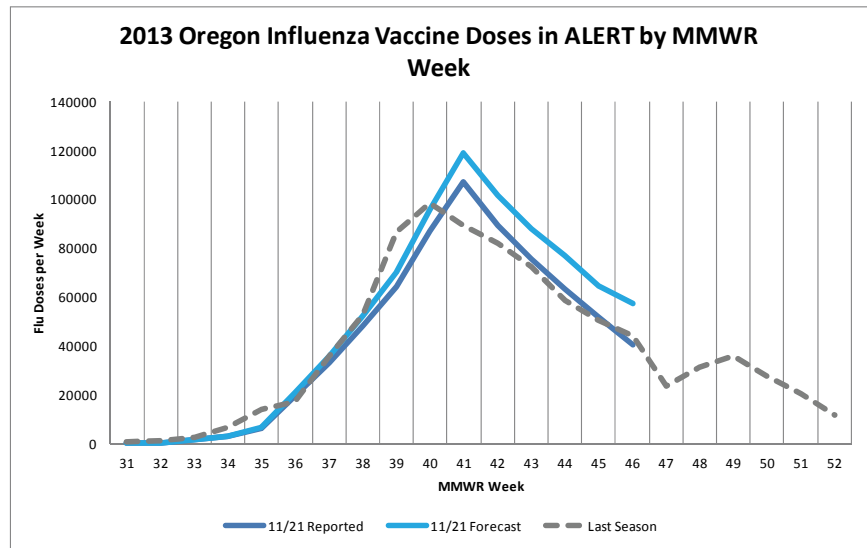


Number and Percent Positive for Influenza by PCR, OSPHL 2013-2014

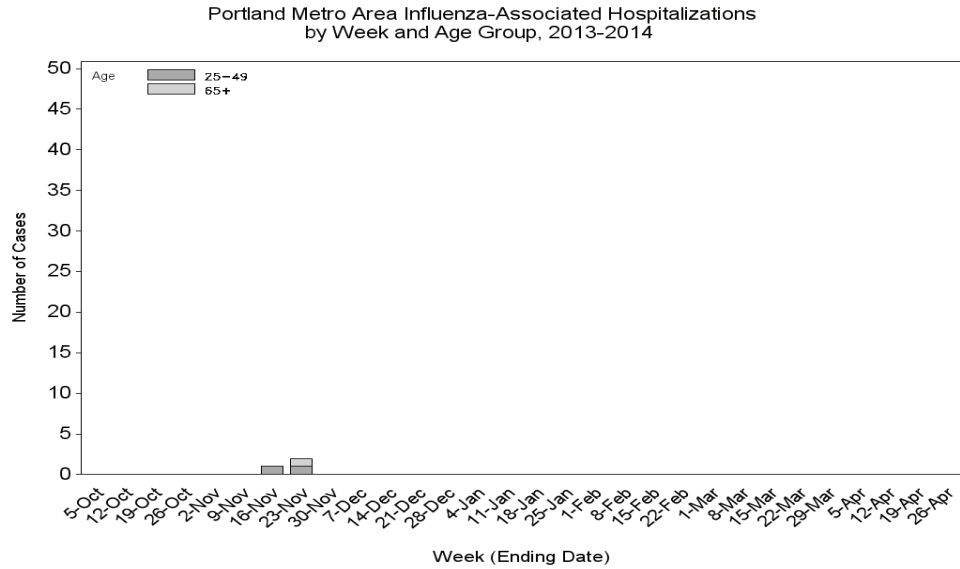


Vaccine Uptake in Oregon

As of week 46 (Nov 10th to 16th), the Oregon Immunization Program is forecasting that over 28% of Oregonians have received an influenza immunization for this season. Immunizations are more concentrated among older adults and children though, so there is still room to improve immunization rates among teens and adults. Going into Thanksgiving, immunization delivery typically drops then rebounds slightly in early December. A strong rebound for December and January immunizations occurred last year; whether such will happen again will not be clear for a few more weeks.



Hospitalizations: One hospitalization was reported for week 47. Four total hospitalizations have been reported since October 1.



Outbreaks: One influenza outbreak was reported for week 47. Three total ILI/influenza outbreaks have been reported since October 1.

Due to the Thanksgiving holiday, CDC FluView will be published on Monday, December 2. Check the CDC website for the latest edition: <http://www.cdc.gov/flu/weekly>