

## Current Week's Data at a Glance: January 15-21, 2012 (Week 03)

<b>Oregon Influenza-Like Illness (ILI) Activity Level<sup>1</sup></b>	<b>Minimal</b>
<b>Oregon Influenza Activity Geographic Spread<sup>2</sup></b>	<b>Sporadic</b>
<b>Percent of outpatient visits for ILI</b>	<b>1.1%</b>
<b>Positive influenza tests<sup>3</sup></b>	<b>1</b>
<b>Influenza-associated hospitalizations<sup>4</sup></b>	<b>0</b>
<b>Reported ILI outbreaks</b>	<b>0</b>
<b>Influenza-associated pediatric mortality</b>	<b>0</b>
<b>Respiratory Syncytial Virus (RSV) activity<sup>5</sup></b>	<b>14%</b>

<sup>1</sup>Based on proportion of outpatient visits— levels include minimal, low, moderate, and high

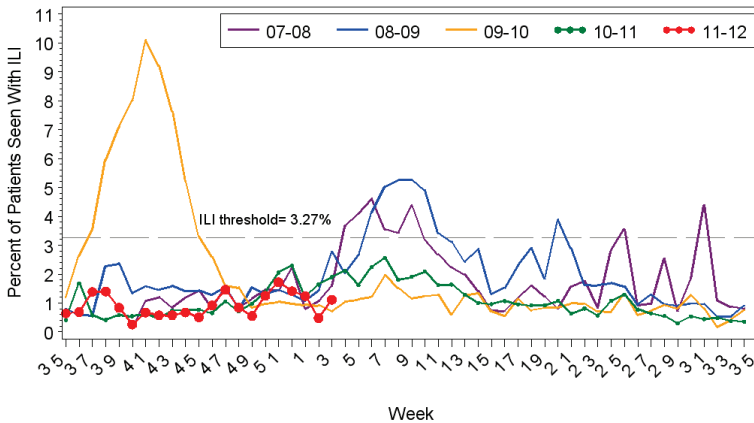
<sup>2</sup>Levels for geographic spread include no activity, sporadic, local, regional, and widespread

<sup>3</sup>Reported by state public health lab (OSPHL) from outbreaks, tri-county hospitalizations, and sentinel ILI surveillance; includes only current week positive tests

<sup>4</sup>Based on hospitalization surveillance in Clackamas, Multnomah, and Washington counties only.

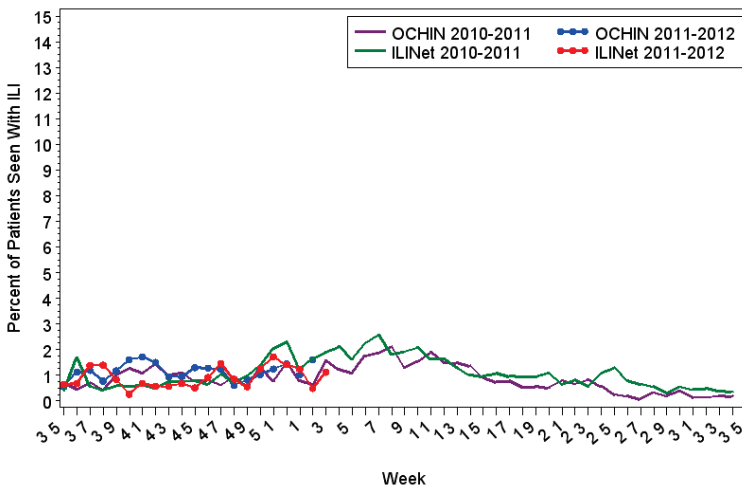
<sup>5</sup>Percent positivity based on data from Oregon's RSV Laboratory Surveillance System

Oregon Outpatient Influenza-Like Illness Surveillance Network (ILINet) 27 JAN 12  
Percent of Outpatients with Influenza-like Illness (ILI)  
2007-2008, 2008-2009, 2009-2010, 2010-2011, 2011-2012



Surveillance weeks run from Sunday through Saturday  
Sentinel providers report the number of patients seen with influenza-like illness as well as total patients seen each week.

Oregon Outpatient Influenza-Like Illness (ILI) Surveillance  
ILINet & OCHIN  
2010-11 and 2011-12



### ILINet: Oregon's Outpatient Influenza-like Illness Surveillance Network:

Oregon's outpatient influenza-like illness (ILI) network is comprised of 25 voluntary healthcare providers from all across Oregon who report the number of patients with influenza-like illness as well as total number of patient visits for each week during the surveillance season.

**The percent of outpatients seen with ILI for Week 03 of 2012 was 1.1%, which is below Oregon's seasonal baseline.**

ILI is defined as fever ( $\geq 100^{\circ}\text{F}$ ) and cough or sore throat. The average ILI reported during influenza weeks over the previous three seasons is 3.27% (although this figure is skewed upward by the H1N1 pandemic of 2009).

### OCHIN Influenza-like Illness Surveillance:

Oregon Public Health Division also receives discharge diagnoses data from OCHIN Inc., a collaborative comprising 22 member organizations of federally qualified health centers (FQHC) and rural health centers in Oregon, representing 103 clinics throughout the state.

OCHIN reports of ILI are one week *behind* our other syndromic surveillance system reports.

**The percent of OCHIN patients seen with ILI was 1.61% during Week 03, 2012.**

**Note:** the OCHIN denominator has been recalculated as of January 20, 2012.

**Laboratory Surveillance:**

The Oregon State Public Health Laboratory (OSPHL) is performing influenza typing and sub-typing by PCR on specimens from the following groups of patients:

- Patients seen by Oregon Sentinel providers from ILINet & Influenza Incidence Surveillance Project (IISP).
- Patients hospitalized with influenza-like illness in the Portland Tri-County area (Multnomah, Clackamas and Washington counties) as part of the CDC-funded study, The Influenza Hospitalization Network (FluSurvNET). We encourage submission of specimens to OSPHL even if rapid influenza tests are negative or have not been performed.
- Patients identified as part of an outbreak of respiratory illness. Please report clusters of respiratory illness to the on-call ACDP epidemiologist at (971-673-1111), who will then make decisions about the need for testing at the OSPHL.

Tables 1 and 2 show the current week and cumulative totals (since Oct. 1, 2011) for influenza and other respiratory virus specimens tested at OSPHL.

**Table 1. Oregon State Public Health Laboratory Influenza Specimen Type and Subtype, 2011-12. \***

	Current Week	Cumulative
<b>Influenza A</b>	0	8 (6%)
2009 pH1N1	0	1
Seasonal A H3	0	7
<b>Influenza B</b>	1 (12%)	1 (1%)
<b>Pending</b>	0	-
<b>Undetected<sup>1</sup></b>	7 (82%)	126 (93%)
<b>Total Tested</b>	8	135

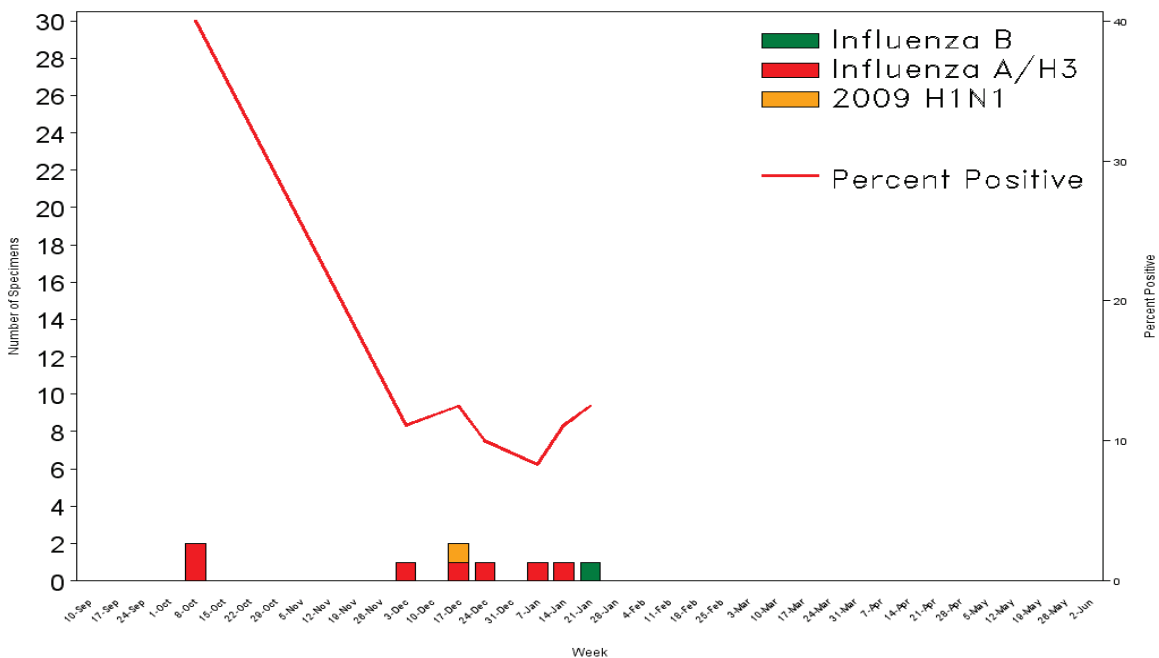
<sup>1</sup> Specimens where influenza not detected— other respiratory virus detection shown in Table 2.

**Table 2. Oregon State Public Health Laboratory Non-Influenza Respiratory Viruses, 2011-12. \***

	Current Week	Cumulative
<b>Adenovirus</b>	1 (12%)	8 (6%)
<b>Human Metapneumovirus</b>	2 (25%)	13 (10%)
<b>Parainfluenza type 1</b>	0	15 (11%)
<b>Parainfluenza type 2</b>	0	1 (1%)
<b>Parainfluenza type 3</b>	0	0
<b>Respiratory Syncytial Virus</b>	0	1 (1%)
<b>Total Tested</b>	8	131

\*Includes specimen testing from outbreaks, hospitalized cases, statewide ILINet sentinel provider surveillance, and the state Influenza Incidence Surveillance Project (IISP). Totals tested from Table 1 & 2 not mutually exclusive.

**Number and Percent Positive for Influenza by PCR  
OSPHL 2011-2012**



**Laboratory-Confirmed Influenza Associated Hospitalizations:** Laboratory-confirmed influenza-associated hospitalizations are reported by hospitals in the Portland Tri-County area (Clackamas, Multnomah, and Washington counties) for all ages where patients are admitted to the hospital and have tested positive for influenza by rapid test, direct or indirect fluorescent antibody test, culture, PCR, or serology. **No influenza-related hospitalizations were reported during Week 03, 2012.** Four influenza-related hospitalizations have been reported so far during the 2011-2012 season—three H3N2 infections and one 2009 H1N1 infection.

## National Data

### National Summary:

**U.S. Virologic Surveillance:** Of the 3,572 specimens tested by U.S. World Health Organization (WHO) and National Respiratory and Enteric Virus Surveillance System (NREVSS) collaborating laboratories and reported to CDC/Influenza Division, 175 (4.9%) were positive for influenza.

**Pneumonia and Influenza (P&I) Mortality Surveillance:** The proportion of deaths attributed to P&I was slightly above the epidemic threshold.

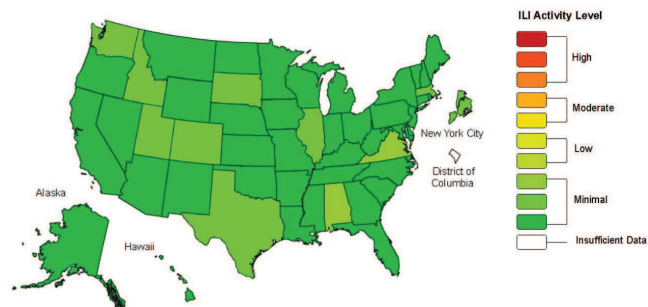
**Influenza-associated Pediatric Mortality:** One influenza-associated pediatric death was reported and was associated with an influenza B virus infection.

**Outpatient Illness Surveillance:** The proportion of outpatient visits for influenza-like illness (ILI) was 1.4%, which is below the national baseline of 2.4%. All 10 regions reported ILI below region-specific baseline levels. New York City and all 50 states experienced minimal ILI activity, and the District of Columbia had insufficient data.

**Geographic Spread of Influenza:** The geographic spread of influenza in four states was reported as regional; eight states reported local activity; Guam and 35 states reported sporadic activity; the U.S. Virgin Islands and three states reported no activity, and the District of Columbia and Puerto Rico did not report.

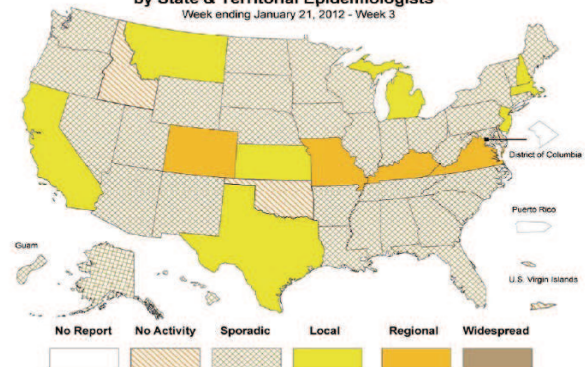
See the entire CDC *FluView* report at: <http://www.cdc.gov/flu/weekly>

**Influenza-Like Illness (ILI) Activity Level Indicator Determined by Data Reported to ILINet**  
2011-12 Influenza Season Week 3 ending Jan 21, 2012



**Map above left:** This map uses the proportion of outpatient visits to ILINet sentinel providers for influenza-like illness to measure the ILI activity level within a state. It does not, however, measure the extent of geographic spread of flu within a state. Therefore, outbreaks occurring in a single city could cause the state to display high activity levels.

**Weekly Influenza Activity Estimates Reported by State & Territorial Epidemiologists\***  
Week ending January 21, 2012 - Week 3



**Map above Right:** This map measures the geographic spread of influenza viruses, but does not measure the intensity of influenza activity.

### Additional resources:

For additional information on influenza testing guidelines for the 2011-12 season, go to: <http://healthoregon.org/fludata> and select 'Influenza Testing'.

For more information on influenza in Oregon please see: <http://www.flu.oregon.gov/>

CDC Weekly Surveillance Report: <http://www.cdc.gov/flu/weekly>

**Clinicians interested in becoming an ILINet sentinel provider:** please either email Patricia Newman at [Patricia.Newman@state.or.us](mailto:Patricia.Newman@state.or.us), or telephone at 971-673-1076. Reporting is simple, includes free PCR testing, and helps us monitor influenza activity including emerging influenza strains.