

Data at a Glance November 18-24, 2018 (Week 47)

	Current Week (47)	Previous Week (46)
Percentage of emergency department visits for ILI ¹	1.3%	1.2%
Percentage positive influenza tests ²	4.6%	1.5%
Influenza-associated hospitalizations ³	3	3
Reported ILI/influenza outbreaks	0	0
Influenza-associated pediatric mortality	0	0
Respiratory Syncytial Virus (RSV) activity ⁴	2.5%	1.6%

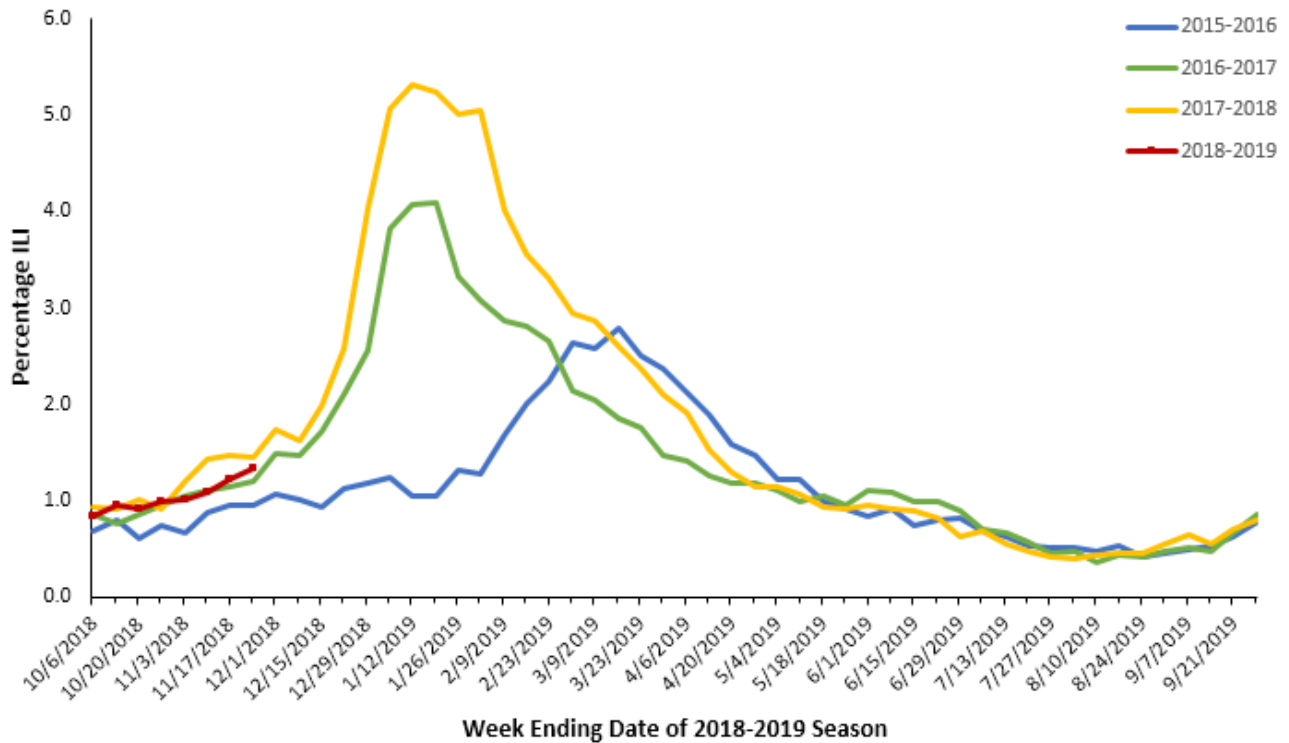
¹Based on Oregon ESSENCE Syndromic Surveillance. Data represent statewide aggregate percent.

²Percent positivity based on data from Oregon reporters to the National Respiratory and Enteric Virus Surveillance System (NREVSS)

³Based on hospitalization surveillance in Clackamas, Multnomah, and Washington counties only.

⁴Percent positivity based on data from Oregon's RSV Laboratory Surveillance System.

Figure 1. Percentage of ED Visits for ILI, Oregon ESSENCE Syndromic Surveillance, 2015–2016, 2016–2017, 2017–2018, 2018-2019



Oregon ESSENCE Syndromic Surveillance: Oregon Public Health tracks hospital emergency department (ED) visits throughout the state using the Oregon ESSENCE syndromic surveillance system. ESSENCE categorizes chief complaints into syndrome categories, which include ILI. Figure 1, above, displays percentages for all of Oregon during this flu season compared with the previous three flu seasons. **The percent of ED visits for ILI in all of Oregon was 1.3% during week 47, 2018.**

Laboratory Surveillance: The National Respiratory and Enteric Virus Surveillance System (NREVSS) is a laboratory-based system that monitors influenza and other respiratory viruses circulating the United States. More information is at CDC's [website](#).

Table 1 shows the current week and cumulative totals (since October 1, 2018) for influenza in specimens tested at the Oregon laboratories reporting to NREVSS. Figure 2 shows that **4.6% of specimens tested at Oregon labs were positive for influenza during week 47**, and the bar chart displays the number of influenza-positive tests by flu type and percent positivity.

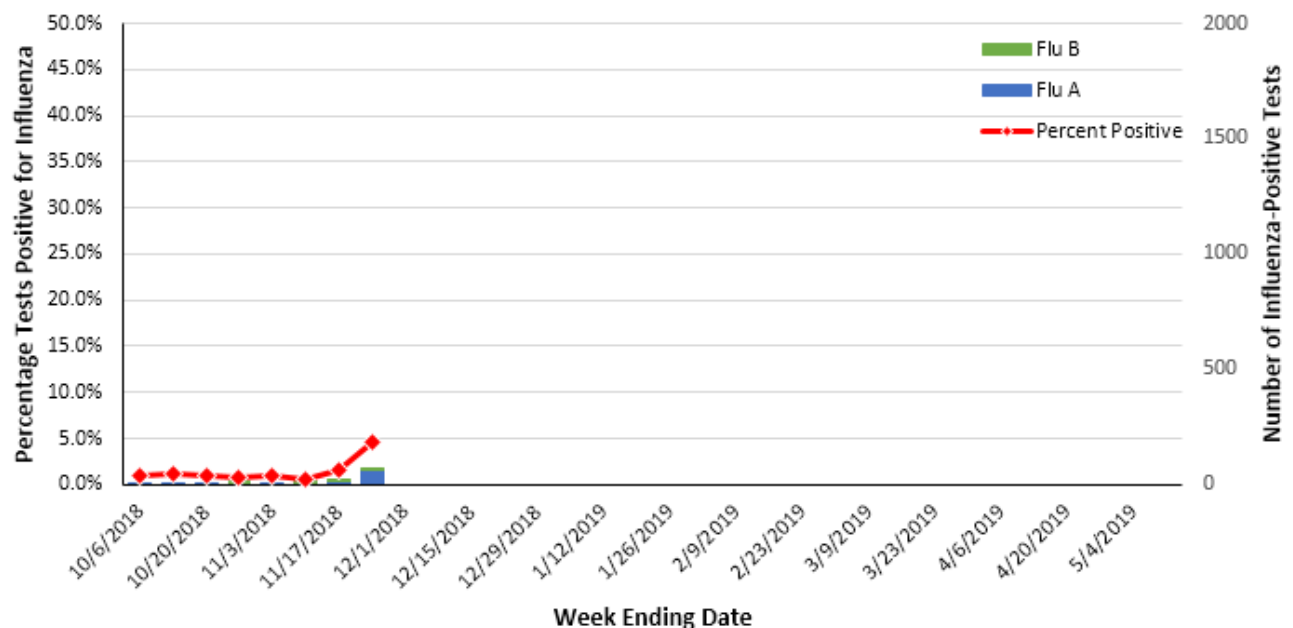
Participation by laboratories is voluntary. Current labs participating in NREVSS in Oregon include:

Legacy Emanuel Hospital and Health Center (Portland, OR), Oregon Health & Science University (Portland, OR), Providence Health (Oregon), Kaiser Permanente (Oregon), Veteran's Administration Hospital (Portland, OR), Bay Area Hospital (Coos Bay, OR), Curry Health Network (Brookings, OR), Mercy Medical Center (Roseburg, OR), Sky Lakes Medical Center (Klamath Falls, OR), Lake Health District, (Lakeview, OR), Rogue Valley Medical Center (SW Oregon), Good Shepherd Medical Center (Hermiston, OR), Mid-Columbia Medical Center (The Dalles, OR), Central Oregon Pediatric Associates (Central Oregon), Harney District Hospital (Burns, OR), St. Charles (Bend, OR), Columbia Memorial Hospital (Astoria, OR), Salem Hospital (Salem, OR), Willamette Valley Medical Center (McMinnville, OR) .

Table 1. Influenza Test Results in Oregon, NREVSS, 2018–2019.

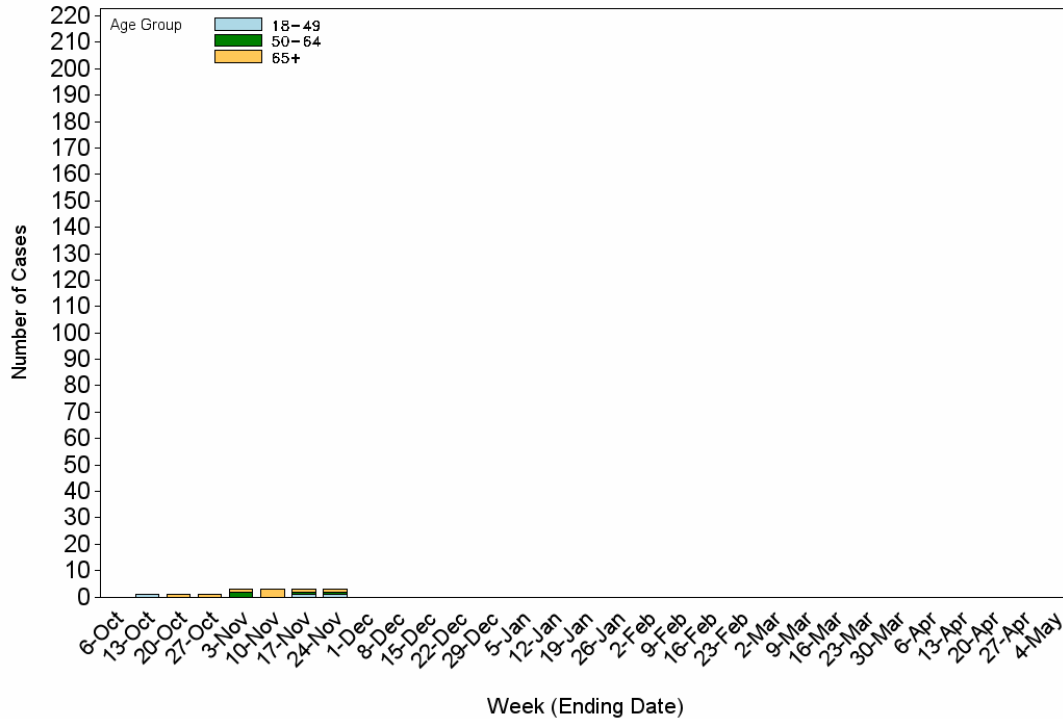
	Current Week	Cumulative
No. of specimens tested	1,413	8,485
No. of positive specimens (%)	65 (4.6%)	137 (1.6%)
<i>Positive specimens by type</i>		
Influenza A	62 (95.4%)	129 (94.2%)
Influenza B	3 (4.6%)	8 (5.8%)
Type Unavailable	0 (0%)	0 (0%)

**Figure 2. Oregon Influenza Surveillance
Percent Positive Influenza Tests by Week, NREVSS
2018-2019 Season**



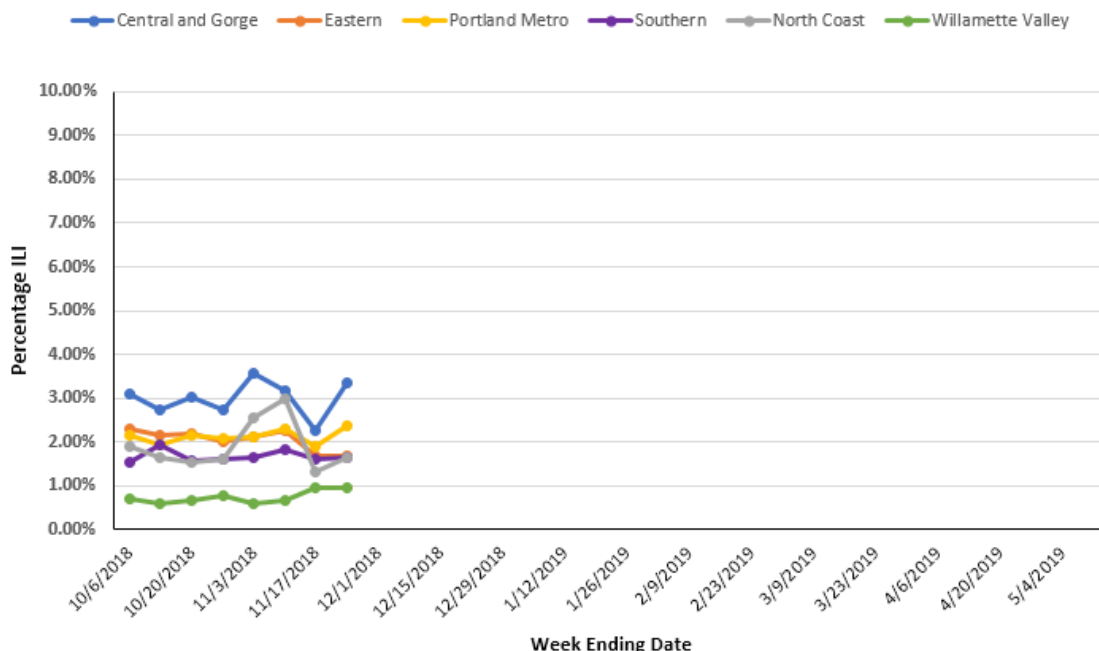
Hospitalizations: In Clackamas, Multnomah, and Washington counties three influenza-associated hospitalizations were reported during week 47 of 2018. To date, all 15 cases have been positive for flu A (100%). Of the eight that have been subtyped, 5 (62.5%) are 2009 H1N1 and 3 (37.5%) are H3.

Figure 3. Portland Metro Area Influenza-Associated Hospitalizations by Week and Age Group, 2018-2019 Season



Oregon’s Outpatient Influenza-like Illness Surveillance: Oregon’s outpatient influenza-like illness (ILI) surveillance comprises 17 voluntary reporting outpatient providers, 64 emergency departments and urgent care clinics reporting to ESSENCE, and 183 OCHIN clinics from across Oregon. The percent of outpatients seen with ILI across the state during week 47 of 2018 was 2.0%. Regionally, the percent was highest in the Central and Gorge area (3.4%) and lowest in the Willamette Valley (1.0%).

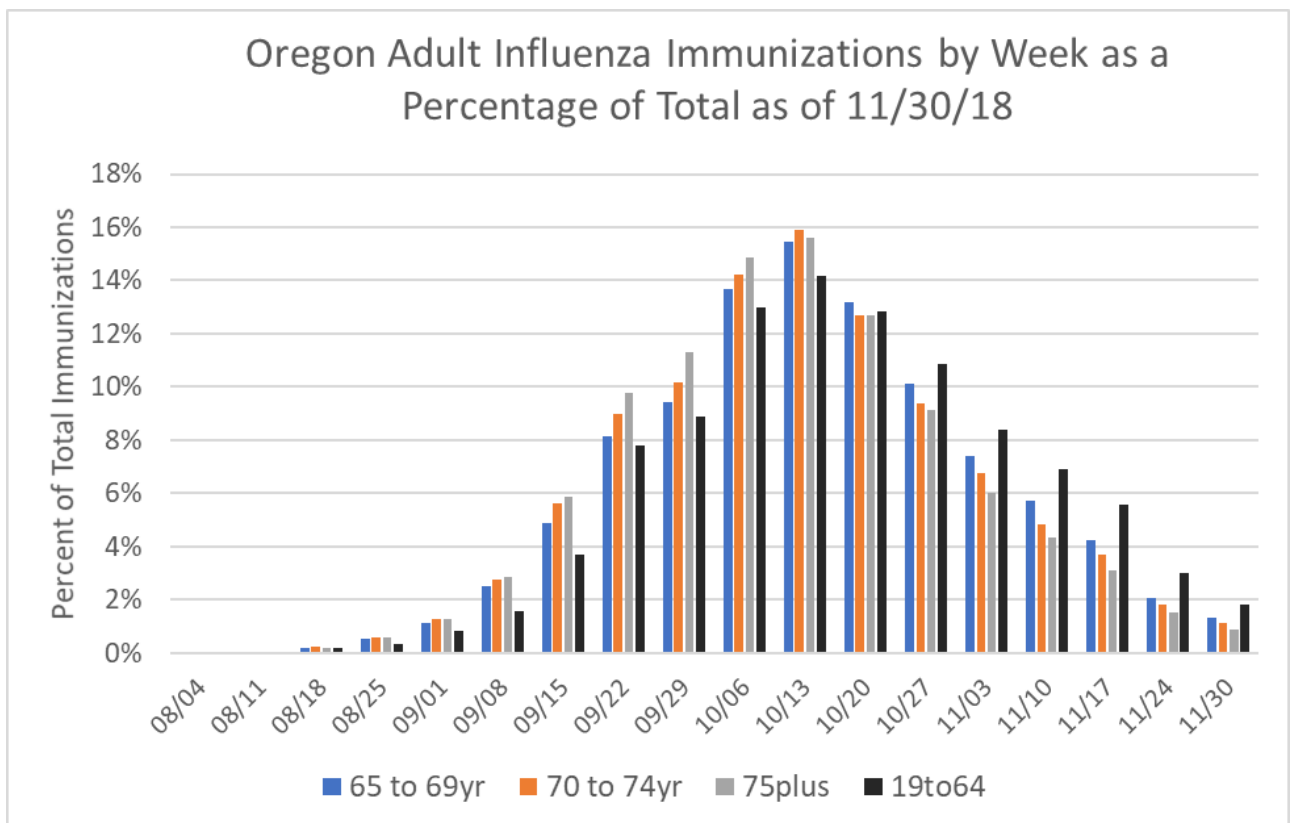
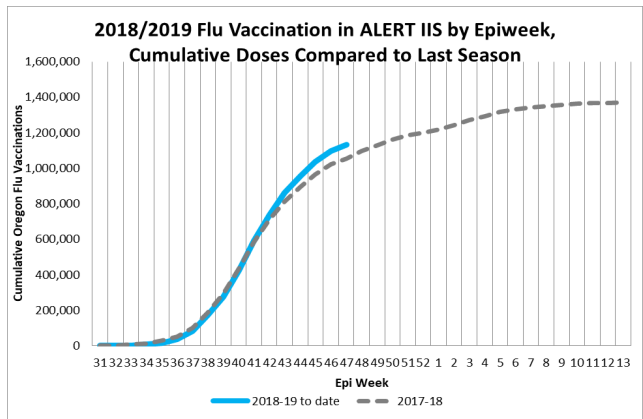
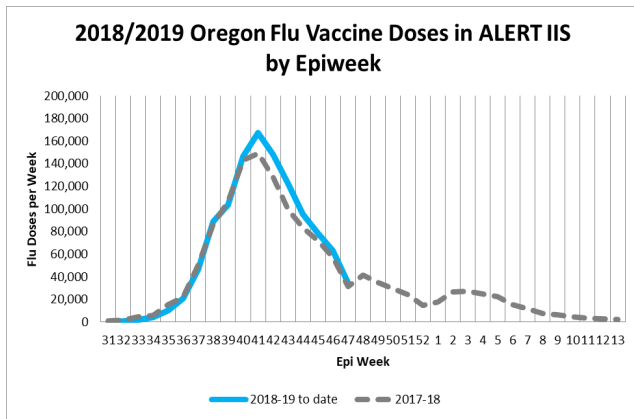
Figure 5. Percentage of Visits for ILI at Outpatient Clinics & Emergency Departments, by Oregon Region, 2018-2019



Influenza Outbreaks: There has been one influenza outbreak reported to the Oregon Health Authority in the 2018–2019 flu season.

Vaccination Data: This week's reporting is based on ALERT IIS data through Epiweek 47 (November 24th). As of this date, the ALERT IIS has received over 1.1 million immunization reports of seasonal influenza immunizations for Oregon residents. Influenza immunization totals are trending slightly above last season. As a caveat, while most immunizations are reported quickly and electronically to ALERT IIS, some reporting is delayed- current weekly totals may be adjusted upward later.

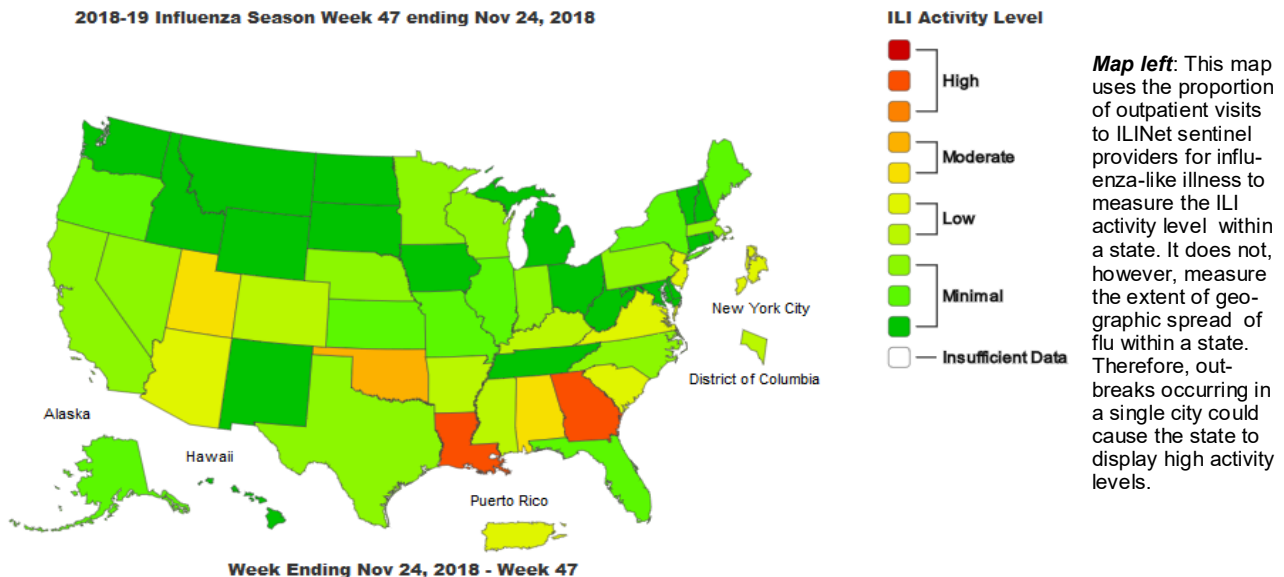
A topic of concern for influenza immunization is whether there is a disadvantage to immunizing seniors and vulnerable populations early in the season, rather than waiting until late October or November. It is possible that some degree of protection from vaccination may drop or 'wane' as time passes. However immunizing seniors at the start of the season also provides protection against the possibility of having an early influenza season. For this week, we are presenting a chart of senior influenza immunization by week for the 2018-19 season to date. In comparison to non-senior adults, seniors by this data tend to receive earlier influenza immunizations.



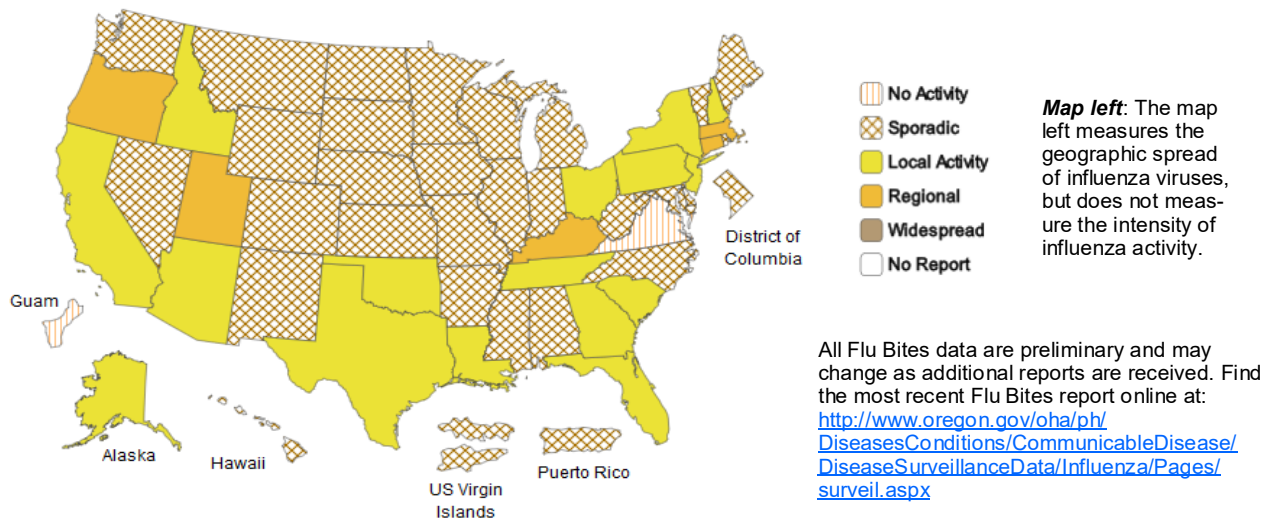
US Data (from CDC FluView): Influenza activity in the United States remains low, although small increases in activity were reported. Influenza A(H1N1)pdm09, influenza A(H3N2), and influenza B viruses continue to co-circulate, with influenza A(H1N1)pdm09 viruses reported most commonly by public health laboratories since September 30, 2018. Below is a summary of the key influenza indicators for the week ending November 17, 2018:

- **Viral Surveillance:** Influenza A viruses have predominated in the United States since the beginning of July. The percentage of respiratory specimens testing positive for influenza in clinical laboratories was low.
- **Virus Characterization:** The majority of influenza viruses characterized antigenically and genetically are similar to the cell-grown reference viruses representing the 2018–2019 Northern Hemisphere influenza vaccine viruses.
- **Antiviral Resistance:** All viruses tested since late May show susceptibility to the antiviral drugs oseltamivir, zanamivir, and peramivir.
- **Influenza-like Illness Surveillance:** The proportion of outpatient visits for influenza-like illness (ILI) remained at 1.9%, which is below the national baseline of 2.2%. Two of 10 regions reported ILI at or above their region-specific baseline level.
- **ILI State Activity Indicator Map:** Three states experienced moderate ILI activity, New York City and eight states experienced low ILI activity; the District of Columbia and 39 states experienced minimal ILI activity; and Puerto Rico had insufficient data.
- **Geographic Spread of Influenza:** The geographic spread of influenza in one state was reported as regional; Guam and 14 states reported local activity; and the District of Columbia, Puerto Rico, the U.S. Virgin Islands and 35 states reported sporadic activity.
- **Pneumonia and Influenza Mortality:** The proportion of deaths attributed to pneumonia and influenza (P&I) was below the system-specific epidemic threshold in the National Center for Health Statistics (NCHS) Mortality Surveillance System.
- **Influenza-associated Pediatric Deaths:** One influenza-associated pediatric death was reported to CDC for week 46.

2018-19 Influenza Season Week 47 ending Nov 24, 2018



Week Ending Nov 24, 2018 - Week 47



All Flu Bites data are preliminary and may change as additional reports are received. Find the most recent Flu Bites report online at: <http://www.oregon.gov/oha/ph/DiseasesConditions/CommunicableDisease/DiseaseSurveillanceData/Influenza/Pages/surveil.aspx>