

TRAFFIC FLOW MAP 2009

OREGON STATE HIGHWAY SYSTEM

VOLUMES SHOWN ARE ALL VEHICLE
ANNUAL AVERAGE DAILY TRAFFIC

6900 AADT Volume
Automatic Traffic Recorder Station
24-016 Station Number

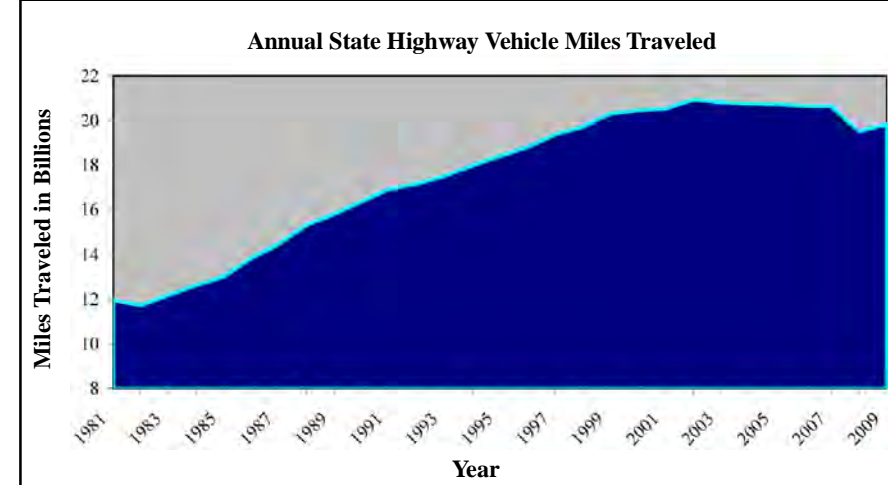


Traffic Flow Segments

AAAT

- 0 - 1000
- 1001 - 2500
- 2501 - 5000
- 5001 - 10000
- 10001 - 15000
- 15001 - 20000
- 20001 - 30000
- 30001 - 50000
- 50001 - 75000
- 75001 +

Interstate - US Route - OR Route



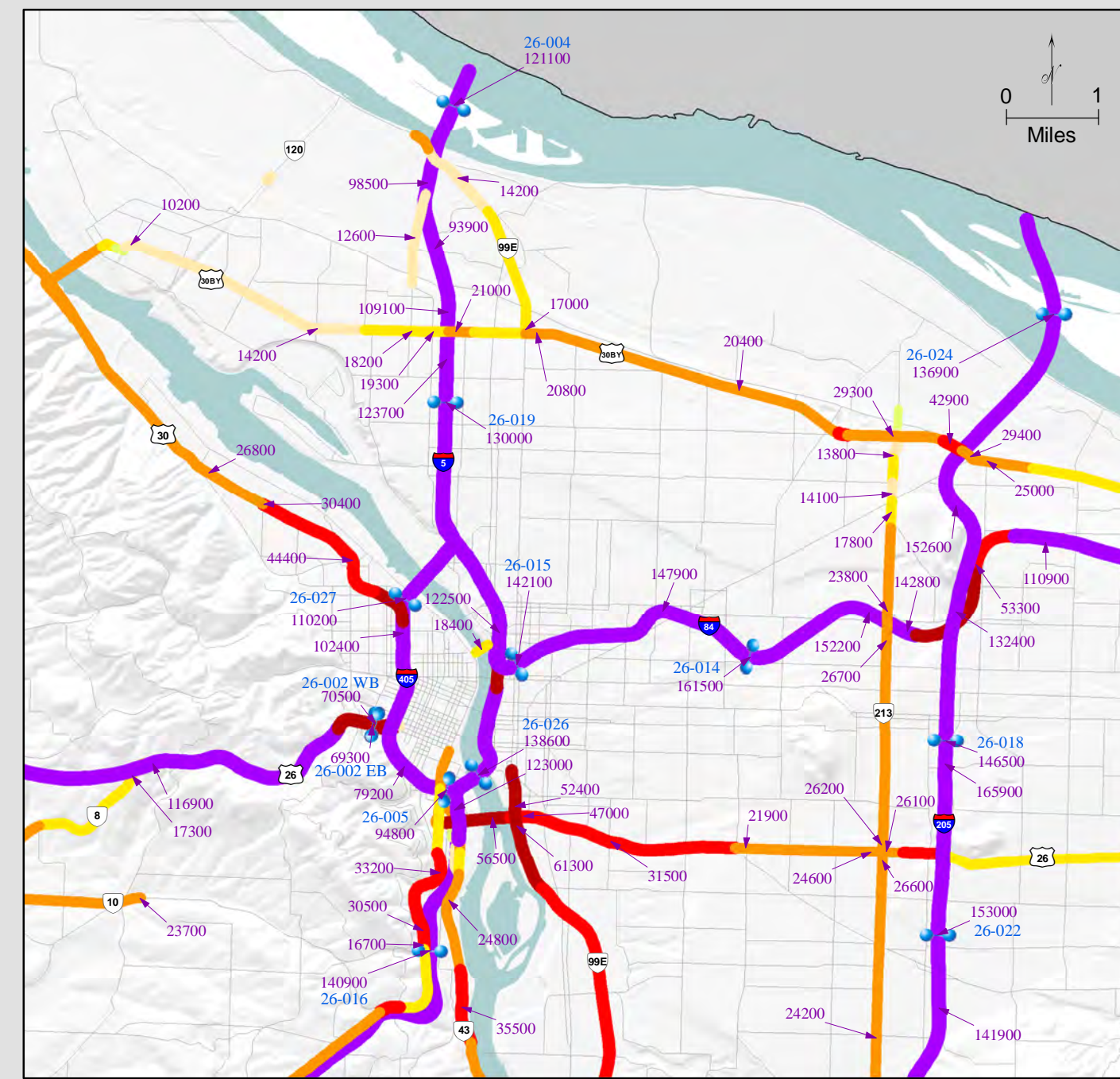
2009 MILEAGE AND VMT SUMMARY

State Highways	8,049 (13.6%) road miles = 19.8 (58.2%) Billion AVMT
Other Roads (County, City, Tribal, Etc.)	51,089 (86.4%) road miles = 14.2 (41.8%) Billion AVMT
Oregon Total	59,129 road miles = 34.0 Billion AVMT

(BLM mileage not included in total)

DISCLAIMER:
This product is for informational purposes only and may not have been prepared for or be suitable for legal, engineering or surveying purposes. Users of this information should review or consult the primary data and information sources to ascertain the suitability of the information.

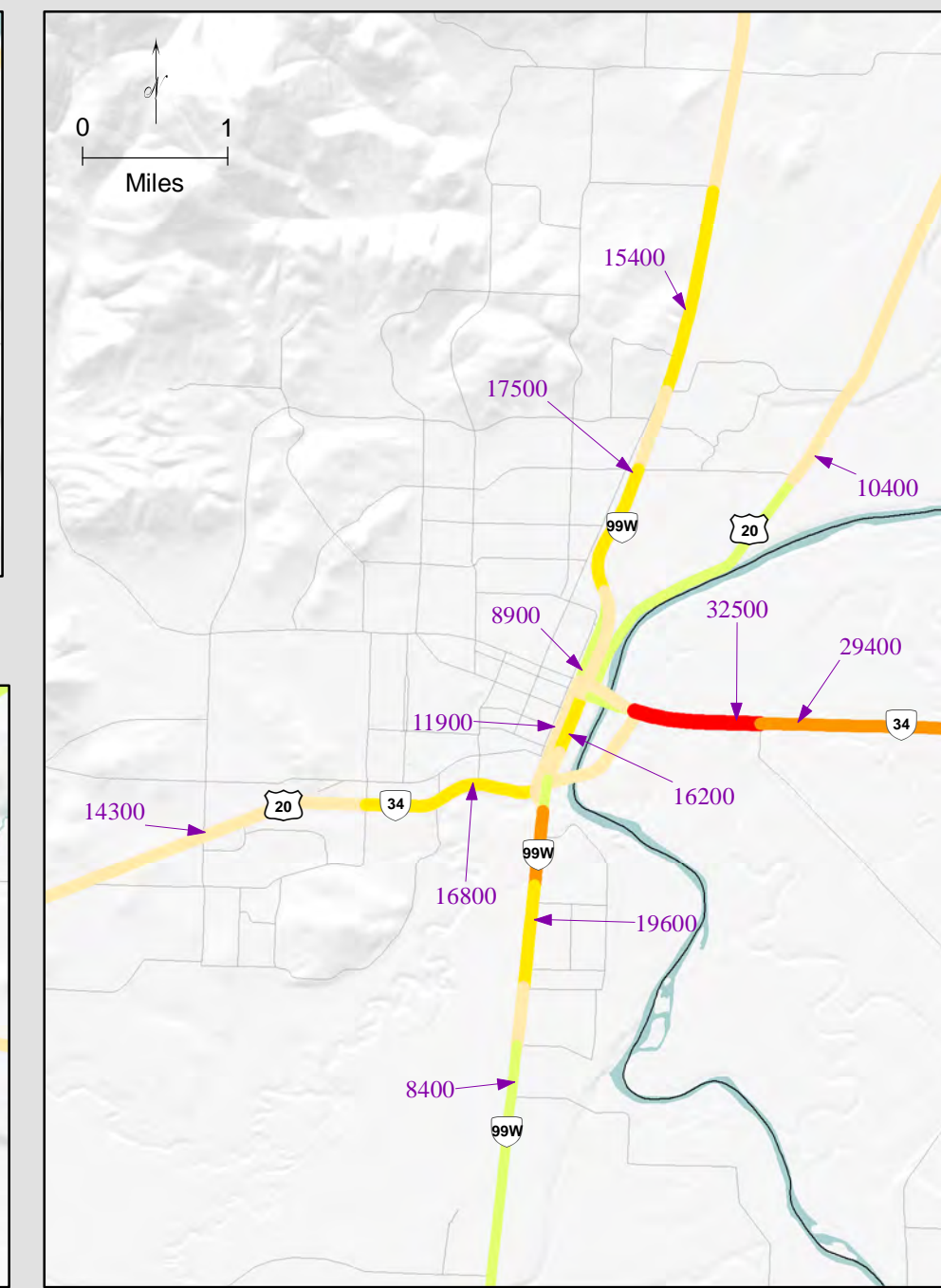
PORTLAND



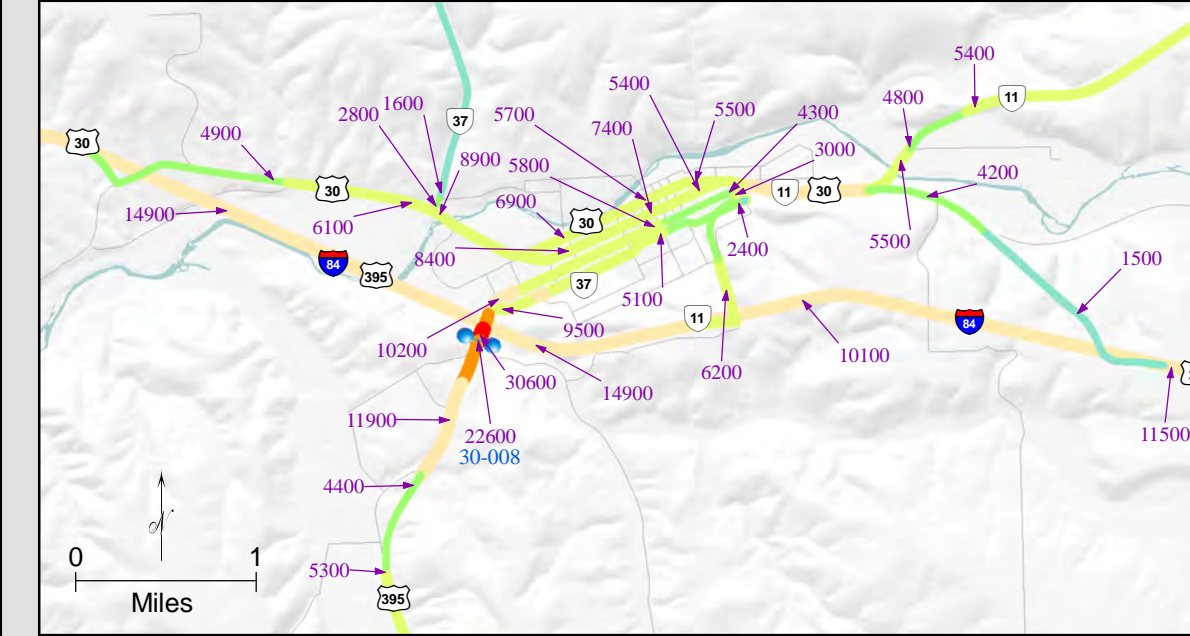
THE DALLES



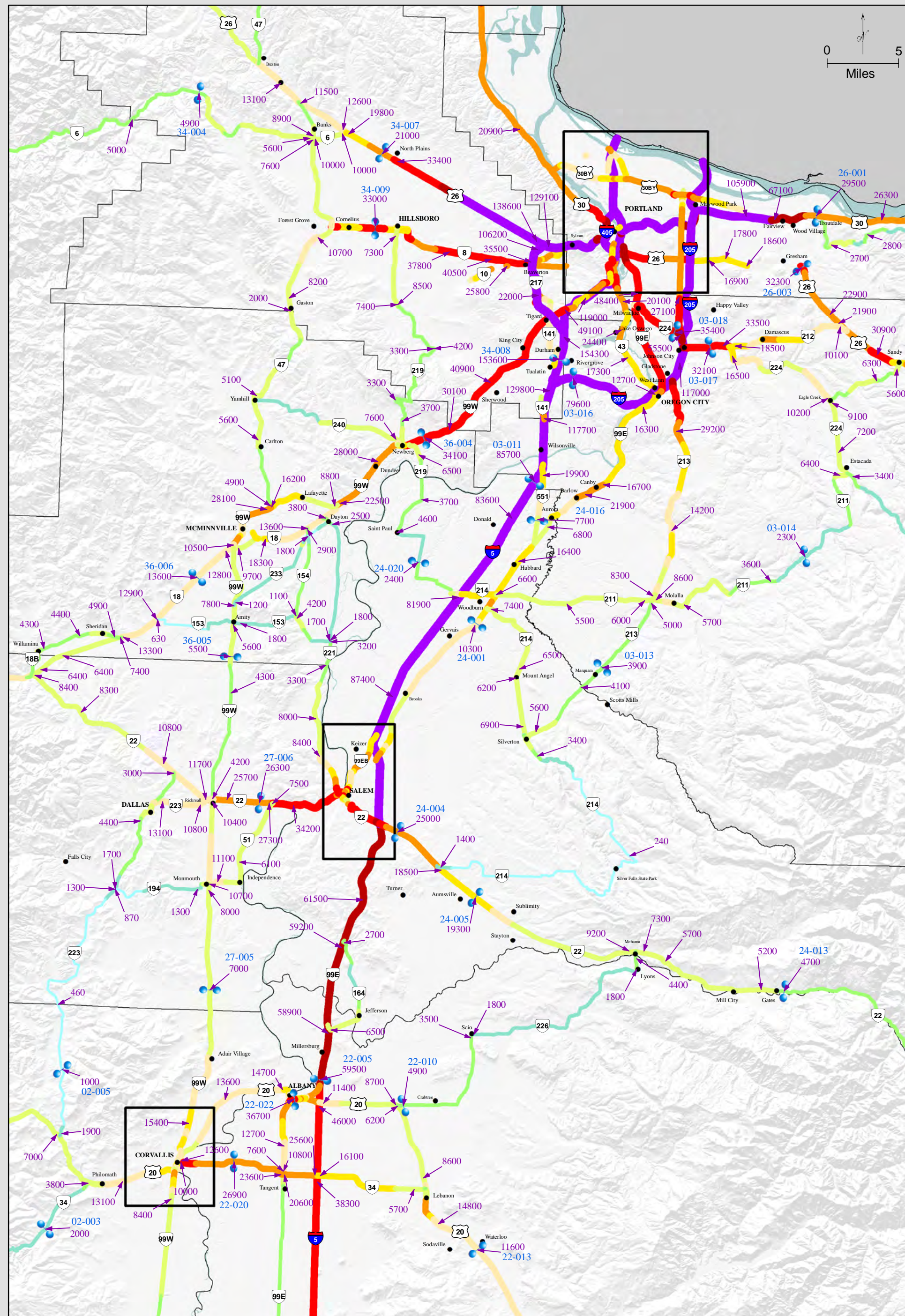
CORVALLIS



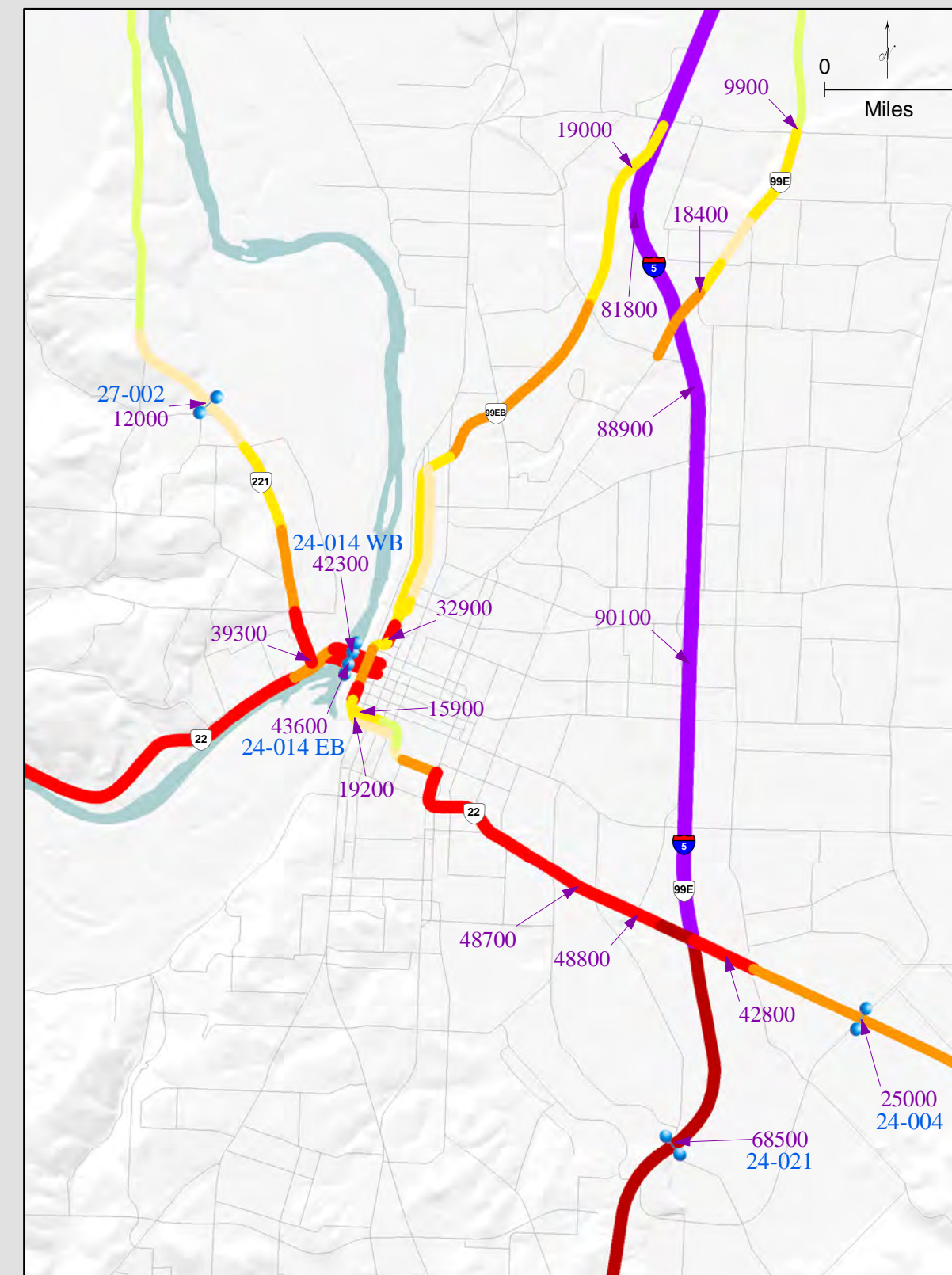
PENDLETON



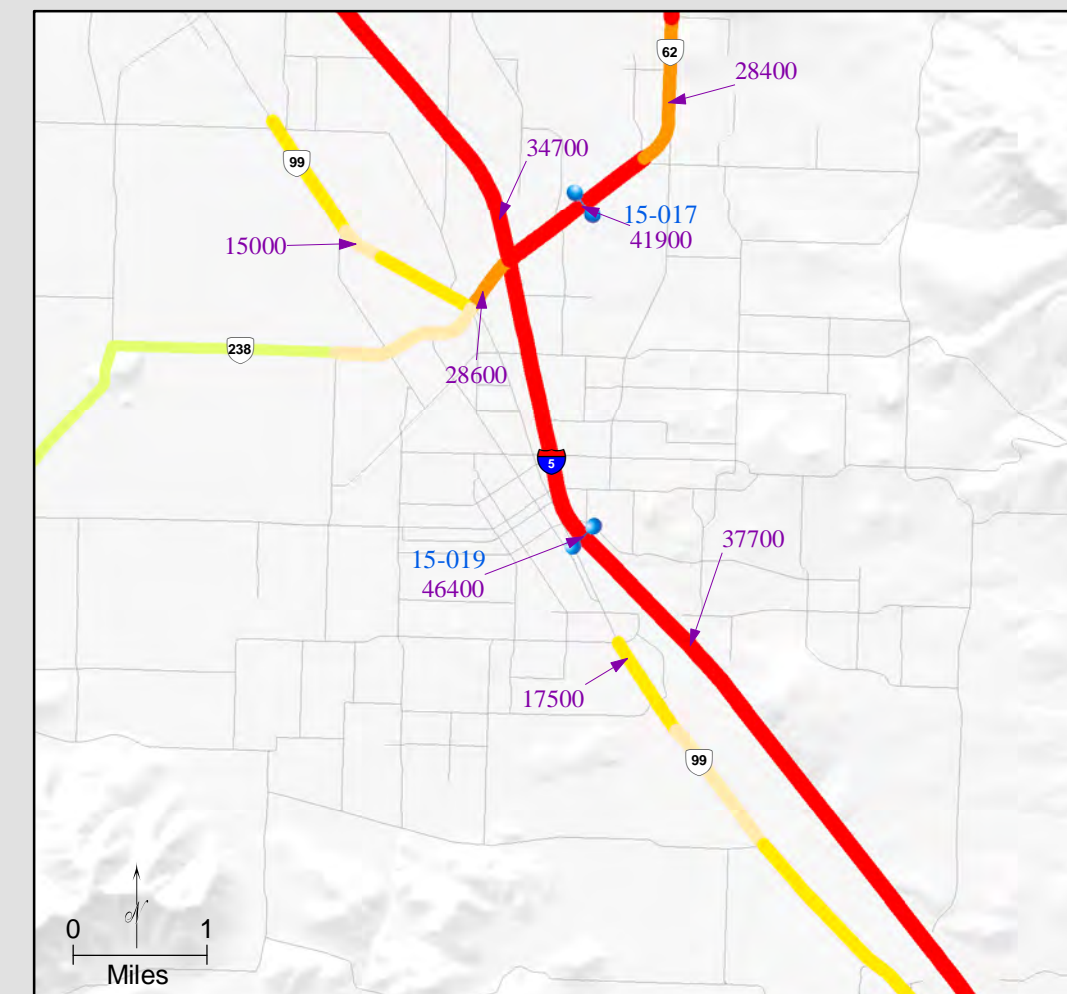
WILLAMETTE VALLEY



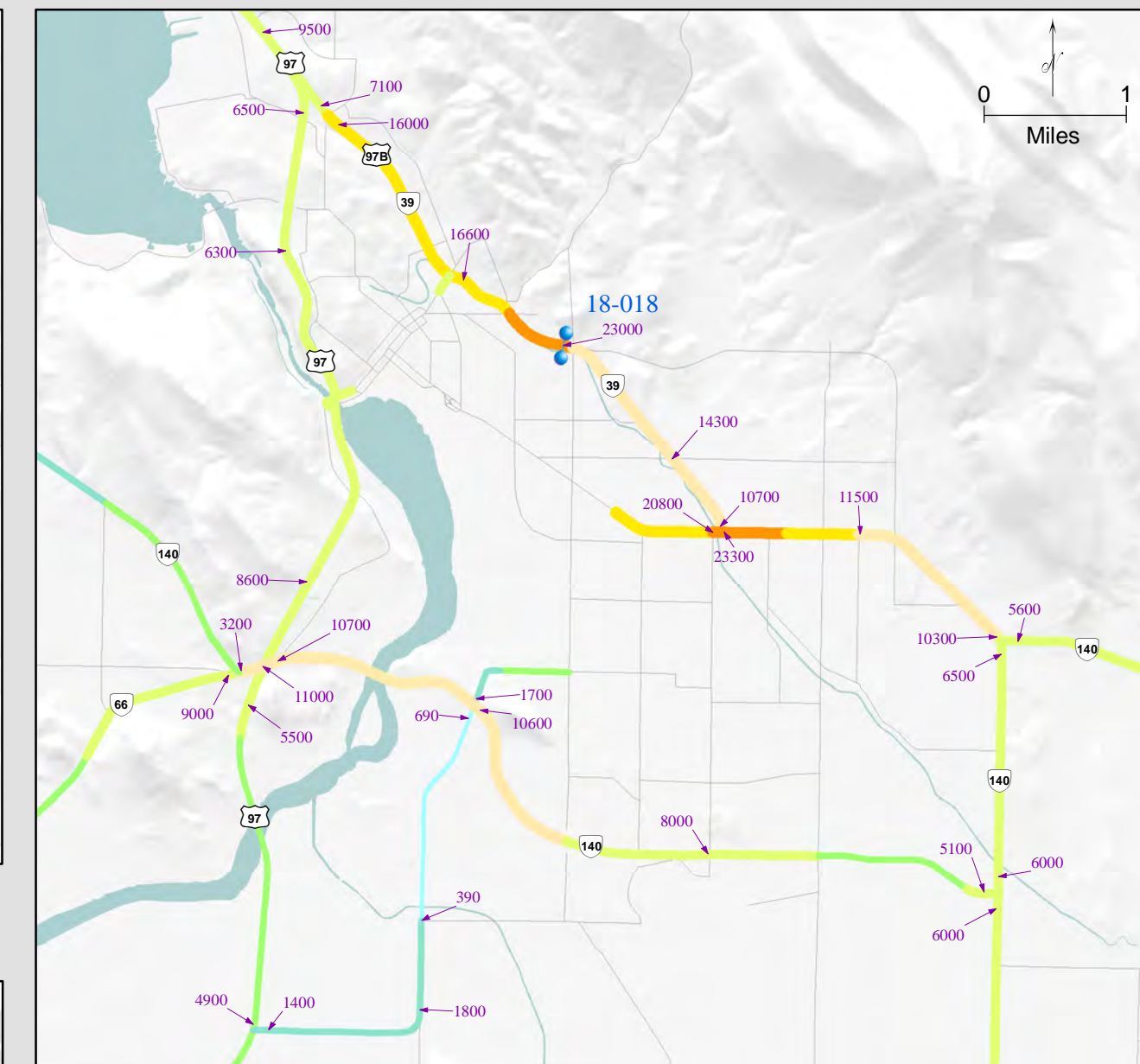
SALEM



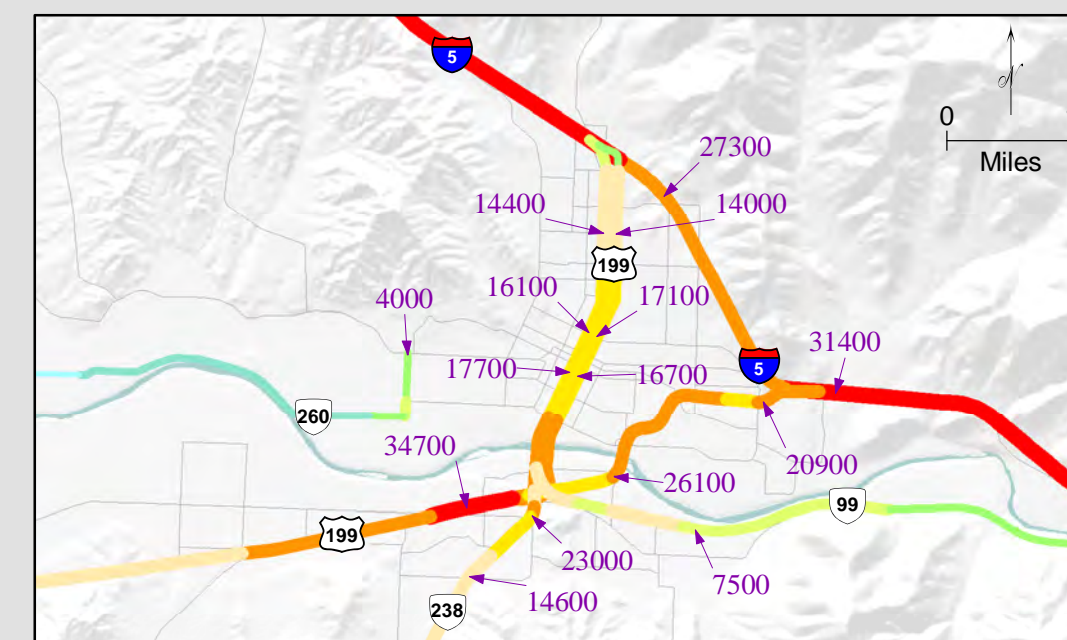
MEDFORD



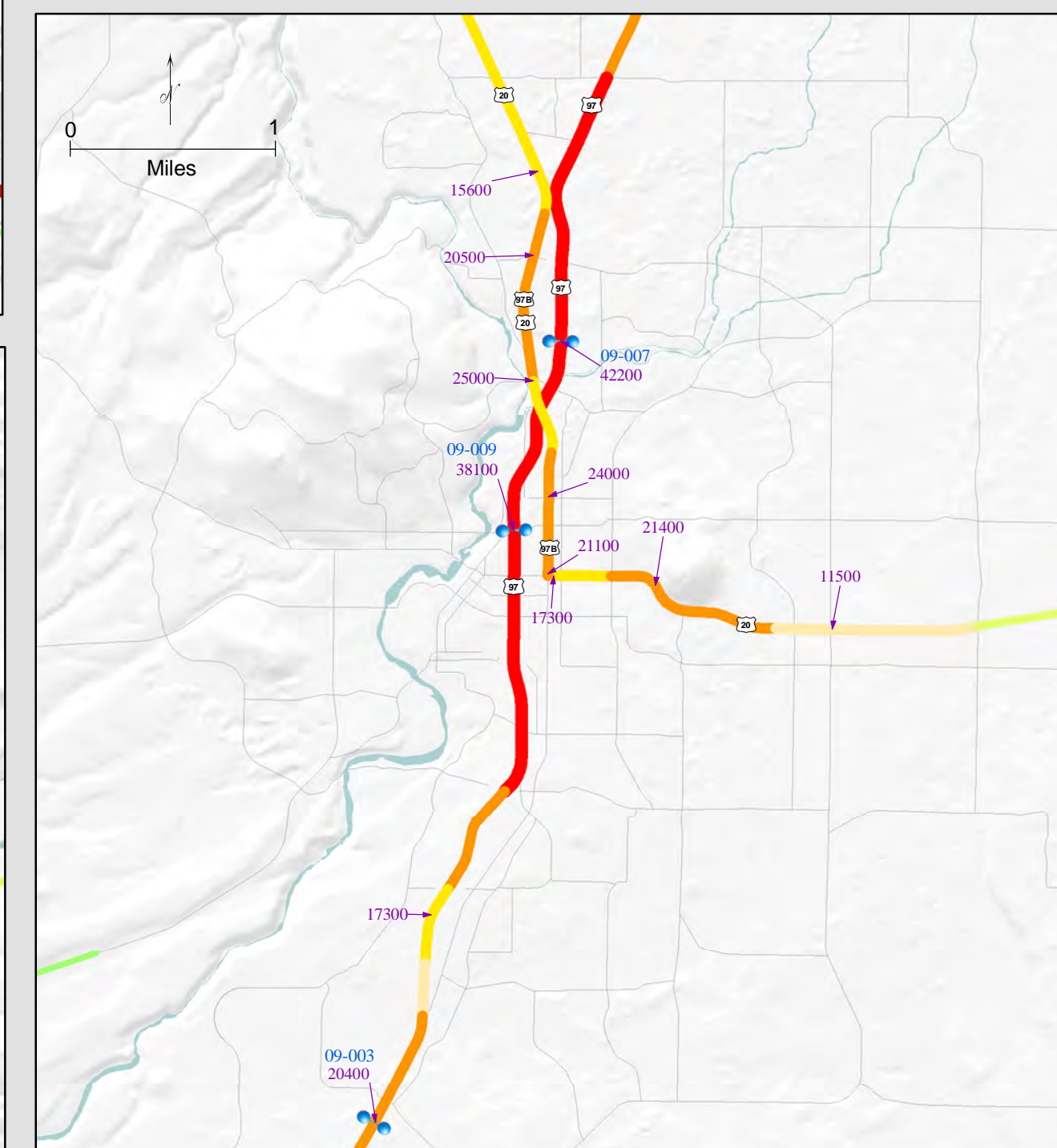
KLAMATH FALLS



GRANTS PASS



BEND



EUGENE

