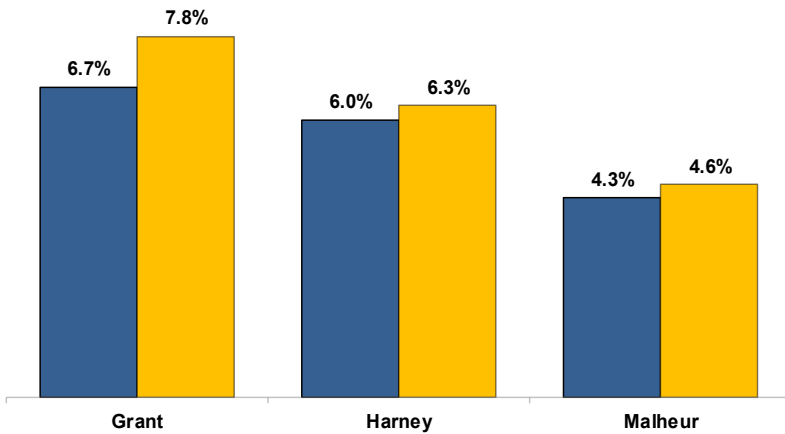


Unemployment Rates (Seasonally Adjusted)

■ May 2018 ■ May 2019



Unemployment Rate News

Malheur County's seasonally adjusted unemployment rate for May 2019 was 4.6 percent while Harney County came in at 6.3 percent and Grant County at 7.8 percent. All three were above Oregon's statewide rate of 4.2 percent and the national rate of 3.6 percent.

All three counties had higher seasonally adjusted unemployment rates in May 2019 than the previous May.

Since comparable statistics began in 1990, the only lower May rates for Malheur County were in 2018, 2017, and 1990. Harney County had lower May rates in 2018 and 2017. Grant County had lower May rates in 2018, 2017, and 2007.

Malheur County's rate ranked in a tie for 16th lowest among Oregon's 36 counties while Harney County's ranked in a three-way tie for 32nd and Grant County's was last at 36th.

Nonfarm Employment Change

May 2018 to May 2019

Grant County gained an estimated 50 jobs over the year. The private sector added 60 jobs with small gains across several industries. The only private industry to lose jobs was manufacturing. The public sector dropped 10 jobs with a loss in state government overcoming a gain in federal government.

Harney County employment increased by an estimated 40 jobs over the year. The private sector added 40 jobs with a gain in leisure and hospitality overcoming a loss in professional and business services. The public sector saw a net change of zero jobs with a loss in local government offsetting a gain in federal government.

Malheur County added an estimated 240 jobs over the year. The private sector increased by 120 jobs with gains led by professional and business services and retail trade. The only private industry to lose jobs was manufacturing. The public sector added 120 jobs led by a gain in local government.

Notable Industry Gains and Losses

Over-the-Year Employment Change from May 2018



Grant

- Mining/Logging (+20)
- Wholesale Trade (+10)
- Transportation/Warehousing/Utilities (+10)
- Construction (+10)

Harney

- Leisure/Hospitality (+50)
- Federal Government (+20)

Malheur

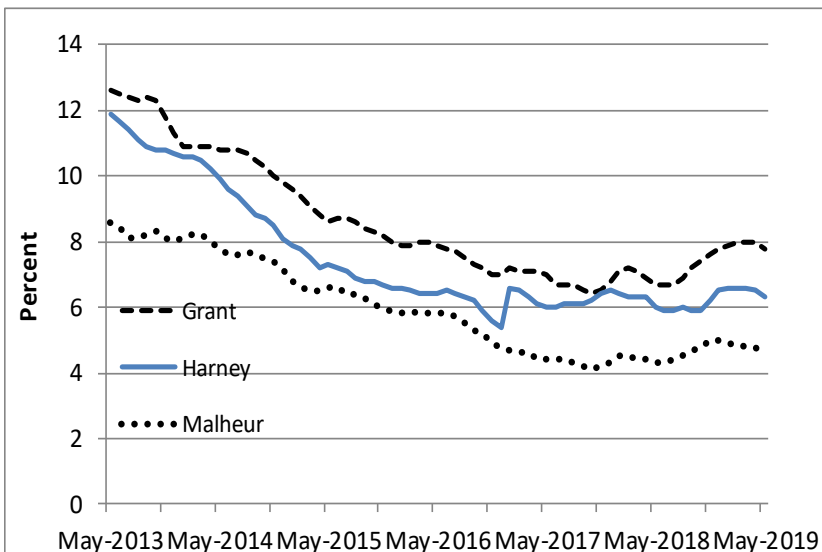
- Local Government (+130)
- Professional/Business Services (+80)
- Retail Trade (+50)

- State Government (-20)
- Manufacturing (-10)

- Local Government (-20)
- Professional/Business Services (-10)

- Manufacturing (-40)
- State Government (-10)

Unemployment rate leveling



Want to learn more about the Oregon economy?

Read our blog at: oregonemployment.blogspot.com/

Follow us on Twitter at: [Twitter.com/OED_Research](https://twitter.com/OED_Research)

Visit our web site at: QualityInfo.org

Visit our subscription service at: qualityinfo.org/p-sofrm

For more economic or labor market data about Grant, Harney or Malheur counties, contact:

Tony Wendel, Workforce Analyst

Desk: 541-276-9050 ext. 232 Cell: 541-667-7027

E-mail: Tony.A.Wendel@oregon.gov

Chris Rich, Regional Economist

Desk: 541-963-7111 ext. 226 Cell: 541-519-0315

E-mail: Christopher.M.Rich@oregon.gov

Want to be added to the monthly distribution list?

E-mail me at: Tony.A.Wendel@oregon.gov