

Data at a Glance October 27—November 2, 2019 (Week 44)

	Current Week (44)	Previous Week (43)
Percentage of emergency department visits for ILI¹	1.1%	1.1%
Percentage positive influenza tests²	2.4%	1.0%
Influenza-associated hospitalizations³	4	0
Reported influenza outbreaks	0	0
Influenza-associated pediatric mortality	0	0
Respiratory Syncytial Virus (RSV) activity⁴	1.4%	1.1%

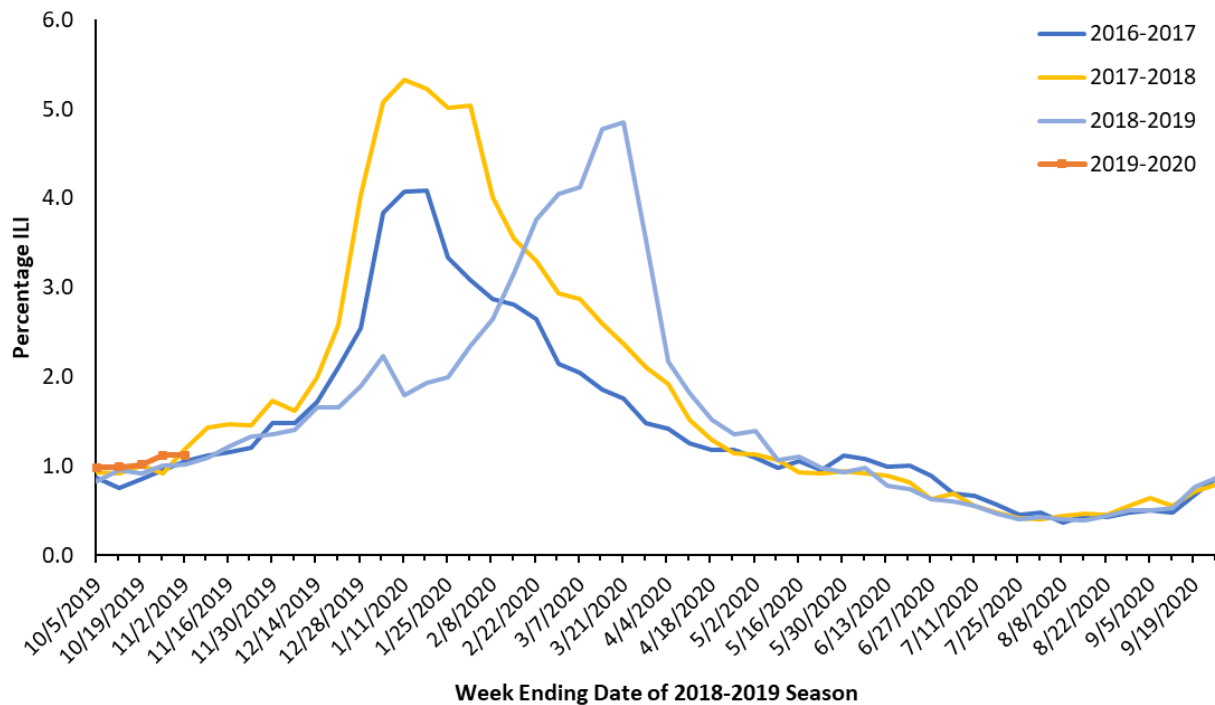
¹Based on Oregon ESSENCE Syndromic Surveillance. Data represent statewide aggregate percent.

²Percent positivity based on data from Oregon reporters to the National Respiratory and Enteric Virus Surveillance System (NREVSS)

³Based on hospitalization surveillance in Clackamas, Multnomah, and Washington counties only.

⁴Percent positivity based on data from Oregon's RSV Laboratory Surveillance System.

Figure 1. Percentage of ED Visits for ILI, Oregon ESSENCE Syndromic Surveillance, 2016–2017, 2017–2018, 2018–2019, 2019–2020



Oregon ESSENCE Syndromic Surveillance: Oregon Public Health tracks hospital emergency department (ED) visits throughout the state using the Oregon ESSENCE syndromic surveillance system. ESSENCE categorizes chief complaints into syndrome categories, which include ILI. Figure 1, above, displays percentages for all of Oregon during this flu season compared with the previous three flu seasons. The percent of ED visits for ILI in all of Oregon was 1.1% during week 44, 2019.

Laboratory Surveillance: The National Respiratory and Enteric Virus Surveillance System (NREVSS) is a laboratory-based system that monitors influenza and other respiratory viruses circulating the United States. More information is at CDC's [website](#).

Table 1 shows the tests conducted and results by region for the current week for influenza in specimens tested at the Oregon laboratories reporting to NREVSS. Figure 2 shows that 2.4% of specimens tested at Oregon labs were positive for influenza during week 44, and the bar chart displays the number of influenza-positive tests by flu type and percent positivity.

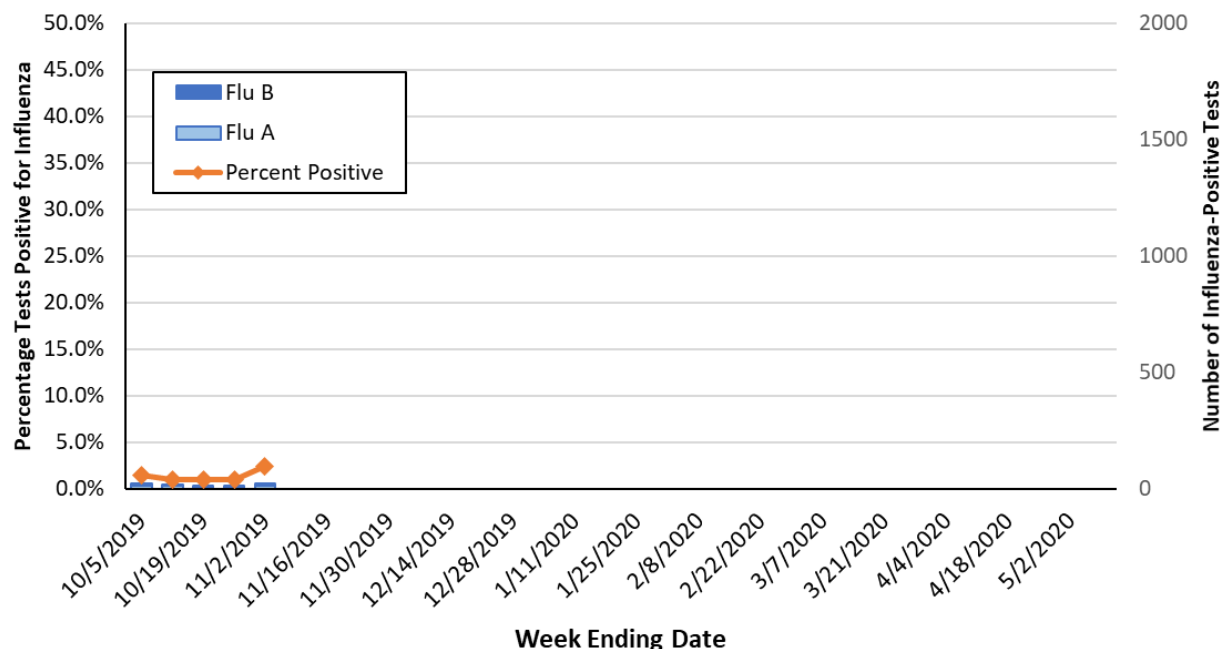
Participation by laboratories is voluntary. Current labs participating in NREVSS in Oregon include:

Legacy Emanuel Hospital and Health Center (Portland, OR), Oregon Health & Science University (Portland, OR), Providence Health (Oregon), Kaiser Permanente (Oregon), Veteran's Administration Hospital (Portland, OR), Bay Area Hospital (Coos Bay, OR), Curry Health Network (Brookings, OR), Mercy Medical Center (Roseburg, OR), Sky Lakes Medical Center (Klamath Falls, OR), Lake Health District, (Lakeview, OR), Rogue Valley Medical Center (SW Oregon), Good Shepherd Medical Center (Hermiston, OR), Mid-Columbia Medical Center (The Dalles, OR), Central Oregon Pediatric Associates (Central Oregon), Harney District Hospital (Burns, OR), St. Charles (Bend, OR), Columbia Memorial Hospital (Astoria, OR), Salem Hospital (Salem, OR), Willamette Valley Medical Center (McMinnville, OR).

Table 1. Influenza Test Results in Oregon by Region, NREVSS, Current Week, 2019–2020 Season

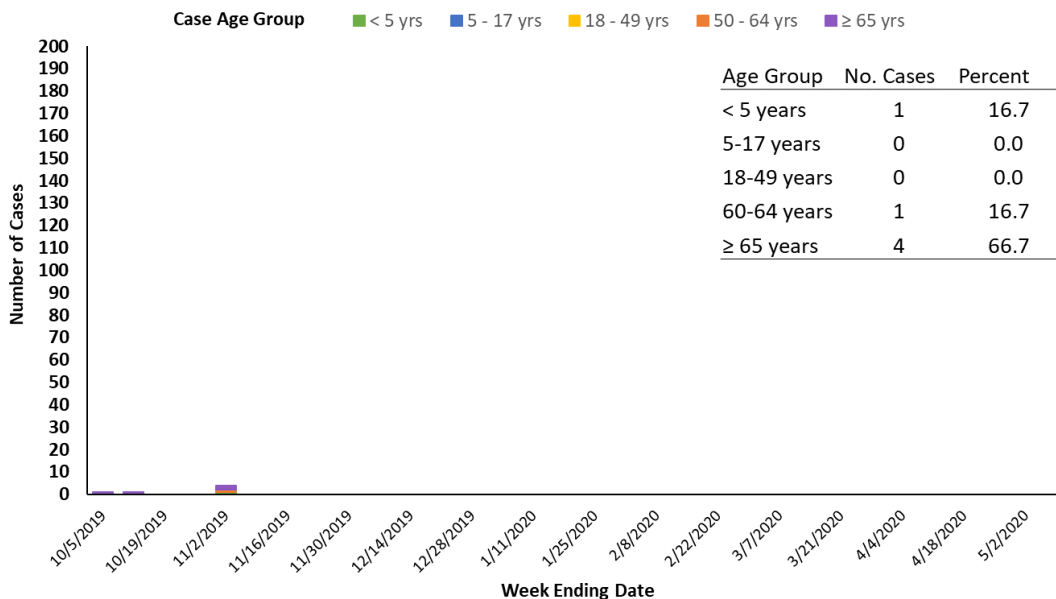
Region	Total Tests	Positive		Flu A		Flu B	
		No.	(%)	No.	(%)	No.	(%)
Portland Metro	344	12	3.5%	6	50.0%	6	50.0%
Southern Oregon	242	3	1.2%	2	66.7%	1	33.3%
Columbia Gorge	17	0	0.0%	0	0.0%	0	0.0%
Central Oregon	121	2	1.7%	2	100.0%	0	0.0%
Willamette Valley	184	5	2.7%	1	20.0%	4	80.0%
State Total	908	22	2.4%	11	50.0%	11	50.0%

**Figure 2. Oregon Influenza Laboratory Surveillance
Percent Positive Influenza Tests by Week, NREVSS, 2019-2020 Season**



Hospitalizations: In Clackamas, Multnomah, and Washington counties 4 influenza-associated hospitalizations were reported during week 44 of 2019. In total, there have been 6 hospitalizations; 4 were subtyped as flu A and two as flu B.

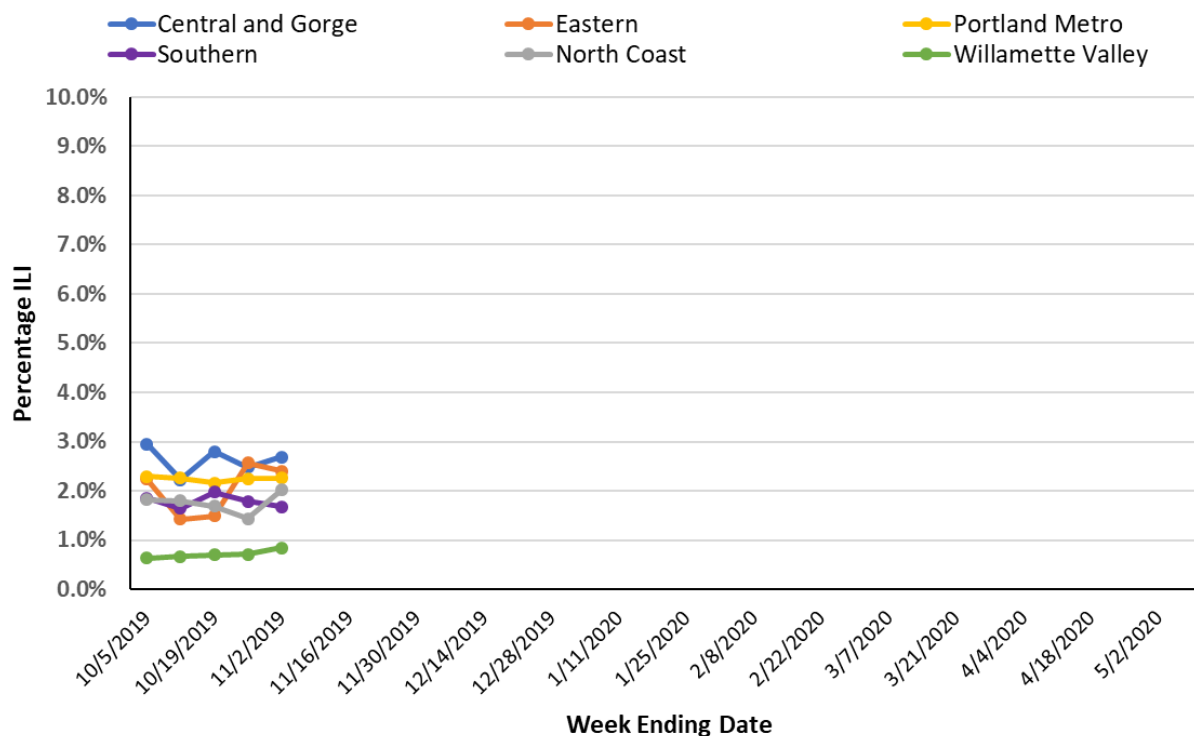
Figure 3. Portland Metro Area Influenza-Associated Hospitalizations by Week and Age Group, 2019-2020 Season



Influenza Outbreaks: There were 0 influenza outbreaks reported to the Oregon Health Authority during Week 44, 2019.

Outpatient Influenza-like Illness Surveillance: Oregon’s outpatient influenza-like illness (ILI) surveillance comprises 17 voluntary reporting outpatient providers, 64 emergency departments and urgent care clinics reporting to ESSENCE, and 180 OCHIN clinics from across Oregon. The percent of outpatients seen with ILI across the state during week 44 of 2019 was 1.9%. Regionally, the percent was highest in the Central and Gorge region (2.7%) and lowest in the Willamette Valley (0.8%).

Figure 4. Percentage of Visits for ILI at Outpatient Clinics & Emergency Departments, by Oregon Region, 2019-2020



Vaccination Information: Weekly influenza immunization reporting is based on ALERT Immunization Information System (ALERT IIS) data through Epiweek 44 of 2019 (November 2nd). To date, over a million influenza immunizations have been reported to ALERT IIS. As we move into November, the weekly total of new influenza immunizations is declining, and is a close match to the pattern of previous seasons. As a caveat, while most immunizations are reported quickly and electronically to ALERT IIS, some reporting is delayed – current weekly totals will be adjusted upward later.

Figure 5. 2019/2020 Oregon Flu Vaccine Doses in ALERT IIS by Epiweek

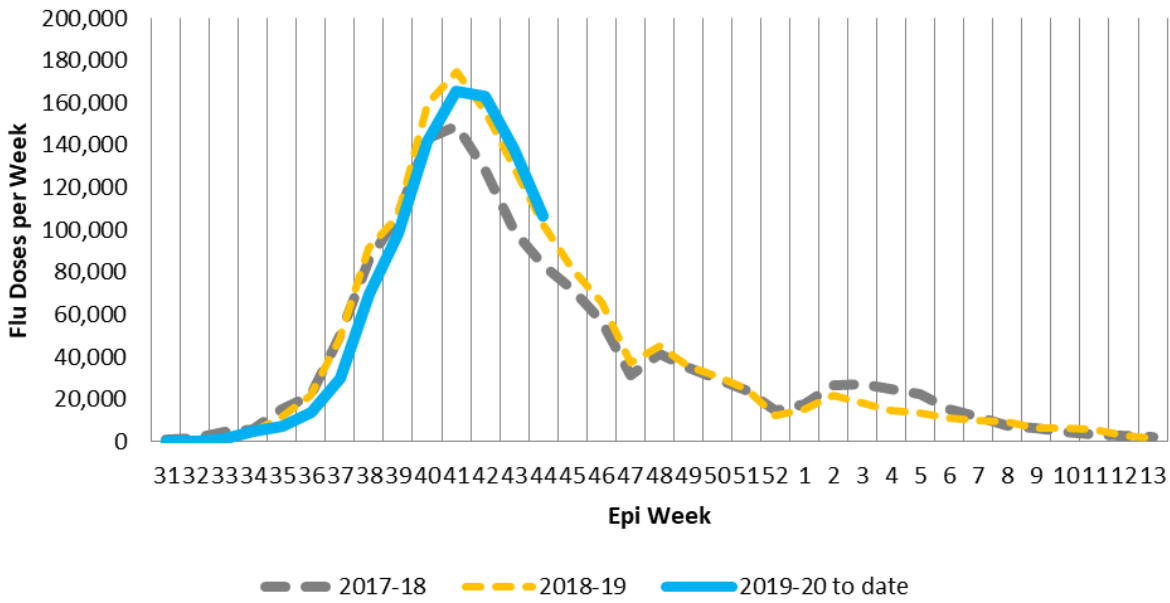
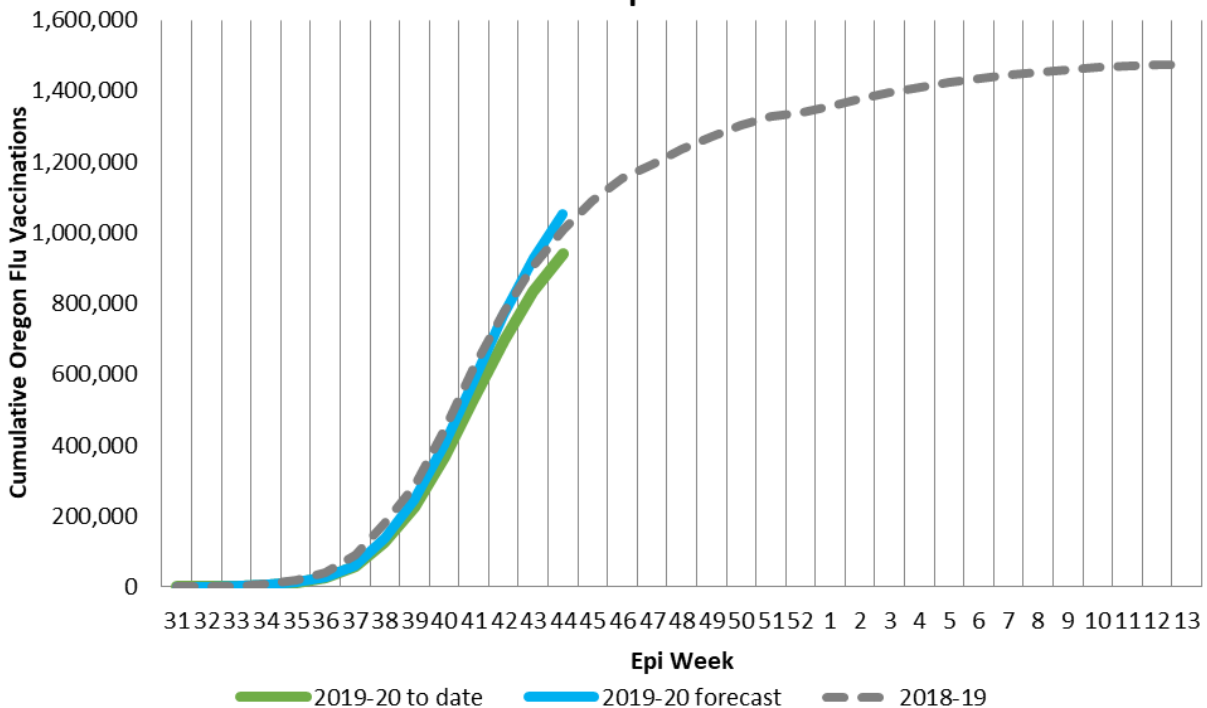


Figure 6. 2018/2019 Flu Vaccination in ALERT IIS by Epiweek, Cumulative Doses Compared to Last Season



US Data (from CDC FluView): According to this week's FluView report, seasonal influenza activity in the United States remains low but is increasing.

Viruses

- **Clinical Lab:** 3.2% of respiratory specimens tested in clinical laboratories were positive for influenza viruses. This is higher than the previous week.
- **Public Health Lab:** Nationally, influenza A(H3N2) and influenza B/Victoria viruses have been most common; however, A(H1N1) pdm09 viruses also circulated. The predominant virus varies by region.
- **Virus Characterization:** Data for this season will be reported when a sufficient number of viruses have been characterized. Virus characterization data through September 28 is available.

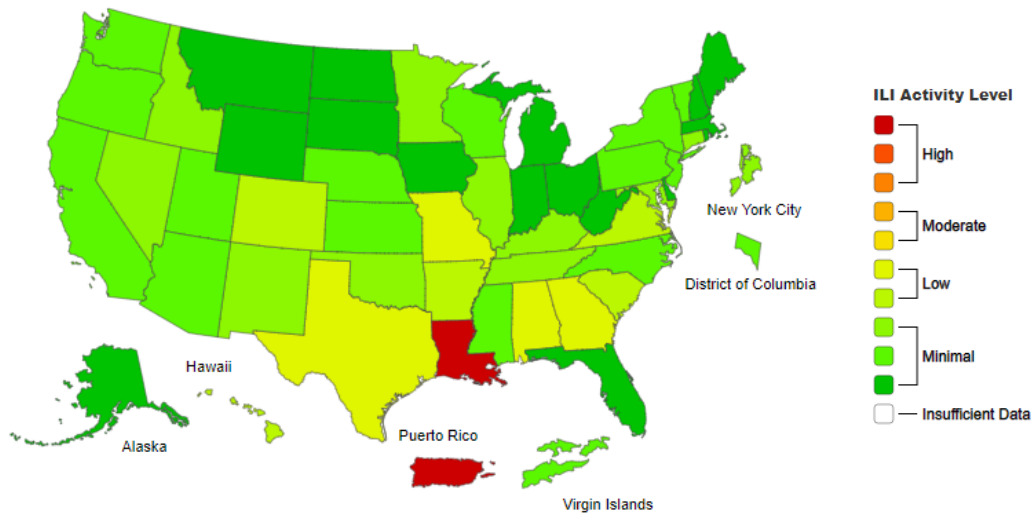
Illness

- **ILINet Outpatient Illness:** 2.1% of visits to a health care provider were for influenza-like illness (ILI). ILI activity is higher than the previous week but remains below the national baseline of 2.4%.
- **ILINet Activity Map:** The majority of jurisdictions experienced minimal ILI activity; however, Louisiana and Puerto Rico experienced high ILI activity and 9 states experienced low ILI activity.
- **Geographic Spread:** The majority of jurisdictions reported sporadic or local activity. Three states reported regional or widespread activity, and one state reported no activity.

Severe Disease

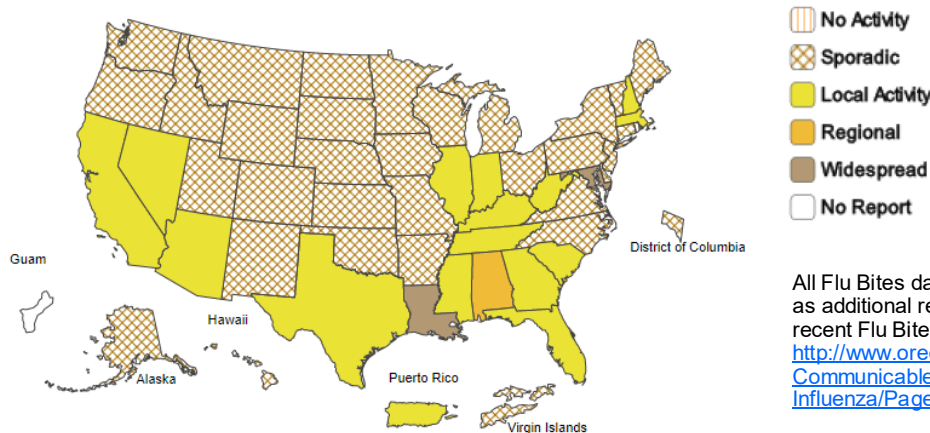
- **Hospitalizations:** Data for this season will be provided when a sufficient number of hospitalizations have been reported.
- **P&I Mortality:** Due to technical issues, data from the NCHS mortality surveillance system are not available this week.
- **Pediatric Deaths:** No new influenza-associated pediatric deaths occurring during the 2019-2020 season were reported to CDC this week. The total for the season is 2.

**Influenza-Like Illness (ILI) Activity Level Indicator Determined by Data Reported to ILINet
2019-20 Infection Season Week 44 ending Nov 02, 2019**



Map above: This map uses the proportion of outpatient visits to ILINet sentinel providers for influenza-like illness to measure the ILI activity level within a state. It does not, however, measure the extent of geographic spread of flu within a state. Therefore, outbreaks occurring in a single city could cause the state to display high activity levels.

**Weekly Influenza Activity Estimates Reported by State and Territorial Epidemiologists*
Week Ending Nov 02, 2019 - Week 44**



Map left: The map left measures the geographic spread of influenza viruses, but does not measure the intensity of influenza activity.

All Flu Bites data are preliminary and may change as additional reports are received. Find the most recent Flu Bites report online at:
<http://www.oregon.gov/oha/ph/DiseasesConditions/CommunicableDiseaseSurveillanceData/Influenza/Pages/surveil.aspx>