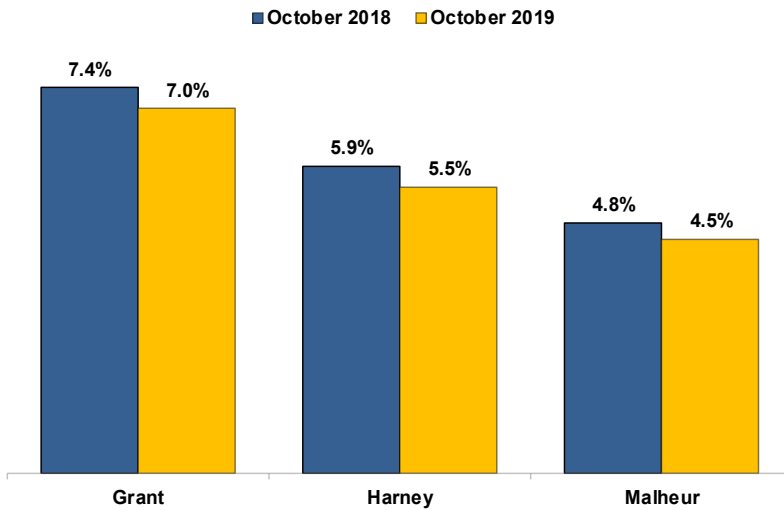


Unemployment Rates (Seasonally Adjusted)



Unemployment Rate News

Malheur County's seasonally adjusted unemployment rate for October 2019 was 4.5 percent, while Harney County came in at 5.5 percent and Grant County at 7.0 percent. All three were above Oregon's statewide rate of 4.1 percent and the national rate of 3.6 percent.

All three counties had lower seasonally adjusted unemployment rates in October 2019 than the previous October.

Harney County's October 2019 rate is its lowest October rate since comparable statistics began in 1990. Malheur and Grant counties had a lower October rate only in 2017.

Malheur County's rate ranked in a four-way tie for 14th lowest among Oregon's 36 counties while Harney County's ranked in a tie for 30th and Grant County's was last at 36th.

Nonfarm Employment Change

October 2018 to October 2019

Grant County gained an estimated 50 jobs over the year. The private sector added 10 jobs with small gains overcoming small losses across industries. The public sector added 40 jobs with gains in local government and federal government outpacing a loss in state government.

Harney County added an estimated 40 jobs over the year. The private sector gained 60 jobs led by gains in professional and business services and leisure and hospitality. Losses were confined to goods-producing. The public sector dropped 20 jobs with losses in local government and federal government.

Malheur County employment increased by an estimated 40 jobs over the year. The private sector added 10 jobs led by gains in manufacturing. Losses were led by transportation, warehousing, and utilities and wholesale trade. The public sector added 30 jobs with gains in federal government, state government, and local government.

Notable Industry Gains and Losses

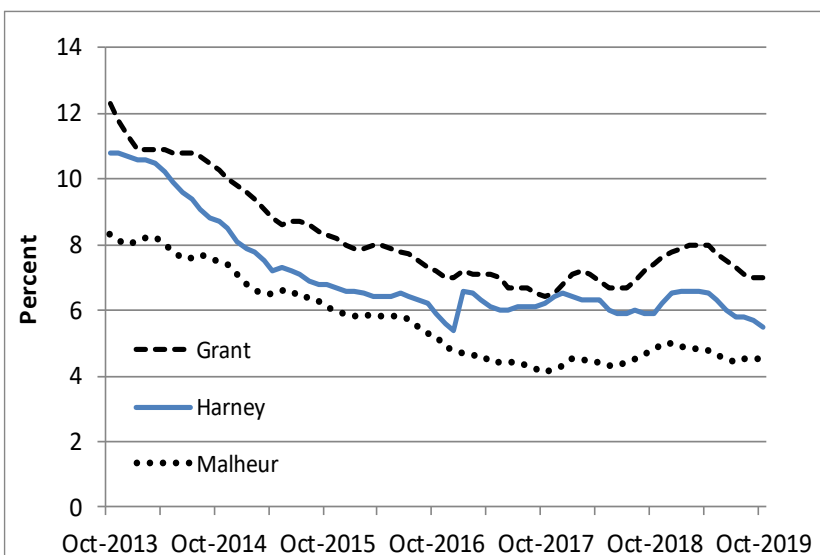
Over-the-Year Employment Change from October 2018



<u>Grant</u>	<u>Harney</u>	<u>Malheur</u>
Local Government (+40)	Professional/Business Services (+20)	Manufacturing (+100)
Wholesale Trade (+10)	Leisure/Hospitality (+20)	Other Services (+30)
Financial Activities (+10)	Wholesale Trade (+10)	Professional/Business Services (+20)
Professional/Business Services (+10)	Retail Trade (+10)	Leisure/Hospitality (+20)

Manufacturing (-10)	Goods-producing (-20)	Transportation/Warehousing/Utilities (-80)
Retail Trade (-10)	Federal Government (-10)	Wholesale Trade (-50)
Information (-10)	Local Government (-10)	Mining/Logging/Construction (-30)

Unemployment rate remains fairly level



Want to learn more about the Oregon economy?

Read our blog at: oregonemployment.blogspot.com/

Follow us on Twitter at: [Twitter.com/OED_Research](https://twitter.com/OED_Research)

Visit our web site at: QualityInfo.org

Visit our subscription service at: qualityinfo.org/p-sofrm

For more economic or labor market data about Grant, Harney or Malheur counties, contact:

Tony Wendel, Workforce Analyst

Desk: 541-276-9050 ext. 232 Cell: 541-667-7027

E-mail: Tony.A.Wendel@oregon.gov

Chris Rich, Regional Economist

Desk: 541-963-7111 ext. 226 Cell: 541-519-0315

E-mail: Christopher.M.Rich@oregon.gov

Want to be added to the monthly distribution list?

E-mail me at: Tony.A.Wendel@oregon.gov