

## Data at a Glance November 24—November 30, 2019 (Week 48)

	Current Week (48)	Previous Week (47)
<b>Percentage of emergency department visits for ILI<sup>1</sup></b>	<b>2.1%</b>	<b>1.7%</b>
<b>Percentage positive influenza tests<sup>2</sup></b>	<b>14.0%</b>	<b>10.0%</b>
<b>Influenza-associated hospitalizations<sup>3</sup></b>	<b>16</b>	<b>15</b>
<b>Reported influenza outbreaks</b>	<b>4</b>	<b>0</b>
<b>Influenza-associated pediatric mortality</b>	<b>0</b>	<b>0</b>
<b>Respiratory Syncytial Virus (RSV) activity<sup>4</sup></b>	<b>5.8%</b>	<b>3.7%</b>

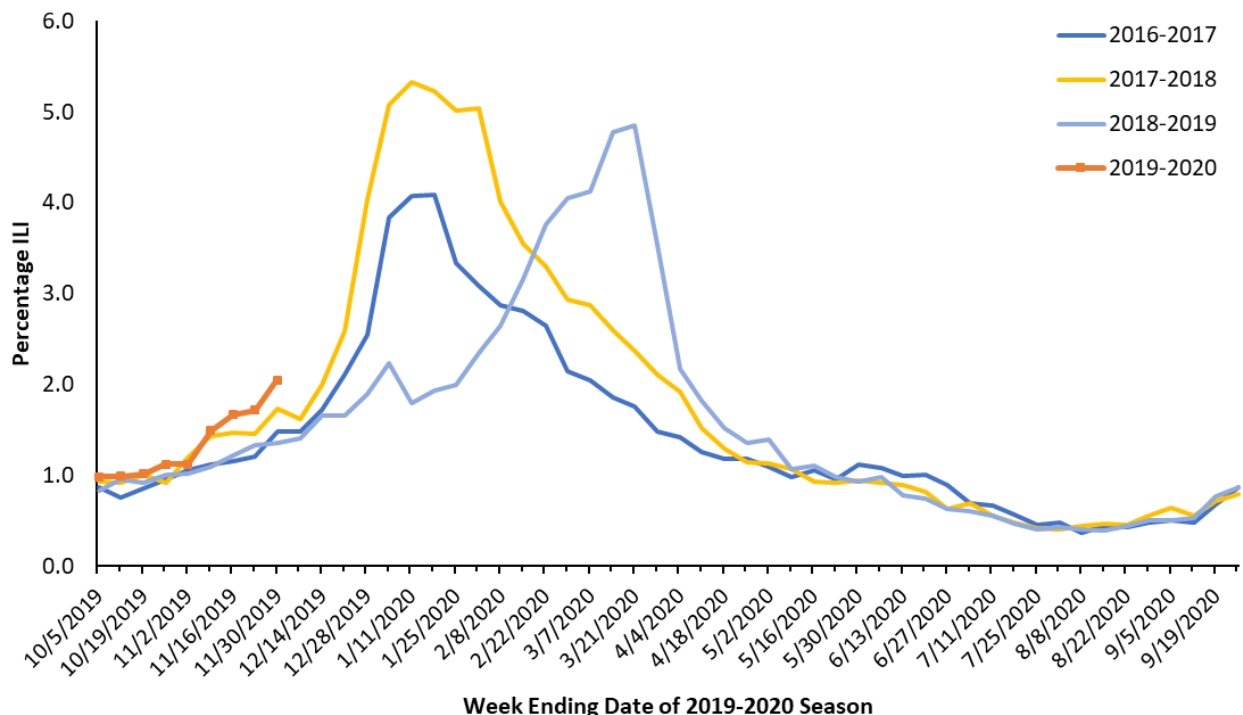
<sup>1</sup>Based on Oregon ESSENCE Syndromic Surveillance. Data represent statewide aggregate percent.

<sup>2</sup>Percent positivity based on data from Oregon reporters to the National Respiratory and Enteric Virus Surveillance System (NREVSS)

<sup>3</sup>Based on hospitalization surveillance in Clackamas, Multnomah, and Washington counties only.

<sup>4</sup>Percent positivity based on data from Oregon's RSV Laboratory Surveillance System.

**Figure 1. Percentage of ED Visits for ILI, Oregon ESSENCE Syndromic Surveillance, 2016–2017, 2017–2018, 2018–2019, 2019–2020**



**Oregon ESSENCE Syndromic Surveillance:** Oregon Public Health tracks hospital emergency department (ED) visits throughout the state using the Oregon ESSENCE syndromic surveillance system. ESSENCE categorizes chief complaints into syndrome categories, which include ILI. Figure 1, above, displays percentages for all of Oregon during this flu season compared with the previous three flu seasons. The percent of ED visits for ILI in all of Oregon was 2.1% during week 48, 2019.

**Laboratory Surveillance:** The National Respiratory and Enteric Virus Surveillance System (NREVSS) is a laboratory-based system that monitors influenza and other respiratory viruses circulating the United States. More information is at CDC's [website](#).

Table 1 shows the tests conducted and results by region for the current week for influenza in specimens tested at the Oregon laboratories reporting to NREVSS. Figure 2 shows that 14.0% of specimens tested at Oregon labs were positive for influenza during week 48, and the bar chart displays the number of influenza-positive tests by flu type and percent positivity.

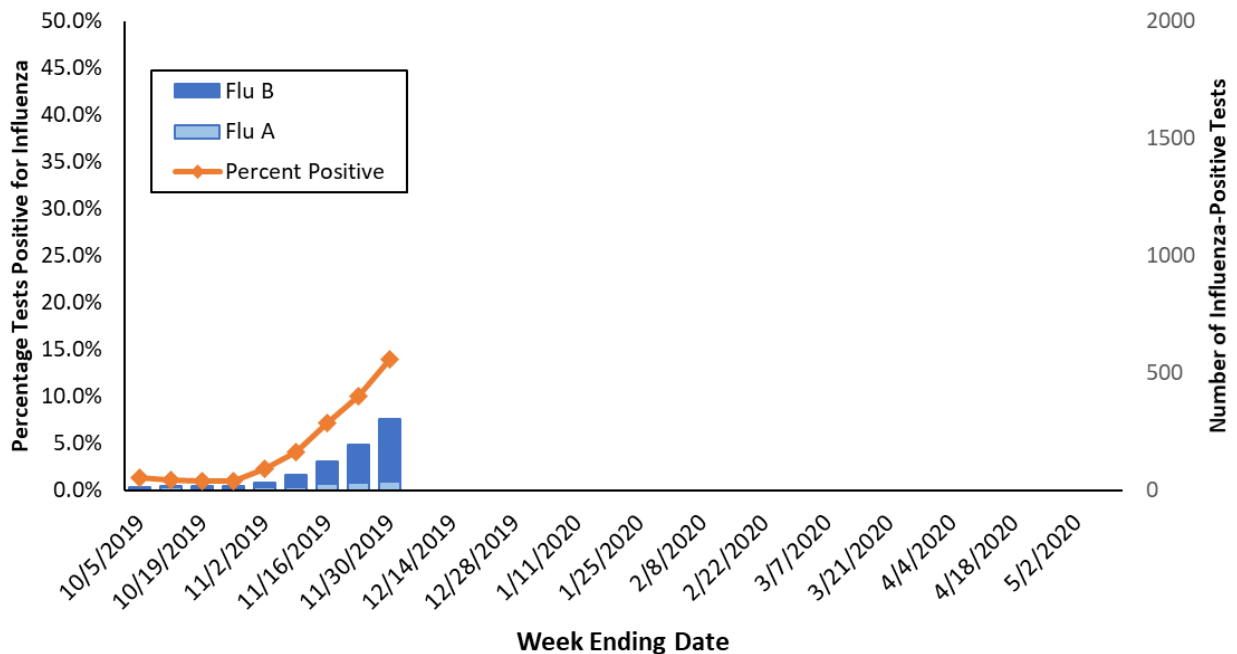
Participation by laboratories is voluntary. Current labs participating in NREVSS in Oregon include:

Legacy Emanuel Hospital and Health Center (Portland, OR), Oregon Health & Science University (Portland, OR), Providence Health (Oregon), Kaiser Permanente (Oregon), Veteran's Administration Hospital (Portland, OR), Bay Area Hospital (Coos Bay, OR), Curry Health Network (Brookings, OR), Mercy Medical Center (Roseburg, OR), Sky Lakes Medical Center (Klamath Falls, OR), Lake Health District, (Lakeview, OR), Rogue Valley Medical Center (SW Oregon), Good Shepherd Medical Center (Hermiston, OR), Mid-Columbia Medical Center (The Dalles, OR), Central Oregon Pediatric Associates (Central Oregon), Harney District Hospital (Burns, OR), St. Charles (Bend, OR), Columbia Memorial Hospital (Astoria, OR), Salem Hospital (Salem, OR), Willamette Valley Medical Center (McMinnville, OR).

**Table 1. Influenza Test Results in Oregon by Region, NREVSS, Current Week, 2019–2020 Season**

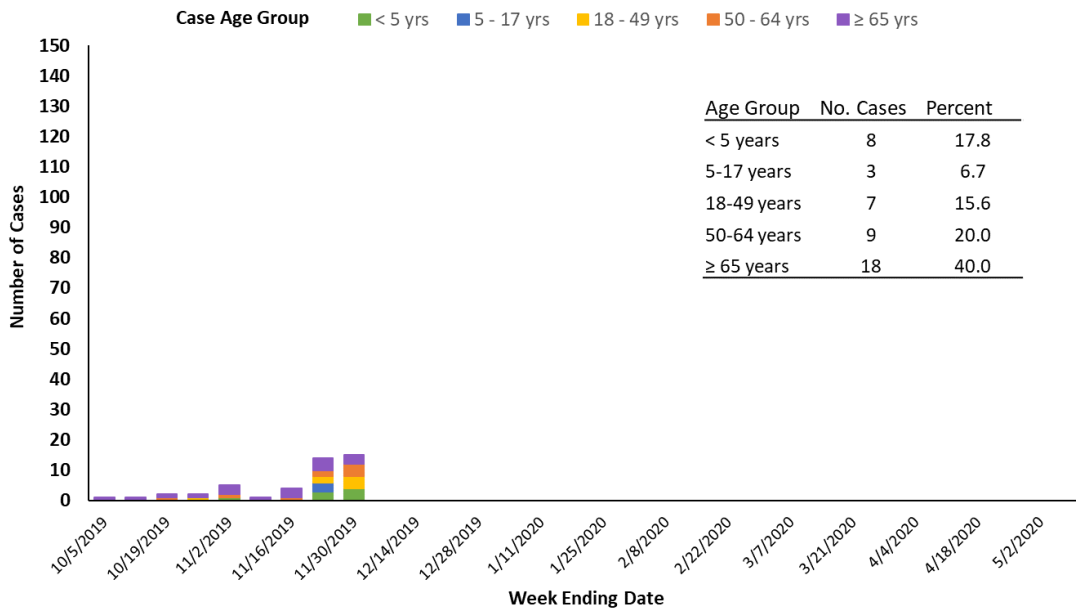
Region	Total Tests	Positive		Flu A		Flu B	
		No.	(%)	No.	(%)	No.	(%)
Portland Metro	1313	220	16.8%	19	8.6%	201	91.4%
Southern Oregon	382	25	6.5%	6	24.0%	19	76.0%
Columbia Gorge	34	6	17.6%	0	0.0%	6	100.0%
Central Oregon	210	35	16.7%	9	25.7%	26	74.3%
Willamette Valley	239	19	7.9%	2	10.5%	17	89.5%
<b>State Total</b>	<b>2178</b>	<b>305</b>	<b>14.0%</b>	<b>36</b>	<b>11.8%</b>	<b>269</b>	<b>88.2%</b>

**Figure 2. Oregon Influenza Laboratory Surveillance  
Percent Positive Influenza Tests by Week, NREVSS, 2019-2020 Season**



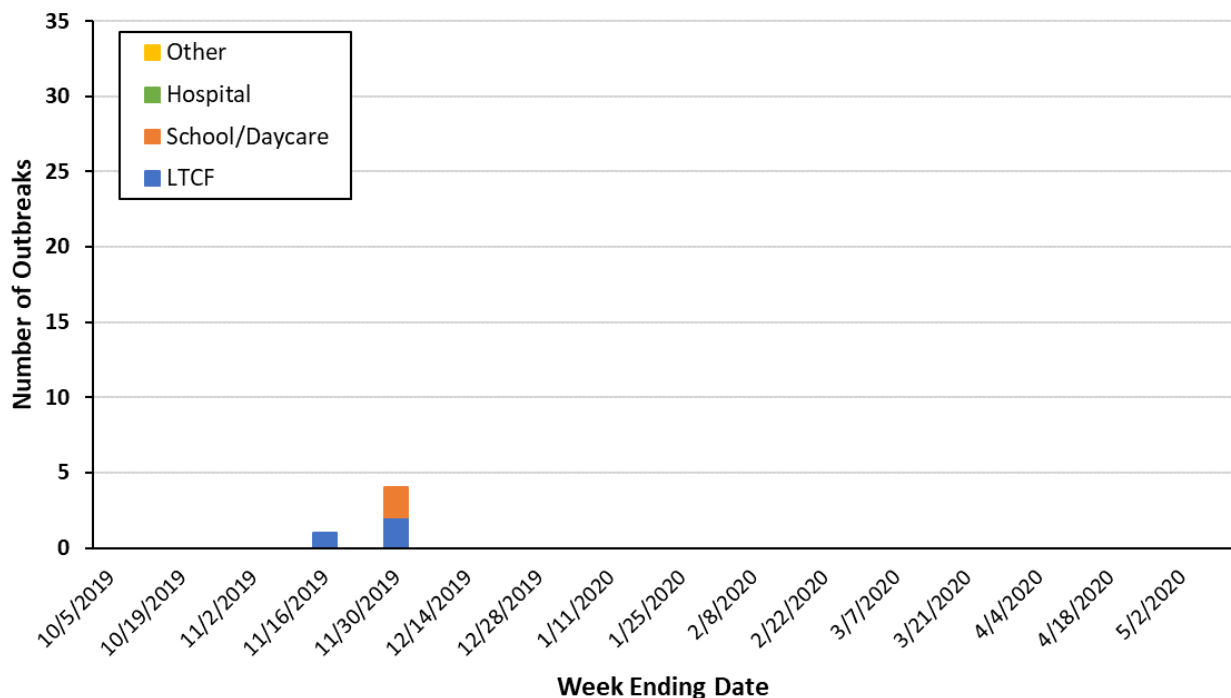
**Hospitalizations:** In Clackamas, Multnomah, and Washington counties 16 influenza-associated hospitalizations were reported during week 48 of 2019. In total, there have been 45 hospitalizations; 14 (31.1%) were positive for flu A and 31 (68.9%) were positive for flu B. One specimen has been subtyped as flu A H1N1.

**Figure 3. Portland Metro Area Influenza-Associated Hospitalizations by Week and Age Group, 2019-2020 Season**



**Influenza Outbreaks:** There were 4 influenza outbreaks reported during Week 48, 2019. There have been a total of 5 influenza outbreaks reported to the Oregon Health Authority in the 2019—2020 flu season, 3 occurred in a long-term care facility, and 2 occurred in a school.

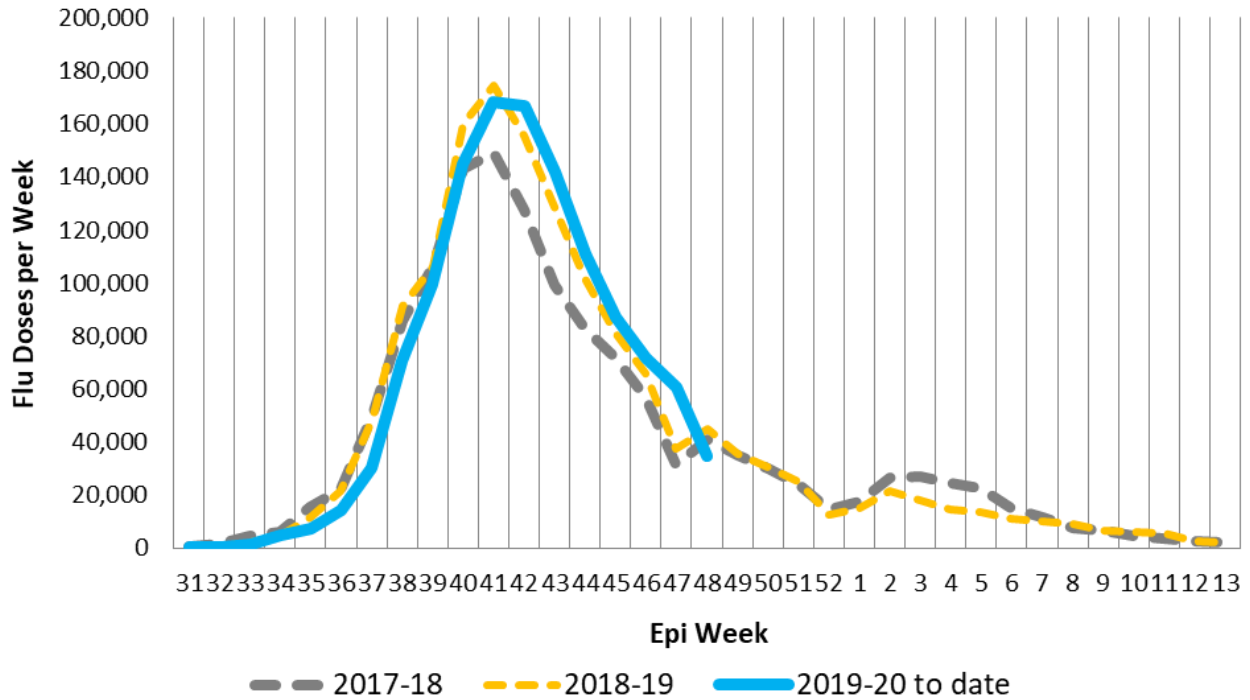
**Figure 4. Number of Influenza Outbreaks in Oregon by Setting, 2019-2020 Season**



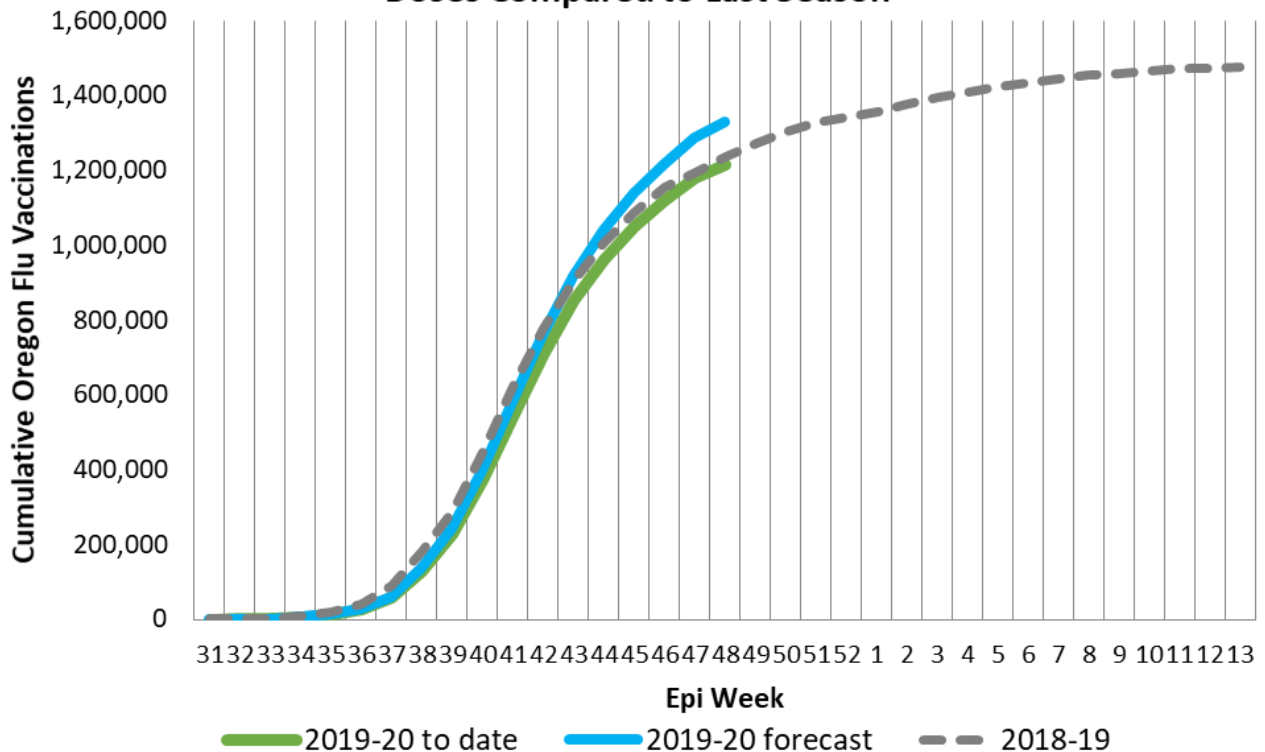


**Vaccination Information:** Weekly influenza immunization reporting is based on ALERT Immunization Information System (ALERT IIS) data through Epiweek 48 of 2019 (November 30th). This week's data shows the expected drop in immunization over the Thanksgiving holiday. Influenza immunization totals continue to run at a comparable level to last season. As a caveat, while most immunizations are reported quickly and electronically to ALERT IIS, some reporting is delayed—current weekly totals will be adjusted upward later.

### 2019-2020 Oregon Flu Vaccine Doses in ALERT IIS by Epiweek



### 2019-2020 Flu Vaccination in ALERT IIS by Epiweek, Cumulative Doses Compared to Last Season



## US Data (from CDC FluView):

Seasonal influenza activity in the United States has been elevated for four weeks and continues to increase.

### Viruses

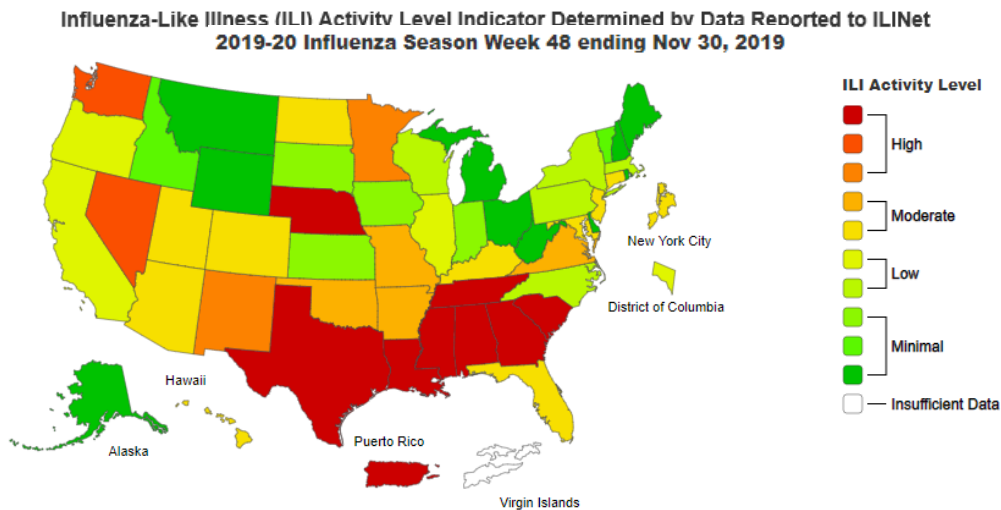
- **Clinical Lab:** 10.2% of respiratory specimens tested by clinical laboratories were positive for influenza viruses. This is higher than the previous week.
- **Public Health Lab:** Nationally, B/Victoria viruses are most common followed by A(H1N1)pdm09 and A(H3N2) viruses, but the predominant virus varies by region and age group.
- **Virus Characterization:** Genetic and antigenic characterization and antiviral susceptibility of viruses collected in the U.S. this season is now being reported.

### Illness

- **ILINet Outpatient Illness:** 3.5% of visits to health care providers were for influenza-like illness (ILI). ILI has been at or above the national baseline of 2.4% for four weeks. Nine of 10 regions were at or above their baselines.
- **ILINet Activity Map:** The number of jurisdictions experiencing high ILI activity increased to 13 this week, compared to 8 last week. In addition, 15 jurisdictions had moderate activity compared to 7 last week.
- **Geographic Spread:** The number of jurisdictions reporting regional or widespread activity increased to 24 this week from 15 last week.

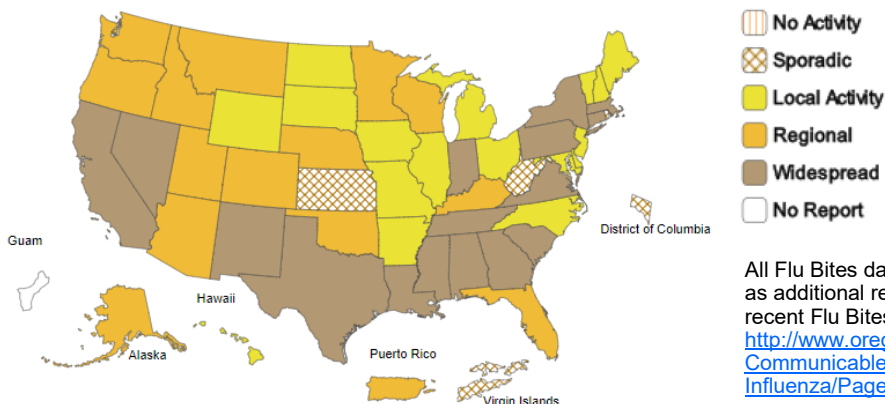
### Severe Disease

- **Hospitalizations:** The overall hospitalization rate for the season is 2.7 per 100,000. This is similar to what has been seen at this time during other recent seasons.
- **P&I Mortality:** 4.8% of deaths were attributed to pneumonia and influenza (P&I). This is below the epidemic threshold of 6.4%.
- **Pediatric Deaths:** One new influenza-associated pediatric death occurring during the 2019-2020 season was reported to CDC this week. The total for the season to date is 6.



**Map above:** This map uses the proportion of outpatient visits to ILINet sentinel providers for influenza-like illness to measure the ILI activity level within a state. It does not, however, measure the extent of geographic spread of flu within a state. Therefore, outbreaks occurring in a single city could cause the state to display high activity levels.

### Weekly Influenza Activity Estimates Reported by State and Territorial Epidemiologists Week Ending Nov 30, 2019 - Week 48



**Map left:** The map left measures the geographic spread of influenza viruses, but does not measure the intensity of influenza activity.

All Flu Bites data are preliminary and may change as additional reports are received. Find the most recent Flu Bites report online at:  
<http://www.oregon.gov/oha/ph/DiseasesConditions/CommunicableDisease/DiseaseSurveillanceData/Influenza/Pages/surveil.aspx>