



Oregon COVID-19 Daily Update

Summary as of Tuesday 05/19/2020



Operation Center	Status	Comment
State Emergency Coordination Center (ECC)	Activated	Activated at 1200 on 03/02/2020
State ESF-8 Oregon Health Authority	Activated	Agency Operations Center (AOC) activated on 01/21/2020

New Confirmed Cases: 33	New Presumptive^a Cases: 8	New Deaths: 2
--------------------------------	---	----------------------

Oregon COVID-19 Testing Results as reported to Orpheus*

Cumulative COVID-19 Testing in Oregon		Testing at Oregon State Public Health Lab	
Positive	3,636	Specimens received on 5/18	30
Negative	95,994	Test results released on 5/18	2
Total tested	99,630	Specimens pending as of 8:00 PM 5/18	28
Total deaths	140	Total tested at OSPHL	5,070

Age, Sex and Hospitalization Status for Confirmed and Presumptive^a COVID-19 Cases (Cumulative) Updated Daily

Cases by Age Group	n (%)	Cases by Sex (as reported to OHA)	n (%)
0 to 9	41 (1)	Female	1,963 (53)
10 to 19	134 (4)	Male	1,759 (47)
20 to 29	551 (15)	Non-binary	1 (0)
30 to 39	633 (17)	Not available	3 (0)
40 to 49	636 (17)	Total	3,726
50 to 59	654 (18)		
60 to 69	510 (14)	Hospitalized During Illness?	
70 to 79	329 (9)	Yes	714 (19)
80+	228 (6)	No	2,754 (74)
Not available	10 (0)	Not available	258 (7)
Total	3,726	Total	3,726

Race, Ethnicity, Select Symptoms and Risk Factors for Confirmed and Presumptive^a COVID-19 Cases Updated Weekly on Tuesdays

Cases by Race [†]	n (%)	Cases by Ethnicity [†]	n (%)	Health Care Worker?	n (%)
White	1,842 (50)	Hispanic	1,162 (32)	Yes	577 (16)
Black	86 (2)	Not Hispanic	2,103 (57)	No	2,579 (70)
Asian	135 (4)	Not available	395 (11)	Not available	504 (14)
AI/AN**	67 (2)	Total	3,660	Total	3,660
Pacific Islander	47 (1)				
Other	1,023 (28)			Reside or Work in Congregate Setting?‡	
>1 race	70 (2)			Yes	758 (21)
Not available	390 (11)			No	2,395 (65)
Total	3,660			Not available	507 (14)
				Total	3,660

^a Presumptive cases are people without a positive diagnostic test who have COVID-19-like symptoms and had close contact with someone diagnosed with a laboratory confirmed case.

*Orpheus is the state of Oregon's electronic disease surveillance system for reportable diseases

[†]Provisional

[‡]Congregate settings include, but are not limited to, long-term care facilities, group homes, prisons, shelters, etc.



Oregon COVID-19 Daily Update

Summary as of Tuesday 05/19/2020



Hospital Capacity and Usage in Oregon as reported to HOSCAP*					
Overall Capacity	Available	Total Staffed	COVID-19 Details	Patients with Suspected or Confirmed COVID-19	Only Patients with Confirmed COVID-19
Adult ICU beds	250	800	Current hospitalized patients	137	52
Adult non-ICU beds	1,939	6,776	Current patients in ICU Beds	43	20
Pediatric NICU/PICU beds	84	302	Current patients on ventilators	13	9
Pediatric non-ICU beds	145	346			
Ventilators	794				

*Every hospital in Oregon is asked to submit data twice daily to Oregon’s Hospital Capacity Web System (HOSCAP). Data are based on the most recent report from the hospitals, available as of 9:00am. Hospital staff are asked to enter bed capacity information, by type, as well as the number of patients with suspected or confirmed COVID-19 illness who are currently hospitalized at the time of data entry. These data may conflict with hospitalization status in Orpheus due to case reporting and investigation lags and temporary discrepancies in case classification.

ECC Personal Protective Equipment (PPE) & Supply Inventory

PPE information is available on Oregon’s COVID-19 Response [Personal Protective Equipment](#) webpage.



Oregon COVID-19 Daily Update

Summary as of Tuesday 05/19/2020

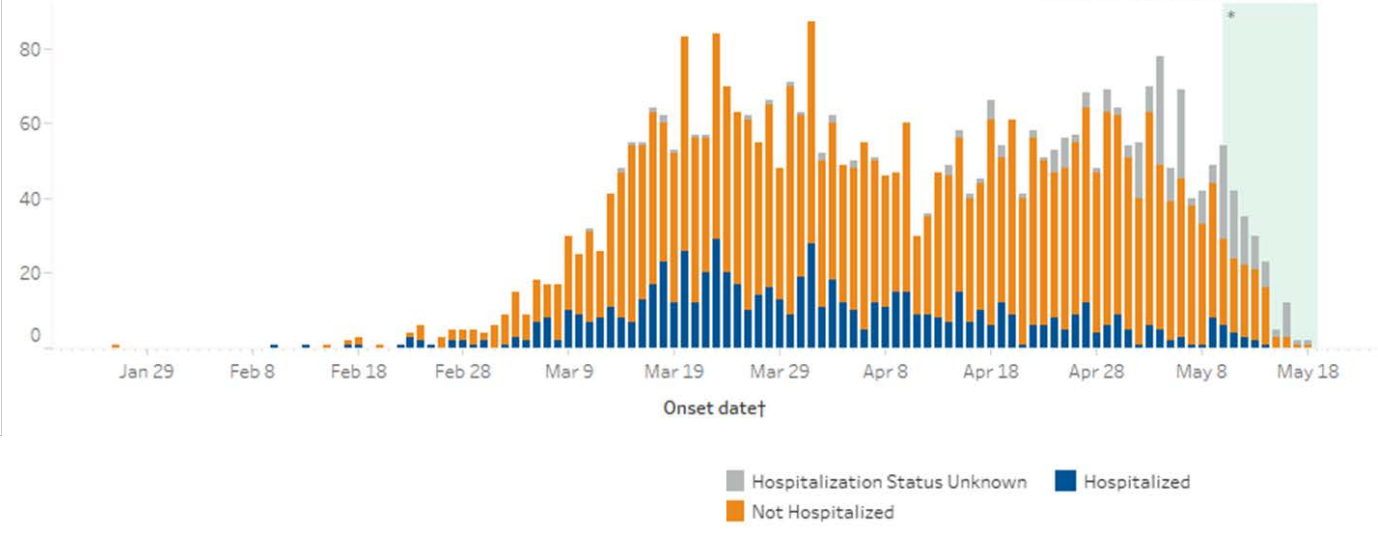


Oregon's Epi Curve: COVID-19 cases

This chart shows the number of Oregonians who have been identified as COVID-19 cases and whether they were ever hospitalized for their illness.‡

Total Cases	Hospitalized	Not Hospitalized	Hospitalization Status Unknown
3,726	714	2,754	258

*Illnesses that began during this time period may not yet be reported.



‡ COVID-19 cases include both confirmed and presumptive cases.

† Cases are counted by onset date (the date the person started having symptoms). When a person with symptoms did not report their onset date or when a person without symptoms is tested, their onset date is calculated as 2 days before the specimen was collected for testing.

COVID-19 data are provisional and subject to change.



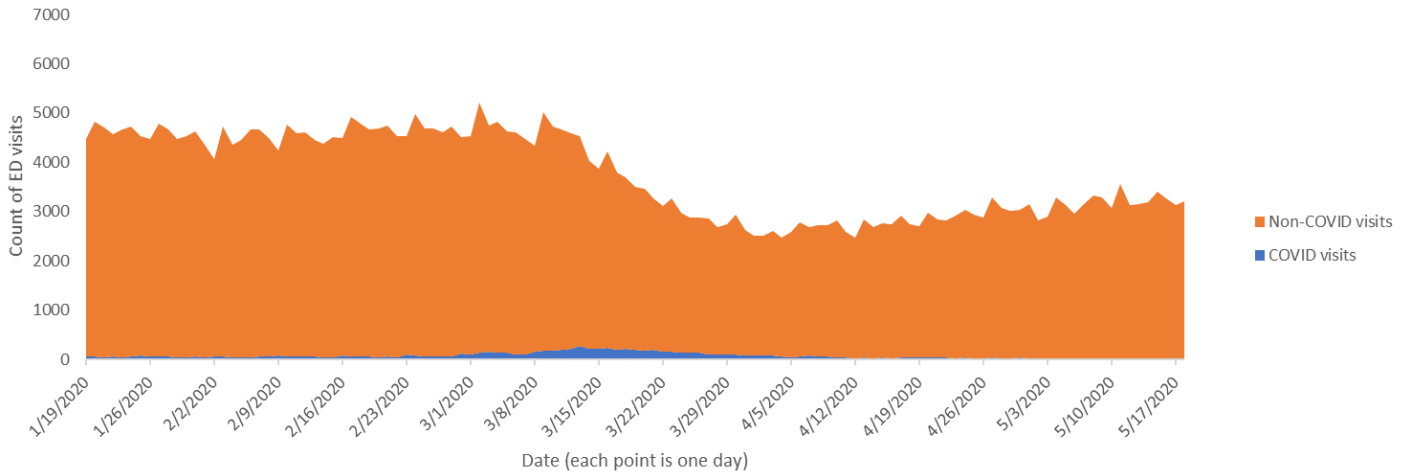
Oregon COVID-19 Daily Update

Summary as of Tuesday 05/19/2020

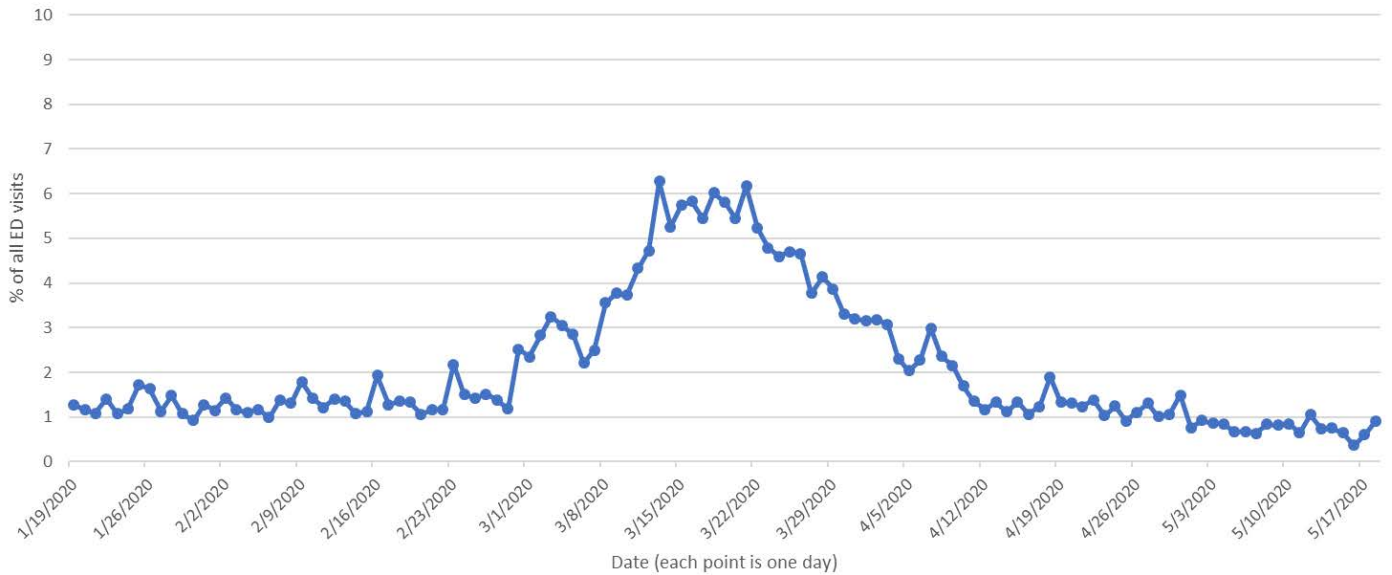


Emergency Department Visits in Oregon as reported to Oregon ESSENCE*

COVID-like visits still make up a small proportion of all reported ED visits, and total ED visits have decreased...



... and the percentage of COVID-like visits has decreased.



*Oregon ESSENCE receives daily reports of emergency department visits from all 60 non-Federal hospitals in Oregon.



Oregon COVID-19 Daily Update

Summary as of Tuesday 05/19/2020



Oregon Resources

[OHA Public Health COVID-19](#)
[Local Public Health Authority Directory](#)
[ODE and OHA's CD Guidance](#)
[Emerging Respiratory Infections: COVID-19](#)
[OEM COVID-19 Resources](#)
[Oregon Coronavirus Information and Resources](#)
[OHA COVID-19 Data Dashboard](#)

Other Resources

[CDC Coronavirus Disease 2019 \(COVID-19\)](#)
[CDC Hygiene Etiquette](#)
[CDC Handwashing Campaign](#)
[SAMHSA Coping with Stress During Outbreaks](#)
[CDC Helping Children Cope with Emergencies](#)

Acronyms

AOC: Agency Operations Center
CD: Communicable Disease
CDC: Centers for Disease Control
COVID-19: Coronavirus Disease 2019
DUL: Data Unit Leader
ECC: Emergency Coordination Center
ED: Emergency Department
HOSCAP: Hospital Capacity Web System
IC: Incident Commander
ICU: Intensive Care Unit
NICU: Neonatal Intensive Care Unit

OEM: Oregon Office of Emergency Management
OHA: Oregon Health Authority
OSFM: Oregon Office of State Fire Marshal
OSPHL: Oregon State Public Health Laboratory
PICU: Pediatric Intensive Care Unit
PIO: Public Information Officer
PPE: Personal Protective Equipment
PSC: Planning Section Chief
SITL: Situation Unit Leader

This document is available in other languages, large print, braille or other formats upon request. For ADA accommodations, please contact the COVID-19 **Health Information Center** at **971-673-2097** or email orcovid19.media@dhsosha.state.or.us. We accept all relay calls or dial 711.

Prepared by: Maria Ross PSC

Reviewed by: Maria Ross PSC, Jessica Duke DUL, Larry Bingham PIO

Approved by: Melissa Powell IC