

Columbia Gorge Economic Indicators July 2017 data

Hood River's Labor Force Monthly

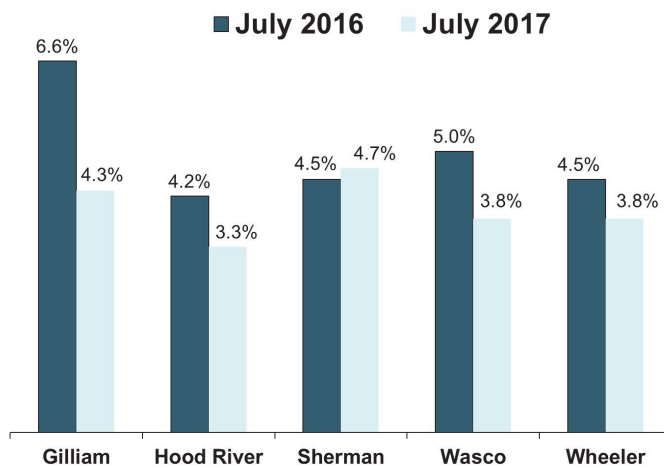
Employed: **15,756 (+1,767)**

Unemployed: **615 (+60)**

Labor Force: **16,371 (+1,827)**

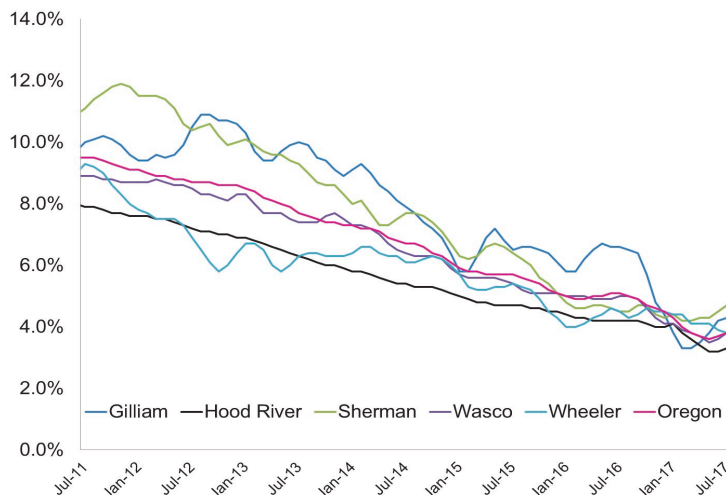
Local Area Unemployment Rates

Seasonally Adjusted as of Jul 2017



Monthly Unemployment Rates

Seasonally Adjusted as of Jul 2017



Industry Gains and Losses

Over the Year Employment Change from Jul 2016

Hood River Net Job Growth



Wasco Net Job Growth



Gilliam-largest changes

Professional and business services (+20)

Sherman-largest changes

Trade, trans., and utilities (-20)

Wheeler-largest changes

Leisure and hospitality (+15)
Government (+10)