

Data at a Glance February 12–February 18, 2017 (Week 7)

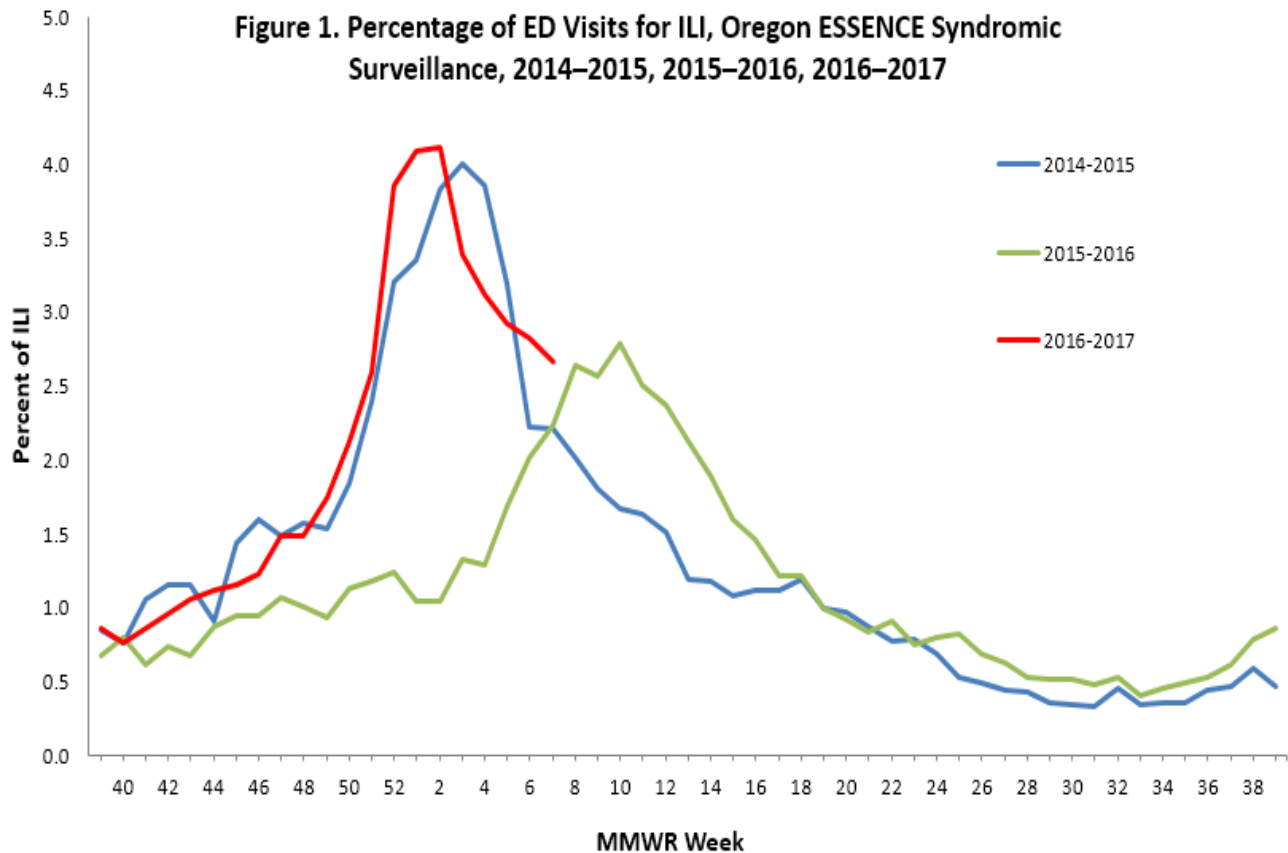
	Current Week (7)	Previous Week (6)
Percentage of emergency department visits for ILI ¹	2.7%	2.8%
Percentage positive influenza tests ²	14.2%	19.2%
Influenza-associated hospitalizations ³	29	89
Reported ILI/influenza outbreaks	2	5
Influenza-associated pediatric mortality	0	0
Percentage of outpatient visits for ILI	3.0%	3.5%
Respiratory Syncytial Virus (RSV) activity ⁴	23%	18%

¹Based on Oregon ESSENCE Syndromic Surveillance. Data represent statewide aggregate percent.

²Percent positivity based on data from Oregon reporters to the National Respiratory and Enteric Virus Surveillance System (NREVSS)

³Based on hospitalization surveillance in Clackamas, Multnomah, and Washington counties only.

⁴Percent positivity based on data from Oregon's RSV Laboratory Surveillance System.



Oregon ESSENCE Syndromic Surveillance: Oregon Public Health tracks hospital emergency department (ED) visits throughout the state using the Oregon ESSENCE syndromic surveillance system. ESSENCE categorizes chief complaints into syndrome categories, which include ILI. Figure 1, above, displays percentages for all of Oregon during this flu season compared with the previous two flu seasons. The percent of ED visits for ILI in all of Oregon was 2.7% during week 7, 2017.

Laboratory Surveillance:

The National Respiratory and Enteric Virus Surveillance System (NREVSS) is a laboratory-based system that monitors influenza and other respiratory viruses circulating the United States. More information is at CDC's [website](#).

Table 1 shows the current week and cumulative totals (since October 2, 2016) for influenza in specimens tested at the Oregon laboratories reporting to NREVSS. Figure 2 shows that 14.2% of specimens tested at Oregon labs were positive for influenza during week 7, and the bar chart displays the number of influenza-positive tests by flu type and percent positivity.

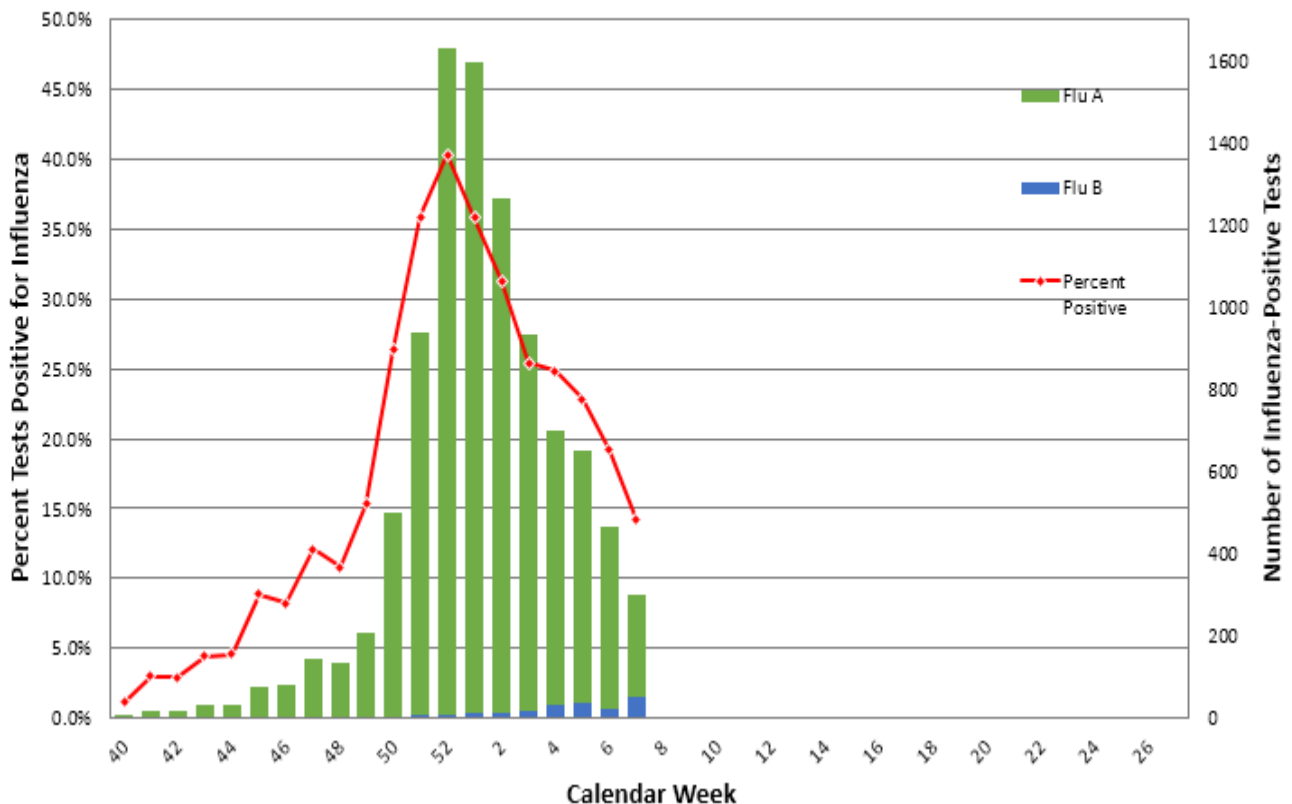
Participation by laboratories is voluntary. Current labs participating in NREVSS in Oregon include:

- Legacy Emanuel Hospital and Health Center, Portland, OR
- Mercy Medical Center, Roseburg, OR
- Oregon Medical Laboratories, Eugene, OR
- Oregon State Public Health Laboratories, Portland, OR
- Salem Hospital, Salem, OR
- Santiam Memorial Hospital, Stayton, OR

Table 1. Influenza Test Results in Oregon, NREVSS, 2016–2017.

	Current Week	Cumulative
No. of specimens tested	2,335	41,408
No. of positive specimens (%)	331 (14.2%)	10,129 (21.5%)
<i>Positive specimens by type</i>		
Influenza A	246 (74.3%)	9,495 (94%)
Influenza B	53 (16.0%)	235 (2%)
Type Unavailable	32 (9.7%)	399 (4%)

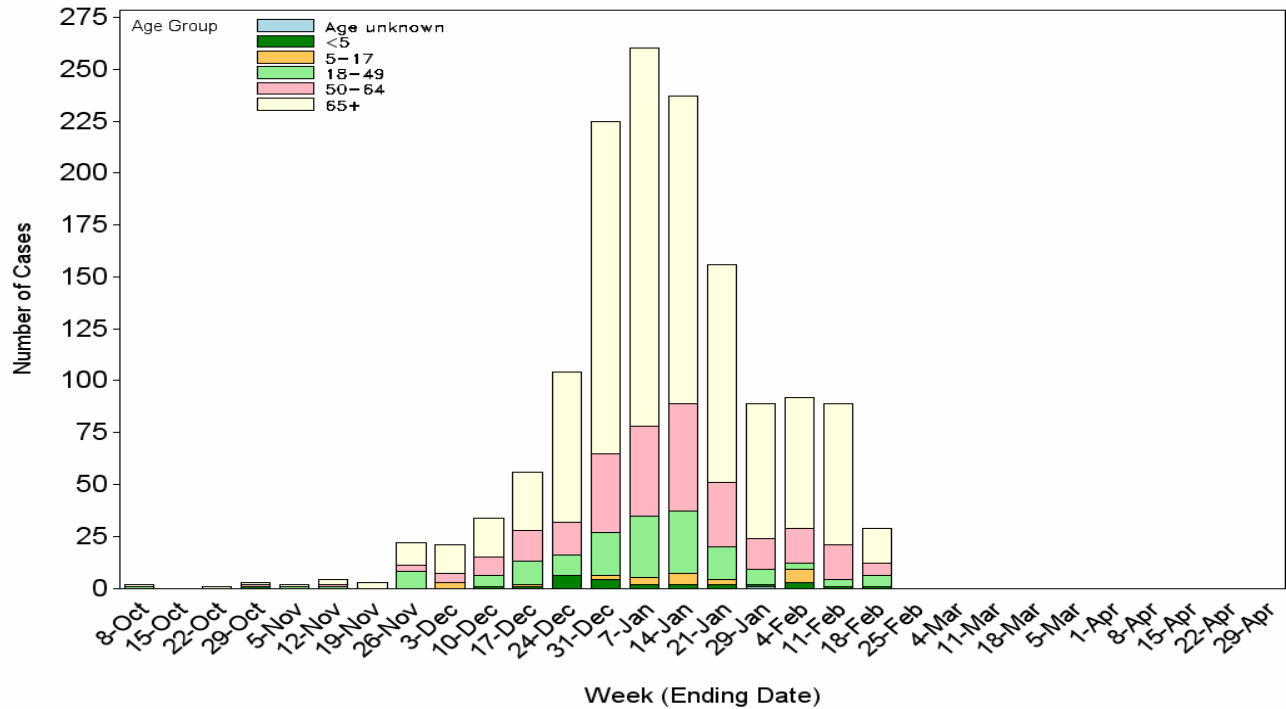
**Figure 2. Oregon Influenza Surveillance
Percent Positive Influenza Tests by Week, NREVSS
2016–2017 Season**



Hospitalizations:

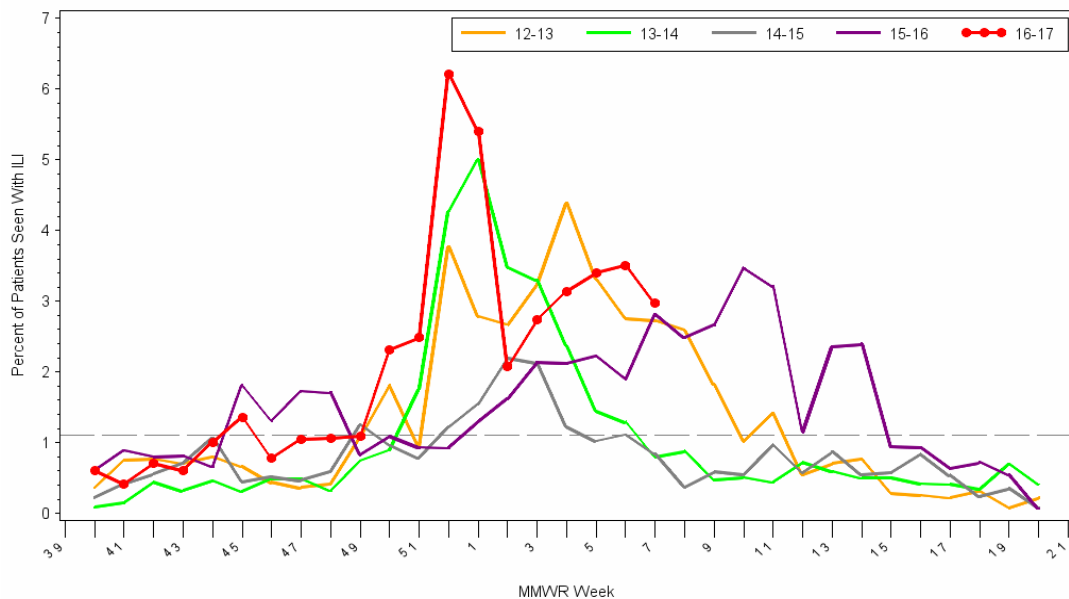
In Clackamas, Multnomah, and Washington counties 1,428 total reported influenza-associated hospitalizations occurred up through MMWR week 7, with 29 cases reported during week 7. Of cases with type information, 1,408 (98.5%) were Influenza A, and 21 (1.5%) were Flu B. 547 Influenza A specimens were subtyped, with 542 (99.1%) being H3, and 5 (0.9%) being 2009 H1N1.

Figure 3. Portland Metro Area Influenza-Associated Hospitalizations by Week and Age Group, 2016-2017



ILINet: Oregon’s Outpatient Influenza-like Illness Surveillance Network: Oregon’s outpatient influenza-like illness (ILI) network comprises 24 voluntary healthcare providers from across Oregon who report the number of patients with influenza-like illness as well as total number of patient visits for each week during the surveillance season. The percent of outpatients seen with ILI for week 7 of 2017 was 3.0% which is above Oregon’s seasonal threshold of 1.1%.*

Oregon Health Authority, Acute and Communicable Disease Prevention 24FEB17
Oregon Outpatient Influenza-Like Illness Surveillance Network (ILINet)
 Percent of Outpatients with Influenza-like Illness (ILI)
 2012-2013, 2013-2014, 2014-2015, 2015-2016, 2016-2017



Note: ILI is defined as fever (≥100°F) and cough or sore throat.

*The seasonal ILI baseline (threshold) is calculated by CDC and averages the ILI seen during non-influenza weeks in the northwestern region of the US, including AK, WA, OR, and ID.

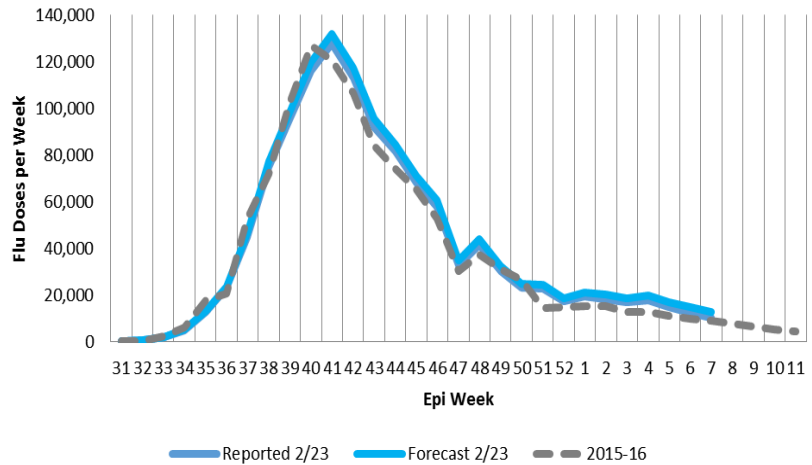
All Flu Bites data provided are preliminary and may change as additional reports are received.

Surveillance weeks run from Sunday through Saturday
 Sentinel providers report the number of patients seen with influenza-like illness as well as total patients seen each week.

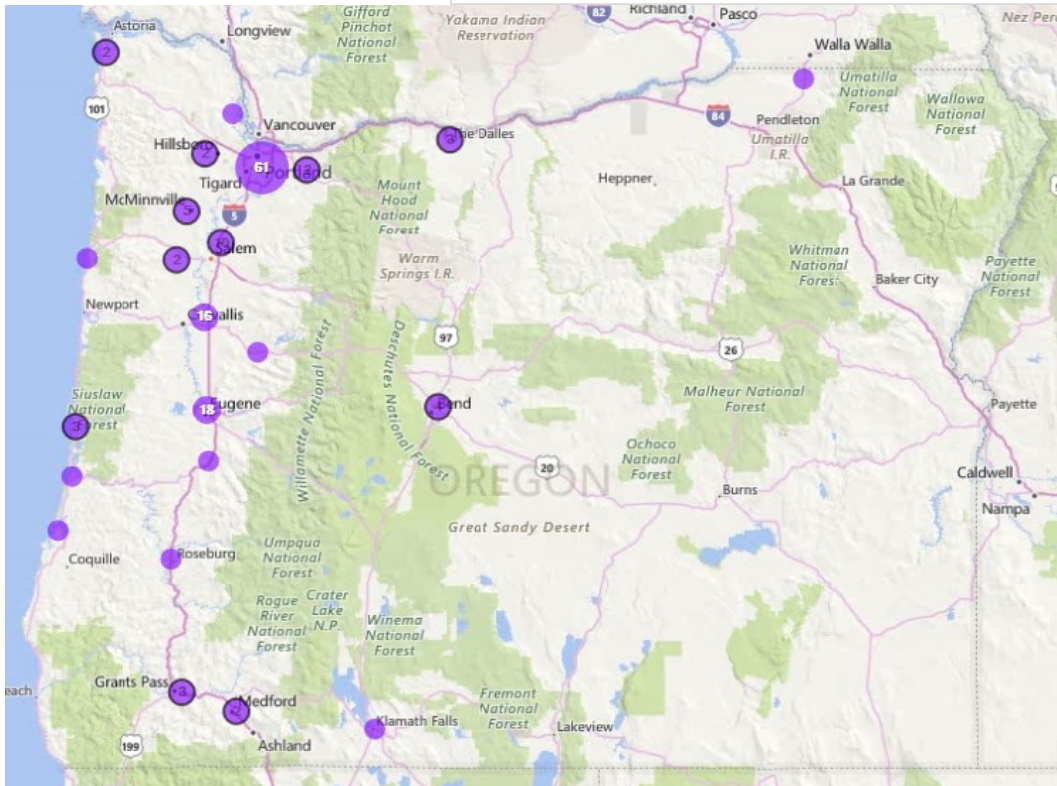
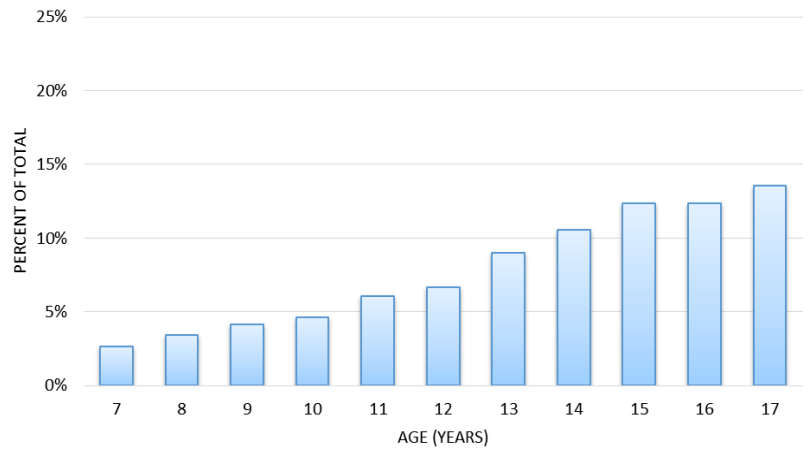
Immunizations: This week's seasonal influenza immunization reporting is based on ALERT IIS data through Epiweek 7 of 2017 (Feb 12th to Feb 18th). To date ALERT IIS has received 1.2 million reports of influenza immunizations for Oregonians in the current flu season. Weekly totals of influenza immunizations are expected to continue declining for the rest of the influenza season. Based on prior season experience, over 97% of this season's influenza immunizations have already been given as of Feb. 18th.

In the current season to date, 31% of reported influenza immunizations for adults age 18 to 64 were given at a pharmacy. For seniors age 65+, 43% of reported influenza immunizations were given at a pharmacy. While Oregon allows pharmacists to immunize down to age seven without a prescription, only a small proportion of eligible children used a pharmacy for influenza immunization, as shown in the figure below.

2016/2017 Oregon Flu Vaccine Doses in ALERT IIS by Epiweek



Oregon Pharmacy Influenza Immunizations as a Percentage of Total for Children Age 7 to 17, as of Feb 23rd 2017



Outbreaks: The map at left shows the distribution of outbreaks in the state of Oregon.

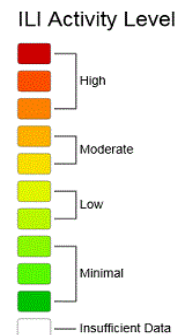
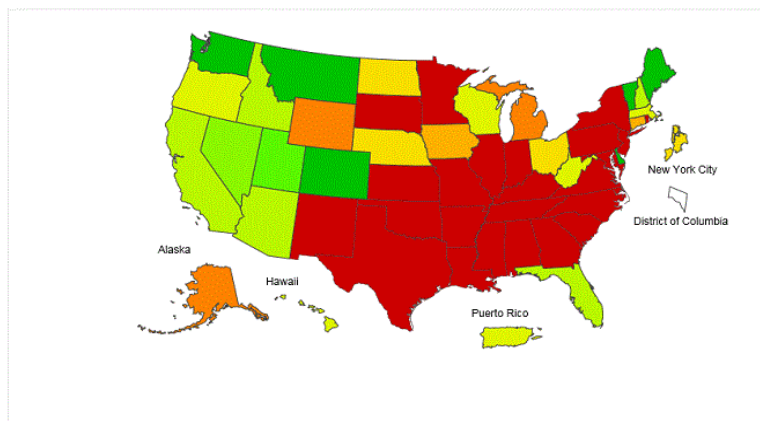
Since October 1, 2016, there have been 142 confirmed flu outbreaks.

2 new flu outbreaks were reported during week 7.

US Data (from CDC FluView): During week 7 (February 12-18 2017), influenza activity decreased slightly but remained elevated in the United States.

- **Viral Surveillance:** The most frequently identified influenza virus subtype reported by public health laboratories during week 7 was influenza A (H3). The percentage of respiratory specimens testing positive for influenza in clinical laboratories decreased slightly but remained elevated.
- **Pneumonia and Influenza Mortality:** The proportion of deaths attributed to pneumonia and influenza (P&I) was above the system-specific epidemic threshold in the National Center for Health Statistics (NCHS) Mortality Surveillance System.
- **Influenza-associated Pediatric Deaths:** Five influenza-associated pediatric deaths were reported.
- **Influenza-associated Hospitalizations:** A cumulative rate for the season of 33.7 laboratory-confirmed influenza-associated hospitalizations per 100,000 population was reported.
- **Outpatient Illness Surveillance:** The proportion of outpatient visits for influenza-like illness (ILI) was 4.8%, which is above the national baseline of 2.2%. Nine regions reported ILI at or above their region-specific baseline levels. 27 states experienced high ILI activity; New York City and five states experienced moderate ILI activity; Puerto Rico and 10 states experienced low ILI activity; eight states experienced minimal ILI activity; and the District of Columbia had insufficient data.
- **Geographic Spread of Influenza:** The geographic spread of influenza in Puerto Rico and 44 states was reported as widespread; Guam and four states reported regional activity; the District of Columbia and one state reported local activity; one state reported sporadic activity; and the U.S. Virgin Islands reported no activity.

Influenza-Like Illness (ILI) Activity Level Indicator Determined by Data Reported to ILINet
2016-17 Influenza Season Week 7 ending Feb 18, 2017



Map left: This map uses the proportion of outpatient visits to ILINet sentinel providers for influenza-like illness to measure the ILI activity level within a state. It does not, however, measure the extent of geographic spread of flu within a state. Therefore, outbreaks occurring in a single city could cause the state

Weekly Influenza Activity Estimates Reported by State & Territorial Epidemiologists*
Week ending February 18, 2017 - Week 7



* The map left measures the geographic spread of influenza viruses, but does not measure the intensity of influenza activity.