

Oregon Health Authority

Public Health Division

Center for Public Health Practice

June 2016

MEMENTO MORBI

A Monthly Communicable Disease Surveillance Report



About *Memento Morbi*

This monthly report contains an early source of infectious disease surveillance data for Oregon. These data are important for monitoring early trends of notifiable infectious diseases and for targeting prevention and control efforts. The purpose of this document is to summarize important information data users should know about the report to facilitate proper analysis and interpretation.

1. This report comprises compilations of data received by offices of the Oregon State Public Health Division (OSPHD).
2. The diseases reportable by law may increase or decrease over time.
3. The reporting status of diseases included may be determined by state law or be acquired through voluntary submissions.
4. Data are provisional and subject to change upon the completion of ongoing disease investigations.
5. *Memento Morbi* is prepared in the two weeks following the end of the calendar month; delayed case reports would be included in later issues. The same would apply to subsequent differences resulting from duplicates or erroneous data entries in individual reports.
6. Temporal distributions are generally based upon the date of onset or if unavailable, the next available date for epidemiologic purposes, including date of specimen collection, date reported to the local health department, or date reported to OSPHD. Exceptions include tuberculosis cases by date of report to CDC and HIV/AIDS reported by date of diagnosis, STDs by local health report date. Using these various dates were replaced with MMWR event date in 2014. This date is defined by CDC and in general is a close approximation to the previously mentioned dates.
7. Starting in August of 2012, the STD data are now presented in more detail on the website

<http://public.health.oregon.gov/DISEASES/CONDITIONS/COMMUNICABLEDISEASE/DISEASESURVEILLANCEDATA/STD/Pages/index.aspx#countyquarter>

and the HIV data at

<http://public.health.oregon.gov/DiseasesConditions/CommunicableDisease/DiseaseSurveillanceData/HIVData/Pages/epiprofile.aspx>

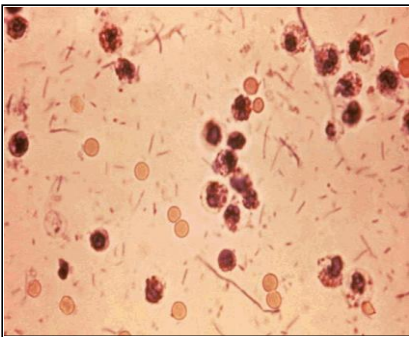
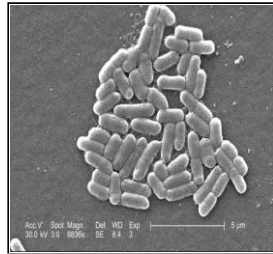
8. Data pertaining to race and ethnicity may be incomplete and may have been collected differently for the various notifiable diseases and across time.

In Summary

These data are subject to change, reflecting recent entry of information received from reporting sources.

Table of Contents

About Memento Morbi	3
Notifiable Diseases by Month	4
Notifiable Diseases by County	6
Notifiable Diseases of Low Incidence	9
Sexually Transmitted Diseases: Chlamydia, gonorrhea, HIV, syphilis	10
Notifiable Diseases by Age, Sex, Race and County	11



Reported Cases of Selected Notifiable Diseases or Conditions in Oregon by Month
2016

	Jan	Feb	Mar	Apr	May	Jun	YTD
Botulism	0	0	0	1	0	0	1
Brucellosis	0	0	0	0	1	0	1
Campylobacter	48	52	60	74	91	95	420
Carbapenem-resistant	15	10	17	17	14	14	87
Coccidiomycosis	1	2	3	0	1	1	8
Cryptococcosis	4	9	4	2	2	2	23
Cryptosporidiosis	14	27	21	22	30	20	134
E. coli(STEC)	7	11	11	5	17	15	66
Giardiasis	22	29	29	25	19	23	147
HUS	1	0	1	1	0	0	3
Haemophilus influenza	10	14	8	12	4	4	52
Hantavirus pulmonary	1	0	0	0	0	0	1
Hepatitis A (acute)	1	1	2	2	1	4	11
Hepatitis B (acute)	2	3	2	2	1	3	13
Hepatitis B (chronic)	39	34	45	36	36	23	213
Hepatitis C (acute)	2	4	4	3	3	1	17
Hepatitis C (chronic)	511	516	517	488	530	466	3028
Legionellosis	1	4	2	4	5	2	18
Listeriosis	1	0	0	1	2	1	5
Lyme disease	3	5	5	3	8	7	31
Malaria	1	1	1	2	1	1	7
Meningococcal Disease	3	1	2	1	2	1	10
Mumps	0	0	0	2	1	0	3
Non Mycobacterium TB	4	9	2	6	2	2	25
Pertussis	12	15	11	17	27	20	102
Q fever	0	1	0	0	0	1	2
Relapsing Fever	0	0	0	1	0	0	1
Salmonella	28	17	30	34	32	52	193
Shigella	29	19	13	7	4	6	78
Taeniasis	0	0	0	1	0	0	1
Tularemia	0	0	0	0	0	1	1
Vibrio infections	2	1	0	2	0	1	6
Yersinia	3	3	2	1	1	1	11
Zika	3	2	0	3	1	4	13
YTD	768	790	792	775	836	771	4732

Reported Cases of Selected Notifiable Diseases or Conditions in Oregon by Month
2015

	Jan	Feb	Mar	Apr	May	Jun	YTD
Babesiosis	0	0	1	0	1	0	2
Botulism	0	1	0	1	0	1	3
Campylobacter	74	60	54	68	84	114	454
Carbapenem-resistant	4	5	1	5	1	5	21
Coccidiomycosis	1	0	2	1	1	2	7
Cryptococcosis	5	6	9	7	7	6	40
Cryptosporidiosis	10	12	15	12	11	13	73
E. coli(STEC)	14	6	14	12	20	17	83
Ehrlichiosis	0	0	0	0	0	1	1
Giardiasis	31	40	34	21	18	22	166
HUS	2	0	0	0	1	1	4
Haemophilus influenza	15	12	13	13	5	9	67
Hepatitis A (acute)	2	5	1	2	2	4	16
Hepatitis B (acute)	0	1	2	0	4	4	11
Hepatitis B (chronic)	48	43	32	47	35	40	245
Hepatitis C (acute)	0	1	0	2	2	2	7
Hepatitis C (chronic)	477	482	555	524	479	570	3087
Legionellosis	2	4	3	6	5	3	23
Listeriosis	4	0	1	1	3	1	10
Lyme disease	1	0	3	3	6	4	17
Malaria	4	0	1	1	1	1	8
Measles	2	0	0	0	0	0	2
Meningococcal Disease	3	3	5	1	2	1	15
Mumps	0	0	0	0	0	3	3
Non Mycobacterium TB	4	5	3	6	7	1	26
Pertussis	38	50	46	72	82	91	379
Q fever	0	1	0	0	1	0	2
Relapsing Fever	0	0	0	0	1	0	1
Salmonella	23	17	31	45	56	55	227
Shigella	1	2	3	3	3	5	17
Taeniasis	1	0	0	0	0	0	1
Tularemia	0	0	1	0	1	0	2
Vibrio infections	2	1	0	0	1	3	7
Yersinia	0	2	0	2	0	1	5
YTD	768	759	830	855	840	980	5032

Reported Cases of Select Notifiable Diseases or Conditions in Oregon by County
January - June 2016

	Baker	Benton	Clackamas	Clatsop	Columbia	Coos	Crook	Curry	Deschutes	Douglas	Gilliam	Grant	Harney
Botulism	0	0	0	0	0	0	0	0	0	0	0	0	0
Brucellosis	0	0	0	0	0	0	0	0	0	0	0	0	0
Campylobacter	3	10	48	5	3	4	1	1	26	4	0	1	3
Carbapenem-resistant	0	2	12	1	2	2	0	0	10	3	0	0	0
Coccidiomycosis	0	0	0	0	0	0	0	0	1	0	0	0	0
Cryptococcosis	0	1	2	0	0	0	1	0	6	0	0	0	0
Cryptosporidiosis	0	4	12	2	1	0	4	0	4	5	0	0	0
E. coli(STEC)	0	1	2	0	1	0	1	0	10	0	0	0	0
Giardiasis	0	3	10	3	0	1	0	0	19	4	0	0	0
HUS	0	0	0	0	0	0	0	0	0	0	0	0	0
Haemophilus influenza	1	2	7	1	1	0	0	0	4	0	1	0	1
Hantavirus pulmonary	0	0	0	0	0	0	0	0	0	0	0	0	0
Hepatitis A (acute)	0	0	4	0	0	1	0	0	0	0	0	0	0
Hepatitis B (acute)	0	0	1	0	2	0	0	0	0	0	0	0	0
Hepatitis B (chronic)	0	5	18	1	1	1	1	1	2	9	0	0	0
Hepatitis C (acute)	0	0	2	0	0	0	0	0	1	4	0	0	0
Hepatitis C (chronic)	18	24	213	48	52	68	23	22	111	127	1	6	3
Legionellosis	0	0	1	0	2	0	0	0	0	0	0	0	0
Listeriosis	0	0	0	0	0	0	0	0	0	0	0	0	0
Lyme disease	0	2	2	0	1	0	1	0	0	3	0	0	0
Malaria	0	0	3	0	0	0	0	0	0	0	0	0	0
Meningococcal Disease	0	0	1	0	1	0	0	0	0	2	0	0	0
Mumps	0	0	0	0	0	0	0	0	0	0	0	0	0
Non Mycobacterium TB	0	0	4	0	0	0	0	1	0	0	0	0	0
Pertussis	0	11	20	1	1	0	0	0	3	0	0	0	0
Q fever	0	0	0	0	0	0	0	0	0	0	0	0	0
Relapsing Fever	0	0	0	0	0	0	0	0	0	0	0	0	0
Salmonella	2	2	19	2	2	2	0	0	11	5	0	0	1
Shigella	0	0	3	0	1	0	0	0	4	0	0	0	0
Taeniasis	0	0	0	0	0	0	0	0	0	0	0	0	0
Tularemia	0	0	0	0	0	0	0	0	0	0	0	0	0
Vibrio infections	0	0	0	0	1	0	0	0	1	0	0	0	0
Yersinia	0	0	2	0	0	0	0	0	1	0	0	0	0
Zika	0	1	0	0	0	0	0	0	0	1	0	0	0
All	24	68	386	64	72	79	32	25	214	167	2	7	8

Reported Cases of Select Notifiable Diseases or Conditions in Oregon by County
January - June 2016

	Hood River	Jackson	Jefferson	Josephine	Klamath	Lake	Lane	Lincoln	Linn	Malheur	Marion	Morrow	Multnomah
Botulism	0	1	0	0	0	0	0	0	0	0	0	0	0
Brucellosis	0	0	0	0	0	0	0	0	0	0	0	0	1
Campylobacter	2	26	3	9	3	2	54	3	20	6	27	0	80
Carbapenem-resistant	0	3	1	0	4	0	3	1	4	0	6	0	15
Coccidiomycosis	0	0	0	0	1	0	0	2	0	0	2	0	1
Cryptococcosis	0	1	0	0	0	0	2	0	0	0	1	0	2
Cryptosporidiosis	0	8	0	0	5	0	15	2	8	0	9	0	32
E. coli(STEC)	0	1	0	1	5	1	12	0	2	0	2	0	14
Giardiasis	0	3	0	1	1	0	11	1	1	1	8	0	50
HUS	0	1	0	0	1	0	0	0	0	0	0	1	0
Haemophilus influenza	0	2	0	5	1	0	4	0	2	0	2	0	9
Hantavirus pulmonary	0	0	0	0	0	0	0	0	0	0	0	0	0
Hepatitis A (acute)	2	0	0	0	0	0	1	0	0	1	0	0	2
Hepatitis B (acute)	0	1	0	0	0	0	2	0	0	0	0	0	1
Hepatitis B (chronic)	2	8	0	0	0	0	7	1	2	0	8	0	88
Hepatitis C (acute)	0	0	0	0	0	0	4	0	0	0	1	0	3
Hepatitis C (chronic)	10	203	27	106	53	11	264	43	99	45	230	3	712
Legionellosis	0	2	0	0	0	0	2	0	0	1	1	0	3
Listeriosis	0	0	0	0	0	0	0	0	0	0	2	0	1
Lyme disease	0	5	0	4	0	0	2	1	1	0	2	1	4
Malaria	0	0	0	0	0	0	0	0	0	0	1	0	2
Meningococcal Disease	0	3	0	0	0	0	0	0	0	0	0	0	3
Mumps	0	0	1	0	0	0	0	0	0	0	0	0	0
Non Mycobacterium TB	0	3	0	0	0	0	7	0	2	0	1	0	5
Pertussis	2	2	1	1	0	0	10	0	2	0	17	0	13
Q fever	0	0	0	0	0	0	1	0	0	0	0	0	1
Relapsing Fever	0	0	0	0	0	0	0	0	0	0	0	0	0
Salmonella	2	12	1	4	4	0	12	1	3	1	11	0	42
Shigella	0	1	0	0	1	0	4	0	0	0	2	0	51
Taeniasis	0	0	0	0	0	0	0	0	0	0	0	0	0
Tularemia	0	0	0	0	0	0	0	0	0	0	0	0	0
Vibrio infections	0	0	1	0	0	0	0	0	0	0	0	0	0
Yersinia	0	0	0	0	0	0	1	0	0	0	0	1	4
Zika	0	0	0	0	0	0	2	0	1	0	3	0	3
All	20	286	35	131	79	14	420	55	147	55	336	6	1142

Reported Cases of Select Notifiable Diseases or Conditions in Oregon by County
January - June 2016

	Polk	Sherman	Tillamook	Umatilla	Union	Unknown	Wallowa	Wasco	Washington	Wheeler	Yamhill	All
Botulism	0	0	0	0	0	0	0	0	0	0	0	1
Brucellosis	0	0	0	0	0	0	0	0	0	0	0	1
Campylobacter	4	0	4	9	4	0	0	2	48	0	5	420
Carbapenem-resistant	2	0	1	4	0	0	0	0	8	0	3	87
Coccidiomycosis	0	0	0	0	0	0	0	0	0	0	1	8
Cryptococcosis	0	0	0	0	0	0	0	0	6	0	1	23
Cryptosporidiosis	0	1	3	0	1	0	0	0	17	1	0	134
E. coli(STEC)	0	0	1	0	0	0	0	0	11	0	1	66
Giardiasis	2	0	0	0	2	0	1	1	22	0	2	147
HUS	0	0	0	0	0	0	0	0	0	0	0	3
Haemophilus influenza	0	0	0	0	1	0	0	0	7	0	1	52
Hantavirus pulmonary	0	0	0	1	0	0	0	0	0	0	0	1
Hepatitis A (acute)	0	0	0	0	0	0	0	0	0	0	0	11
Hepatitis B (acute)	0	0	0	1	0	0	0	0	5	0	0	13
Hepatitis B (chronic)	1	0	1	1	1	1	0	1	51	0	1	213
Hepatitis C (acute)	0	0	0	0	0	0	0	0	1	0	1	17
Hepatitis C (chronic)	38	2	17	60	15	0	6	25	267	2	74	3028
Legionellosis	1	0	0	0	1	0	0	0	4	0	0	18
Listeriosis	0	0	0	0	0	0	0	0	2	0	0	5
Lyme disease	0	0	0	0	0	0	0	0	2	0	0	31
Malaria	0	0	0	0	0	0	0	0	1	0	0	7
Meningococcal Disease	0	0	0	0	0	0	0	0	0	0	0	10
Mumps	0	0	0	0	0	0	0	0	2	0	0	3
Non Mycobacterium TB	0	0	0	0	1	0	0	0	1	0	0	25
Pertussis	4	0	0	0	0	0	0	2	11	0	1	102
Q fever	0	0	0	0	0	0	0	0	0	0	0	2
Relapsing Fever	0	0	0	0	0	0	0	0	1	0	0	1
Salmonella	4	0	0	1	0	0	0	1	40	0	8	193
Shigella	0	0	0	0	0	0	0	0	10	0	1	78
Taeniasis	0	0	0	0	0	0	0	0	1	0	0	1
Tularemia	1	0	0	0	0	0	0	0	0	0	0	1
Vibrio infections	1	0	0	0	0	0	0	0	2	0	0	6
Yersinia	0	0	0	0	0	0	0	0	2	0	0	11
Zika	0	0	0	0	0	0	0	0	2	0	0	13
All	58	3	27	77	26	1	7	32	524	3	100	4732

Reported Cases of Low Incident Notifiable Diseases or Conditions by Year in Oregon
January - June

	2007	2008	2009	2010	2011	2012	2013	2014	2015	2016	Total
Babesiosis	0	0	1	0	0	0	0	0	2	0	3
Botulism	0	1	0	0	1	3	3	0	3	1	12
Brucellosis	0	0	2	0	0	0	1	2	0	1	6
Chikungunya	0	0	0	0	0	0	0	10	0	0	10
Cyclosporiasis	0	0	0	0	0	1	0	2	0	0	3
Ehrlichiosis	0	1	2	0	1	0	0	0	1	0	5
Hantavirus pulmonary	1	0	1	3	2	1	1	2	0	1	12
Leishmaniasis	0	0	0	0	0	0	1	0	0	0	1
Leprosy	1	0	1	0	0	0	0	0	0	0	2
Leptospirosis	0	1	0	0	0	0	0	2	0	0	3
Mumps	1	0	1	1	3	1	3	2	3	3	18
Plague	0	0	0	0	0	2	0	0	0	0	2
Q fever	2	0	1	2	0	3	1	12	2	2	25
Relapsing Fever	0	0	1	0	0	2	0	0	1	1	5
Taeniasis	1	4	40	1	3	2	1	2	1	1	56
Tularemia	1	1	1	2	3	0	1	2	2	1	14
Zika	0	0	0	0	0	0	0	6	0	13	19
Total	7	8	51	9	13	15	12	42	15	24	196

For a breakdown of Chlamydia, Gonorrhea, HIV, or Early Syphilis in Oregon by county and quarter of report in 2012 please visit

Chlamydia, Gonorrhea, or Early Syphilis

<http://public.health.oregon.gov/DISEASES/CONDITIONS/COMMUNICABLEDISEASE/DISEASESURVEILLANCE/STDPAGES/index.aspx#countyquarter>

HIV

<http://public.health.oregon.gov/DiseasesConditions/CommunicableDisease/DiseaseSurveillanceData/HIVData/Pages/epiprofile.aspx>

Oregon Campylobacter Cases
January - June

	Age Group in Years												Total
	00-04	05-09	10-14	15-19	20-24	25-29	30-39	40-49	50-59	60-69	70-79	80+	
2005	29	18	13	18	18	19	51	47	52	27	15	9	316
2006	37	14	11	16	33	16	33	51	46	28	14	6	305
2007	39	18	9	16	32	15	43	50	59	25	22	12	340
2008	42	15	12	15	17	19	37	52	55	32	6	4	306
2009	43	12	7	10	25	25	56	54	54	42	23	14	365
2010	60	17	8	16	21	39	41	48	46	39	25	12	372
2011	49	20	17	18	24	30	58	50	70	55	21	18	430
2012	32	7	11	14	26	24	63	61	60	67	23	12	400
2013	32	16	10	14	20	34	62	43	62	45	22	13	373
2014	54	40	16	38	34	46	86	100	110	110	42	14	690
2015	43	25	18	10	27	39	73	56	55	62	34	12	454
2016	34	17	14	14	28	33	72	43	68	60	27	10	420
Total	494	219	146	199	305	339	675	655	737	592	274	136	4771

	2005	2006	2007	2008	2009	2010	2011	2012	2013	2014	2015	2016	Total
Baker	0	3	1	2	2	2	3	1	1	2	1	3	21
Benton	8	13	15	8	13	21	7	5	13	18	10	10	141
Clackamas	31	29	45	28	33	26	52	36	37	60	54	48	479
Clatsop	2	1	8	1	1	3	4	5	2	6	3	5	41
Columbia	2	5	0	2	1	2	3	2	8	6	4	3	38
Coos	3	3	5	6	7	5	12	12	6	14	6	4	83
Crook	1	1	1	4	4	4	3	3	5	8	3	1	38
Curry	2	0	2	5	6	4	4	1	4	0	0	1	29
Deschutes	13	14	21	17	13	30	23	24	21	40	23	26	265
Douglas	8	6	8	9	4	7	10	8	9	20	5	4	98
Gilliam	0	0	0	0	0	0	2	0	0	2	1	0	5
Grant	0	0	0	3	1	0	2	1	0	4	2	1	14
Harney	2	3	3	3	3	1	3	0	2	2	1	3	26
Hood River	1	1	0	0	2	1	1	3	4	4	2	2	21
Jackson	15	11	15	17	16	12	21	22	12	28	33	26	228
Jefferson	2	3	2	2	4	0	2	2	1	14	6	3	41
Josephine	4	8	2	0	4	6	7	3	1	8	7	9	59
Klamath	13	9	3	4	7	5	11	9	11	10	5	3	90
Lake	2	1	1	1	3	3	2	0	2	2	2	2	21
Lane	32	25	30	39	35	38	32	32	32	74	37	54	460
Lincoln	4	3	1	1	1	4	4	5	4	14	1	3	45
Linn	13	12	11	14	18	12	16	22	15	14	15	20	182
Malheur	4	6	3	3	3	2	6	3	1	22	6	6	65
Marion	26	13	33	20	24	27	25	35	20	44	22	27	316
Morrow	1	0	0	1	3	0	3	0	0	2	0	0	10
Multnomah	61	59	67	54	88	83	84	81	99	156	114	80	1026
Polk	4	2	4	5	6	6	3	10	7	2	7	4	60
Sherman	0	0	0	0	0	0	0	0	0	0	0	0	0
Tillamook	4	1	1	4	2	0	2	0	1	4	2	4	25
Umatilla	6	6	4	4	4	6	5	4	6	10	3	9	67
Union	2	6	4	5	2	2	3	5	0	6	2	4	41
Wallowa	0	0	0	0	0	2	0	2	3	0	1	0	8
Wasco	1	2	1	3	3	2	1	4	0	0	1	2	20
Washington	36	54	42	39	48	48	60	50	38	80	65	48	608
Wheeler	0	0	0	0	0	0	0	0	0	2	0	0	2
Yamhill	13	5	7	2	6	9	16	10	8	12	10	5	103
Total	316	305	340	306	367	373	432	400	373	690	454	420	4776

	Sex			Total
	F	M	U	
2005	151	164	1	316
2006	150	155	0	305
2007	154	183	3	340
2008	140	166	0	306
2009	170	197	0	367
2010	159	214	0	373
2011	198	234	0	432
2012	196	204	0	400
2013	174	199	0	373
2014	290	396	4	690
2015	211	243	0	454
2016	198	221	1	420
Total	2191	2576	9	4776

	Race					Total
	A	B	N	W	U	
2005	2	1	4	163	146	316
2006	4	2	1	147	151	305
2007	3	1	0	145	191	340
2008	1	4	4	151	146	306
2009	4	2	1	158	202	367
2010	2	6	3	196	166	373
2011	4	2	0	211	215	432
2012	4	1	1	227	167	400
2013	3	2	2	228	138	373
2014	8	4	2	490	186	690
2015	8	4	2	378	62	454
2016	8	5	10	341	56	420
Total	51	34	30	2835	1826	4776

Oregon Carbapenem-resistant Cases
January - June

	Age Group in Years												Total
	00-04	05-09	10-14	15-19	20-24	25-29	30-39	40-49	50-59	60-69	70-79	80+	
2007	0	0	0	0	0	0	0	0	0	0	0	0	0
2008	0	0	0	0	0	0	0	0	0	0	0	0	0
2009	0	0	0	0	0	0	0	0	0	0	0	0	0
2010	0	0	0	0	0	0	0	0	0	0	0	0	0
2011	0	0	0	0	0	0	0	0	0	0	0	0	0
2012	0	1	0	0	0	0	3	0	2	3	4	4	17
2013	0	0	0	0	0	0	1	3	6	10	6	10	36
2014	0	0	0	0	0	0	0	4	6	8	8	24	50
2015	1	0	0	0	0	1	0	0	5	6	4	4	21
2016	3	1	1	1	0	2	0	2	11	20	21	25	87
Total	4	2	1	1	0	3	4	9	30	47	43	67	211

	2007	2008	2009	2010	2011	2012	2013	2014	2015	2016	Total
Baker	0	0	0	0	0	0	0	0	0	0	0
Benton	0	0	0	0	0	0	0	2	0	2	4
Clackamas	0	0	0	0	0	2	2	8	1	12	25
Clatsop	0	0	0	0	0	0	0	2	0	1	3
Columbia	0	0	0	0	0	1	2	0	0	2	5
Coos	0	0	0	0	0	1	1	2	0	2	6
Crook	0	0	0	0	0	0	0	0	0	0	0
Curry	0	0	0	0	0	0	0	0	0	0	0
Deschutes	0	0	0	0	0	0	1	0	1	10	12
Douglas	0	0	0	0	0	2	1	0	1	3	7
Gilliam	0	0	0	0	0	0	0	0	0	0	0
Grant	0	0	0	0	0	0	0	0	0	0	0
Harney	0	0	0	0	0	0	0	0	0	0	0
Hood River	0	0	0	0	0	0	0	0	0	0	0
Jackson	0	0	0	0	0	1	1	0	1	3	6
Jefferson	0	0	0	0	0	0	0	0	0	1	1
Josephine	0	0	0	0	0	0	2	0	1	0	3
Klamath	0	0	0	0	0	0	0	2	0	4	6
Lake	0	0	0	0	0	0	0	0	0	0	0
Lane	0	0	0	0	0	1	4	2	0	3	10
Lincoln	0	0	0	0	0	0	0	0	2	1	3
Linn	0	0	0	0	0	0	2	4	5	4	15
Malheur	0	0	0	0	0	0	0	0	0	0	0
Marion	0	0	0	0	0	3	5	2	1	6	17
Morrow	0	0	0	0	0	0	0	0	0	0	0
Multnomah	0	0	0	0	0	4	10	14	4	15	47
Polk	0	0	0	0	0	0	0	2	1	2	5
Sherman	0	0	0	0	0	0	0	0	0	0	0
Tillamook	0	0	0	0	0	0	0	2	0	1	3
Umatilla	0	0	0	0	0	0	0	2	1	4	7
Union	0	0	0	0	0	0	0	0	0	0	0
Wallowa	0	0	0	0	0	0	0	0	0	0	0
Wasco	0	0	0	0	0	0	2	0	0	0	2
Washington	0	0	0	0	0	2	3	6	2	8	21
Wheeler	0	0	0	0	0	0	0	0	0	0	0
Yamhill	0	0	0	0	0	0	0	0	0	3	3
Total	0	0	0	0	0	17	36	50	21	87	211

	Sex			Total
	F	M	U	
2007	0	0	0	0
2008	0	0	0	0
2009	0	0	0	0
2010	0	0	0	0
2011	0	0	0	0
2012	10	7	0	17
2013	20	16	0	36
2014	30	20	0	50
2015	12	9	0	21
2016	55	32	0	87
Total	127	84	0	211

	Race					Total
	A	B	N	W	U	
2007	0	0	0	0	0	0
2008	0	0	0	0	0	0
2009	0	0	0	0	0	0
2010	0	0	0	0	0	0
2011	0	0	0	0	0	0
2012	0	2	2	9	4	17
2013	0	0	1	25	10	36
2014	2	0	0	34	14	50
2015	0	0	1	20	0	21
2016	0	1	2	60	24	87
Total	2	3	6	148	52	211

Oregon Cryptococcosis Cases
January - June

	Age Group in Years												Total
	00-04	05-09	10-14	15-19	20-24	25-29	30-39	40-49	50-59	60-69	70-79	80+	
2005	0	0	0	0	0	0	0	0	0	1	0	0	1
2006	0	0	0	0	0	0	0	0	1	0	0	0	1
2007	0	0	0	0	0	0	0	0	0	0	0	0	0
2008	0	0	0	0	0	0	0	1	2	1	0	0	4
2009	0	0	0	1	0	0	0	0	3	2	1	1	8
2010	0	1	0	0	1	0	2	4	2	3	0	1	14
2011	1	0	0	0	0	0	3	1	0	6	4	1	16
2012	0	0	1	1	0	0	1	4	3	5	2	1	18
2013	0	0	0	0	0	1	7	6	6	3	4	3	30
2014	2	0	2	0	0	0	2	12	14	12	10	6	60
2015	1	0	0	0	1	0	4	3	8	9	8	6	40
2016	0	0	0	0	2	1	1	5	3	7	4	0	23
Total	4	1	3	2	4	2	20	36	42	49	33	19	215

	2005	2006	2007	2008	2009	2010	2011	2012	2013	2014	2015	2016	Total
Baker	0	0	0	0	0	0	0	0	0	0	0	0	0
Benton	0	0	0	0	1	2	2	2	1	2	0	1	11
Clackamas	1	1	0	0	3	3	2	2	2	6	0	2	22
Clatsop	0	0	0	0	0	0	0	0	1	0	0	0	1
Columbia	0	0	0	1	0	0	0	0	0	2	0	0	3
Coos	0	0	0	0	0	0	0	0	0	0	1	0	1
Crook	0	0	0	0	0	0	0	0	0	0	0	1	1
Curry	0	0	0	0	0	0	0	0	0	0	0	0	0
Deschutes	0	0	0	0	0	0	1	0	0	2	8	6	17
Douglas	0	0	0	0	0	1	1	0	0	0	0	0	2
Gilliam	0	0	0	0	0	0	0	0	0	0	0	0	0
Grant	0	0	0	0	0	0	0	0	0	0	0	0	0
Harney	0	0	0	0	0	0	0	0	0	0	0	0	0
Hood River	0	0	0	0	0	0	0	0	1	0	0	0	1
Jackson	0	0	0	0	0	0	0	0	0	0	2	1	3
Jefferson	0	0	0	0	0	0	0	0	0	0	0	0	0
Josephine	0	0	0	0	0	0	0	0	0	0	1	0	1
Klamath	0	0	0	0	0	0	0	0	0	0	0	0	0
Lake	0	0	0	0	0	0	0	0	0	0	0	0	0
Lane	0	0	0	1	0	1	2	1	2	8	7	2	24
Lincoln	0	0	0	0	0	0	0	0	0	0	2	0	2
Linn	0	0	0	1	0	0	0	0	1	0	0	0	2
Malheur	0	0	0	0	0	0	0	0	0	0	0	0	0
Marion	0	0	0	0	3	1	1	4	6	6	5	1	27
Morrow	0	0	0	0	0	0	0	0	0	0	0	0	0
Multnomah	0	0	0	1	0	3	4	4	6	18	8	2	46
Polk	0	0	0	0	1	0	1	0	2	2	0	0	6
Sherman	0	0	0	0	0	0	0	0	0	0	0	0	0
Tillamook	0	0	0	0	0	0	1	0	0	0	1	0	2
Umatilla	0	0	0	0	0	0	0	0	1	2	0	0	3
Union	0	0	0	0	0	0	0	0	0	0	0	0	0
Wallowa	0	0	0	0	0	0	0	0	0	0	0	0	0
Wasco	0	0	0	0	0	0	0	0	1	0	0	0	1
Washington	0	0	0	0	0	3	1	5	4	6	3	6	28
Wheeler	0	0	0	0	0	0	0	0	0	0	0	0	0
Yamhill	0	0	0	0	0	0	0	0	2	6	2	1	11
Total	1	1	0	4	8	14	16	18	30	60	40	23	215

	Sex			Total
	F	M	U	
2005	0	1	0	1
2006	1	0	0	1
2007	0	0	0	0
2008	2	2	0	4
2009	1	7	0	8
2010	11	3	0	14
2011	6	10	0	16
2012	5	13	0	18
2013	13	17	0	30
2014	22	38	0	60
2015	14	26	0	40
2016	8	15	0	23
Total	83	132	0	215

	Race					Total
	A	B	N	W	U	
2005	0	0	0	1	0	1
2006	0	0	0	0	1	1
2007	0	0	0	0	0	0
2008	0	0	0	4	0	4
2009	0	0	0	6	2	8
2010	0	0	0	9	5	14
2011	0	0	0	13	3	16
2012	1	1	0	10	6	18
2013	4	0	0	21	5	30
2014	2	2	0	46	10	60
2015	0	0	1	36	3	40
2016	1	0	1	15	6	23
Total	8	3	2	161	41	215

Oregon Cryptosporidiosis Cases
January - June

	Age Group in Years												Total
	00-04	05-09	10-14	15-19	20-24	25-29	30-39	40-49	50-59	60-69	70-79	80+	
2005	3	0	1	0	2	6	4	4	3	0	1	0	24
2006	2	5	4	0	3	7	4	4	6	0	0	2	37
2007	1	2	0	3	3	6	8	6	5	1	5	1	41
2008	10	1	2	2	2	5	5	3	4	5	1	0	40
2009	5	1	4	3	7	8	19	17	13	10	10	6	103
2010	4	1	0	2	10	5	11	11	15	9	4	3	75
2011	9	2	4	7	11	9	17	11	14	13	12	3	112
2012	2	6	3	6	7	11	18	11	15	13	8	1	101
2013	4	1	1	3	6	5	7	10	12	5	2	2	58
2014	16	4	2	12	10	14	16	14	10	6	6	2	112
2015	5	4	4	6	6	5	8	9	12	9	4	1	73
2016	15	7	5	6	3	8	34	17	12	14	10	3	134
Total	76	34	30	50	70	89	151	117	121	85	63	24	910

	2005	2006	2007	2008	2009	2010	2011	2012	2013	2014	2015	2016	Total
Baker	0	0	0	0	0	0	0	0	1	0	1	0	2
Benton	0	0	0	1	0	1	10	1	2	2	5	4	26
Clackamas	4	2	3	10	26	11	11	14	4	10	10	12	117
Clatsop	0	0	0	0	2	1	4	1	1	0	0	2	11
Columbia	0	0	1	0	5	2	1	2	1	2	1	1	16
Coos	0	0	0	0	0	1	0	1	0	2	0	0	4
Crook	0	9	0	0	0	0	1	0	0	0	0	4	14
Curry	0	0	0	0	2	0	0	0	1	0	0	0	3
Deschutes	0	0	1	1	1	0	0	0	0	0	1	4	8
Douglas	0	1	0	1	4	2	1	7	7	8	4	5	40
Gilliam	0	0	0	0	0	0	0	0	0	0	0	0	0
Grant	0	0	0	0	0	0	1	0	0	0	0	0	1
Harney	0	0	0	2	0	0	0	0	1	0	1	0	4
Hood River	0	1	1	0	1	0	0	2	0	0	0	0	5
Jackson	3	6	8	6	19	4	2	4	2	12	4	8	78
Jefferson	0	0	0	0	0	0	0	0	0	0	0	0	0
Josephine	1	0	1	0	3	0	0	1	0	0	0	0	6
Klamath	0	3	1	0	0	1	1	1	1	0	0	5	13
Lake	0	1	0	0	0	0	0	0	0	0	0	0	1
Lane	3	1	3	1	7	5	8	3	3	2	4	15	55
Lincoln	0	0	0	0	1	1	3	2	1	0	1	2	11
Linn	0	0	0	0	0	3	7	4	2	8	4	8	36
Malheur	1	0	1	0	0	0	0	1	0	0	0	0	3
Marion	2	1	0	0	2	7	6	3	3	8	8	9	49
Morrow	1	0	1	0	0	0	1	0	0	0	1	0	4
Multnomah	8	11	16	10	16	23	33	27	16	22	12	32	226
Polk	0	0	0	0	0	0	0	0	0	2	0	0	2
Sherman	0	0	0	0	0	0	0	0	1	0	0	1	2
Tillamook	0	1	2	4	1	0	2	6	2	6	6	3	33
Umatilla	0	0	0	0	0	0	0	1	0	0	0	0	1
Union	0	0	0	0	1	0	1	0	1	0	0	1	4
Wallowa	0	0	0	0	0	0	0	0	0	2	0	0	2
Wasco	0	0	0	0	0	1	0	0	0	0	0	0	1
Washington	1	1	2	4	11	11	17	20	8	24	8	17	124
Wheeler	0	0	0	0	0	0	0	0	0	0	0	1	1
Yamhill	0	0	0	0	2	1	2	0	0	2	2	0	9
Total	24	38	41	40	104	75	112	101	58	112	73	134	912

	Sex			Total
	F	M	U	
2005	14	10	0	24
2006	22	16	0	38
2007	27	14	0	41
2008	18	22	0	40
2009	59	44	1	104
2010	44	31	0	75
2011	71	41	0	112
2012	61	40	0	101
2013	39	19	0	58
2014	62	50	0	112
2015	38	35	0	73
2016	76	58	0	134
Total	531	380	1	912

	Race					Total
	A	B	N	W	U	
2005	0	0	0	17	7	24
2006	0	0	0	26	12	38
2007	0	0	1	18	22	41
2008	0	2	0	33	5	40
2009	1	1	0	89	13	104
2010	2	3	1	63	6	75
2011	1	0	2	96	13	112
2012	4	0	1	90	6	101
2013	1	1	0	53	3	58
2014	16	0	2	92	2	112
2015	1	1	0	63	8	73
2016	1	1	1	117	14	134
Total	27	9	8	757	111	912

Oregon E. coli(STEC) Cases
January - June

	Age Group in Years												Total
	00-04	05-09	10-14	15-19	20-24	25-29	30-39	40-49	50-59	60-69	70-79	80+	
2005	6	1	16	1	1	0	3	2	3	0	0	0	33
2006	2	6	2	2	1	2	4	2	3	2	0	3	29
2007	3	0	0	1	1	1	1	3	4	1	1	3	19
2008	5	1	1	5	1	0	0	0	2	0	2	0	17
2009	5	2	0	1	0	1	0	1	2	1	0	1	14
2010	6	2	3	4	1	2	2	2	0	3	4	1	30
2011	12	0	6	5	0	2	0	1	1	1	0	1	29
2012	24	6	12	4	3	4	7	3	6	3	1	3	76
2013	5	7	4	10	5	2	8	3	0	1	2	0	47
2014	24	12	16	8	12	4	8	12	6	2	4	2	110
2015	25	10	10	5	3	5	8	6	5	6	0	0	83
2016	11	2	14	6	8	1	7	5	4	4	3	1	66
Total	128	49	84	52	36	24	48	40	36	24	17	15	553

	2005	2006	2007	2008	2009	2010	2011	2012	2013	2014	2015	2016	Total
Baker	0	0	0	0	0	0	1	0	0	0	0	0	1
Benton	3	1	3	0	0	0	1	1	3	0	1	1	14
Clackamas	5	5	0	0	1	3	3	10	4	12	6	2	51
Clatsop	0	0	1	0	0	0	0	1	0	0	0	0	2
Columbia	0	0	0	0	0	0	0	0	0	0	3	1	4
Coos	0	0	1	0	0	0	0	0	1	0	0	0	2
Crook	1	1	0	0	0	1	0	0	0	0	5	1	9
Curry	0	0	0	0	0	0	0	0	0	0	0	0	0
Deschutes	0	2	1	0	0	1	1	4	2	14	9	10	44
Douglas	1	0	0	2	4	1	3	7	0	4	0	0	22
Gilliam	0	0	0	0	0	0	0	0	0	0	0	0	0
Grant	0	0	0	0	1	0	1	0	0	2	1	0	5
Harney	1	0	0	0	0	0	0	1	0	2	0	0	4
Hood River	0	0	0	0	0	0	0	0	0	2	0	0	2
Jackson	1	1	1	0	1	4	3	2	0	8	9	1	31
Jefferson	0	0	0	0	0	0	0	1	0	0	0	0	1
Josephine	0	0	0	0	0	0	0	0	1	0	0	1	2
Klamath	0	0	0	0	0	0	0	4	3	6	3	5	21
Lake	0	0	0	1	0	0	0	3	0	0	0	1	5
Lane	7	2	0	0	0	1	1	4	3	6	6	12	42
Lincoln	0	0	1	1	0	0	0	0	0	0	0	0	2
Linn	2	0	2	1	0	3	2	4	2	4	4	2	26
Malheur	0	0	0	0	0	0	2	0	1	0	0	0	3
Marion	3	5	0	5	0	3	2	13	9	12	10	2	64
Morrow	0	0	2	0	0	0	0	0	0	0	0	0	2
Multnomah	5	5	5	3	1	6	6	6	9	8	5	14	73
Polk	1	0	1	1	2	0	0	0	1	2	3	0	11
Sherman	0	0	0	0	0	0	0	0	0	0	0	0	0
Tillamook	0	0	0	0	0	0	0	1	0	6	0	1	8
Umatilla	0	3	0	1	0	0	1	1	0	4	1	0	11
Union	0	0	0	0	0	0	0	0	1	0	3	0	4
Wallowa	0	0	0	0	0	0	0	1	0	0	1	0	2
Wasco	0	0	0	0	0	2	0	0	0	0	0	0	2
Washington	3	3	1	1	2	5	1	9	6	12	9	11	63
Wheeler	0	0	0	0	0	0	0	0	0	0	0	0	0
Yamhill	0	1	0	1	2	0	1	3	1	6	4	1	20
Total	33	29	19	17	14	30	29	76	47	110	83	66	553

	Sex			Total
	F	M	U	
2005	17	16	0	33
2006	15	14	0	29
2007	10	9	0	19
2008	7	10	0	17
2009	9	5	0	14
2010	12	18	0	30
2011	14	15	0	29
2012	34	42	0	76
2013	28	19	0	47
2014	60	50	0	110
2015	44	39	0	83
2016	40	26	0	66
Total	290	263	0	553

	Race					Total
	A	B	N	W	U	
2005	3	0	0	29	1	33
2006	1	0	0	27	1	29
2007	0	1	0	16	2	19
2008	2	0	0	15	0	17
2009	1	0	0	12	1	14
2010	0	0	0	29	1	30
2011	0	0	0	26	3	29
2012	0	0	3	64	9	76
2013	0	1	0	44	2	47
2014	2	0	0	94	14	110
2015	0	0	2	71	10	83
2016	1	0	1	58	6	66
Total	10	2	6	485	50	553

Oregon Giardiasis Cases
January - June

	Age Group in Years												Total
	00-04	05-09	10-14	15-19	20-24	25-29	30-39	40-49	50-59	60-69	70-79	80+	
2005	36	17	3	6	5	9	19	24	25	8	3	3	158
2006	33	15	4	6	11	13	33	25	19	15	6	1	181
2007	37	12	3	6	17	6	19	26	25	17	9	4	181
2008	39	15	12	7	12	12	34	23	31	21	4	2	212
2009	24	23	13	6	11	14	19	16	17	19	3	1	166
2010	54	18	9	9	10	13	31	30	27	22	7	5	235
2011	36	15	12	10	12	14	20	30	26	15	3	3	196
2012	19	9	7	14	14	9	25	20	21	15	9	3	165
2013	19	16	6	2	9	12	20	19	17	13	3	1	137
2014	27	36	24	16	20	34	35	36	42	18	10	2	300
2015	11	15	11	11	10	13	22	27	19	20	2	5	166
2016	10	4	3	7	10	13	20	22	23	19	12	4	147
Total	345	195	107	100	141	162	297	298	292	202	71	34	2244

	2005	2006	2007	2008	2009	2010	2011	2012	2013	2014	2015	2016	Total
Baker	2	3	0	0	0	0	0	0	0	0	0	0	5
Benton	4	4	5	10	4	5	8	7	3	2	1	3	56
Clackamas	15	17	13	13	14	15	14	7	17	12	19	10	166
Clatsop	5	2	2	1	0	1	1	1	1	2	3	3	22
Columbia	1	0	0	2	4	2	1	1	2	0	1	0	14
Coos	2	2	5	3	3	7	3	1	0	4	0	1	31
Crook	0	0	0	1	0	0	0	0	0	0	0	0	1
Curry	0	1	0	1	0	1	1	1	1	0	0	0	6
Deschutes	6	15	13	22	6	24	9	11	5	16	8	19	154
Douglas	12	7	3	9	4	3	3	5	4	6	4	4	64
Gilliam	0	0	0	0	0	0	1	0	0	0	0	0	1
Grant	0	0	0	0	0	1	0	0	0	0	0	0	1
Harney	0	1	0	0	0	0	1	0	0	2	0	0	4
Hood River	0	2	1	1	2	0	0	0	0	0	2	0	8
Jackson	4	15	6	7	10	9	9	4	5	22	2	3	96
Jefferson	0	1	0	1	1	1	1	0	1	4	3	0	13
Josephine	4	2	3	3	3	3	3	2	3	4	0	1	31
Klamath	1	3	4	4	0	3	5	2	0	0	0	1	23
Lake	0	0	0	0	1	0	0	1	0	0	0	0	2
Lane	11	21	31	23	16	20	17	17	12	18	7	11	204
Lincoln	0	3	3	0	2	6	1	2	0	4	1	1	23
Linn	3	3	6	6	4	4	2	8	2	2	2	1	43
Malheur	0	0	1	1	0	1	1	0	1	2	1	1	9
Marion	11	8	8	7	3	9	11	11	3	10	6	8	95
Morrow	0	0	1	0	0	1	0	0	0	2	0	0	4
Multnomah	43	44	48	62	63	79	65	57	52	129	77	50	769
Polk	1	0	6	4	3	5	3	1	1	6	4	2	36
Sherman	0	0	0	0	0	0	0	0	0	0	0	0	0
Tillamook	4	0	1	4	1	0	1	0	1	0	2	0	14
Umatilla	3	0	0	3	1	7	3	6	0	10	2	0	35
Union	0	0	0	1	3	2	1	0	0	0	1	2	10
Wallowa	0	0	1	0	1	0	0	0	0	0	0	1	3
Wasco	0	2	1	0	2	1	4	1	0	0	0	1	12
Washington	25	27	18	23	10	23	22	15	20	39	19	22	263
Wheeler	0	0	0	0	0	0	0	0	0	0	0	0	0
Yamhill	2	1	2	0	5	4	5	4	3	4	1	2	33
Total	159	184	182	212	166	237	196	165	137	300	166	147	2251

	Sex			Total
	F	M	U	
2005	78	80	1	159
2006	90	91	3	184
2007	82	98	2	182
2008	92	119	1	212
2009	72	92	2	166
2010	109	127	1	237
2011	82	113	1	196
2012	65	100	0	165
2013	63	74	0	137
2014	130	170	0	300
2015	73	93	0	166
2016	65	81	1	147
Total	1001	1238	12	2251

	Race					Total
	A	B	N	W	U	
2005	6	1	1	77	74	159
2006	2	7	0	93	82	184
2007	11	8	3	87	73	182
2008	9	16	0	89	98	212
2009	6	7	2	63	88	166
2010	3	29	1	91	113	237
2011	1	22	1	71	101	196
2012	2	9	5	64	85	165
2013	4	13	2	46	72	137
2014	6	14	6	118	156	300
2015	2	23	2	87	52	166
2016	2	9	0	82	54	147
Total	54	158	23	968	1048	2251

Oregon Haemophilus influenzae Cases
January - June

	Age Group in Years												Total
	00-04	05-09	10-14	15-19	20-24	25-29	30-39	40-49	50-59	60-69	70-79	80+	
2005	4	1	0	1	1	0	1	1	6	4	6	6	31
2006	2	1	0	0	1	0	0	3	2	2	2	9	22
2007	6	0	0	0	2	0	2	2	2	9	6	11	40
2008	2	1	1	0	0	0	2	3	5	8	2	8	32
2009	3	0	0	0	1	1	0	1	5	6	5	7	29
2010	2	2	1	1	0	0	0	4	7	7	4	9	37
2011	2	0	0	1	0	1	2	1	7	13	9	10	46
2012	3	2	1	0	0	0	1	2	14	7	7	5	42
2013	7	1	0	1	1	0	2	5	7	13	10	13	60
2014	12	0	0	0	0	2	4	0	8	16	26	26	94
2015	4	1	0	0	0	0	1	5	10	9	18	19	67
2016	3	0	1	0	3	0	6	2	7	12	11	7	52
Total	50	9	4	4	9	4	21	29	80	106	106	130	552

	2005	2006	2007	2008	2009	2010	2011	2012	2013	2014	2015	2016	Total
Baker	0	0	0	0	0	0	0	0	0	0	0	1	1
Benton	0	1	2	0	1	0	1	0	2	2	1	2	12
Clackamas	2	3	7	2	1	2	6	1	3	4	10	7	48
Clatsop	0	0	0	0	0	2	0	0	2	2	0	1	7
Columbia	0	0	1	0	1	1	1	0	0	4	0	1	9
Coos	2	1	2	2	1	1	1	0	1	0	1	0	12
Crook	1	0	0	1	0	0	0	0	1	0	0	0	3
Curry	0	0	0	0	0	0	0	1	0	2	0	0	3
Deschutes	1	0	2	3	1	1	1	1	5	2	1	4	22
Douglas	0	0	0	1	0	1	1	1	1	2	2	0	9
Gilliam	0	0	0	0	0	0	0	0	0	0	0	1	1
Grant	0	0	0	0	0	0	0	0	1	0	0	0	1
Harney	0	0	0	0	0	0	0	0	0	0	0	1	1
Hood River	0	0	0	0	0	0	0	0	0	0	0	0	0
Jackson	3	3	5	2	0	2	2	4	7	6	3	2	39
Jefferson	1	0	0	0	0	0	0	1	0	2	0	0	4
Josephine	1	3	2	4	4	2	6	1	1	0	6	5	35
Klamath	0	0	2	0	0	0	2	1	1	4	1	1	12
Lake	0	0	0	0	0	0	0	0	0	0	1	0	1
Lane	2	5	7	4	4	5	4	5	9	12	9	4	70
Lincoln	0	0	0	0	1	0	1	1	2	2	0	0	7
Linn	1	0	0	4	0	1	1	1	3	0	3	2	16
Malheur	0	0	0	0	0	0	0	0	2	0	0	0	2
Marion	6	2	0	2	3	2	3	8	4	10	5	2	47
Morrow	0	0	0	0	0	1	0	0	0	2	0	0	3
Multnomah	7	3	4	4	8	6	13	9	9	26	14	9	112
Polk	0	0	0	0	0	2	1	0	1	2	1	0	7
Sherman	0	0	0	0	0	0	0	0	0	0	0	0	0
Tillamook	0	0	0	0	0	1	0	0	0	0	0	0	1
Umatilla	0	0	1	0	0	0	0	2	1	0	1	0	5
Union	0	0	1	0	0	0	0	1	0	0	0	1	3
Wallowa	0	0	0	0	0	0	0	0	0	0	0	0	0
Wasco	0	0	0	0	1	0	0	0	0	0	1	0	2
Washington	4	1	2	3	2	5	2	3	3	10	4	7	46
Wheeler	0	0	0	0	0	0	0	0	0	0	0	0	0
Yamhill	0	0	2	0	1	2	0	1	1	0	3	1	11
Total	31	22	40	32	29	37	46	42	60	94	67	52	552

	Sex			Total
	F	M	U	
2005	20	11	0	31
2006	14	8	0	22
2007	19	20	1	40
2008	19	13	0	32
2009	8	21	0	29
2010	20	17	0	37
2011	24	22	0	46
2012	21	21	0	42
2013	35	25	0	60
2014	32	62	0	94
2015	36	31	0	67
2016	29	23	0	52
Total	277	274	1	552

	Race					Total
	A	B	N	W	U	
2005	1	1	0	23	6	31
2006	1	0	0	15	6	22
2007	0	0	0	33	7	40
2008	1	0	1	24	6	32
2009	0	1	0	19	9	29
2010	0	0	0	31	6	37
2011	1	0	0	34	11	46
2012	0	0	0	30	12	42
2013	0	0	0	49	11	60
2014	0	2	0	82	10	94
2015	1	3	0	59	4	67
2016	0	0	1	46	5	52
Total	5	7	2	445	93	552

Oregon Hepatitis A (acute) Cases
January - June

	Age Group in Years												Total
	00-04	05-09	10-14	15-19	20-24	25-29	30-39	40-49	50-59	60-69	70-79	80+	
2005	1	0	0	3	4	1	1	2	2	1	2	4	21
2006	2	2	1	2	3	0	1	4	3	5	2	0	25
2007	0	0	0	0	3	3	2	2	0	1	1	2	14
2008	3	0	0	1	3	1	4	6	2	0	0	1	21
2009	0	1	1	0	0	1	1	0	4	1	0	1	10
2010	0	0	0	0	1	0	2	1	1	2	2	1	10
2011	0	0	0	0	0	1	0	1	0	0	2	0	4
2012	0	0	0	0	0	0	0	1	0	0	0	0	1
2013	0	0	1	0	0	0	1	0	4	3	1	0	10
2014	2	0	2	0	2	2	0	0	0	2	4	0	14
2015	0	0	0	1	2	1	3	5	2	1	0	1	16
2016	0	0	0	1	1	1	0	2	4	1	1	0	11
Total	8	3	5	8	19	11	15	24	22	17	15	10	157

	2005	2006	2007	2008	2009	2010	2011	2012	2013	2014	2015	2016	Total
Baker	0	0	0	0	0	0	0	0	1	0	0	0	1
Benton	1	1	0	0	1	0	0	0	0	0	1	0	4
Clackamas	1	1	0	1	0	3	1	0	1	2	5	4	19
Clatsop	0	1	0	0	0	0	0	0	0	0	0	0	1
Columbia	0	0	0	1	0	0	0	0	0	0	1	0	2
Coos	0	0	0	0	0	0	0	0	0	0	0	1	1
Crook	0	0	0	0	0	0	0	0	0	0	0	0	0
Curry	0	0	0	0	0	0	0	0	0	0	0	0	0
Deschutes	0	1	1	1	0	2	0	0	0	2	0	0	7
Douglas	2	0	0	1	0	0	0	0	0	0	1	0	4
Gilliam	0	0	0	0	0	0	0	0	0	0	0	0	0
Grant	0	0	0	0	0	0	0	0	0	0	0	0	0
Harney	0	0	0	0	0	0	0	0	0	0	0	0	0
Hood River	0	1	0	2	0	0	2	0	0	0	0	2	7
Jackson	0	0	1	0	0	1	0	0	2	0	0	0	4
Jefferson	0	0	0	0	0	0	0	0	0	0	1	0	1
Josephine	1	0	1	1	0	0	0	0	0	0	0	0	3
Klamath	0	0	2	0	1	0	0	1	0	0	0	0	4
Lake	0	0	0	0	0	0	0	0	0	0	0	0	0
Lane	5	4	0	2	1	0	0	0	1	0	0	1	14
Lincoln	0	0	0	0	0	0	0	0	1	0	0	0	1
Linn	0	0	0	0	0	0	0	0	0	0	0	0	0
Malheur	0	0	0	0	0	0	0	0	0	0	0	1	1
Marion	0	3	0	1	1	0	0	0	2	0	1	0	8
Morrow	0	0	0	0	0	0	0	0	0	0	0	0	0
Multnomah	6	2	7	5	3	2	0	0	2	6	0	2	35
Polk	1	0	1	0	0	1	0	0	0	0	1	0	4
Sherman	0	0	0	0	0	0	0	0	0	0	0	0	0
Tillamook	0	6	0	0	0	0	0	0	0	2	0	0	8
Umatilla	1	0	0	0	0	0	0	0	0	0	0	0	1
Union	0	0	0	0	0	0	0	0	0	0	0	0	0
Wallowa	0	0	0	0	0	0	0	0	0	0	0	0	0
Wasco	0	0	0	0	0	0	0	0	0	0	0	0	0
Washington	2	5	1	5	3	1	1	0	0	2	5	0	25
Wheeler	0	0	0	0	0	0	0	0	0	0	0	0	0
Yamhill	1	0	0	1	0	0	0	0	0	0	0	0	2
Total	21	25	14	21	10	10	4	1	10	14	16	11	157

	Sex			Total
	F	M	U	
2005	9	12	0	21
2006	12	13	0	25
2007	7	7	0	14
2008	9	12	0	21
2009	2	8	0	10
2010	2	8	0	10
2011	3	1	0	4
2012	0	1	0	1
2013	7	3	0	10
2014	6	8	0	14
2015	7	9	0	16
2016	5	6	0	11
Total	69	88	0	157

	Race					Total
	A	B	N	W	U	
2005	0	0	0	19	2	21
2006	1	0	0	21	3	25
2007	1	0	0	11	2	14
2008	1	1	0	16	3	21
2009	0	0	0	10	0	10
2010	0	1	0	9	0	10
2011	1	0	0	3	0	4
2012	0	0	0	1	0	1
2013	0	0	0	10	0	10
2014	0	2	0	8	4	14
2015	1	0	0	14	1	16
2016	0	0	1	5	5	11
Total	5	4	1	127	20	157

Oregon Hepatitis B (acute) Cases
January - June

	Age Group in Years												Total
	00-04	05-09	10-14	15-19	20-24	25-29	30-39	40-49	50-59	60-69	70-79	80+	
2005	0	0	0	1	5	7	9	13	15	4	2	0	56
2006	0	0	0	0	5	3	9	13	4	2	0	0	36
2007	0	0	0	0	2	4	10	12	6	0	1	0	35
2008	0	0	0	0	1	2	7	12	6	2	0	0	30
2009	0	0	0	0	1	1	8	6	5	1	1	0	23
2010	0	0	0	0	1	1	3	10	8	2	0	0	25
2011	0	0	0	0	0	1	2	8	4	3	0	1	19
2012	0	0	0	0	0	0	1	5	3	1	2	0	12
2013	0	0	1	0	1	3	3	4	1	1	1	0	15
2014	0	0	0	0	0	2	12	4	14	4	2	0	38
2015	0	0	0	0	0	0	3	3	4	1	0	0	11
2016	0	0	0	0	0	4	5	3	0	1	0	0	13
Total	0	0	1	1	16	28	72	93	70	22	9	1	313

	Sex			Total
	F	M	U	
2005	25	31	0	56
2006	14	22	0	36
2007	14	21	0	35
2008	4	26	0	30
2009	8	15	0	23
2010	10	15	0	25
2011	4	15	0	19
2012	5	7	0	12
2013	4	11	0	15
2014	10	28	0	38
2015	6	5	0	11
2016	4	9	0	13
Total	108	205	0	313

	Race					Total
	A	B	N	W	U	
2005	4	2	3	40	7	56
2006	1	2	0	31	2	36
2007	1	0	0	30	4	35
2008	0	1	1	23	5	30
2009	0	0	0	23	0	23
2010	0	0	0	25	0	25
2011	0	0	0	18	1	19
2012	1	0	0	10	1	12
2013	1	1	1	10	2	15
2014	0	2	0	31	5	38
2015	0	0	0	10	1	11
2016	2	0	0	8	3	13
Total	10	8	5	259	31	313

	2005	2006	2007	2008	2009	2010	2011	2012	2013	2014	2015	2016	Total
Baker	0	0	0	0	0	0	0	0	0	0	0	0	0
Benton	0	0	2	0	0	0	0	0	0	0	0	0	2
Clackamas	8	2	2	5	3	3	2	1	1	2	0	1	30
Clatsop	0	1	0	0	0	0	1	0	0	2	0	0	4
Columbia	1	0	2	0	0	0	0	1	0	0	0	2	6
Coos	0	0	0	0	0	1	0	0	0	0	0	0	1
Crook	0	0	0	0	0	1	0	0	0	0	1	0	2
Curry	1	0	0	0	0	0	0	0	0	0	0	0	1
Deschutes	2	3	0	0	3	1	1	0	0	0	1	0	11
Douglas	1	2	3	1	1	0	0	0	0	0	0	0	8
Gilliam	0	0	0	0	0	0	0	0	0	0	0	0	0
Grant	0	0	0	0	0	0	0	0	0	0	0	0	0
Harney	0	0	0	0	0	0	0	0	0	0	0	0	0
Hood River	1	0	0	0	0	0	0	0	0	0	0	0	1
Jackson	3	3	0	5	1	1	1	0	2	4	0	1	21
Jefferson	0	0	0	0	0	0	0	0	0	0	0	0	0
Josephine	4	4	1	1	0	0	0	0	0	0	0	0	10
Klamath	0	0	0	1	0	0	0	0	0	0	0	0	1
Lake	0	0	0	0	0	0	0	0	0	0	0	0	0
Lane	7	5	5	4	3	2	2	2	0	6	0	2	38
Lincoln	1	1	0	1	0	0	0	0	0	0	0	0	3
Linn	3	2	2	3	0	1	1	0	0	0	1	0	13
Malheur	1	0	0	0	0	0	0	0	0	0	0	0	1
Marion	5	2	2	0	3	3	1	1	1	4	0	0	22
Morrow	0	0	0	0	0	0	0	0	0	0	0	0	0
Multnomah	7	8	10	4	6	5	4	2	6	16	6	1	75
Polk	2	0	0	0	0	1	1	0	0	0	0	0	4
Sherman	0	0	0	0	0	0	0	0	0	0	0	0	0
Tillamook	0	0	0	0	0	1	0	0	0	0	0	0	1
Umatilla	1	0	0	0	0	0	0	1	0	0	0	1	3
Union	0	1	0	0	0	0	0	1	0	0	0	0	2
Wallowa	0	0	0	0	0	0	0	0	0	0	0	0	0
Wasco	0	0	0	0	0	2	1	0	0	0	0	0	3
Washington	5	2	4	5	3	3	4	3	3	4	2	5	43
Wheeler	0	0	0	0	0	0	0	0	0	0	0	0	0
Yamhill	3	0	2	0	0	0	0	0	2	0	0	0	7
Total	56	36	35	30	23	25	19	12	15	38	11	13	313

Oregon Hepatitis B (chronic) Cases
January - June

	Age Group in Years												Total
	00-04	05-09	10-14	15-19	20-24	25-29	30-39	40-49	50-59	60-69	70-79	80+	
2005	1	2	2	7	17	24	53	47	28	7	6	5	199
2006	2	0	1	5	18	26	69	50	23	12	5	3	214
2007	5	3	1	11	23	24	59	44	30	16	6	0	222
2008	5	0	1	12	20	24	66	58	45	20	6	7	264
2009	4	0	1	4	13	17	61	49	38	21	6	3	217
2010	3	0	1	7	9	25	59	53	40	21	6	1	225
2011	1	3	2	3	20	22	52	52	47	19	4	0	225
2012	2	2	2	4	12	22	45	42	36	27	3	4	201
2013	1	0	0	5	23	25	55	49	33	24	12	2	229
2014	0	4	8	12	40	71	143	130	104	49	8	0	569
2015	1	1	1	2	9	31	59	43	55	28	11	3	244
2016	2	1	1	6	13	15	47	40	46	30	6	5	212
Total	27	16	21	78	217	326	768	657	525	274	79	33	3021

	Sex			Total
	F	M	U	
2005	87	113	2	202
2006	109	108	1	218
2007	109	114	0	223
2008	103	159	3	265
2009	88	128	1	217
2010	101	124	0	225
2011	95	130	0	225
2012	81	120	0	201
2013	98	131	0	229
2014	260	309	0	569
2015	97	146	1	244
2016	90	122	0	212
Total	1318	1704	8	3030

	Race					Total
	A	B	N	W	U	
2005	75	11	2	57	57	202
2006	96	17	2	68	35	218
2007	82	16	2	68	55	223
2008	114	12	7	82	50	265
2009	93	20	3	66	35	217
2010	93	15	7	50	60	225
2011	113	11	10	58	33	225
2012	90	8	10	54	39	201
2013	99	23	10	53	44	229
2014	289	56	10	109	105	569
2015	122	20	6	56	40	244
2016	98	11	8	51	44	212
Total	1364	220	77	772	597	3030

	2005	2006	2007	2008	2009	2010	2011	2012	2013	2014	2015	2016	Total
Baker	0	1	0	1	1	0	0	0	0	0	0	0	3
Benton	5	1	2	8	3	1	1	6	6	6	4	5	48
Clackamas	15	14	20	20	20	17	21	15	20	30	26	18	236
Clatsop	3	3	3	1	0	0	1	1	3	0	1	1	17
Columbia	2	2	1	0	1	2	1	0	3	3	2	1	18
Coos	1	3	3	2	1	2	2	2	2	0	6	1	25
Crook	0	0	2	0	1	0	0	0	0	0	0	1	4
Curry	0	1	0	1	2	0	0	0	0	6	0	1	11
Deschutes	3	1	5	4	5	3	5	2	4	7	1	2	42
Douglas	2	2	0	5	4	5	3	1	1	8	1	9	41
Gilliam	0	0	0	0	0	0	0	1	0	0	0	0	1
Grant	0	0	1	0	0	0	0	0	0	0	0	0	1
Harney	0	0	0	0	0	1	0	0	0	0	1	0	2
Hood River	1	0	0	0	0	0	0	1	2	0	1	2	7
Jackson	4	8	6	9	6	7	5	3	3	10	5	8	74
Jefferson	1	0	0	1	0	1	0	0	1	0	0	0	4
Josephine	2	7	5	3	2	2	1	3	3	4	1	0	33
Klamath	1	1	1	3	1	6	4	1	3	8	2	0	31
Lake	0	0	0	0	0	0	1	0	0	0	0	0	1
Lane	9	16	20	10	10	6	12	7	16	16	20	7	149
Lincoln	3	1	1	1	4	3	0	2	0	4	1	1	21
Linn	5	4	1	5	3	4	0	2	2	8	1	2	37
Malheur	4	1	3	4	2	1	2	4	1	0	0	0	22
Marion	17	16	11	13	11	14	14	11	13	34	7	8	169
Morrow	0	0	1	0	0	0	0	0	0	0	0	0	1
Multnomah	68	82	83	109	95	98	117	84	104	292	95	88	1315
Out Of Sta	0	0	0	0	0	0	0	0	0	1	0	0	1
Polk	3	8	0	6	2	4	0	2	3	8	5	1	42
Sherman	0	0	0	0	0	0	0	0	0	0	0	0	0
Tillamook	1	0	0	2	0	0	0	2	0	2	0	1	8
Umatilla	1	1	1	3	2	1	3	2	2	2	3	1	22
Union	0	1	2	1	0	0	0	3	0	0	1	1	9
Wallowa	0	0	0	0	0	1	0	0	0	0	0	0	1
Wasco	2	0	2	2	1	1	0	1	1	0	0	1	11
Washington	45	43	47	48	39	44	29	43	36	120	57	51	602
Wheeler	0	0	0	0	0	0	0	0	0	0	0	0	0
Yamhill	4	1	2	3	1	1	3	2	0	0	3	1	21
Total	202	218	223	265	217	225	225	201	229	569	244	212	3030

Oregon Hepatitis C (acute) Cases
January - June

	Age Group in Years												Total
	00-04	05-09	10-14	15-19	20-24	25-29	30-39	40-49	50-59	60-69	70-79	80+	
2005	0	0	0	2	0	5	1	2	3	0	0	0	13
2006	0	0	0	3	1	5	4	3	2	0	0	0	18
2007	0	0	0	0	1	1	2	6	2	0	0	0	12
2008	0	0	0	1	2	2	4	3	1	1	0	0	14
2009	0	0	0	0	1	4	5	1	1	0	0	0	12
2010	0	0	0	0	2	2	2	5	2	0	0	0	13
2011	0	0	0	2	2	3	1	4	1	0	0	0	13
2012	1	0	0	2	2	8	0	4	3	0	0	0	20
2013	0	0	0	0	1	0	5	0	1	0	0	0	7
2014	0	0	0	4	2	2	6	6	2	0	2	0	24
2015	0	0	0	0	1	1	2	2	1	0	0	0	7
2016	0	0	1	1	3	4	2	3	2	1	0	0	17
Total	1	0	1	15	18	37	34	39	21	2	2	0	170

	2005	2006	2007	2008	2009	2010	2011	2012	2013	2014	2015	2016	Total
Baker	1	0	0	0	0	0	0	0	0	0	0	0	1
Benton	0	0	0	0	0	0	0	2	0	2	0	0	4
Clackamas	1	2	1	2	2	1	0	1	4	6	1	2	23
Clatsop	0	1	0	0	1	0	0	0	0	0	0	0	2
Columbia	0	0	0	0	0	0	0	0	0	0	0	0	0
Coos	0	0	0	0	0	0	0	0	0	0	0	0	0
Crook	0	0	0	0	0	0	0	0	0	0	0	0	0
Curry	0	0	0	0	0	0	0	0	0	0	1	0	1
Deschutes	0	2	0	0	0	0	1	1	1	0	0	1	6
Douglas	0	1	1	0	0	4	0	2	0	4	0	4	16
Gilliam	0	0	0	0	0	0	0	0	0	0	0	0	0
Grant	0	0	0	0	0	0	0	0	0	0	0	0	0
Harney	0	0	0	0	0	0	0	0	0	0	1	0	1
Hood River	0	0	1	0	0	2	0	0	0	0	0	0	3
Jackson	4	0	0	1	1	0	0	0	0	0	0	0	6
Jefferson	0	0	1	0	1	0	0	0	0	0	0	0	2
Josephine	1	0	0	1	0	0	0	1	0	0	0	0	3
Klamath	0	0	0	0	3	0	1	1	0	0	0	0	5
Lake	0	0	0	0	0	0	0	0	0	0	0	0	0
Lane	0	1	1	2	2	4	4	2	1	4	3	4	28
Lincoln	0	0	0	1	0	0	0	0	1	0	0	0	2
Linn	0	0	0	1	0	0	1	0	0	0	0	0	2
Malheur	0	1	0	0	0	0	0	0	0	0	1	0	2
Marion	0	0	0	0	0	1	1	6	0	0	0	1	9
Morrow	0	0	0	0	0	0	0	0	0	0	0	0	0
Multnomah	5	7	5	1	1	1	2	3	0	8	0	3	36
Polk	1	1	0	1	0	0	1	0	0	0	0	0	4
Sherman	0	0	0	0	0	0	0	0	0	0	0	0	0
Tillamook	0	0	0	0	0	0	0	0	0	0	0	0	0
Umatilla	0	2	1	0	1	0	1	0	0	0	0	0	5
Union	0	0	0	0	0	0	0	0	0	0	0	0	0
Wallowa	0	0	0	0	0	0	0	0	0	0	0	0	0
Wasco	0	0	1	0	0	0	0	0	0	0	0	0	1
Washington	0	0	0	1	0	0	1	1	0	0	0	1	4
Wheeler	0	0	0	0	0	0	0	0	0	0	0	0	0
Yamhill	0	0	0	3	0	0	0	0	0	0	0	1	4
Total	13	18	12	14	12	13	13	20	7	24	7	17	170

	Sex			Total
	F	M	U	
2005	6	7	0	13
2006	12	6	0	18
2007	6	6	0	12
2008	8	6	0	14
2009	2	10	0	12
2010	9	4	0	13
2011	8	5	0	13
2012	8	12	0	20
2013	3	4	0	7
2014	18	6	0	24
2015	4	3	0	7
2016	7	10	0	17
Total	91	79	0	170

	Race					Total
	A	B	N	W	U	
2005	0	0	0	9	4	13
2006	0	0	0	13	5	18
2007	0	0	1	7	4	12
2008	0	0	0	10	4	14
2009	0	0	4	6	2	12
2010	0	1	0	10	2	13
2011	0	0	0	11	2	13
2012	0	0	1	17	2	20
2013	0	0	0	6	1	7
2014	0	0	2	16	6	24
2015	0	0	0	6	1	7
2016	0	0	0	15	2	17
Total	0	1	8	126	35	170

Oregon Hepatitis C (chronic) Cases
January - June

	Age Group in Years												Total
	00-04	05-09	10-14	15-19	20-24	25-29	30-39	40-49	50-59	60-69	70-79	80+	
2005	0	0	1	3	7	6	29	76	89	17	4	1	233
2006	10	1	1	12	60	112	422	990	1025	175	63	19	2890
2007	14	1	4	27	68	136	559	1122	1243	235	55	17	3481
2008	8	7	4	17	73	152	431	1038	1281	244	58	20	3333
2009	1	1	2	26	80	134	375	919	1210	323	54	28	3153
2010	1	1	6	20	66	103	324	744	1052	313	35	9	2674
2011	0	0	1	26	69	107	336	761	1091	414	49	16	2870
2012	0	3	1	20	101	126	326	580	893	414	41	11	2516
2013	5	2	2	27	97	126	291	437	742	372	48	8	2157
2014	4	0	0	29	149	147	330	501	954	535	58	15	2722
2015	2	2	0	18	140	190	407	421	961	857	69	18	3085
2016	1	0	2	28	143	229	407	445	906	758	86	22	3027
Total	46	18	24	253	1053	1568	4237	8034	11447	4657	620	184	32141

	2005	2006	2007	2008	2009	2010	2011	2012	2013	2014	2015	2016	Total
Baker	0	10	17	14	18	7	5	12	13	9	18	18	141
Benton	1	35	22	33	39	28	32	23	22	24	26	24	309
Clackamas	30	228	209	221	184	124	156	141	188	233	245	213	2172
Clatsop	11	54	39	33	33	30	38	29	20	39	45	48	419
Columbia	3	18	55	36	33	29	34	33	26	30	21	52	370
Coos	2	80	61	91	81	62	63	71	31	59	62	68	731
Crook	12	2	6	5	7	12	7	16	6	14	14	23	124
Curry	1	13	26	30	34	25	20	21	14	14	17	22	237
Deschutes	2	104	78	108	104	77	111	106	85	125	82	111	1093
Douglas	20	146	130	141	103	101	136	71	71	118	118	127	1282
Gilliam	0	1	2	2	1	2	2	1	0	1	1	1	14
Grant	0	0	2	4	4	3	5	0	2	0	2	6	28
Harney	0	2	4	2	4	6	6	6	6	6	5	3	50
Hood River	1	3	5	8	9	2	4	10	1	6	5	10	64
Jackson	21	183	189	228	207	126	187	124	108	136	214	203	1926
Jefferson	0	14	6	21	21	20	28	34	41	31	22	27	265
Josephine	1	106	94	88	93	73	88	48	53	78	94	106	922
Klamath	0	64	61	91	81	56	58	35	38	54	49	53	640
Lake	0	14	10	8	10	5	6	1	11	13	3	11	92
Lane	8	185	206	312	338	307	278	248	237	300	300	264	2983
Lincoln	3	53	52	56	52	38	49	45	40	52	69	43	552
Linn	1	99	103	98	116	100	104	96	85	87	96	99	1084
Malheur	1	68	73	60	61	51	47	38	30	16	27	45	517
Marion	22	325	356	286	257	286	267	221	185	222	248	230	2905
Morrow	0	5	5	5	1	0	8	3	3	4	8	3	45
Multnomah	74	957	1085	819	772	687	731	708	509	598	783	712	8435
Polk	1	36	36	44	44	33	37	28	26	35	42	38	400
Sherman	0	0	0	1	0	1	0	3	0	0	0	2	7
Tillamook	1	23	13	27	13	16	25	14	11	21	22	17	203
Umatilla	5	84	102	75	108	91	45	64	35	63	53	60	785
Union	1	5	6	8	16	13	26	9	8	12	8	15	127
Wallowa	0	1	1	3	2	4	5	0	3	4	2	6	31
Wasco	0	26	31	17	14	18	17	17	13	14	15	25	207
Washington	10	281	332	323	254	203	190	169	183	248	318	267	2778
Wheeler	0	1	0	3	3	0	0	2	0	0	2	2	13
Yamhill	3	64	90	47	50	44	57	70	58	57	51	74	665
Total	235	3290	3507	3348	3167	2680	2872	2517	2162	2723	3087	3028	32616

	Sex			Total
	F	M	U	
2005	103	132	0	235
2006	1215	1992	83	3290
2007	1330	2128	49	3507
2008	1357	1935	56	3348
2009	1219	1918	30	3167
2010	1029	1644	7	2680
2011	1080	1792	0	2872
2012	890	1625	2	2517
2013	850	1307	5	2162
2014	1105	1616	2	2723
2015	1164	1917	6	3087
2016	1151	1872	5	3028
Total	12493	19878	245	32616

	Race					Total
	A	B	N	W	U	
2005	3	4	2	87	139	235
2006	15	47	34	831	2363	3290
2007	14	49	41	986	2417	3507
2008	14	51	31	1159	2093	3348
2009	20	48	31	947	2121	3167
2010	16	62	41	1001	1560	2680
2011	30	55	40	1363	1384	2872
2012	29	55	37	1161	1235	2517
2013	12	22	31	902	1195	2162
2014	22	41	31	1181	1448	2723
2015	35	58	39	1740	1215	3087
2016	33	61	38	1643	1253	3028
Total	243	553	396	13001	18423	32616

Oregon HUS Cases
January - June

	Age Group in Years												Total
	00-04	05-09	10-14	15-19	20-24	25-29	30-39	40-49	50-59	60-69	70-79	80+	
2005	3	0	0	0	0	0	0	0	0	0	0	0	3
2006	1	0	0	1	0	0	0	0	0	0	0	0	2
2007	5	0	0	1	0	0	0	0	0	0	0	0	6
2008	3	0	0	1	0	0	0	0	0	0	0	0	4
2009	0	0	1	0	0	0	0	0	0	0	1	0	2
2010	2	0	0	0	0	0	0	0	0	0	0	0	2
2011	2	0	0	0	0	0	0	0	0	0	0	0	2
2012	3	0	3	0	0	0	0	0	1	0	0	0	7
2013	1	1	0	2	1	0	0	1	0	0	1	0	7
2014	2	0	0	0	0	0	0	0	0	0	0	0	2
2015	1	1	0	0	0	0	0	0	1	1	0	0	4
2016	3	0	0	0	0	0	0	0	0	0	0	0	3
Total	26	2	4	5	1	0	0	1	2	1	2	0	44

	Sex			Total
	F	M	U	
2005	3	0	0	3
2006	1	1	0	2
2007	3	3	0	6
2008	1	3	0	4
2009	2	0	0	2
2010	0	2	0	2
2011	0	2	0	2
2012	7	0	0	7
2013	4	3	0	7
2014	0	2	0	2
2015	1	3	0	4
2016	0	3	0	3
Total	22	22	0	44

	Race					Total
	A	B	N	W	U	
2005	0	0	0	3	0	3
2006	0	0	0	2	0	2
2007	0	0	0	5	1	6
2008	0	1	0	3	0	4
2009	0	0	0	1	1	2
2010	0	0	0	2	0	2
2011	0	0	0	2	0	2
2012	0	0	0	5	2	7
2013	0	0	0	7	0	7
2014	0	0	0	2	0	2
2015	0	0	0	3	1	4
2016	0	0	0	3	0	3
Total	0	1	0	38	5	44

	2005	2006	2007	2008	2009	2010	2011	2012	2013	2014	2015	2016	Total
Baker	0	1	0	0	0	0	0	0	0	0	0	0	1
Benton	0	0	0	0	0	0	0	0	1	0	0	0	1
Clackamas	0	1	0	0	0	0	0	1	2	0	0	0	4
Clatsop	0	0	0	0	0	0	0	0	0	0	0	0	0
Columbia	0	0	0	0	0	0	0	0	0	0	0	0	0
Coos	0	0	1	0	1	0	0	0	0	0	0	0	2
Crook	0	0	0	0	0	0	0	0	0	0	0	0	0
Curry	0	0	0	0	0	0	0	0	0	0	0	0	0
Deschutes	0	0	0	0	0	0	0	0	0	0	0	0	0
Douglas	0	0	0	0	0	0	1	1	0	0	0	0	2
Gilliam	0	0	0	0	0	0	0	0	0	0	0	0	0
Grant	0	0	0	0	0	0	0	0	0	0	0	0	0
Harney	0	0	0	0	0	0	0	0	0	0	0	0	0
Hood River	0	0	0	0	0	0	0	0	0	0	0	0	0
Jackson	0	0	1	0	0	0	0	0	0	2	0	1	4
Jefferson	0	0	0	0	0	0	0	0	0	0	0	0	0
Josephine	0	0	0	0	0	0	0	0	0	0	0	0	0
Klamath	1	0	0	0	0	0	0	1	1	0	1	1	5
Lake	0	0	0	0	0	0	0	0	0	0	0	0	0
Lane	0	0	0	0	0	0	0	0	0	0	1	0	1
Lincoln	0	0	0	0	1	0	0	0	0	0	0	0	1
Linn	1	0	0	0	0	0	1	0	0	0	0	0	2
Malheur	0	0	0	0	0	0	0	0	0	0	0	0	0
Marion	1	0	1	1	0	0	0	1	2	0	0	0	6
Morrow	0	0	1	0	0	0	0	0	0	0	0	1	2
Multnomah	0	0	0	1	0	1	0	1	1	0	1	0	5
Polk	0	0	0	0	0	0	0	0	0	0	0	0	0
Sherman	0	0	1	0	0	0	0	0	0	0	0	0	1
Tillamook	0	0	0	0	0	0	0	0	0	0	0	0	0
Umatilla	0	0	0	1	0	0	0	0	0	0	0	0	1
Union	0	0	0	0	0	0	0	0	0	0	0	0	0
Wallowa	0	0	0	0	0	0	0	0	0	0	0	0	0
Wasco	0	0	0	0	0	1	0	0	0	0	0	0	1
Washington	0	0	1	1	0	0	0	2	0	0	0	0	4
Wheeler	0	0	0	0	0	0	0	0	0	0	0	0	0
Yamhill	0	0	0	0	0	0	0	0	0	0	1	0	1
Total	3	2	6	4	2	2	2	7	7	2	4	3	44

Oregon Legionellosis Cases
January - June

	Age Group in Years												Total
	00-04	05-09	10-14	15-19	20-24	25-29	30-39	40-49	50-59	60-69	70-79	80+	
2005	0	0	0	0	0	0	1	1	1	0	0	0	3
2006	0	0	0	0	2	1	0	2	3	3	1	1	13
2007	0	0	0	0	0	0	0	0	1	1	1	0	3
2008	0	0	0	0	0	0	0	5	1	2	1	2	11
2009	0	0	0	0	0	0	1	0	2	3	0	0	6
2010	1	0	0	0	0	0	2	1	1	3	0	0	8
2011	0	0	0	0	0	0	0	2	1	2	0	1	6
2012	0	0	0	0	0	0	1	1	2	4	8	2	18
2013	0	0	0	0	0	0	0	4	5	5	2	0	16
2014	0	0	0	0	0	0	2	4	10	6	10	4	36
2015	0	0	0	0	0	0	0	5	2	10	1	5	23
2016	0	0	0	0	0	0	3	3	3	6	2	1	18
Total	1	0	0	0	2	1	10	28	32	45	26	16	161

	2005	2006	2007	2008	2009	2010	2011	2012	2013	2014	2015	2016	Total
Baker	0	0	0	0	0	0	0	0	0	0	0	0	0
Benton	0	0	0	0	0	0	0	0	0	0	0	0	0
Clackamas	1	2	0	0	2	0	0	3	2	2	4	1	17
Clatsop	0	0	0	1	0	0	0	0	0	2	0	0	3
Columbia	0	0	0	0	0	0	0	1	0	0	0	2	3
Coos	0	0	0	0	0	0	0	0	0	0	0	0	0
Crook	0	0	0	0	0	0	0	0	0	0	0	0	0
Curry	0	0	0	0	0	0	0	0	0	2	0	0	2
Deschutes	0	1	0	0	0	1	0	1	0	0	1	0	4
Douglas	0	1	0	0	0	0	0	0	0	0	1	0	2
Gilliam	0	0	0	0	0	0	0	0	0	0	0	0	0
Grant	0	0	0	0	0	0	0	0	0	2	0	0	2
Harney	0	0	0	0	0	0	0	0	0	0	0	0	0
Hood River	0	0	0	0	0	0	0	0	0	0	0	0	0
Jackson	0	0	0	0	1	1	0	1	1	2	2	2	10
Jefferson	0	0	0	0	0	0	0	0	0	0	0	0	0
Josephine	0	0	0	0	0	0	0	1	0	2	0	0	3
Klamath	0	0	0	0	0	0	0	0	0	2	1	0	3
Lake	0	0	0	0	0	0	0	0	0	0	0	0	0
Lane	0	3	0	2	0	2	2	3	4	0	3	2	21
Lincoln	0	0	0	0	0	0	1	1	0	0	2	0	4
Linn	0	0	0	0	0	0	0	0	1	0	0	0	1
Malheur	0	0	0	0	0	1	0	0	0	0	0	1	2
Marion	0	0	1	0	0	0	0	0	0	0	0	1	2
Morrow	0	0	0	0	0	0	0	0	0	0	0	0	0
Multnomah	1	5	2	4	2	2	1	3	6	10	6	3	45
Polk	0	0	0	0	0	0	0	0	0	0	1	1	2
Sherman	0	0	0	0	0	0	0	0	0	0	0	0	0
Tillamook	0	0	0	0	0	0	0	0	0	0	0	0	0
Umatilla	0	0	0	0	0	0	0	0	0	0	0	0	0
Union	0	0	0	0	0	0	0	0	0	0	0	1	1
Wallowa	0	0	0	1	0	0	0	1	0	0	0	0	2
Wasco	0	0	0	1	0	1	0	1	0	0	0	0	3
Washington	1	1	0	2	1	0	2	2	2	12	2	4	29
Wheeler	0	0	0	0	0	0	0	0	0	0	0	0	0
Yamhill	0	0	0	0	0	0	0	0	0	0	0	0	0
Total	3	13	3	11	6	8	6	18	16	36	23	18	161

	Sex			Total
	F	M	U	
2005	1	2	0	3
2006	4	9	0	13
2007	0	3	0	3
2008	3	8	0	11
2009	3	3	0	6
2010	5	3	0	8
2011	3	3	0	6
2012	6	12	0	18
2013	8	8	0	16
2014	24	12	0	36
2015	5	18	0	23
2016	5	13	0	18
Total	67	94	0	161

	Race					Total
	A	B	N	W	U	
2005	0	0	1	2	0	3
2006	0	0	0	11	2	13
2007	0	0	0	2	1	3
2008	0	1	0	8	2	11
2009	0	0	0	5	1	6
2010	0	0	0	8	0	8
2011	0	0	0	5	1	6
2012	0	0	0	16	2	18
2013	0	0	0	15	1	16
2014	2	0	0	30	4	36
2015	1	0	0	19	3	23
2016	1	0	1	15	1	18
Total	4	1	2	136	18	161

Oregon Listeriosis Cases
January - June

	Age Group in Years												Total
	00-04	05-09	10-14	15-19	20-24	25-29	30-39	40-49	50-59	60-69	70-79	80+	
2005	1	0	0	0	0	0	0	1	0	0	1	1	4
2006	0	0	0	0	0	0	0	0	4	0	1	1	6
2007	0	0	0	0	0	0	0	0	0	0	1	1	2
2008	0	0	0	0	0	0	1	0	0	0	0	1	2
2009	2	0	0	1	0	0	0	0	0	1	3	1	8
2010	2	0	0	0	1	1	1	0	0	1	0	0	6
2011	0	0	0	0	0	0	0	0	0	1	1	1	3
2012	0	0	0	1	1	0	0	1	4	1	1	2	11
2013	1	0	0	0	0	0	0	0	0	0	0	0	1
2014	0	0	0	2	0	0	0	0	4	6	0	2	14
2015	2	0	0	0	0	0	1	0	2	1	3	1	10
2016	0	0	0	0	0	1	0	0	1	2	1	0	5
Total	8	0	0	4	2	2	3	2	15	13	12	11	72

	Sex			Total
	F	M	U	
2005	3	1	0	4
2006	2	4	0	6
2007	1	1	0	2
2008	2	0	0	2
2009	5	3	0	8
2010	5	1	0	6
2011	2	1	0	3
2012	7	4	0	11
2013	1	0	0	1
2014	6	8	0	14
2015	2	8	0	10
2016	2	3	0	5
Total	38	34	0	72

	Race					Total
	A	B	N	W	U	
2005	0	0	0	4	0	4
2006	0	0	0	6	0	6
2007	0	0	0	2	0	2
2008	0	0	0	2	0	2
2009	0	0	0	7	1	8
2010	0	0	0	6	0	6
2011	0	0	0	3	0	3
2012	0	1	0	10	0	11
2013	0	0	0	1	0	1
2014	2	0	0	8	4	14
2015	0	0	0	8	2	10
2016	0	1	0	3	1	5
Total	2	2	0	60	8	72

	2005	2006	2007	2008	2009	2010	2011	2012	2013	2014	2015	2016	Total
Baker	0	0	0	0	0	0	0	0	0	0	0	0	0
Benton	0	0	0	0	0	0	0	0	0	0	0	0	0
Clackamas	1	0	1	0	1	3	0	3	0	2	1	0	12
Clatsop	0	0	0	0	1	0	0	0	0	0	0	0	1
Columbia	0	0	0	0	0	0	0	1	0	0	0	0	1
Coos	1	0	0	0	0	0	0	0	0	2	0	0	3
Crook	0	0	0	0	0	0	0	0	0	0	0	0	0
Curry	0	0	0	0	0	0	0	0	0	0	0	0	0
Deschutes	0	0	0	0	0	0	0	1	0	0	0	0	1
Douglas	0	0	0	0	0	0	0	1	0	0	0	0	1
Gilliam	0	0	0	0	0	0	0	0	0	0	0	0	0
Grant	0	0	0	0	0	0	0	0	0	0	0	0	0
Harney	0	0	0	0	0	0	0	0	0	0	0	0	0
Hood River	0	0	0	0	0	0	0	0	0	0	0	0	0
Jackson	0	0	0	0	0	0	0	0	0	0	0	0	0
Jefferson	0	0	0	0	0	0	0	0	0	0	0	0	0
Josephine	0	0	0	0	0	0	0	0	1	0	0	0	1
Klamath	0	0	0	0	0	0	0	0	0	0	0	0	0
Lake	0	0	0	0	0	0	0	0	0	0	0	0	0
Lane	0	0	0	0	0	0	1	2	0	0	1	0	4
Lincoln	0	0	0	0	1	0	1	0	0	2	0	0	4
Linn	0	0	0	0	0	0	0	0	0	0	0	0	0
Malheur	0	0	0	0	0	0	0	0	0	0	0	0	0
Marion	1	4	0	0	1	0	0	0	0	0	2	2	10
Morrow	0	0	0	0	0	0	0	0	0	0	0	0	0
Multnomah	0	1	0	0	4	1	0	1	0	4	3	1	15
Polk	0	0	0	0	0	0	0	0	0	2	0	0	2
Sherman	0	0	0	0	0	0	0	0	0	0	0	0	0
Tillamook	0	0	0	0	0	0	1	0	0	0	0	0	1
Umatilla	0	0	0	0	0	0	0	0	0	0	0	0	0
Union	0	0	0	0	0	0	0	0	0	0	0	0	0
Wallowa	0	0	0	0	0	0	0	0	0	0	0	0	0
Wasco	0	0	1	0	0	0	0	0	0	0	0	0	1
Washington	1	1	0	2	0	2	0	2	0	2	3	2	15
Wheeler	0	0	0	0	0	0	0	0	0	0	0	0	0
Yamhill	0	0	0	0	0	0	0	0	0	0	0	0	0
Total	4	6	2	2	8	6	3	11	1	14	10	5	72

Oregon Lyme disease Cases
January - June

	Age Group in Years												Total
	00-04	05-09	10-14	15-19	20-24	25-29	30-39	40-49	50-59	60-69	70-79	80+	
2005	0	2	0	0	1	0	1	2	4	2	0	1	13
2006	0	0	0	0	0	0	2	0	1	3	0	1	7
2007	1	3	1	0	0	2	5	3	4	0	0	0	19
2008	0	0	1	2	0	2	3	3	4	3	1	0	19
2009	0	2	0	0	1	3	5	6	2	3	1	0	23
2010	1	1	1	0	0	4	4	4	5	1	2	0	23
2011	1	0	0	0	3	0	4	2	3	3	1	0	17
2012	1	1	0	2	1	0	4	7	3	4	0	0	23
2013	0	1	1	0	2	2	1	7	3	2	1	0	20
2014	0	0	4	2	5	8	4	12	0	0	2	0	37
2015	0	0	1	0	0	3	6	4	1	2	0	0	17
2016	1	1	1	1	1	7	5	8	3	1	1	1	31
Total	5	11	10	7	14	31	44	58	33	24	9	3	249

	Sex			Total
	F	M	U	
2005	9	4	0	13
2006	1	6	0	7
2007	14	5	0	19
2008	10	9	0	19
2009	17	6	0	23
2010	16	7	0	23
2011	8	9	0	17
2012	19	4	0	23
2013	13	7	0	20
2014	23	14	0	37
2015	11	6	0	17
2016	18	13	0	31
Total	159	90	0	249

	Race					Total
	A	B	N	W	U	
2005	0	0	0	13	0	13
2006	0	0	0	7	0	7
2007	0	0	0	16	3	19
2008	0	0	0	17	2	19
2009	1	0	0	16	6	23
2010	0	0	0	18	5	23
2011	0	0	1	11	5	17
2012	0	0	0	16	7	23
2013	1	0	1	17	1	20
2014	0	0	0	27	10	37
2015	0	0	1	15	1	17
2016	1	0	0	20	10	31
Total	3	0	3	193	50	249

	2005	2006	2007	2008	2009	2010	2011	2012	2013	2014	2015	2016	Total
Baker	0	0	0	0	0	0	0	0	0	0	0	0	0
Benton	1	1	2	1	0	5	0	2	1	1	0	2	16
Clackamas	1	0	2	1	0	0	1	1	1	2	5	2	16
Clatsop	0	0	0	0	0	0	0	0	0	0	0	0	0
Columbia	0	1	0	0	0	1	0	0	0	0	0	1	3
Coos	0	0	0	0	0	0	0	0	0	0	0	0	0
Crook	0	0	0	0	0	0	0	0	0	0	0	1	1
Curry	0	0	0	0	1	0	0	0	0	0	0	0	1
Deschutes	1	0	0	1	0	0	0	0	2	2	1	0	7
Douglas	0	0	1	0	0	2	2	4	2	4	1	3	19
Gilliam	0	0	0	0	0	0	0	0	0	0	0	0	0
Grant	0	0	0	0	0	0	0	0	1	0	0	0	1
Harney	0	0	0	0	0	0	0	0	0	0	0	0	0
Hood River	2	0	3	0	1	1	1	1	1	2	0	0	12
Jackson	2	2	4	3	2	0	4	2	2	8	1	5	35
Jefferson	0	0	0	0	0	0	0	0	0	0	0	0	0
Josephine	2	0	2	3	2	1	3	8	3	0	0	4	28
Klamath	0	0	0	1	0	0	1	0	1	0	2	0	5
Lake	0	1	0	0	0	0	0	0	0	0	0	0	1
Lane	0	1	0	1	5	0	3	1	0	0	1	2	14
Lincoln	0	0	0	1	0	0	0	0	0	0	0	1	2
Linn	1	0	0	0	0	2	1	0	1	0	0	1	6
Malheur	0	0	1	0	0	0	0	0	0	0	0	0	1
Marion	0	0	1	1	0	0	0	0	0	0	0	2	4
Morrow	0	0	0	0	0	0	0	0	0	0	0	1	1
Multnomah	2	1	2	5	6	9	1	3	4	12	3	4	52
Polk	0	0	0	0	0	1	0	0	1	0	0	0	2
Sherman	0	0	0	0	0	0	0	0	0	0	0	0	0
Tillamook	0	0	1	0	0	0	0	0	0	0	0	0	1
Umatilla	0	0	0	0	1	0	0	0	0	0	1	0	2
Union	0	0	0	0	1	1	0	0	0	0	0	0	2
Wallowa	0	0	0	0	0	0	0	0	0	0	0	0	0
Wasco	0	0	0	1	0	0	0	0	0	0	0	0	1
Washington	1	0	0	0	2	0	0	1	0	6	2	2	14
Wheeler	0	0	0	0	0	0	0	0	0	0	0	0	0
Yamhill	0	0	0	0	2	0	0	0	0	0	0	0	2
Total	13	7	19	19	23	23	17	23	20	37	17	31	249

Oregon Malaria Cases
January - June

	Age Group in Years												Total
	00-04	05-09	10-14	15-19	20-24	25-29	30-39	40-49	50-59	60-69	70-79	80+	
2005	0	0	0	0	1	0	0	1	1	0	0	0	3
2006	2	0	0	0	1	0	0	1	2	1	0	0	7
2007	0	2	0	1	1	3	2	2	0	1	0	0	12
2008	0	0	0	0	0	0	3	1	0	0	0	0	4
2009	0	0	0	0	0	0	3	1	1	1	0	0	6
2010	0	0	0	0	2	2	2	0	0	1	0	0	7
2011	0	0	0	2	1	1	1	0	2	0	0	0	7
2012	0	0	0	0	2	0	0	0	0	1	0	0	3
2013	0	0	0	1	1	0	1	1	0	0	0	0	4
2014	0	0	0	0	0	2	4	2	2	4	0	0	14
2015	1	0	0	1	1	1	2	0	1	0	1	0	8
2016	0	0	0	0	0	1	4	0	2	0	0	0	7
Total	3	2	0	5	10	10	22	9	11	9	1	0	82

	2005	2006	2007	2008	2009	2010	2011	2012	2013	2014	2015	2016	Total
Baker	0	0	0	0	0	0	0	0	0	0	0	0	0
Benton	0	1	1	0	0	0	0	0	0	0	1	0	3
Clackamas	0	1	0	0	1	0	0	0	1	2	1	3	9
Clatsop	0	0	0	0	0	0	0	0	0	0	0	0	0
Columbia	0	0	0	0	0	0	0	0	0	0	0	0	0
Coos	0	0	0	0	0	0	0	0	0	0	0	0	0
Crook	0	0	0	0	0	0	0	1	0	0	0	0	1
Curry	0	0	0	0	0	0	0	0	0	0	0	0	0
Deschutes	0	1	0	1	0	0	0	0	0	0	1	0	3
Douglas	1	0	0	0	0	0	0	0	0	0	0	0	1
Gilliam	0	0	0	0	0	0	0	0	0	0	0	0	0
Grant	0	0	0	0	0	0	0	0	0	0	0	0	0
Harney	0	0	0	0	0	0	0	0	0	0	0	0	0
Hood River	0	0	0	0	0	0	0	0	0	0	0	0	0
Jackson	0	0	1	0	0	0	0	0	0	0	0	0	1
Jefferson	0	0	0	0	0	0	0	0	0	0	0	0	0
Josephine	0	0	0	0	1	0	0	0	0	0	0	0	1
Klamath	0	0	0	0	0	0	0	0	0	0	0	0	0
Lake	0	0	0	0	0	0	0	0	0	0	0	0	0
Lane	0	0	0	0	1	0	1	0	0	0	1	0	3
Lincoln	0	0	0	0	0	0	0	0	0	0	0	0	0
Linn	1	0	0	0	0	0	0	0	0	0	0	0	1
Malheur	0	0	0	0	0	0	0	0	0	0	0	0	0
Marion	0	0	2	0	0	2	1	0	0	0	1	1	7
Morrow	0	0	0	0	0	0	0	0	0	0	0	0	0
Multnomah	1	1	8	3	2	1	5	2	3	12	2	2	42
Polk	0	0	0	0	0	0	0	0	0	0	0	0	0
Sherman	0	0	0	0	0	0	0	0	0	0	0	0	0
Tillamook	0	0	0	0	0	0	0	0	0	0	0	0	0
Umatilla	0	0	0	0	0	0	0	0	0	0	0	0	0
Union	0	0	0	0	0	0	0	0	0	0	1	0	1
Wallowa	0	0	0	0	0	0	0	0	0	0	0	0	0
Wasco	0	0	0	0	0	0	0	0	0	0	0	0	0
Washington	0	3	0	0	1	3	0	0	0	0	0	1	8
Wheeler	0	0	0	0	0	0	0	0	0	0	0	0	0
Yamhill	0	0	0	0	0	1	0	0	0	0	0	0	1
Total	3	7	12	4	6	7	7	3	4	14	8	7	82

	Sex			Total
	F	M	U	
2005	0	3	0	3
2006	2	5	0	7
2007	6	6	0	12
2008	1	3	0	4
2009	1	5	0	6
2010	1	6	0	7
2011	4	3	0	7
2012	1	2	0	3
2013	1	3	0	4
2014	2	12	0	14
2015	2	6	0	8
2016	0	7	0	7
Total	21	61	0	82

	Race					Total
	A	B	N	W	U	
2005	0	1	0	2	0	3
2006	1	2	0	2	2	7
2007	1	5	0	6	0	12
2008	0	2	0	2	0	4
2009	0	1	0	5	0	6
2010	0	1	0	5	1	7
2011	1	1	0	3	2	7
2012	0	1	0	2	0	3
2013	0	2	0	2	0	4
2014	0	4	0	6	4	14
2015	0	4	0	4	0	8
2016	0	2	0	2	3	7
Total	3	26	0	41	12	82

Oregon Measles Cases
January - June

	Age Group in Years												Total
	00-04	05-09	10-14	15-19	20-24	25-29	30-39	40-49	50-59	60-69	70-79	80+	
2005	0	0	0	0	0	1	1	0	0	0	0	0	2
2006	0	0	0	0	0	0	0	1	0	0	0	0	1
2007	0	0	0	0	2	0	0	0	0	0	0	0	2
2008	0	0	0	0	1	0	0	0	0	0	0	0	1
2009	0	0	0	0	0	0	0	0	0	0	0	0	0
2010	0	0	0	0	0	0	0	0	0	0	0	0	0
2011	1	0	0	0	0	0	1	0	0	0	0	0	2
2012	1	0	0	0	0	0	0	0	0	0	0	0	1
2013	0	3	0	0	0	0	0	0	0	0	0	0	3
2014	6	4	0	0	0	0	0	0	0	0	0	0	10
2015	0	0	0	0	0	0	0	2	0	0	0	0	2
2016	0	0	0	0	0	0	0	0	0	0	0	0	0
Total	8	7	0	0	3	1	2	3	0	0	0	0	24

	Sex			Total
	F	M	U	
2005	0	2	0	2
2006	0	1	0	1
2007	0	2	0	2
2008	1	0	0	1
2009	0	0	0	0
2010	0	0	0	0
2011	0	2	0	2
2012	0	1	0	1
2013	1	2	0	3
2014	4	6	0	10
2015	0	2	0	2
2016	0	0	0	0
Total	6	18	0	24

	Race					Total
	A	B	N	W	U	
2005	0	0	0	0	2	2
2006	0	0	0	1	0	1
2007	0	1	0	1	0	2
2008	0	0	0	1	0	1
2009	0	0	0	0	0	0
2010	0	0	0	0	0	0
2011	0	0	0	2	0	2
2012	0	0	0	1	0	1
2013	0	0	0	3	0	3
2014	2	2	2	4	0	10
2015	0	0	0	2	0	2
2016	0	0	0	0	0	0
Total	2	3	2	15	2	24

	2005	2006	2007	2008	2009	2010	2011	2012	2013	2014	2015	2016	Total
Baker	0	0	0	0	0	0	0	0	0	0	0	0	0
Benton	0	0	0	0	0	0	0	0	0	0	0	0	0
Clackamas	0	0	0	0	0	0	0	0	0	0	0	0	0
Clatsop	0	0	0	0	0	0	0	0	0	0	0	0	0
Columbia	0	0	0	0	0	0	0	0	0	0	0	0	0
Coos	0	0	0	0	0	0	0	0	0	0	0	0	0
Crook	0	0	0	0	0	0	0	0	0	0	0	0	0
Curry	0	0	0	0	0	0	0	0	0	0	0	0	0
Deschutes	0	0	0	0	0	0	0	0	0	0	0	0	0
Douglas	0	0	0	0	0	0	0	0	0	0	0	0	0
Gilliam	0	0	0	0	0	0	0	0	0	0	0	0	0
Grant	0	0	0	0	0	0	0	0	0	0	0	0	0
Harney	0	0	0	0	0	0	0	0	0	0	0	0	0
Hood River	0	0	0	0	0	0	2	0	0	0	0	0	2
Jackson	0	1	0	0	0	0	0	0	0	0	0	0	1
Jefferson	0	0	0	0	0	0	0	0	0	0	0	0	0
Josephine	0	0	0	0	0	0	0	0	0	0	0	0	0
Klamath	0	0	0	0	0	0	0	0	0	0	0	0	0
Lake	0	0	0	0	0	0	0	0	0	0	0	0	0
Lane	0	0	2	0	0	0	0	0	0	0	2	0	4
Lincoln	0	0	0	0	0	0	0	0	0	0	0	0	0
Linn	0	0	0	0	0	0	0	0	0	0	0	0	0
Malheur	0	0	0	0	0	0	0	0	0	0	0	0	0
Marion	0	0	0	0	0	0	0	0	3	8	0	0	11
Morrow	0	0	0	0	0	0	0	0	0	0	0	0	0
Multnomah	0	0	0	1	0	0	0	0	0	2	0	0	3
Polk	0	0	0	0	0	0	0	0	0	0	0	0	0
Sherman	0	0	0	0	0	0	0	0	0	0	0	0	0
Tillamook	0	0	0	0	0	0	0	0	0	0	0	0	0
Umatilla	0	0	0	0	0	0	0	0	0	0	0	0	0
Union	0	0	0	0	0	0	0	0	0	0	0	0	0
Wallowa	0	0	0	0	0	0	0	0	0	0	0	0	0
Wasco	0	0	0	0	0	0	0	0	0	0	0	0	0
Washington	2	0	0	0	0	0	0	1	0	0	0	0	3
Wheeler	0	0	0	0	0	0	0	0	0	0	0	0	0
Yamhill	0	0	0	0	0	0	0	0	0	0	0	0	0
Total	2	1	2	1	0	0	2	1	3	10	2	0	24

Oregon Meningococcal Disease Cases
January - June

	Age Group in Years												Total
	00-04	05-09	10-14	15-19	20-24	25-29	30-39	40-49	50-59	60-69	70-79	80+	
2005	8	1	1	7	6	0	1	1	3	0	1	1	30
2006	4	0	0	5	7	1	1	3	2	1	2	1	27
2007	6	2	1	2	0	2	0	0	1	1	1	5	21
2008	10	0	0	1	0	0	0	3	1	1	4	1	21
2009	7	1	0	2	2	0	2	3	0	1	0	3	21
2010	8	0	1	3	3	0	2	0	0	2	0	0	19
2011	8	1	1	1	3	0	1	1	1	2	2	2	23
2012	5	1	0	2	2	0	2	1	2	1	2	0	18
2013	1	0	0	1	0	1	0	0	1	1	1	1	7
2014	6	0	0	8	0	0	0	0	0	2	4	2	22
2015	2	1	0	5	1	1	0	0	0	2	1	2	15
2016	4	1	0	1	0	0	0	0	1	0	2	1	10
Total	69	8	4	38	24	5	9	12	12	14	20	19	234

	2005	2006	2007	2008	2009	2010	2011	2012	2013	2014	2015	2016	Total
Baker	0	0	0	0	0	0	0	0	0	0	0	0	0
Benton	1	1	0	0	0	1	0	0	0	2	0	0	5
Clackamas	2	0	0	1	3	0	0	1	2	8	1	1	19
Clatsop	0	1	0	2	0	0	1	1	0	0	0	0	5
Columbia	1	0	0	0	0	0	0	0	0	0	0	1	2
Coos	1	1	3	0	1	1	1	1	0	0	1	0	10
Crook	0	0	0	0	0	0	3	2	0	0	0	0	5
Curry	0	0	0	0	0	0	0	1	0	0	0	0	1
Deschutes	0	1	2	1	1	2	4	1	0	0	1	0	13
Douglas	3	5	0	2	0	6	1	1	0	2	1	2	23
Gilliam	0	0	0	0	0	0	0	0	0	0	0	0	0
Grant	0	0	0	0	0	0	0	0	0	0	0	0	0
Harney	0	0	0	0	0	0	0	0	0	0	0	0	0
Hood River	0	0	0	0	0	0	0	0	0	0	0	0	0
Jackson	4	2	1	1	1	1	2	0	0	2	1	3	18
Jefferson	1	0	0	0	0	0	0	0	0	0	0	0	1
Josephine	2	0	0	1	1	2	0	1	0	0	1	0	8
Klamath	2	1	0	1	0	0	0	0	0	0	0	0	4
Lake	0	0	0	0	0	0	0	0	0	0	0	0	0
Lane	4	0	3	1	3	2	2	4	1	0	7	0	27
Lincoln	0	0	2	2	0	0	0	0	0	0	0	0	4
Linn	0	1	2	0	0	0	0	0	1	0	0	0	4
Malheur	0	0	0	0	0	0	1	1	0	0	0	0	2
Marion	0	2	1	2	0	1	1	0	1	6	0	0	14
Morrow	0	0	0	0	0	0	0	0	0	0	0	0	0
Multnomah	5	4	4	4	7	2	5	2	1	0	1	3	38
Polk	1	2	0	0	0	0	0	0	0	2	0	0	5
Sherman	0	0	0	0	0	0	0	0	0	0	0	0	0
Tillamook	0	1	0	0	0	0	0	0	0	0	0	0	1
Umatilla	0	0	1	1	0	0	0	0	0	0	0	0	2
Union	0	0	0	0	0	0	0	0	0	0	0	0	0
Wallowa	0	0	0	0	0	0	0	0	0	0	0	0	0
Wasco	0	0	0	0	1	0	0	1	1	0	0	0	3
Washington	3	2	0	1	3	1	2	1	0	0	1	0	14
Wheeler	0	0	0	0	0	0	0	0	0	0	0	0	0
Yamhill	0	3	2	1	0	0	0	0	0	0	0	0	6
Total	30	27	21	21	21	19	23	18	7	22	15	10	234

	Sex			Total
	F	M	U	
2005	15	15	0	30
2006	15	12	0	27
2007	11	10	0	21
2008	13	7	1	21
2009	8	13	0	21
2010	5	14	0	19
2011	14	9	0	23
2012	9	9	0	18
2013	2	5	0	7
2014	12	10	0	22
2015	8	7	0	15
2016	6	4	0	10
Total	118	115	1	234

	Race					Total
	A	B	N	W	U	
2005	1	2	1	24	2	30
2006	0	0	0	25	2	27
2007	0	0	0	20	1	21
2008	0	1	0	19	1	21
2009	0	1	0	16	4	21
2010	0	1	2	15	1	19
2011	0	0	0	22	1	23
2012	0	1	0	14	3	18
2013	1	0	0	4	2	7
2014	0	0	2	14	6	22
2015	1	2	1	10	1	15
2016	0	1	0	7	2	10
Total	3	9	6	190	26	234

Oregon Non Mycobacterium TB Cases
January - June

	Age Group in Years												Total
	00-04	05-09	10-14	15-19	20-24	25-29	30-39	40-49	50-59	60-69	70-79	80+	
2007	0	0	0	0	0	0	0	0	0	0	0	0	0
2008	0	0	0	0	0	0	0	0	1	0	0	0	1
2009	0	0	0	0	0	0	0	0	0	0	0	0	0
2010	0	0	0	0	0	0	0	0	0	0	0	0	0
2011	0	0	0	0	0	0	0	0	0	0	0	0	0
2012	0	0	0	0	0	0	0	0	0	0	0	0	0
2013	0	0	0	0	0	0	0	0	0	0	0	0	0
2014	2	0	0	0	0	0	6	8	6	6	8	0	36
2015	8	0	0	0	1	0	0	2	6	8	1	0	26
2016	7	0	0	1	0	0	4	8	3	1	1	0	25
Total	17	0	0	1	1	0	10	18	16	15	10	0	88

	2007	2008	2009	2010	2011	2012	2013	2014	2015	2016	Total
Baker	0	0	0	0	0	0	0	0	1	0	1
Benton	0	0	0	0	0	0	0	2	0	0	2
Clackamas	0	0	0	0	0	0	0	2	1	4	7
Clatsop	0	0	0	0	0	0	0	2	0	0	2
Columbia	0	0	0	0	0	0	0	0	0	0	0
Coos	0	0	0	0	0	0	0	0	0	0	0
Crook	0	0	0	0	0	0	0	0	0	0	0
Curry	0	0	0	0	0	0	0	0	0	1	1
Deschutes	0	0	0	0	0	0	0	2	0	0	2
Douglas	0	0	0	0	0	0	0	2	0	0	2
Gilliam	0	0	0	0	0	0	0	0	0	0	0
Grant	0	0	0	0	0	0	0	0	0	0	0
Harney	0	0	0	0	0	0	0	0	1	0	1
Hood River	0	0	0	0	0	0	0	0	0	0	0
Jackson	0	0	0	0	0	0	0	2	5	3	10
Jefferson	0	0	0	0	0	0	0	0	0	0	0
Josephine	0	0	0	0	0	0	0	2	1	0	3
Klamath	0	0	0	0	0	0	0	0	2	0	2
Lake	0	0	0	0	0	0	0	0	0	0	0
Lane	0	0	0	0	0	0	0	2	4	7	13
Lincoln	0	0	0	0	0	0	0	0	1	0	1
Linn	0	0	0	0	0	0	0	0	1	2	3
Malheur	0	0	0	0	0	0	0	2	0	0	2
Marion	0	0	0	0	0	0	0	4	1	1	6
Morrow	0	0	0	0	0	0	0	0	0	0	0
Multnomah	0	1	0	0	0	0	0	4	2	5	12
Polk	0	0	0	0	0	0	0	0	0	0	0
Sherman	0	0	0	0	0	0	0	0	0	0	0
Tillamook	0	0	0	0	0	0	0	0	0	0	0
Umatilla	0	0	0	0	0	0	0	0	1	0	1
Union	0	0	0	0	0	0	0	0	0	1	1
Wallowa	0	0	0	0	0	0	0	0	0	0	0
Wasco	0	0	0	0	0	0	0	0	0	0	0
Washington	0	0	0	0	0	0	0	8	3	1	12
Wheeler	0	0	0	0	0	0	0	0	0	0	0
Yamhill	0	0	0	0	0	0	0	2	2	0	4
Total	0	1	0	0	0	0	0	36	26	25	88

	Sex			Total
	F	M	U	
2007	0	0	0	0
2008	1	0	0	1
2009	0	0	0	0
2010	0	0	0	0
2011	0	0	0	0
2012	0	0	0	0
2013	0	0	0	0
2014	18	18	0	36
2015	13	13	0	26
2016	13	12	0	25
Total	45	43	0	88

	Race					Total
	A	B	N	W	U	
2007	0	0	0	0	0	0
2008	0	0	0	1	0	1
2009	0	0	0	0	0	0
2010	0	0	0	0	0	0
2011	0	0	0	0	0	0
2012	0	0	0	0	0	0
2013	0	0	0	0	0	0
2014	0	0	0	26	10	36
2015	2	0	0	21	3	26
2016	3	0	0	19	3	25
Total	5	0	0	67	16	88

dis_2	Non Mycobacterium TB Notes
ACD241	NTM became Reportable in 2014.

Oregon Pertussis Cases
January - June

	Age Group in Years												Total
	00-04	05-09	10-14	15-19	20-24	25-29	30-39	40-49	50-59	60-69	70-79	80+	
2005	102	59	127	60	19	7	30	35	11	6	1	2	459
2006	23	3	5	13	6	3	5	11	2	0	2	0	73
2007	19	8	7	4	2	6	5	0	2	1	0	0	54
2008	33	19	16	3	2	2	4	2	1	1	0	0	83
2009	40	17	20	12	3	4	5	4	2	2	3	0	112
2010	43	32	29	13	1	3	6	7	6	3	0	0	143
2011	49	38	30	6	0	2	3	5	5	2	2	0	142
2012	154	92	199	47	8	8	19	25	7	5	4	0	568
2013	62	42	72	30	3	1	4	15	3	4	0	1	237
2014	106	64	106	84	12	4	20	12	18	14	0	2	442
2015	74	66	90	103	6	5	6	13	7	3	3	3	379
2016	26	22	24	15	1	0	6	5	0	0	2	1	102
Total	731	462	725	390	63	45	113	134	64	41	17	9	2794

	2005	2006	2007	2008	2009	2010	2011	2012	2013	2014	2015	2016	Total
Baker	0	0	0	0	0	0	0	0	0	0	0	0	0
Benton	45	0	0	0	10	1	2	9	3	14	33	11	128
Clackamas	23	1	0	0	14	2	19	55	16	54	32	20	236
Clatsop	3	0	0	9	1	0	8	17	2	0	3	1	44
Columbia	0	0	0	1	0	2	2	5	0	0	0	1	11
Coos	0	2	0	0	8	1	0	0	19	0	4	0	34
Crook	1	1	0	0	0	0	0	0	0	0	2	0	4
Curry	10	0	0	0	0	2	0	0	0	0	0	0	12
Deschutes	17	0	0	0	1	4	0	2	0	94	34	3	155
Douglas	0	0	0	0	17	1	1	0	2	2	2	0	25
Gilliam	0	5	0	0	0	0	0	0	0	0	0	0	5
Grant	0	0	0	0	0	0	0	0	0	0	4	0	4
Harney	0	0	8	0	0	0	0	1	0	0	0	0	9
Hood River	4	0	0	0	1	0	0	4	0	2	0	2	13
Jackson	14	8	0	8	4	28	2	3	10	24	28	2	131
Jefferson	0	0	0	0	0	0	0	0	1	6	1	1	9
Josephine	7	0	0	1	2	7	3	0	29	8	2	1	60
Klamath	3	9	0	2	0	0	1	0	19	0	4	0	38
Lake	0	0	0	0	0	0	0	0	0	2	0	0	2
Lane	96	11	1	10	4	27	34	12	43	54	26	10	328
Lincoln	26	0	4	0	0	7	0	6	0	0	3	0	46
Linn	18	0	13	1	11	1	0	7	7	18	2	2	80
Malheur	0	0	0	0	0	0	0	9	0	2	1	0	12
Marion	89	5	0	17	10	11	11	25	39	18	42	17	284
Morrow	0	4	0	0	0	0	0	0	0	0	0	0	4
Multnomah	58	12	12	20	15	33	50	164	31	48	35	13	491
Polk	14	0	1	2	0	3	4	14	5	20	7	4	74
Sherman	0	0	0	0	0	0	0	0	0	0	0	0	0
Tillamook	0	0	0	0	0	2	0	0	0	2	0	0	4
Umatilla	1	1	0	0	1	0	0	4	0	0	6	0	13
Union	1	0	0	0	4	0	0	1	1	0	6	0	13
Wallowa	1	0	0	0	0	0	0	0	0	0	0	0	1
Wasco	3	1	0	0	0	0	1	1	0	0	16	2	24
Washington	29	15	12	10	7	8	4	211	9	42	60	11	418
Wheeler	0	0	0	0	0	0	0	0	0	0	0	0	0
Yamhill	7	0	3	2	2	3	0	18	1	32	26	1	95
Total	470	75	54	83	112	143	142	568	237	442	379	102	2807

	Sex			Total
	F	M	U	
2005	242	225	3	470
2006	41	32	2	75
2007	32	21	1	54
2008	39	44	0	83
2009	62	48	2	112
2010	75	68	0	143
2011	69	73	0	142
2012	293	275	0	568
2013	135	102	0	237
2014	240	202	0	442
2015	196	183	0	379
2016	58	44	0	102
Total	1482	1317	8	2807

	Race					Total
	A	B	N	W	U	
2005	17	2	5	379	67	470
2006	4	0	3	59	9	75
2007	1	0	1	44	8	54
2008	0	0	0	75	8	83
2009	0	1	1	93	17	112
2010	2	1	0	126	14	143
2011	0	0	1	127	14	142
2012	12	11	3	494	48	568
2013	2	1	5	201	28	237
2014	4	2	0	394	42	442
2015	2	5	4	319	49	379
2016	2	0	1	84	15	102
Total	46	23	24	2395	319	2807

Oregon Salmonella Cases
January - June

	Age Group in Years												Total
	00-04	05-09	10-14	15-19	20-24	25-29	30-39	40-49	50-59	60-69	70-79	80+	
2005	35	13	9	8	10	12	34	22	15	11	7	12	188
2006	32	9	13	9	19	18	23	23	22	16	8	4	196
2007	29	11	5	7	12	6	18	20	16	12	12	5	153
2008	38	12	7	12	13	12	22	22	17	20	9	6	190
2009	41	14	14	12	15	17	26	26	19	11	11	5	211
2010	43	16	18	12	21	21	34	36	43	20	15	8	287
2011	41	3	7	9	12	11	23	17	17	11	9	7	167
2012	29	6	5	6	14	12	27	21	18	18	8	8	172
2013	21	8	6	17	9	13	17	14	16	17	10	4	152
2014	54	26	4	26	12	18	32	30	47	38	10	12	309
2015	22	12	6	14	17	14	43	29	30	19	13	8	227
2016	19	3	9	9	11	21	26	28	20	27	13	7	193
Total	404	133	103	141	165	175	325	288	280	220	125	86	2445

	2005	2006	2007	2008	2009	2010	2011	2012	2013	2014	2015	2016	Total
Baker	0	1	1	0	1	0	1	1	1	0	2	2	10
Benton	6	4	8	6	5	4	3	2	3	2	3	2	48
Clackamas	21	10	13	16	17	17	25	21	13	40	22	19	234
Clatsop	2	3	1	0	0	3	0	3	3	10	4	2	31
Columbia	1	2	0	0	0	0	1	0	1	6	3	2	16
Coos	4	2	5	6	3	4	1	2	3	4	6	2	42
Crook	2	2	1	1	0	0	2	1	4	0	0	0	13
Curry	0	1	0	0	3	2	0	0	1	0	0	0	7
Deschutes	8	9	7	6	6	12	8	6	11	10	10	11	104
Douglas	5	4	7	8	5	81	3	6	3	2	7	5	136
Gilliam	0	0	0	0	0	0	0	0	0	0	0	0	0
Grant	0	0	0	0	0	0	0	0	0	0	0	0	0
Harney	1	0	0	1	0	0	0	1	0	0	0	1	4
Hood River	0	0	1	0	1	3	2	1	2	2	0	2	14
Jackson	13	5	19	13	17	13	5	5	4	8	4	12	118
Jefferson	0	1	0	0	0	2	5	0	2	2	0	1	13
Josephine	4	3	0	4	4	7	1	1	2	8	3	4	41
Klamath	1	3	3	3	4	5	5	5	2	2	1	4	38
Lake	0	0	0	1	1	1	0	0	0	0	0	0	3
Lane	18	14	9	12	14	20	15	23	15	17	17	12	186
Lincoln	4	2	0	1	2	2	1	1	2	4	1	1	21
Linn	5	12	7	11	8	6	7	8	4	10	9	3	90
Malheur	0	1	4	4	0	2	0	3	3	0	4	1	22
Marion	14	23	12	14	23	23	17	14	6	32	24	11	213
Morrow	2	0	0	1	0	0	1	1	0	2	1	0	8
Multnomah	34	39	29	31	51	47	34	28	32	70	50	42	487
Polk	4	3	0	5	3	1	3	5	4	2	4	4	38
Sherman	0	0	0	0	0	0	0	0	0	0	0	0	0
Tillamook	0	1	0	0	0	3	0	0	1	0	2	0	7
Umatilla	6	5	3	6	5	1	3	3	4	6	7	1	50
Union	1	2	0	2	1	1	2	1	0	0	2	0	12
Wallowa	0	0	0	0	0	0	1	0	0	2	1	0	4
Wasco	3	5	3	1	1	3	1	2	1	0	1	1	22
Washington	24	27	19	32	30	21	17	22	17	44	35	40	328
Wheeler	0	0	0	0	0	0	0	0	0	0	0	0	0
Yamhill	5	12	1	5	6	3	4	6	8	24	4	8	86
Total	188	196	153	190	211	287	168	172	152	309	227	193	2446

	Sex			Total
	F	M	U	
2005	105	81	2	188
2006	114	82	0	196
2007	73	79	1	153
2008	98	92	0	190
2009	103	108	0	211
2010	155	132	0	287
2011	92	76	0	168
2012	93	79	0	172
2013	89	63	0	152
2014	187	122	0	309
2015	116	111	0	227
2016	106	87	0	193
Total	1331	1112	3	2446

	Race					Total
	A	B	N	W	U	
2005	9	2	4	152	21	188
2006	9	2	1	154	30	196
2007	1	3	1	134	14	153
2008	1	3	2	160	24	190
2009	15	5	4	162	25	211
2010	9	6	4	243	25	287
2011	5	2	1	147	13	168
2012	3	1	1	154	13	172
2013	3	4	0	135	10	152
2014	8	10	0	243	48	309
2015	5	6	1	187	28	227
2016	10	0	4	156	23	193
Total	78	44	23	2027	274	2446

Oregon Shigella Cases
January - June

	Age Group in Years												Total
	00-04	05-09	10-14	15-19	20-24	25-29	30-39	40-49	50-59	60-69	70-79	80+	
2005	9	4	0	2	3	2	4	6	9	0	1	0	40
2006	5	5	2	3	3	3	7	12	12	8	5	2	67
2007	6	2	1	2	0	2	6	6	6	0	2	0	33
2008	4	3	2	1	2	2	5	1	1	1	1	0	23
2009	6	6	0	1	1	3	5	1	2	0	0	0	25
2010	2	7	0	0	0	3	4	4	3	2	0	0	25
2011	7	1	0	3	2	4	2	3	2	1	0	1	26
2012	3	3	1	3	1	2	7	4	2	4	1	1	32
2013	1	5	1	0	0	3	3	4	4	2	0	0	23
2014	0	6	2	6	0	2	10	4	4	2	0	2	38
2015	0	3	1	0	0	2	2	4	2	2	0	1	17
2016	1	1	2	0	5	8	17	16	15	5	5	3	78
Total	44	46	12	21	17	36	72	65	62	27	15	10	427

	2005	2006	2007	2008	2009	2010	2011	2012	2013	2014	2015	2016	Total
Baker	0	0	0	0	0	0	0	0	0	0	0	0	0
Benton	1	2	0	1	1	0	1	0	0	2	0	0	8
Clackamas	0	0	2	0	2	0	3	1	2	0	2	3	15
Clatsop	1	0	0	0	0	0	0	0	0	0	0	0	1
Columbia	0	0	0	0	0	0	0	0	0	0	1	1	2
Coos	0	0	0	0	0	0	0	0	0	0	0	0	0
Crook	0	0	0	0	0	0	0	0	0	0	0	0	0
Curry	0	0	0	0	0	0	0	0	0	0	0	0	0
Deschutes	0	0	1	1	4	1	0	0	0	0	1	4	12
Douglas	0	0	0	0	0	0	0	0	0	0	0	0	0
Gilliam	0	0	0	0	0	0	0	0	0	0	0	0	0
Grant	0	0	0	0	0	0	0	0	0	0	0	0	0
Harney	0	0	0	0	0	0	1	0	0	0	0	0	1
Hood River	0	2	1	1	0	1	0	0	0	0	0	0	5
Jackson	2	0	3	0	1	0	0	1	0	0	0	1	8
Jefferson	0	0	0	0	0	2	0	0	0	0	0	0	2
Josephine	0	2	0	0	0	0	0	0	0	0	0	0	2
Klamath	1	1	0	0	0	0	0	0	0	2	0	1	5
Lake	0	0	0	0	0	0	0	0	0	0	0	0	0
Lane	1	0	2	0	2	5	7	3	1	4	0	4	29
Lincoln	0	0	0	0	0	1	1	0	0	2	1	0	5
Linn	3	1	1	0	1	0	1	0	0	0	0	0	7
Malheur	0	1	0	0	0	0	0	0	0	0	0	0	1
Marion	12	9	1	5	8	8	0	5	5	0	1	2	56
Morrow	0	0	1	0	0	0	0	0	0	0	0	0	1
Multnomah	8	10	15	7	4	3	8	16	13	22	6	51	163
Polk	1	0	0	1	0	0	0	0	0	0	0	0	2
Sherman	0	0	0	0	0	0	0	0	0	0	0	0	0
Tillamook	0	0	0	0	0	0	0	0	0	0	0	0	0
Umatilla	1	0	0	3	0	0	0	0	0	0	0	0	4
Union	1	0	0	0	0	0	1	2	0	0	0	0	4
Wallowa	0	0	0	0	0	0	0	0	0	0	0	0	0
Wasco	1	2	0	0	0	0	0	0	0	0	0	0	3
Washington	7	5	6	5	2	4	3	4	2	2	4	10	54
Wheeler	0	0	0	0	0	0	0	0	0	0	0	0	0
Yamhill	0	34	0	0	0	1	0	0	0	4	1	1	41
Total	40	69	33	24	25	26	26	32	23	38	17	78	431

	Sex			Total
	F	M	U	
2005	22	18	0	40
2006	37	32	0	69
2007	15	18	0	33
2008	12	12	0	24
2009	11	14	0	25
2010	10	16	0	26
2011	18	8	0	26
2012	10	22	0	32
2013	8	15	0	23
2014	22	16	0	38
2015	6	11	0	17
2016	26	52	0	78
Total	197	234	0	431

	Race					Total
	A	B	N	W	U	
2005	0	0	0	32	8	40
2006	1	0	0	60	8	69
2007	3	2	0	24	4	33
2008	0	1	0	22	1	24
2009	4	0	0	18	3	25
2010	1	2	1	20	2	26
2011	2	1	1	19	3	26
2012	0	2	0	22	8	32
2013	0	1	0	19	3	23
2014	2	0	0	28	8	38
2015	1	0	0	13	3	17
2016	1	2	1	56	18	78
Total	15	11	3	333	69	431

Oregon Vibrio infections Cases
January - June

	Age Group in Years												Total
	00-04	05-09	10-14	15-19	20-24	25-29	30-39	40-49	50-59	60-69	70-79	80+	
2005	0	0	0	0	0	0	1	0	0	0	0	0	1
2006	0	0	0	0	0	0	1	0	0	0	0	0	1
2007	0	0	0	0	0	1	0	0	0	0	0	0	1
2008	0	0	0	0	0	0	0	0	0	0	0	0	0
2009	0	0	0	1	0	0	0	0	0	0	0	0	1
2010	0	0	0	0	0	0	0	0	0	0	0	0	0
2011	0	0	0	0	0	0	0	0	0	0	0	0	0
2012	0	0	0	0	0	0	2	0	0	0	0	0	2
2013	0	0	0	0	0	1	0	0	1	0	0	0	2
2014	0	0	0	0	0	0	2	4	2	0	2	2	12
2015	0	0	0	0	0	1	3	2	0	0	1	0	7
2016	0	0	0	0	2	0	1	2	1	0	0	0	6
Total	0	0	0	1	2	3	10	8	4	0	3	2	33

	Sex			Total
	F	M	U	
2005	1	0	0	1
2006	0	1	0	1
2007	0	1	0	1
2008	0	0	0	0
2009	0	1	0	1
2010	0	0	0	0
2011	0	0	0	0
2012	0	2	0	2
2013	1	1	0	2
2014	2	10	0	12
2015	2	5	0	7
2016	2	4	0	6
Total	8	25	0	33

	Race					Total
	A	B	N	W	U	
2005	0	0	0	1	0	1
2006	0	0	0	1	0	1
2007	0	0	0	1	0	1
2008	0	0	0	0	0	0
2009	0	0	0	0	1	1
2010	0	0	0	0	0	0
2011	0	0	0	0	0	0
2012	0	0	0	2	0	2
2013	0	0	0	2	0	2
2014	0	0	0	10	2	12
2015	0	0	0	6	1	7
2016	0	0	0	4	2	6
Total	0	0	0	27	6	33

	2005	2006	2007	2008	2009	2010	2011	2012	2013	2014	2015	2016	Total
Baker	0	0	0	0	0	0	0	0	0	0	0	0	0
Benton	0	0	0	0	0	0	0	0	0	0	0	0	0
Clackamas	0	1	0	0	0	0	0	0	0	0	0	0	1
Clatsop	0	0	0	0	0	0	0	0	0	2	0	0	2
Columbia	0	0	0	0	0	0	0	0	0	0	0	1	1
Coos	0	0	0	0	0	0	0	0	0	0	0	0	0
Crook	0	0	0	0	0	0	0	0	0	0	0	0	0
Curry	0	0	0	0	0	0	0	0	0	2	0	0	2
Deschutes	0	0	0	0	0	0	0	0	0	0	1	1	2
Douglas	0	0	0	0	0	0	0	0	0	0	0	0	0
Gilliam	0	0	0	0	0	0	0	0	0	0	0	0	0
Grant	0	0	0	0	0	0	0	0	0	0	0	0	0
Harney	0	0	0	0	0	0	0	0	0	0	0	0	0
Hood River	0	0	0	0	0	0	0	0	0	0	0	0	0
Jackson	0	0	0	0	0	0	0	0	0	2	0	0	2
Jefferson	0	0	0	0	0	0	0	0	0	0	0	1	1
Josephine	0	0	0	0	0	0	0	0	0	0	0	0	0
Klamath	0	0	0	0	0	0	0	0	0	0	0	0	0
Lake	0	0	0	0	0	0	0	0	0	0	0	0	0
Lane	0	0	0	0	0	0	0	0	1	0	1	0	2
Lincoln	0	0	0	0	0	0	0	0	0	0	0	0	0
Linn	0	0	0	0	0	0	0	0	0	0	0	0	0
Malheur	0	0	0	0	0	0	0	0	0	0	0	0	0
Marion	0	0	0	0	1	0	0	0	0	2	0	0	3
Morrow	0	0	0	0	0	0	0	0	0	0	0	0	0
Multnomah	0	0	1	0	0	0	0	1	1	0	3	0	6
Polk	0	0	0	0	0	0	0	0	0	0	1	1	2
Sherman	0	0	0	0	0	0	0	0	0	0	0	0	0
Tillamook	0	0	0	0	0	0	0	0	0	0	0	0	0
Umatilla	0	0	0	0	0	0	0	0	0	0	0	0	0
Union	0	0	0	0	0	0	0	0	0	0	0	0	0
Wallowa	0	0	0	0	0	0	0	0	0	0	0	0	0
Wasco	0	0	0	0	0	0	0	0	0	0	0	0	0
Washington	1	0	0	0	0	0	0	1	0	4	1	2	9
Wheeler	0	0	0	0	0	0	0	0	0	0	0	0	0
Yamhill	0	0	0	0	0	0	0	0	0	0	0	0	0
Total	1	1	1	0	1	0	0	2	2	12	7	6	33

Oregon West Nile Cases
January - June

	Age Group in Years												Total
	00-04	05-09	10-14	15-19	20-24	25-29	30-39	40-49	50-59	60-69	70-79	80+	
2006	0	0	0	0	0	0	1	0	1	1	0	0	3
2007	0	0	0	0	1	0	0	0	0	0	0	0	1
2008	0	0	0	0	0	0	0	0	0	0	1	0	1
2009	0	0	0	0	0	0	0	0	0	0	0	0	0
2010	0	0	0	0	0	0	0	0	0	0	0	0	0
2011	0	0	0	0	0	0	0	0	0	0	0	0	0
2012	0	0	0	0	0	0	0	1	0	0	0	0	1
2013	0	0	0	0	0	0	0	0	0	0	0	0	0
2014	0	0	0	0	0	0	0	0	0	0	0	0	0
2015	0	0	0	0	0	0	0	0	0	0	0	0	0
2016	0	0	0	0	0	0	0	0	0	0	0	0	0
Total	0	0	0	0	1	0	1	1	1	1	1	0	6

	2006	2007	2008	2009	2010	2011	2012	2013	2014	2015	2016	Total
Baker	0	0	0	0	0	0	0	0	0	0	0	0
Benton	0	0	0	0	0	0	0	0	0	0	0	0
Clackamas	0	0	0	0	0	0	0	0	0	0	0	0
Clatsop	0	0	0	0	0	0	0	0	0	0	0	0
Columbia	0	0	0	0	0	0	0	0	0	0	0	0
Coos	0	0	0	0	0	0	0	0	0	0	0	0
Crook	0	0	0	0	0	0	0	0	0	0	0	0
Curry	0	0	0	0	0	0	0	0	0	0	0	0
Deschutes	0	0	0	0	0	0	0	0	0	0	0	0
Douglas	1	0	0	0	0	0	0	0	0	0	0	1
Gilliam	0	0	0	0	0	0	0	0	0	0	0	0
Grant	0	0	0	0	0	0	0	0	0	0	0	0
Harney	1	0	0	0	0	0	0	0	0	0	0	1
Hood River	0	0	0	0	0	0	0	0	0	0	0	0
Jackson	0	0	0	0	0	0	0	0	0	0	0	0
Jefferson	0	0	0	0	0	0	0	0	0	0	0	0
Josephine	0	0	0	0	0	0	0	0	0	0	0	0
Klamath	0	0	0	0	0	0	0	0	0	0	0	0
Lake	0	0	0	0	0	0	0	0	0	0	0	0
Lane	0	0	0	0	0	0	1	0	0	0	0	1
Lincoln	0	0	0	0	0	0	0	0	0	0	0	0
Linn	0	0	0	0	0	0	0	0	0	0	0	0
Malheur	1	1	1	0	0	0	0	0	0	0	0	3
Marion	0	0	0	0	0	0	0	0	0	0	0	0
Morrow	0	0	0	0	0	0	0	0	0	0	0	0
Multnomah	0	0	0	0	0	0	0	0	0	0	0	0
Polk	0	0	0	0	0	0	0	0	0	0	0	0
Sherman	0	0	0	0	0	0	0	0	0	0	0	0
Tillamook	0	0	0	0	0	0	0	0	0	0	0	0
Umatilla	0	0	0	0	0	0	0	0	0	0	0	0
Union	0	0	0	0	0	0	0	0	0	0	0	0
Wallowa	0	0	0	0	0	0	0	0	0	0	0	0
Wasco	0	0	0	0	0	0	0	0	0	0	0	0
Washington	0	0	0	0	0	0	0	0	0	0	0	0
Wheeler	0	0	0	0	0	0	0	0	0	0	0	0
Yamhill	0	0	0	0	0	0	0	0	0	0	0	0
Total	3	1	1	0	0	0	1	0	0	0	0	6

	Sex			Total
	F	M	U	
2006	1	2	0	3
2007	0	1	0	1
2008	1	0	0	1
2009	0	0	0	0
2010	0	0	0	0
2011	0	0	0	0
2012	0	1	0	1
2013	0	0	0	0
2014	0	0	0	0
2015	0	0	0	0
2016	0	0	0	0
Total	2	4	0	6

	Race					Total
	A	B	N	W	U	
2006	0	0	0	3	0	3
2007	0	0	0	1	0	1
2008	0	0	0	1	0	1
2009	0	0	0	0	0	0
2010	0	0	0	0	0	0
2011	0	0	0	0	0	0
2012	0	0	0	0	1	1
2013	0	0	0	0	0	0
2014	0	0	0	0	0	0
2015	0	0	0	0	0	0
2016	0	0	0	0	0	0
Total	0	0	0	5	1	6

Oregon Yersinia Cases
January - June

	Age Group in Years												Total
	00-04	05-09	10-14	15-19	20-24	25-29	30-39	40-49	50-59	60-69	70-79	80+	
2005	0	1	0	0	0	0	2	4	1	2	0	0	10
2006	2	3	0	0	0	2	0	1	0	3	0	0	11
2007	6	0	0	1	0	0	0	0	2	0	2	2	13
2008	3	0	1	1	0	0	1	2	0	1	0	0	9
2009	1	0	0	0	1	1	1	1	1	1	0	0	7
2010	2	3	0	0	0	0	1	1	1	3	1	0	12
2011	2	0	0	1	0	1	0	1	2	3	1	0	11
2012	4	0	1	0	2	0	1	0	3	1	2	0	14
2013	0	4	0	2	3	2	1	3	0	2	0	0	17
2014	4	2	0	2	2	2	0	2	2	4	2	2	24
2015	1	1	0	0	0	0	0	1	0	1	0	1	5
2016	0	1	0	1	1	2	1	1	1	1	2	0	11
Total	25	15	2	8	9	10	8	17	13	22	10	5	144

	Sex			Total
	F	M	U	
2005	6	4	0	10
2006	4	7	0	11
2007	3	10	0	13
2008	3	6	0	9
2009	3	4	0	7
2010	6	6	0	12
2011	4	7	0	11
2012	4	10	0	14
2013	11	6	0	17
2014	12	12	0	24
2015	1	4	0	5
2016	6	5	0	11
Total	63	81	0	144

	Race					Total
	A	B	N	W	U	
2005	2	0	0	8	0	10
2006	0	0	0	11	0	11
2007	1	0	0	10	2	13
2008	2	0	0	6	1	9
2009	0	0	0	6	1	7
2010	1	0	0	9	2	12
2011	0	0	0	11	0	11
2012	0	0	0	11	3	14
2013	2	0	0	14	1	17
2014	4	0	0	18	2	24
2015	0	0	0	4	1	5
2016	0	1	0	9	1	11
Total	12	1	0	117	14	144

	2005	2006	2007	2008	2009	2010	2011	2012	2013	2014	2015	2016	Total
Baker	0	0	0	0	0	0	0	0	0	0	0	0	0
Benton	0	0	0	0	0	0	0	0	0	0	0	0	0
Clackamas	0	1	4	5	0	3	1	2	1	4	0	2	23
Clatsop	0	0	0	0	0	1	0	0	0	0	0	0	1
Columbia	0	0	0	0	0	0	0	0	0	0	0	0	0
Coos	0	0	1	0	0	0	0	1	0	0	0	0	2
Crook	0	0	0	0	0	1	0	0	0	0	0	0	1
Curry	0	0	0	1	1	0	0	0	1	0	0	0	3
Deschutes	0	2	0	0	1	0	0	0	0	0	0	1	4
Douglas	0	0	0	0	0	0	0	0	0	0	0	0	0
Gilliam	0	0	0	0	0	0	0	0	0	0	0	0	0
Grant	0	0	0	0	0	0	0	0	0	0	0	0	0
Harney	0	0	0	0	0	0	0	0	0	0	0	0	0
Hood River	0	0	0	0	0	0	0	0	0	0	0	0	0
Jackson	0	0	0	0	0	1	0	2	1	0	1	0	5
Jefferson	0	0	0	0	0	0	0	0	0	0	0	0	0
Josephine	0	0	0	0	0	0	0	1	0	0	0	0	1
Klamath	0	1	0	0	0	0	0	0	0	0	0	0	1
Lake	0	0	0	0	0	0	0	0	0	0	0	0	0
Lane	1	1	4	0	2	0	1	0	4	6	0	1	20
Lincoln	0	0	0	0	0	0	0	0	0	0	0	0	0
Linn	0	1	0	0	0	0	1	0	1	0	0	0	3
Malheur	0	0	0	0	0	0	0	0	0	0	0	0	0
Marion	0	1	0	0	0	0	1	2	1	0	0	0	5
Morrow	0	0	0	0	0	0	0	0	0	0	0	1	1
Multnomah	5	2	2	2	1	1	2	3	5	12	3	4	42
Polk	0	0	0	0	0	0	0	0	0	0	0	0	0
Sherman	1	0	0	0	0	0	0	0	0	0	0	0	1
Tillamook	0	0	0	0	0	0	0	0	0	0	0	0	0
Umatilla	1	1	1	0	1	1	4	0	0	2	1	0	12
Union	0	1	0	0	0	0	0	0	0	0	0	0	1
Wallowa	0	0	0	0	0	0	0	0	0	0	0	0	0
Wasco	0	0	0	0	0	0	0	0	0	0	0	0	0
Washington	1	0	1	1	1	3	1	3	3	0	0	2	16
Wheeler	0	0	0	0	0	0	0	0	0	0	0	0	0
Yamhill	1	0	0	0	0	1	0	0	0	0	0	0	2
Total	10	11	13	9	7	12	11	14	17	24	5	11	144